

METRIC PROFILE



FEATURES

FIRE RATED / INSULATED / TOTAL SYSTEM WARRANTY

UTILISATION

WALLS / CEILINGS / ROOF

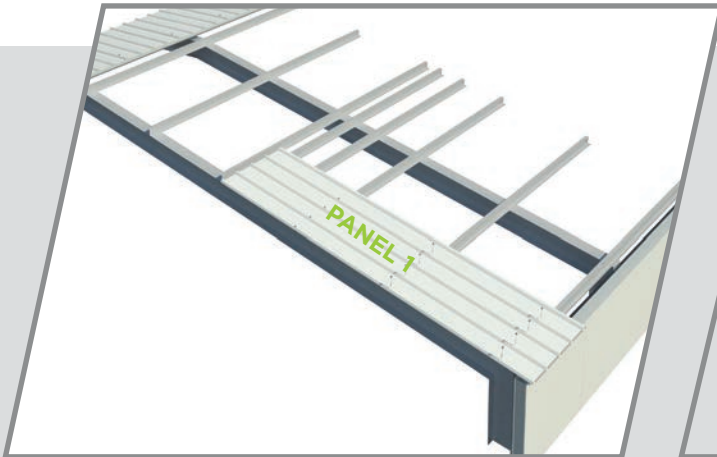
APPLICATION

COMMERCIAL / INDUSTRIAL / ARCHITECTURAL / RESIDENTIAL

ROOFING INSTALLATION GUIDE

SEQUENCE

The maximum length of each roofing panel is 25m. If the length of the roof is more than 25m, two or more panels will be required.



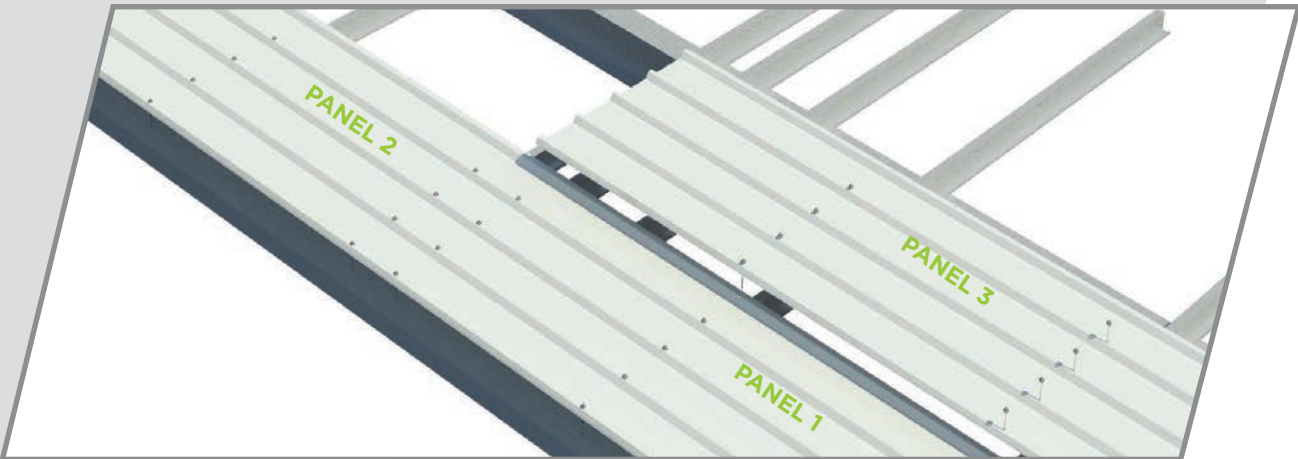
STEP 1.

Fasten 'Panel 1' to each steel purlin with 4 tek screws through the 4 ribs as shown. Do not fasten through the 5th rib or through the top edge of the panel



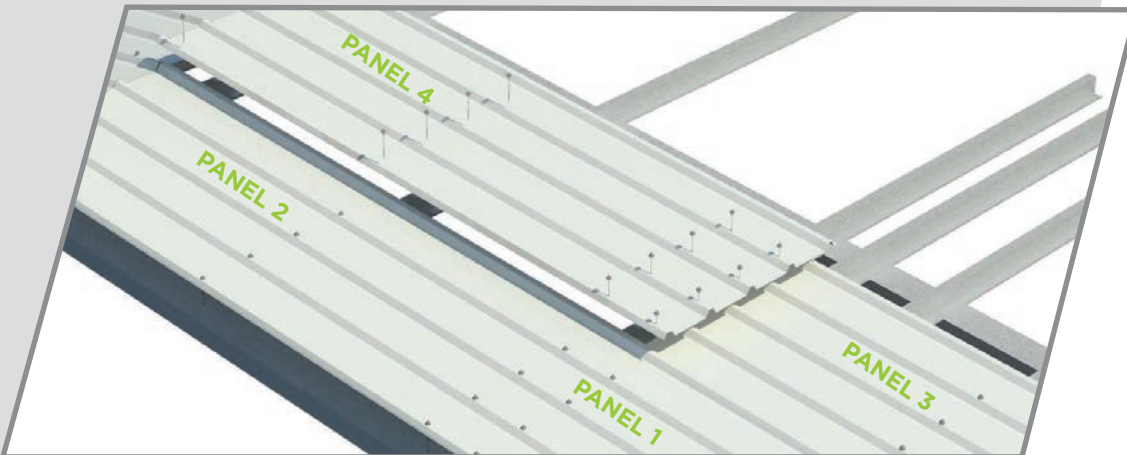
STEP 2.

Fasten overlapping 'Panel 2' to the purlins below with 4 tek screws through the ribs as shown. Do not fasten through the 5th rib. Use a single tek screw to fasten the top edge of panel in location as shown.



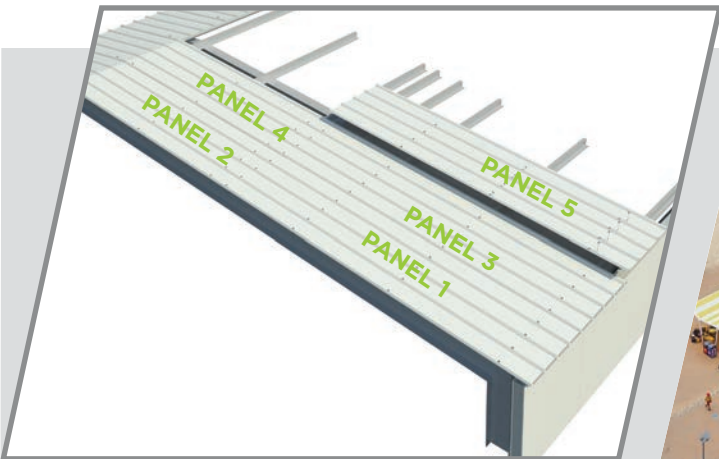
STEP 3.

Fasten overlapping 'Panel 3' to each steel purlin with 4 tek screws through the 4 ribs as shown. Do not fasten through the 5th rib or through the top edge of the panel.



STEP 4.

Fasten overlapping 'Panel 4' to the purlins below with 4 tek screws through the ribs as shown. Do not fasten through the 5th rib or through the top edge of the panel. Use a single tek screw to fasten the top edge of panel in location as shown.



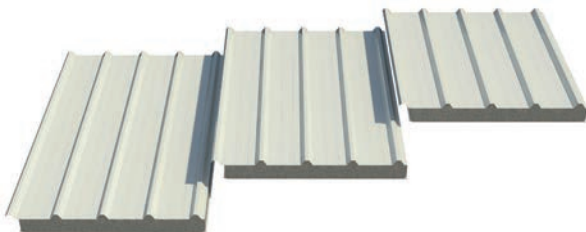
STEP 5.

Repeat steps 3 and 4 for the rest of the roof.

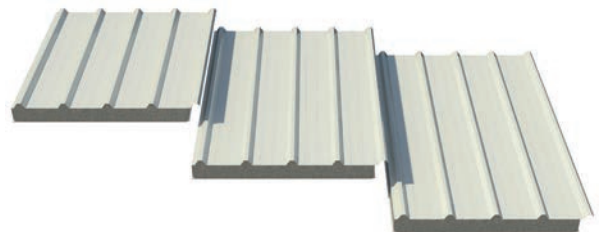


LAY AND CUT BACK

ASKIN Performance Panels - Metric Profile



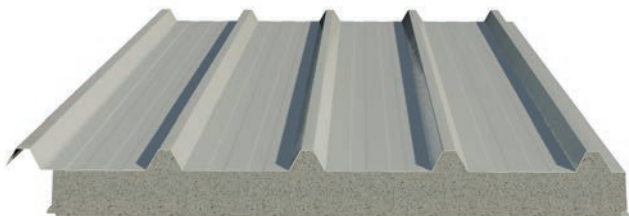
LEFT HAND CUT BACK - Lay panels left to right



RIGHT HAND CUT BACK - Lay panels right to left

COMPONENTS

ASKIN Performance Panels - Metric Profile



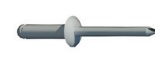
Main Fastener - 25mm Tek Screw assembly with multi-seal washer



Stitching Screw



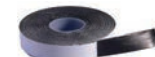
Rivets



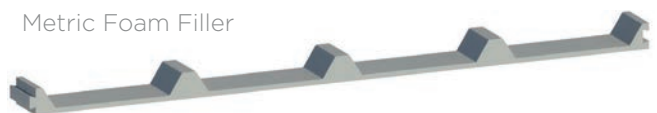
Sealant



Butyl Rubber Tape Sealant



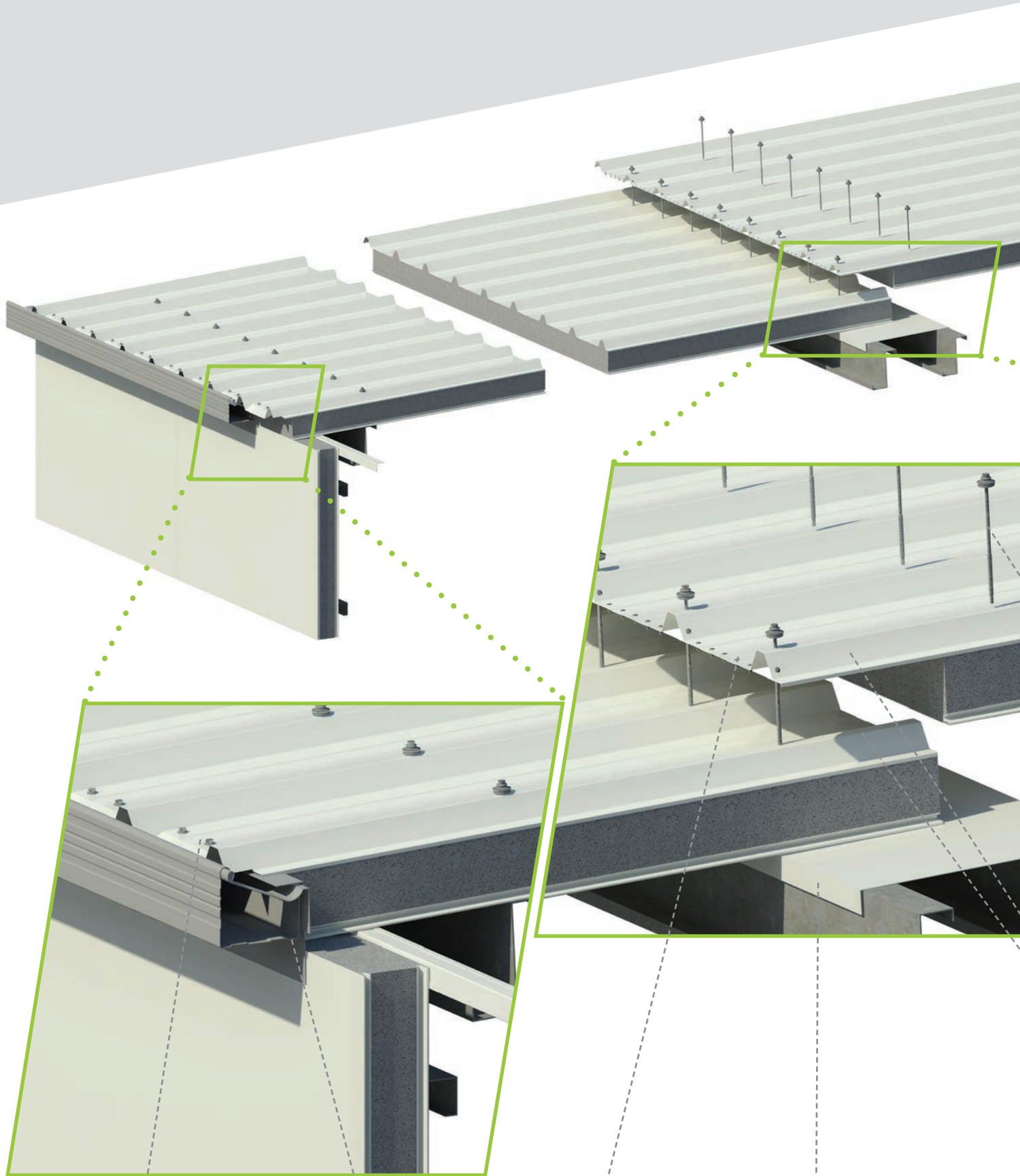
Metric Foam Filler



Please note that the Metric Installation Brochure should be read in conjunction with standard details and specific project related drawings. ASKIN reserve the right to update and amend the information contained in this document at any time.

ROOFING INSTALLATION GUIDE

LAPS, RIDGE & GUTTERS

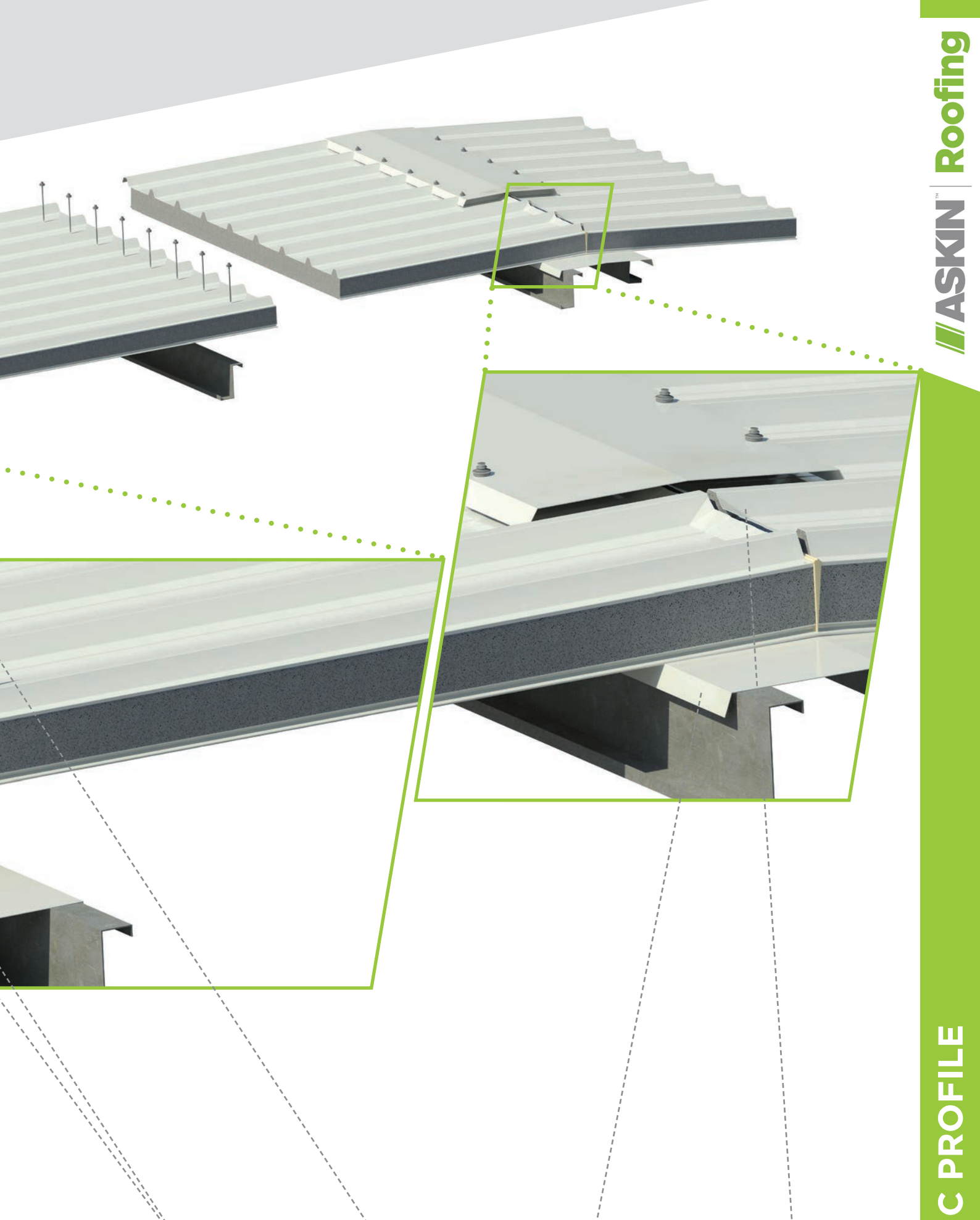


DOWNTURN & FIXINGS
75mm standard cut back of panel core. Turn down skin between ribs.
Tek screws with neoprene washer (or rivets) at 150 ctrs.

GUTTER, BRACKET & FLASHING
Gutter and gutter bracket by others.
1.2mm steel gutter support flashing.

FIXINGS
6 Gauge sealed rivets joining overlap and panel under.

FLASHING
0.6mm minimum thickness pre-painted steel flashing. Colour to match internal skin.



OVERLAP & WEATHER SEAL

200mm standard roofing overlap. 2 Rows polyurethane sealant in front and behind tek screw.

FIXINGS

25mm Tek Screw assembly with multi-seal washer fixed through to purlins.

FLASHING & FOAM FILL

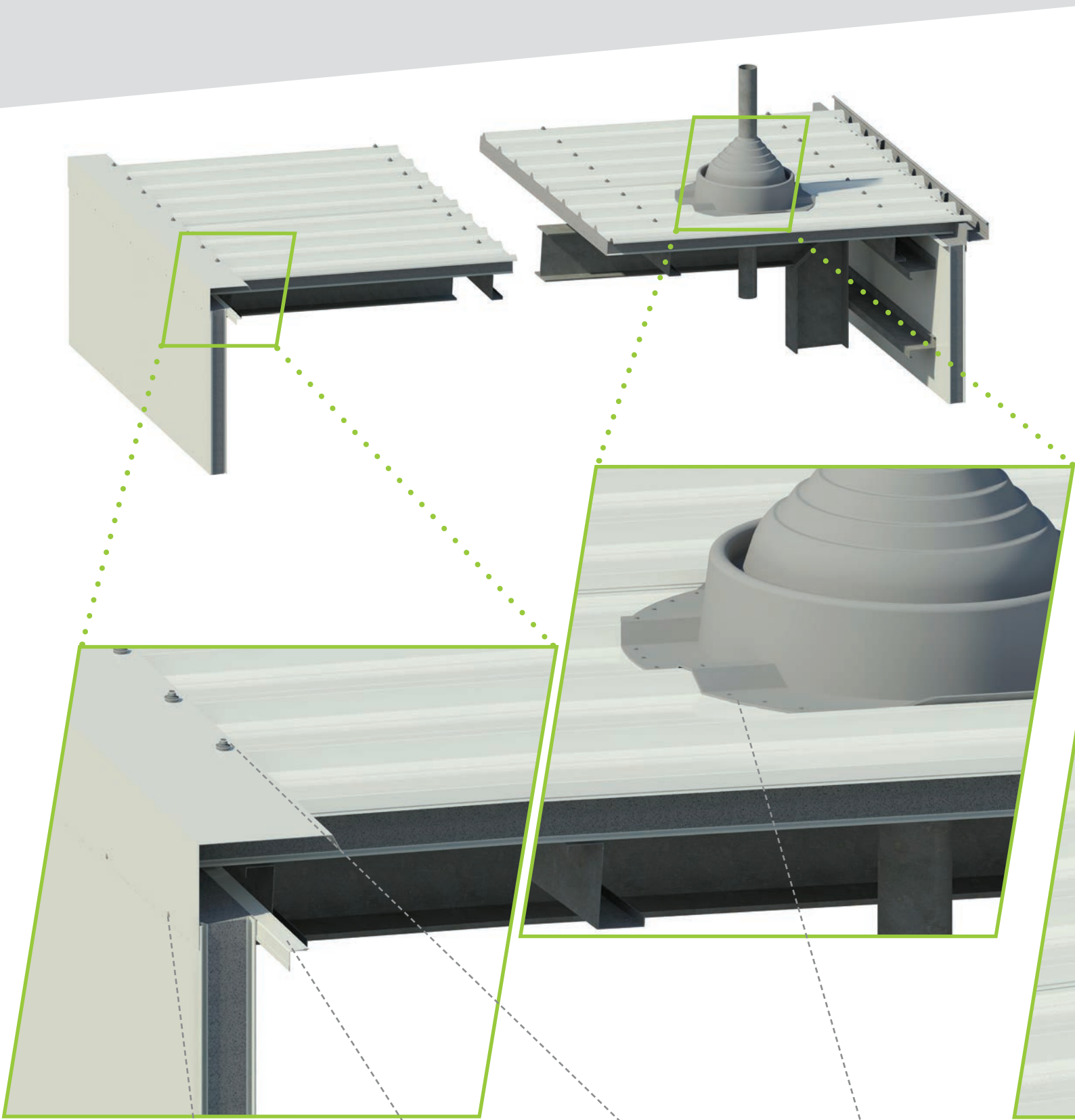
0.6mm thickness pre-painted steel flashing. Colour to match internal skin. Fill the gap between the panel cores with foam filler.

RIDGE

Turn up panel skin at ridge between ribs. 0.6mm pre-painted steel ridge cap cut to match the profile of the roofing panel.

ROOFING INSTALLATION GUIDE

SOAKER FLASHINGS



5.

FLASHING & FIXINGS

0.6mm pre-painted steel flashing. Colour to match panel skin. Fix with 12 x 25 tek screws with neoprene washers or rivets at 600 ctrs.

FLASHING & FIXINGS

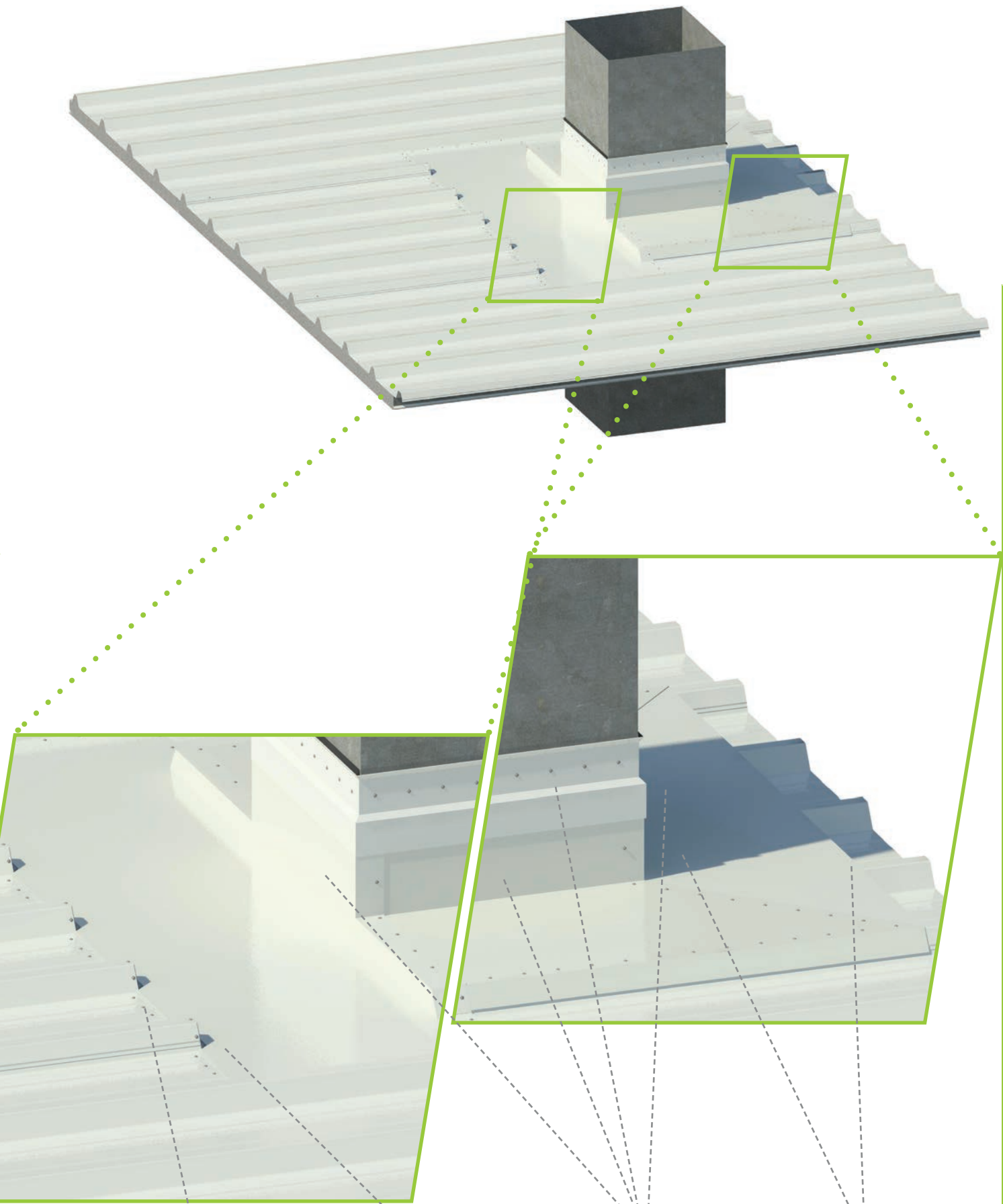
0.6mm pre-painted steel angle fixed with 16 x 22 wafer head SD 10 C3 screws or PC SS 4mm rivets at 300 ctrs.

FIXING

25mm Tek Screw assembly with multi-seal washer fixed through to purlins.

DEKTITE & FIXINGS

Weatherseal polyurethane sealant under. Fixings by others. Turn up panel skin under dektite between ribs on low side.



FIXINGS & SEALANTS
Cap ends of ribs with 0.6mm folded pre-painted steel. 6 gauge sealed rivets and polyurethane sealant.

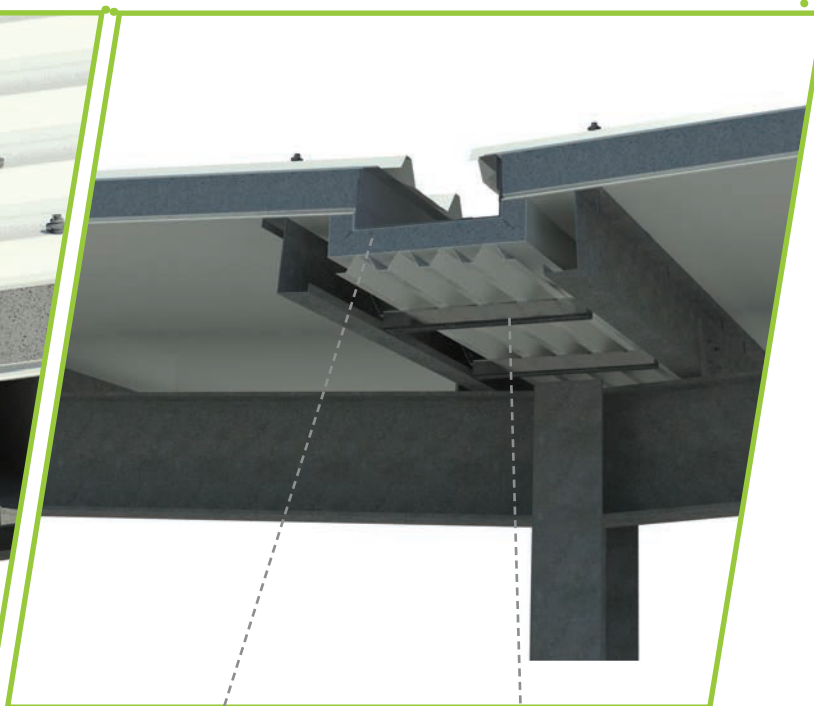
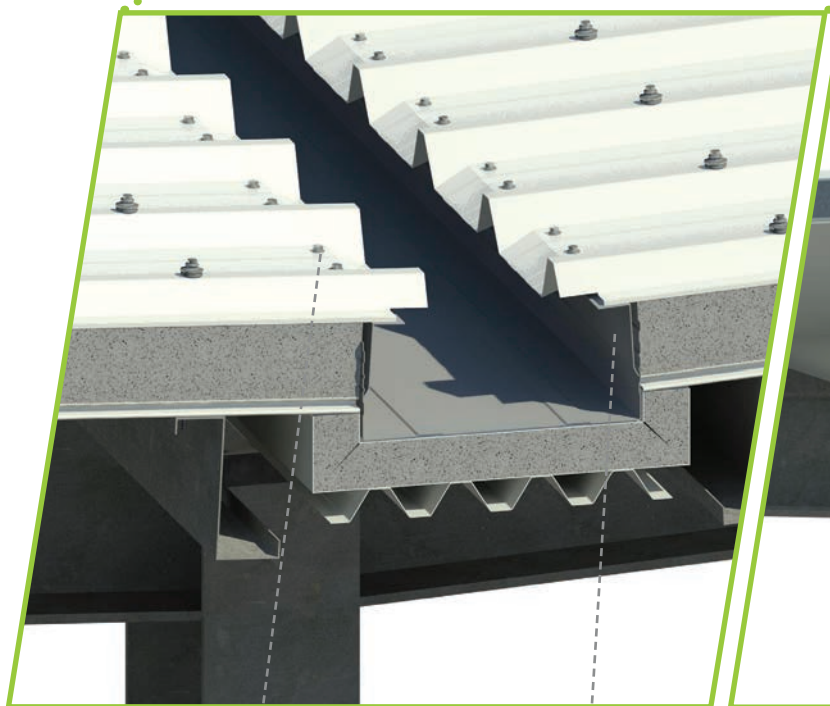
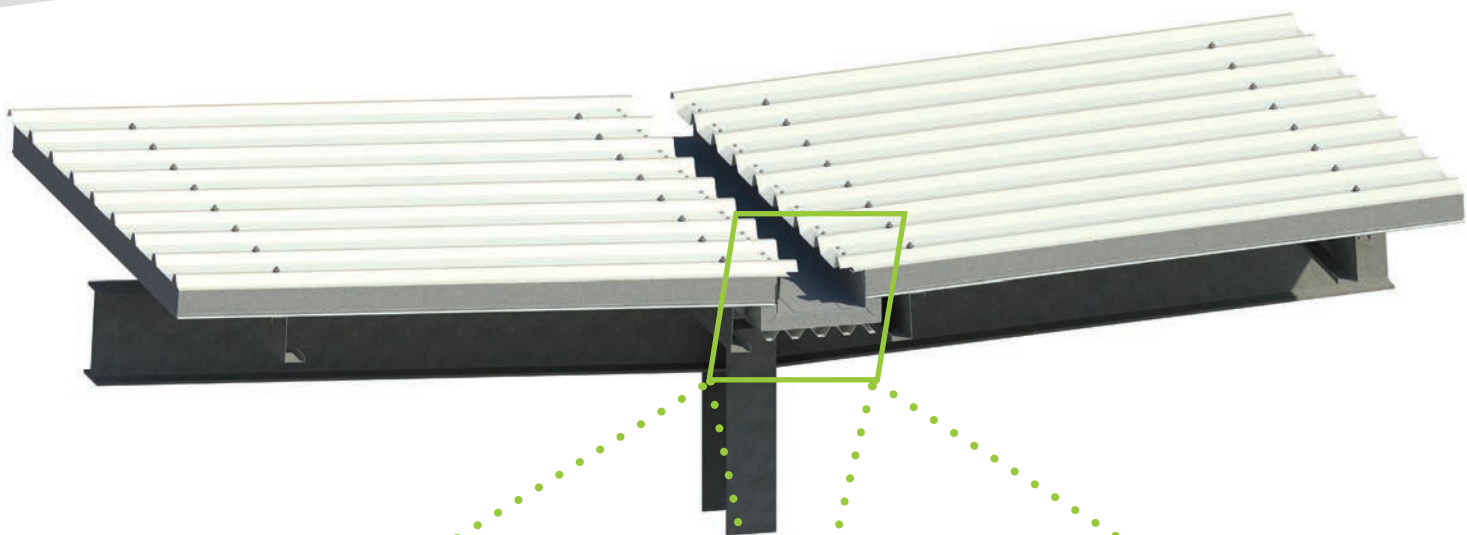
FLASHINGS
0.6mm pre-painted steel flashing to extend under panel skin.

FLASHINGS & FIXINGS
0.6mm pre-painted steel flashing. Colour to match external skin. 6 Gauge sealed rivets joining overlapping flashings.

UPTURN & NOTCHING
Upturn panel skin between ribs under flashings. Notch flashing to suit ribs.

ROOFING INSTALLATION GUIDE

STEP JOINTS & BOX GUTTERS



DOWNTURN & FIXING

75mm min. cut back of panel core. Turn down skin edge between rib. Tek screws with neo washer (or rivets) at 150 ctrs.

GUTTER, BRACKET & FLASHING

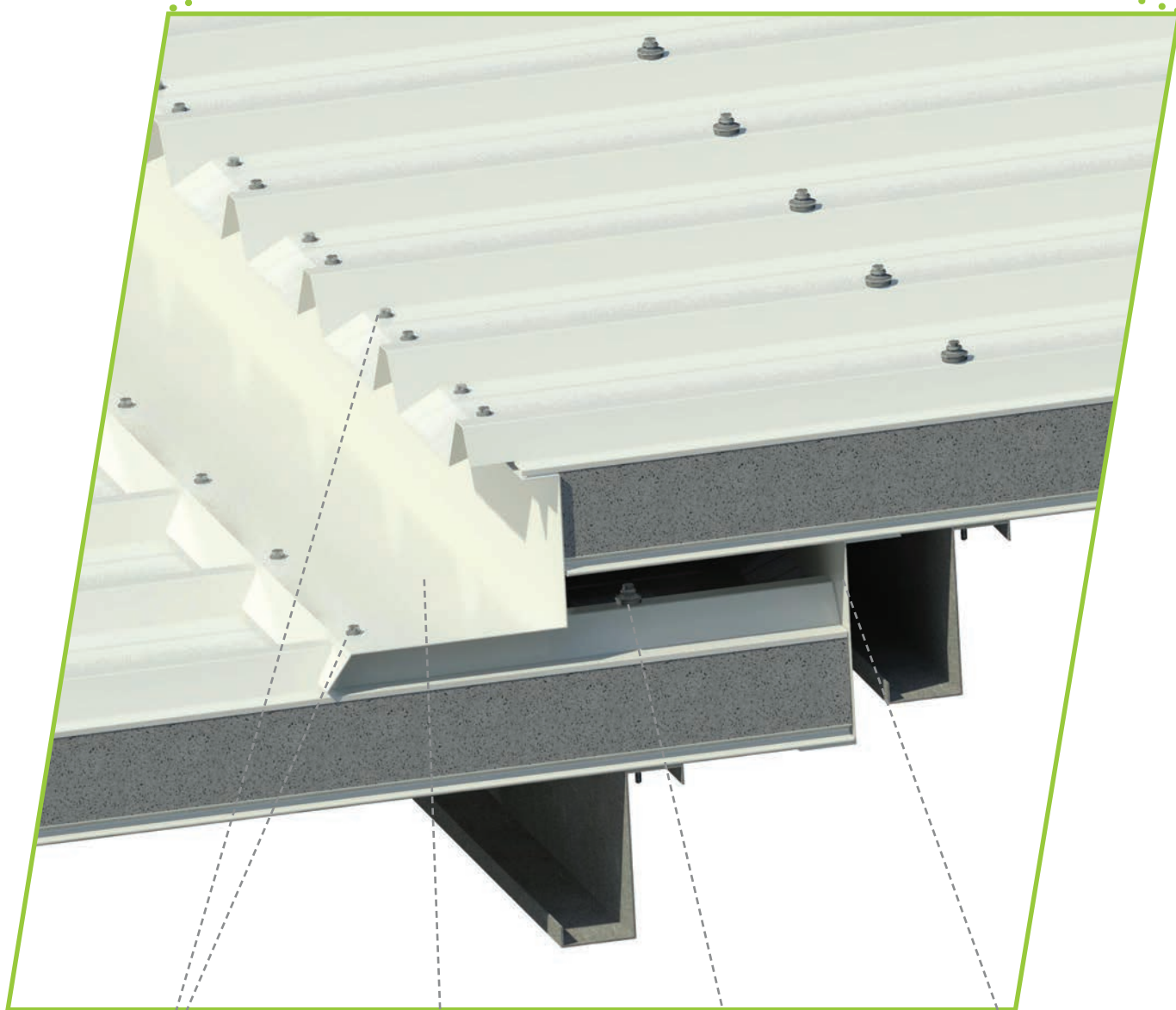
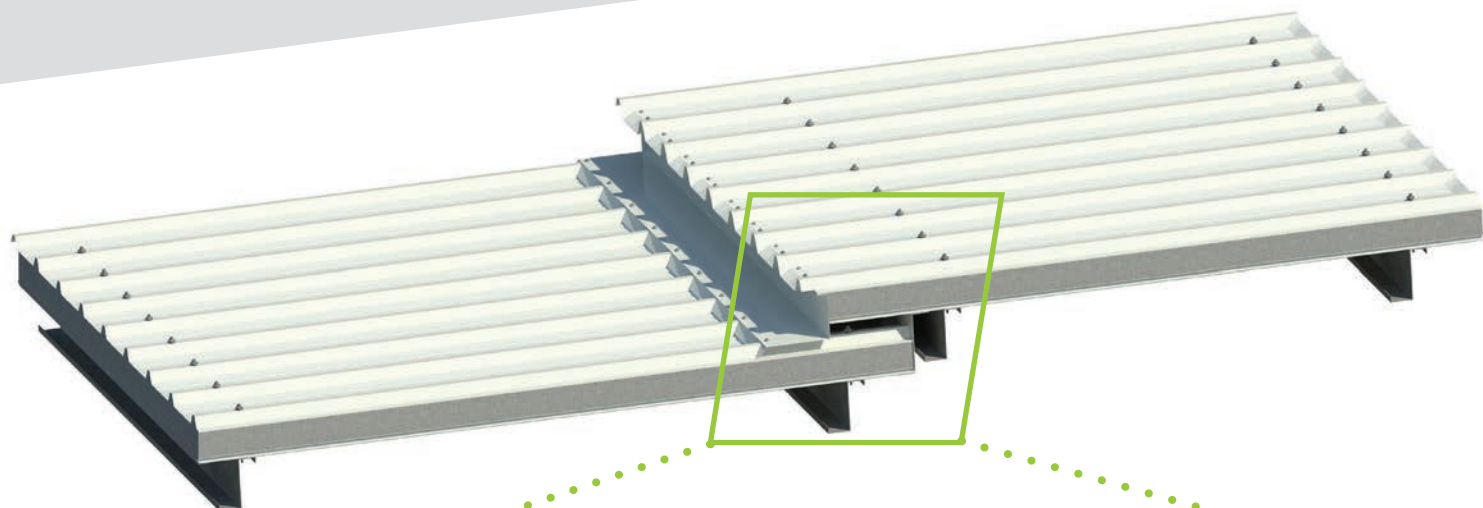
Gutter and gutter bracket by others. 1.2mm steel flashing.

FIXING

6 Gauge sealed rivets joining overlap and panel under

FLASHING

0.6mm minimum thickness pre-painted steel flashing. Colour to match internal skin.



OVERLAP & WEATHER SEAL

200mm minimum roofing overlap. 2 Rows polyurethane sealant.

FIXING

25mm Tek Screw assembly with multi-seal washer fixed through to purlins.

FLASHING

0.6mm minimum thickness pre-painted steel flashing. Colour to match internal skin.

UPTURN & FOAM FILLER

Upturn panel skin at ridge. Fill gap with foam filler.

ROOFING INSTALLATION GUIDE

LAP JOINTS & APRON FLASHINGS

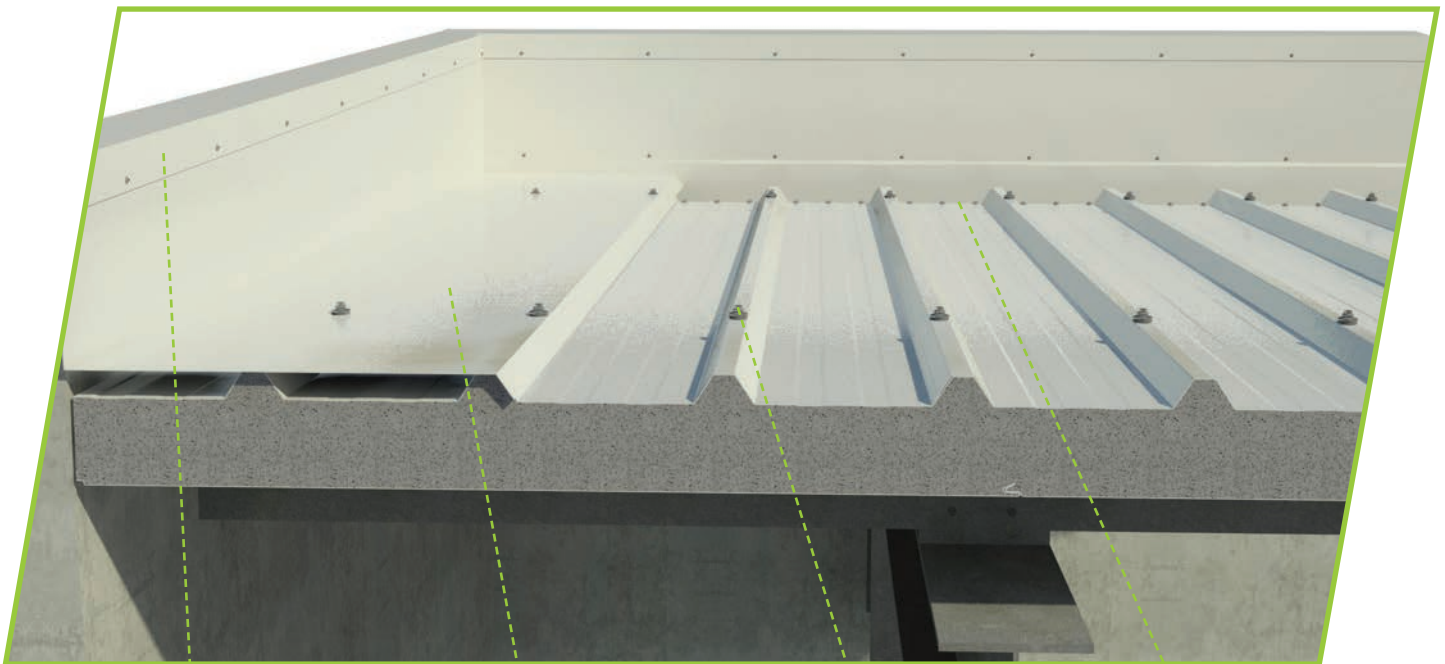
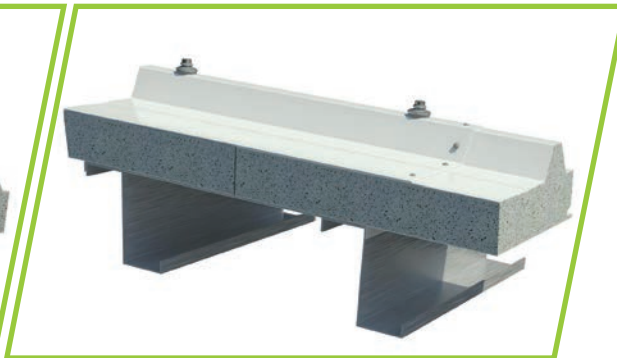
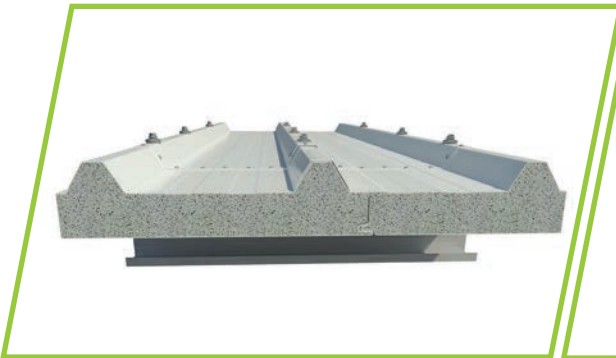


FIXING
14 Gauge tek screws with neoprene washers fixed thorough to purlins.

OVERLAP
200mm minimum roofing overlap.

WEATHER SEAL
Polyurethane sealant

FIXING
6 Gauge sealed rivets joining overlap and panel under



FLASHING & FIXINGS
0.6mm minimum thickness pre-painted steel capping over concrete parapet. Mushroom head SS drive screws at 300 ctrs.

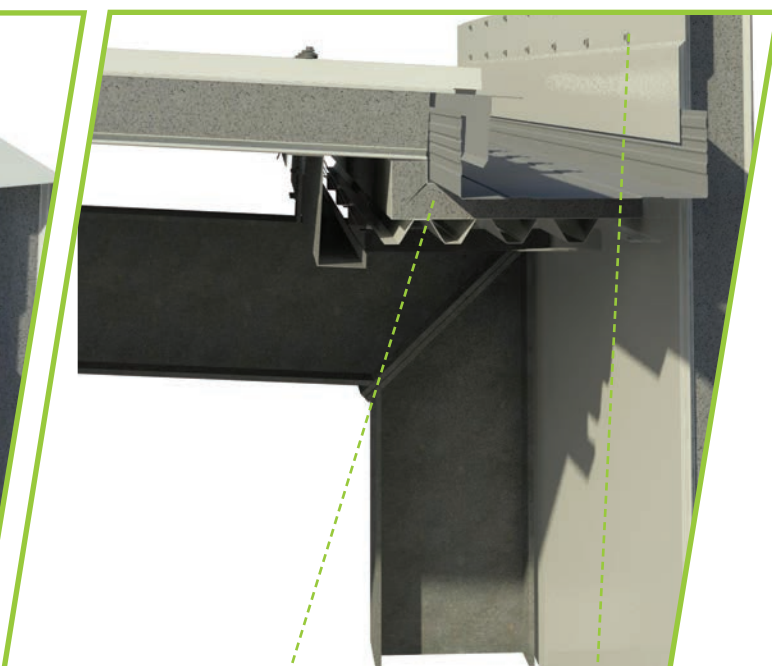
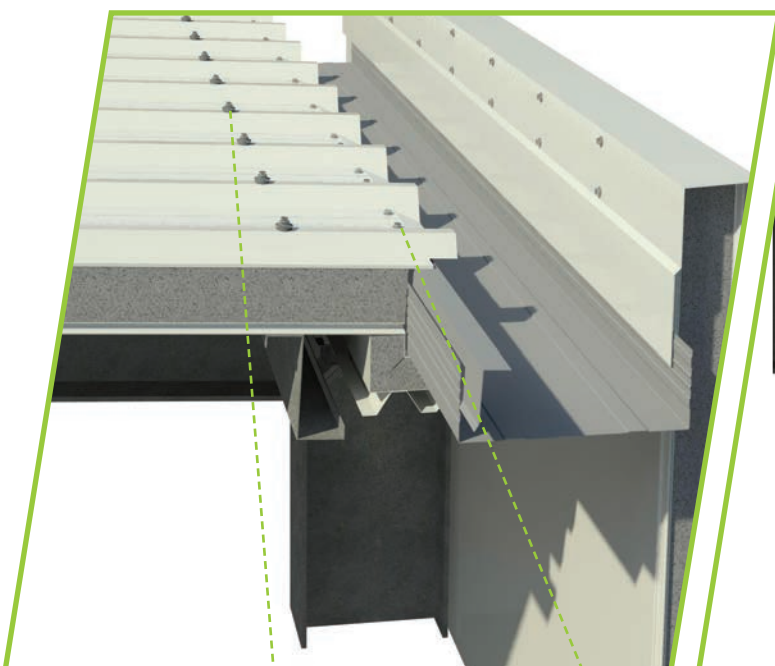
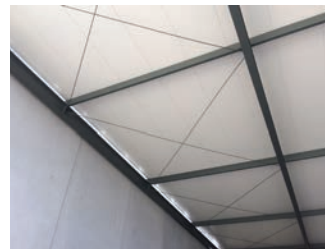
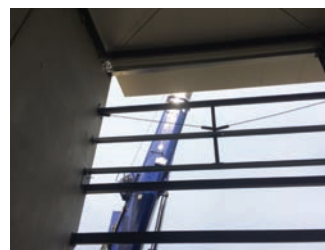
FLASHING & FIXINGS
0.6mm minimum thickness pre-painted steel flashing, to extend over 2 ribs. 14 Gauge tek screws with neoprene washers.

FIXING
14 Gauge tek screws with neoprene washers fixed thorough to purlins.

DOWNTURN & FIXINGS
75mm standard cut back of panel core. Turn down skin between ribs. Tek screws with neoprene washer (or rivets) at 150 ctrs.

ROOFING INSTALLATION GUIDE

BOX GUTTERS



FIXING

25mm Tek Screw assembly with multi-seal washer fixed through to purlins.

DOWNTURN & FIXINGS

75mm standard cut back of panel core. Turn down skin between ribs. Tek screws with neoprene washer (or rivets) at 150 ctrs.

INSULATED BOX GUTTER & GUTTER SUPPORTS

0.6mm pre-painted steel flashing into gutter. Gutter, 50mm insulation and supports by others.

PARAPET FLASHING

0.6mm minimum thickness pre-painted steel flashing. Tek screws with neoprene washer (or rivets) at 300 ctrs.

ROOFING INSTALLATION GUIDE

AMPELITE SKYLIGHT SYSTEM (EEFAS)



The Ampelite EEFAS panel has been developed to compliment all insulated steel panels as produced through various manufacturers. As a totally integrated composite structure, the Ampelite EEFAS System provides benefits that traditional translucent skylights cannot achieve.

The EEFAS System offers excellent thermal insulation properties and is designed to conform to the Building Code of Australia (BCA), National Construction Code Series for Class 2 to Class 9 Buildings especially and including Section J, Energy Efficiency. The Ampelite EEFAS System is manufactured to order being constructed with high quality components designed to completely integrate with the main roofing insulated panels. Exceptional spanning together with the thermal conformities allows designers to achieve natural daylight within any project.

WHY USE AN AMPELITE EEFAS SYSTEM?

Architects today are continually challenged to create energy-efficient buildings that deliver a sound and aesthetic impact. Sustainability for today and our future needs has led to required thermal efficiencies as demanded within our BCA's Part J.

The insulated sandwich panel market is at the forefront in the manufacture of the latest construction techniques providing designers new found flexibility in projects across a wide range of sectors.

The Ampelite EEFAS system provides real thermal advantages as well as natural daylight complementing the aesthetically pleasing, energy efficient, safe, cost effective and sustainable answers insulated panels provide. All Part J requirements including Solar Heat Gain restrictions and U-Value requirements are met by the EEFAS panel.

The Ampelite Skylight System (EEFAS) is composed of 2 main components:

Webglas GC

Webglas GC: Webglas GC is a revolutionary Glass Reinforced Polyester (GRP) sheet that incorporates a heavy gauge woven glass Web matting. This web matting provides a continuous reinforcement resulting in physical properties that are unattainable for standard fibreglass sheeting. The overall strength is such that Webglas GC is rated as trafficable and does not require safety mesh. This is an important aspect to sandwich panel construction which generally does not include safety mesh.

The advanced "Gel Coated" (GC) resin technology manufactured within the Webglas GC sheet is highly UV resistant and provides for a low maintenance translucent sheet.

The Gel Coat encapsulates the main body of the Webglas GC sheet preventing loss of natural daylight transmission and also very importantly, minimal loss of physical properties.

Lexan Thermoclear

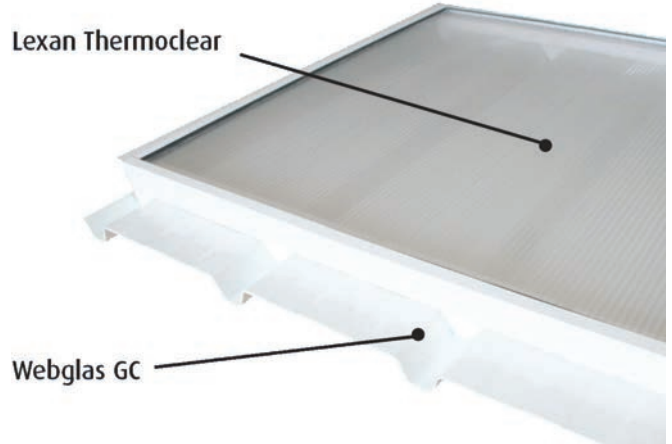
Lexan Thermoclear is a high quality, low maintenance glazing material that is built to last. Manufactured in globally recognised Lexan Polycarbonate resin, the Thermoclear sheet provides crystal clear daylight transmission.

WIND PRESSURE	4 FASTENERS (Crest)	6 FASTENERS (Pan)
1.0kPa	3.0m	-
1.5kPa	2.3m	3.0m
2.0kPa	1.7m	2.6m
2.5kPa	1.4m	2.0m

Thermal Performance

- Solar Heat Gain Co-Efficient 0.14
- U-Value 2.0 W/m².K
- R- Value 0.48

UNDERSIDE OF THE AMPELITE SKYLIGHT SYSTEM (EEFAS)



PERFORMANCE

Clear Lexan Thermoclear sheeting is provided as standard, if specific light and heat transmission figures are required, other colours are available. Please contact your nearest Ampelite office for further information. The Gel Coat (GC) incorporated in the 'Webglas GC' sheet is impervious and offers excellent resistance to surface delamination, UV and weathering.

SPECIFICATION

The Ampelite Energy Efficient Factory Assembled Skylight (EEFAS) system is designed to be used with all insulated panel roofing systems.

All systems are designed for use on commercial buildings, with a roof slope of 2 degrees or greater.

Ampelite EEFAS and its components comply with the Building Code of Australia, Class 2 to 9 Buildings.

Webglas GC complies with Australian and New Zealand standards including AS/NZS1170.2: 2011, AS4256.3: 2006, AS1562.3: 2006 and AS4040.0: 1992.

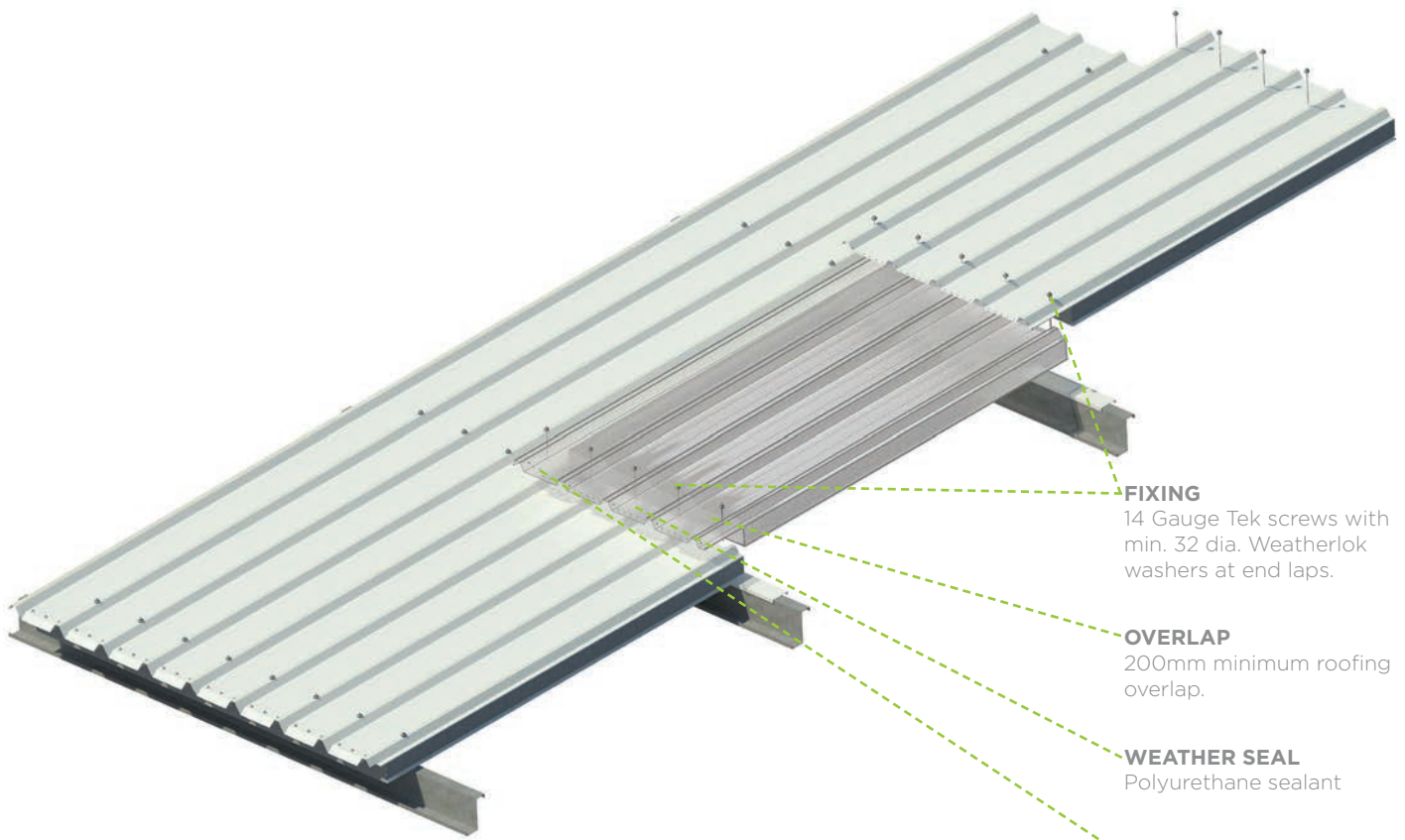
Rooflights shall be Ampelite EEFAS Composite Panels Complying with AS 4256 Parts 1, 3 and 5: 2006.

Sheeting shall be installed in accordance with AS1562.3: 2006. Design and Installation of sheet roof and wall cladding Part 3: Plastic.

WARRANTY

The following benefits are in addition to any rights conveyed by Government regulations and the Trade Practices Act. Ampelite Australia Pty. Ltd. Warrant the energy efficient Factory Assembled Skylight (EEFAS) over:

1. A period of 20 years (pro-rata cover) for the following:
 - (a) The product will not allow water penetration through the actual Panel.
 - (b) The product will not de-laminate or allow protrusion of reinforcing fibres through the surface of the sheet.
2. A period of 10 years (pro-rata cover) for the following:
 - (a) Remain structurally sound and shatter resistant under normal conditions accompanied by winds up to 100km/hr.
 - (b) Excessive yellowing of sheets leading to loss of light transmission exceeding 10% of the original light value when installed below a latitude of 26° South of the equator. Installations above this latitude will be covered by individual warranty based on climatic conditions.



FIXING
14 Gauge Tek screws with min. 32 dia. Weatherlok washers at end laps.

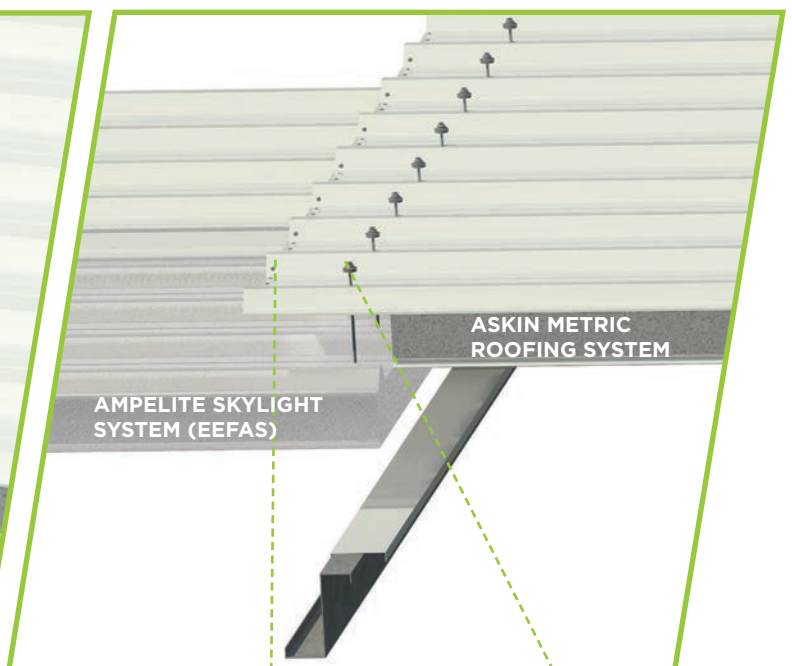
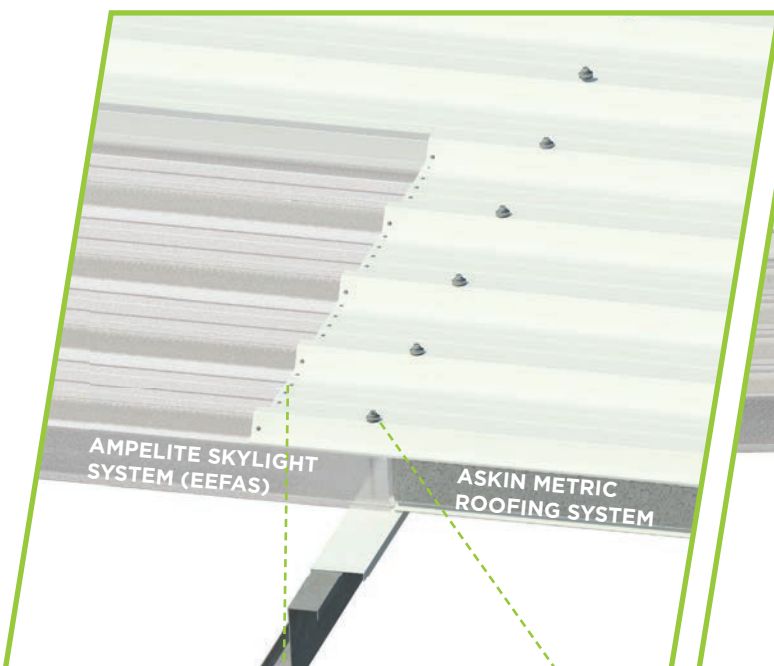
OVERLAP
200mm minimum roofing overlap.

WEATHER SEAL
Polyurethane sealant

FIXING
6 Gauge sealed rivets joining overlap and panel under

Installation

The Ampelite EEFAS system requires a minimum pitch of 2 degrees. The maximum length available is 6500mm. Exact lengths should be calculated based on steelwork plans/drawings. Please refer to span table in this document for maximum spanning. Please also refer to separate Ampelite fixing details as well as the insulated roof panel manufacturer's data.



FIXING & OVERLAP
200mm minimum roofing overlap. Weather Seal Polyurethane sealant. 6 Gauge sealed rivets joining overlap and panel under.

FIXING
14 Gauge Tek screws with min. 32 dia. Weatherlok washers at end laps.

FIXING & OVERLAP
200mm minimum roofing overlap. Weather Seal Polyurethane sealant. 6 Gauge sealed rivets joining overlap and panel under.

FIXING
14 Gauge Tek screws with min. 32 dia. Weatherlok washers at end laps.



FREE CALL 13000 ASKIN

Email: contact@askin.net.au

www.askin.net.au

ASKIN GROUP

150 Albert Road
South Melbourne, VIC, 3205
Phone: +61 3 8769 4816
Email: contact@askin.net.au

WESTERN AUSTRALIA

1 Denninup Way
Malaga, WA, 6090
Phone: +61 8 9249 4022
Email: wa@askin.net.au

QUEENSLAND

129 Cobalt Street
Carole Park, QLD 4300
Phone: +61 7 3718 9500
Email: qld@askin.net.au

VICTORIA & TASMANIA

270 - 280 Hammond Road
Dandenong South, VIC, 3175
Phone: +61 3 8769 4888
Email: vic@askin.net.au

SA & NT

162a Philip Hwy
Elizabeth South, SA, 5112
Phone: +61 8 8252 7188
Email: sa@askin.net.au

NSW & ACT

100 Peter Brock Drive
Eastern Creek, NSW, 2766
Phone: +61 2 8825 2598
Email: nsw@askin.net.au