

# Excellence

HETEROGENEOUS  
FLOORS & WALLS

The colour  
chart  
that sets  
the tone

4	Design inspiration
12	XXL designs
18	A global solution
22	Create inclusive spaces
26	Expertise and sustainability
28	<b>Excellence</b> – glue-down
32	<b>ProtectWALL</b> – Wall Coverings
36	Design overview
46	Tables and codes
50	Technical datasheets

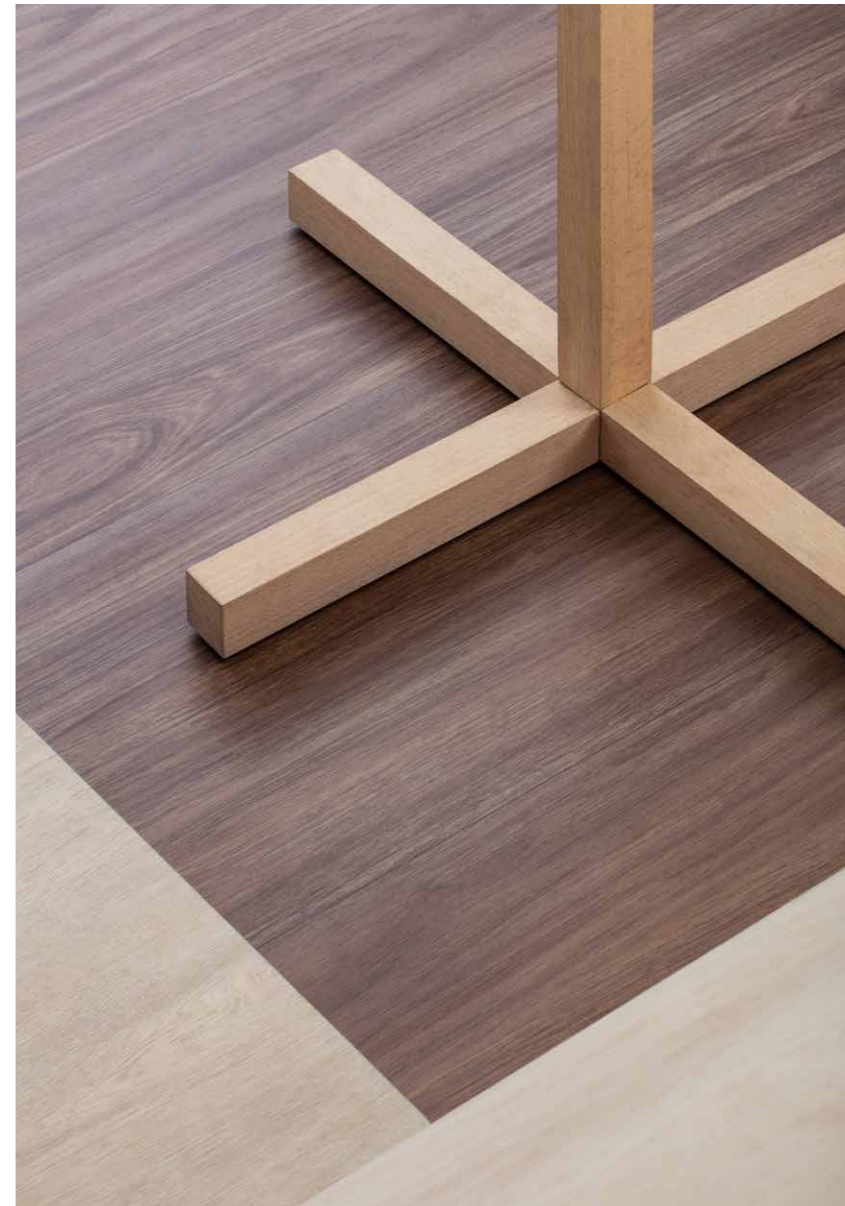
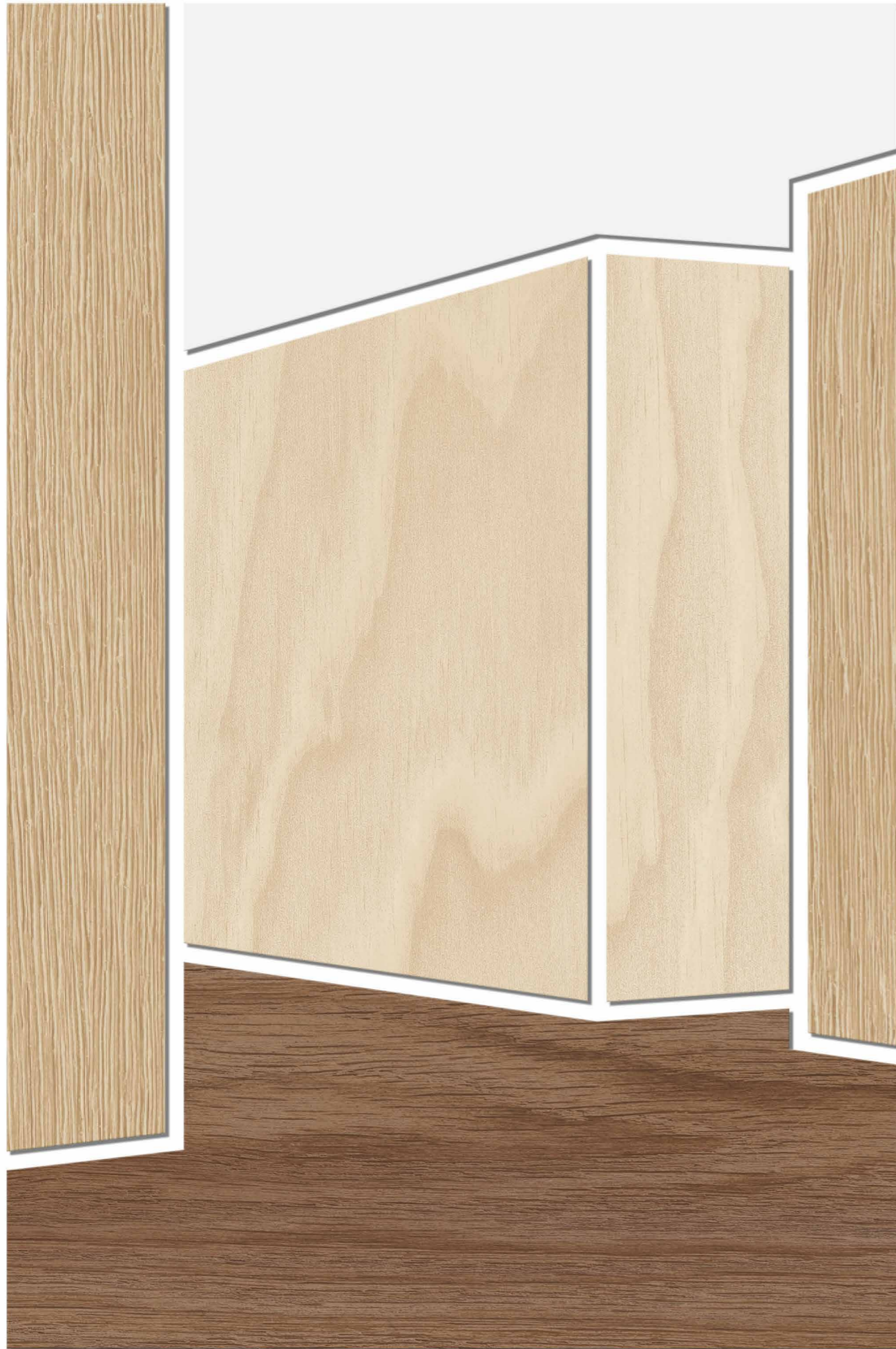
# Contents

# The colour chart that sets the tone

Introducing our new Heterogeneous Vinyl Floors and Walls range, a collection that resonates with architects and designers seeking authenticity in their spaces. From lifelike wood textures to timeless terrazzo, concrete and mineral inspirations, our collection offers classic and contemporary options. Explore a vast array of modern colours and graphics – the essence of the Excellence design story – to bring your architectural visions to life.



# Wood



**Hyperrealism  
of natural hues**

The different wood patterns  
faithfully capture the authenticity  
and diverse tones of wood.

# Minerals

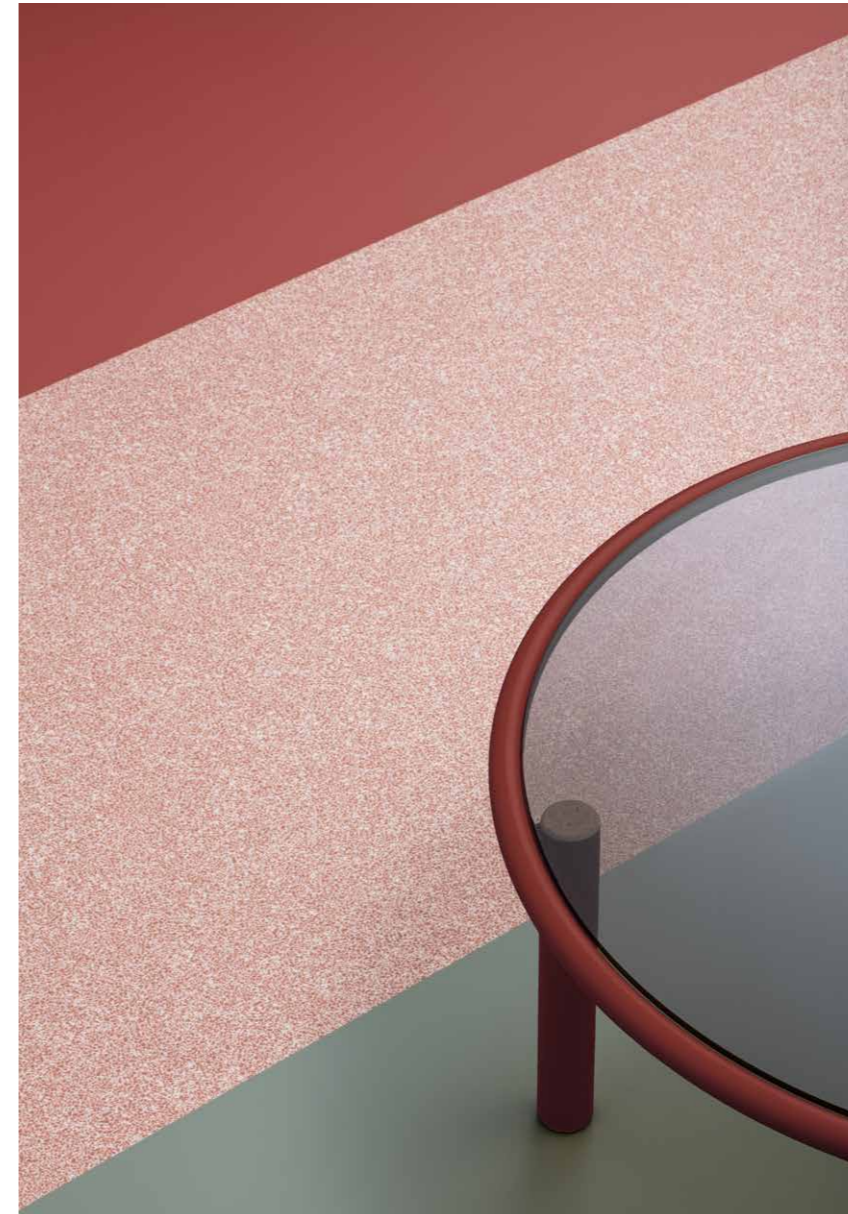
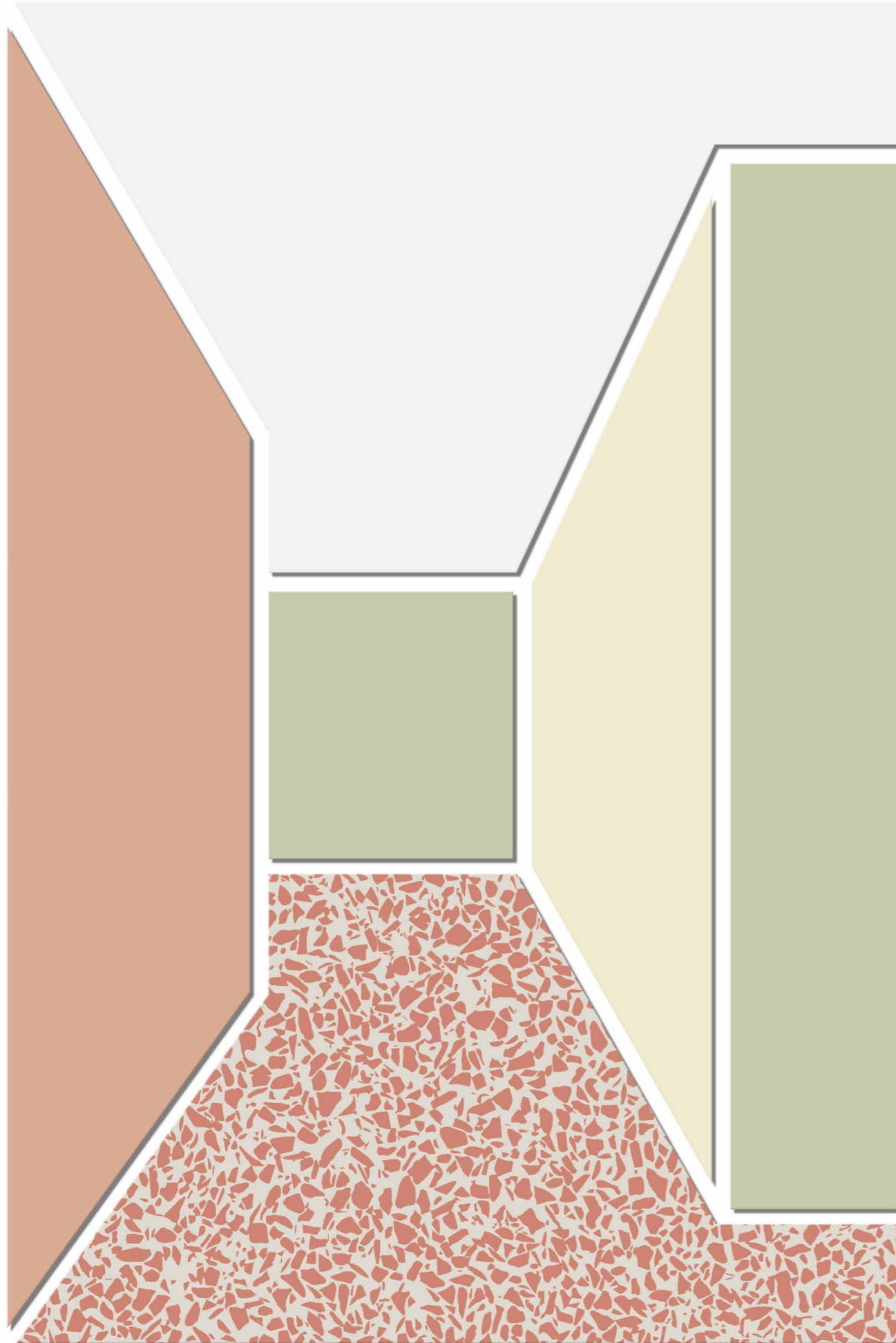


**Elegance of stones,  
modernity of concrete**

The designs draw inspiration from a spectrum of minerals such as stone, marble, basic grey or coloured concrete, as well as the aesthetic appeal of terrazzo.



# Colours



**Contemporary  
colours and graphics**

Introducing new uni-colors with contemporary hues and easy-to-live-with tones – together with a mix of both bold and subtly recognisable graphics.



# For XXL spaces

XXL CARRARA GRANDE  
natural



XXL BRECCIASTONE  
grey



XXL BRECCIACINO  
nude



XXL OAK  
natural



XXL OAK  
golden



**Rediscover  
the limitless naturality  
of the elements**

Find immense inspiration in the seamless replication of XXL marble, wood or stone patterns on floors spanning up to 6 metres in length.

# XXL designs



Standard design



- Authenticity and extra scale to reflect the true diversity of the natural world
- Reproducing the unpredictable beauty of nature
- Unique timeless parquet decor
- Extra realism with 200 × 20 cm planks
- Available in a standard range







# A global solution

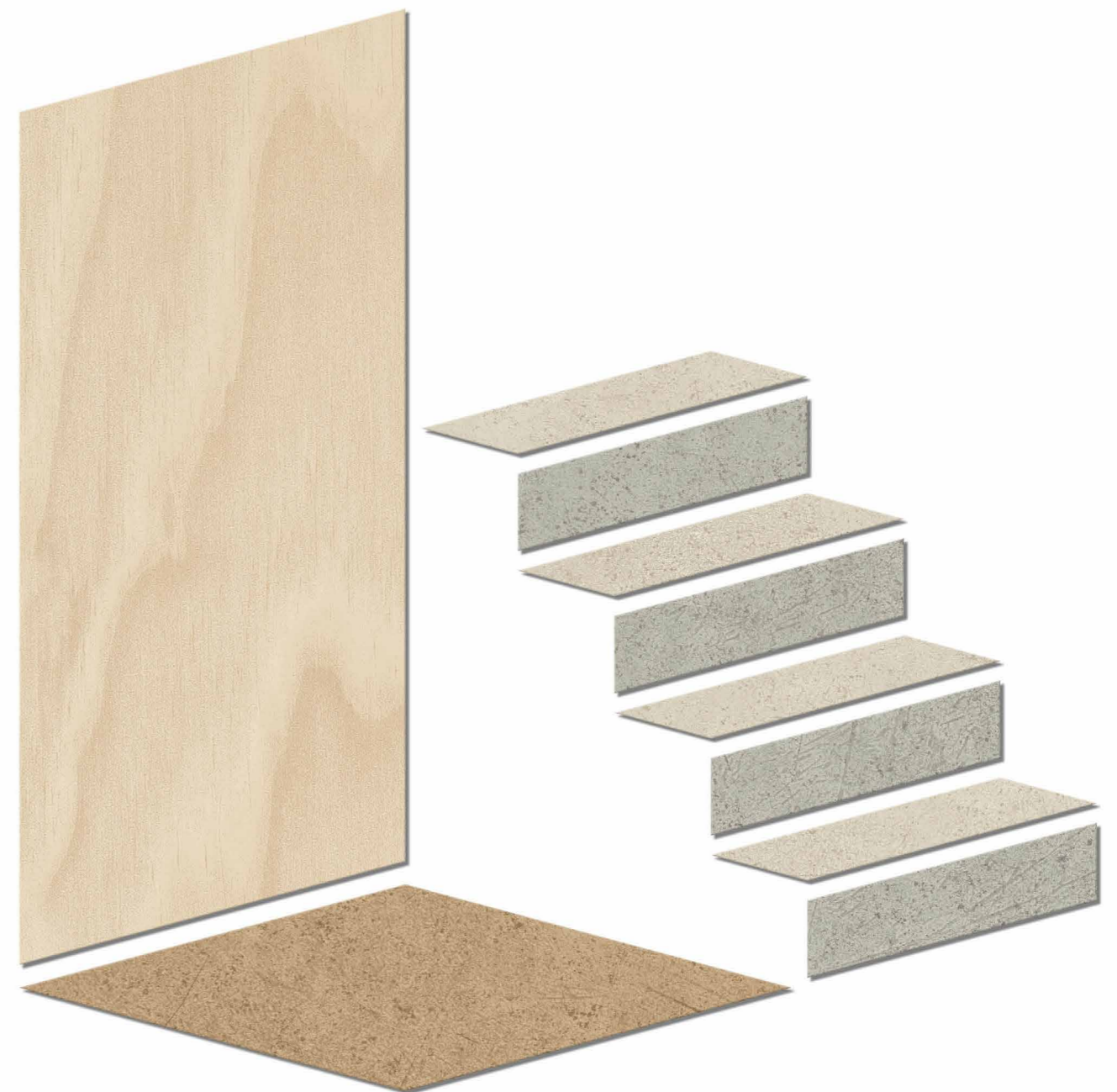
## Excellence

The multi-option floor range, suitable for all segment needs. With compact or acoustic performances and a large array of design choices, including XXL designs.

## ProtectWALL

Heavy-duty wall covering for Healthcare and Education environments. Offers high protection from rough treatment and the need for repeated renovation.

Explore a comprehensive range of **technical solutions tailored for high-traffic environments, spanning floors, walls and stairs.** Each collection is meticulously crafted to deliver optimal sustainable credentials while providing a wide spectrum of inspiration and designs that match perfectly.



# More easy cleaning with Tektanium

## TEKTANIUM™

PU coating uses an innovative polymer system, forming a stronger layer of protection that delivers excellent resistance to **scratches, abrasions, wear and stains**.



### Ease of cleaning and maintenance

**Rated Excellent in cleanability test:**  
Simply wipe with a damp microfibre cloth = no residues visible whatsoever (according to Riboflavin Test, third party evaluation)

Needs less time for cleaning, less water and less chemical products = financial savings and consideration for the environment.

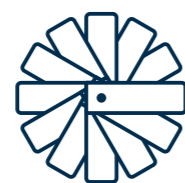
**Highly resistant to bacteria**  
Tested according to ISO 846  
does not encourage bacterial growth

**Improved resistance to stains**  
No absorption of most common chemical agents and solvents used in Healthcare facilities and elderly care homes (ISO 26987 test-rated as not affected by most substances)



### Excellent resistance and durability

Improved resistance to micro-scratches:  
withstands twice as much traffic and heavy duty solicitation



### Matte finish

It also offers a matte finish and is consistently visible from all angles. This enhances the designs and patterns of the range, resulting in more realistic effects.

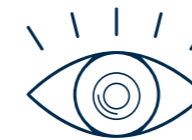




# Creating inclusive spaces with Excellence collections

Thanks to the wide design possibilities of the range, **Excellence collections also cater to inclusive design needs** such as individuals with autism or dementia.

The selection of colours, decors and technical characteristics should be taken into consideration when designing spaces adapted to differences in sensory processing, executive functioning and emotional regulation. The following aspects are all important considerations in choosing the right solution:



## Visual comfort

Use colours and contrasts across the ranges to create:

- Way finding, signage
- Emotionally adapted environments



Select adapted colours and patterns from the collections to create a dementia-friendly design and lessen the impacts of old age and dementia.



## Acoustic comfort

Make sure to adapt acoustics through a vast array of floors with acoustic performances:

- Minimise in-room ambient noise
- Reduce noise coming from adjacent rooms
- Tapiflex with 19 dB, rated Class B



## Safe and healthy environment

Choose floors and walls that will promote wellbeing inside the building:

- Optimal indoor air quality
- R10 slip resistance across the whole range
- Rollability and walking comfort

# How to choose your floor from our range?



You need **more acoustic comfort**

Excellent sound reduction  
+ good rollability



**Tapiflex Excellence**  
19 dB



Excellence floors offer **the adapted solutions and options needed** for your projects.

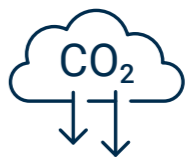
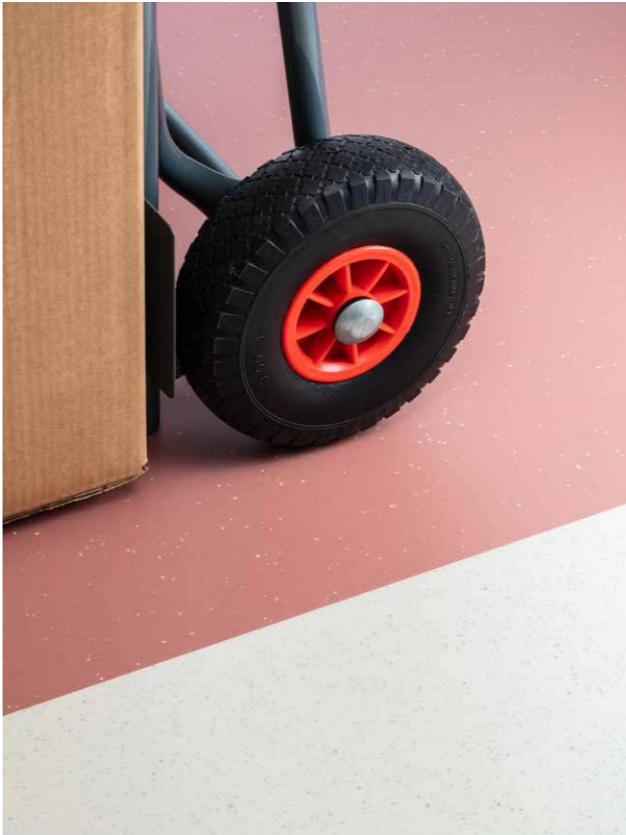


You need **more rollability & durability**

Excellent rollability  
+ good reduction of in-room impact noise (Class B)



**Acczent Excellence Compact+**  
(8 dB)



You need **a low carbon footprint**

Low carbon footprint  
+ excellent acoustic comfort



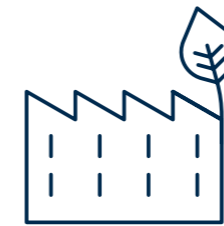
**Tapiflex Genius Acoustic**  
19 dB



# Expertise and sustainability Made in Europe

## Many years of expertise for quality you can trust

Our Excellence collections are designed and manufactured at our production plants in Europe, ensuring the development of an advanced and sustainable range.



The range is manufactured in our factories that live up to strict European quality standards and embrace eco-conscious practices.



By choosing Tarkett Heterogeneous solutions, you are opting for products proudly Made in Europe, thereby making a conscious decision to positively impact the environment by reducing transportation distances.



As our Heterogeneous collections are produced in Europe, you not only support local European economies but also promote local European craftsmanship and social responsibility.

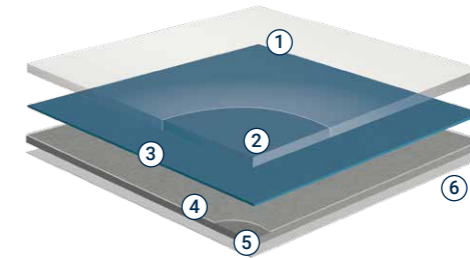


Because our Excellence collections are produced in Europe, we can ensure lower transportation costs to our European customers and positively impact our products' carbon footprint.

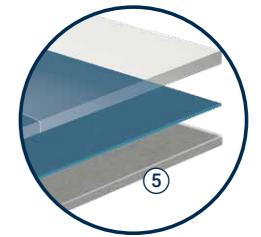
# Excellence

Excellence floors are the responsible solution if you need a high-traffic-resistant floor with creative possibilities and adapted performances. It offers a choice of installation methods (glue-down) and is available with acoustic performance for sound reduction or a compact profile for improved rollability and resistance to indentation. The range offers a renewed palette of classic and on-trend designs, with an array of materials, patterns and colours for more creativity. The natural designs are extremely authentic and realistic, giving you a solution that is as beautiful as original wood or minerals.

## Excellence Glue-down profiles



**Tapiflex Acoustic**  
Impact sound reduction 19 dB



**Accent Compact+**  
Excellent rollability,  
Good sound reduction (8 dB)  
and Class B for in-room impact  
noise reduction

- ① Tektanium PU coating uses an innovative polymer system – forming a stronger layer of protection that delivers excellent resistance to scratches, abrasions, wear and stains.
- ② Pure PVC transparent wear layer for the best resistance to traffic and wear
- ③ High-quality printed designs for a vast selection of colours and patterns

- ④ Improved high-density glass fibre non-woven reinforcement for excellent dimensional stability and resistance to furniture
- ⑤ Reinforced solid homogeneous calendared sheet made of recycled Vinyl for resistance to indentation and tearing. The Compact+ version offers a certified 8dB sound reduction and Class B in-room impact sound reduction.
- ⑥ The Tapiflex version has high-density closed-cell foam backing for sound reduction, higher rollability and underfoot comfort

# Glue-down

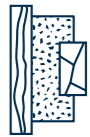


**Tapiflex Excellence**  
19 db



**Acczent Excellence Compact+**  
8 dB Impact sound reduction  
/ Class B reduction of in-room impact noise

## Creative Colour Chart



**3 Inspirations**  
Wood – Minerals – Colours



**93 designs**  
Matte finish



Hyperrealism  
of wood textures  
and materials



**5 XXL formats**  
2 x 6 m. No repeat



**Approved**  
Dementia-friendly  
designs

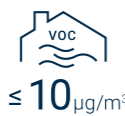
## Responsible Flooring



Produced  
in Europe



Recycled  
content



Optimal indoor  
air quality



**No phthalates**  
**No biocides**  
**No heavy metals**

## Improved Performance

**TEKTANIUM™**  
Innovative coating for easier  
cleanability and cost-effective  
maintenance



Extreme durability  
and scratch resistance



Improved resistance  
to stains (ISO 26987  
test-rated as not affected  
by most substances)



Excellent cleanability :  
no residues visible  
whatsoever  
(Riboflavin test)



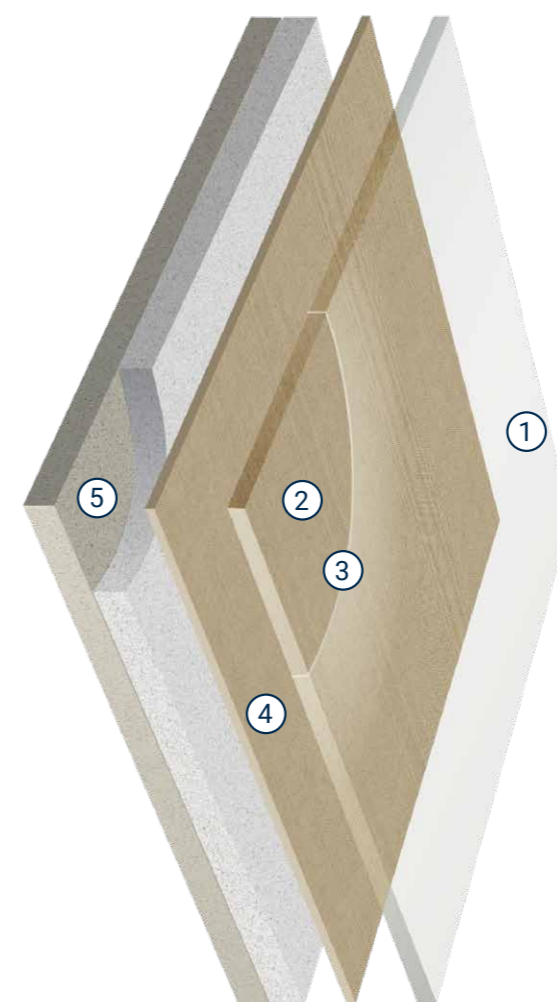
\* off-cuts and post-installation recycling



# ProtectWALL

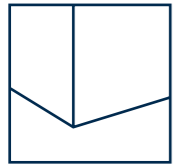


In busy education and healthcare environments, as well as buzzing hospitality and office areas, ProtectWALL offers high protection from rough treatment and the repeated need for renovation. ProtectWALL stands up to scratches, impacts and staining agents, is easy to clean and preserves its appearance even after repeated cleaning. The range embodies a contemporary spirit, resonating deeply with the essence of nature. Available in a captivating array of colours and patterns that encapsulate the fusion of modernity with timeless natural motifs.



- ① Top Clean XP PUR Reinforced: Excellent resistance to scuffing, soiling and staining. Easy maintenance.
- ② 4 different embossing options available
  - For more elegant designs:
    - Tisse: warm touch and feeling of textiles
    - Flat: for a perfect matte contemporary finish
    - Paper: timeless dry and natural effect, similar to paint and wallpaper with a matte effect
  - Special for cleanrooms:
    - Aquarelle: certified for cleanrooms
- ③ Clear wear layer: 0.15 mm Excellent resistance prevents scratches and abrasion.
- ④ High-definition printing for more realistic and varied designs. Helio or digital printed.
- ⑤ Intermediate and backing layers for improved resistance to impact.

# ProtectWALL



## ProtectWALL 1.5 B-s2

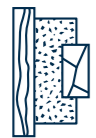
Heavy-duty Wall Covering for exceptional impact and scratch resistance



## ProtectWALL CleanRoom

Heavy-duty Wall Covering designed to ensure hygiene in cleanrooms

### Captivating Colour Chart



**3 Inspirations**  
Wood – Minerals – Colours



**26 designs**  
Matte finish



**Approved**  
Dementia-friendly designs



**Matching**  
floors and walls available in Tarkett's range

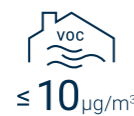
### Responsible Wall Covering



Produced in Europe



Recycled content



Optimal indoor air quality



No phthalates  
No biocides  
No heavy metals

### Highly resistant



**Exceptional impact and scratch resistance**  
EN259-2 – Excellent with no visible bursts or cracking



**Excellent cleanability no residues visible whatsoever**  
(Riboflavin test)



**Highly resistant to bacteria**  
ISO 846 – Does not encourage bacterial growth

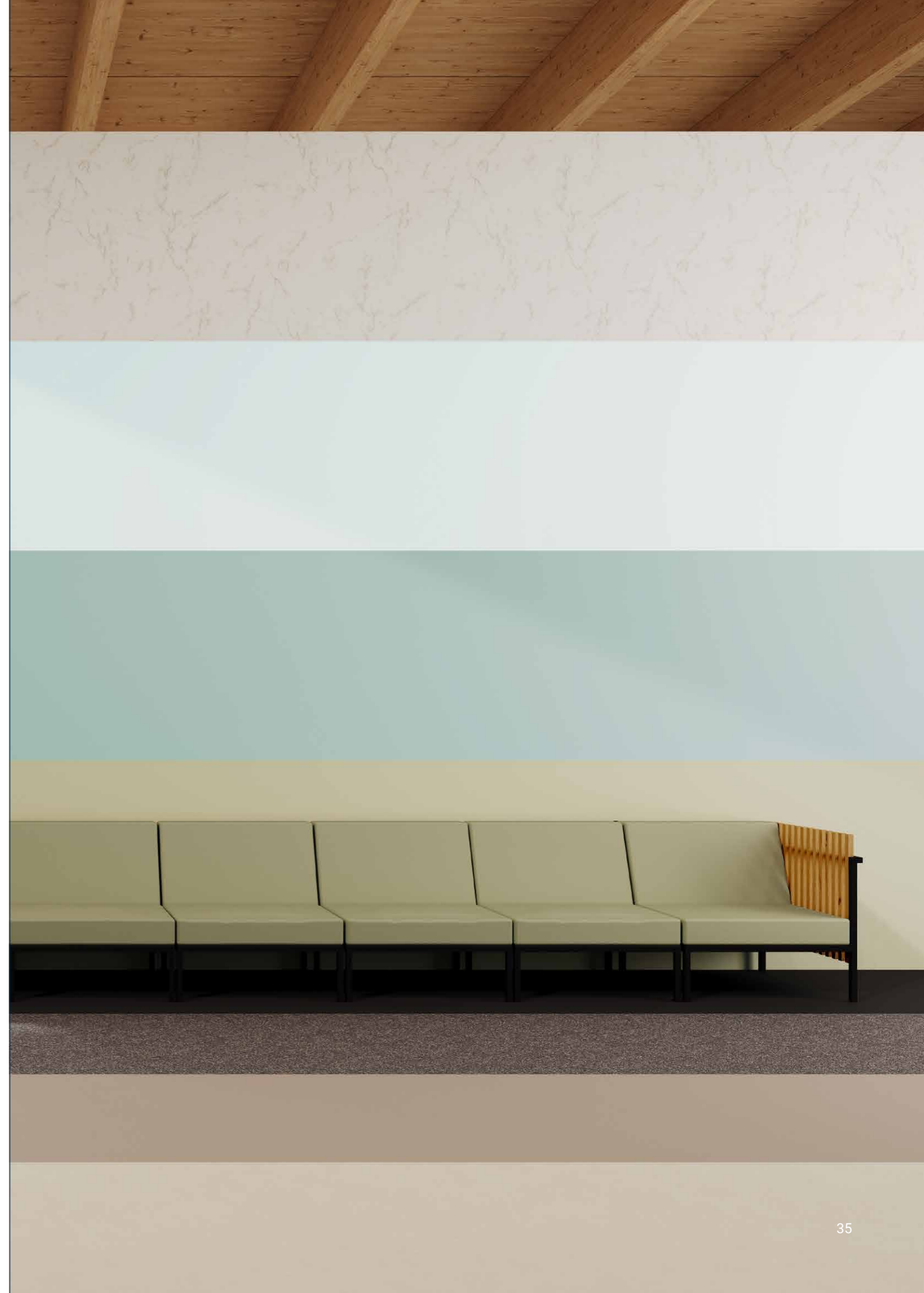


**Hygiene in focus**  
Reduces germ infiltration by limiting the number of joints needed

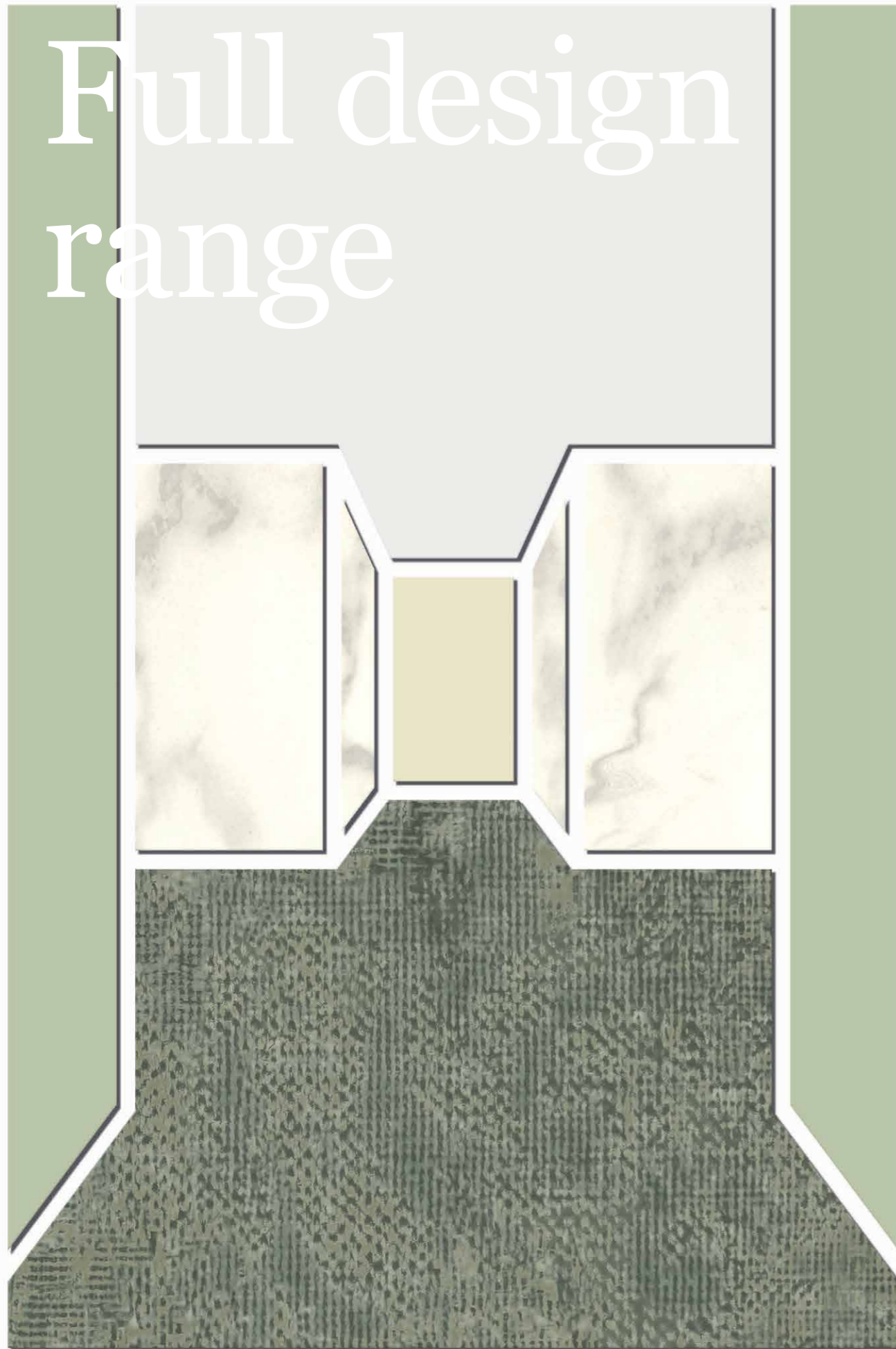


**Cleanroom-suitable material**  
ISO 14644-1: Highest cleanroom standard in healthcare environments\*\*

\* off-cuts and post-installation recycling. – \*\* ProtectWall CR only – Tarkett level certified by the Fraunhofer Institute



# Full design range



## Excellence collection

XXL formats



**XXL CARRARA GRANDE**  
natural – 2 × 6 m



**XXL BRECCIASTONE**  
grey – 2 × 6 m



**XXL BRECCIACINO**  
nude – 2 × 6 m



**XXL OAK**  
natural – 2 × 6 m



**XXL OAK**  
golden – 2 × 6 m

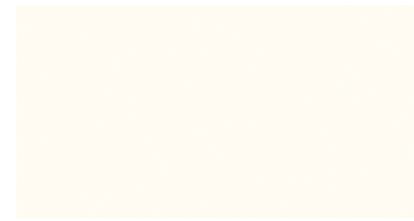
# Excellence collection



**UNI**  
deep yellow  
LRV 38.5%  
NCS S 2030-Y20R



**UNI**  
deep red  
LRV 16.6%  
NCS S 3040-Y90R



**UNI**  
white  
LRV 66.3%  
NCS S 1002-Y50R



**UNI**  
intense kaki  
LRV 24.7%  
NCS S 5005-G50Y



**UNI**  
intense brick  
LRV 19.2%  
NCS S 4020-Y80R



**UNI**  
medium grey  
LRV 38.0%  
NCS S 3502-R50B



**UNI**  
deep green  
LRV 12.4%  
NCS S 6010-B50G



**UNI**  
dark beige  
LRV 28.9%  
NCS S 4005-Y20R



**UNI**  
warm grey  
LRV 19.0%  
NCS S 5502-R50B



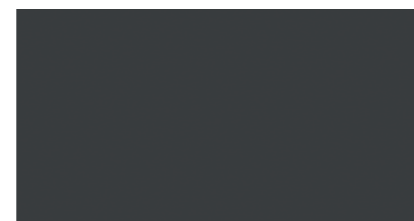
**UNI**  
intense aqua  
LRV 36.0%  
NCS S 3005-B20G



**UNI**  
dark grey  
LRV 14.0%  
NCS S 6005-R80B

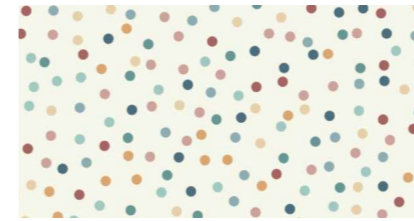


**UNI**  
deep blue  
LRV 11.9%  
NCS S 6010-R70B

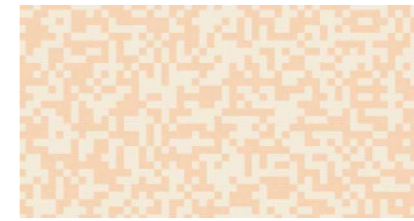


**UNI**  
black  
LRV 4.9%  
NCS S 8000-N

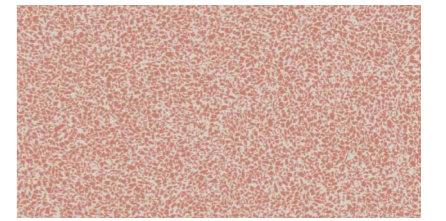
# Excellence collection



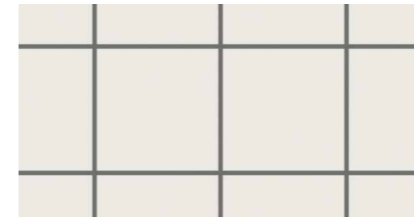
**GOMMETTE**  
multico  
LRV 62.2%  
NCS S 1002-Y80R



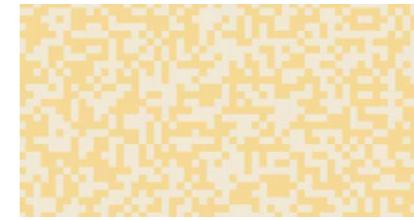
**QR CODE**  
soft brick  
LRV 57.09%  
NCS S 2005-B



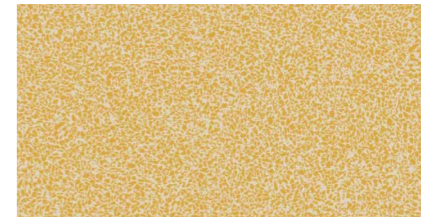
**FRAGMENTO**  
deep brick  
LRV 38.5%  
NCS S 3020-Y80R



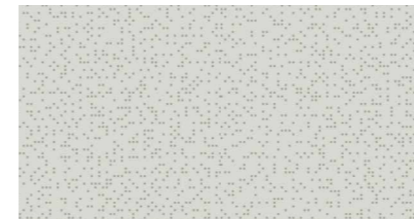
**QUADRILLAGE**  
black & white  
LRV 58.5%  
NCS S 2002-R50B  
NCS S 6502-R50B



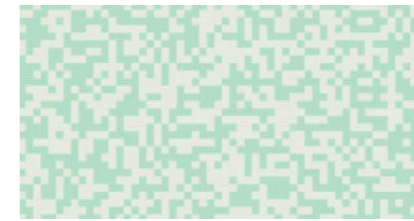
**QR CODE**  
soft yellow  
LRV 58.8%  
NCS S 1515-Y20R



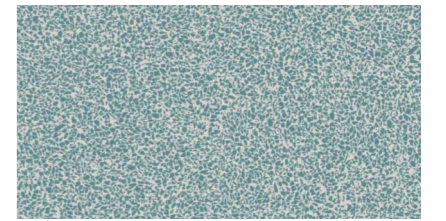
**FRAGMENTO**  
deep yellow  
LRV 46.6%  
NCS S 2030-Y10R



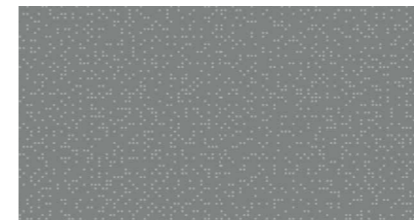
**MATRIX²**  
light grey  
LRV 45.5%  
NCS S 2502-R



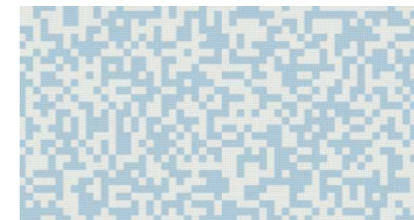
**QR CODE**  
soft aqua  
LRV 53.4%  
NCS S 2000-N



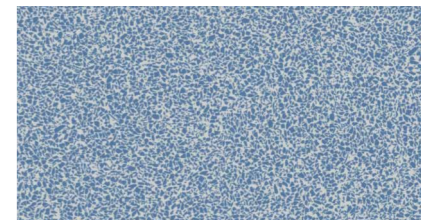
**FRAGMENTO**  
deep green  
LRV 42.9%  
NCS S 4010-B30G



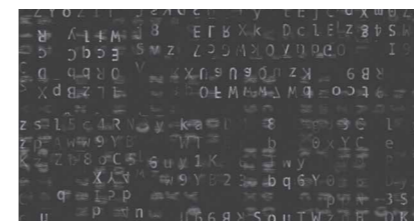
**MATRIX²**  
dark grey  
LRV 17.5%  
NCS S 5502-B



**QR CODE**  
soft sky blue  
LRV 52.0%  
NCS S 1515-R80B



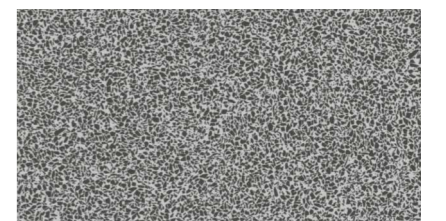
**FRAGMENTO**  
deep turquoise  
LRV 35.8%  
NCS S 3010-R90B



**ENCRYPTON**  
black & white  
LRV 8.1%  
NCS S 7500-N



**QR CODE**  
soft grey  
LRV 54.0%  
NCS S 2502-R50B

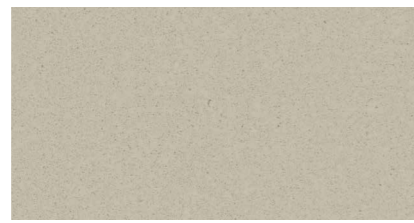


**FRAGMENTO**  
deep black  
LRV 23.9%  
NCS S 6502-R50B

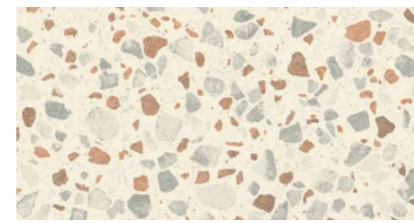
# Excellence collection



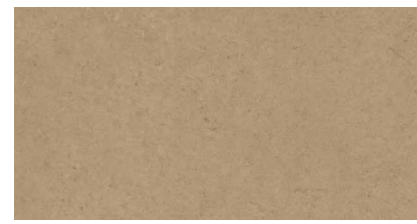
**CONCRETE**  
brick  
LRV 24.7%  
NCS S 4020-Y70R



**GRANITO**  
warm grey  
LRV 36.0%  
NCS S 3502-Y50R



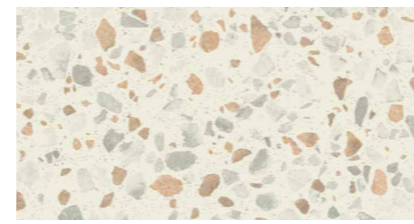
**TERRAZZO GRANDE**  
brick  
LRV 57.3%  
NCS S 4010-Y70R  
NCS S 1502-Y50R



**CONCRETE**  
ochre  
LRV 26.8%  
NCS S 4020-Y10R



**CONCRETE**  
warm grey  
LRV 18.0%  
NCS S 6005-Y20R



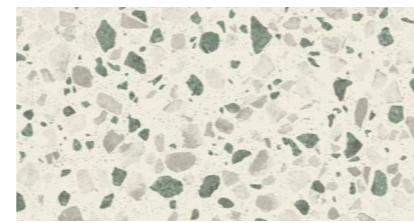
**TERRAZZO GRANDE**  
ochre  
LRV 58.0%  
NCS S 4010-Y30R  
NCS S 1502-Y50R



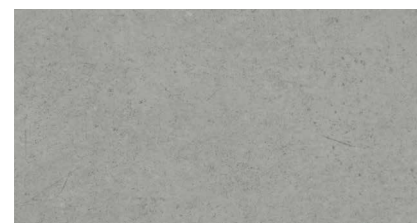
**CONCRETE**  
grey beige  
LRV 32.4%  
NCS S 4005-Y20R



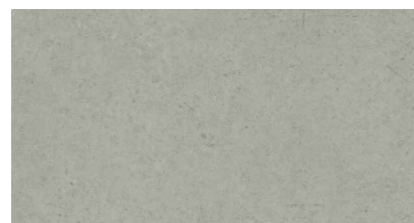
**CONCRETE**  
chalk  
LRV 45.3%  
NCS S 2502-Y50R



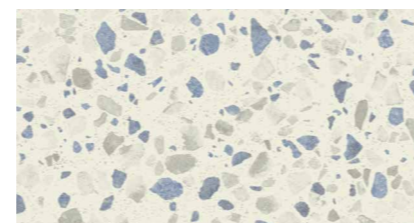
**TERRAZZO GRANDE**  
green  
LRV 59.5%  
NCS S 4005-R80B  
NCS S 1502-Y50R



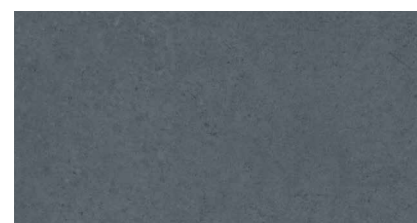
**CONCRETE**  
blue  
LRV 26.7%  
NCS S 4000-N



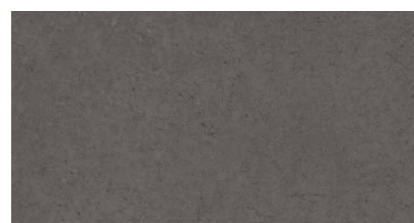
**CONCRETE**  
cool grey  
LRV 32.0%  
NCS S 3502-Y80R



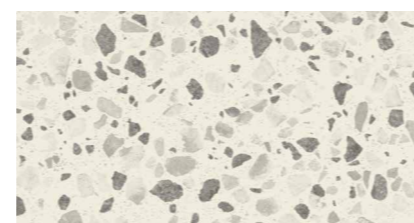
**TERRAZZO GRANDE**  
blue  
LRV 59.7%  
NCS S 4005-G50Y  
NCS S 1502-Y50R



**CONCRETE**  
deep blue  
LRV 10.8%  
NCS S 7005-B

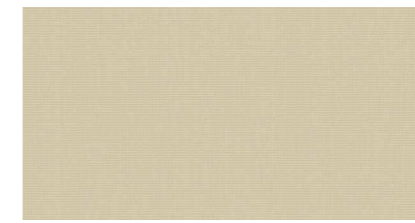


**CONCRETE**  
dark grey  
LRV 11.6%  
NCS S 6502-Y80R

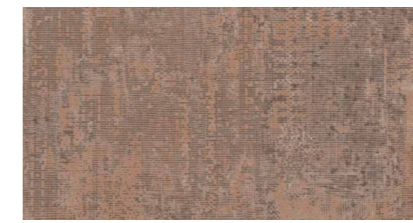


**TERRAZZO GRANDE**  
grey  
LRV 60.2%  
NCS S 5502-Y80R  
NCS S 1502-Y50R

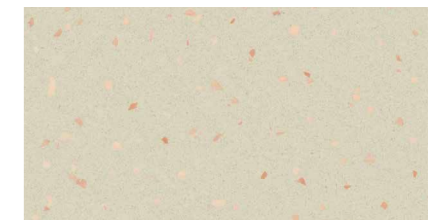
# Excellence collection



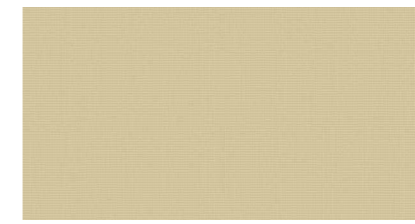
**TISSAGE²**  
soft grege  
LRV 37.4%  
NCS S 3005-Y20R



**CARPET**  
brick  
LRV 25.7%  
NCS S 5010-Y50R



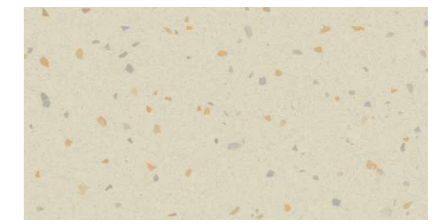
**TERRAZZO MURANO**  
terracotta  
LRV 43.1%  
NCS S 2502-Y50R



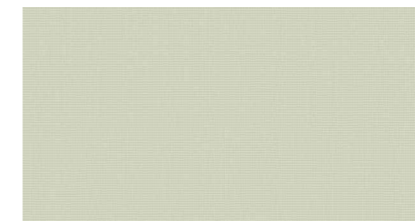
**TISSAGE²**  
soft beige  
LRV 43.0%  
NCS S 3010-Y20R



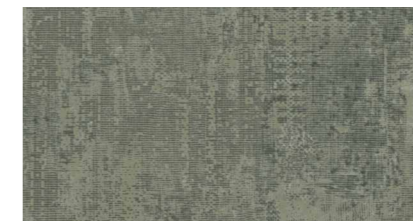
**CARPET**  
ochre  
LRV 25.7%  
NCS S 4010-Y10R



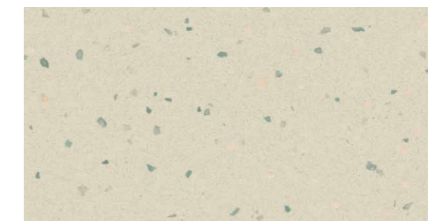
**TERRAZZO MURANO**  
gold & silver  
LRV 43.2%  
NCS S 2502-Y50R



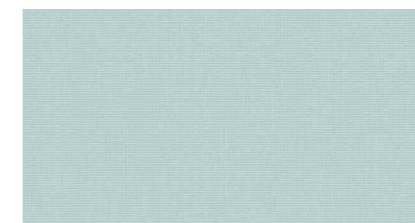
**TISSAGE²**  
soft kaki  
LRV 42.1%  
NCS S 2502-Y



**CARPET**  
moss  
LRV 18.6%  
NCS S 6005-G50Y



**TERRAZZO MURANO**  
petrol  
LRV 43.1%  
NCS S 2502-Y50R



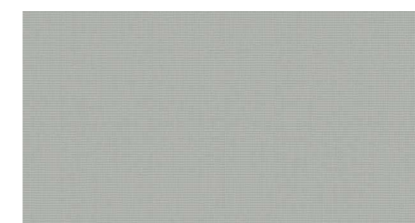
**TISSAGE²**  
soft aqua  
LRV 43.0%  
NCS S 3005-B



**CARPET**  
intense jean  
LRV 17.8%  
NCS S 5005-R80B



**TERRAZZO**  
natural grey  
LRV 45.5%  
NCS S 2502-Y50R



**TISSAGE²**  
soft grey  
LRV 30.7%  
NCS S 4000-N



**CARPET**  
dark grey  
LRV 19.9%  
NCS S 5502-Y80R



**CARPET**  
white grey  
LRV 41.3%  
NCS S 2502-Y

# Excellence collection



**OSB**  
natural  
LRV 43.2%  
NCS S 2010-Y20R



**PLYWOOD**  
natural  
LRV 39.4%  
NCS S 3010-Y20R



**OAK TREE**  
beige  
LRV 40.7%  
NCS S 3010-Y40R



**OAK TREE**  
golden  
LRV 30.9%  
NCS S 4020-Y30R



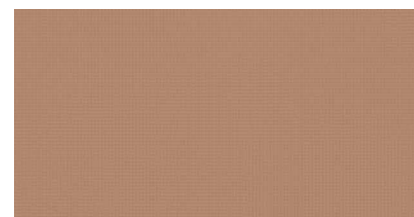
**SCANDINAVIAN OAK**  
beige  
LRV 37.4%  
NCS S 3010-Y30R



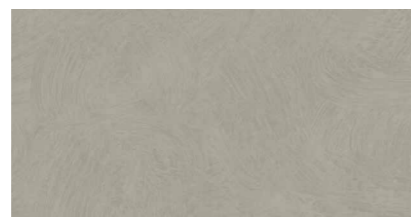
**SCANDINAVIAN OAK**  
light beige  
LRV 41.2%  
NCS S 3005-Y20R



**SCANDINAVIAN OAK**  
dark grey  
LRV 28.7%  
NCS S 5502-Y50R



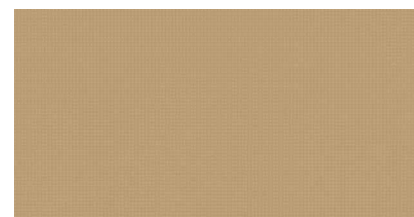
**TAPPED METAL**  
copper  
LRV 27.3%  
NCS S 4020-Y40R



**ESQUISSE**  
light grey  
LRV 30.0%  
NCS S 4502-Y50R



**TERRAZZO CONCRETE**  
beige  
LRV 46.6%  
NCS S 2005-Y50R



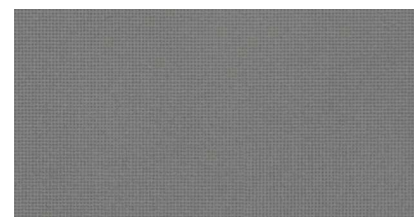
**TAPPED METAL**  
brass  
LRV 32.0%  
NCS S 3020-Y20R



**ESQUISSE**  
medium grey  
LRV 19.5%  
NCS S 5502-R



**TERRAZZO CONCRETE**  
grey  
LRV 39.5%  
NCS S 2502-Y50R



**TAPPED METAL**  
grey  
LRV 39.5%  
NCS S 2502-Y50R



**ESQUISSE**  
dark grey  
LRV 12.6%  
NCS S 6500-N



**TERRAZZO CONCRETE**  
black  
LRV 13.4%  
NCS S 6500-N

# Excellence collection



**VARIANT OAK**  
beige  
LRV 33.1%  
NCS S 3010-Y40R



**WOOD CHEVRON**  
beige  
LRV 28.4%  
NCS S 4020-Y30R



**CHATILLON OAK**  
golden  
LRV 23.6%  
NCS S 4020-Y40R



**VARIANT OAK**  
natural  
LRV 27.8%  
NCS S 4020-Y30R



**OAK LONGSTRIPE**  
classical  
LRV 23.9%  
NCS S 4020-Y30R



**CHATILLON OAK**  
natural  
LRV 27.3%  
NCS S 4020-Y30R



**VARIANT OAK**  
golden  
LRV 24.4%  
NCS S 4020-Y30R



**OAK LONGSTRIPE**  
classical  
LRV 23.9%  
NCS S 4020-Y30R



**CHATILLON OAK**  
light brown  
LRV 38.5%  
NCS S 3010-Y30R



**VARIANT OAK**  
nut  
LRV 20.4%  
NCS S 5010-Y30R



**CHATILLON OAK**  
grey  
LRV 23.0%  
NCS S 5005-Y50R



**CHATILLON OAK**  
white  
LRV 45.3%  
NCS S 2005-Y40R



**VARIANT OAK**  
warm brown  
LRV 14.9%  
NCS S 6010-Y50R



**VARIANT OAK**  
brown grey  
LRV 13.5%  
NCS S 6005-Y50R



**CHATILLON OAK**  
beige  
LRV 30.2%  
NCS S 3010-Y30R

# ProtectWALL collection



**UNI**  
terracotta LRV 31.11%  
NCS S 3020-Y60R



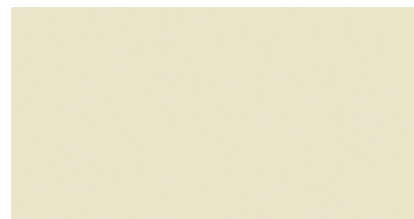
**UNI**  
grege LRV 40.75%  
NCS S 3005-Y20R



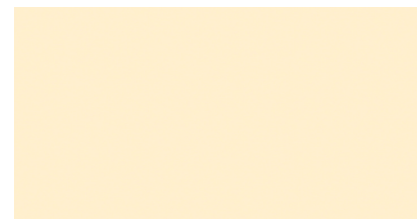
**GEMSTONE**  
pastel LRV 71.62%  
NCS Background: S 1002-Y50R  
NCS Pattern 1: S 3030-R  
NCS Pattern 2: S 3030-Y10R  
NCS Pattern 3: S 4502-Y80R



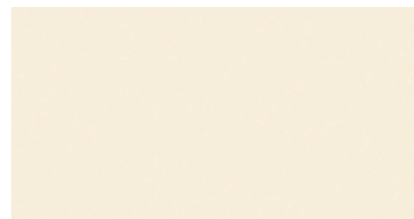
**UNI**  
ochre LRV 51.06%  
NCS S 2020-Y20R



**UNI**  
linen LRV 57.94%  
NCS S 2005-Y



**UNI**  
light beige LRV 69.91%  
NCS S 1005-Y20R



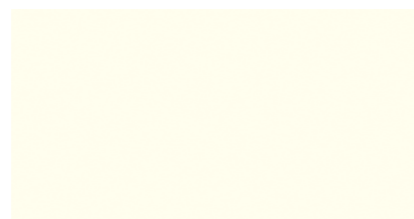
**UNI**  
white grey LRV 70.27%  
NCS S 1002-Y50R



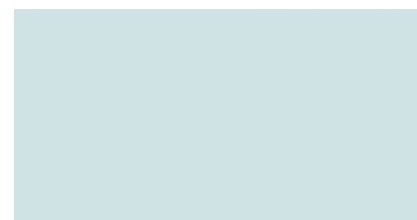
**PALM**  
kaki LRV 66.69%  
NCS Background: S 0502-G50Y  
NCS Pattern: S 2010-G40Y



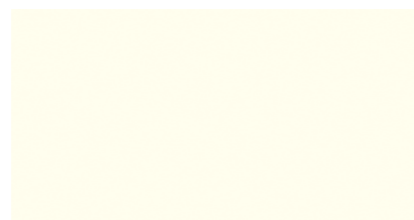
**UNI**  
kaki LRV 37.91%  
NCS S 3010-G40Y



**UNI**  
super white LRV 87.26%  
NCS S 0500-N



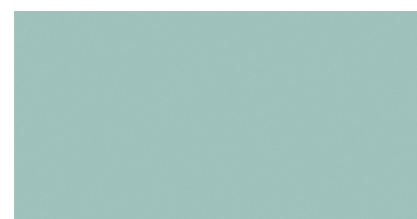
**UNI**  
white blue LRV 57.32%  
NCS S 1510-B



**UNI**  
super white CR LRV 88.22%  
NCS S 0502-G50Y



**PALM**  
shadow LRV 78.74%  
NCS Background: S 0502-G50Y  
NCS Pattern: S 2002-Y20R



**UNI**  
aqua LRV 34.76%  
NCS S 3010-B50G

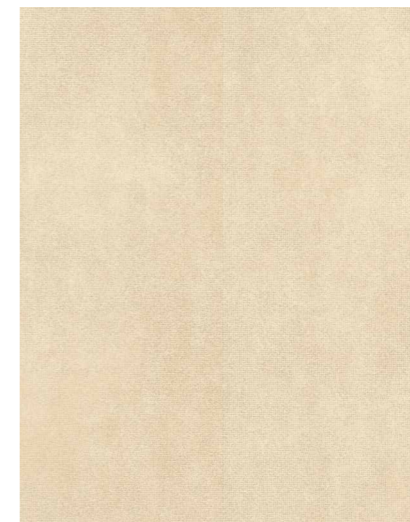


**UNI**  
sweet grey CR LRV 50.96%  
NCS S 2502-Y20R

# ProtectWALL collection



**PLYWOOD**  
natural LRV 48.94%  
NCS Background: S 2010-Y20R  
NCS Pattern: S 3010-Y30R



**RUSTIC VELVET**  
copper LRV 57.94%  
NCS S 1505-Y



**TWEED**  
ochre LRV 59.92%  
NCS S 1510-Y20R



**OAK TREE**  
natural LRV 39.53%  
NCS S 3010-Y30R



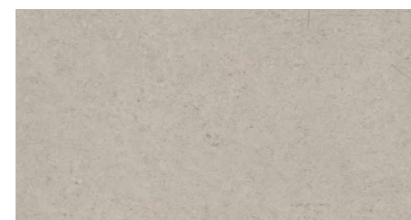
**LUXURY CONCRETE**  
golden LRV 40.90%  
NCS S 3005-Y



**TWEED**  
warm grey LRV 61.50%  
NCS S 1520-Y20R



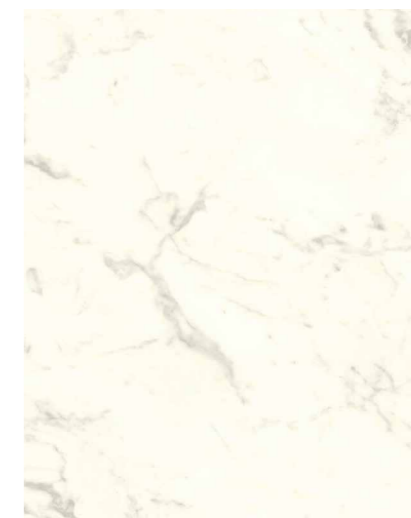
**TISSE**  
grey beige LRV 51.93%  
NCS S 2005-Y20R



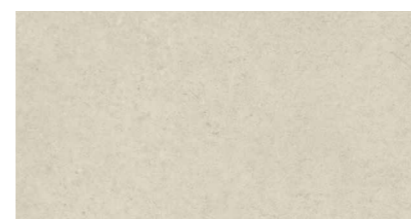
**CONCRETE**  
cool grey LRV 35.34%  
NCS S 3502-Y50R



**BRECCIASTONE**  
grey LRV 38.24%  
NCS S 3502-Y20R



**MARBLE**  
carrare LRV 82.72%  
NCS S 0502-G50Y



**CONCRETE**  
mastic LRV 54.30%  
NCS S 2002-Y

Excellence collection				Accent Excellence Compact+ Tapiflex Excellence Acoustic 19 dB (to be glued)		Matching welding rods	
Design	Colour	NCS	LRV (%)	Accent (Compact+) A	Tapiflex (Acoustic 19 dB) T19	Unicolour	Multicolour
CARPET	brick	S 5010-Y50R	25.7	206012 018	206017 018	1287806	-
	dark grey	S 5502-Y80R	19.9	206012 019	206017 019	1287533	-
	intense jean	S 5005-R80B	17.8	206012 001	206017 001	1287528	-
	moss	S 6005-G50Y	18.6	206012 020	206017 020	1287294	-
	ochre	S 4010-Y10R	25.7	206012 021	206017 021	1287373	-
	white grey	S 2502-Y	41.3	206012 002	206017 002	1287716	-
CHATILLON OAK	beige	S 3010-Y30R	30.2	206012 077	206017 077	1287005	1290137
	golden	S 4020-Y40R	23.6	206012 078	206017 078	1294428	1290301
	grey	S 5005-Y50R	23.0	206012 079	206017 079	1287604	1290194
	light brown	S 3010-Y30R	38.5	206012 080	206017 080	1294852	1290368
	natural	S 4020-Y30R	27.3	206012 081	206017 081	1287153	1290303
	white	S 2005-Y40R	45.3	206012 082	206017 082	1287764	1290159
CONCRETE	blue	S 4000-N	26.7	206012 022	206017 022	1292767	-
	brick	S 4020-Y70R	24.7	206012 023	206017 023	1287955	-
	chalk	S 2502-Y50R	45.3	206012 003	206017 003	1287290	-
	cool grey	S 3502-Y80R	32.0	206012 004	206017 004	1287789	-
	dark grey	S 6502-Y80R	11.6	206012 005	206017 005	1287585	-
	deep blue	S 7005-B	10.8	206012 024	206017 024	1287077	-
	grey beige	S 4005-Y20R	32.4	206012 006	206017 006	1287713	-
	ochre	S 4020-Y10R	26.8	206012 025	206017 025	1287690	-
	warm grey	S 6005-Y20R	18.0	206012 008	206017 008	1287870	-
	black & white	S 7500-N	8.1	206012 009	206017 009	1287835	-
ESQUISSE	dark grey	S 6500-N	12.6	206012 010	206017 010	1287548	-
	light grey	S 4502-Y50R	30.0	206012 011	206017 011	1287854	-
	medium grey	S 5502-R	19.5	206012 026	206017 026	1287832	-
FRAGMENTO	deep black	S 6502-R50B	23.9	206012 034	206017 034	1287844	-
	deep brick	S 3020-Y80R	38.5	206012 035	206017 035	1291916	-
	deep green	S 4010-B30G	42.9	206012 036	206017 036	1292655	-
	deep turquoise	S 3010-R90B	35.8	206012 037	206017 037	1291210	-
	deep yellow	S 2030-Y10R	46.6	206012 038	206017 038	1287651	-
GOMMETTE	multico	S 1002-Y80R	62.2	206012 027	206017 027	1287946	-
GRANITO	warm grey	S 3502-Y50R	36.0	206012 028	206017 028	1287530	-
MATRIX*	dark grey	S 5502-B	17.5	206012 031	206017 031	1287631	-
	light grey	S 2502-R	45.5	206012 032	206017 032	1287523	-
OAK LONGSTRIPE	classical	S 4020-Y30R	23.9	206012 090	206017 090	1294428	1290103
OAK TREE	beige	S 3010-Y40R	40.7	206012 012	206017 012	1287432	1290294
	golden	S 4020-Y30R	30.9	206012 091	206017 091	1287690	1290303
OSB	natural	S 2010-Y20R	43.2	206012 033	206017 033	1287686	1290407
PLYWOOD	natural	S 3010-Y20R	39.4	206012 039	206017 039	1287391	1290143
QR CODE	soft aqua	S 2000-N	53.4	206012 040	206017 040	1287875	-
	soft brick	S 1505-Y70R	63.0	206012 041	206017 041	1291961	-
	soft grey	S 2502-R50B	54.0	206012 042	206017 042	1294680	-
	soft sky blue	S 1515-R80B	52.0	206012 043	206017 043	1287902	-
	soft yellow	S 1515-Y20R	58.8	206012 044	206017 044	1287771	-
QUADRILLAGE	black & white	S 2002-R50B / S6502-R50B	58.5	206012 045	206017 045	1292459	-
SCANDINAVIAN OAK	beige	S 3010-Y30R	37.4	206012 083	206017 083	1287432	-
	dark grey	S 5502-Y50R	28.7	206012 013	206017 013	1287828	1290294
	light beige	S 3005-Y20R	41.2	206012 014	206017 014	1287637	1290377

Excellence collection				Accent Excellence Compact+ Tapiflex Excellence Acoustic 19 dB (to be glued)		Matching welding rods	
Design	Colour	NCS	LRV (%)	Accent (Compact+) A	Tapiflex (Acoustic 19 dB) T19	Unicolour	Multicolour
TAPPED METAL	brass	S 3020-Y20R	32.0	206012 046	206017 046	1287960	-
	copper	S 4020-Y40R	27.3	206012 047	206017 047	1287257	-
	grey	S 2502-Y50R	39.5	206012 015	206017 015	1287454	-
TERRAZZO	natural grey	S 2502-Y50R	45.5	206012 059	206017 059	1291214	-
TERRAZZO CONCRETE	beige	S 2005-Y50R	46.6	206012 048	206017 048	1287290	-
	black	S 6500-N	13.4	206012 049	206017 049	1287392	-
	grey	S 2502-Y50R	39.5	206012 050	206017 050	1291215	-
TERRAZZO GRANDE	blue	S 4005-G50Y / S 1502-Y50R	59.7	206012 052	206017 052	1287838	-
	brick	S 4010-Y70R / S 1502-Y50R	57.3	206012 051	206017 051	1287838	-
	green	S 4005-R80B / S 1502-Y50R	59.5	206012 053	206017 053	1287838	-
	grey	S 5502-Y80R / S 1502-Y50R	60.2	206012 054	206017 054	1287838	-
TERRAZZO MURANO	ochre	S 4010-Y30R / S 1502-Y50R	58.0	206012 055	206017 055	1287838	-
	gold & silver	S 2502-Y50R	43.2	206012 056	206017 056	1287290	-
	petrol	S 2502-Y50R	43.1	206012 057	206017 057	1287290	-
TISSAGE*	terracotta	S 2502-Y50R	43.1	206012 058	206017 058	1287290	-
	soft aqua	S 3005-B	43.0	206012 060	206017 060	1292155	-
	soft beige	S 3010-Y20R	43.0	206012 016	206017 016	1287078	-
UNI	soft Greige	S 3005-Y20R	37.4	206012 017	206017 017	1287572	-
	soft grey	S 4000-N	30.7	206012 061	206017 061	1287831	-
	soft kaki	S 2502-Y	42.1	206012 062	206017 062	1291214	-
	black	S 8000-N	4.9	206012 063	206017 063	1292206	-
VARIANT OAK	dark beige	S 4005-Y20R	28.9	206012 064	206017 064	1287830	-
	dark grey	S 6005-R80B	14.0	206012 065	206017 065	1287077	-
	deep blue	S 6010-R70B	11.9	206012 066	206017 066	1287956	-
	deep green	S 6010-B50G	12.4	206012 067	206017 067	1287957	-
	deep red	S 3040-Y90R	16.6	206012 068	206017 068	1288359	-
	deep yellow	S 2030-Y20R	38.5	206012 069	206017 069	1287884	-
	intense aqua	S 3005-B20G	36.0	206012 070	206017 070	1292655	-
	intense brick	S 4020-Y80R	19.2	206012 071	206017 071	1287959	-
	intense kaki	S 5005-G50Y	24.7	206012 072	206017 072	1287958	-
	medium grey	S 3502-R50B	38.0	206012 073	206017 073	1292388	-
	warm grey	S 5502-R50B	19.0	206012 074	206017 074	1287394	-
	white	S 1002-Y50R	66.3	206012 075	206017 075	1288126	-
	WOOD CHEVRON	beige	S 3010-Y40R	33.1	206012 084	206017 084	1287437
brown grey		S 6005-Y50R	13.5	206012 085	206017 085	1287546	1290309
golden		S 4020-Y30R	24.4	206012 086	206017 086	1292373	1290187
natural		S 4020-Y30R	27.8	206012 088	206017 088	1292373	1290303
nut		S 5010-Y30R	20.4	206012 087	206017 087	1294428	1290311
XXL BRECCIACINO	warm brown	S 6010-Y50R	14.9	206012 089	206017 089	1287780	1290216
	beige	S 4020-Y30R	28.4	206012 076	206017 076	1287153	1290303
XXL BRECCIASTONE	nude	-	-	206046 097	206047 097	-	-
XXL CARRARA GRANDE	grey	-	-	206046 095	206047 095	-	-
XXL OAK	natural	-	-	206046 096	206047 096	-	-
	golden	-	-	206046 094	206047 094	-	-
	natural	-	-	206046 093	206047 093	-	-



## ProtectWALLcollection

Design	Colour	NCS	LRV (%)	ProtectWALL	ProtectWALL CleanRoom	Matching welding rods
BRECCIASTONE	grey	S 3502-Y20R	38.24	264993 106	—	24806 200
CONCRETE	cool grey	S 3502-Y50R	35.34	264991 058	—	24806 117
	mastic	S 2002-Y	54.30	264991 074	—	24806 201
GEMSTONE	pastel	Background: S 1002-Y50R Pattern 1: S 3030-R Pattern 2: S 3030-Y10R Pattern 3: S 4502-Y80R	71.62	264991 094	— — — —	24806 202
LUXURY CONCRETE	golden	S 3005-Y	40.90	264991 096	—	24806 203
MARBLE	carrare	S 0502-G50Y	82.72	264991 064	—	24806 124
OAK TREE	natural	S 3010-Y30R	39.53	264991 075	—	24806 204
PALM	kaki	Background: S 0502-G50, Pattern: S 2010-G40Y	66.69	264991 095	—	24806 205
	shadow	Background: S 0502-G50Y, Pattern: S 2002-Y20R	78.74	264991 091	—	24806 206
PLYWOOD	natural	Background: S 2010-Y20R, Pattern: S 3010-Y30R	48.94	264993 104	—	24806 207
RUSTIC VELVET	copper	S 1505-Y	57.94	264991 097	—	24806 208
TISSE	grey beige	S 2005-Y20R	51.93	264991 057	—	24806 127
TWEED	ochre	S 1510-Y20R	59.92	264991 087	—	24806 210
	warm grey	S 1520-Y20R	61.50	264991 088	—	24806 209
UNI	aqua	S 3010-B50G	34.76	264991 083	—	24806 211
	greige	S 3005-Y20R	40.75	264991 098	—	24806 212
	kaki	S 3010-G40Y	37.91	264991 084	—	24806 213
	light beige	S 1005-Y20R	69.91	264991 080	—	24806 147
	linen	S 2005-Y	57.94	264991 100	—	24806 214
	ochre	S 2020-Y20R	51.06	264991 085	—	24806 215
	super white	S 0500-N	87.26	264991 077	—	24806 161
	super white	S 0502-G50Y	88.22	—	264992 061	24806 161
	sweet grey	S 2502-Y20R	50.96	—	264992 082	24806 216
	terracotta	S 3020-Y60R	31.11	264991 101	—	24806 217
	white blue	S 1510-B	57.32	264991 081	—	24806 156
	white grey	S 1002-Y50R	70.27	264991 079	—	24806 162

# Acczent Excellence Compact+

## Datasheet

Classification	Norm	Tarkett Value
Product type	ISO 10582	Polyvinyl chloride floor coverings with foam layer
Commercial classification	ISO 10874	34 Very Heavy
Industrial classification	ISO 10874	43 Heavy
Binder content	ISO 10582	Type I
Technical Characteristics	Norm	Tarkett Value
Wear layer thickness	EN ISO 24340	0,80 mm
Total thickness	EN ISO 24346	2,15 mm
Total weight	EN ISO 23997	2750 g/m <sup>2</sup>
Surface treatment		TEKTANIUM®
Installation method		Glue-Down
Performance for CE Marking	Norm	Tarkett Value
Declaration of Performance #	EN 14041	0120-103-DoP-2023-06
Reaction to fire	S/ISO 9239.1	Critical radiant flux 7.0kW/m <sup>2</sup> Smoke 236%.min
Static Electrical Propensity	EN 1815	Antistatic (≤ 2 kV)
Thermal resistance	EN ISO 10456	0,04 m <sup>2</sup> ·K/W
Slip resistance	EN 13893	Class DS (μ ≥ 0,30)
Technical Performance	Norm	Tarkett Value
Residual indentation	EN ISO 24343-1	Required value: ≤ 0,20 mm Average measured value: 0,03 mm
Dimensional stability	EN ISO 23999	≤ 0.40 % Average measured value : ≤ 0.10 %
Impact sound reduction - ΔLw	EN ISO 717/2	8 dB
Reduction of in-room impact noise	NF S31-074	Class B (≤ 75 dB)
Slip resistance	DIN 51130 AS 4586	R10 P4
Castor chair	EN ISO 4918	No damage
Curl resultant to heat	EN ISO 23999	≤  8  mm
Light fastness	EN ISO 105-B02	≥ 6
Chemical resistance	EN ISO 26987	Not affected
Underfloor heating		Suitable (subfloor temperature maximum 27°C)
Sustainability Performances	Norm	Tarkett Value
Recyclability through ReStart®		Recyclable
Recycled content		27 %
Total VOC Emissions (after 28 days)	EN 16516	Platinum (≤ 10 μg/m <sup>3</sup> )
Formaldehyde emission	EN 717-1	E1
GreenTag		Level A
HealthRATE		Platinum
Green Building Council of Australia Best Environmental Practice PVC		TAR:FW01:2023:BP
Dimensions and Designs		
Roll		Roll 2 x 23 m
Number of designs available		93



The above information is subject to modification for the benefit of further improvement (18/04/2024). According to the European Regulation N°305/2011 for CE Marking, the Declarations of Performance are available on our website <https://www.tarkett.com.au>. Tarkett's instructions regarding installation, cleaning and maintenance should be observed. Please contact Tarkett at the address shown for the instructions.

# Tapiflex Excellence (19dB)

## Datasheet

Classification	Norm	Tarkett Value
Product type	EN 651	Polyvinyl chloride floor coverings with foam layer
Commercial classification	ISO 10874	34 Very Heavy
Industrial classification	ISO 10874	42 General
Technical Characteristics	Norm	Tarkett Value
Total thickness	ISO 24346	3,25 mm
Wear layer thickness	ISO 24340	0,80 mm
Total weight	ISO 23997	3250 g/m <sup>2</sup>
Surface treatment		TEKTANIUM®
Installation method		Glue-Down
Performance for CE Marking	Norm	Tarkett Value
Declaration of Performance #	EN 14041	0120-074-DoP-2024-01
Reaction to fire	AS/ISO 9239.1	Critical radiant flux 7.2kW/m <sup>2</sup> Smoke 258%.min
Static Electrical Propensity	EN 1815	Antistatic (≤ 2 kV)
Thermal resistance	EN ISO 10456	0,04 m <sup>2</sup> ·K/W
Slip resistance	EN 13893	Class DS (μ ≥ 0,30)
Technical Performance	Norm	Tarkett Value
Residual indentation	EN ISO 24343-1	Required value: ≤ 0,20 mm Average measured value: ca. 0,10 mm
Dimensional stability	EN ISO 23999	≤ 0.40 % Average measured value : ≤ 0.10 %
Impact sound reduction - ΔLw	EN ISO 717/2	19 dB
Reduction of in-room impact noise	NF S31-074	Class A (≤ 65 dB)
Slip resistance	DIN 51130 AS 4586	R10 P4
Furniture leg	EN ISO 16581	No damage
Castor chair	EN ISO 4918	No damage
Curl resultant to heat	EN ISO 23999	≤  8  mm
Light fastness	EN ISO 105-B02	≥ 6
Chemical resistance	EN ISO 26987	Not affected
Underfloor heating		Suitable (subfloor temperature maximum 27°C)
Sustainability performances	Norm	Tarkett Value
Recyclability through ReStart®		Recyclable
Recycled content		25 %
Carbon Footprint (Cradle-to-Gate, EPD Modules A1-A3)		9,30 kg CO <sub>2</sub> eq /m <sup>2</sup>
Total VOC Emissions (after 28 days)	EN 16516	Platinum (≤ 10 μg/m <sup>3</sup> )
GreenTag		Level A
HealthRATE		Platinum
Green Building Council of Australia Best Environmental Practice PVC		TAR:FW01:2023:BP
Dimensions and designs		
Roll		Roll 2 x 23 m
Number of designs available		93



The above information is subject to modification for the benefit of further improvement (18/04/2024). According to the European Regulation N°305/2011 for CE Marking, the Declarations of Performance are available on our website <https://www.tarkett.com.au>. Tarkett's instructions regarding installation, cleaning and maintenance should be observed. Please contact Tarkett at the address shown for the instructions.

# ProtectWALL (1.5 mm)

## Datasheet

Classification	Norm	ProtectWALL 1.5
Product type	EN 259-1	Heavy Duty Wall Covering
Technical Characteristics	Norm	ProtectWALL 1.5
Total thickness	EN ISO 24346	1,50 mm
Total weight	EN ISO 23997	2400 g/m <sup>2</sup>
Wear layer thickness	EN ISO 24340	0,15 mm
Surface treatment		Top Clean XP
Installation method		Glue-Down
Performance for CE Marking	Norm	ProtectWALL 1.5
Declaration of Performance #	EN 15102	0132-0065-DoP-2022-01
Reaction to fire	AS/NZ 3837	Group 1
	Average specific extinction area	131.1m <sup>2</sup> /kg
Technical Performance	Norm	ProtectWALL 1.5
Colour fastness to light	ISO 105-B02	≥ 6
Impact Resistance	EN 259-2	Resistant to impacts - No visible burst nor crack
Chemical resistance	ISO 26987	Not affected
Spongeability, washability, lyability, brushability	EN 12956	Super washable and brushable
Determination of Flexibility	ISO 24344 - EN 435	No damage, no crack
Seam Strength Average Value	EN 684	≥ 250 N/50mm
Bacteria Resistance	ISO 846 part A and C	Does not promote growth
Sustainability performances	Norm	ProtectWALL 1.5
Recyclability through ReStart®		Recyclable
Total VOC Emissions	EN 16516	Platinum (≤ 10 µg/m <sup>3</sup> )
GreenTag		Level A
HealthRATE		Platinum
Dimensions and designs	Norm	ProtectWALL 1.5
Roll		Roll 2 x 20 m
Number of designs available		24



The above information is subject to modification for the benefit of further improvement (29/07/2024). According to the European Regulation N°305/2011 for CE Marking, the Declarations of Performance are available on our website <https://www.tarkett.com.au>. Tarkett's instructions regarding installation, cleaning and maintenance should be observed. Please contact Tarkett at the address shown for the instructions.



# ProtectWALL (CR)

## Datasheet

Classification	Norm	ProtectWALL CR
Product type	EN 259-1	Heavy Duty Wall Covering
Technical Characteristics	Norm	ProtectWALL CR
Total thickness	EN ISO 24346	1,50 mm
Total weight	EN ISO 23997	2400 g/m <sup>2</sup>
Wear layer thickness	EN ISO 24340	0,15 mm
Surface treatment		Top Clean XP
Installation method		Glue-Down
Performance for CE Marking	Norm	ProtectWALL CR
Declaration of Performance #	EN 15102	0132-0065-DoP-2022-01
Reaction to fire	AS/NZ 3837	Group 1
	Average specific extinction area	131.1m <sup>2</sup> /kg
Technical Performance	Norm	ProtectWALL CR
Colour fastness to light	ISO 105-B02	≥ 6
Impact Resistance	EN 259-2	Resistant to impacts - No visible burst nor crack
Chemical resistance	ISO 26987	Not affected
Spongeability, washability, lyability, brushability	EN 12956	Super washable and brushable
Determination of Flexibility	ISO 24344 - EN 435	No damage, no crack
Seam Strength Average Value	EN 684	≥ 250 N/50mm
Bacteria Resistance	ISO 846 part A and C	Does not promote growth
Clean Room	ISO 14644-1	ISO Class 5
Sustainability performances	Norm	ProtectWALL CR
Recyclability through ReStart®		Recyclable
Total VOC Emissions	EN 16516	Platinum (≤ 10 µg/m <sup>3</sup> )
GreenTag		Level A
HealthRATE		Platinum
Dimensions and designs	Norm	ProtectWALL CR
Roll		Roll 2 x 20 m
Number of designs available		2



The above information is subject to modification for the benefit of further improvement (29/7/2024). According to the European Regulation N°305/2011 for CE Marking, the Declarations of Performance are available on our website <https://www.tarkett.com.au>. Tarkett's instructions regarding installation, cleaning and maintenance should be observed. Please contact Tarkett at the address shown for the instructions.



The designs and photos used in this brochure are for illustration purposes only. They are not contractual images and do not stand for product recommendation.  
Design & Photo: Studio 5-5 Designers

Tarkett Australia  
Suite 1, Level 3, Columbia Court, Baulkham Hills NSW 2153  
(02) 8853  
customerservice@tarkett.com  
www.tarkett.com.au



07/2024 - 2600030044