



APPLICATIONS



WALL HUNG
TOILET



HAND
BASIN



SHOWER



WMTS 106:2019
Certificate No. 23048
Manufacturer: SFA
Brand: Saniflo

PRODUCT REFERENCE:
SA99

Sanipack® Pro Up

Designed for discreet wall hung toilet installations, the Sanipack® Pro UP pumps waste from a toilet, basin and shower and has slim dimensions enabling possible concealment.



TECHNICAL CHARACTERISTICS

Discharge Pipework	20 mm
Motor Power	400 Watts
Voltages	220-240 V/50 Hz
Working Waste Water Temp	35°C
Product Weight	7 kg
Overall Measurements	472 x 303 x 169 mm
Inlet Pipework	40 mm
IP Rating	IP44

WHY CHOOSE THIS PRODUCT?

Perfect for wall hung toilet suite

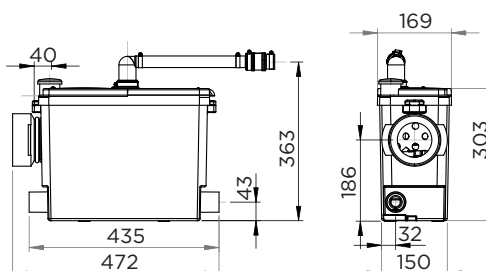
Ideal solution for a complete en-suite

Quiet technology

Slim dimensions

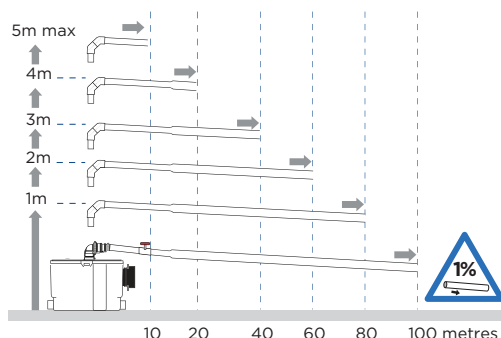
Access panels for ease of servicing

Macerator needs minimum 4.5 L of unrestricted flush for optimal function



VERTICAL/HORIZONTAL PERFORMANCE

Increase size of horizontal run by one pipe size after 5m. All horizontal pipework requires a minimum of 1:100 fall.



FLOW RATE PERFORMANCE CHART

Discharge height (m)

