

# STAIRLIFTS

**ENHANCE YOUR HOME  
AND INDEPENDENCE WITH  
AN ELEGANT AND STYLISH  
STAIRLIFT FROM EASY  
LIVING HOME ELEVATORS  
AND REALISE THE FULL  
FREEDOM OF YOUR HOME.**

Easy Living Home Elevators is pleased to introduce its compact StairLift for both indoor and outdoor use, which has been designed to meet the needs of the most discerning user.

With its increased power and class leading control technology you can be assured of the smoothest and safest ride of any StairLift available today at a surprisingly competitive price.



*designed to impress*®

 **easy living**®  
home elevators

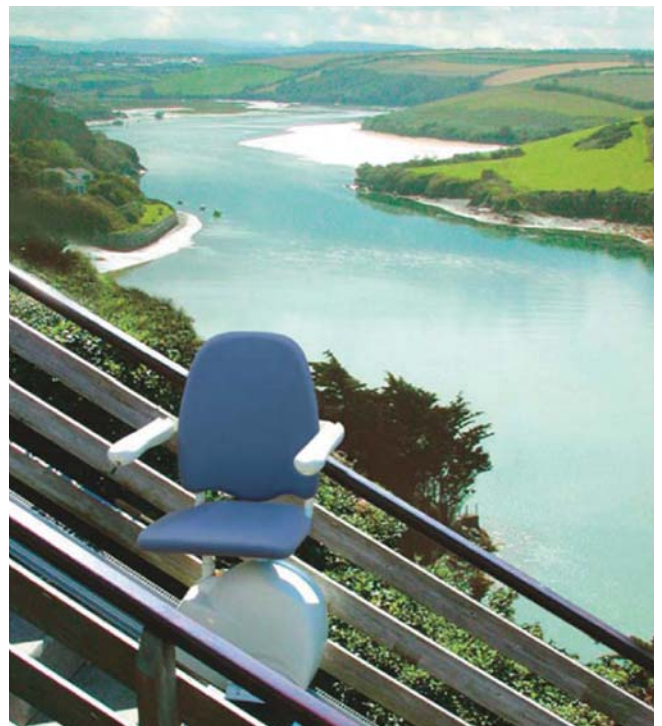


**easy living**<sup>®</sup>  
home elevators  
*designed to impress*<sup>®</sup>



### **EASY LIVING STAND AND PERCH**

If bending at the hips presents a problem, then the Easy Living Stand and Perch StairLift offers a perfect solution



### **EXTERNAL STAIRLIFTS**

An Easy Living MediTek StairLift is perfect for outdoor use.

## MANUAL OR POWERED FOLDING HINGE TRACK

Where the StairLift track may obstruct a door or passageway, it is possible to use a manual or powered folding hinge track. This simple solution allows the track to fold up automatically as you ascend the stairs, and then automatically fold down as you descend the stairs. For safety and easy cleaning, all the moving components are mounted neatly and unobtrusively inside the rail.



## MEDITEK'S SLIMMEST EVER STAIRLIFT

For compactness individual fold-up armrests, seats and footrest are offered as standard.



## LINKED FOOTREST OPTION

This simple solution allows the footrest and seat to be lifted together without bending down.



## DIAGNOSTIC DISPLAY PANEL

A time and money saving Self Diagnostic System is included as standard, which can identify and clearly display any fault which may occur, or report on its operating condition.



## AUTOMATIC OR MANUAL BRIDGING PLATFORM

If you have a few short steps in the bend at the head of your stairway, you have an option of fitting a Manual Bridging Platform or a Powered Bridging Platform. This worry free and unique design allows the platform to automatically move into the operational (down) position as you ascend the stairs and then automatically fold away as you descend the stairs.



Pressure Sensitive Footrest



Total Surface Protection Technology

## COLLISION DAMAGE PROTECTION

Many StairLifts today have little or no essential carriage protection should a collision occur. The Easy Living MediTek StairLift features total surface protection providing unprecedented levels of protection, safety and peace of mind. This technology continuously monitors the carriage and footrest leading surfaces so a controlled emergency stop can be activated should an obstruction be encountered.

## THE BEST GEARBOX WARRANTY

For strength, durability and long life the "Rock Solid" Cast Iron Gearbox is the best in its class. As this is the most critical, hard working and virtually only moving part at the heart of your StairLift, it comes with a Cast Iron Guarantee.

Most StairLifts today use 4, 6 or even 8 supporting rollers, but for long life and the ultimate smooth gentle and reassuring quiet ride the Easy Living Meditek StairLift uses 12.



### MANUAL SEAT SWIVEL

At the flick of a lever, the easy-to-use swivel chair can be manoeuvred into the 45° or 85° position and back again. This feature ensures safe and easy access to and from the StairLift from the top of the stairs.

### OPTIONAL POWERED SEAT SWIVEL

The optional powered swivel chair is the ultimate choice for comfort, at the touch of a switch the user is able to move into the parked or swivelled position with total ease.

### BATTERY OPERATION

The Easy Living MediTek StairLifts use safe, low voltage maintenance free battery power which ensures continued operation (on average up to 30 return journeys) in the event of a blackout.

### CONTINUOUS BATTERY CHARGING WITH NO TRAILING CABLES

The Easy Living StairLift's unique continuous charging system eliminates troublesome trailing cables or rail end charging stations and ensures the StairLift is charged regardless of where it is parked. This is essential for long battery life (similar to your car) and low operational costs.



### STAIRLIFT CONTROL

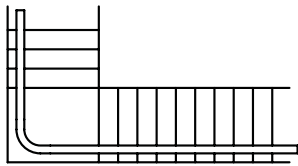
To control your StairLift either use the simple, user-friendly joystick on the arm of the StairLift, or...

...remotely, by means of an infra-red hand-held controller that requires no unsightly wall-mounted control boxes or cables.

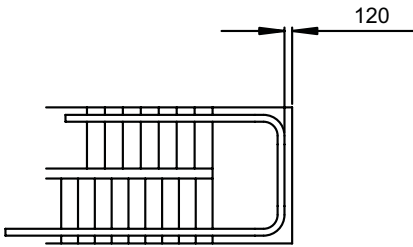


## EASY LIVING MULTI-FLIGHT STAIRIFT

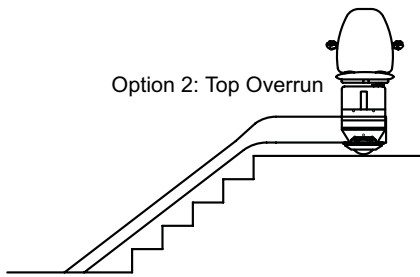
An Easy Living MediTek Multi-Flight Stairlift is designed for staircases with intermediate landings or top overruns.



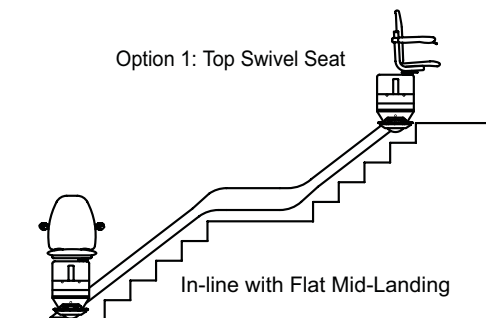
90° Flat Landing Turn



180° Flat Landing Turn



Straight Staircase with Top Overrun

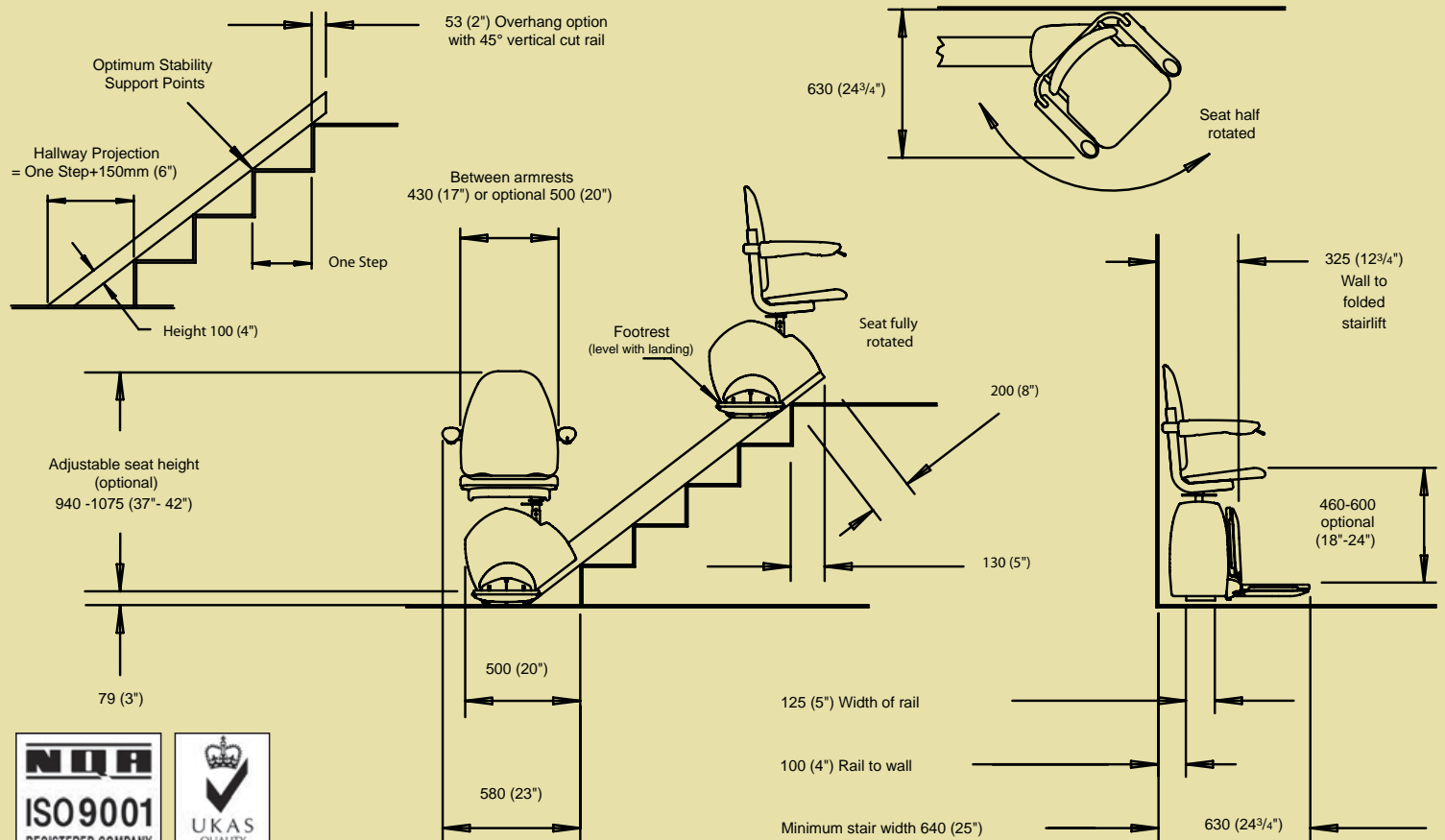




**easy living**<sup>®</sup>  
**home elevators**  
*designed to impress*<sup>®</sup>

## STRAIGHT STAIRLIFT DIMENSION GUIDE

Lifting capacities up to 160Kg 350 Lbs (25 Stone) available.



015

CERTIFICATE No. 17876

Designed to comply with BS5776 1996 **BSI** AS 1735-7.



### DISCLAIMER:

All illustrations, photography and specifications contained in this brochure are based on the latest product information available at the time of publication. Easy Living Home Elevators Pty Limited reserves the right to make changes at any time, without notice in colours, materials, equipment, specifications, models and warranty. Any variations in colours shown are due to reproduction variations of the printing process.

Trademarks include: "designed to impress", "installed to impress", "maintained to impress". (All pending)



Quality Endorsed Company  
 ISO 9001 Lic. QEC 20037  
 SAI Global

Contact Your Nearest Easy Living Home Elevators Showroom  
[sales@easy-living.com.au](mailto:sales@easy-living.com.au)

### NSW

64 Penshurst St  
 Willoughby NSW 2068  
 T. 02. 8116 1500  
 F. 02. 8116 1511

### VIC - TAS - SA

7 Hoddle St  
 Collingwood VIC 3066  
 T. 03. 9094 8600  
 F. 03. 9094 8611

### QLD

Unit 17  
 388 Newman Rd  
 Geebung QLD 4034  
 T. 07. 3216 2670  
 F. 07. 3170 0058

### WA

Home Ideas Centre  
 102 Railway Pde  
 City West, Perth 6005  
 T. 08. 9322 4688  
 F. 08. 9322 4655

[www.easy-living.com.au](http://www.easy-living.com.au)