



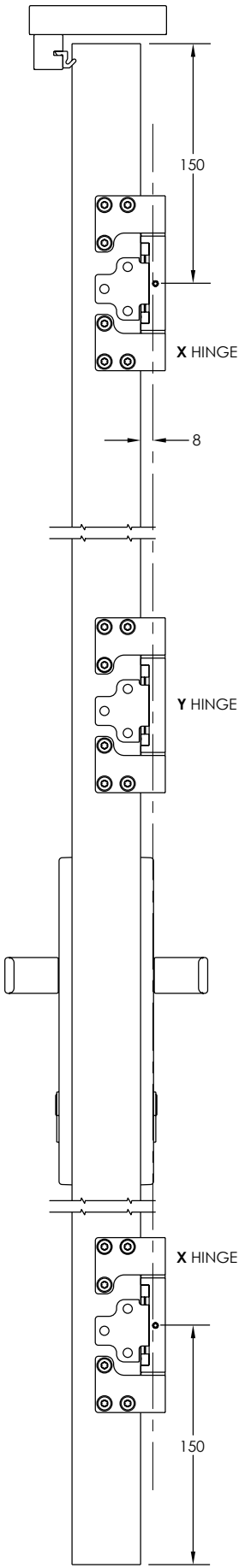
**Brio**<sup>®</sup>

## Brio XY Adjustable Hinge

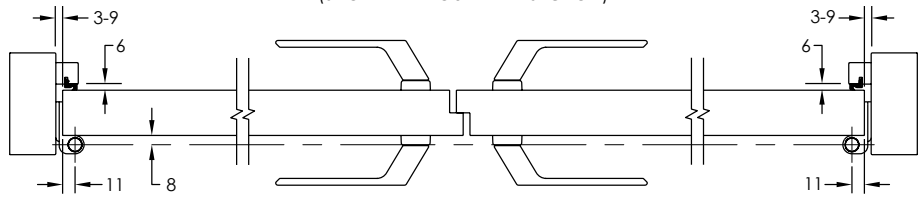
- Brio's adjustable hinge set, XY is designed for 100kg aluminium and timber panels, 1.2m wide
- Discreet, surface fix design allows quick and easy height adjustment without removing the door
- Finite 2D adjustment ensures panels retain perimeter seal for improved weather performance
- Available in PVD black and satin stainless steel or cast alloy in powder coat white and black

**[brio.com.au](http://brio.com.au)**

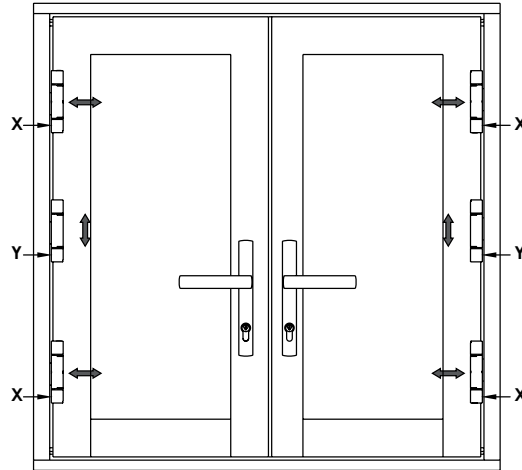
### FRENCH DOOR APPLICATION



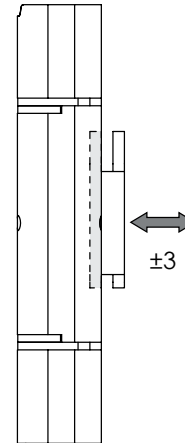
### FRENCH DOOR APPLICATION - CLOSED (SHOWN WITHOUT HEAD SECTION)



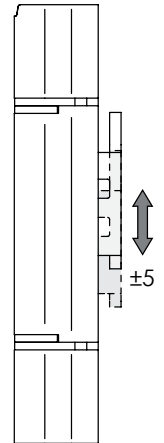
### FRENCH DOOR APPLICATION - CLOSED (TYPICAL OUTSIDE ELEVATION)



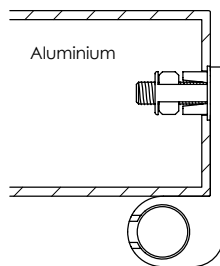
### X HINGE HORIZONTAL ADJUSTMENT



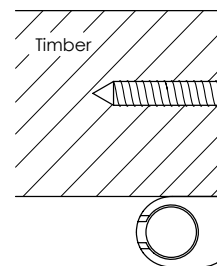
### Y HINGE VERTICAL ADJUSTMENT



### FIXINGS

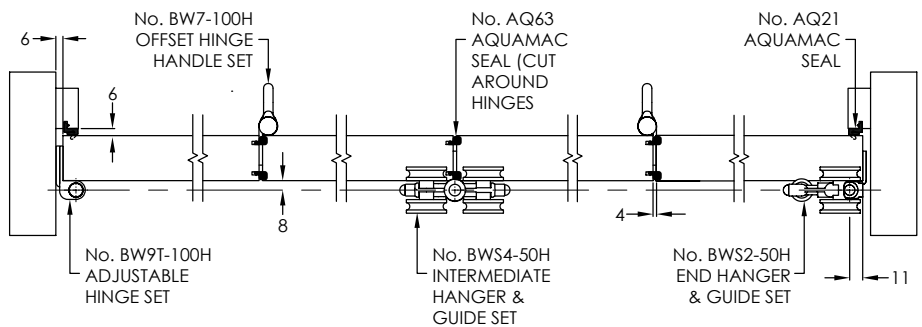


M5x20 Torx  
M5 Cage nut



12g Torx screw

### WEATHERFOLD 4+0 PANEL OUTWARD OPENING SYSTEM - CLOSED (SHOWN WITHOUT TRACK OR HEAD SECTION)



### WEATHERFOLD 4+0 PANEL OUTWARD OPENING SYSTEM - OPEN (SHOWN WITHOUT HEAD SECTION)

