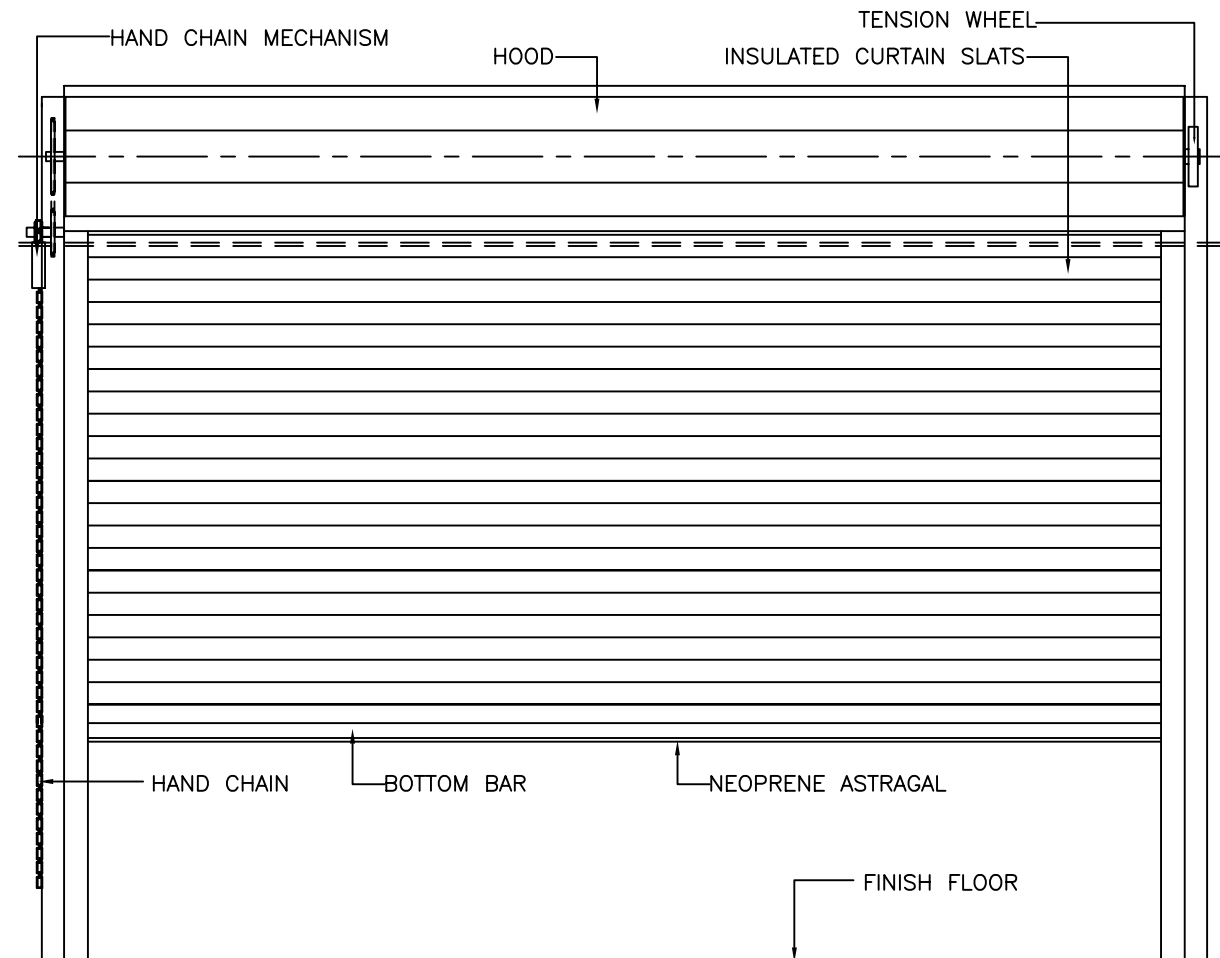




INSULATED SERVICE DOOR MODEL IS3000-HC

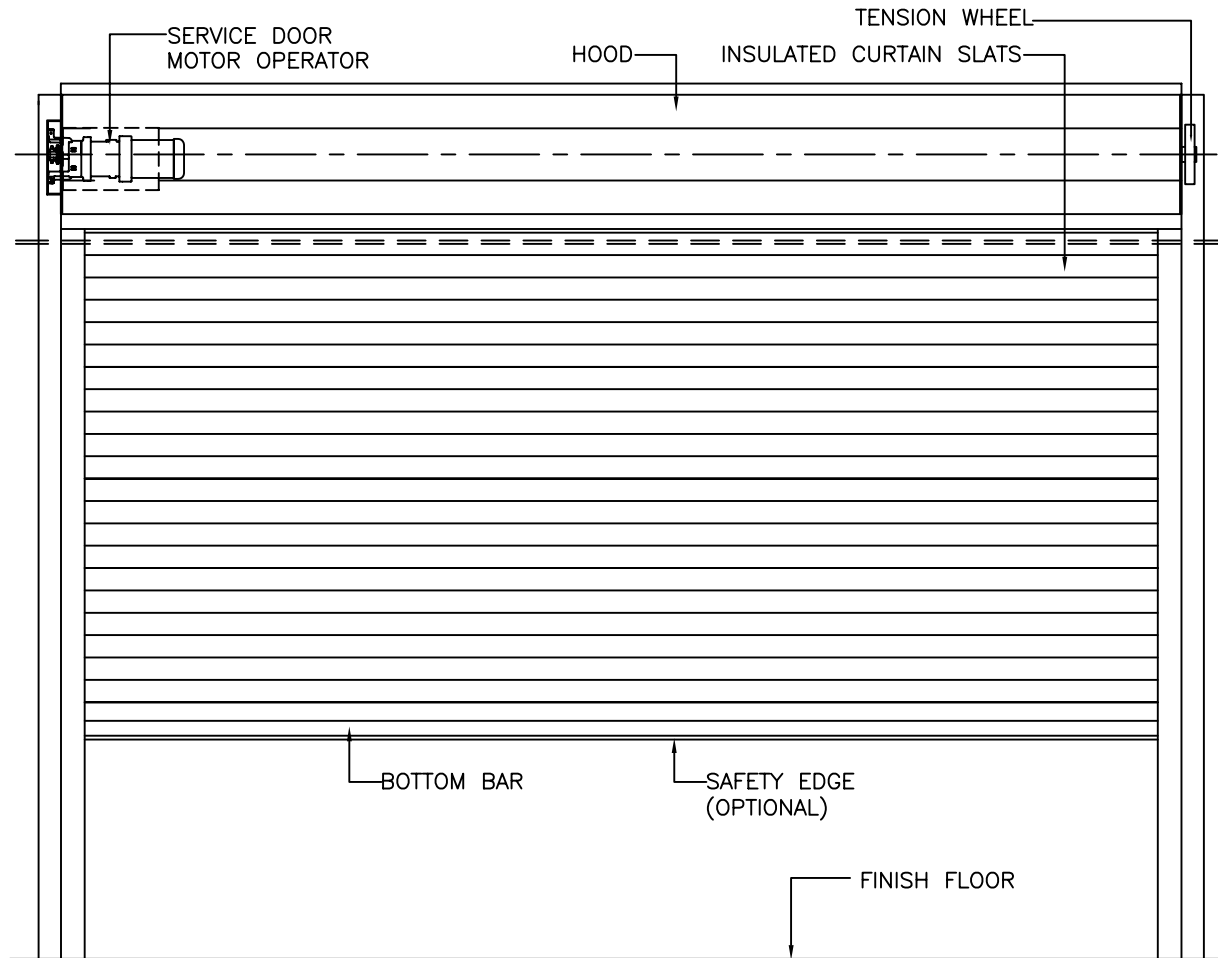
18-10021





INSULATED SERVICE DOOR MODEL IS3000-M

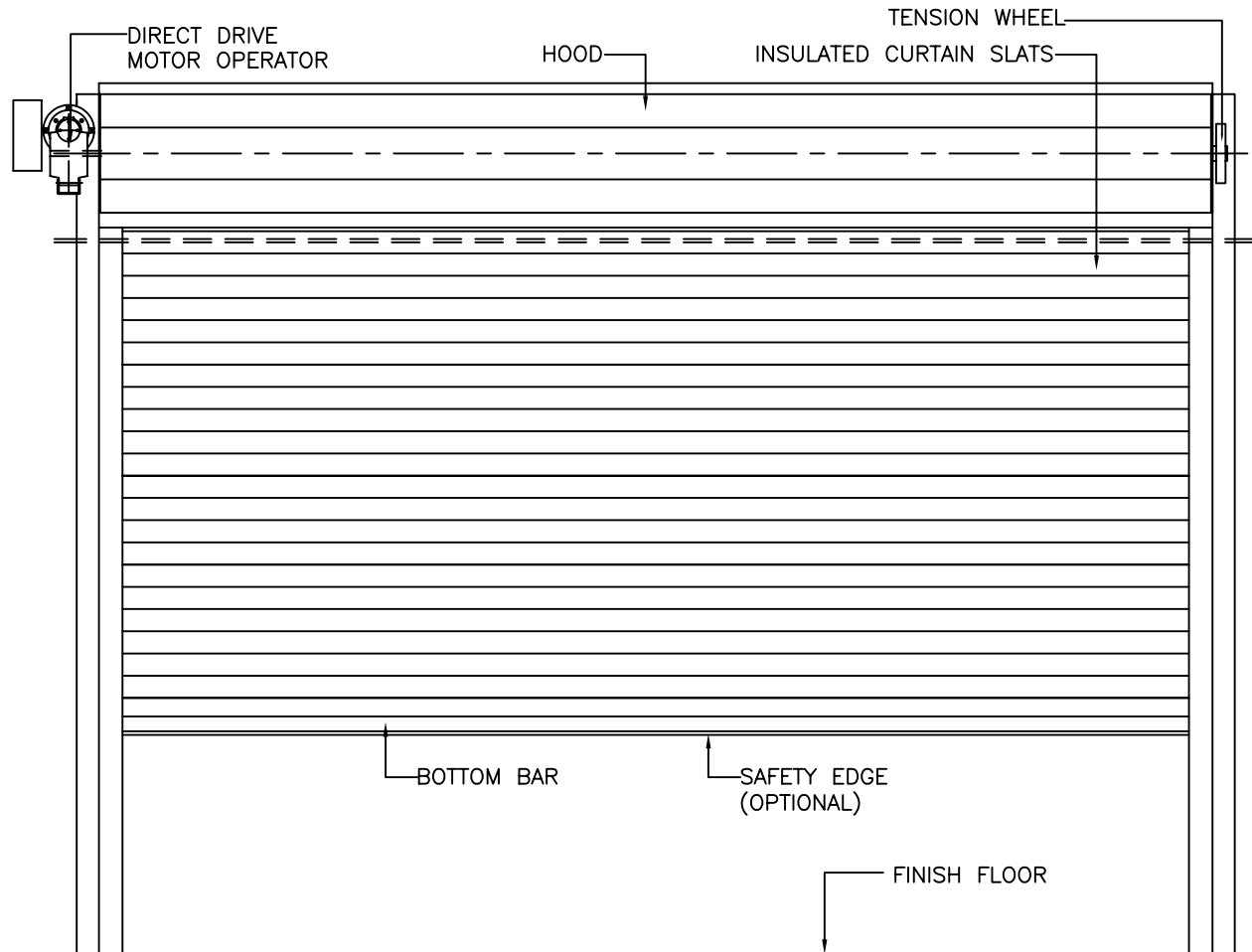
18-10001





INSULATED SERVICE DOOR MODEL IS3000-ADF

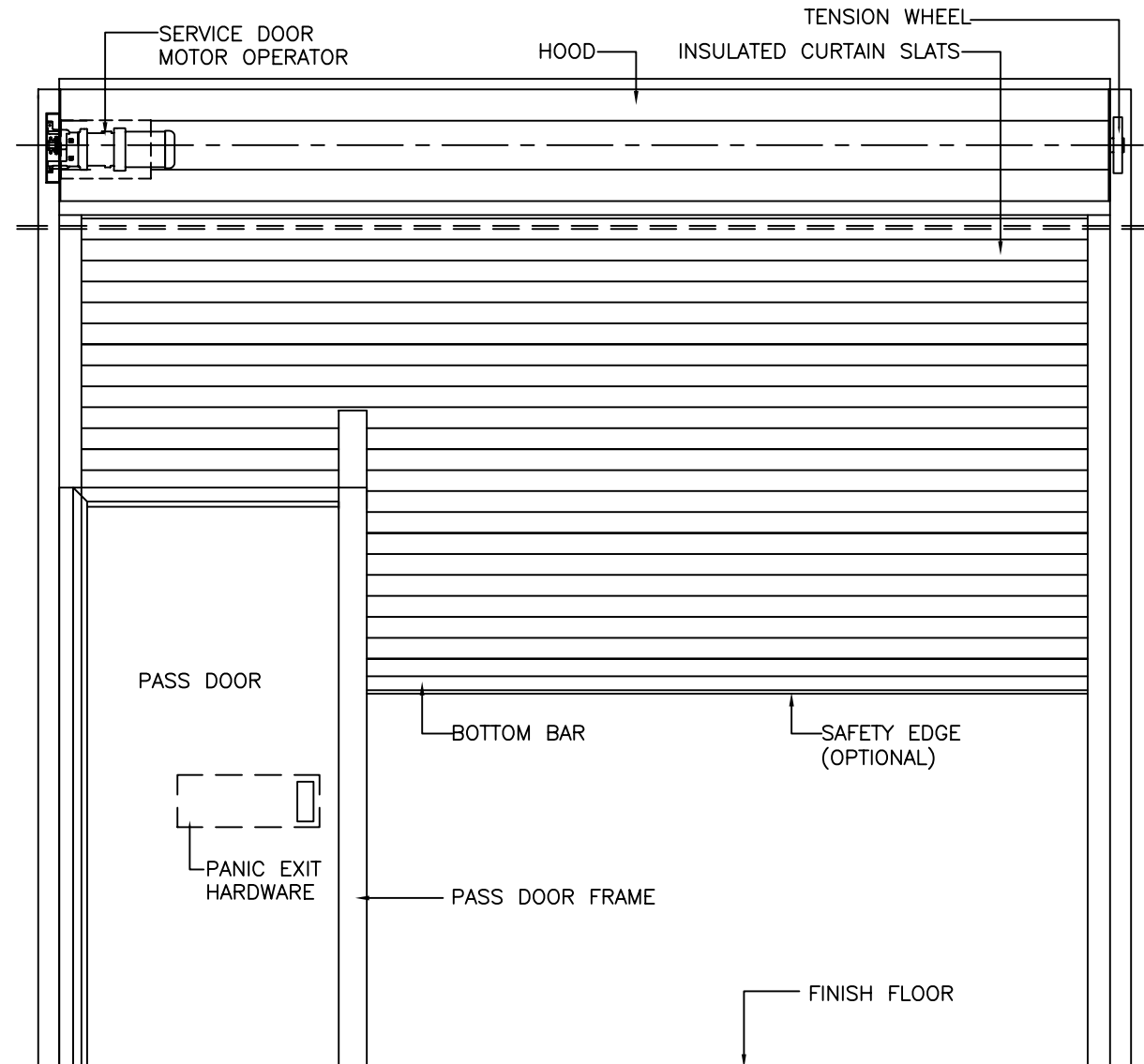
18-10011

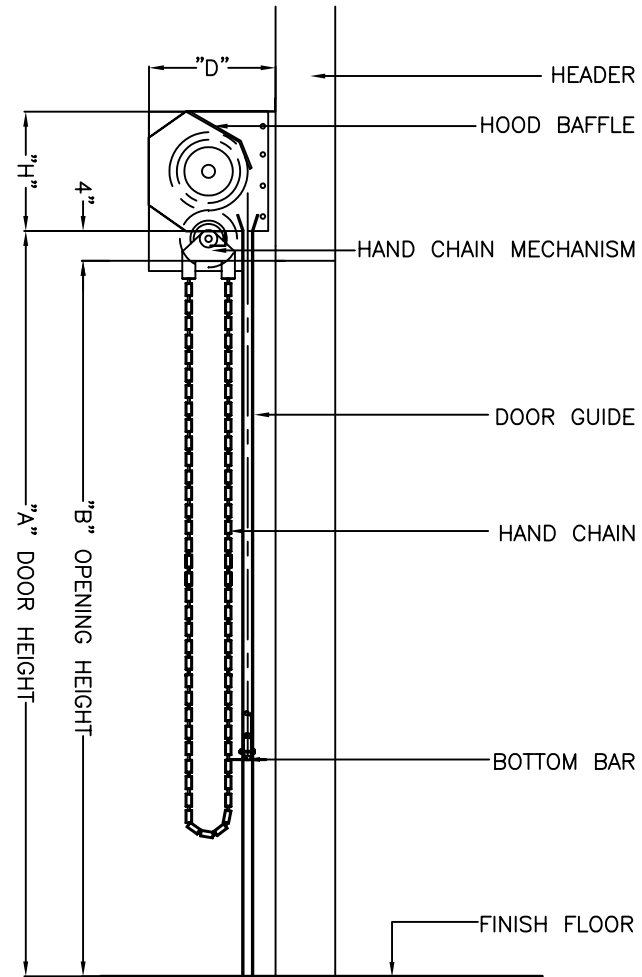




INSULATED SERVICE DOOR W/PASS DOOR MODEL IS3000-M-E

18-10031

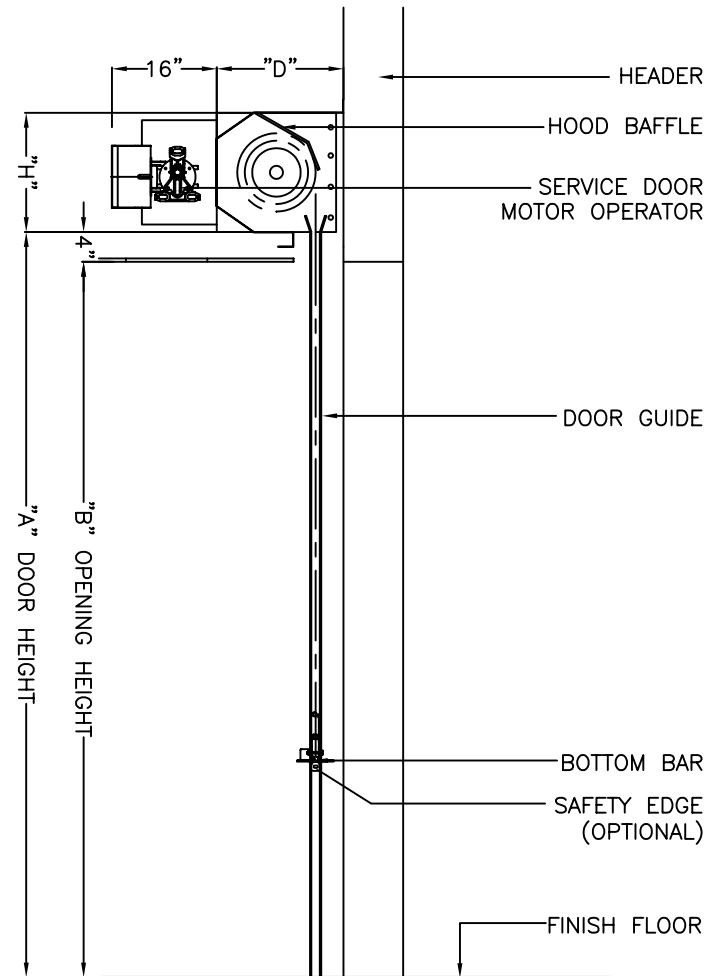






INSULATED SERVICE DOOR MODEL IS3000-M

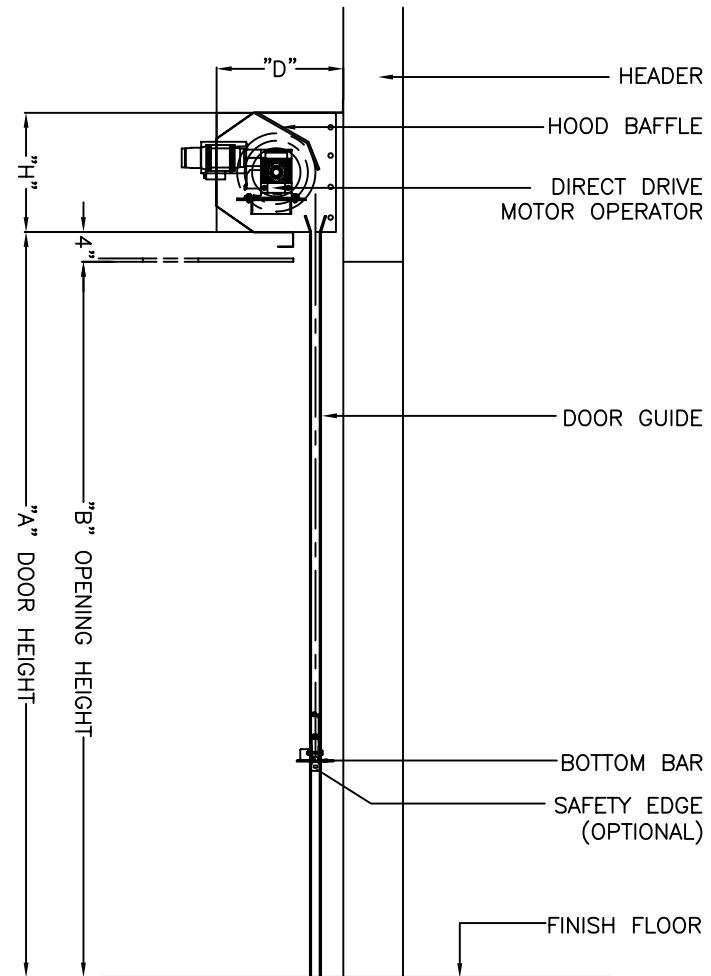
18-20001





INSULATED SERVICE DOOR MODEL IS3000-ADF

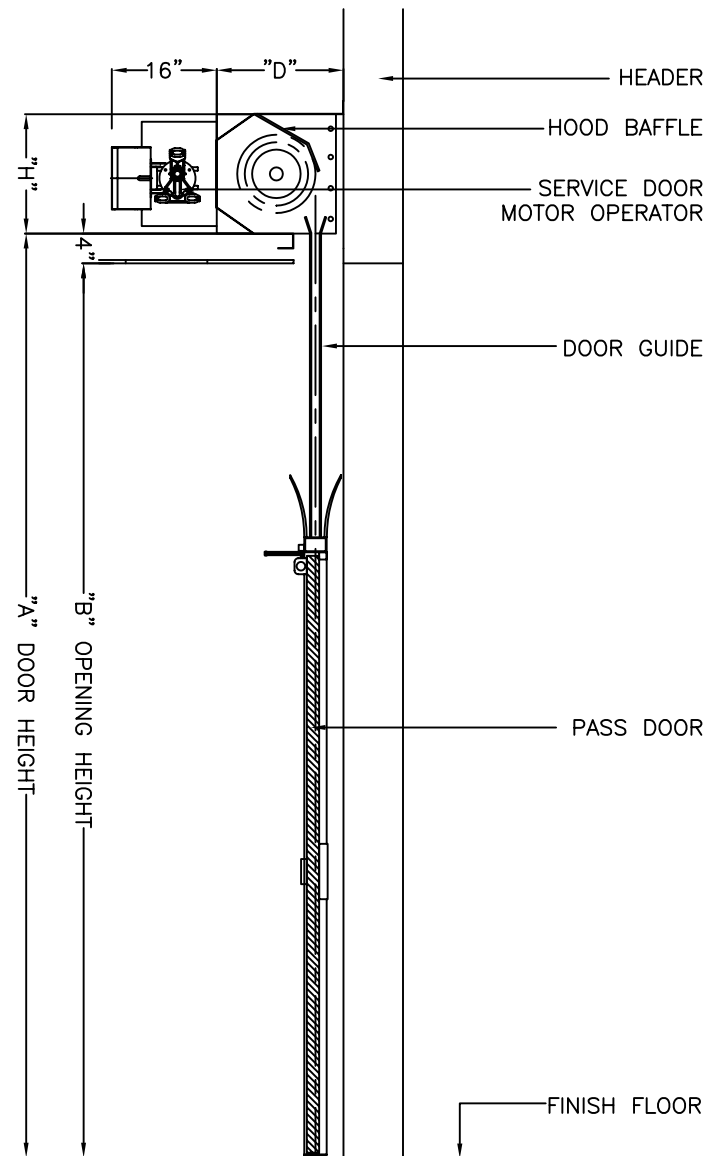
18-20011





INSULATED SERVICE W/PASS DOOR MODEL IS3000-M-E

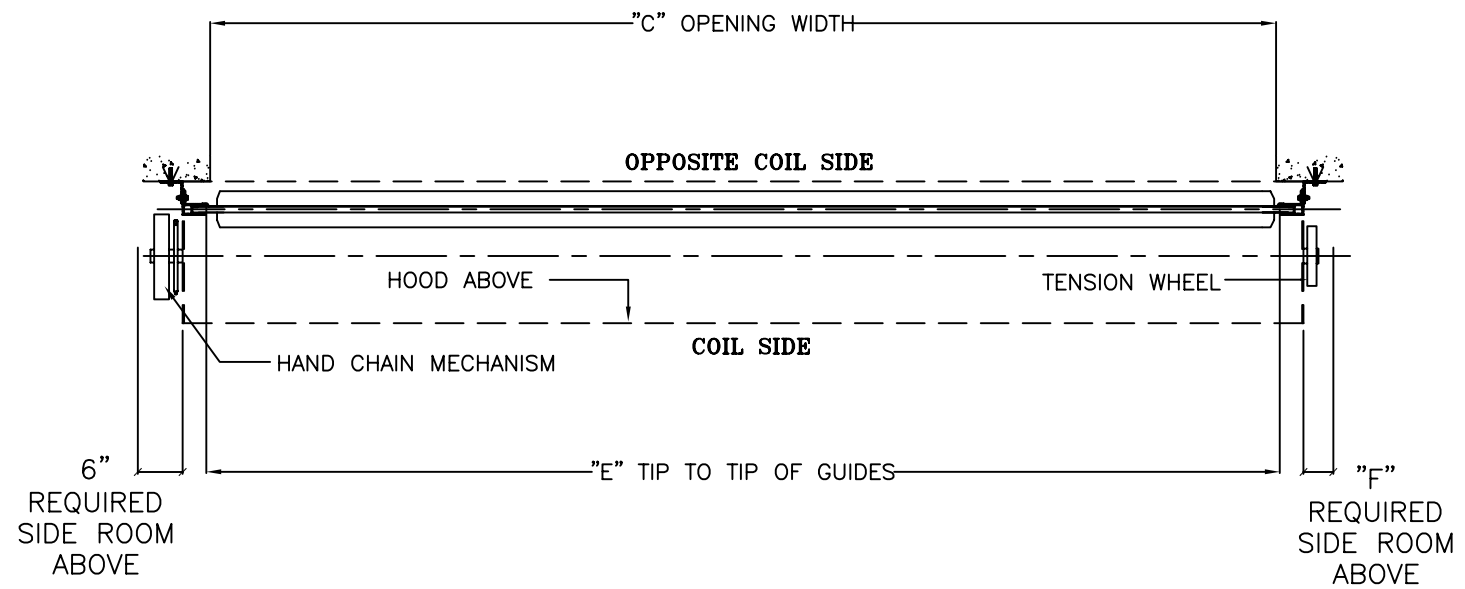
18-20031





INSULATED SERVICE DOOR MODEL IS3000-HC

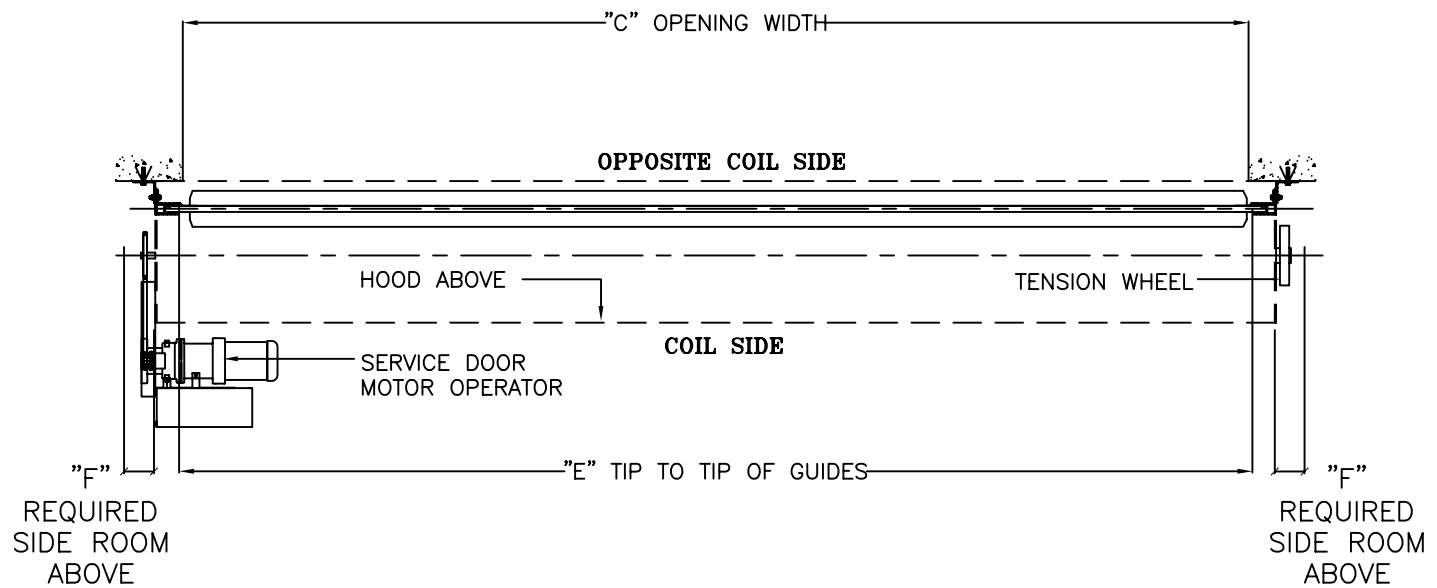
18-30021





INSULATED SERVICE DOOR MODEL IS3000-M

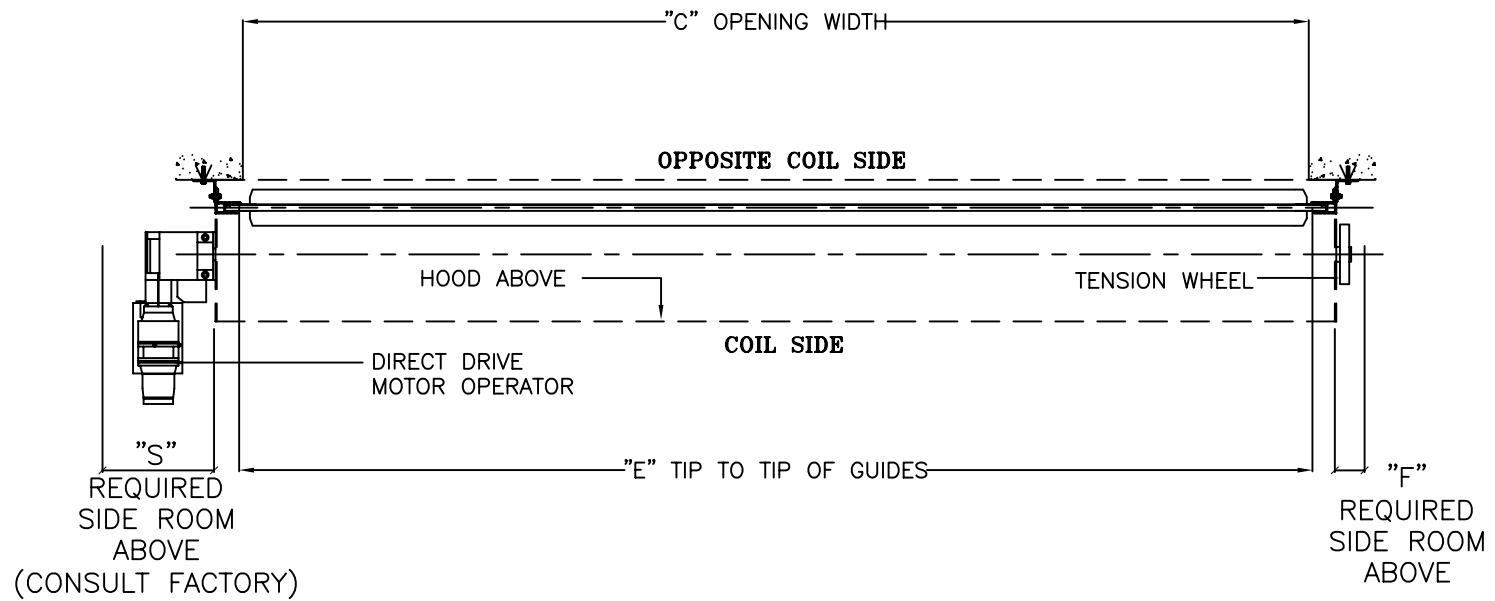
18-30001





INSULATED SERVICE DOOR MODEL IS3000-ADF

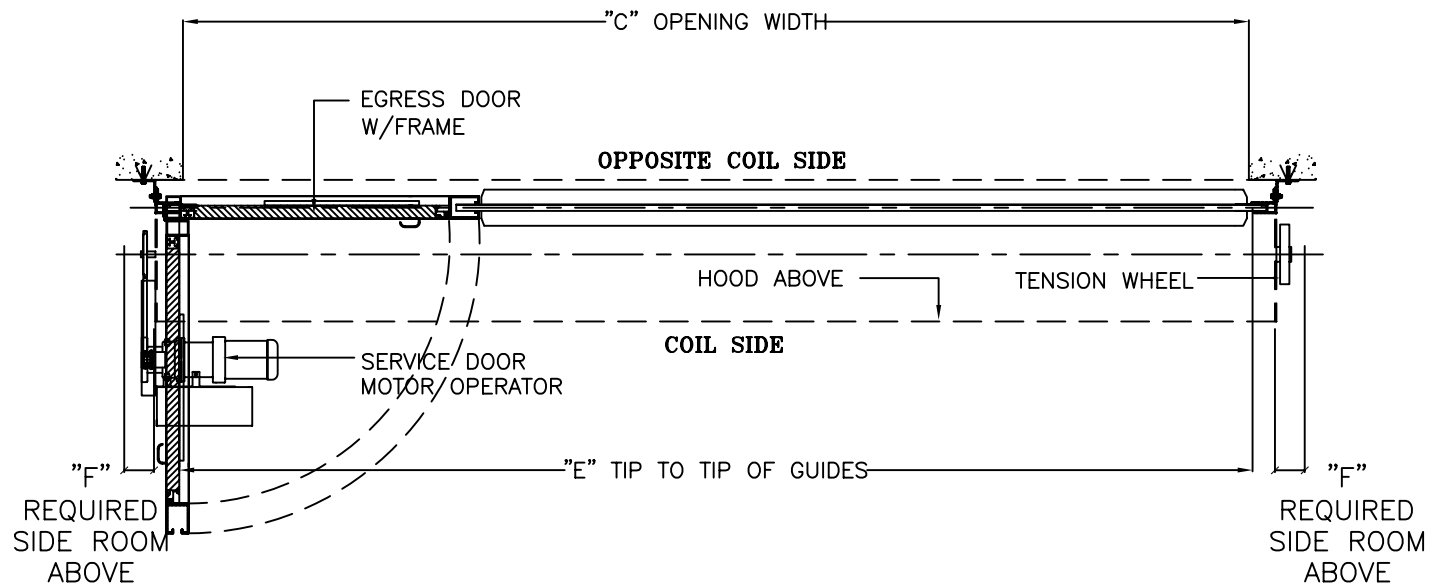
18-30011





INSULATED SERVICE DOOR W/PASS DOOR MODEL IS3000-M-E

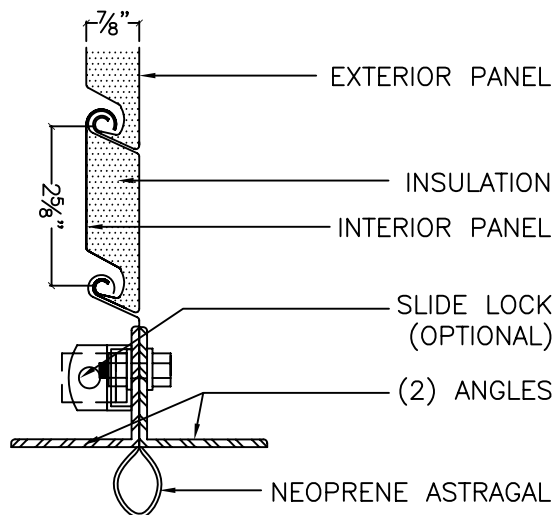
18-30031



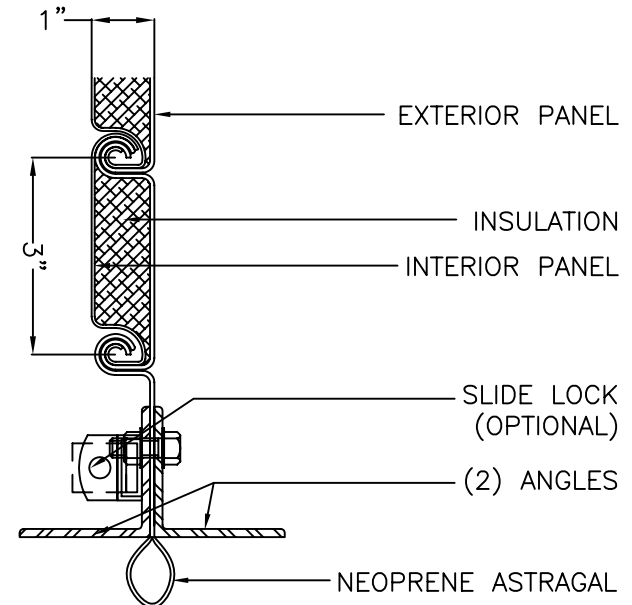


INSULATED SERVICE DOOR MODEL IS3000-HC

18-42102

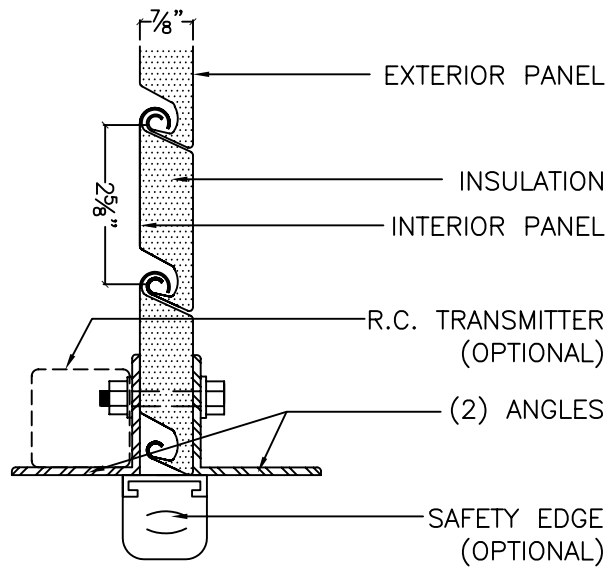


22 GAUGE CURTAINS

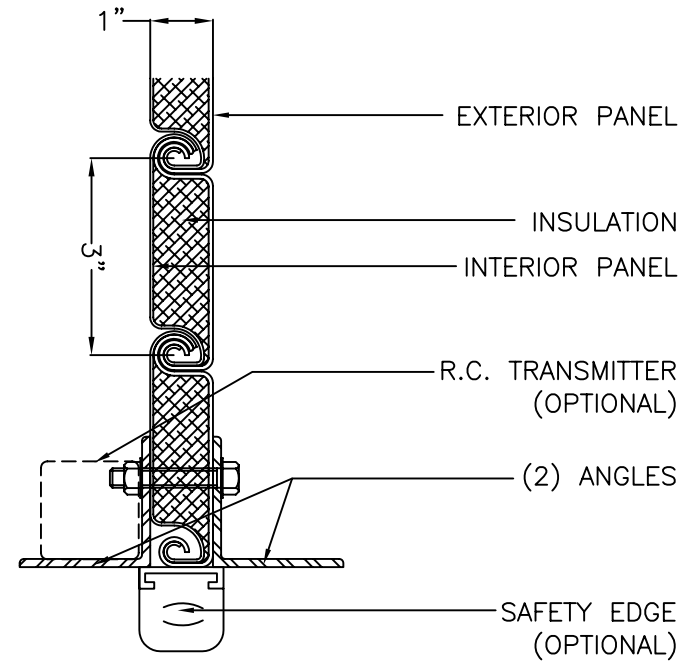


20, 18 OR 16 GAUGE CURTAINS

BOTTOM BAR DETAILS

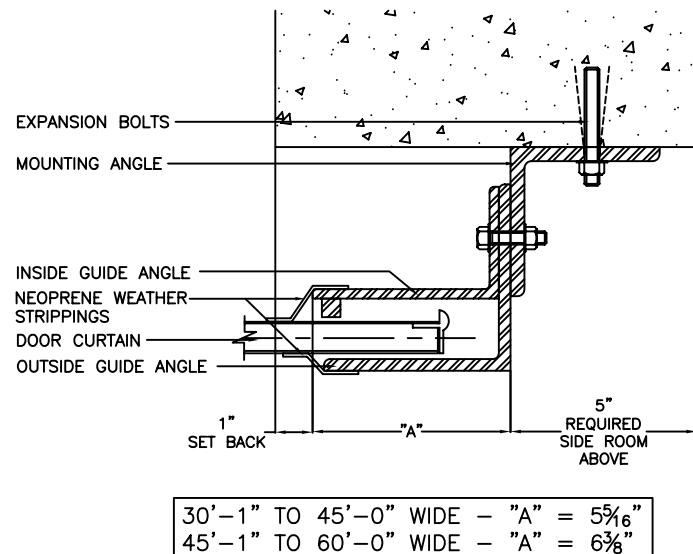
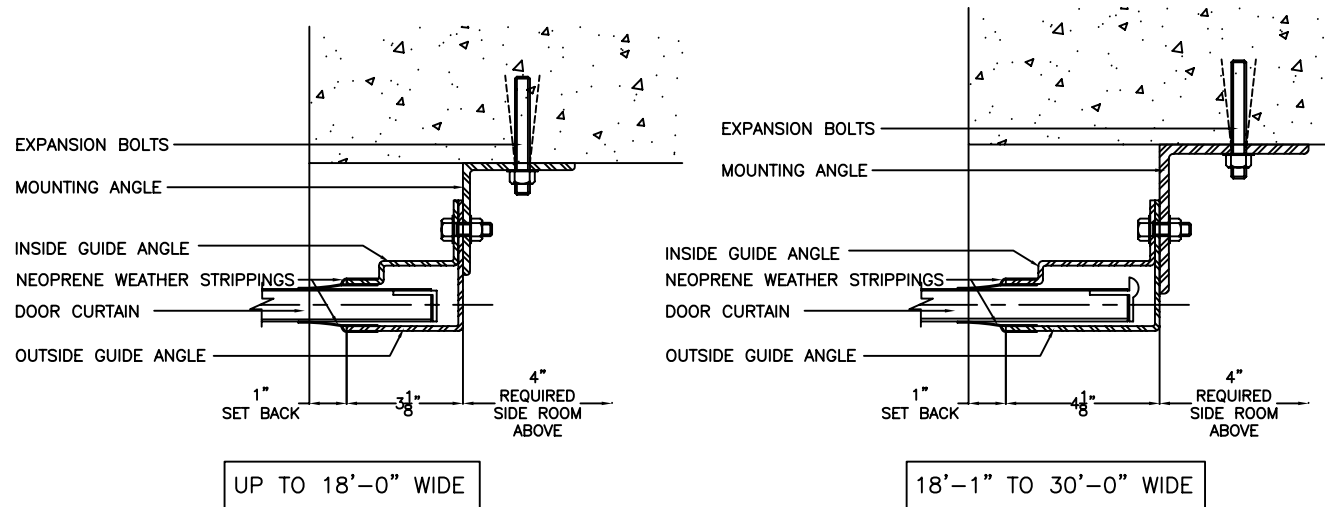


22 GAUGE CURTAINS



20, 18 OR 16 GAUGE CURTAINS

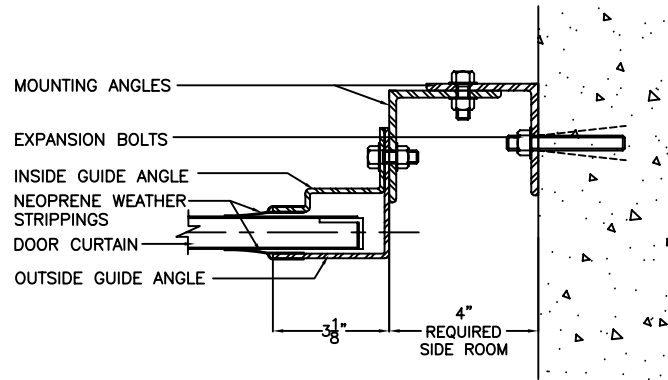
BOTTOM BAR DETAILS



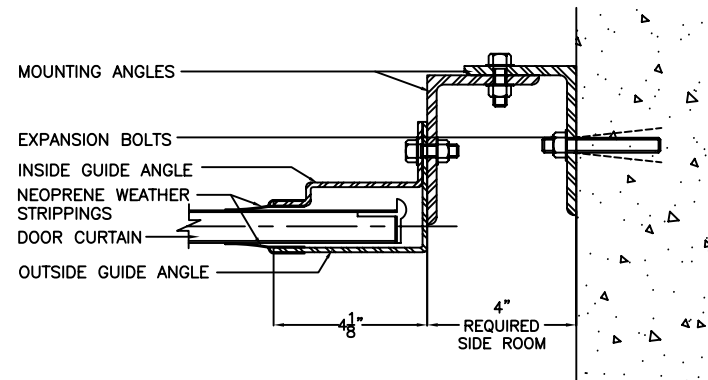


INSULATED SERVICE DOOR MODEL IS3000

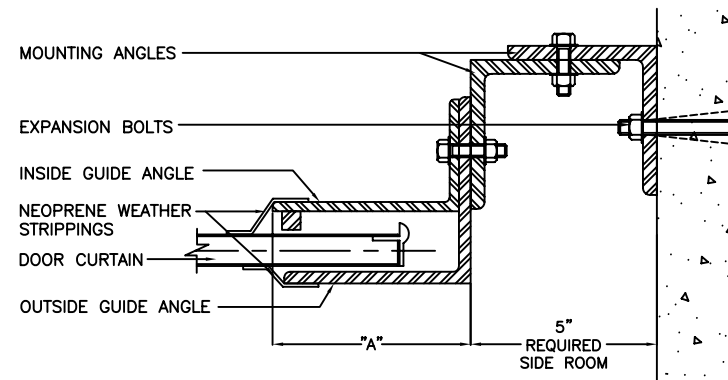
18-43022



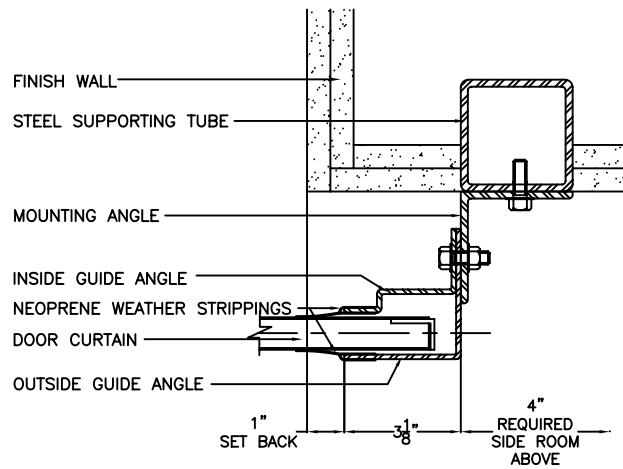
UP TO 18'-0" WIDE



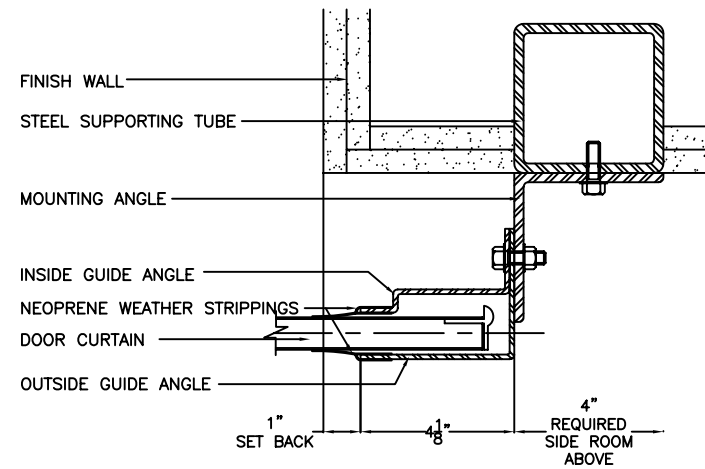
18'-1" TO 30'-0" WIDE



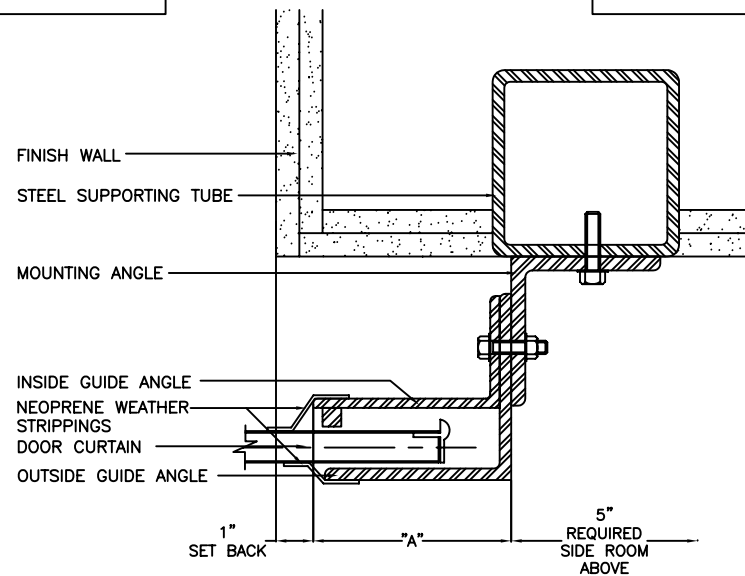
30'-1" TO 45'-0" WIDE - "A" = $5\frac{5}{16}$ "
45'-1" TO 60'-0" WIDE - "A" = $6\frac{3}{8}$ "



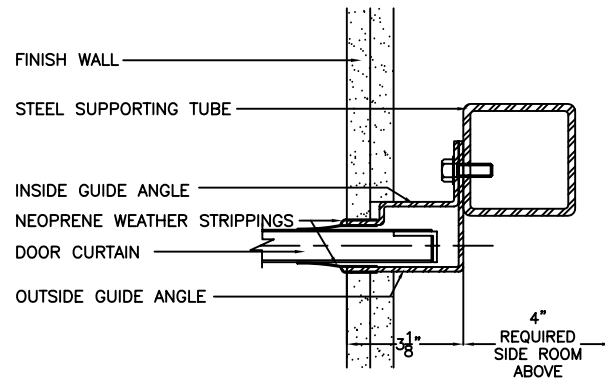
UP TO 18'-0" WIDE



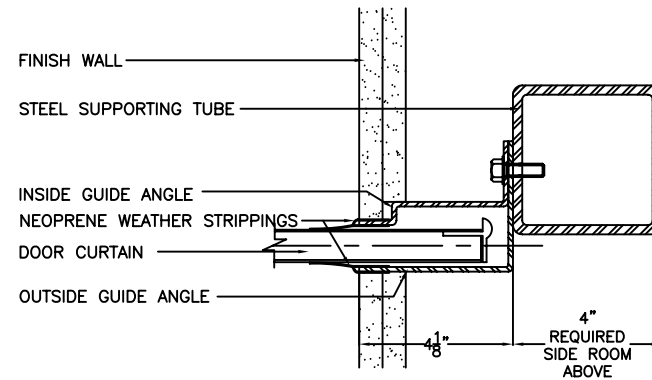
18'-1" TO 30'-0" WIDE



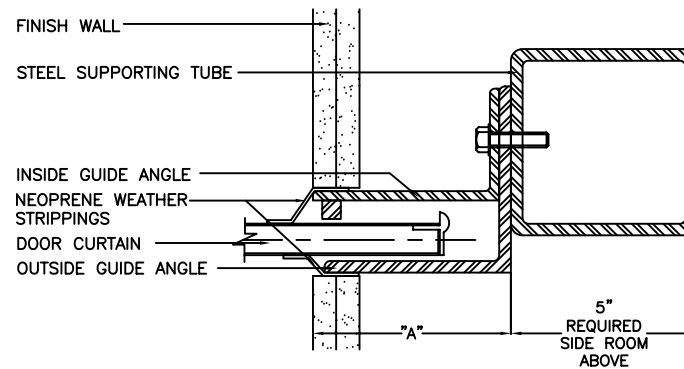
30'-1" TO 45'-0" WIDE - "A" = 5 5/16"
 45'-1" TO 60'-0" WIDE - "A" = 6 7/8"



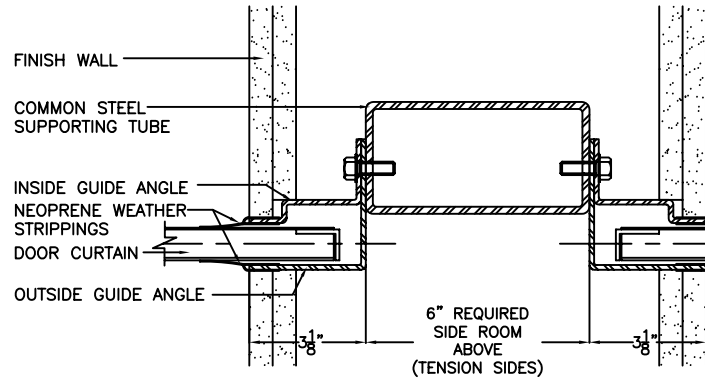
UP TO 18'-0" WIDE



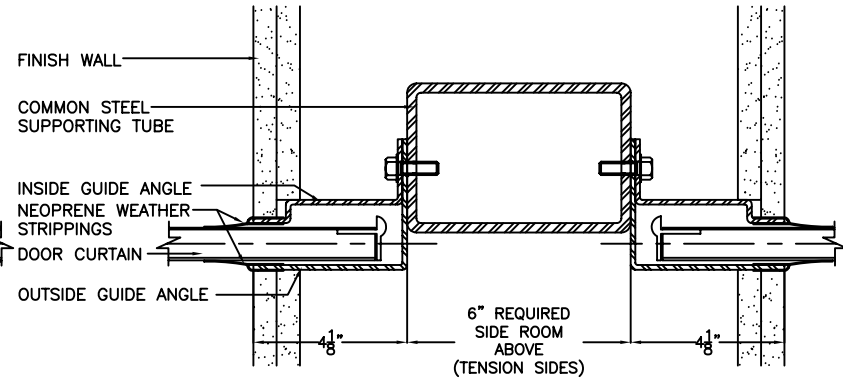
18'-1" TO 30'-0" WIDE



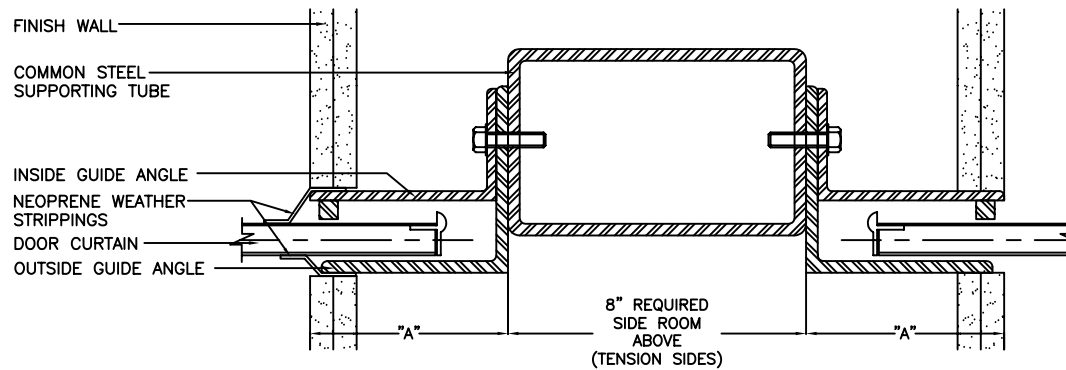
30'-1" TO 45'-0" WIDE - "A" = 5 5/16"
45'-1" TO 60'-0" WIDE - "A" = 6 3/8"



UP TO 18'-0" WIDE

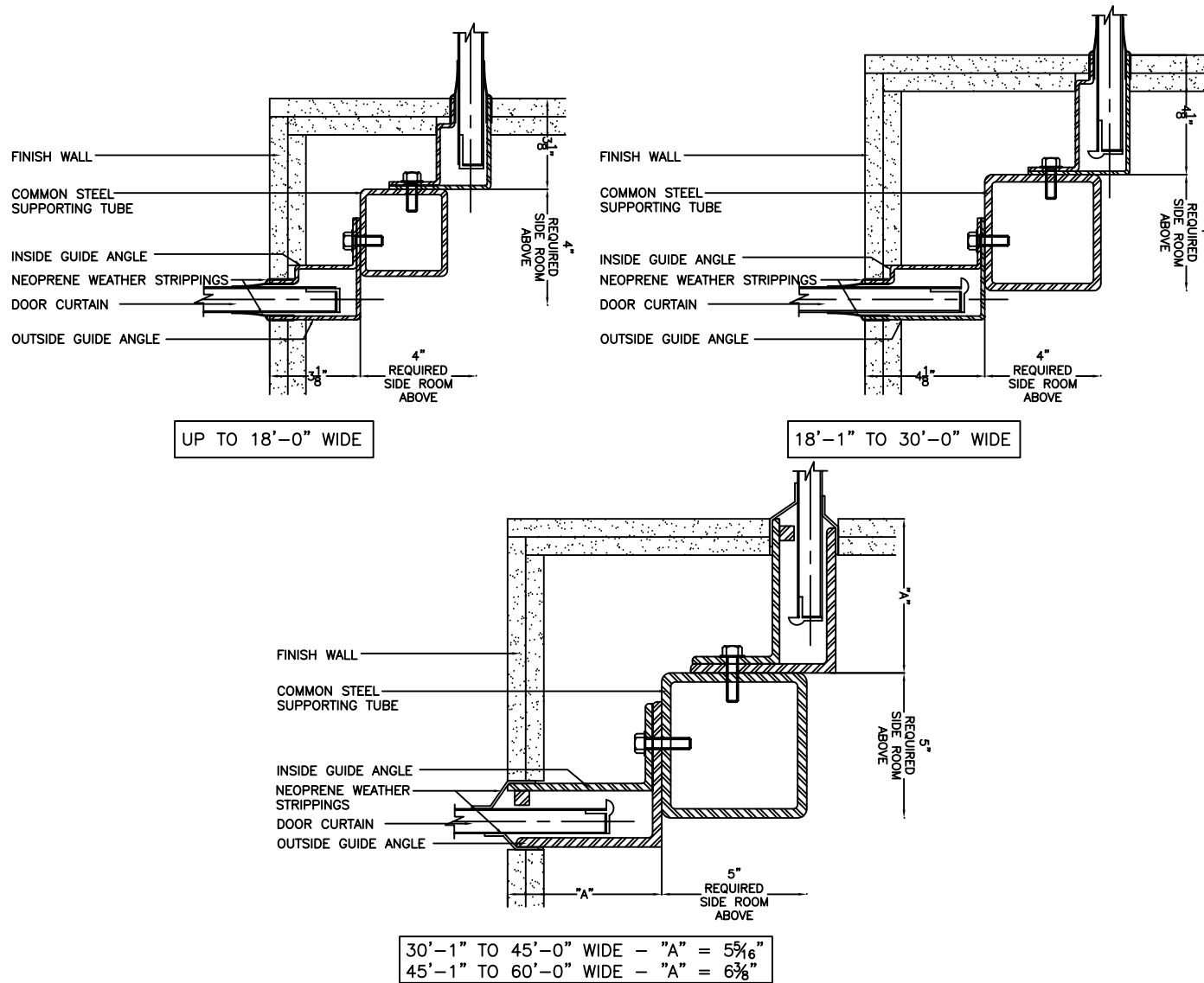


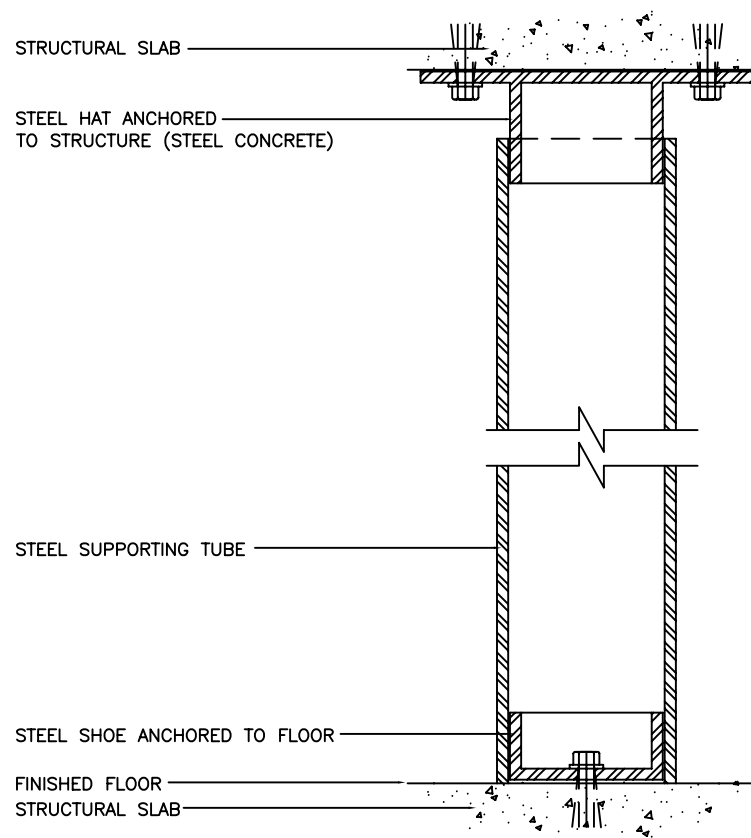
18'-1" TO 30'-0" WIDE



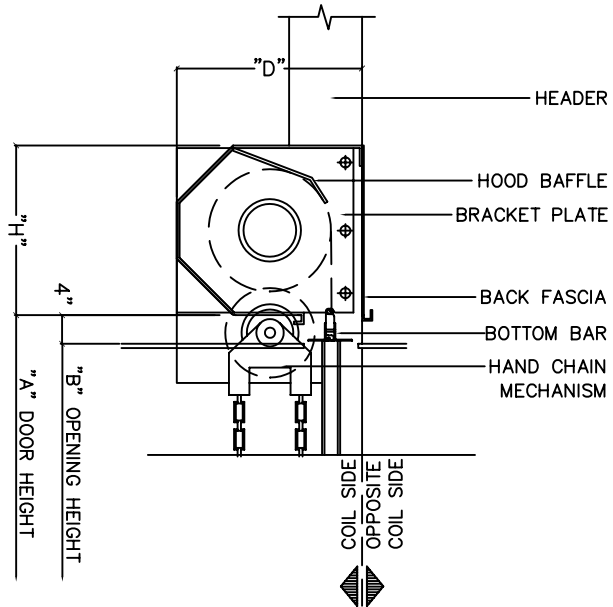
30'-1" TO 45'-0" WIDE - "A" = 5 5/16"

45'-1" TO 60'-0" WIDE - "A" = 6 3/8"

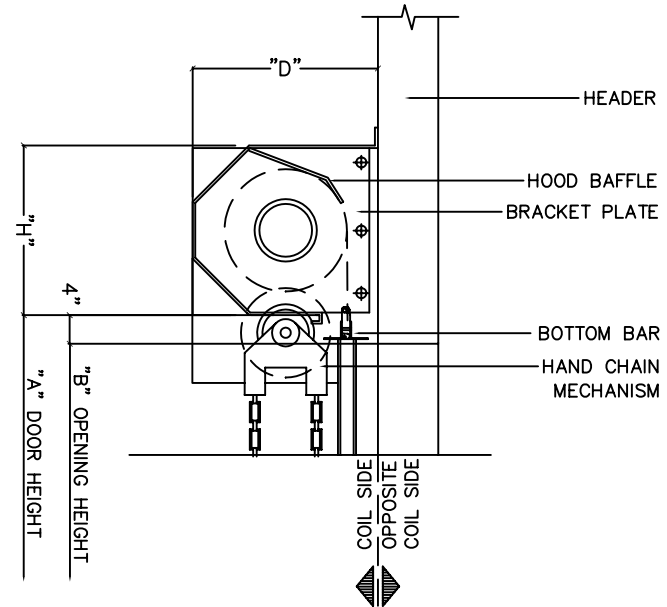




SUPPORTING TUBE DETAIL



BETWEEN JAMB



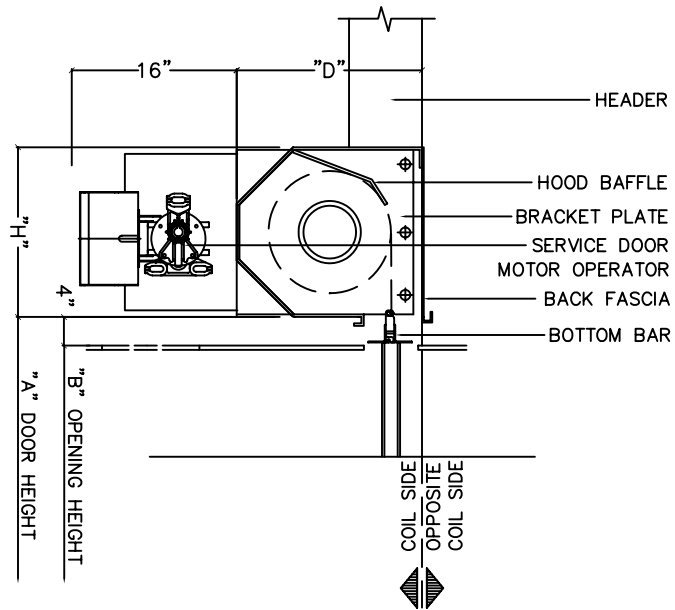
FACE MOUNTED

HOOD MEASURED "H" X "D"
SEE HOOD SELECTION CHART

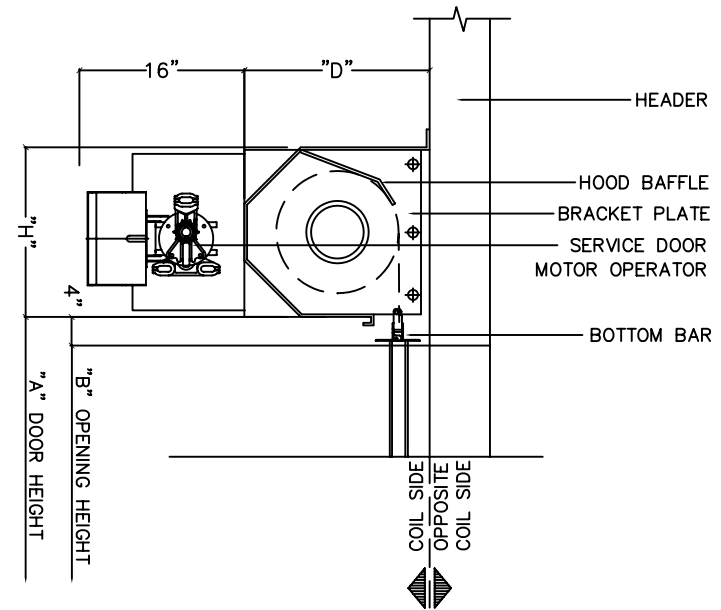


INSULATED SERVICE DOOR MODEL IS3000-M

18-44001



BETWEEN JAMB



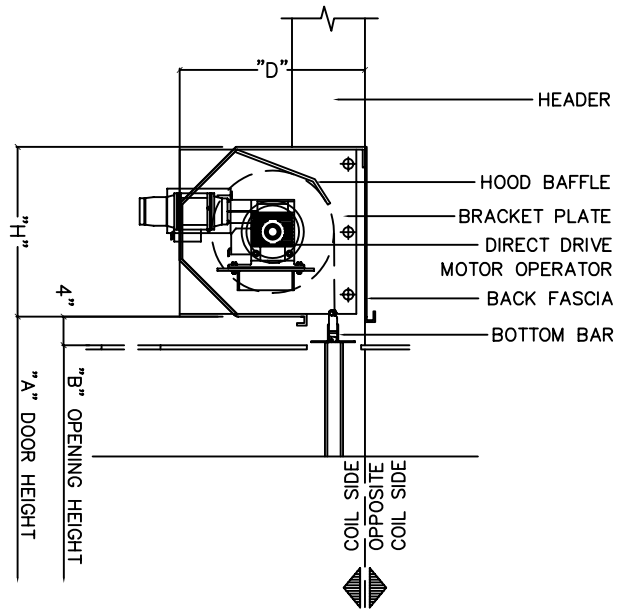
FACE MOUNTED

HOOD MEASURED "H" X "D"
SEE HOOD SELECTION CHART

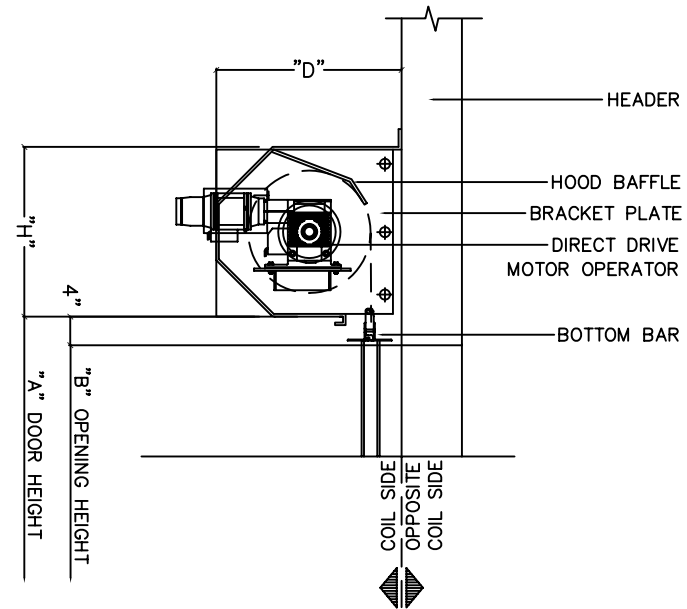


INSULATED SERVICE DOOR MODEL IS3000-ADF

18-44011



BETWEEN JAMB



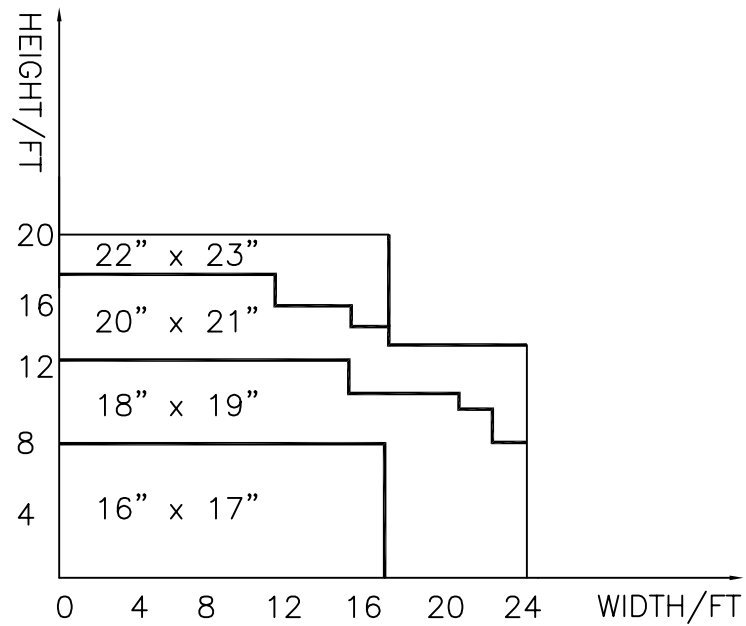
FACE MOUNTED

HOOD MEASURED "H" X "D"
SEE HOOD SELECTION CHART

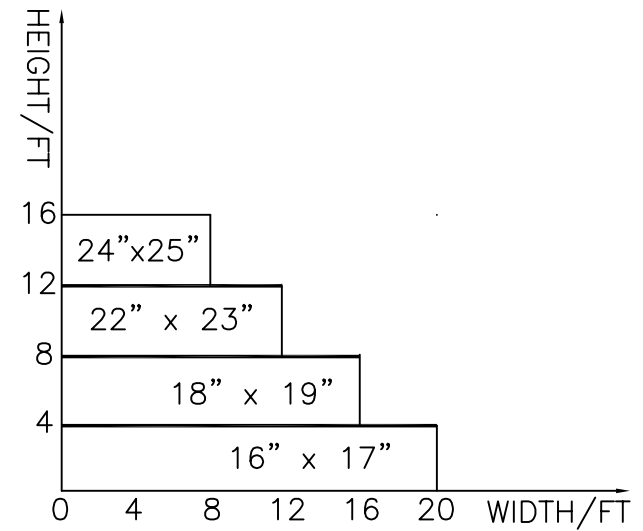


INSULATED SERVICE DOOR MODEL IS3000-HC

18-50001



22 GAUGE CURTAINS

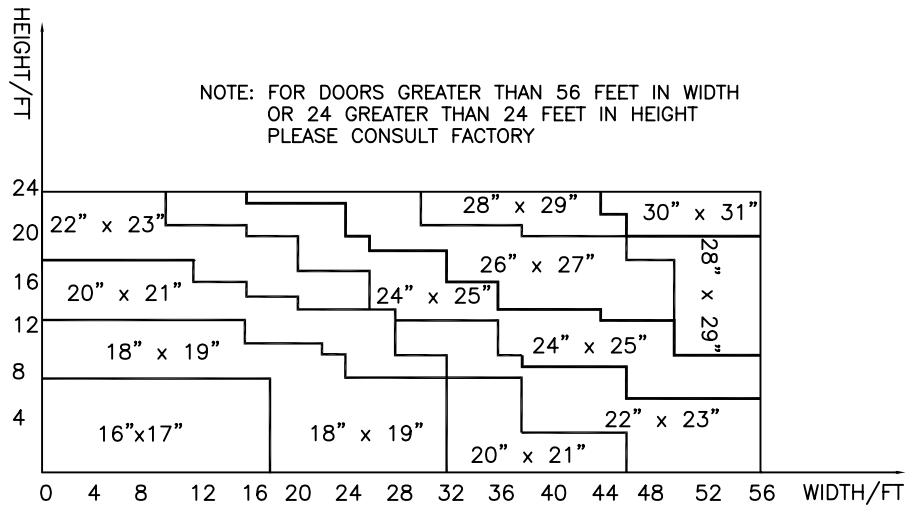


20, 18 OR 16 GAUGE CURTAINS

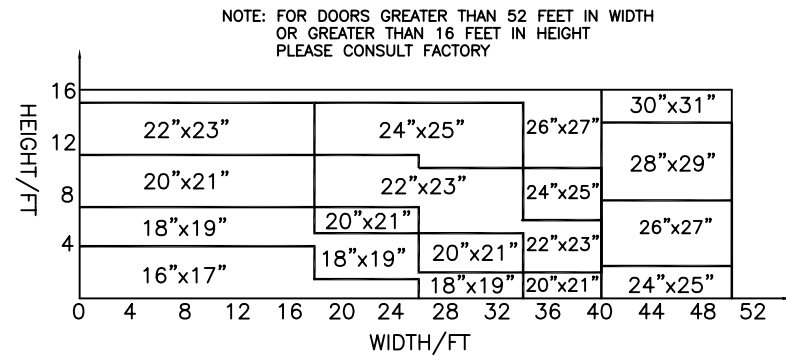


INSULATED SERVICE DOOR MODELS IS3000-M/ADF

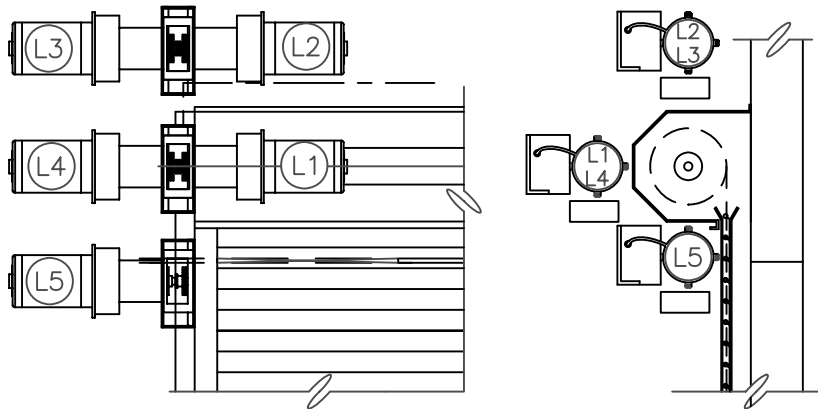
18-50000



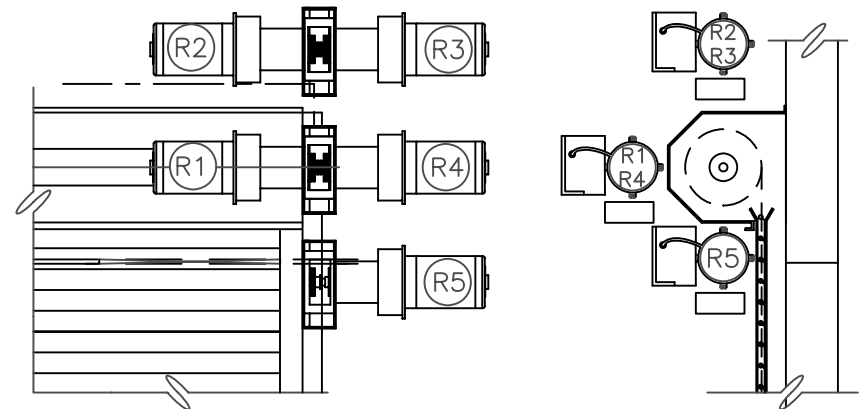
22 GAUGE CURTAINS



20, 18 OR 16 GAUGE CURTAINS



OPTIONAL MOTOR LOCATIONS
LEFT HAND



OPTIONAL MOTOR LOCATIONS
RIGHT HAND