



Technologically advanced sliding doors offer the highest energy efficiency and no drafts through multi-layer seals and engineered lift-slide action. Available in many configurations.



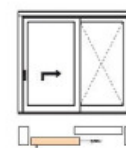
## Specifications

- Timber frame thickness IV 68mm
- Pronounced joints
- Double glazed with 1x 14-20mm airgap, depending on glass thickness
- Choice of glass combinations
- Komfort+: low VOC spray-painted or stained in the colour of your choice
- Komfortline: primed and paint ready
- German lift-slide hardware, multi-point locking
- Multi-layer seals to eliminate drafts, night vent
- Suited for bushfire areas up to and including BAL-29

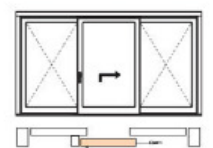
## Size:

- Weight up to 300kg per slider
- Width up to 2400mm per slider
- Height up to 2400mm

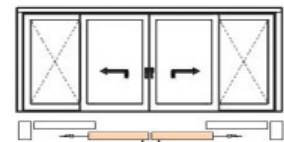
WERS energy rating: from a very low 1.8



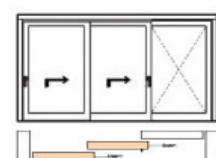
Scheme A



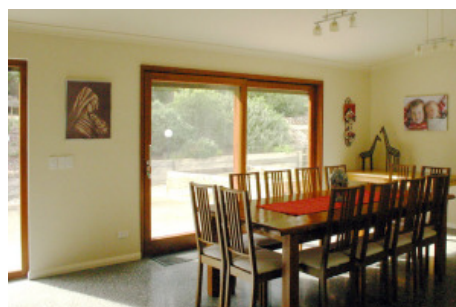
Scheme G



Scheme C



Scheme E





Rebated frames, seals, multi-point locking and double or triple glazing ensure the highest energy efficiency with no rattling. Operated with a handle on every second door, there is no need for shoot bolts.



## Specifications

- Timber frame thickness IV 68mm
- Pronounced joints
- Double glazed with 1x 14-20mm airgap, depending on glass thickness
- Choice of glass combinations
- Komfort+: low VOC spray-painted or stained in the colour of your choice
- Komfortline: primed and paint ready
- German hardware, multi-point locking
- Seals to eliminate drafts
- Inward opening with tilt function, depending on configuration
- Operated with a handle on every second door, no shoot bolts
- Suited for bushfire areas up to and including BAL-29

## Size:

- Width up to 8m (depending on height)
- Height up to 2.4m (depending on width)

WERS energy rating: from a very low 1.8



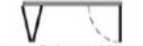
Scheme 431



Scheme 541



Scheme 321



Scheme 330



Scheme 550



Scheme 532



Scheme 651



Scheme 633



Scheme 761



Scheme 770



Scheme 743





Enabling easy access to verandahs and outdoor spaces, French doors are custom made with high energy efficiency, high noise protection and no drafts, due to rebated frames, seals and multi-point locking.



## Specifications

- Timber frame thickness IV 68mm
- Pronounced joints
- Double glazed with 1x 14-20mm airgap, depending on glass thickness
- Choice of glass combinations
- Komfort+: low VOC spray-painted or stained in the colour of your choice
- Komfortline: primed and paint ready
- German multi-point locking hardware
- Seals to eliminate drafts
- Suited for bushfire areas up to and including BAL-29

## Size:

- Width up to 2400mm
- Height up to 2400mm

WERS energy rating: from a very low 1.8





High security is ensured with multi-point locking, and 3-D-adjustable hinges and seals work together to ensure a draft-free fit. Barrier-free threshold available.



## Specifications

- Timber frame thickness IV 68mm
- Pronounced joints
- Double glazed with 1x 14-20mm airgap, depending on glass thickness
- Choice of glass combinations
- Komfort+: low VOC spray-painted or stained in the colour of your choice
- Komfortline: primed and paint ready
- German multi-point locking hardware
- Seals to eliminate drafts
- Suited for bushfire areas up to and including BAL-29

## Size:

- Width up to 1300mm
- Height up to 2400mm

WERS energy rating: from a very low 1.8

