

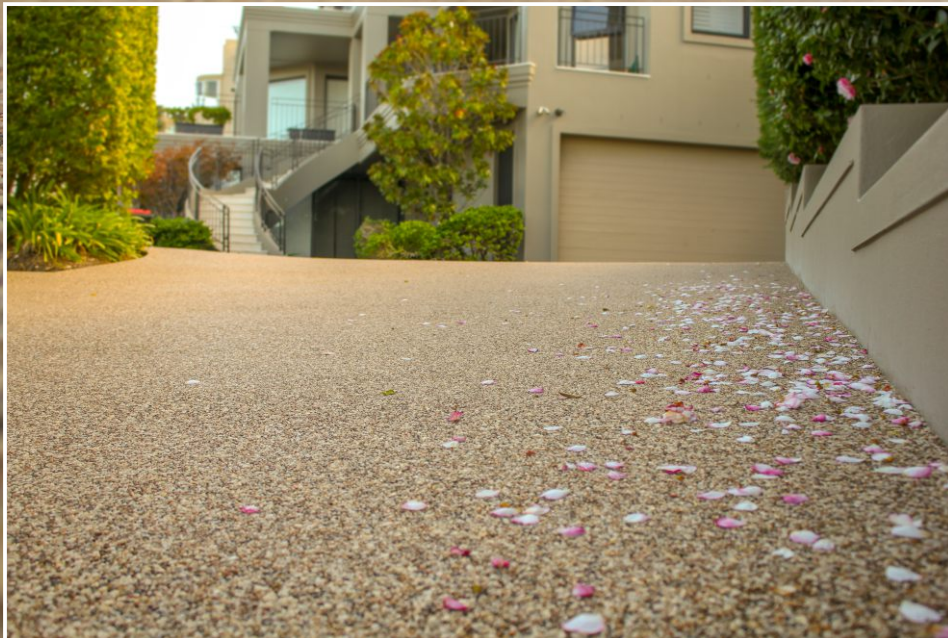
# StoneSet 2019 Inspiration Book





CASTLE HILL  
Natural stone  
Resurfacing

“Natural stone has a timeless charm. An organic appeal to the senses, an earthly retreat in your home.”



... from the moment you enter the driveway to the time you retreat to the pool...



Overlay existing paved surface  
Stone - 6mm Beach at 16mm depth  
Cost - \$110/sqm (approx. at 200+sqm)

Blessed with palms and a sun drenched rear courtyard these homeowners were inspired to create a tropical oasis in their own back yard.

The warm yellow tone of this blend of Beach stone formed a bright natural harmony with the property's beige exterior. Unifying the properties surrounds, from the moment you enter the driveway, to the time you retreat to the pool.



Here, porous stone paving was also a practical choice. Resin bound stone created a porous hard surface with no loose stone. Together with small amounts of vegetation they created a functional low maintenance yard. Rainwater could permeate through to support the palms and surrounding vegetation, like sand on a beach.



**BOSSLEY PARK**  
Two-tone decorative  
resurfacing

“The modern driveway is a display of sound architectural form and function”



Two tone decorative driveway  
Stone - 6mm Charcoal Ash swirls  
Cost - \$110/sqm (approx. at 200+sqm)

The modern driveway is not a utility, it is a canvas. Your driveway can occupy up to 30% of the visual frontage of your home, with significant influence on appearance and value.

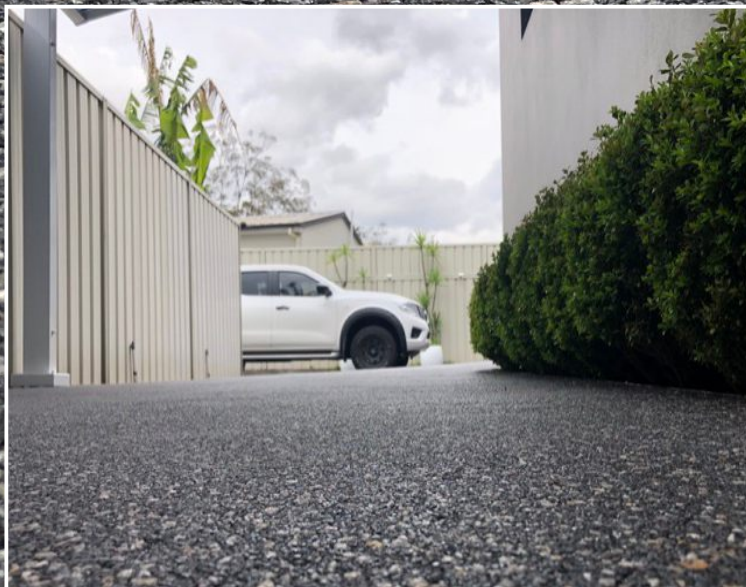
The modern driveway is not only functional but beautiful. Through 2018 Driveways were being re-imagined by progressive homeowners. A simple application of aluminium angle (normally used only for side edging) is used to divide colors of stone being applied, creating a pattern across the driveway.

The modern driveway is a display of sound architectural form and function. Natural stone withstands UV exposure, whilst allowing free passage of water (porosity). High grade resin binds the stone below the surface, un-affected by UV wear or puddles causing erosion.





**GREEN VALLEY**  
large driveway  
resurfacing



Overlay large concrete driveway  
Stone - 6mm Charcoal Harvest at 16mm depth  
Cost - \$110/sqm (approx. at 180sqm)

With the increase in the cost of land, large concrete driveways have become more prevalent, on battle axe and subdivided blocks, strata title apartments and townhouse communities. Over the years these driveways can become cracked and are patched up, without losing their structural integrity.

By resurfacing an old, existing driveway you can dramatically reduce the waste and cost of disposing concrete to landfill. Taking advantage of a 1 day installation time and 1 day curing time, an overlay of 16mm resin bound stone was the most cost effective option to achieve a premium natural stone finish this property deserved.

A unique blend of dark 'Charcoal' with flecks of cream 'Harvest' stone was matched to the properties existing garage and fencing.

“By resurfacing an old existing driveway you can dramatically reduce the waste and cost of disposing concrete to landfill”





**GLENWOOD**  
Steep driveway  
applications



More important than porosity, appearance and cost is safety. Particularly on steep driveways with an incline of over 15 degrees.

The surface of natural stone is inherently slip resistant. Stone voids and edges provide greater amounts of friction points compared with flush pavers or concrete. Resin bound stone improves on this safety by ensuring

no incidence of loose stone or gravel de-stabilisation. Wanting to not only meet but exceed these non-slip characteristics, StoneSet is also able to incorporate a fine grade of sand with the stone and resin at the point of mixing. This affords a StoneSet surface one of the highest values of slip resistance amongst decorative residential paving.

Commercially, the StoneSet product is specified frequently by professionals for use in highly trafficked public walkways.

StoneSet achieves one of the highest AU/NZS ratings for slip resistance, 'R11' rating under the wet pendulum test for 'Oil Wet Ramp Test'. Essentially making it suitable for public ramps with an incline as steep as 27 degrees.

“StoneSet achieves one of the highest AU/NZS standards for slip resistance..suitable for public ramps with an incline up to 27°”