

DESSO

Verso

CARPET TILES

Contemporary
& minimalistic
design

 **Tarkett**

DESSO® Verso

The DESSO Verso collection has been refreshed with a contemporary new colour palette. The minimalist Scandinavian design brings a calming atmosphere to workplace interiors, and is backed up by key sustainability credentials.

Designed with the needs of the workplace in mind, the carpet tiles feature a taut structure and take inspiration from industrial spaces. This combination results in simple, understated form, and unparalleled function.

The collection's colour palette comprises 8 neutral tones and 4 accents that range from earthy greens to rusty reds. Each shade takes creative cues from raw and composite elements, such as concrete, steel and stone.

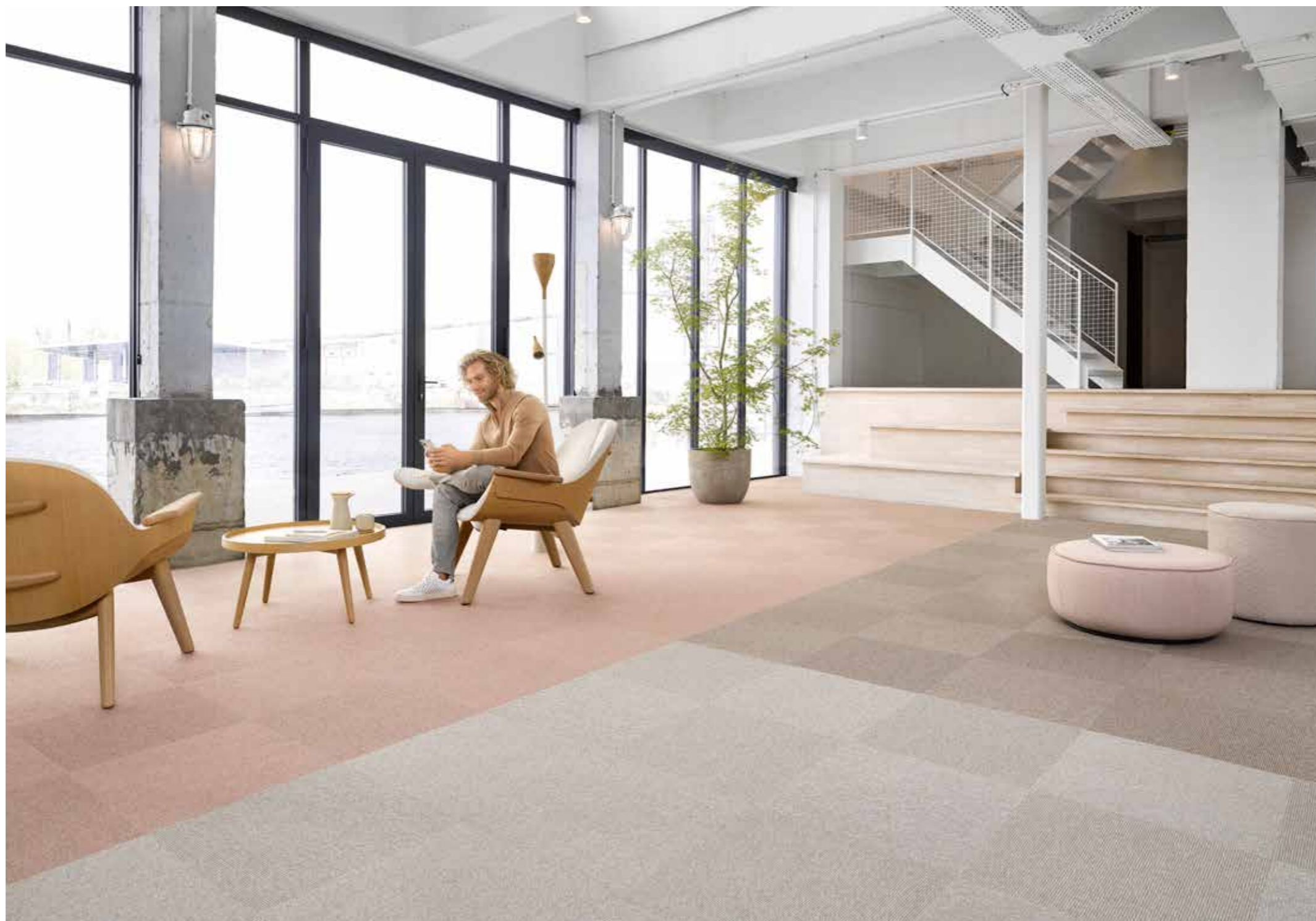
The 50 x 50 cm compactuft Carpet Tiles can be easily installed in a variety of commercial settings, from meeting areas to corridors and reception areas. Additionally, Verso can be seamlessly combined with other DESSO ranges, as well as Tarkett Luxury Vinyl Tiles, for limitless styling options.

DESSO Verso is Cradle to Cradle® Silver level certified with DESSO EcoBase backing, which contains up to 80% positively defined recycled content*, as standard. Its yarn also contains 75% recycled material. As a result, the tile's total amount of recycled content amounts to more than 57%, making it not only a stylish solution but a sustainable one too.

* Lloyd's Register assured as 100% pre-consumer recycled material.



Minimalistic Scandinavian design



Verso 1708, 9095, 1320



1320



9095



1708

Minimalistic Scandinavian design



Verso 1708, 9095, 1320

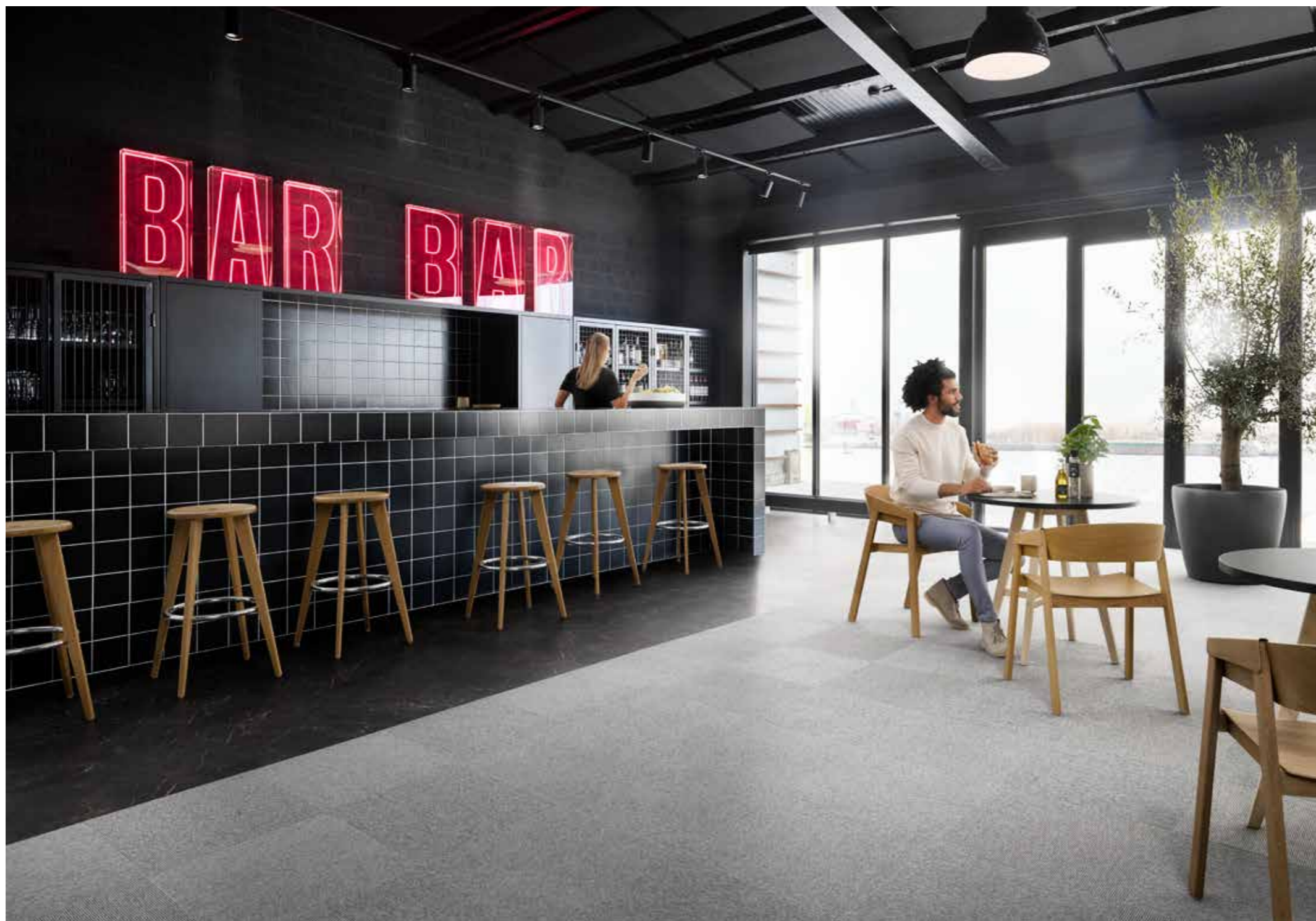


Verso 1708, 9095, 1320



Verso 9095, 1708, 1320, 4423, 9092,9944, 7926, 9500, 9531, 9024, 9025, 9964,
iD Inspiration belgian stone dune, iD Inspiration fibra terracotta, iD Inspiration emperodor grey,
iD Inspiration chantillon oak beige, iD Inspiration carrara grande white, iD Inspiration rock grey,
iD Inspiration charred wood black, iD Inspiration breccia grey, iD Inspiration marquina grande black,
iD Inspiration loose-lay marble black 24644030

Inspired by industrial spaces



Verso 9944, ID Inspiration loose-lay marble black 2464403



9944

Bring a calming atmosphere to the workplace

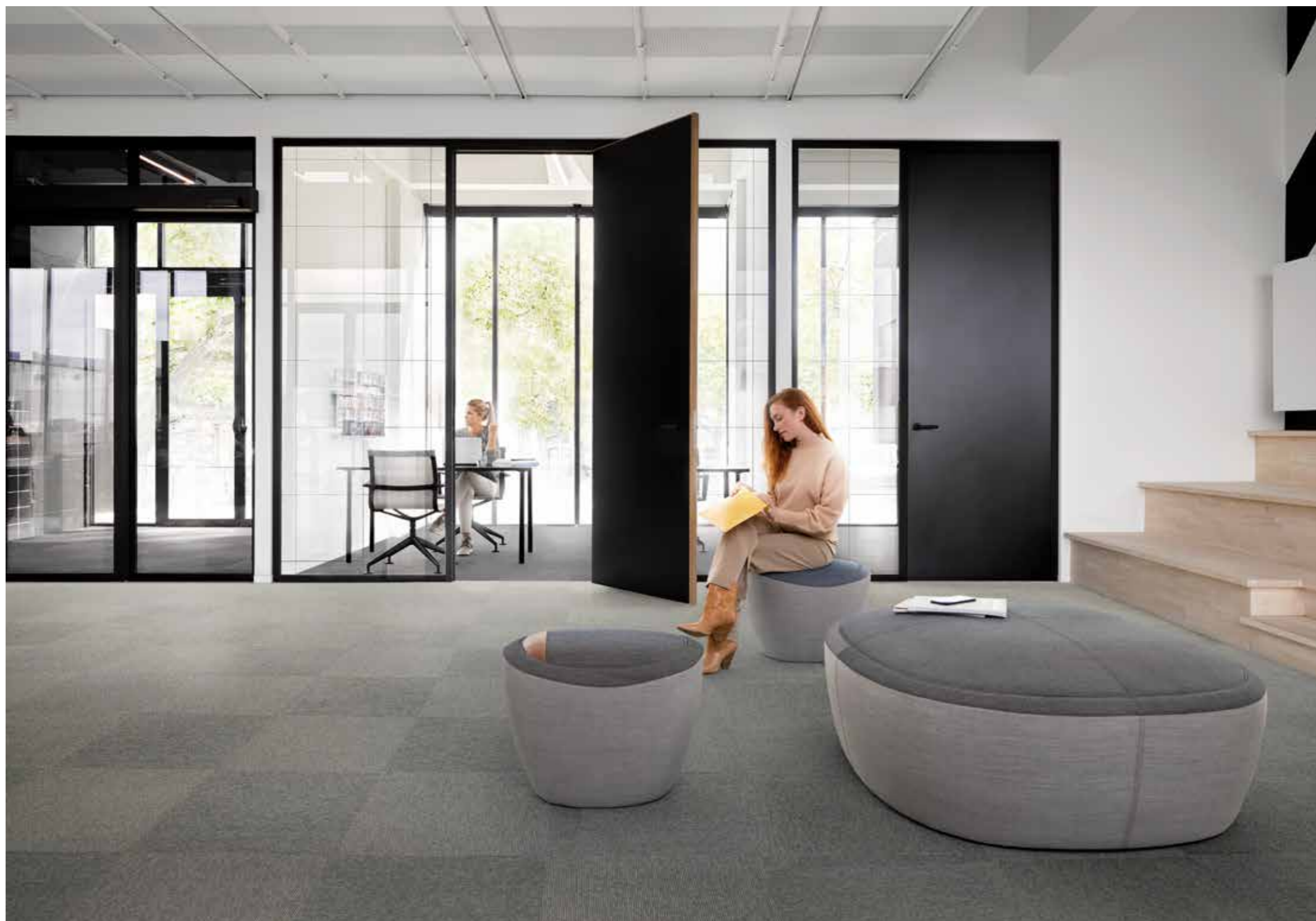


Verso 9944, iD Inspiration loose-lay marble black 2464403

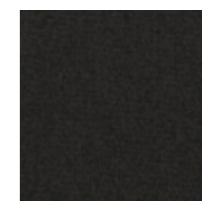


Verso 9944, iD Inspiration loose-lay marble black 2464403

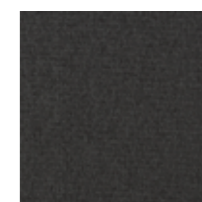
Simple, understated form



Verso 7926, 9500, 9531



9531



9500



7926

Simple, understated form



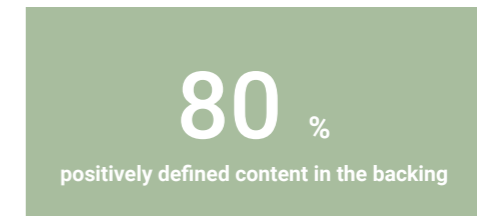
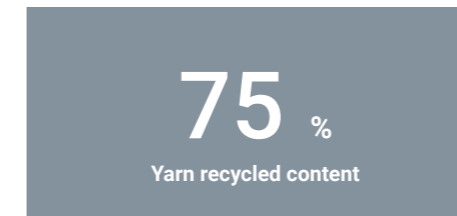
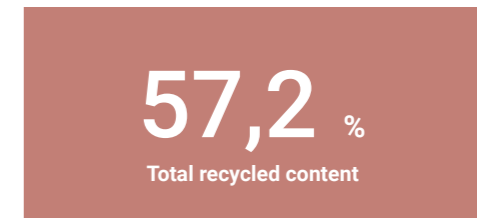
Verso 7926, 9500



Verso 7926, 9500



Sustainability credentials



* DESSO EcoBase® is a polyolefin based backing. Positively defined means: all ingredients have been assessed as either Green (optimal) or Yellow (tolerable) according to the Cradle to Cradle® assessment criteria.

DESSO EcoBase®

DESSO ECOBASE BACKING

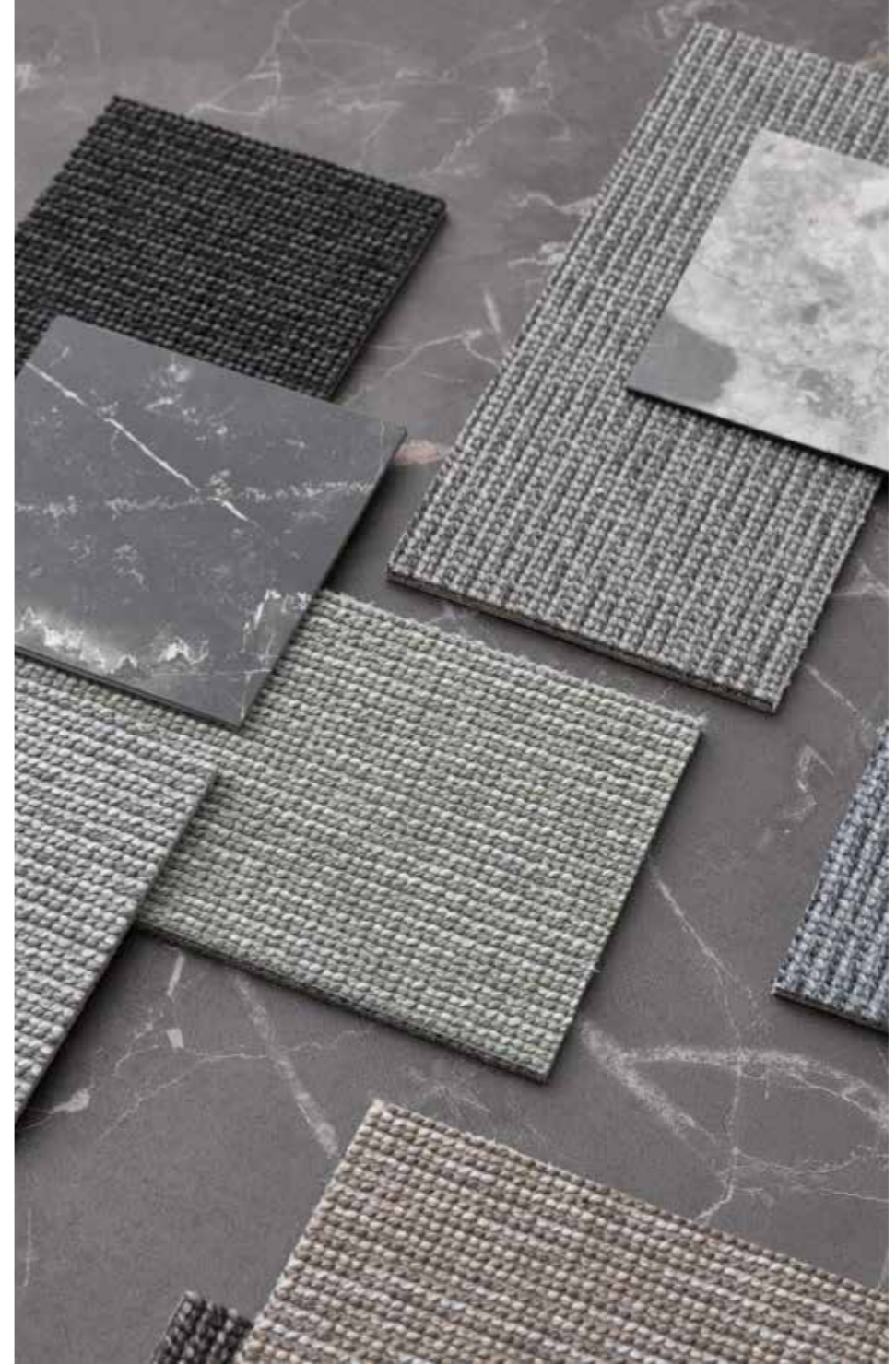
DESSO EcoBase is 100% recyclable in our own production process and contains an average of 80% recycled chalk from the local drinking water industry.* In 2015, the DESSO EcoBase backing achieved Cradle to Cradle® Gold level certification and reached Platinum level for Material Health.

* Lloyd's Register assured the EcoBase backing as 100% recyclable and the chalk as 100% pre-consumer recycled material.

Simple, understated form



Verso 7926



iD Inspiration breccia grey, iD Inspiration marquina grande black, iD Inspiration loose-lay marble black 24644030, Verso 9944, 7926, 9964, 9095, 9024, 9964

Colour range Verso



TECHNICAL DATA SHEET

Product Characteristics	Standards	DESSO® Verso						
Type of manufacture	ISO 2424	Tufted 1/10*						
Aspect	ISO 2424	Compact tuft loop pile						
Dye method		Solution dyed						
Dimension	EN ISO 24342	50 x 50cm (20 tiles per box)					19,68" x 19,68"	
Primary backing	ISO 2424	Polyester fleece						
Secondary backing	ISO 2424	DESSO EcoBase® * - 100% recyclable, contains on average 80% positively defined recycled content.*						
Pile fibre composition	ISO 2424	BCF Polyamide 6 with 75% recycled content						
Total thickness	ISO 1765	5.5mm						
Effective pile thickness	ISO 1766	0.7mm						
Total mass	ISO 8543	3950g/m ²		116.6 oz/yd ²				
Total pile mass	ISO 2424	450g/m ²		13.3 oz/yd ²				
Effective pile mass	ISO 8543	120g/m ²		3.5 oz/yd ²				
Pile density	ISO 8543	0.171g/cm ³		0.0062 lb/in ³				
Number of tufts	ISO 1763	1380/dm ²		115382/yd ²				
Performance Characteristics	Standards	DESSO® Verso						
Reaction to fire	ISO AS 9239-1	Critical Radiant Flux 9.2kW/m ² Smoke - 22%.min						
Stroll test	ISO 6356	≤2,0 kV						
Vertical resistance	ISO 10965	≤ 1 x 10 ⁹ Ohm						
Horizontal resistance	ISO 10965	- Ohm						
Luxury rating	EN 1307	LC 1						
Dimensional stability	EN 986	≤ 0,2 %						
Impact sound reduction	ISO 10140	ΔL _w 18 dB						
Sound absorption	ISO 354	α _s	125	250	500	1000	2000	4000
			0.00	0.01	0.06	0.12	0.24	0.29
Noise reduction	ISO 354	0.15 a _w						
Thermal resistance	ISO 8302	≤ 0,048 m ² K/W						
Sustainability Performances	Standards	DESSO® Verso						
Cradle to Cradle®	-	Silver						
CRI Green Label Plus Certification	-	GLP 3372						
Global Green Tag	-	Level A						
Phthalate - free	-	Yes						
Recycled Content	-	57.2%						
Carbon Footprint	-	6.61kg CO ₂ eq/m ² (Cradle to Gate Only)						
Material Health Statement	-	Available						
Total VOC Emissions (after 28 days)	EN 16516	Gold (≤ 100 µg / m ³)						

* DESSO EcoBase® is a polyolefin based backing. Positively defined means: all ingredients have been assessed as either Green (optimal) or Yellow (tolerable) according to the Cradle to Cradle® assessment criteria. As described in Cradle to Cradle® Certified CM Product Standard Version 3.1. The total % of recycled content varies per product and per colour which can be found on our website: www.tarkett.com.au
For products with acoustic backing: SoundMaster/SoundMaster Lite backings contain 80% recycled polyester felt, SoundMaster Thrive is a low antimony polyester felt.

DESSO flooring products are to be installed in full accordance with Tarkett's installation instructions and recognized trade standards. An effective, regular cleaning and maintenance program is vital for retaining a high appearance level. DESSO flooring products should only be used as floorcoverings. Note: Tarkett reserves the right to change this specification without prior notice; changes are subject to normal production tolerances. For the latest versions of the technical specifications, visit www.tarkett.com.au

Disclaimer: Please note that products in photos are installed for creative purposes and not according to technical specifications. Please refer to Tarkett installation instructions for guidance.


 Manufactured by:
Tarkett BV
 Taxandriaweg 15
 NL - 5142 PA Waalwijk





 For Global Green Tag certificates please see the Tarkett Australia page at globalgreentag.com

Quality- and Environmental Management System Certification
 ISO 9001 & ISO 14001

Tarkett Australia
 Suite 1, Level 3, 3 Columbia Court, Baulkham Hills, NSW 2153
 (02) 8853 1200
customerservice@tarkett.com
www.tarkett.com.au





Tarkett Human-Conscious Design™

Tarkett Human-Conscious Design™ is our pledge to stand with present and future generations. To create flooring and sports surfaces that are good for people and for the planet. And to do it every day.

We deliver on this through the synergy of three commitments:

- 1 Deep human understanding
- 2 Conscious choices. For people and planet
- 3 With you. Every step of the way

Tarkett Australia

Suite 1, Level 3, 3 Columbia Court,
Baulkham Hills NSW 2153

(02) 8853 1200
customerservice@tarkett.com
www.tarkett.com.au

About Tarkett

With a history of 140 years, Tarkett is a worldwide leader in innovative flooring and sports surface solutions, with net sales of € 2.6 billion in 2020. Offering a wide range of products including vinyl, linoleum, rubber, carpet, wood, laminate, artificial turf and athletics tracks, the Group serves customers in over 100 countries across the globe. Tarkett has more than 12,000 employees and 33 industrial sites, and sells 1.3 million square meters of flooring every day, for hospitals, schools, housing, hotels, offices, stores and sports fields. Committed to change the game with circular economy and to reducing its carbon footprint, the Group has implemented an eco-innovation strategy based on Cradle to Cradle® principles, fully aligned with its Tarkett Human-Conscious Design™ approach. www.tarkett.com.au

© Tarkett, 2024

Descriptions, colours and specifications are subject to change without notice. Tarkett is not responsible for typographical/photographical errors. Actual product may differ from illustration. All rights reserved. Reproduction in whole or in part is prohibited without the prior written consent of the copyright owner. The information presented in this document does not form part of any quotation or contract, is believed to be accurate and reliable and may be changed without notice. No liability will be accepted by the publisher for any consequence of its use. Publication thereof does not convey nor imply any license under patent- or other industrial or intellectual property rights. In case of doubt or differences of interpretation, the English version shall prevail over all other language versions.

Photography / post processing: Alexander van Berge
Styling: Bregje Nix
Thanks to: Linteloo, Hollandslicht, Ahrend, Hay, Vitra, Muuto, Casala

Front image: Verso 9944, iD Inspiration loose-lay marble black 2464403