

DISCOVER
A WORLD
YOU WOULD



**LOVE TO
LIVE IN**

DISCOVER A WORLD YOU WOULD LOVE TO LIVE IN WITH
THE LATEST HOME COLOUR TRENDS FROM QUICK-STEP

Nougat oak oiled | Imperio | IMP1626



QUICK STEP

Reclaimed chestnut natural planks |
Eligna | UW1541



2014 TREND REPORT: KEY COLOUR PREDICTIONS AND HOW TO NAIL THEM

TAKE INSPIRATION FROM
THE HOTTEST COLOUR
TRENDS IN FURNITURE,
SOFT FURNISHINGS,
WALLS AND FLOORS
ON QUICK-STEP'S RADAR

Over the course of the year, Quick-Step's fashion and flooring team explores the zeitgeist – taking inspiration from nature and tuning into the best design, culture and architecture happenings – to identify new trends before they hit the mainstream. In these pages, they present the four biggest floor colour trends to refresh interiors in 2014 and beyond as well as the expert tricks to making each style your own.



Mocca oak matt |
Palazzo | PAL1348

*An on-trend floor
is a stage on which
to express your own
style. Feel free to
experiment. It's all
about creating a
mood you'll want
to be immersed in.*

Havanna oak natural
(with saw cuts) |
Classic | QSM073

Australiana |
ARC | ABWAUS

THIS SEASONS
COLOUR TRENDS



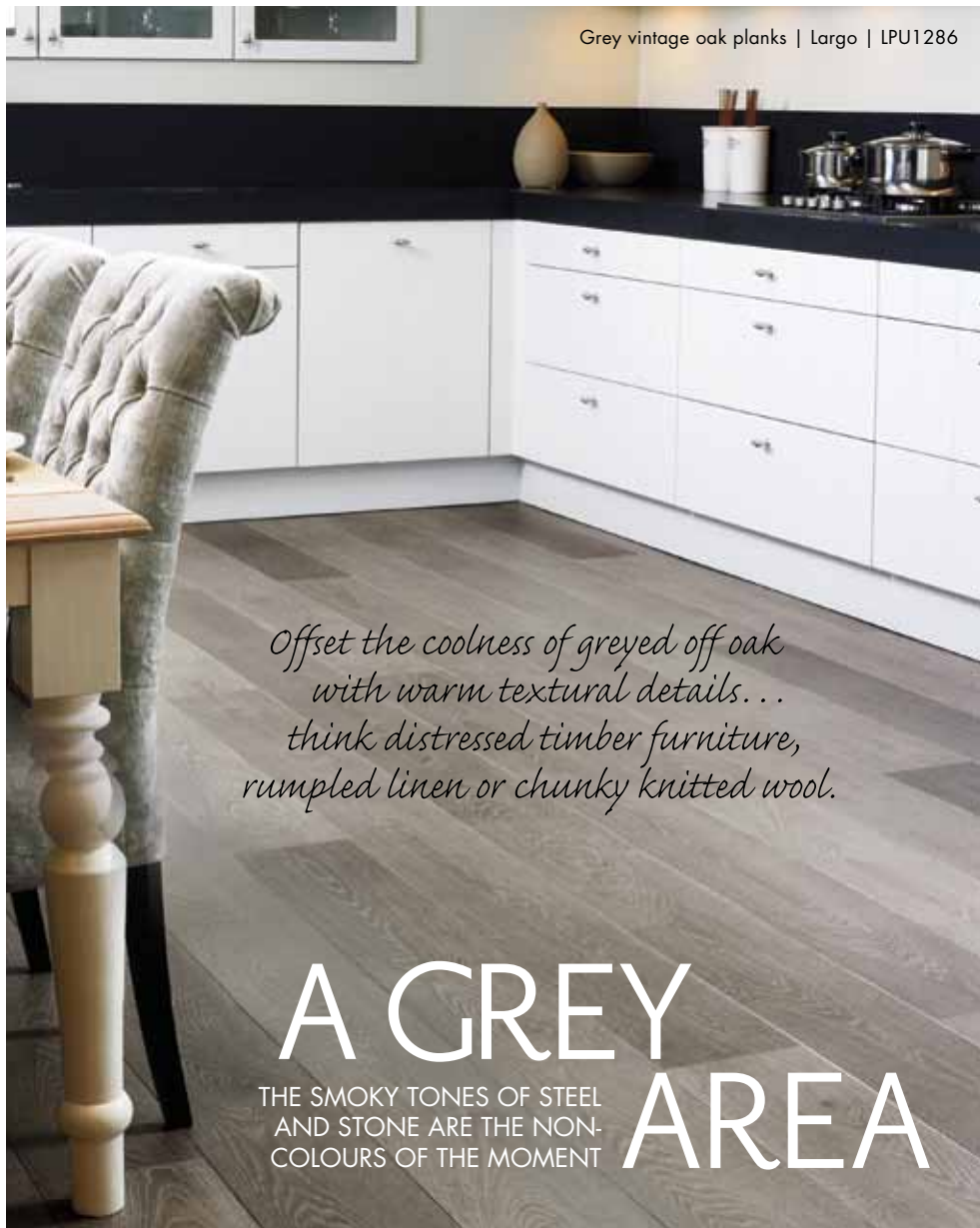
NEXT BIG THING

Texture is the buzzword for flooring in 2014 with sawcuts, reclaimed finishes and industrial details set to trend. Quick-Step's prolific Design Manager, Oke Nollet, says divinity is in the detail, "My philosophy is – small things make perfection but perfection is not a small thing," she explains.



Jarrah | Colonial | LPE11003

Grey vintage oak planks | Largo | LPU1286



Offset the coolness of greyed off oak with warm textural details... think distressed timber furniture, ruffled linen or chunky knitted wool.

A GREY AREA

THE SMOKY TONES OF STEEL AND STONE ARE THE NON-COLOURS OF THE MOMENT



TONAL TEXTURES

Silver, greige, charcoal or slate – we're all going gaga for the many shades of grey this year. This cool operator has a serene and architectural presence that modernises a home. As the industrial trend gathers pace, expect lighter tones on the grey spectrum to compliment all that concrete and steel while darker, warmer greys are set to add depth to intimate spaces.



RAMP UP THE ATMOSPHERE

Dark and mid-toned greys cast surfaces into the shadows, bringing architectural details, artworks and even people into the fore. These moody hues come to life under warm lighting. Use candles, lamps and pendants to create an ambient glow and cut crystal or glass vases to bounce light around.



Caribbean oak grey planks | Eligna Wide | UW1536

Old grey oak matt | Palazzo | PAL1346

Fossil oak matt | Palazzo | PAL1342

Old grey oak matt | Palazzo | PAL1346



Light grey oiled oak | Classic | QSM034

Bring samples home to observe how they react to the light at different times of day

WARM THE ROOM

Copper, brass and gold are the hottest materials in interiors right now. Keep the thermostat soaring with warm timber tones, tanned leather and atmospheric lighting. Marble and grey accents will add a little coolness into the mix.



Jarrah | Colonial | LPE 11003

SIMPLE STATEMENTS

Start with a floor you've fallen in love with, it will set the mood for the rest of your design.



Sydney blue gum | Colonial | LPE11002

Innovation is driving a new golden age of flooring with Quick-Step patented ScratchGuard and Scratch Resistant Technology leading the way.



HOT MATERIALS

Kempas 3 strip | ReadyFlor | MRF18K



ALL FIRED UP

SETTING INTERIORS ABLAZE, CHERRY AND COPPER TONES ARE THIS YEAR'S BALMIEST TREND

Warm tones are back and better than ever. On the flooring front, Australian red timbers are blazing the trail. These species become richer with time to fill spaces with unmatched ambience. There are all sorts of ways to introduce the fire of red into your home. Rooms with lots of natural light can take a deeper, richer red such as Jarrah while the blushing tones of Sydney Bluegum will switch on the lights in dark spaces.



Jarrah | Colonial | LPE11003

Sydney blue gum | Colonial | LPE11002

Jarrah 3 strip | ReadyFlor | GMRF18J

Natural | ARC | ABWNAT

Natural varnished oak |
Classic | QSM033

Blackbutt 1 strip |
ReadyFlor | GMRF18BBTSP

Champagne brut oak
oiled | Variano |
VAR1630

NATURAL CHARM

ENTER THE PERFECTLY IMPERFECT HOME
WHERE EARTHY TONES AND ROUGHED
UP TEXTURES CELEBRATE LAID-BACK BLISS

The natural look is founded on durable, sustainable basic materials. Take for example Quick-Step ARC Bamboo, which is sourced from dedicated, fast-growing plantations and is independently certified by GECA (Green Environmental Choice Australia) and FSC (Forest Stewardship Council).



Australiana | ARC | ABWAUS

THE NEW RUSTIC

Spotted gum, blackbutt, ash and oak are taking the stage as the antidote to too much screen time. Texture is key to the natural trend with matt, brushed finishes, taking the place of the usual gloss and cracks, wormholes and nail holes all adding to the story.



Pure oak matt |
Palazzo | PAL1341



The most coveted natural-toned floors are softened with a lick of smoke, lime or a hint of peeling off paint. It's all about rough luxe.

NATURE & NURTURE

Carry through the natural feel to the final details. Accessories in stone, felt, fur and leather feel warm and luxurious. Refined forms and clean lines will give the look a modern edge.



NATURAL
TONES

Platinum oaks and bleached teaks are taking over from pure white floors. These so-called new whites are inherent with tonal variation, which age gracefully with use.

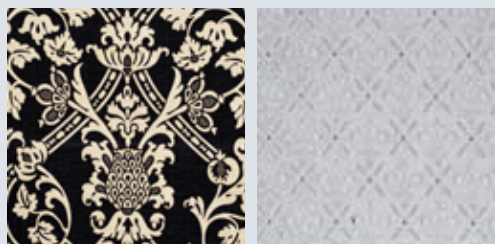


Black varnished oak planks | Eligna | UM1306



MODERN GLAMOUR

A black or white floor speaks of old hardwood floors that have been painted, buffed back, stained and polished over the decades. Build on this sense of history with elegant furniture in black, white or grey. Then just add a few playful patterns to bring the interior to life.



THE WORD FROM DESIGNEX

Laminate floors are upping their game featuring surface texture and natural variation reminiscent of the real thing. When Quick-Step showcased their laminate range alongside their timber collection at Designex this year, few designers could spot the difference.



Painted white oak oiled | Variano | VAR1629



Bleached white teak | Classic | GSM031

BLACK AND WHITE

THESE STRIKING CHAMELEON TONES LEAVE THE DOORS WIDE OPEN FOR REINVENTION

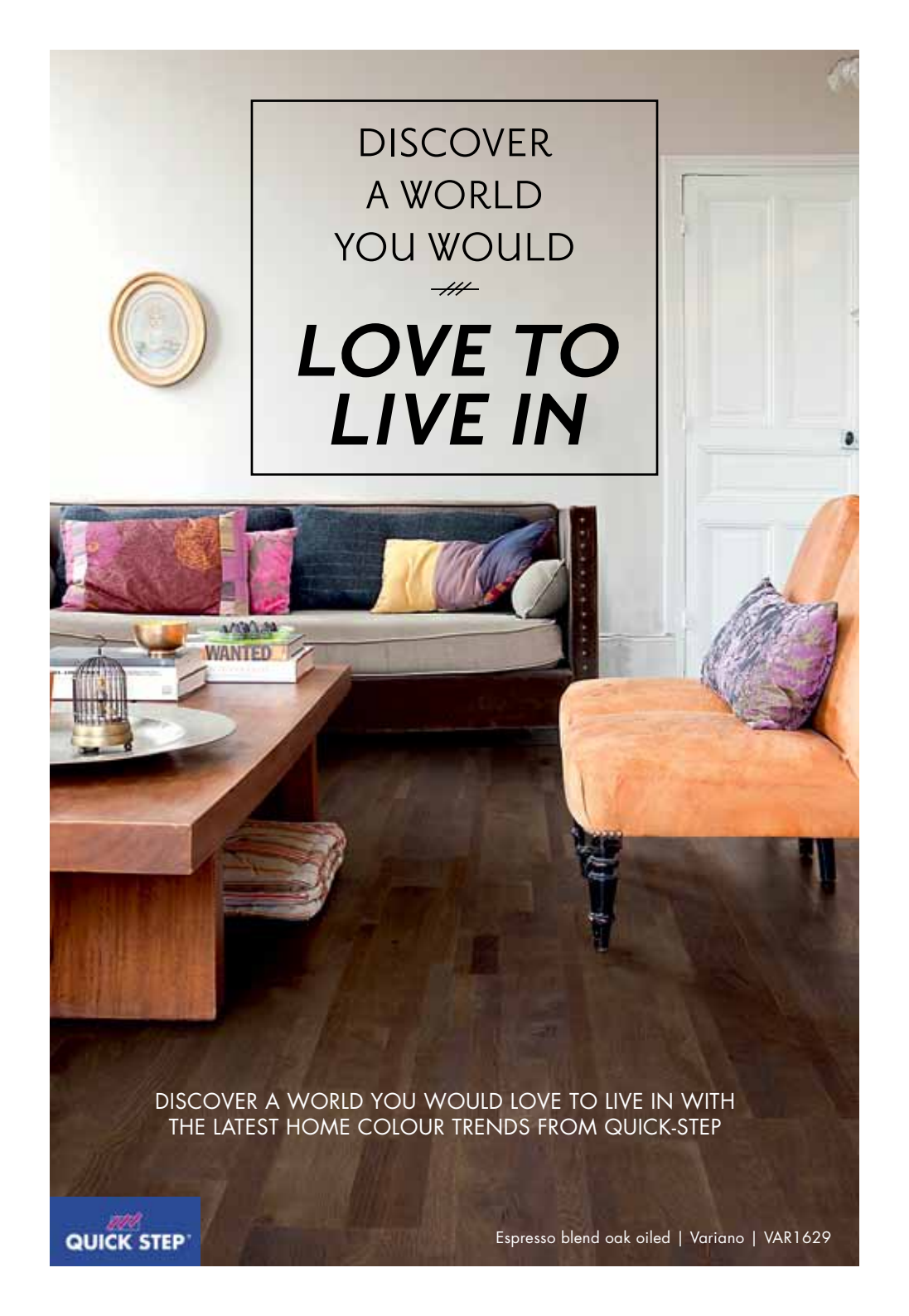
A monochrome palette is classic and there is reason it has such staying power; it's instantly stylish, perfectly polished and easy to reinvent with a few accessories. A white floor can be beautifully beachy or romantic and feminine – just be prepared to leave your shoes at the door. A black floor, on the other hand, is easy to live with and has a grounding effect on a home.



Java | ARC | ABWJAV

Painted white oak oiled | Variano | VAR1630

Wenge planks | Eligna | U1000



DISCOVER
A WORLD
YOU WOULD



**LOVE TO
LIVE IN**

DISCOVER A WORLD YOU WOULD LOVE TO LIVE IN WITH
THE LATEST HOME COLOUR TRENDS FROM QUICK-STEP


QUICK STEP

Espresso blend oak oiled | Variano | VAR1629