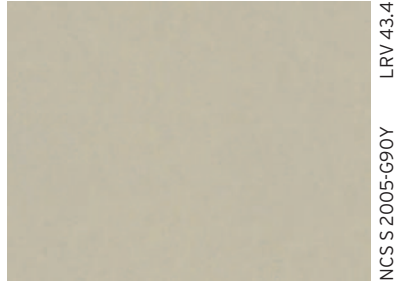




9844 Luna R10 w/r 9844

LRV 47.5
NCS S 1502-B



9840 Oatmeal R10 w/r 9840

LRV 43.4
NCS S 2005-G90Y



9849 Flaxen R10 w/r 9849

LRV 43.9
NCS S 0560-Y



9845 Storm R10 w/r 9845

LRV 26.4
NCS S 3502-B



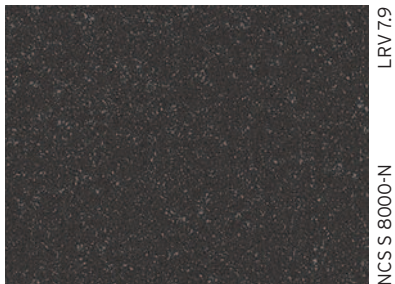
9841 Moleskin R10 w/r 9841

LRV 27.8
NCS S 3005-Y20R



9850 Meadow R10 w/r 9850

LRV 31.7
NCS S 2050-G90Y



9842 Jet R10 w/r 9842

LRV 7.9
NCS S 8000-N



9843 Taupe R10 w/r 9843

LRV 9.5
NCS S 7502-Y



9848 Burnt Orange R10 w/r 9848

LRV 24.0
NCS S 3040-Y40R



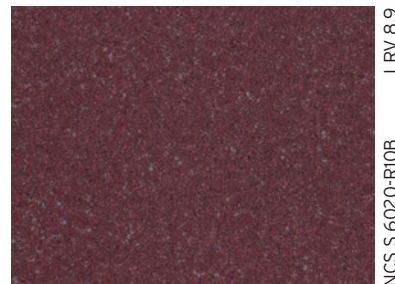
9852 Steel Blue R10 w/r 9852

LRV 9.9
NCS S 6020-B10G



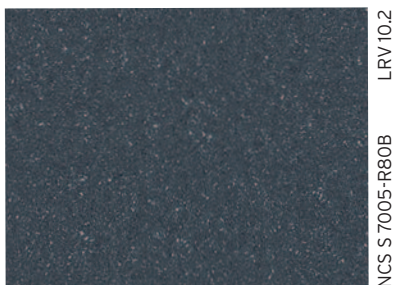
9851 Teal R10 w/r 9851

LRV 11.0
NCS S 6020-B70G



9847 Plum R10 w/r 9847

LRV 8.9
NCS S 6020-R10B



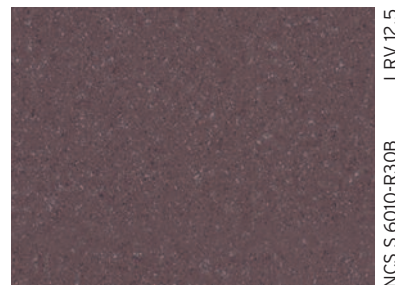
9854 Midnight R10 w/r 9854

LRV 10.2
NCS S 7005-R80B



9853 Woodland R10 w/r 9853

LRV 11.4
NCS S 6020-B50G



9846 Mulberry R10 w/r 9846

LRV 12.5
NCS S 6010-R30B



* Refer to BRE Global ratings on www.greenbooklive.com

The R values shown denote a ramp test result, which is an ex-factory measure of slip resistance.

The closest perceived NCS - Natural Colour System references are quoted for your convenience. For more information see www.ncscolour.com
Light Reflectance Values (LRV) - all colours are tested in accordance with BS8300:2009.





expona[®] FLOW
CONCRETE



LRV 40.2

NCS S 3000-N

9858 Light Grey Concrete

R10 w/r 9858



LRV 25.0

NCS S 3502-R

9855 Warm Concrete

R10 w/r 9855



LRV 21.9

NCS S 4500-N

9856 Cool Concrete

R10 w/r 9856



LRV 12.8

NCS S 6502-R

9857 Dark Grey Concrete

R10 w/r 9857



LRV 35.1

NCS S 2500-N

9860 Light Industrial Concrete

R10 w/r 9860



LRV 24.1

NCS S 4502-R

9859 Dark Industrial Concrete

R10 w/r 9859

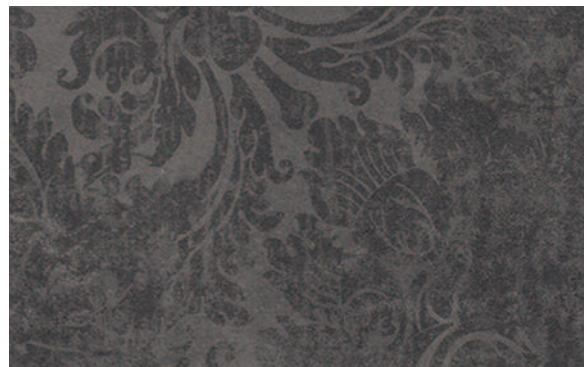


LRV 18.8

NCS S 5502-R

9861 Copper Ornamental

R10 w/r 9861



LRV 11.0

NCS S 7000-N

9862 Onyx Ornamental

R10 w/r 9862

w/r = weld rod

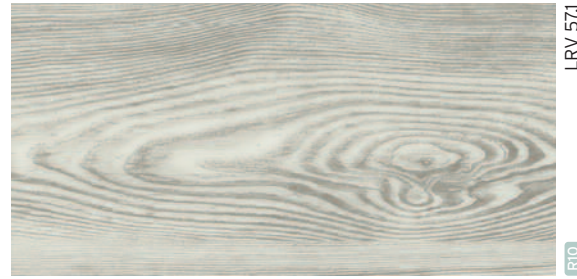


* Refer to BRE Global ratings on www.greenbooklive.com

The R values shown denote a ramp test result, which is an ex-factory measure of slip resistance.

The closest perceived NCS - Natural Colour System references are quoted for your convenience. For more information see www.ncscolour.com
Light Reflectance Values (LRV) - all colours are tested in accordance with BS8300:2009.





9834 White Pine plank w/l 166 x 1500mm w/r 9834

LRV 57.1



9828 Painted Chevron plank w/l 120 x 700mm w/r 9828

LRV 43.0



9823 English Oak plank w/l 200 x 1500mm w/r 9823

LRV 24.2



9838 Golden Pine plank w/l 166 x 1500mm w/r 9838

LRV 24.7



9869 Honey Beige w/r 9869

LRV 29.2



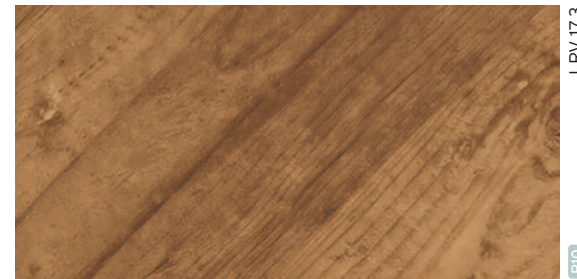
9826 Silver Oak plank w/l 200 x 1500mm w/r 9826

LRV 27.6



9829 Grey Weathered Chevron plank w/l 120 x 700mm w/r 9829

LRV 25.6



9830 Reclaimed Chevron plank w/l 120 x 700mm w/r 9830

LRV 17.3



9835 Bronzed Pine plank w/l 166 x 1500mm w/r 9835

LRV 14.1



9864 Autumn Rain w/r 9864

LRV 24.2



9863 Auburn w/r 9863

LRV 17.1



9825 Sun Bleached Oak plank w/l 200 x 1500mm w/r 9825

LRV 31.4



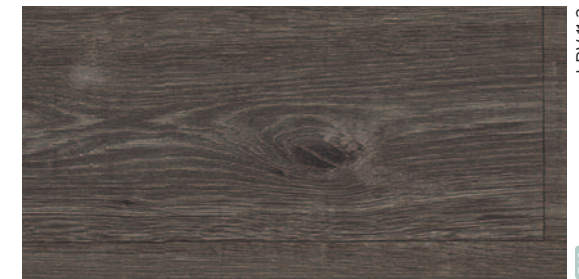
9833 Classic Limed Ash plank w/l 166 x 1500mm w/r 9833

LRV 48.7



9821 Honey Oak plank w/l 167 x 1500mm w/r 9821

LRV 22.0



9827 Smoked Oak plank w/l 200 x 1500mm w/r 9827

LRV 11.3



9867 Espresso w/r 9867

LRV 10.2



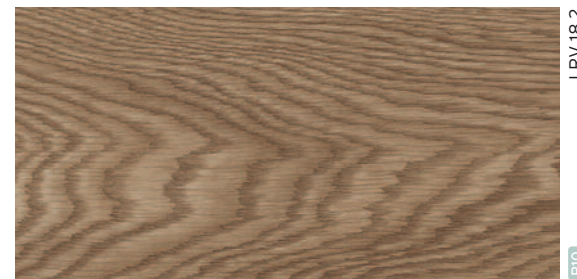
9832 Warm Limed Ash plank w/l 166 x 1500mm w/r 9832

LRV 34.1



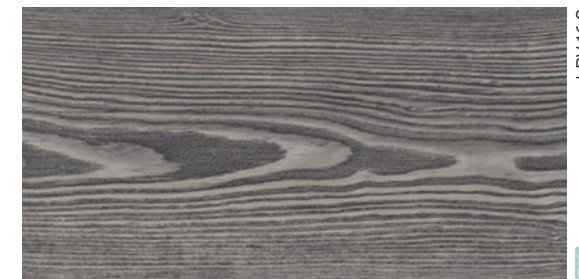
9839 Blond Pine plank w/l 166 x 1500mm w/r 9839

LRV 37.3



9822 Toasted Oak plank w/l 167 x 1500mm w/r 9822

LRV 18.2



9836 Silvered Pine plank w/l 166 x 1500mm w/r 9836

LRV 16.9



9868 Firelight w/r 9868

LRV 16.3



9865 Night Sky w/r 9865

LRV 12.5



9831 Roasted Limed Ash plank w/l 166 x 1500mm w/r 9831

LRV 27.3



9820 Blond Oak plank w/l 167 x 1500mm w/r 9820

LRV 27.7



9824 Aged Oak plank w/l 200 x 1500mm w/r 9824

LRV 8.1



9837 Charcoal Pine plank w/l 166 x 1500mm w/r 9837

LRV 12.8



9866 Raven w/r 9866

LRV 11.8

