

# Vulcan Series<sup>®</sup>



The Louvreclad Vulcan Series<sup>®</sup> provides a bespoke Trapezoid configuration and is both versatile and unique. A stunning alternative to traditional feature fins and screens, the unique profiles provide substantial sun screening of distinctive architectural character.

## Distinctive Features + Diverse Applications + Multitude of Benefits:

- Delivered to site ready-made for single-trade installation
- Concealed mounting in certain applications
- A selection of widths, configurations and mounting options

## Attention to Detail:

- Three distinct profiles available
- Maximum span depends on size of batten, location of building and local wind pressures.
- Designed and engineered for incidental live load



**SLIM SUN SHADING OPTION**



*Thinking outside for inside performance*

## DRAFT SPECIFICATION

Screens will be Louvreclad Vulcan Series® 89 x 19 / 163 x 45 / 125 x 20 [state size]. Blades will be mounted and spaced at \_\_\_\_\_ centre to centre.

### Base Material & Finish

Screens will be manufactured in [powder coated/anodised] aluminium finish in [state colour]

### Installation and Mounting

Installation and mounting details will be designed in accordance with proprietary systems and recommendations as designed and manufactured by Louvreclad Pty. Ltd. Phone: 1300 165 678 Email: sales@louvrecld.com

### Base Material Options

- Extruded Aluminium

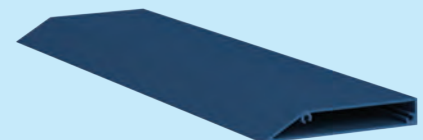
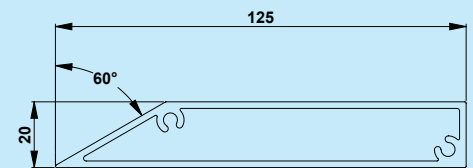
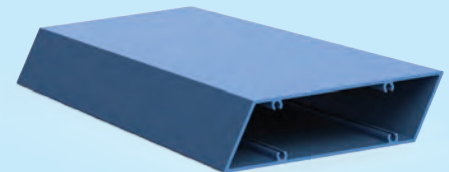
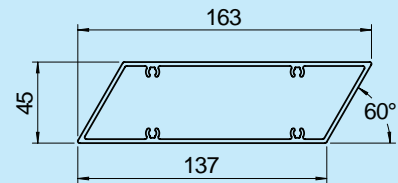
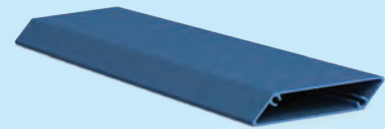
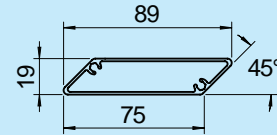
### Finishes Available

Choose from the following range of finishes:

- complete powder coated range
- complete anodised range

*Specialised coatings are also available on request.*

## PROFILES



## WOULD YOU LIKE TO KNOW MORE?

If you have any questions about this product, or if you would like to speak to a member of our expert team about how we can tailor a solution for you, call: **1300 165 678** or visit: [louvrecld.com](http://louvrecld.com)





**i WOULD YOU LIKE TO KNOW MORE?**

If you have any questions about this product, or if you would like to speak to a member of our expert team about how we can tailor a solution for you, call: **1300 165 678** or visit: **[louvreclad.com](http://louvreclad.com)**