



FROGLINE LIFELINE

SafetyLink® FrogLine Lifeline

Based on the sound engineering principles of the patented FrogLink anchor point, SafetyLink's all NEW patented FrogLine horizontal lifeline is in a class of its own.

The FrogLine's low profile design combines effortless energy absorbing capabilities into every intermediate, end and corner anchor, consequently incorporating the line energy absorbers into the system. This inventive approach ensures our FrogLine systems are always installed with the maximum energy absorption possible regardless of the line length.

The SafetyLink FrogLine's curved profile, while smart in its simplicity provides the initial shock absorbing capabilities in the event of a fall. Further extension is provided in the serpentine shapes which progressively dissipate and absorb the energy whilst retaining their strength. This duality of function is why the FrogLine design surpasses all its competitors in the field.

Innovation and attention to detail is always foremost in our minds when designing new products. The FrogLine's lifeline demonstrates this with its intricate tab features. These tabs provide stability whilst the line is in tension, in addition to this they act as a fall indicator when removed from their initial position.

Designed with a variety of interchangeable components, the FrogLine is capable of being installed into a multitude of situations including metal roof sheeting, purlins, steel beams and concrete structures.

The FrogLine has been rigorously tested and manufactured in accordance with Australia and New Zealand Standard AS/NZS 1891.2 and European EN 795:2012, CEN/TS 16415:2013.



FrogLine Manual
Concrete



FrogLine Manual
Retro



FrogLine Manual
Steel



FrogLine Manual
Surface Mount

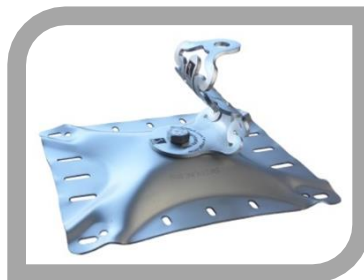
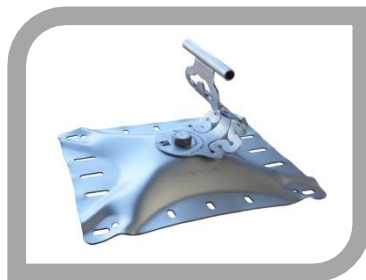


Installation
Video

Technical Specifications

Component product codes:

PRODUCT CODE	DESCRIPTION
STAT.FROGSAL001	FrogLine AL SurfaceLink Intermediate Anchor
STAT.FROGSAL001+FIXINGS	FrogLine AL SurfaceLink Intermediate Anchor+FIXINGS
STAT.FROGSAL002	FrogLine AL SurfaceLink End Anchor
STAT.FROGSAL002+FIXINGS	FrogLine AL SurfaceLink End Anchor+FIXINGS
STAT.FROGSAL003	FrogLine AL SurfaceLink Corner Anchor
STAT.FROGSAL003+FIXINGS	FrogLine AL SurfaceLink Corner Anchor+FIXINGS
STAT.FROGSUR001	FrogLine SS SurfaceLink Intermediate Anchor
STAT.FROGSUR001+FIXINGS	FrogLine SS SurfaceLink Intermediate Anchor + FIXINGS
STAT.FROGSUR002	FrogLine SS SurfaceLink End Anchor
STAT.FROGSUR002+FIXINGS	FrogLine SS SurfaceLink End Anchor + FIXINGS
STAT.FROGSUR003	FrogLine SS SurfaceLink Corner Anchor
STAT.FROGSUR003+FIXINGS	FrogLine SS SurfaceLink Corner Anchor + FIXINGS
STAT.FROGCON001	FrogLine ConcreteLink Intermediate Anchor
STAT.FROGCON002	FrogLine ConcreteLink End Anchor
STAT.FROGCON003	FrogLine ConcreteLink Corner Anchor
STAT.FROGRET001	FrogLine RetroLink Intermediate Anchor
STAT.FROGRET002	FrogLine RetroLink End Anchor
STAT.FROGRET003	FrogLine RetroLink Corner Anchor
STAT.FROGSTE001	FrogLine Steel Mounted Intermediate Anchor
STAT.FROGSTE002	FrogLine Steel Mounted End Anchor
STAT.FROGSTE003	FrogLine Steel Mounted Corner Anchor
STAT.FIXINGS	SurfaceLink FIXINGS per anchor; 10 x Rivets & 2 x 14-10 75mm Screws
STAT.CABLE001	Cable: per metre, Stainless Steel 8mm dia, 7x7 wire rope.
STAT.CABLE001.01	ROLL Cable: 305m Stainless Steel 8mm dia, 7x7 wire rope.
STAT.SHUTL003	SafetyLink FrogLine Shuttle with Karabiner
STAT.TENSR001	Swaged Tensioner
STAT.TERMN001	Swaged Termination
STAT.TENSR002	Swageless Tensioner
STAT.TERMN002	Swageless Termination
STAT.TENSR004	Swageless Tensioner with Tension Indicator
STAT.TENSR003	Crimped Tensioner*: (for use with hand crimper)
STAT.TERMN003	Crimped Termination: (for use with hand crimper)
STAT.TERMN004	Crimped Termination: Eye Terminal (for use with crimping tool)
STAT.TENSR005	Crimped Tensioner with Tension Indicator: (for use with hand crimper)





FROGLINE LIFELINE

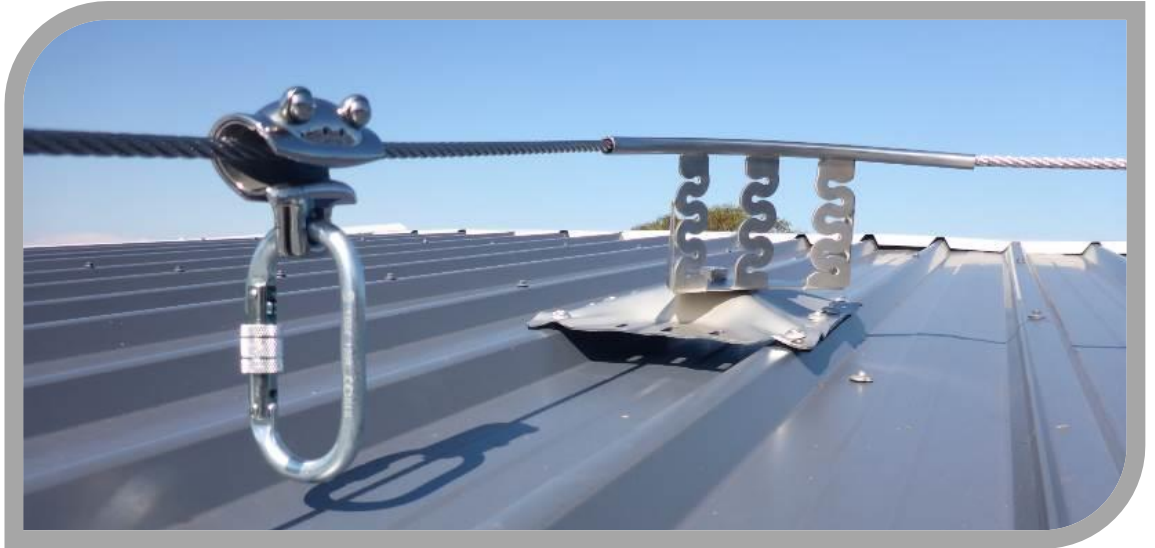
Compliance statement:

The SafetyLinks FrogLine Lifeline system have been tested to and passed the following standards:

- Australia and New Zealand Standard AS/NZS 1891.2
- European EN 795:2012
- CEN/TS 16415:2013

Maintenance and inspection requirements:

SafetyLinks FrogLine Lifeline systems shall be subject to periodic inspections and certification. Inspection and certified must be carried out every 12 months or less if required by a regulator. These inspections must be completed by a competent person. For inspection requirements refer to SafetyLinks Installation Handbooks and Certification Checklists.



Load ratings:

The building or structure for the anchorages must be assessed by an engineer, unless it is clear to a competent person that the structure is adequate.

- Maximum user per system is Four (4).
- Maximum person per span is Two (2).
- See system information for site specific use.

Surface Mounted Anchors must be positioned no less than 2 metres from the edge on KlipLok roofs.

Installation:

⚠ If any doubt exists as to the strength of the structure an engineer should make the assessment.

STRUCTURE	MINIMUM SPECIFICATIONS	CRITERIA
Surface Mounted	Minimum sheet gauge 0.42mm.	<ul style="list-style-type: none"> - Intermediates must only be spaced at a maximum of 10 metres apart. - Surface Mounted Anchor Plates must be installed on the roof sheeting screw/attachment lines or alternately the roof sheeting laps/joins only.
Purlin Mounted	Minimum steel purlin gauge 1.2mm.	<ul style="list-style-type: none"> - Intermediates must only be spaced at a maximum of 10 metres apart.
Concrete Mounted	To be assessed.	<ul style="list-style-type: none"> - Intermediates must only be spaced at a maximum of 10 metres apart.
Steel Mounted	Minimum steel purlin gauge 1.2mm.	<ul style="list-style-type: none"> - Intermediates must only be spaced at a maximum of 10 metres apart.

⚠ For complete installation guides and criteria refer to [SafetyLink's Installation Handbook](#).

Version 01.17



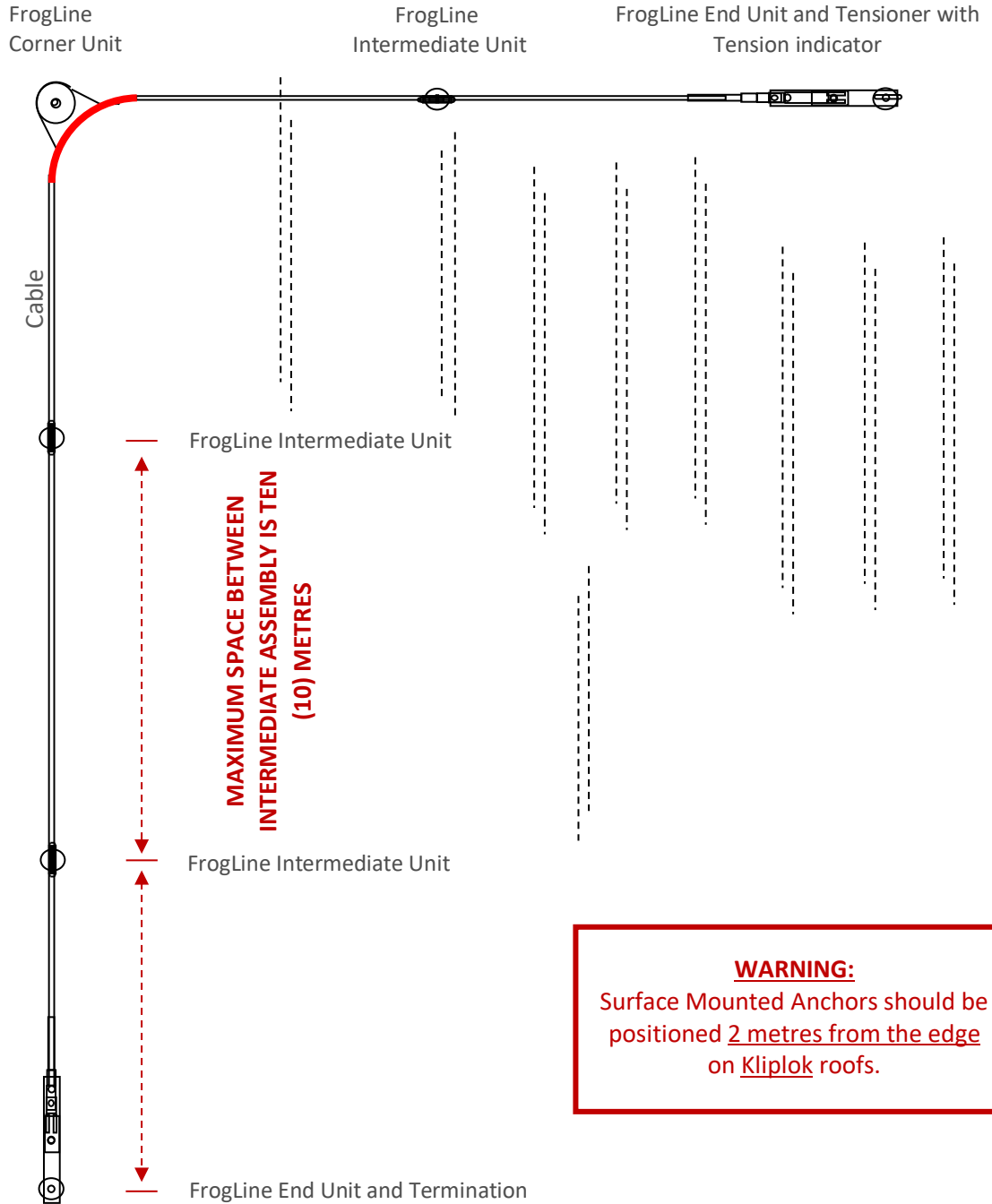
HORIZONTAL LIFELINE SYSTEM LAYOUT

This is a guide only

All working at heights safety procedures must be complied with when installing SafetyLink height safety systems. For more information refer to your state or territories current legislation, regulations, policies and codes of practices.



Horizontal height safety lifelines must only be installed and used by competent people with relevant current height safety qualifications.



WARNING:
Surface Mounted Anchors should be positioned 2 metres from the edge on Kliplok roofs.

SAFETYLINK HEIGHT SAFETY SYSTEMS MUST ONLY BE INSTALLED AS PER OUR INSTALLATION GUIDES, TO STRUCTURES AS SPECIFIED IN THE INSTALLATION MANUAL FOR EACH PRODUCT. SHOULD ANY DOUBT EXIST IN REGARDS TO THE STRUCTURES INTEGRITY AN ENGINEER SHOULD BE CONSULTED.



COPYRIGHT TERMS AND CONDITIONS



Copyright in the material contained on this disc/email belongs to SafetyLink Pty Ltd. You are authorised to reproduce this material subject to the following conditions:

1. No changes to the material may be made without SafetyLink Pty Ltd's prior written consent, which consent may be withheld, granted, or granted subject to conditions in SafetyLink Pty Ltd's discretion. Change includes any alteration, addition or deletion to the material or a part of the material that you reproduce.
2. You must ensure that any material you reproduce is marked "Copyright – SafetyLink Pty Ltd 2006".
3. Where you reproduce parts only of the material that must not cause the part reproduced to be misleading in any way or omit any important safety information.
4. You indemnify SafetyLink Pty Ltd against any claim arising out of your reproduction of the material on this disc/email or any part of it.
5. SafetyLink Pty Ltd can terminate this authority to reproduce this material on 7 day's notice in writing to you at your last known business address, for any reason. You must return this disc/email to SafetyLink Pty Ltd immediately after such a termination takes effect.

If you do not accept these conditions please return the disc/email to SafetyLink Pty Ltd. Your retention of the disc/email will otherwise be evidence of your acceptance of these conditions.

Patents

SafetyLink Pty Ltd has a multitude of patents, patents pending, design applications, trademarks and copyrighted documents both lodged and issued.

Should you wish to know the progress of our intellectual property on a specific product please email us on ip@heightsafety.com.au and quote the product code.



Anchor
Catalogue



Anchor
Installation Guide



Lifeline
Catalogue



Lifeline
Installation Guide



Ladder
Catalogue



Ladder
Installation Guide



FrogLink
Install Video



TileLink
Install Video



heightsafety.com
see website for
more videos &
information