



Rhino Linings[®]
PREMIUM PROTECTION

FLOORING PRODUCT GUIDE



1300 887 780 or +61 7 5585 7000



info@rhinolinings.com.au



www.rhinolinings.com.au

Why Rhino Linings®?

Since 1988 Rhino Linings has been the leading worldwide manufacturer of premium protective coatings.

We manufacture and distribute spray applied protective coatings for commercial and industrial applications, as well as specialist flooring coatings for large scale warehousing, commercial buildings and the private household market.

In addition, we train and technically support our network of Rhino applicators. The technical advantages this brings are significant and cannot be matched by system importers and distributors.

Australian Made Protection. Rhino's spray applied polyurea and polyurethane coatings are superior, long lasting and durable.

For more information contact Rhino Linings Australasia Head Office on +61 7 5585 7000 or visit www.rhino linings.com.au

Contents

Click Page Title to Jump to That Page

2. [Rhino ArmaFloor® 200 SC \(4:1 ratio\) - 100% Solids Epoxy Priming System](#)
3. [Rhino ArmaFloor® 300 \(3:1 ratio\) - Water Based Epoxy System](#)
4. [Rhino ArmaFloor® 400 UHS \(3:1 ratio\) - High Solids, Heavy Duty Epoxy Flooring System](#)
5. [Rhino ArmaFloor® 400 UVS \(2:1 ratio\) - 100% Solids, Clear Epoxy](#)
6. [Rhino ArmaFloor® 500 AU \(1:1 ratio\) - Polyaspartic Decorative Flooring System](#)
7. [Rhino Metal Fusion® \(2:1 ratio\) - 3D Metallic Epoxy System](#)
8. [Rhino ArmaFloor® WB Urethane \(4:1 ratio\) - Water Based Polyurethane Coating](#)
9. [Rhino Thinners - Specifically for Rhino ArmaFloor® Products](#)
9. [Rhino Concrete Repair \(1:1 ratio\) - Urethane Crack Repair System](#)
10. [Rhino ArmaFloor® Standard Colour Chart](#)
10. [Rhino Linings® Flake Flooring Colour Chart](#)
11. [Rhino Linings® Metal Fusion Colour Chart](#)



Rhino ArmaFloor® 200SC (4:1 ratio)

Description

ArmaFloor® 200SC is a two component, solvent free, superior quality epoxy resin system with standard and rapid curing options. AF200SC® can be filled with various and suitable aggregates to provide a range of applications including scratch or skim coat and coving mix. This product can be further extended with fillers to achieve a high build epoxy mortar with greater compressive and tensile strengths than concrete for repairing and re-profiling of damaged concrete floors or construction joints. Ideal for priming prior to the application of other ArmaFloor® epoxy flooring systems including ArmaFloor® 400UHS and Metal Fusion.

Features and Benefits

- 80 micron - 20mm with fillers.
- Standard and rapid versions.
- Excellent primer for the AF400UHS® and Rhino® CS Metal Fusion range of flooring products.
- Low VOC's (Volatile Organic Compounds).
- Superior adhesion qualities.

Typical Uses

- Floor coatings in - Garage Floors, Laboratories, Restaurants, Warehouses, Airplane Hangars, Entry and Lobby Areas.
- Creates a durable, seamless primer which conforms to any shape and size. Fills holes.
- High build and coving applications.

The ArmaFloor® 200SC system has been colour enhanced for ease of identification of working time which allows easy viewing of any air entrapment and ensures that the hardener has been fully mixed with the Resin. Mixing ratio is by VOLUME (not weight) and should be 4 parts A-side (Resin) and 1 part B-side (Hardener). Typically applied in one scratch or skim coat, total coating thickness is typically 150 microns. ArmaFloor® 200SC can also be used as a high build or self levelling system by adding fillers.

www.rhinolinings.com.au | 1300 887 780 or +61 7 5585 7000 | info@rhinolinings.com.au

[Back to Contents](#)



Rhino ArmaFloor® 300 (3:1 ratio)

Description

ArmaFloor® 300 is a pigmented, waterborne, two-component, fast curing, epoxy coating system designed as a durable coating for floors and other applications. High toughness and strength are characteristics of this coating system. Formulated with low viscosity, this ambient cured resin system is gray or white in colour and is ideal for floors where speed of application is an important factor. ArmaFloor® 300 bonds to virtually all substrates and can be applied using standard application equipment.

Features and Benefits

- Fast cure, rapid turnaround time.
- Return to service within 24 hours.
- Excellent abrasion and impact resistance.
- Excellent chemical resistance.
- Low VOC's.
- Environmentally friendly.
- Excellent durability.
- Add Rhino Alox for an anti-slip finish.

Typical Uses

- Garage Floors.
- Laboratories.
- Restaurant Floors.
- Aeroplane Hangars.
- Entry and Lobby Areas.
- Equipment and more.

ArmaFloor® 300 is typically applied in two wet coats @ 100 - 150 microns per coat with a total dry film thickness of 125 microns. Coverage is approximately 1 ltr = 5 sqm per ltr per coat. See a Rhino® representative for your specific application. Colour options include: Light Grey or White.

www.rhino linings.com.au | 1300 887 780 or +61 7 5585 7000 | info@rhino linings.com.au

[Back to Contents](#)



Rhino ArmaFloor® 400UHS (3:1 ratio)

Description

ArmaFloor® 400UHS is a two component, solvent free, high solids, heavy duty, high build, epoxy flooring system available in 13 colours. AF400UHS® is a heavy duty coating offering excellent abrasion resistance. It is recommended for use in a number of industries including food and beverage, warehousing facilities, automotive and manufacturing. With high chemical resistant properties, AF400UHS® provides protection against a range of diluted acids, solvents and alkali spills and mechanical abrasion from forklifts, trucks and trailers.

Features and Benefits

- Provides excellent chemical resistance to a range of diluted acids, alkali's and solvents.
- The treated surface eliminates dusting and is easy to clean.
- The finished surface appearance is of an "orange peel" nature.
- The surface is hygienic due to the seamless application and bacterial growth is eliminated due to the ease of cleaning.
- Heavy duty, durable coating offering excellent abrasion resistance.
- Add Rhino Alox for an anti-slip finish.

Typical Uses

- Retail shops & commercial applications.
- Food processing plants.
- Vehicle workshops.
- Construction & Mining industry.
- Warehouses.
- Abattoirs.
- Residential garages and more.

The ArmaFloor® 400UHS is typically applied in two wet coats at 150 - 200 microns per coat (over AF200SC) with a total dry film thickness of 300 - 350 microns. Coverage is approximately 1 ltr = 5 sqm per coat. AF400UHS® is available in pre-manufactured light grey or neutral, with 15 standard pigments available (see colour chart near end of book).

www.rhinolinings.com.au | 1300 887 780 or +61 7 5585 7000 | info@rhinolinings.com.au

[Back to Contents](#)



Rhino ArmaFloor® 400 UVS (2:1 ratio)

Description

ArmaFloor® 400 UVS is a high gloss, internal, 100% solids heavy duty epoxy clear finishing coat. For use as a clear coating system over various floor finishes in Industrial, commercial or residential applications.

Features & Benefits

- Excellent adhesion to prepared substrates.
- Dries Clear.
- Low viscosity.
- Simple mix ratio 2:1 by volume.
- 100% Solids.
- Add Rhino Alox for an anti-slip finish.
- Low to zero VOC's.
- Gloss finish.
- Can be thinned with Xylene.
- Standard, rapid and slow hardeners available.
- Can be applied up to 1mm thick.

Typical Uses

Excellent durability and aesthetics for floor coatings including:

- Retail shops and commercial applications.
- Food processing plants.
- Vehicle workshops.
- Construction and mining industry.
- Warehouses and workshops.
- Chemical and oil industry.

Over:

- Polymer based cement screeds.
- Cement based self levelling systems.
- Vinyl and Acrylic paint flakes.
- Coloured Quartz.
- Self levelling epoxies and coatings.
- Terrazzo & synthetic Terrazzo.
- Ground exposed aggregate flooring.
- Only appropriate floor cleaners should be used (contact Rhino Linings Technical Dept for details).

www.rhino linings.com.au | 1300 887 780 or +61 7 5585 7000 | info@rhino linings.com.au

[Back to Contents](#)



Rhino ArmaFloor® 500 AU Polyaspartic (1:1 ratio)

Description

ArmaFloor® 500 AU is a two component, rapid curing polyaspartic coating system that is both durable and decorative making it ideal for virtually any interior and exterior concrete surface for residential, commercial and industrial flooring applications. Formulated with aliphatic chemistry, ArmaFloor® 500 AU is both colour fast and UV stable, allowing it to take UV exposure without the colour shift seen with other coating systems such as epoxies. The 1:1 mix ratio system has sufficient pot life to be rolled or brushed onto the substrate. ArmaFloor® 500 AU is a scientifically formulated, multi-layered polyaspartic that can be quickly installed. This system will have your customers back on their floor the very next day.

Features and Benefits

- Fast cure, rapid turnaround.
- Robust application window.
- Excellent abrasion, impact & chemical resistance.
- Excellent UV resistance & high gloss characteristics.
- Low VOC's.
- Add Rhino Alox for an anti-slip finish.

Typical Uses

- Garage Floors.
- Driveways.
- Office Floors.
- Patios.
- Restaurants.
- Shopping Centres.
- Showroom Floors.
- Warehouses.
- Kitchen Floors and more.

If used as a solid colour coating, 2 - 3 pigmented coats are required. Total thickness for a flake floor finish (3 x coats) is typically 300 - 500 microns. Coverage is 5 sqm per litre per coat - possibly slightly less on the base coat to gain coverage on some more porous substrates. Colour options include clear and 15 standard pigments (see Colour chart near end of book for more details). Decorative flake and quartz are also available (see Flake Chart near end of book for more details).

www.rhinolinings.com.au | 1300 887 780 or +61 7 5585 7000 | info@rhinolinings.com.au

[Back to Contents](#)



Rhino[®] Metal Fusion (2:1 ratio)

Description

Metal Fusion is an elegant, exotic floor coating designed to bring a seamless showroom finish to any concrete floor. With a three dimensional look, it gives ordinary floors extraordinary colour and depth. The product is a two component, 100% solids, epoxy formulation consisting of a high performance bisphenol, an epoxy resin blend combined with cycloaliphatic curing agent. Metal Fusion is a versatile, high grade epoxy material that adheres well to any concrete surface with minimal application time frame.

Features and Benefits

- 100% solids, zero VOC's.
- Low viscosity.
- Excellent adhesion. Bonds well to primed concrete and other substrates.
- Self levelling.
- Resistant to amine blush.
- Resistant to exudation.
- Will not crystallise, even in cold environments.

Typical Uses

- Living rooms.
- Kitchens.
- Bathrooms.
- Retail stores.
- Offices and lobby areas.
- Restaurants.
- Showroom floors.
- Hair salons and more.

Metal Fusion is available in 11 standard metallic colours and packaged in 11.35 ltr kits (7.57 ltr & 3.78 ltr) for convenient use in a 2:1 mixing ratio (2 parts A to 1 part B). Mix up no more than can be used in a 15 minute time period. Always blow the entire surface to be coated, including all edges, corners and under walls to be sure no loose debris will come out during the Metal Fusion application. Loose debris can become embedded in the Metal Fusion if not removed ahead of time.

www.rhino linings.com.au | 1300 887 780 or +61 7 5585 7000 | info@rhino linings.com.au

[Back to Contents](#)



Rhino Armafloor® WB Urethane (4:1 ratio)

Description

Rhino ArmaFloor® WB Urethane 4:1 is a 2-component waterborne polyurethane solution that produces a highly durable and clear coating in both matt and gloss for both indoor and outdoor applications. Rhino ArmaFloor® WB Urethane 4:1 has excellent resistance to chemicals and stains, and contains a UV stabiliser to improve protection against UV light. It is ideally suited for overcoating/finishing clear and pigmented floor coatings on a wide range of substrates, such as prepared concrete, masonry, pavers, wood and slate sealing.

Features and Benefits

- Excellent chemical and stain resistance.
- Excellent wear resistance.
- Excellent scratch resistance.
- Easy application.
- Easy clean surface.
- Produces a hard, yet clear film.
- Add UV absorber improved protection against UV light.
- Excellent resistance to weathering.
- Low odour and wash up in water.
- Non-yellowing.
- Add Rhino Alox for an anti-slip finish.

Rhino ArmaFloor® WB Urethane 4:1 is the ideal low odour top coat for areas that require maximum gloss retention, ease of cleaning and resistant to heavy traffic.

Typical Uses

- Hospitals.
- Concrete counter tops.
- High traffic retail areas.
- Aircraft hangars.
- Automotive repair facilities.
- Garage floors and more.

www.rhinolinings.com.au | 1300 887 780 or +61 7 5585 7000 | info@rhinolinings.com.au

[Back to Contents](#)





Rhino® Thinners

Description

Rhino ArmaFloor® Thinners is a fast evaporating thinner with low viscosity and physical properties best suited to high solids solvent-borne systems. Designed to aid in thinning the Rhino ArmaFloor® epoxy (non-water based), and polyaspartic range of flooring systems allowing smoother roll down of the coating when working in high humidity conditions.

Features and Benefits

Rhino ArmaFloor® Thinners can be used to lower viscosity which will help improve the self-levelling characteristics of the liquid chemistry and increase the flow rate of the final coat over chip or quartz flooring, as well as solid colour systems.

Typical Uses

Its primary use is for top or final coat applications. Whenever using thinning agents, do not over dilute the mixture. This may cause a degradation of the coating appearance. 10% Max.

[Back to Contents](#)



Rhino® Concrete Repair

(1:1 ratio)

Description

Rhino® Concrete Repair is an advanced urethane chemistry designed for rapid concrete repair (cure time 15 minutes). The unique liquid properties allow the material the versatility to repair hairline and large cracks as well as spalls and pop-outs without any difficulties.

Features and Benefits

The material can be trowelled to a feather-edge using conventional concrete application tools. With its low viscosity, Rhino® Concrete Repair can penetrate deep into cracks providing excellent adhesion which allows it to become a permanent repair for non-moving concrete.

Typical Uses

Rhino® Concrete Repair can be mixed with aggregate to repair large holes or a deeply spalled area. The temperature versatility of Rhino® Concrete Repair allows it to be an excellent choice for both interior and exterior repairs, it can also be used in freezers.

[Back to Contents](#)

Rhino ArmaFloor® Standard Colour Chart

ArmaFloor 400UHS and ArmaFloor 500AU
Available in 500ml containers for AF500AU and 750ml for AF400UHS



Rhino Grey
(AF500 only)



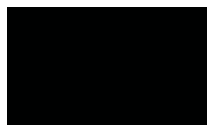
Rhino Terracotta
(AF500 only)



Rhino Beige
(AF500)



Beige
(AF400UHS)



Black
(AF500AU & AF400UHS)



White
(AF500AU & AF400UHS)



Light Grey (N35)
(AF500AU & AF400UHS)



Mid Grey (N52)
(AF500AU & AF400UHS)



Bridge Grey (N44)
(AF500AU & AF400UHS)



Koala Grey (N45)
(AF500AU & AF400UHS)



Light Box Grey (N33)
(AF500AU & AF400UHS)



Basalt (N54)
(AF500AU & AF400UHS)



Signal Red (R13)
(AF500AU & AF400UHS)



Harbour Blue (B24)
(AF500AU & AF400UHS)



Golden Yellow (Y14)
(AF500AU & AF400UHS)



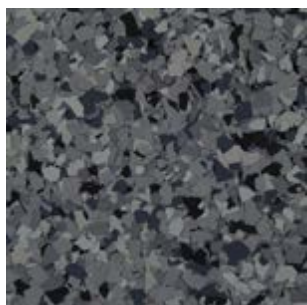
Emerald Green (G13)
(AF500AU & AF400UHS)

* Custom colours are no longer available for all ArmaFloor products.
* AF300 is available in Light Grey and White only.
* AF200 is available in Clear only.

DISCLAIMER: Every effort has been made to accurately match the colours represented on this colour chart to those colours represented in the Australian AS2700 Colour Chart. Rhino Linings Australasia Pty Ltd advises that there may be significant colour variations between the two. Please note that colour representations depicted here may vary from actual surface colours due to variations of different printers and computer screens the market (including - make, model, resolution, contrast and the brightness control settings) in much the same way a photocopy or scan will differ from an original image.

[Back to Contents](#)

Rhino Linings® 1/4" Flake Flooring Colour Chart



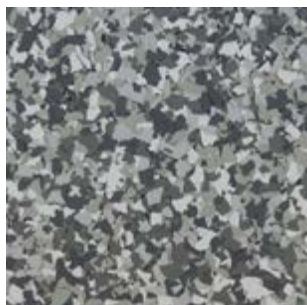
Zambezi
(AF20615)



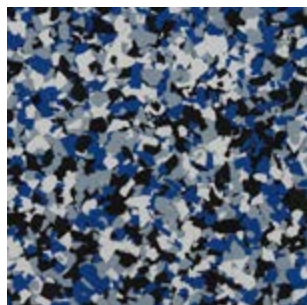
Congo
(AF20611)



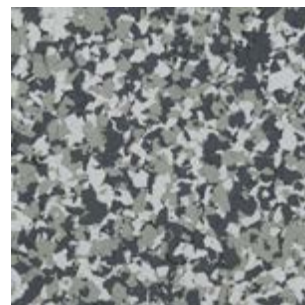
Mali
(AF20613)



Etna
(AF20612)



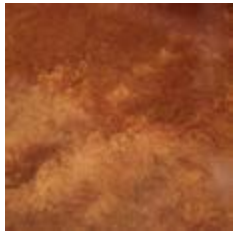
Blue Nile
(AF20610)



Sahara
(AF20614)

DISCLAIMER: Every effort has been made to accurately match the colours represented on this colour chart. Rhino Linings Australasia Pty Ltd advises that there may be significant colour variations. Please note that colour representations depicted here may vary from actual surface colours due to variations of different printers and computer screens the market (including - make, model, resolution, contrast and the brightness control settings) in much the same way a photocopy or scan will differ from an original image.

Rhino Linings® Metal Fusion Colour Chart



Antique Copper



Antique Gold



Blue Flame



Citrus Fire



Crimson



Meta Mocha



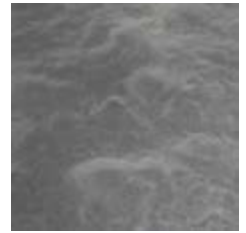
Metallic Jade



Meteorite



Steel Blue



Sterling



Storm Gray

DISCLAIMER: Every effort has been made to accurately match the colours represented on this colour chart. Rhino Linings Australasia Pty Ltd advises that there may be significant colour variations. Please note that colour representations depicted here may vary from actual surface colours due to variations of different printers and computer screens the market (including - make, model, resolution, contrast and the brightness control settings) in much the same way a photocopy or scan will differ from an original image.

www.rhino linings.com.au | 1300 887 780 or +61 7 5585 7000 | info@rhino linings.com.au

[Back to Contents](#)

