

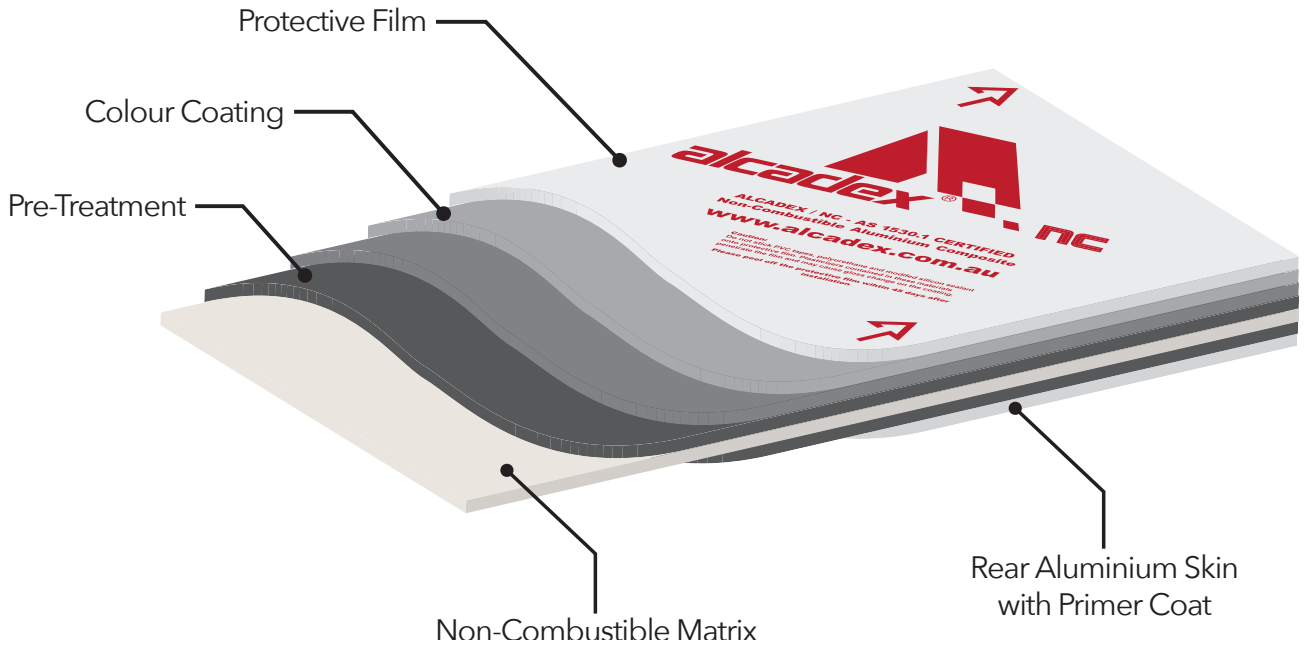


Product Introduction



ALCADEX®/NC

AS1530.1 Certified



Introduction

Changes to the Building Code of Australia, together with recent fire-related incidents in Australia and around the world, have led us to create an innovative aluminium composite material (ACM) to comply with Australian and international standards.

ALCADEX/NC - An innovative non-combustible ACM

Extensive testing has been undertaken in Australia by CETEC - a NATA accredited test laboratory - confirming that ALCADEX/NC is a non-combustible material compliant with AS1530.1.

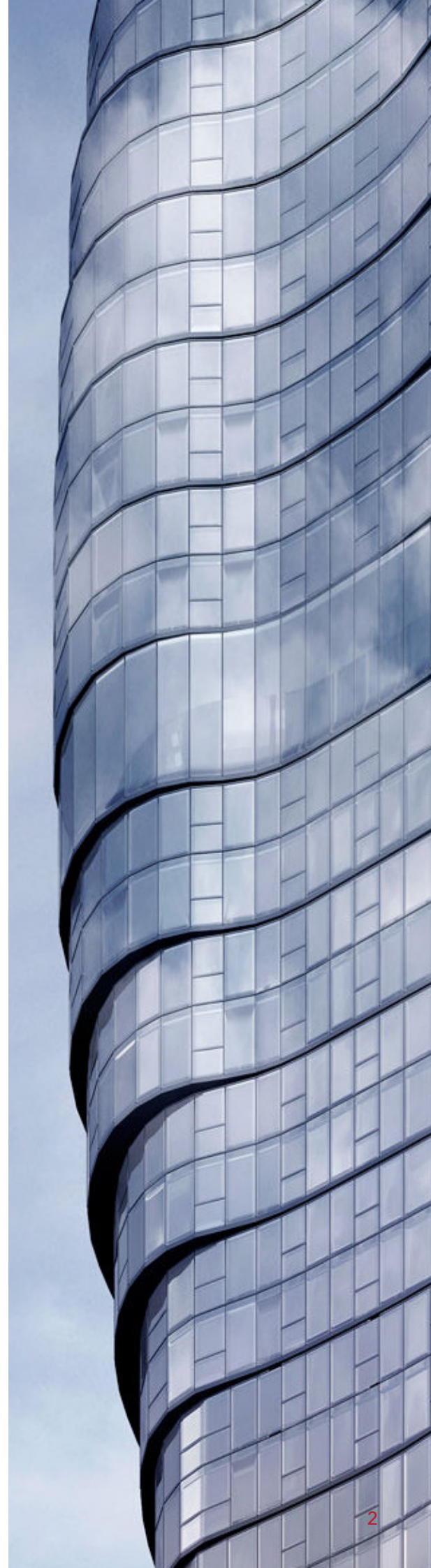
Panel Dimensions

Thickness: 4mm

Width (mm)	1250	1575
Length (mm)	2000-7200	2000-7200
Solid Colour	✓	✓
Metallic Colour	✓	✓
Spectra Colour	✓	✓
Brush	✓	✓
Stone/Wood	✓	✓
Anodise AL	✓	✓
Special Metal	✓	✗

Standard Panel Sizes

1250mm x 2500mm
1575mm x 2500mm
1250mm x 3200mm
1575mm x 3200mm
1250mm x 4000mm
1575mm x 4000mm



Alcadex®/NC Technology

- Deemed non-combustible
- Conforms to AS 1530.1 by CETEC (NATA Accredited)
- Non-Combustible Inorganic Matrix Core
- Highest Level of Fire Safety (for type A, B and C buildings)
- Lightweight
- High Rigidity
- Wide Range of Colours, Finishes & Natural Metals
- Superior Flatness
- 15 Year Manufacturer Warranty
- PPG Duranar Fluoropolymer Paint System

Fire Safety Characteristics

- Non-Combustible
- No Ignitability
- No Flammability
- No Heat Involved
- No Smoke Emission
- No Combustion of Gas
- No Toxicity
- No Heat Release

*Ask our ALCADEX/NC representative for full range of fire test certificates



Alcadex®/NC

Technical Data

Application	Alloy	Coil Thickness	Width	Weight per m ²	Panel Thickness	Hardness
Aluminium Composite Material	3003	0.5mm	1200 -1575mm	8.6kg per m ²	4.0mm 6.0mm	H18

Test Item	PPG Paint System
Coating Thickness	≥25 µm
Gloss Tolerance	≤10° (Gloss ≤70°) ≤5° (Gloss ≥70°)
Pencil Hardness	≥2H
Coating Flexibility	≤2T
Adhesion	≤ Class 1
Impact Resistance	50kg · cm No removal of paint nor cracking
Boiling Water Resistance	2 Hours No change
Anti-Acid Capability	2% HCL (Mariatic Acid), 24 Hours No change
Anti-Alkali Capability	2% NaOH (Sodium Hydroxide), 24 Hours No change
Butanone Resistance	≥100 times (1kg/cm ²)
Scour Resistance	≥10,000 times No change



Alcadex®/NC

Technical Specifications

Product

The ALCADEX/NC panel consists of an inorganic matrix core. Testing to Australian Standard AS1530.1 has proven the core to be non-combustible, offering high fire safe qualities whilst maintaining the look of an aluminium panel for use on the interior or exterior of buildings. ALCADEX/NC also provides an eco-friendly option as the aluminium is recyclable.

The ALCADEX/NC panel can be installed for interior application and exterior façade, soffits, and canopies.

Panel Fixing

The ALCADEX/NC panel should be cassette type mechanically fixed to metal top hat sections which are fixed onto the wall frame/substructure.

The fixing technique would depend on the location, span of the panel and wind load requirements. Where the panel is fixed in high wind load areas, the system design is to be reviewed by a qualified façade engineer.

All panels need to be fixed with a full Z angle around the perimeter of the panels. The panel joints should be caulked and sealed to avoid the exposed edge of the panels coming in contact with moisture (refer to the installation manual).

Please check with our technical team for further information.

Alcadex®/NC

Fire Performance

Test Standard	Rating
AS 1530.1	PASSED
AS 1530.3	PASSED
AS 3837	PASSED
NFPA 285	PASSED
ASTM E84	PASSED
BS476, Part 6 & 7	PASSED



Australia & New Zealand Distributor:



CSP Architectural Pty Ltd

info@alcadex.com.au

www.csparchitectural.com.au

(03) 9361 9999

September 2019/1