

**CIVIQ™**  
Public-use Products

**Elkay® SwirlFlo Bi-Level Fountain**  
with Integral EZH2O Bottle Filling Station

Product Code: LZWS-LRPBM28K



The Elkay SwirlFlo EZH2O is the ultimate multi-functional public-use drinking fountain water station for indoor environments. The design features a bottle refill dispenser, as well as bi-level drinking fountains, wrapped in an elegant, streamlined in-wall stainless steel case.

The sanitary no-touch activation sensor has a 20 second shut off timer and the Green Ticker counts the number of bottles saved from waste. The station also features an 11356-litre capacity WaterSentry® Plus filtration system with visual LED Filter Monitor, which indicates when replacement is necessary.

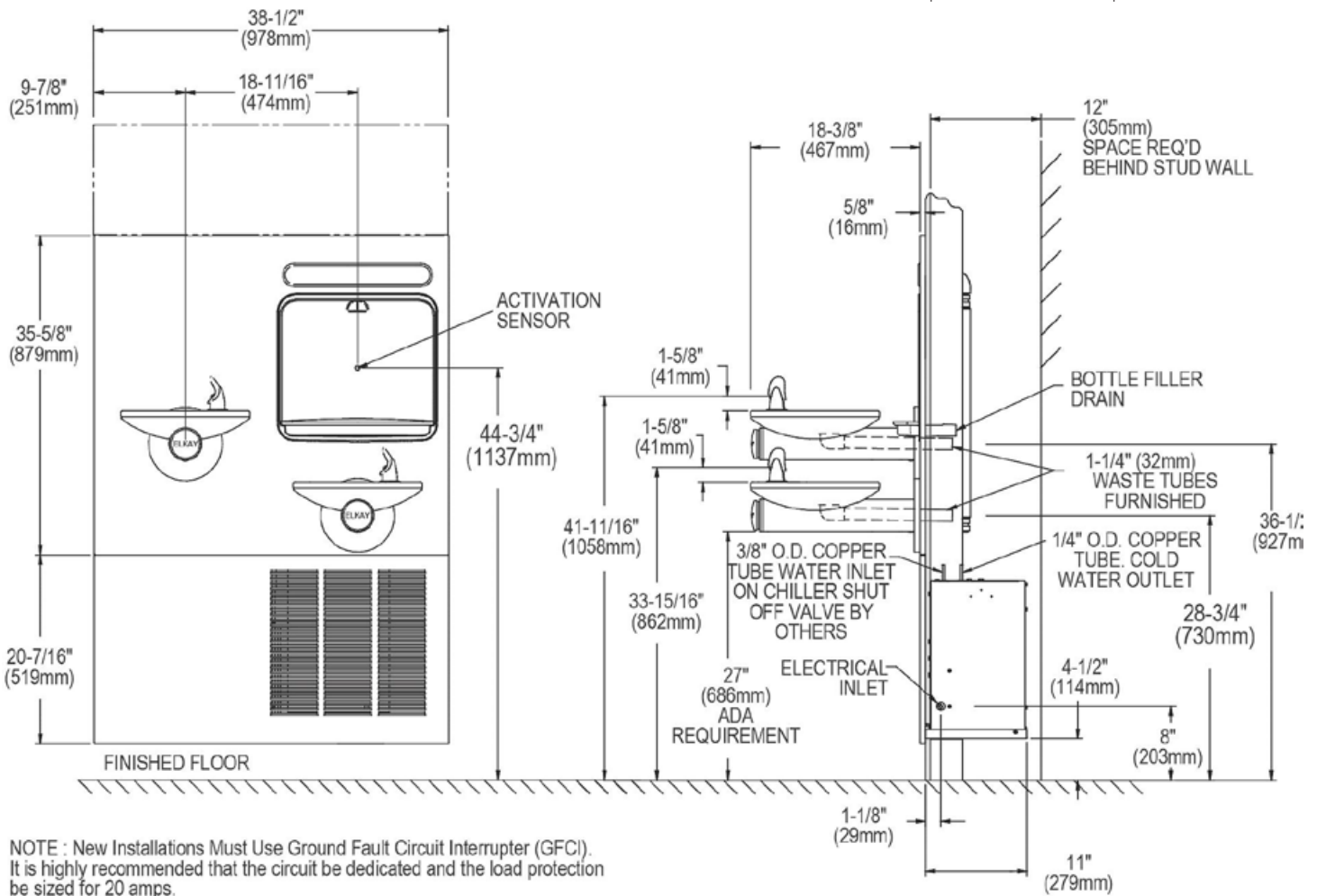
**Product features**

- Bi-level refrigerated fountains
- Integral bottled filler
- Wheelchair-accessible design
- Sanitary no-touch sensor activation
- Green Ticker™ counts bottles saved from waste
- WaterSentry® filtration system
- Up to five year warranty\*

**Technical Details**

Finish	Stainless steel
Power	220V/50Hz
Drinking Fountain Style	SwirlFlo with Flexi-Guard Safety
Mounting Option	Wall Mount (in wall frame plate)
Chilling Option	25 LPH **
Dimensions	990 L x 423 W x 382mm H
Shipping Weight	78.5kg

\*Please refer to the Elkay® Product Warranty for full terms and conditions  
 \*\* Based on a 26°C inlet water temperature and a room temperature of 32°C



NOTE : New Installations Must Use Ground Fault Circuit Interrupter (GFCI). It is highly recommended that the circuit be dedicated and the load protection be sized for 20 amps.

Front view

Side view (section through wall)