



## Bremer Series<sup>®</sup>



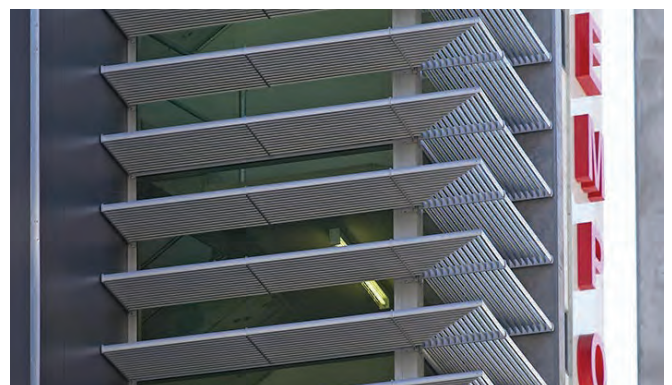
Louvreclad's Bremer Series<sup>®</sup> is a superior sunscreen system that enhances contemporary architecture. Fine, clean lines and various angle and pitch configurations enable functional sun-shading.

### Distinctive Features + Diverse Applications + Multitude of Benefits:

- Superior sun-shading performance
- Can be run continuously across a structure
- Variable blade pitch and angle
- Suitable for curved buildings
- Fine, clean lines
- Complements contemporary architecture

### Attention to Detail:

- Maximum blade span: 1200mm
- 45mm ellipsoid
- 11mm depth
- Designed, engineered and certified for incidental live load.



**SUPERIOR SUNSCREEN SYSTEM**



*Thinking outside for inside performance*

## DRAFT SPECIFICATION

Screens will be Louvreclad Bremer Series<sup>®</sup>. Blades will be mounted at [state pitch] mm pitch at [state angle]<sup>°</sup> angle.

### Base Material & Finish

Screens will be manufactured in [powder coated/anodised] aluminium finish in [state colour]

### Accessories [if applicable]

Screens will be fitted with [nominate options/accessories from the selection].

### Installation and Mounting

Installation and mounting details will be designed in accordance with proprietary systems and recommendations as designed and manufactured by Louvreclad Pty Ltd. Phone: 1300 165 678 Email: sales@louvreclad.com

### Base Material Options

- Extruded Aluminium

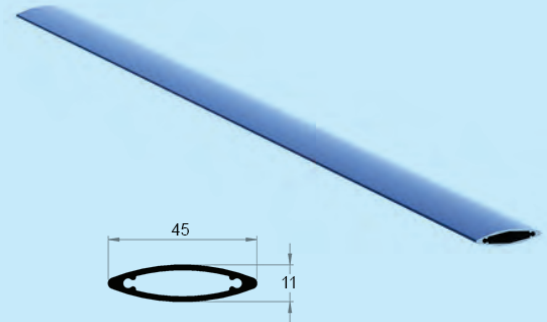
### Finishes Available

Choose from the following range of finishes:

- complete powder coated range
- complete anodised range

*Specialised coatings are also available on request.*

## PROFILES



## DAY DESIGN

## PRESSURE DROP TEST CERTIFICATE

Test 4203J-P



**Test Specimen:**

**Bremer Series Louvre**

**Test Specimen Dimensions:**

1800 mm (H) x 1200 mm (W) x 32 mm (D)

**Specimen Specifications:**

48% Open Area per Module  
Blades @ 40 mm Pitch & 45° angle  
Throat Height @ 20 mm

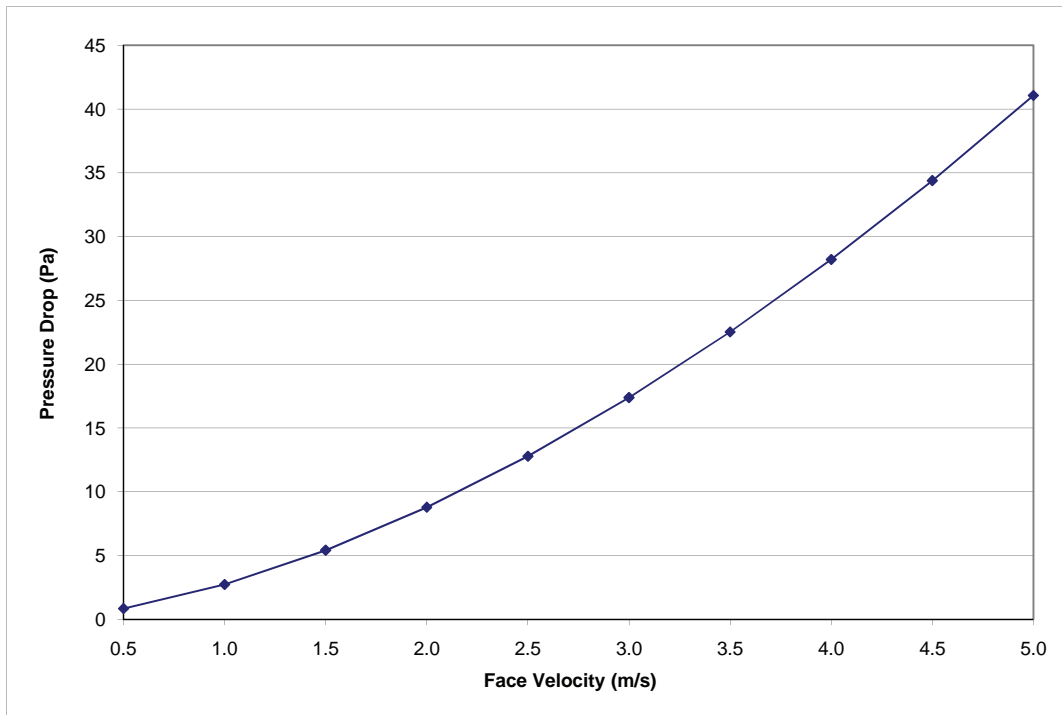
**Test Location:**

Twin Reverberation Rooms  
National Acoustic Laboratories  
126 Greville Street, Chatswood NSW

**Instrumentation:**

- Vaisala Digital Barometer (Type PTB201AD)
- Kestrel Anemometer (Model K2000)

Face Velocity (m/s)	Pressure Drop (Pa)
0.5	0.9
1.0	2.7
1.5	5.4
2.0	8.8
2.5	12.8
3.0	17.4
3.5	22.5
4.0	28.2
4.5	34.4
5.0	41.1




**Date of Test:** Tuesday, 25 August 2009  
**Project Number:** 4203J-P

**Test Engineer:** Alex Li, BE(Mech) Hons  
For and on behalf of Day Design Pty Ltd



**i WOULD YOU LIKE TO KNOW MORE?**

If you have any questions about this product, or if you would like to speak to a member of our expert team about how we can tailor a solution for you, call: **1300 165 678** or visit: **[louvreclad.com](http://louvreclad.com)**