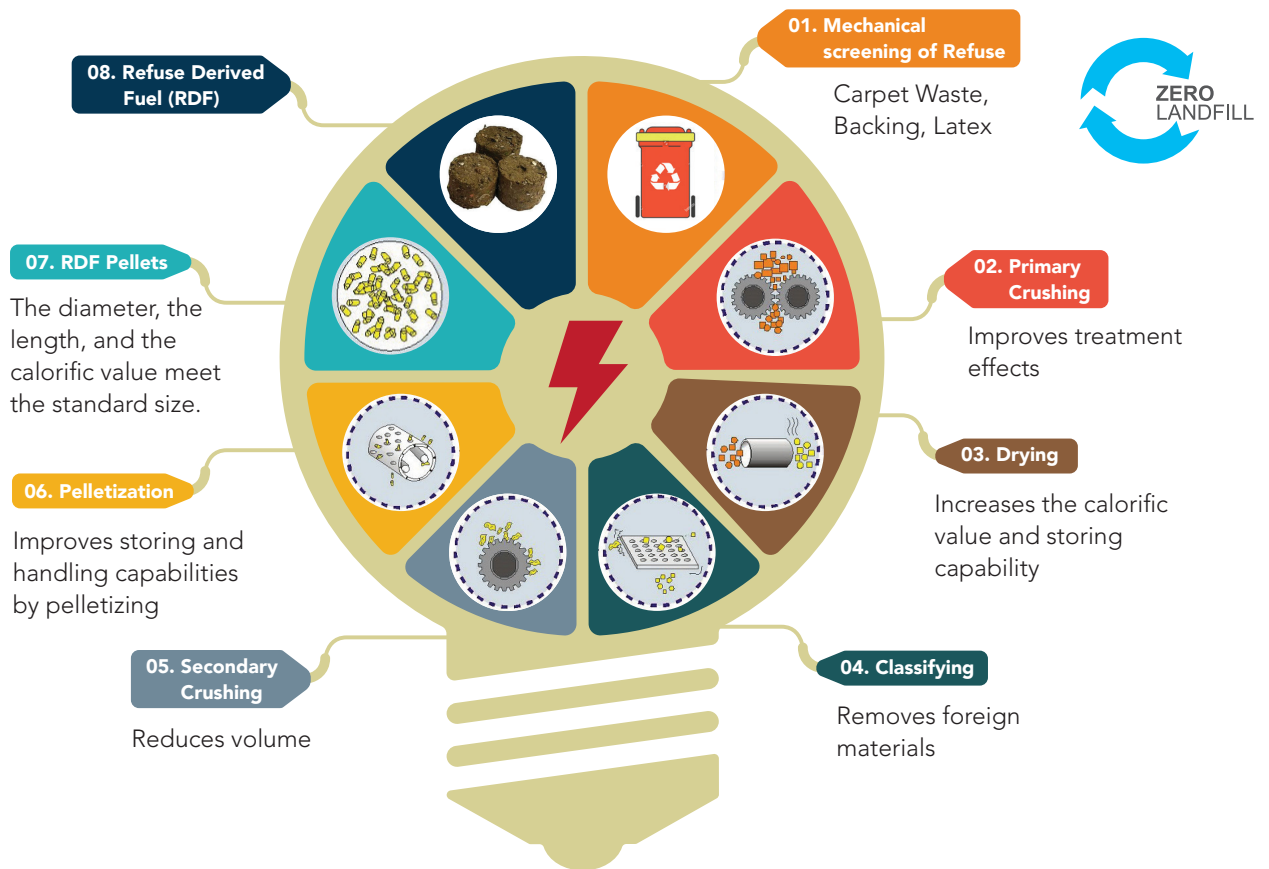


# Carpets Inter® Sustainability Campaign

## DIVERTING MANUFACTURING OFF-CUT WASTE TO POWER GENERATION

Global Energy demand for Electrical Power Generation is projected to rise considerably in the future, whereby diminishing fossil fuels currently used for making power continue to pollute the environment with harmful CO<sub>2</sub> emissions. Purchasing carbon credits to offset this pollution is not only reactive but also expensive, therefore Power generation plants are being governed to seek alternative sources of fuel, such as bio-fuel or Refuse Derived Fuel (RDF) from municipal solid waste. The below info-graphic illustrates how since 2014, as part of our cradle to grave mission Carpets Inter has achieved Zero Waste going into landfill by diverting its manufacturing off-cut waste to be used as RDF with a Thai Power Plant.



| List                          | 2017    | 2018    | 2019 YTD (August) |
|-------------------------------|---------|---------|-------------------|
| <b>Carpet Scrap (kg)</b>      | 127,540 | 460,090 | 249,210           |
| <b>Power Generation (kwh)</b> | 125,398 | 452,366 | 245,026           |

