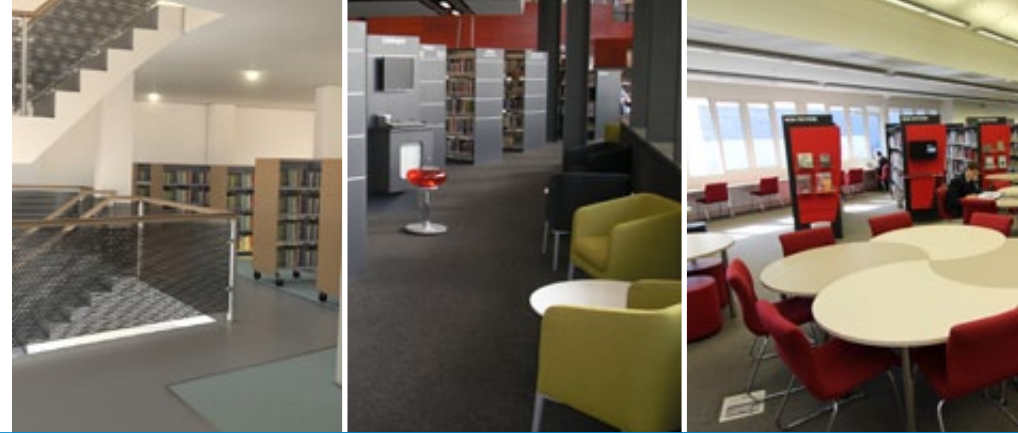




LOOKBOOK

DESIGNING LIBRARY SPACES

DISCOVER YOUR LIBRARY'S POTENTIAL



CREATE YOUR DREAM LIBRARY FROM CONCEPT TO COMPLETION WE ARE HERE TO HELP

- 2D and 3D CAD drawings, custom design and development
- Free advice and consultation
- Off the shelf and customised solutions
- Visio floorplans to assist with layout
- Library installation and book relocation

R-ESTIMATOR

RAECO'S QUICK RESPONSE FLOOR PLAN COST ESTIMATOR

R-Estimator is a convenient and obligation free service that helps establish project budgets by providing per square meter or per foot pricing. Based on project outcomes from all sectors and including low cost, mid range, and high end solutions, simply choose your preferred outcome and Raeco® can indicate pricing for you.

If you have plans to invest in a library space and need a quick – fit out, budget estimate call Raeco®:

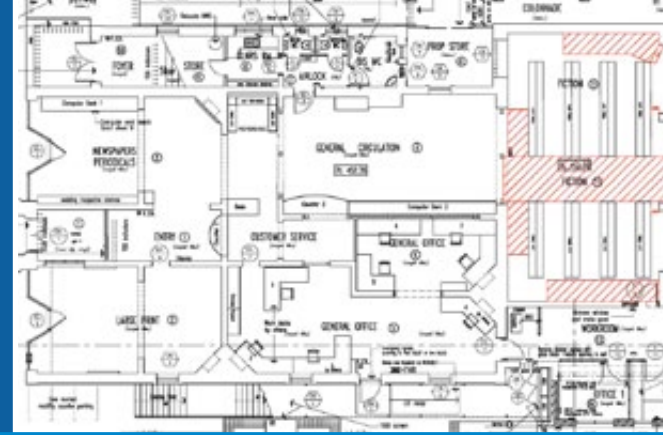
1300 727 231



6 GREAT REASONS WHY YOU SHOULD PARTNER WITH RAECO® ON YOUR NEXT PROJECT

- Raeco® sources standard product from Australia and around the world to bring you an extensive range of library solutions or can offer customised solutions to suit your specific requirement
- Raeco® use ProjectTracker; a dedicated software to track, manage and communicate your project at every step
- Raeco® have a vast installer network Australia wide and can even arrange book relocation
- Looking for green solutions? Raeco® offers polytec and E0 rated MDF board as well as an extensive range of recyclable, carbon neutral and eco fabrics
- Raeco® provides complete solutions so you benefit from minimum of suppliers and cost effective solutions
- Raeco® shelving is backed by a lifetime warranty, available in an extensive range of colours and shelf types and is flexible to meet your future needs

EVERY IMAGINATION ANY BUDGET



SERVING
AUSTRALIAN
LIBRARIES
FOR OVER
50
YEARS

AT RAECO® WE CONSULT,
DESIGN, SUPPLY AND INSTALL,
BENEFIT FROM OUR EXPERIENCE

LET'S GET STARTED...

- 1 Call Raeco® on 1300 727 231 to arrange a free consultation including helpful advice, ideas and project planning.
- 2 Meet with a Raeco® Area Manager to discuss your vision, including floor plan, products, application, colour and finishes.
- 3 Raeco® will provide a formal quotation with time, cost and quality compliance.
- 4 Quotation is accepted or revised ahead of receiving the order.
- 5 Raeco® engage "end to end" project management – including the production scheduling, site checks for final measure and accessibility, and coordination of finished goods, delivery and install.
- 6 Raeco® Area Manager conducts a post project assessment to ensure project satisfaction.



RAE-2013
GECA 28-2006 v2
Furniture & Fittings

PARTNER WITH
RAECO®,
WE KNOW
LIBRARIES



CHECK OUT OUR
OTHER PROJECTS AT
WWW.RAECO.COM.AU

CONTRACTS

Department of
Education and
Training **QLD**
(WOGSOA)

Whole of
Government
Contracts **WA**
(CUAFRN)



CONTACT

Telephone 1300 727 231
Email support@raeco.com.au
Web www.raeco.com.au

WILLIAMSTOWN LIBRARY VIC

The new library includes a cafe space, public meeting space and alfresco area with a wrap around deck.

THE CLIENT WILLIAMSTOWN LIBRARY

THE PROJECT

New fully accessible two story building, linking to the Williamstown Town Hall to create an Arts and Culture precinct.

CHALLENGES

- To create fully flexible facilities.
- To provide a state of the art facility that was complementary to the Heritage of the Town Hall.
- To combine the 21st features and functionality to meet the needs of customers of all ages and abilities while harking back to the strong maritime history of the area.

SOLUTIONS

- All shelving and equipment is moveable to maximise flexibility.
- Combination of traditional row layout with less formal genre lounges.
- Combination of frosted acrylic and wooden shelf wraps to highlight the heritage collection in timber.

RESULTS

- The visually striking exterior is matched with an inviting and well laid out interior; the symmetry is particularly evident when looking down from the first floor.
- A muted palette of silver and limed pine on the shelving and furniture with the use of strong accent colours on the signage and soft furnishings, really adds to the wow factor!
— Joanne Smith, Library Services Co-ordinator







"The vivid white and charcoal shelving perfectly complements the vibrant furniture and fittings to create a welcoming space for library users."

STEVE RICHARDS

RYDE LIBRARY NSW

The fresh, modern design of Ryde Library provides a comfortable and roomy environment that avoids the traditional 'rows of shelving' approach

It creates a much more spacious and less formal feeling library space

THE CLIENT RYDE LIBRARY

RESULTS

All free standing shelving units are completely mobile and no more than three bays in length. This ensures that the library space is flexible and can be changed around as required to accommodate special events and functions.

The Local Studies shelving is housed behind lockable glass doors. This enables the collection to be clearly visible to the public at all times, while also ensuring the security of rare and valuable items.

The angled shelving configurations aid pedestrian flow through the library and create separate "subject rooms" and reading spaces.

SOLUTIONS

"Low profile" 1, 2 and 3 bay long mobile units with colour keyed, concealed castors", "High Lustre" paint finish was used on "Box" End Panels and Canopy tops.

– Steve Richards, Section Manager, Library Operations





WANNEROO LIBRARY AND CULTURAL CENTRE **WA**

The City of Wanneroo project team for the Wanneroo Library and Cultural Centre worked closely with Raeco® in the provision of shelving for the Library, Heritage Services and staff areas.

THE CLIENT WANNEROO LIBRARY

THE PROJECT

Wanneroo Library and Cultural Centre is the flagship library for the City of Wanneroo's library network.

RESULTS

Raeco® were asked to provide library shelving in a colour selected by the Architect's Interior Designer and not within their range. This created challenges that they handled with professionalism and adaptability.

The shelving in the library looks fantastic and staff often receive compliments on the building and its fittings.

Thanks Raeco® for the support you gave us either in person or at the end of a phone. – *Jenny Kenny*



"Phillip Babich is to be commended for the level of customer service we were shown."

JENNY KENNY



HALE SCHOOL WA

Hale School is a selective, independent, Anglican day and boarding school for boys, located in Wembley Downs, a coastal suburb of Perth. The Forrest Library is a state of the art facility for the school.

THE CLIENT HALE SCHOOL

THE PROJECT

Forrest Library

SOLUTIONS

Curved timber shelving with curved bench seating.

RESULTS

The signage throughout the Hale School Forrest Library is extremely functional and attractive. It is clear and concise, allowing the boys to locate resources easily. The simple lines do not dominate the shelving visually yet they assist with locating subject areas. The signage is often commented on by visitors to the library because it is so effective. It is a flexible system that allows changes to be made when necessary. The signage is unobtrusive yet extremely helpful. The panels can be interchanged and added to as necessary. As the collection grows or changes, so can the signage.

– Anette Ainsworth, Head of Library



ADULT FICTION

-PET

KHA-

RECENT ARRIVALS

CHATSWOOD LIBRARY ON THE CONCOURSE NSW

Chatswood library is located in the heart of the CBD in the new cultural hub known as The Concourse, which includes a concert hall, theatre, and public library. Opened in September 2011 the library is operating 68 hours a week over 7 days.

THE CLIENT WILLOUGHBY CITY LIBRARY SERVICE

THE PROJECT

Opened on Monday 19 September; Chatswood Library on The Concourse will provide a new, modern and highly resourced library to the City of Willoughby. The new Chatswood Library will be one of the largest in the state of NSW with more than 5,000 square metres of floor space, three times the size of the original, which was built on the site in 1977.

Willoughby City's central Library, Chatswood Library will complement Willoughby's network of branch libraries at Artarmon, Castle Cove, Naremburn, Northbridge and West Chatswood and the community library at Castlecrag.

CHALLENGES

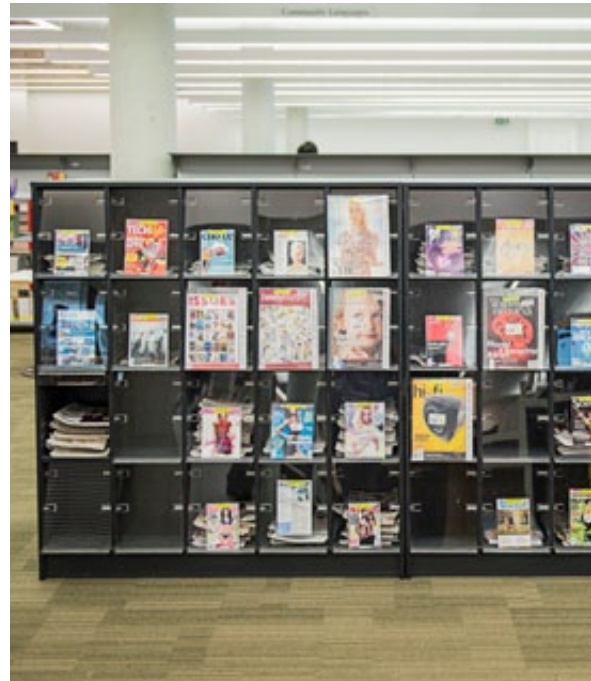
The vast library space was impeded with numerous concrete supporting columns.

SOLUTIONS

Special length custom shelving bays were created to facilitate layout between columns.

RESULTS

Chatswood library offers an extensive collection of over 270,000 items and a community languages collection of 12 languages, spaces for children with a large story time and craft area, a young adult area, meeting rooms and a language learning room. Also located within the library is the Sustainability Education Centre that provides an interactive guide to the sustainable design features of the Concourse building. – Michele Burton, Manager, Library & Community Learning Services – Design Architects, FJMT







NEWINGTON COLLEGE LIBRARY **NSW**

Brand new library building to celebrate the college's sesquicentenary and meet the needs of staff and students.

THE CLIENT NEWINGTON COLLEGE LIBRARY

THE PROJECT

Newington College built a brand new library to meet the learning and recreational reading needs of students and staff.

CHALLENGES

Solutions were required to house and display the Library's collections in a purpose-built learning facility to encourage use of the Library as a central learning hub. Intricate wall shapes had to be built around to create functional areas with a seamless approach.

SOLUTIONS

The design of the wood panelling combined with the charcoal shelves provide an elegant and sophisticated ambience, which helps set the tone of the Library as a central learning hub in the College community. The custom-made shelves that wrap around the walls on the mezzanine level of the Library provide a wonderfully cosy reading area, surrounded by books, which the students absolutely love.

RESULTS

The fresh, new shelving solutions have helped students and staff rediscover the Library's collections and has enabled the collection to shine as part of the Library's move to the new building. Positive feedback from students, staff and the parent community has demonstrated the value of choosing Raeco® as a provider of shelving solutions. Our wonderful new facilities will enable us to achieve our vision of providing a successful and fulfilling education to young people in Australia.

– Crystal Choi, Head of Library Services



STONNINGTON LIBRARY AND INFORMATION SERVICE VIC

Prahran Library is an inner city library located in trendy Greville Street and is part of the Stonnington Library and Information Service

THE CLIENT STONNINGTON LIBRARY AND INFORMATION SERVICE

THE PROJECT Prahran Library

RESULTS

When Prahran Library was relocated to the main hall of the Prahran Town Hall we chose Raeco® to supply our shelving. They worked closely with our architects to ensure we had the best possible arrangement to enable easy access for all our customers. They also provided flexible solutions to accommodate our growing AV collections and gave us options for face out display, to show our collections off in the best possible way.

They were also able to design bay ends to accommodate our 15 minute stand up internet PCs, which have proven to be extremely successful for those wishing to quickly check their emails. They provided a tidy solution for cords and hardware and created a slick look.

Raeco® were also able to custom design and build cabinets for our Wii and X-box, which enabled the boxes to be locked securely away while still allowing kids to access the games as required. These have been a great addition to our library and not just for the kids!

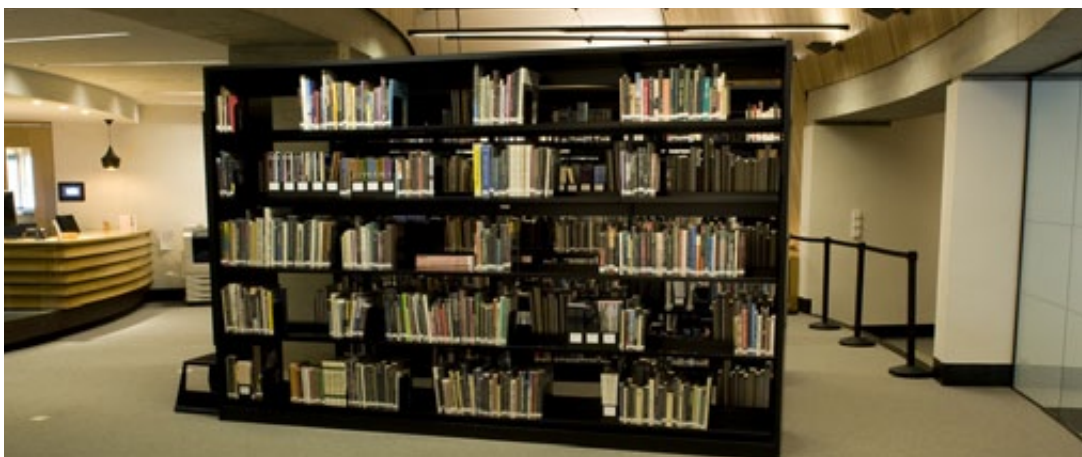
We are extremely happy with our new library and enjoy the positive feedback we have received from those using our services. – Dianne Panjari, Senior Team Leader, Library Operations





"In all aspects Raeco® have been extremely easy to work with, coming up with solutions, incorporating our ideas and seeing through the installation."

DIANNE PANJARI



MUSEUM OF OLD AND NEW ART (MONA) TAS

THE CLIENT MUSEUM OF OLD AND NEW ART (MONA),
HOBART, TASMANIA

THE PROJECT

Located in a sympathetic extension that radiates out from a heritage-listed roundhouse designed by Sir Roy Grounds, the brief was to create a library that safely housed the MONA reference collection. Growing over time from 1400 titles personally acquired by David Walsh (MONA owner) to over 5500 titles, the collection had come to function as a significant resource for MONA staff. The aim was for the library to continue as a reference centre for staff as well as being easily accessible and available to researchers, museum visitors and the general public.

CHALLENGES

To make the best use of the space while creating an atmosphere in keeping with the overall style and design of the museum.

SOLUTIONS

The shelving was custom coated to match the architect's overall theme, as were the custom built bay ends and caps. Specially fitted skirting boards along the base of the shelves completed the look to give an overall finish that is clean and stylish. The care taken during installation ensured the shelving bays all sit comfortably in a space that radiates out from the core of the original building.

RESULTS

A beautiful library that is also functional for staff and users. Many users and visitors comment on the restful atmosphere that welcomes both researchers and museum visitors looking for a space to relax during their visit to MONA.

– Mary Lijnzaad, Manager, Library & Numismatics Collection



CLONCURRY LIBRARY QLD

THE CLIENT CLONCURRY SHIRE COUNCIL LIBRARY

THE PROJECT

Cloncurry Library

CHALLENGES

The brief was to provide an interesting, welcoming space that would involve the local and visiting community.

SOLUTIONS

The challenge of bringing this into a re-furbished 1939 Community Hall was achieved right down to the finest detail including curtains dating back to the fifties, after being dry cleaned by the same company that originally made them.

RESULTS

Cloncurry's new library is housed in the \$1.8m refurbishment of the 1939 Shire Hall.

The partnership between the architect, Cloncurry staff and Raeco® produced an amazing result that is welcomed and enjoyed by locals and visitors. From the warm welcoming entrance to the sleek lines which show off special areas for all age groups.

Specialty furniture pieces included the laptop chairs where a modern comfortable chair is married with a new style desk, and very comfortable lounge chairs in a myriad of sizes, colours and shapes.

The books and other items are easily accessed by the use of specialty mobile shelving.

Children are especially catered for with a caterpillar style book display as the centre piece

There is room for Historical pieces, as well as up to the minute direct access to computers and the internet.





BIALIK COLLEGE VIC

Bialik College, a prestigious private school located in Melbourne's Eastern Suburbs, was seeking a library solution to increase the flexibility of their new building.

THE CLIENT BIALIK COLLEGE, EAST HAWTHORN VIC

THE PROJECT

New school library building.

SOLUTIONS

Custom made shelving units and flexible learning spaces for students.

RESULTS

Bialik College choose Raeco® to supply all the shelving and signs in our new library. With a wide array of products to choose from,

helpful advice from Raeco® staff who really understand libraries, and competitive pricing; Raeco® played a significant role in our new library fit out.

Raeco® supplied a combination of static and flexible shelving which gives us new and exciting ways to display the collection. Our new Raeco® shelving has already made a noticeable difference in our circulation figures. Raeco® was also happy to work with the library staff to develop custom built solutions; in particular our slimline bay end OPAC kiosks and the Perspex book and DVD spinner signs.

In supplying shelving and signs for the new Bialik College Library Raeco® was more than just a supplier; they were a partner. All the positive feedback we have received from other libraries underlines how important this partnership has been in enabling Bialik to build a truly innovative and engaging 21st century library. – *David Feighan, Director, Libraries and Learning Resources*





CAMBERWELL LIBRARY VIC

THE CLIENT CITY OF BOROONDARA LIBRARY SERVICE

OBJECTIVES

To redevelop the existing Camberwell Civic Centre for the new Camberwell Library and Office Precinct and create a 'destination' for community members whilst increasing the circulation of materials and visits to the library.

CHALLENGES

Working with, and conversion of, an existing space proved a challenge as structural pillars and walls couldn't be moved which dictated the design of the library.

SOLUTIONS

Spaces were designated within the design for specific collections and activities and consideration was given to the best placement of areas such as the children's collection and activity area for safety, access and minimal noise and impact on others.

Shelving units were installed on wheels, to give flexibility for the configuration of the designated areas in the library. They are easy for staff to move to open up space for library events, if required.

Lots of display shelves and bay end panels with Slatwall channels have been included for face-out display of items. Slatwall has also been installed for the display of pamphlets and notices for Library events and we are investigating installing more to accommodate our CD collection.

RESULTS

Since opening, we have had an unexpected increase in the number of visits by young people; they are coming to study in the quiet study area, or in groups at the study tables, to use the free Wi-Fi and the study room, or just to relax and read or meet with friends.

Many positive comments have been received about the library; people love the décor, the modern feel and the comfortable furniture. The Raeco® face-out shelving displays mean that items move quickly and staff regularly need to replenish the displays throughout the day.

The Camberwell Library has become the face of the Library Service. We are able to provide a wonderful service, promote an incredible range of programs and collaborate easily with other departments. – Myra Dowling, Local & Family History Librarian





ALBURY LIBRARYMUSEUM NSW

THE CLIENT ALBURY CITY COUNCIL

OBJECTIVE

Albury LibraryMuseum opened in 2007, moving from a small 1960's building with a mixture of built-in wooden shelving and 20 year old metal shelving. The result was rusty and musty. The new facility is an architecturally designed building – very much a 21st century building that caused no small amount of local controversy when the initial designs were released. The internals of the library zones in the building are characterised by light and space, with large (west facing) windows and extremely high ceilings. The facility is a converged library and museum which includes distinct library and museum zones and an 'info zone' that is the library and museum research and technology hub of the building. Whilst there is a distinct museum zone, smaller exhibitions are scattered throughout the facility, including being integrated into library shelving.

Specific objectives for library shelving and furniture included:

- A requirement to be sleek and modern to be in tune with the building architecture and the furniture chosen by the architects, however clear accessibility is important.
- To include as much front-on display as possible.
- To allow the integration of small exhibits or displays within or adjacent to the shelving.

CHALLENGES

- The length of the library zone and the location of the children's area at the furthest reach from the loans desk meant visibility for security and parents searching for their own library materials, was limited.
- The potential for the amount of light coming through the windows impacting negatively on customer comfort and materials.

SOLUTIONS

Raeco® clearly understood our brief and were able to offer assistance in shelving locations, colour and height to address our objectives and some of the implicit challenges. Visibility throughout the length of the library zone was increased by altering shelving height in the fiction area. The amount of front-on display was maximised.

RESULTS

- On opening, the LibraryMuseum achieved the objective of being sleek, modern, but accessible and 6 years on the facility is still highly contemporary.
- Over the last almost 6 years since opening the excellent usage figures have been maintained, with visitors doubling from the old library and loan figures increasing by over a third.
- A customer feedback survey indicated that the community are extremely proud of the LibraryMuseum. They see it as a community hub, as much a meeting place as a place to borrow books, undertake research, surf the net, attend a workshop or view an exhibition. – *Carina Clement, Libraries and Museum Programs Team Leader*

Fiction

Fiction

Catalogue

Fiction

Fiction

Kids Books

Reference

BRIGHTON GRAMMAR LIBRARY VIC

THE CLIENT BRIGHTON GRAMMAR

THE PROJECT

To furnish an area created through weeding non-fiction and the subsequent removal of shelving.

CHALLENGES

A solution was required that would meet the school's need for an area more suited to the collaborative learning and teaching style being adopted by the school. We were also cognisant of the fact that more research was being done online through databases provided on the school website than through books.

SOLUTIONS

A more flexible space was created using Arc tables in two shades for variety that could be variously configured with comfortable Moona chairs. As well smaller round tables with ottomans for seating were added using colours that matched the original colour scheme of a library that is only 7 years old. Fourteen additional Moona chairs were bought for an area underneath a window used for private study creating a uniform type of seating through the middle section of the library.

RESULTS

Senior boys are using the space for classes, consultation and private study. It has been popular with teachers and students and created an area in the library that fits in with the original design. – Jennifer Neal, Head of Library





DONCASTER LIBRARY VIC

THE CLIENT WHITEHORSE MANNINGHAM

THE PROJECT

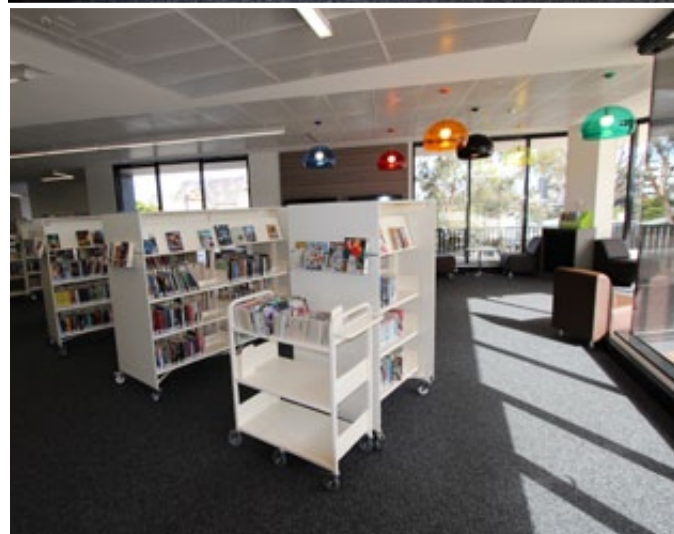
Doncaster is one of the Whitehorse Manningham Libraries and is located 18kms east of the Melbourne CBD.

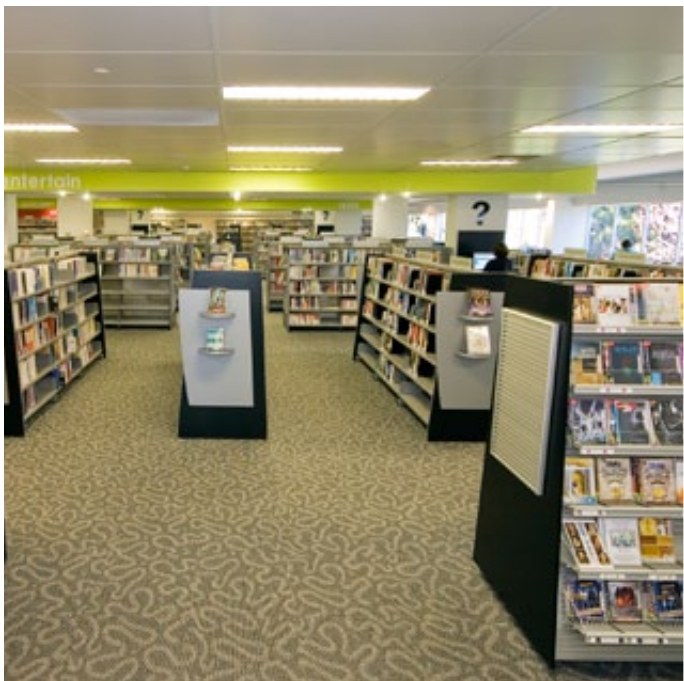
Doncaster Library at MC Square (Manningham City Square) is co-located with a gallery, café and a range of community arts, children's and youth services, health, disability and social welfare services. Opened on 13 August 2012, the new 1700sqm library over two levels is the central focus of the community hub.

RESULTS

The new library provides reading, study and program areas, increased access to technology, Wi-Fi, a flexible training room, self-service loans, youth areas, local and family history resources and a new Chinese language collection.

– Sally Both, Manager Corporate Services





GREATER TAREE CITY LIBRARY NSW

THE CLIENT GREATER TAREE CITY LIBRARIES – Taree Library, Hallidays Point Library, Harrington Library

THE PROJECT

The brief was to create each library as a welcoming community space with a bookstore look and feel.

SOLUTIONS

The objective was achieved through use of varied height shelving – the lowest possible shelving to accommodate each area, and raked shelves to maximise customer viewing angles.

Runs of shelving are short and varied to avoid the 'wall of books' effect.

Use of display shelves and bay end displays was maximised to showcase the collection.

Clear common language signage identifying genre above each bay is a feature of the look – library jargon such as "non-fiction" was banned from the project!

Two new branches that followed the construction of the central library were able to use the same base shelving with different colour palettes for end panels to achieve the brand while maintaining their own identity.

RESULTS

The end result is public libraries that are well-used community lounge rooms! – *Margie Wallis, Manager Library Services*



MUDGEE LIBRARY NSW

THE CLIENT MID-WESTERN REGIONAL COUNCIL

THE PROJECT

The renovation and extension of the Mudgee Town Hall building was a major community infrastructure project for Mid-Western Regional Council.

CHALLENGES

The design included a three level extension that doubled the space of our library.

In developing plans for shelving and furniture throughout the library area, the major challenge was in designing spaces that allowed for linkages between the original Heritage-listed building and the new areas.

SOLUTIONS

Raeco® initially responded to the brief with a positive and innovative vision and as plans developed they were able to work with us to make changes as the building and the project came alive.

RESULTS

The fit-out design and the installed furniture has offered us a bright, spacious and modern library that has respect for the history of the building and provides us with a community space of which we are all extremely proud.

– Simon Jones, Manager, Information Services





KINGSTON LIBRARY **ACT**

Kingston Library opened on Giles Street, Kingston in 2009. Libraries ACT delivers public library services to the ACT community. It is the only public library service in Canberra.

THE CLIENT

ACT LIBRARY SERVICE, KINGSTON ACT

CHALLENGES

Long, narrow library space.

SOLUTIONS

Mobile shelving bays in Bright silver with Laminex® Charcoal bay end panels and solid dust covers were utilised for this long narrow library space to provide maximum flexibility by allowing the library to move the shelving aside for story time ensuring service is never compromised.

RESULTS

For the new Kingston Library, Raeco® supplied single sided shelving in Bright Silver with Formica® Antler Velour bay end panels and solid dust covers. The finished result is a highly functional library with a trendy vibe that is cosy and inviting.

LOOKBOOK

DESIGNING LIBRARY SPACES

EDITION 1 – JULY 2013



RAECO®
ABN 72 006 501 926

75 RUSHDALE STREET, KNOXFIELD VIC 3180

TELEPHONE 1300 727 231
FACSIMILE 1300 727 241
EMAIL support@raeco.com.au
WEB www.raeco.com.au

Cover Image: Williamstown Library, Victoria