

Satinato

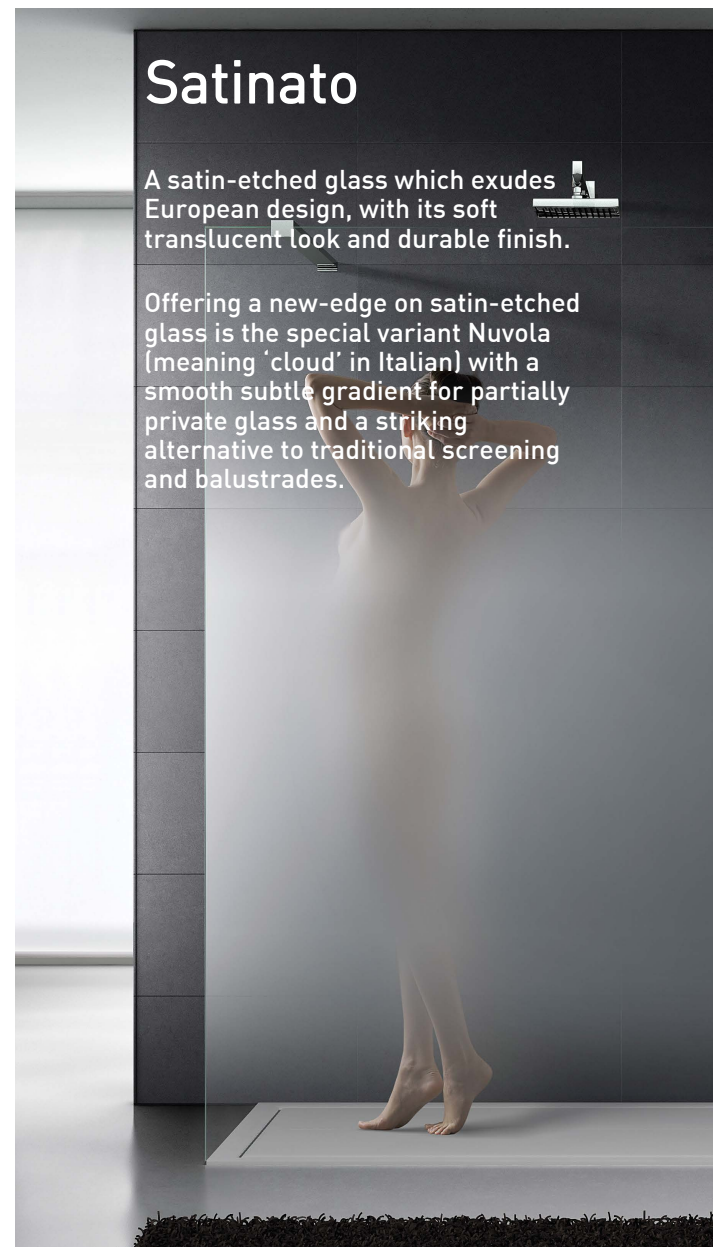
Lustrous Satin Etched Glass

8A Kitchen Rd
Dandenong South 3175
T +61 3 8788 5888
F +61 3 8788 5899
info@glassworksaustr.com
glassworksaustr.com

GLASSWORKS

Glassworks' range of satin-etched glass offers a superior finish which is fingerprint free and scratch resistant for a plethora of decorative applications.

Produced in Italy and processed locally by Glassworks, consistent quality and lasting beauty with the Satin range is guaranteed.



Satinato

A satin-etched glass which exudes European design, with its soft translucent look and durable finish.

Offering a new-edge on satin-etched glass is the special variant Nuvola (meaning 'cloud' in Italian) with a smooth subtle gradient for partially private glass and a striking alternative to traditional screening and balustrades.

Available sizes

	4mm	6mm	10mm	12mm
Satinato	*	*	*	*
Opaque				
Satinato Nuvola		*	*	
Satin Design Strip, Staccato, Merletto			*	
Satin Design Fili, Tree, Fuzzy		*		

Sheet sizes - 2250 x 3210 or cut to size

OPTIONS

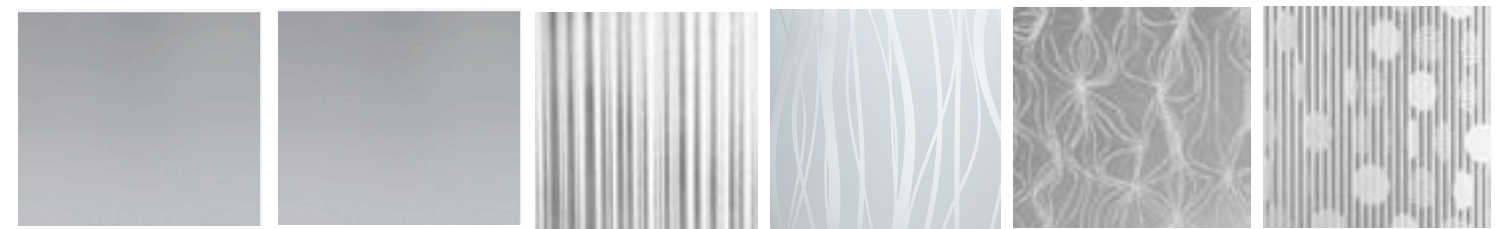
Satinato

Opaque in Clear or Low Iron [extra clear] | Nuvola in Clear

Satin Design

Strip | Fili | Merletto | Staccato | Tree in Clear

Swatches



Opaque

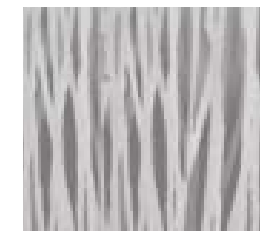
Nuvola (gradient)

Strip

Fili

Merletto

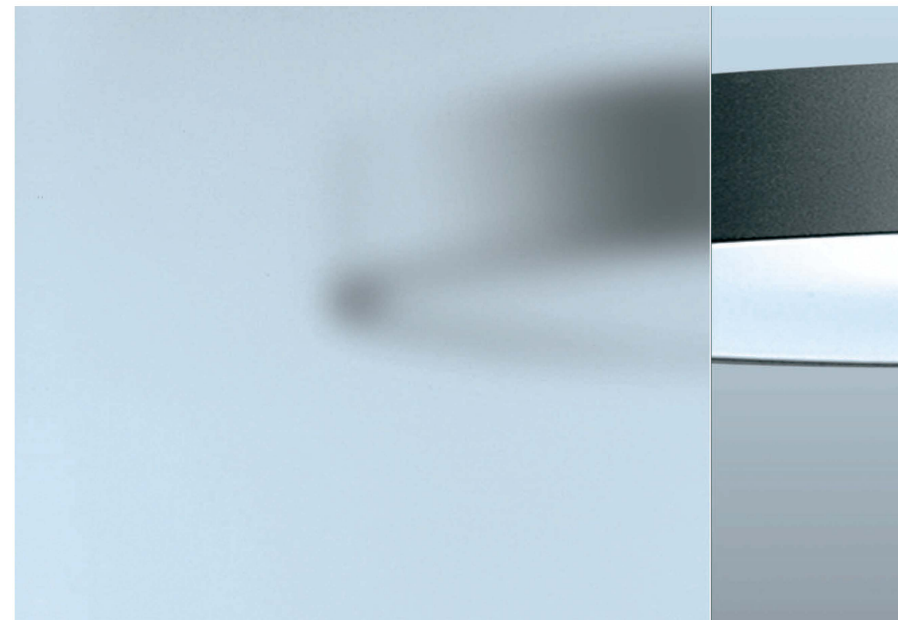
Staccato



Fuzzy



Tree



Satin Design

Stunning timeless satin-etched glass patterns in a combination of tactile matt/gloss finishes. The range of delicate satin effects and dramatic etched patterns with a brilliant enameled finish is both durable and practical for a host of applications including showers, balustrades, decorative panels, doors and partitions.

