

Titus Tekform
Product brochure

Titus Tekform



Tekform Slimline Drawer

2017

Important Information

Technical information

While every effort has been made in the production of this catalogue to ensure the accuracy of information, our products are continually being revised and users should confirm the up to date specification before ordering. Due to constant improvement of products presented in the catalogue, we can make changes at any time and without notice.

Responsibility

It is the responsibility of the user to ensure the fitness of hardware for the intended purpose. We recommend assessment by appropriate testing in the application and by technical enquiry to our representatives.

Intellectual property

Titus Group owns the intellectual property rights in its products worldwide whether as trademarks, patents, intellectual, copyright, designs, illustrations, drawings and the 'know how' contained in their design and production. Titus Group respects the equivalent rights in competitors and all other relevant product design rights. To our knowledge our products do not infringe any intellectual property rights of competitors or other parties. Titus Group takes infringements of its rights seriously and will rigorously defend these rights to the full extent of the law.

*Non preferred articles

All Item numbers in the catalogue marked with * are for non preferred items available on extended delivery times.

Trademarks

Titus and Titusonic are registered trademarks of Titus International Ltd. Lama is a registered trademark of Titus d.o.o. Dekani, WoodWelding is a registered trademark of WW SA.

2nd Generation Double Wall Drawer System



Sleek look

- Narrow sides
- Efficient utilisation of drawer space

'EasyFix' front panel connector

- Hand insertion
- Quarter turn lock
- Repeatable assembly and disassembly possible

User friendly mounting

- Intuitive installation instructions
- Easy assembly and disassembly of the drawer

Tekform Slimline Drawer



Flexibility in use

- Same panel cutting dimensions as 1st generation Tekform drawer
- Same drilling specification as 1st generation Tekform drawer

Superior vertical and horizontal stability of rails

- Smooth and silent operating
- Reliable drawer opening and closing
- Improved drawer stability in open position

Titus damper inside

- Life-long consistent performance at various closing speeds
- 'Confident Close'
- Low pull-out force

Tekform Slimline Drawer

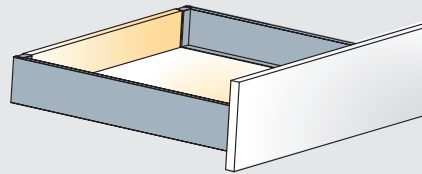
Product Guide

Page

Tekform Slimline Drawer

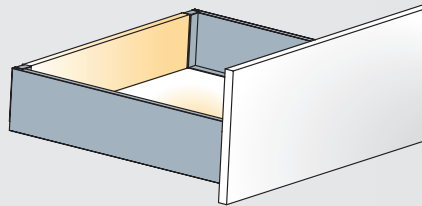
Tekform slimline drawer DW70

14



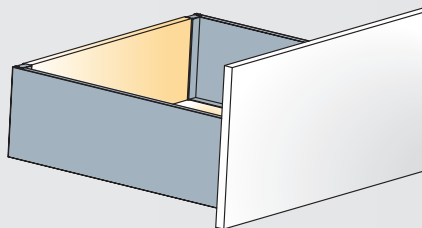
Tekform slimline drawer DW100

16



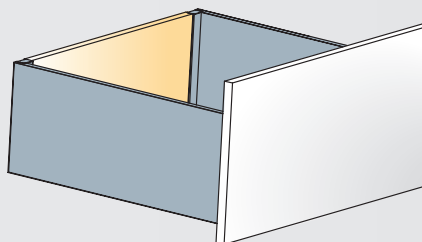
Tekform slimline drawer DW145

18



Tekform slimline drawer DW182

22



Tekform Slimline Drawer Information

Technical Guide

How to choose the appropriate drawer dimension?

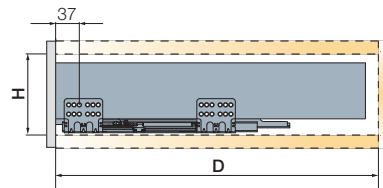
Select the drawer size based on available cabinet space. Please refer to the chart below with indicated minimum space

required in cabinet to choose appropriate drawer system.

Tekform drawer nominal length (NL) in mm

NL	270	300	350	400	450	500	550
----	-----	-----	-----	-----	-----	-----	-----

	Tekform drawer	
	Min. height H required	Cabinet depth D
Tekform slimline drawer DW70	115mm	NL+min 3mm
Tekform slimline drawer DW100	147mm	NL+min 3mm
Tekform slimline drawer DW145	198mm	NL+min 3mm
Tekform slimline drawer DW182	230mm	NL+min 3mm



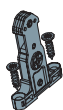
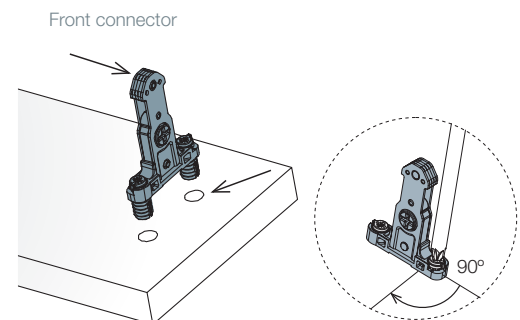
How to fix drawer sides to the front panel?



'EasyFix' front connector

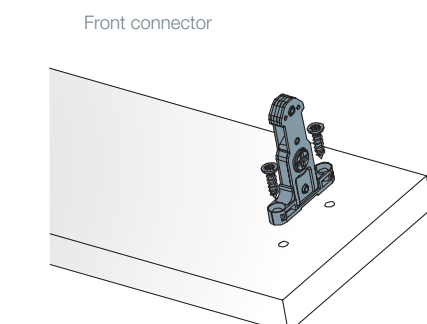
The Tekform drawer is available with 'EasyFix' or screw-in front connectors

- hand insertion
- quarter turn locking system
- expandable plastic dowel
- easy assembly and disassembly of front panel



Screw-in front connector

- reliable connection
- fixing with Ø3.5x15mm screw (screws are not included)



Bottom panel and back panel cutting dimensions

Dimensions of bottom and back panel depends on:

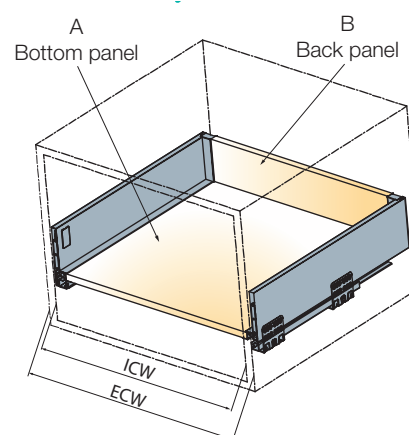
- cabinet width
- nominal drawer length
- drawer height

Tekform drawer nominal length (NL) in mm

NL	270	300	350	400	450	500	550
----	-----	-----	-----	-----	-----	-----	-----

Cabinet width

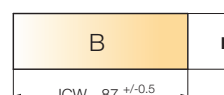
ECW: External cabinet width
ICW: Internal cabinet width
NL: Nominal length of drawer



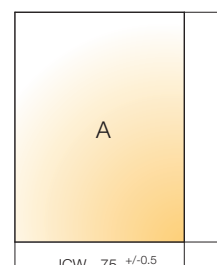
Back panel cutting dimension

Back panel height depends on the selected drawer height

	H back panel
SDW70	68
SDW100	100
SDW145	151
SDW182	183



Bottom panel cutting dimensions



NL	270	300	350	400	450	500	550
L	260	290	340	390	440	490	540

NL= Tekform drawer nominal length (in mm)

Tekform Slimline Drawer Information

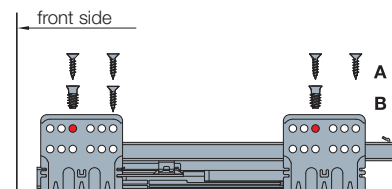
Technical Guide

How to choose the appropriate drawer runner fixing positions?

Drawer fixing positions depend on the chosen drawer front type.

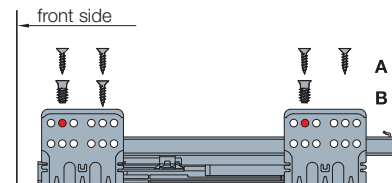
Tekform slimline drawer with standard front

When a standard drawer front is applied, use the third hole on the drawer runner for fixing.



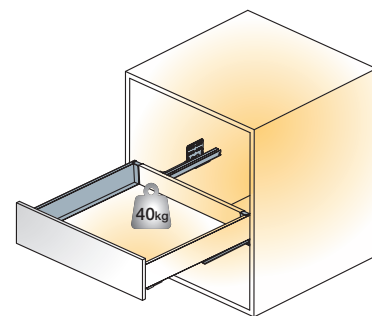
Tekform slimline drawer with inner front

When an inner drawer front is applied, use the second hole on the drawer runner for fixing.



Load capacity

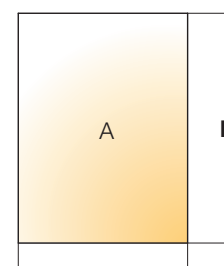
Drawer load capacity is 40 kg.



Expanded tolerances

Tekform drawers provide expanded tolerances in cabinet construction and assures:

- precise drawer alignment
- smooth and silent operating
- Improved drawer stability in open position
- Tekform drawer provides tolerance of +/-1mm on bottom panel width size



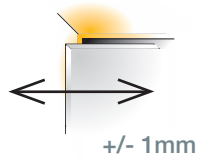
bottom panel width tolerance +/- 1mm



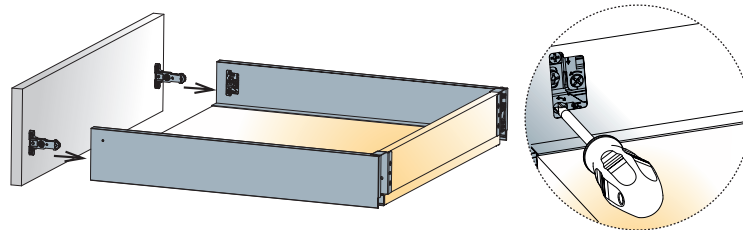
Adjustment needs to be done on both sides of the drawer

Adjustments

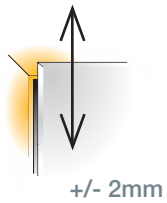
Side adjustment



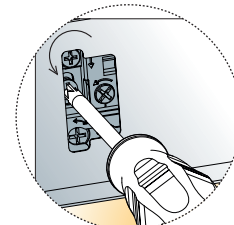
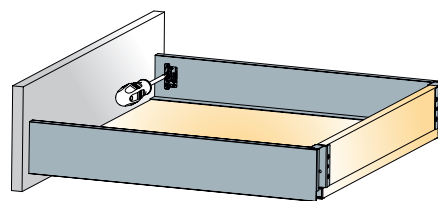
Side adjustment is done via the adjustment screw on the drawer side.



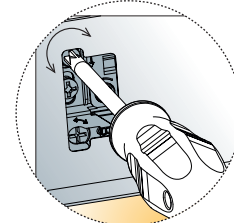
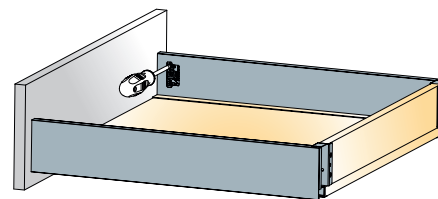
Height adjustment



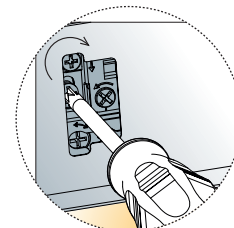
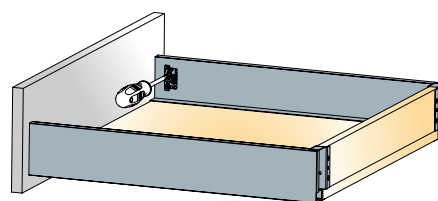
Height adjustment is done via the cam. First, release the locking screw and tighten it back after the front is adjusted.



Release



Adjust

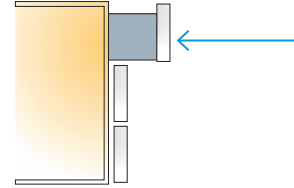


Tighten

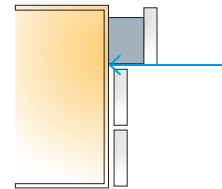
Key Design Choices

'ConfidentClose'

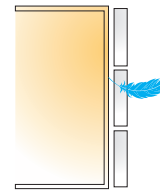
Fast closing



Late start of damping



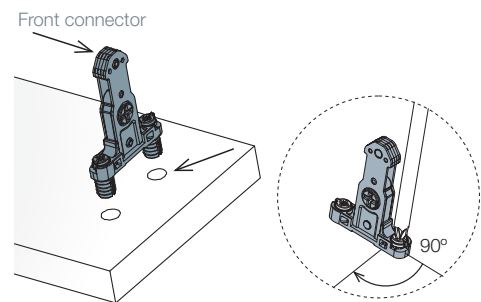
Quiet landing



CAF Consumer Assembly Friendliness

'EasyFix' front panel connector with expandable plastic dowel provides:

- Quick, tool-free assembly
- Quarter turn lock
- Repeatable assembly and disassembly



Titus hydraulic damper

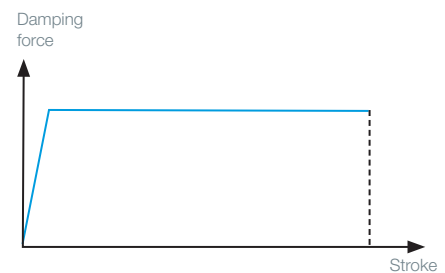
Designed and produced in-house

- Reliable and consistent life-long damping
- Smooth closing
- Dampers' consistency over high volume production runs assured
- 100% automated quality check



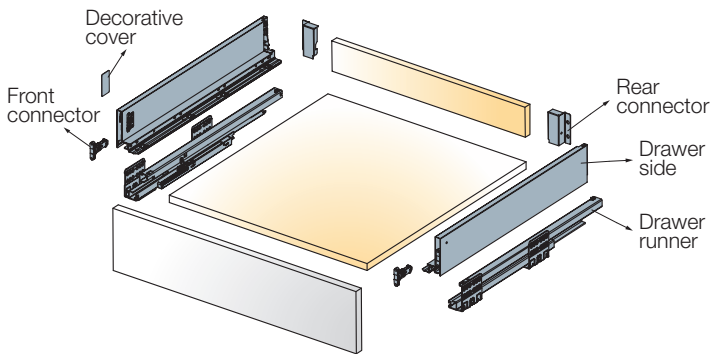
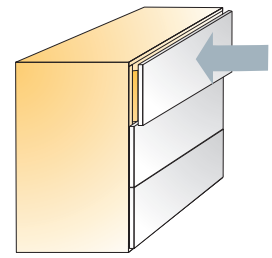
Damping action

Even and smooth soft closing action
- Soft and reliable closing

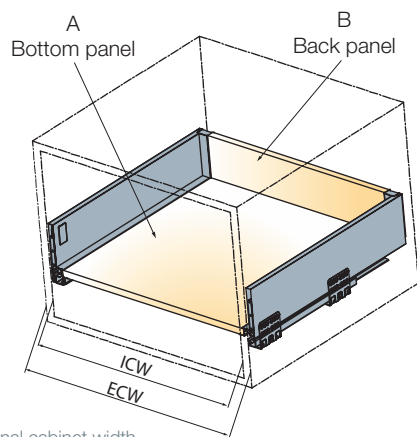


Flat damping curve shows the uniform action produced during damper closing at a defined speed.

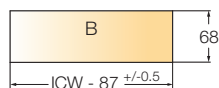
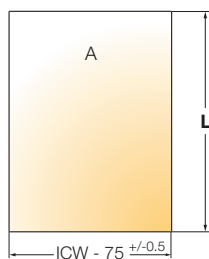
Tekform Slimline Drawer DW70



Cutting dimensions details



ECW: External cabinet width
ICW: Internal cabinet width
NL: Nominal length of drawer



$L = NL - 10$
For further explanation → see page 9



4 sets

Nominal length (mm)	with EasyFix front connector	with Screw-in front connector		
	Item number for a set	Item number for a set	White	Anthracite grey
270	655.8T27 →	655.8E27 →	150	185
300	655.8T30 →	655.8E30 →	150	185
350	655.8T35 →	655.8E35 →	150	185
400	655.8T40 →	655.8E40 →	150	185
450	655.8T45 →	655.8E45 →	150	185
500	655.8T50 →	655.8E50 →	150	185
550	655.8T55 →	655.8E55 →	150	185

One set consists of

Drawer sides 2 pcs



Drawer runners 2 pcs



*Front connectors 2 pcs



Rear connectors 2 pcs



Covers 2 pcs



2 pcs

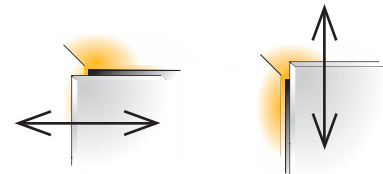
Mounting instructions 1 pc



Screws are not included

- Drawer runner type
- Load capacity
- Minimum height space required
- Wooden back panel thickness
- Wooden bottom panel thickness

full extension
40 kg
115mm
16mm
16mm



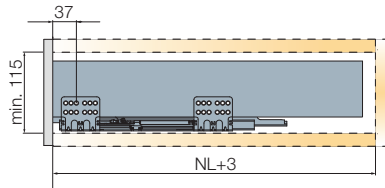
Side adjustment
+1/-1mm

Height adjustment
+2/-2mm

For further explanation → see page 11

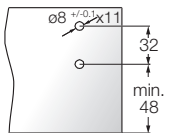
Installation dimensions

Minimum space required for the cabinet

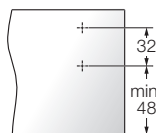


Drilling dimensions for the front panel

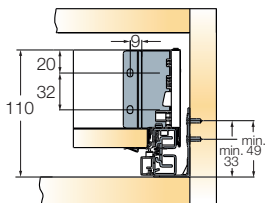
EasyFix attachment



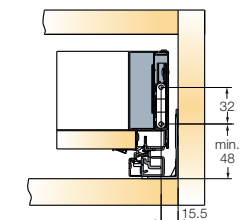
Screw-in attachment



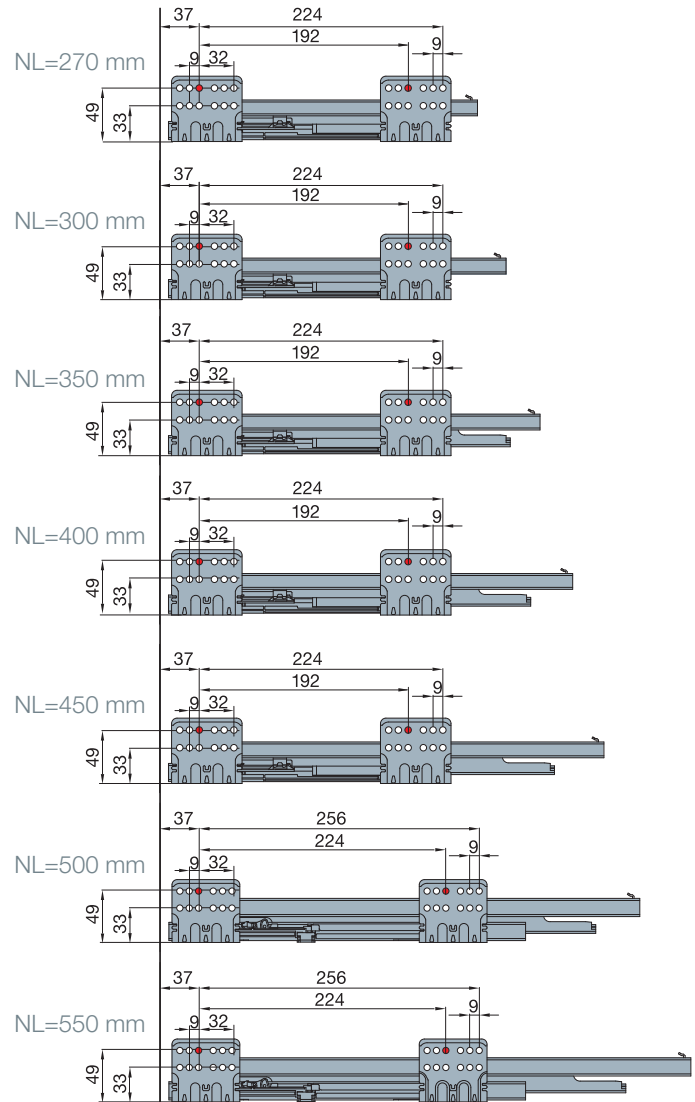
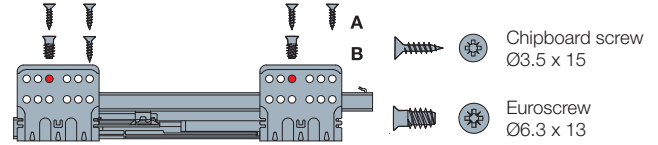
Mounting dimensions for the back panel



Installation dimensions for the front panel

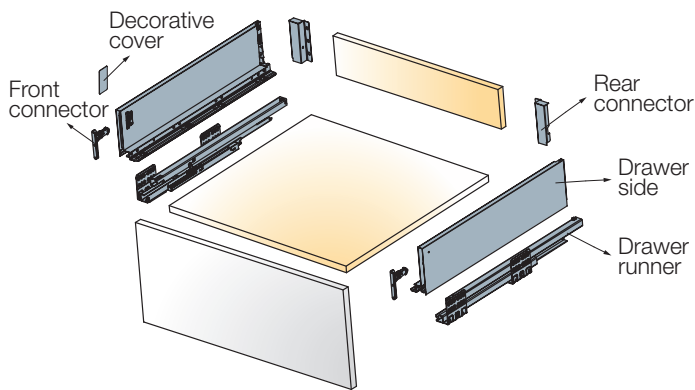
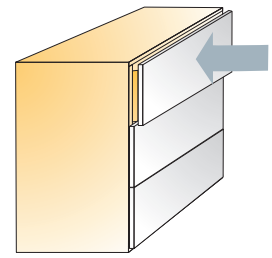


Drawer runner fixing positions

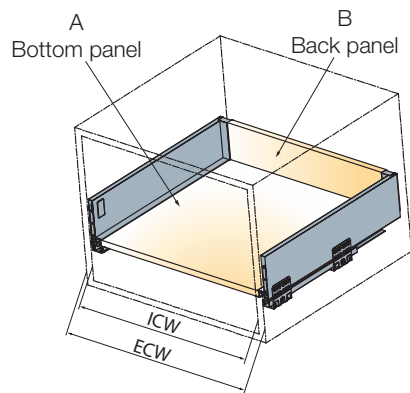


A trial mounting is always recommended.
For further information please contact your
Titus Group representative.

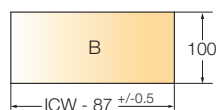
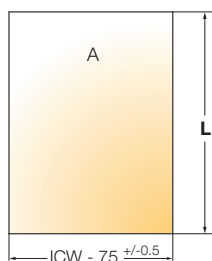
Tekform Slimline Drawer DW100



Cutting dimensions details



ECW: External cabinet width
ICW: Internal cabinet width
NL: Nominal length of drawer



$L = NL - 10$
For further explanation → see page 9

Nominal length (mm)	with EasyFix front connector	with Screw-in front connector		
	Item number for a set	Item number for a set	White	Anthracite grey

270	655.8U27 →	655.8F27 →	150	185
300	655.8U30 →	655.8F30 →	150	185
350	655.8U35 →	655.8F35 →	150	185
400	655.8U40 →	655.8F40 →	150	185
450	655.8U45 →	655.8F45 →	150	185
500	655.8U50 →	655.8F50 →	150	185
550	655.8U55 →	655.8F55 →	150	185

One set consists of

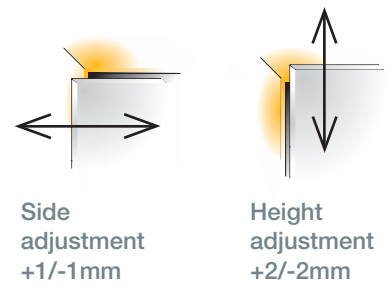
Drawer sides		2 pcs
Drawer runners		2 pcs
*Front connectors		2 pcs
Rear connectors		2 pcs
Covers		2 pcs
Mounting instructions		1 pc

4 sets

Screws are not included

- Drawer runner type
- Load capacity
- Minimum height per drawer required
- Wooden back panel thickness
- Wooden bottom panel thickness

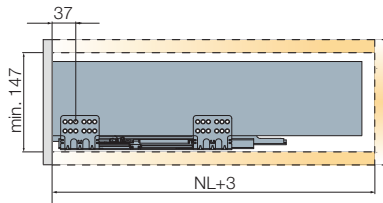
full extension
40 kg
147mm
16mm
16mm



For further explanation → see page 11

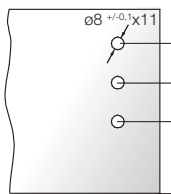
Installation dimensions

Minimum space required for the cabinet

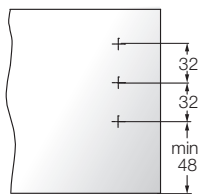


Drilling dimensions for the front panel

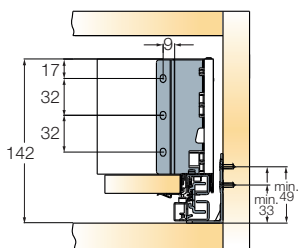
EasyFix attachment



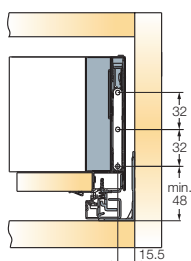
Screw-in attachment



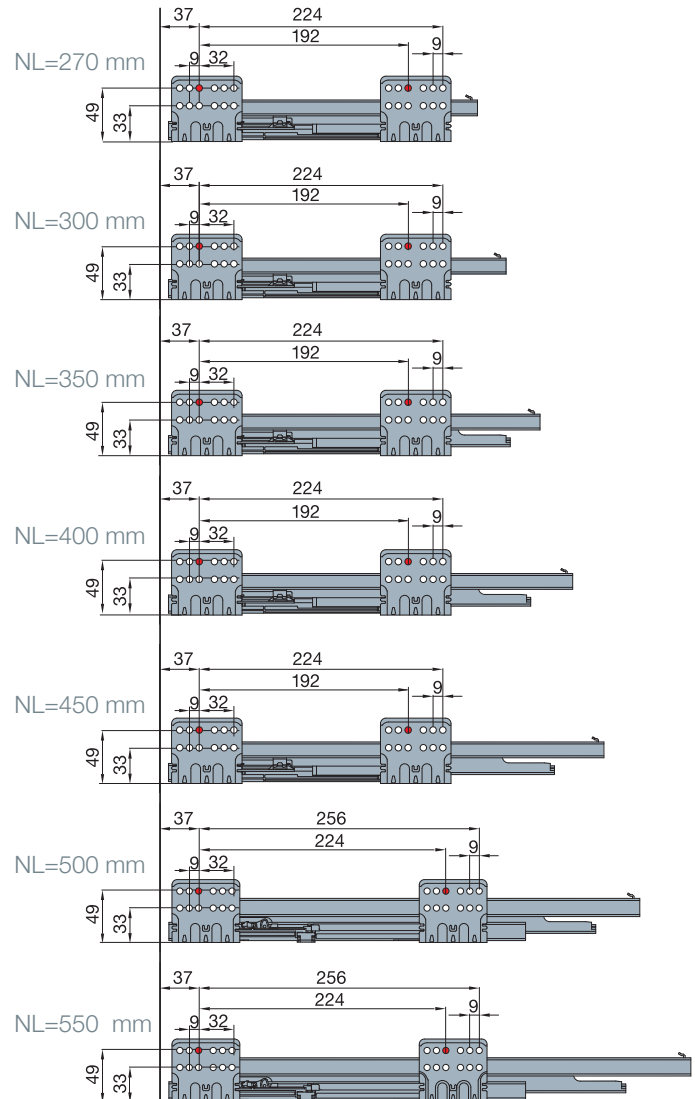
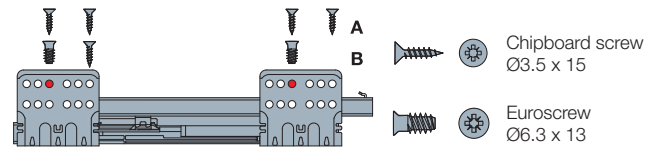
Mounting dimensions for the back panel



Installation dimensions for the front panel

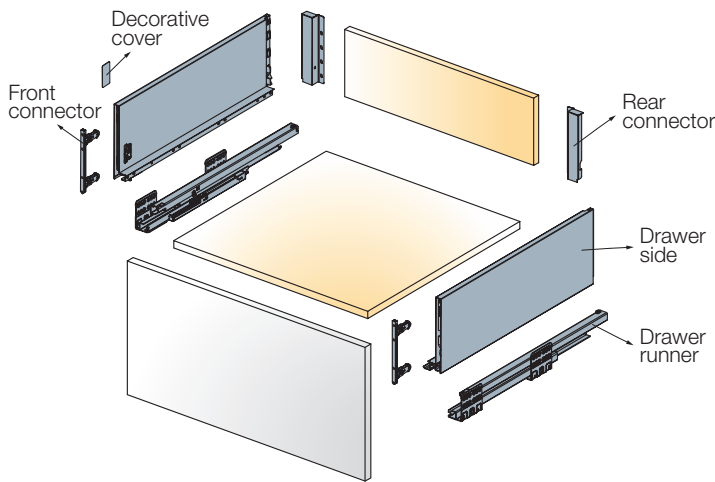
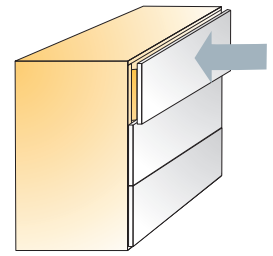


Drawer runner fixing positions

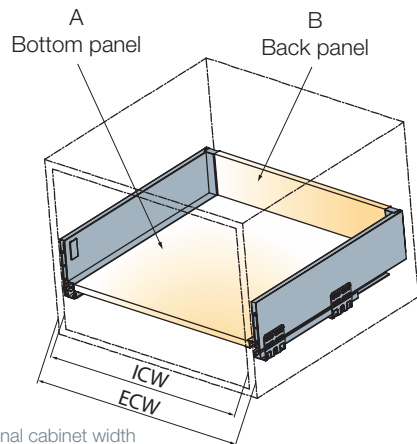


A trial mounting is always recommended.
For further information please contact your
Titus Group representative.

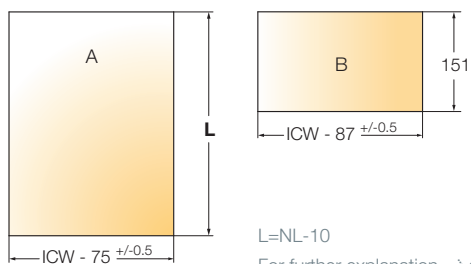
Tekform Slimline Drawer DW145



Cutting dimensions details



ECW: External cabinet width
ICW: Internal cabinet width
NL: Nominal length of drawer



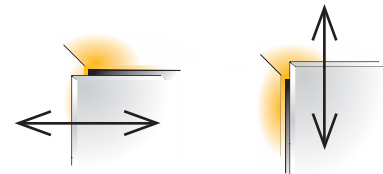
Nominal length (mm)	with EasyFix front connector	with Screw-in front connector		
	Item number for a set	Item number for a set	White	Anthracite grey
270	655.8V27 →	655.8G27 →	150	185
300	655.8V30 →	655.8G30 →	150	185
350	655.8V35 →	655.8G35 →	150	185
400	655.8V40 →	655.8G40 →	150	185
450	655.8V45 →	655.8G45 →	150	185
500	655.8V50 →	655.8G50 →	150	185
550	655.8V55 →	655.8G55 →	150	185
One set consists of				
	Drawer sides			2 pcs
	Drawer runners			2 pcs
	*Front connectors			2 pcs
	Rear connectors			2 pcs
	Covers			2 pcs
	Mounting instructions			1 pc

4 sets

Screws are not included

- Drawer runner type
- Load capacity
- Minimum height per drawer required
- Wooden back panel thickness
- Wooden bottom panel thickness

full extension
40 kg
198mm
16mm
16mm



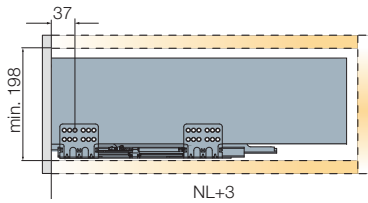
Side adjustment
+1/-1mm

Height adjustment
+2/-2mm

For further explanation → see page 11

Installation dimensions

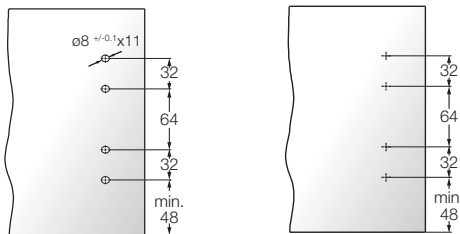
Minimum space required for the cabinet



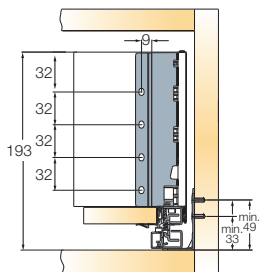
Drilling dimensions for the front panel

EasyFix attachment

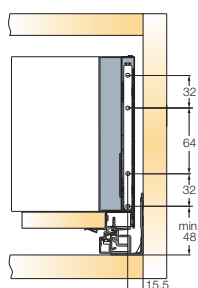
Screw-in attachment



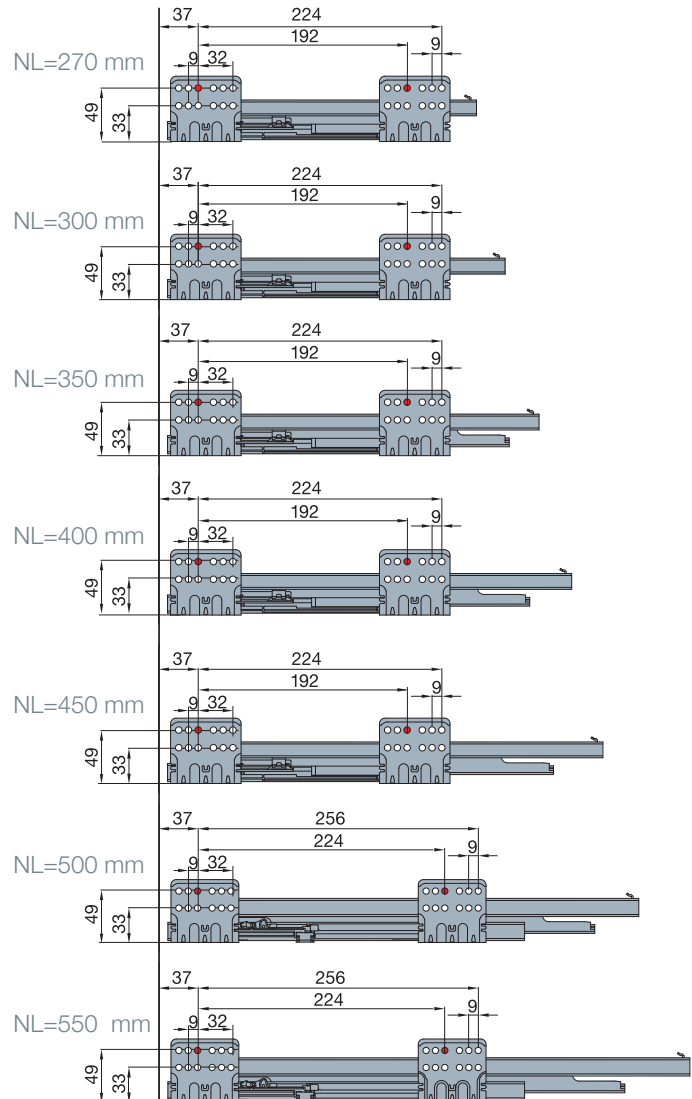
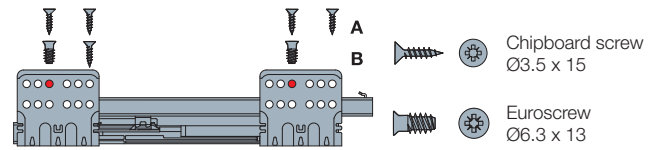
Mounting dimensions for the back panel



Installation dimensions for the front panel

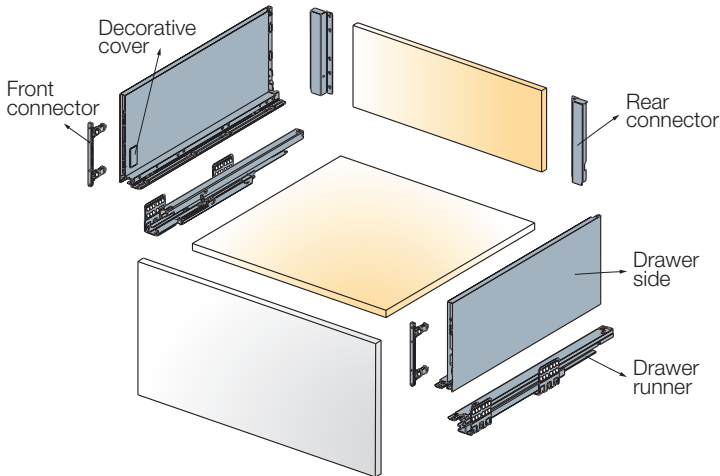
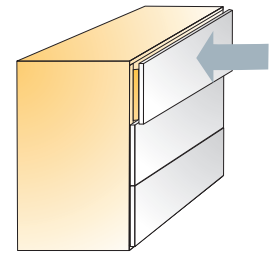


Drawer runner fixing positions

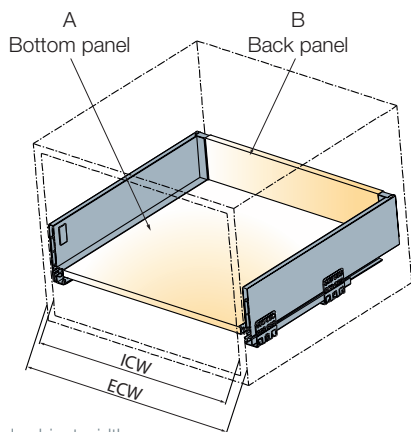


A trial mounting is always recommended.
For further information please contact your Titus Group representative.

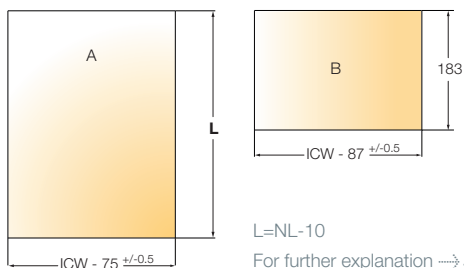
Tekform Slimline Drawer DW182



Cutting dimensions details



ECW: External cabinet width
ICW: Internal cabinet width
NL: Nominal length of drawer



Nominal length (mm)	with EasyFix front connector	with Screw-in front connector		
	Item number for a set	Item number for a set	White	Anthracite grey
270	655.8Z27 →	655.8H27 →	150	185
300	655.8Z30 →	655.8H30 →	150	185
350	655.8Z35 →	655.8H35 →	150	185
400	655.8Z40 →	655.8H40 →	150	185
450	655.8Z45 →	655.8H45 →	150	185
500	655.8Z50 →	655.8H50 →	150	185
550	655.8Z55 →	655.8H55 →	150	185

One set consists of

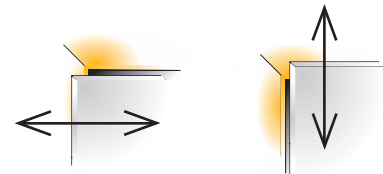
Drawer sides		2 pcs
Drawer runners		2 pcs
*Front connectors		2 pcs
Rear connectors		2 pcs
Covers		2 pcs
Mounting instructions		1 pc

4 sets

Screws are not included

- Drawer runner type
- Load capacity
- Minimum height per drawer required
- Wooden back panel thickness
- Wooden bottom panel thickness

full extension
40kg
230mm
16mm
16mm



Side adjustment
+1/-1mm

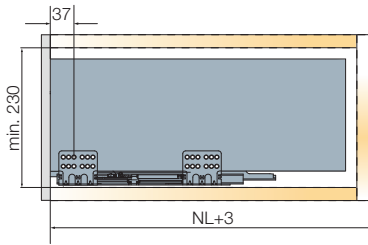
Height adjustment
+2/-2mm

For further explanation → see page 11

Installation dimensions

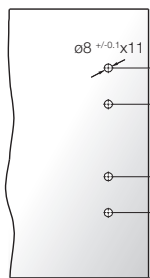
Drawer runner fixing positions

Minimum space required for the cabinet

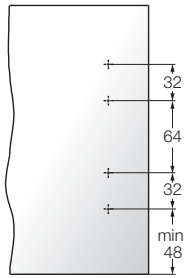


Drilling dimensions for the front panel

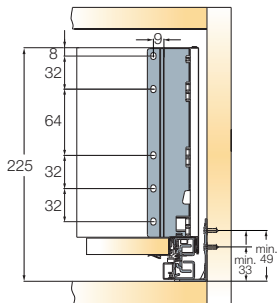
EasyFix attachment



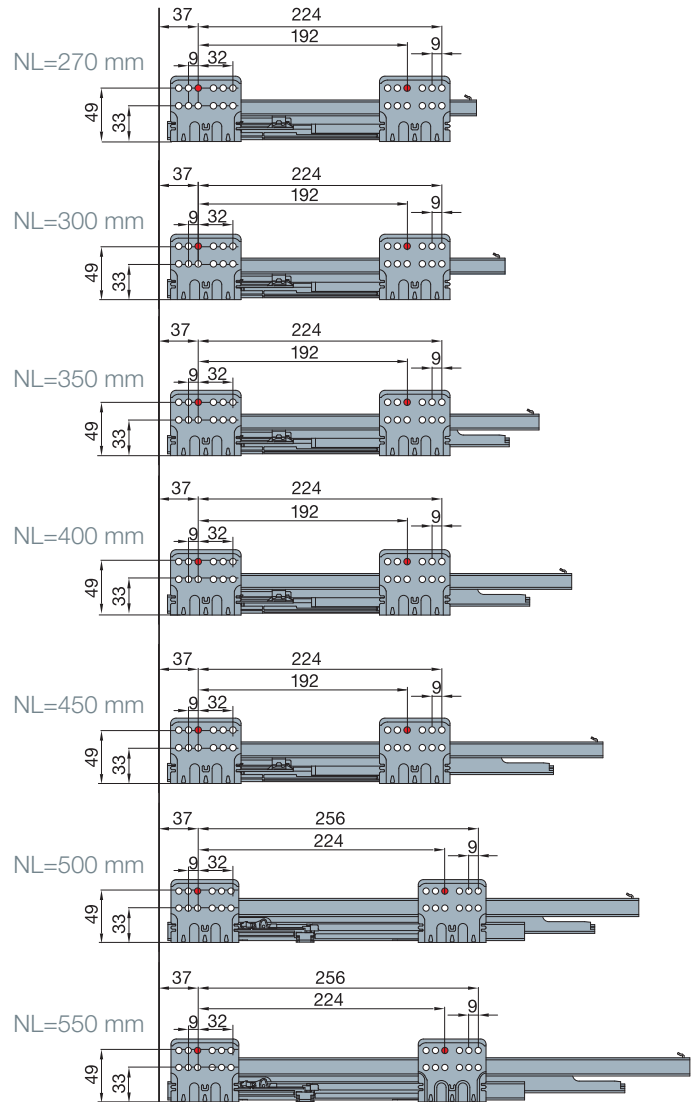
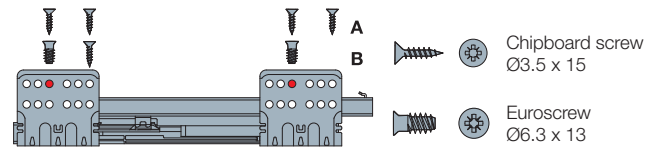
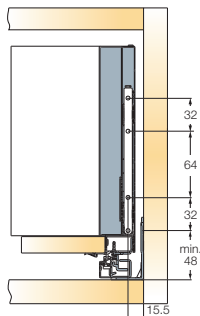
Screw-in attachment



Mounting dimensions for the back panel



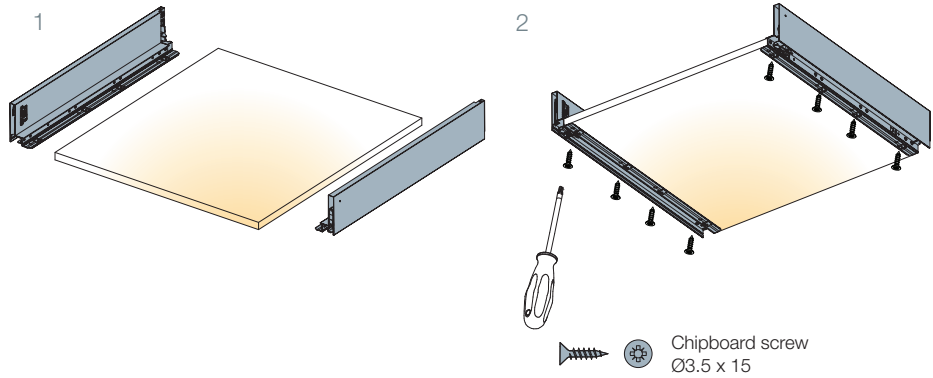
Installation dimensions for the front panel



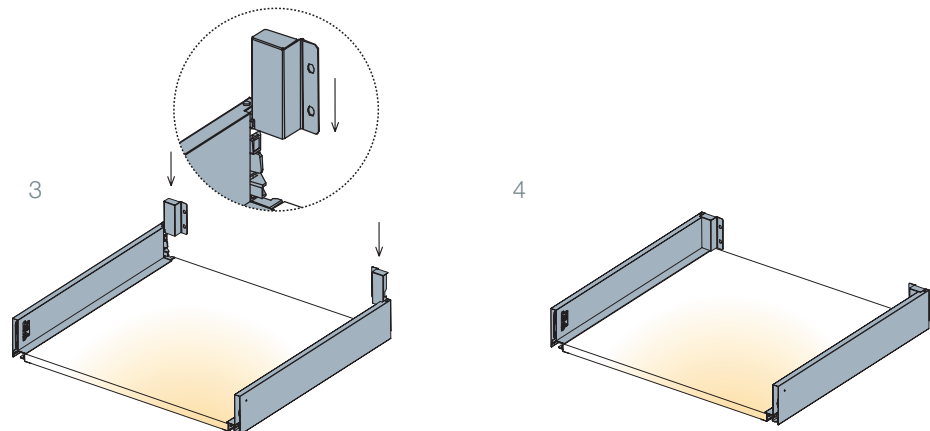
A trial mounting is always recommended.
For further information please contact your
Titus Group representative.

Assembly Sequence

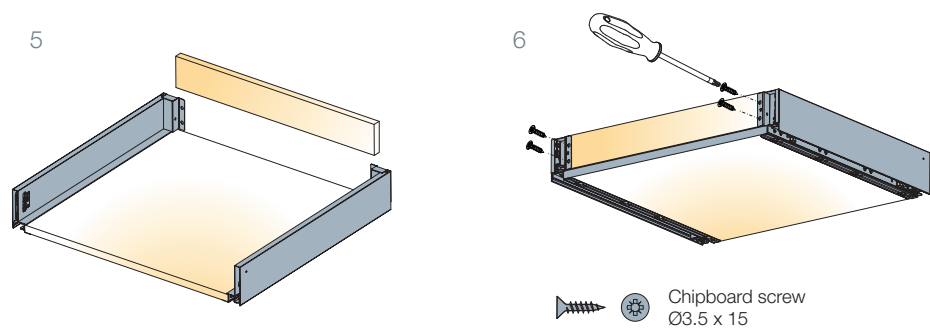
Connect the drawer sides to the bottom panel (1) and fix it with screws (2)



Insert the rear connector vertically (3) and push it downwards into recess in the drawer side (4)



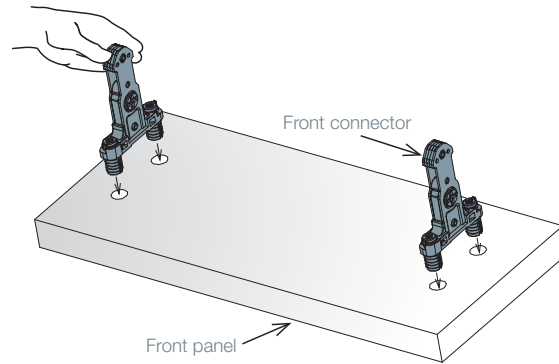
Insert the back panel (5) and fix it with screws (6)



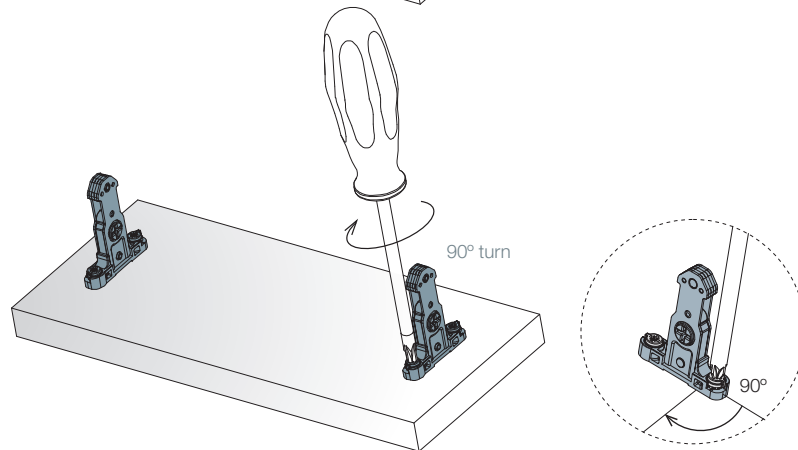
Insertion of Front Connectors

EasyFix

Insert the front connectors into holes on the front panel

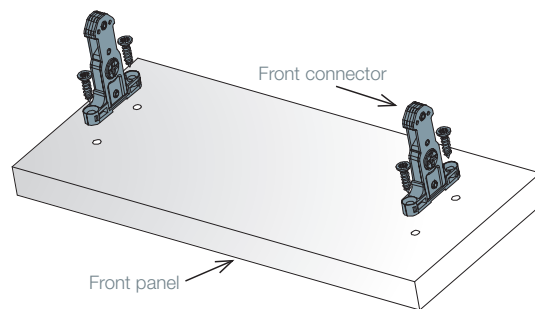


Turn the screws 90° into locked position

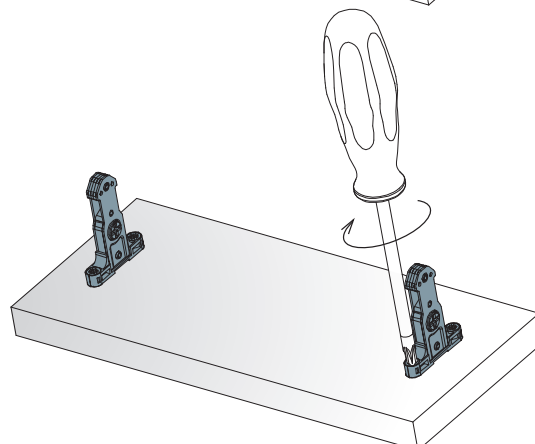


Screw-in fixing

Use Ø3 x 15mm screws for fixing



 Chipboard screw
Ø3.5 x 15

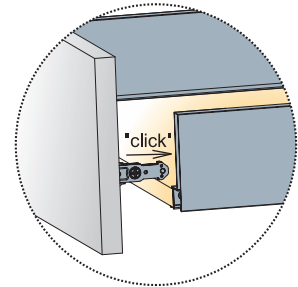
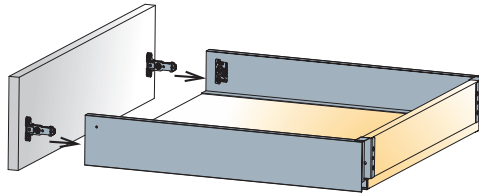


Assembly Instructions

Front Panel Mounting / Removal

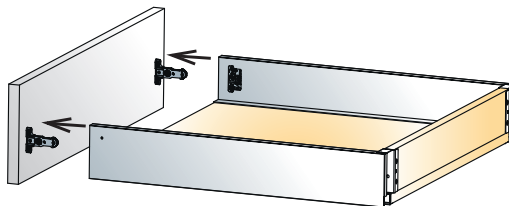
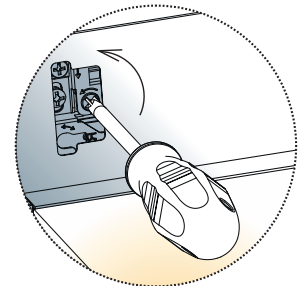
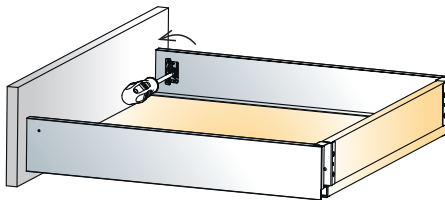
Mounting

Attach the front panel to the drawer and press to click



Removal

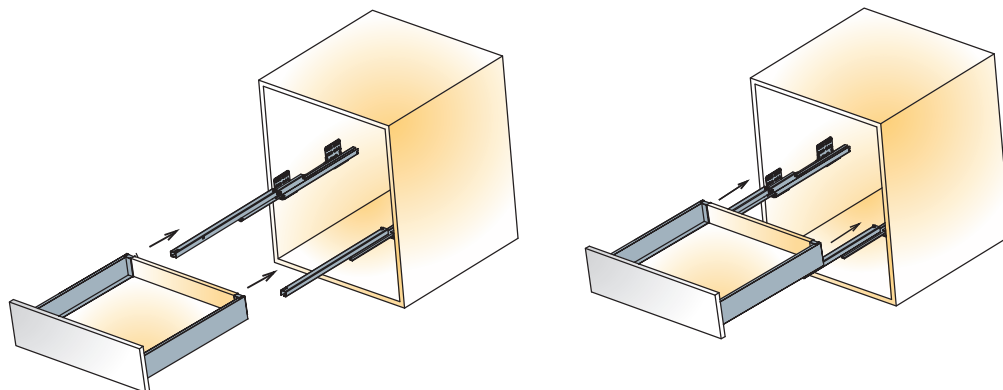
Rotate the screw towards the front panel to disengage



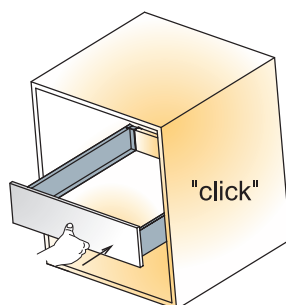
Drawer Insertion / Removal

Insertion

Place the drawer horizontally on the runners and push towards the cabinet until you hear the drawer is locked

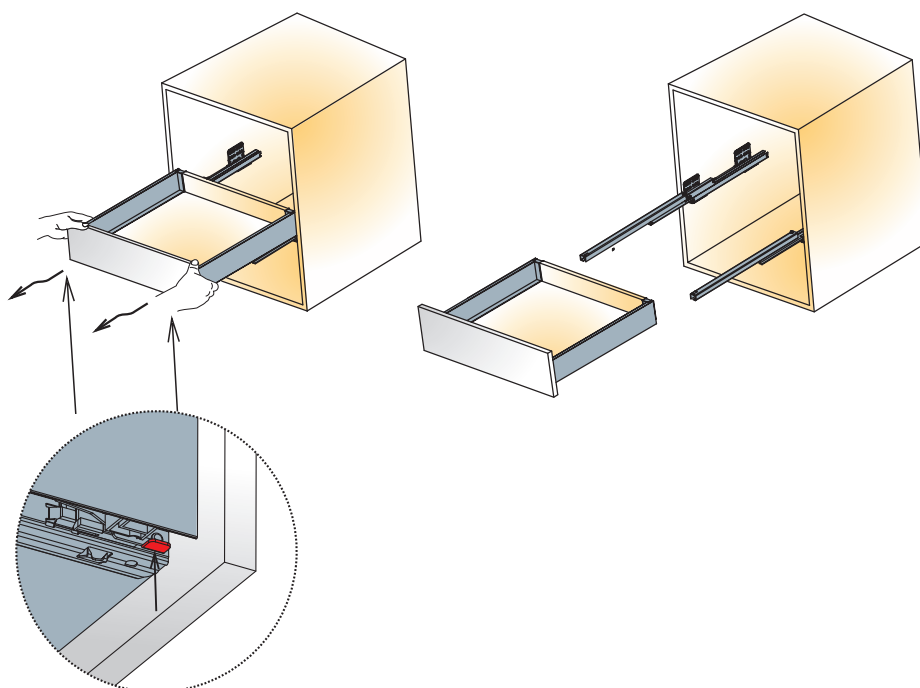


Push to fully close



Removal

Press-up the button under the drawer. Keep pressed to pull the drawer out



Press-up

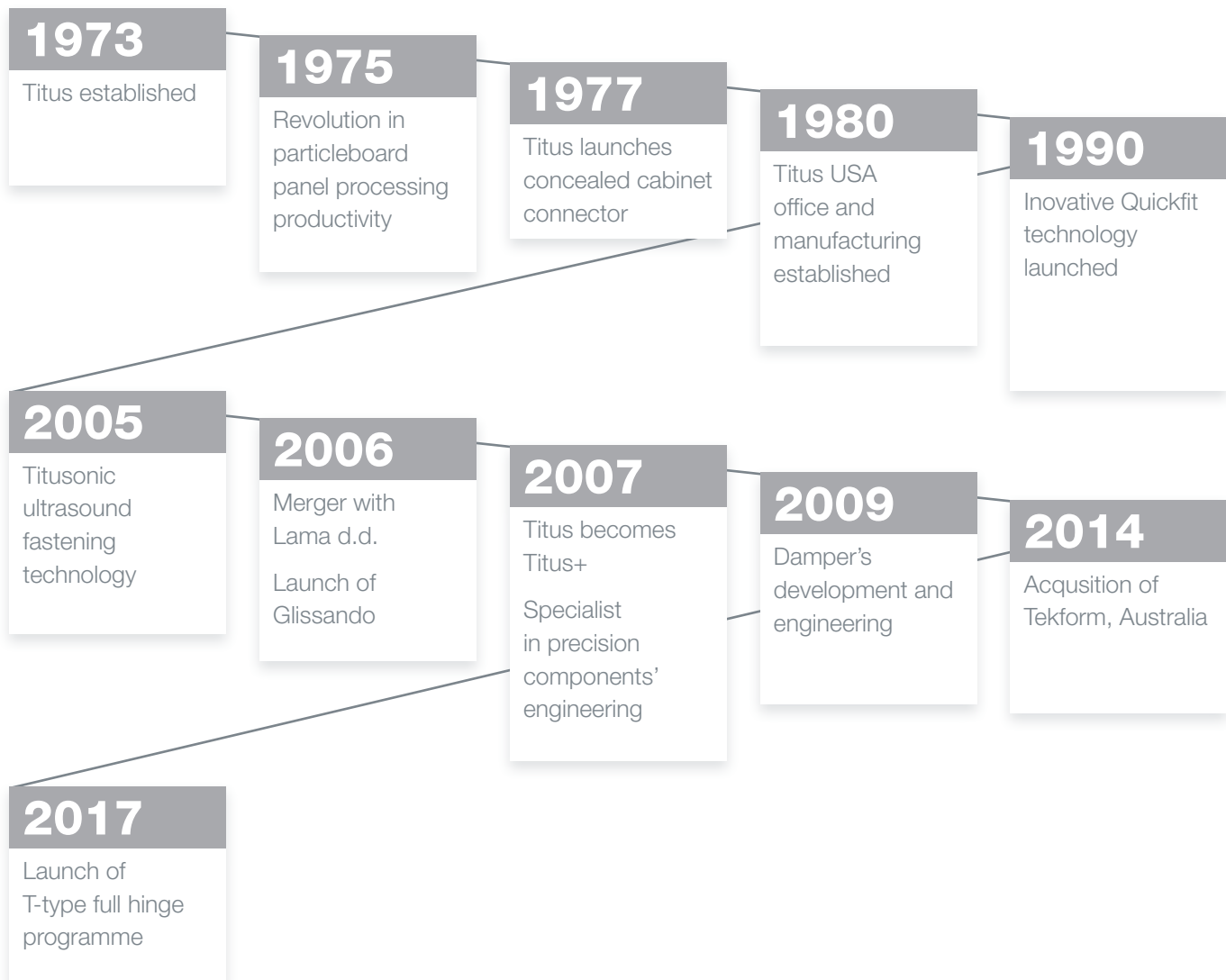
The Titus Group Profile

Titus Group

Titus focuses on the design, manufacture and distribution of connectors, concealed hinges drawers and soft closing mechanisms in furniture and household appliances.

Titus Group is owned and managed from its headquarters in United Kingdom. We are able to provide products and services to every customer around the world based on manufacturing facilities in Europe, North America, China, SE Asia, Australia and New Zealand.

Quickfit technology makes Titus the World leader in connectors for RTA furniture



Titus Tekform

Vision

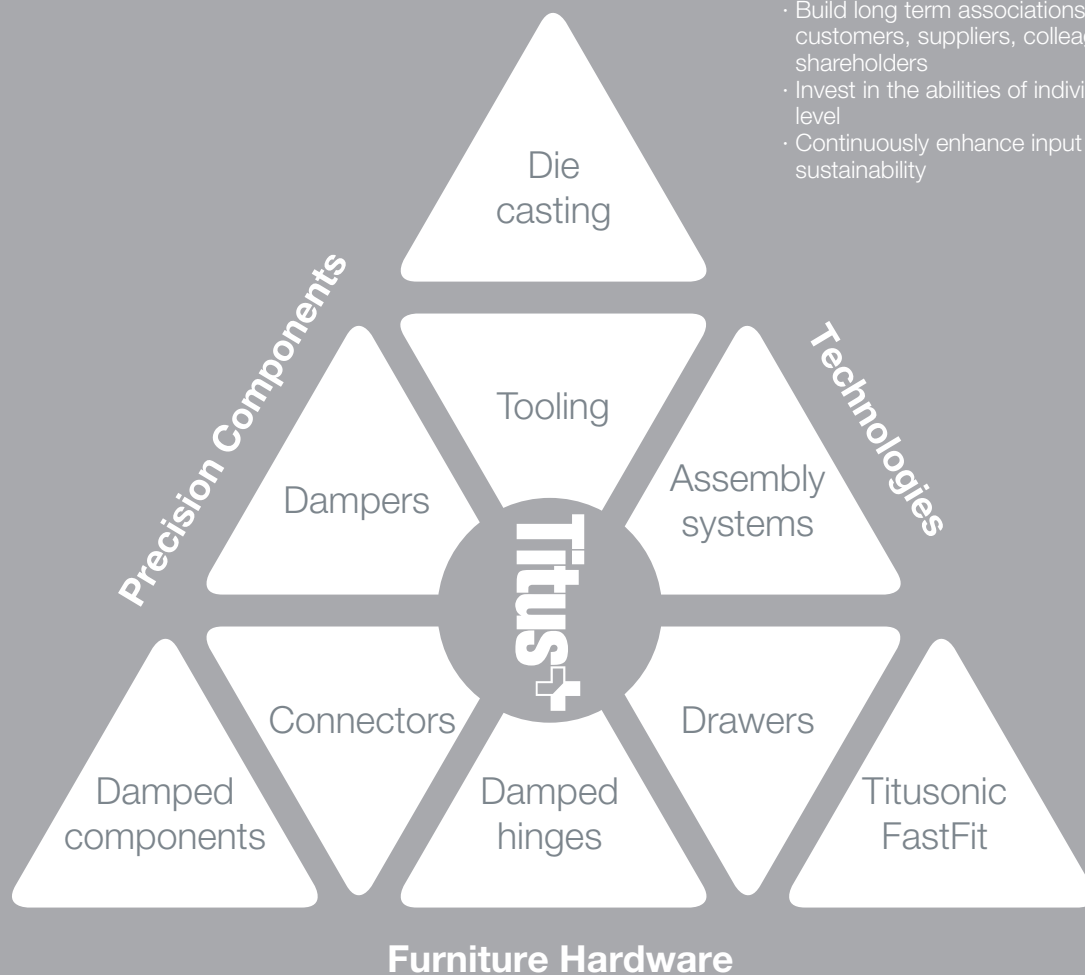
To be the supplier of choice to the Australasian kitchen manufacturing, cabinet making and shop-fitting industries

Mission

To provide customers with solutions that improve their competitiveness

Titus Business Philosophies and Principles

- Gain total knowledge of our customers and their markets
- Meet our customers' expectations with global consistency
- Build long term associations with customers, suppliers, colleagues and shareholders
- Invest in the abilities of individuals at every level
- Continuously enhance input efficiency and sustainability



Furniture Hardware

- Cabinet connectors
- Concealed hinges
- Soft closing systems
- Drawers and drawer systems
- Kitchen accessories
- Furniture locks
- Decorative

Components

- Dampers
- Precision components

Technologies

- Automation systems
- Precision castings
- Die cast technologies
- Tooling
- Ultrasound fastening technology
- FastFit technology

'Totally Integrated Engineering'

Product Design

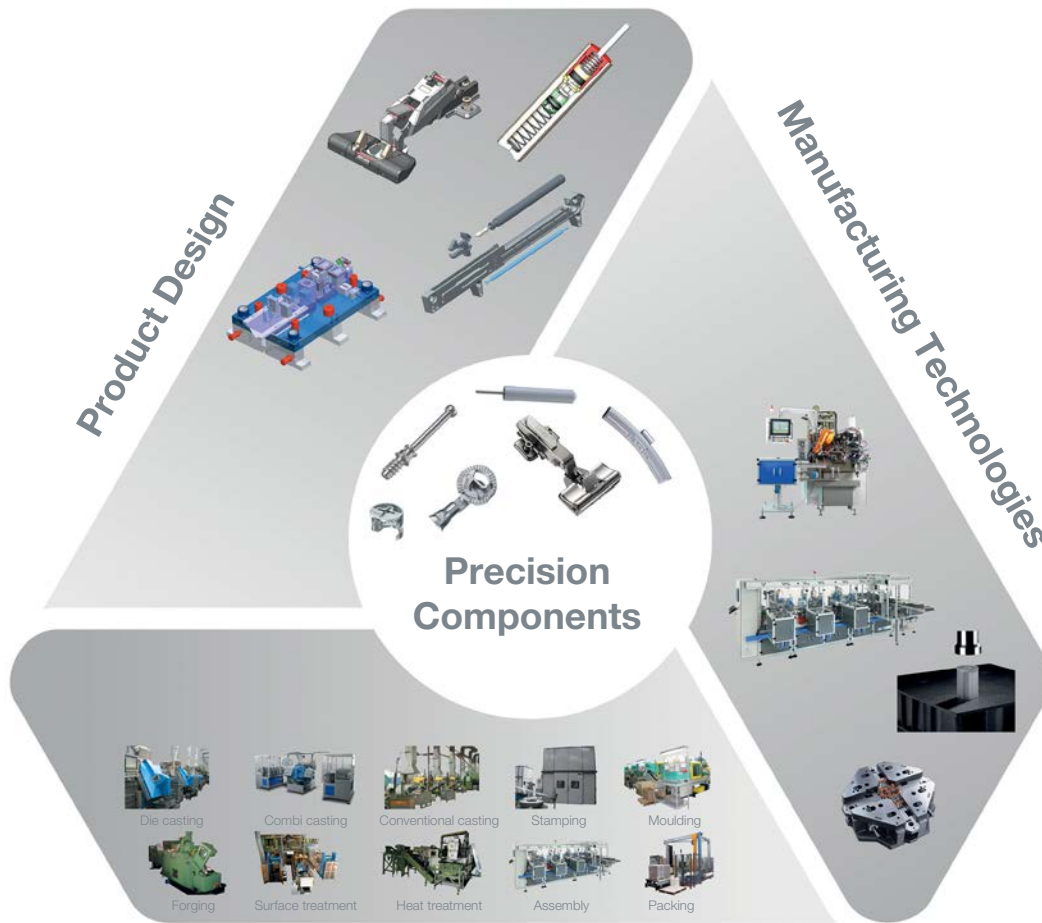
Design and engineering of unique components
Consistent and repeatable product quality

Manufacturing Technologies

to improve productivity and product quality

Manufacturing Operations

A wide array of technologies and services required for high volume production of precision components available in-house



Manufacturing Operations

Fittings for purpose

Unique product advantages for better value for money and lower 'total installed cost'

Innovations that improve

with less parts, less different parts, less preparation actions, faster assembly

Fast time-to-market

Quality

Continuous Improvement

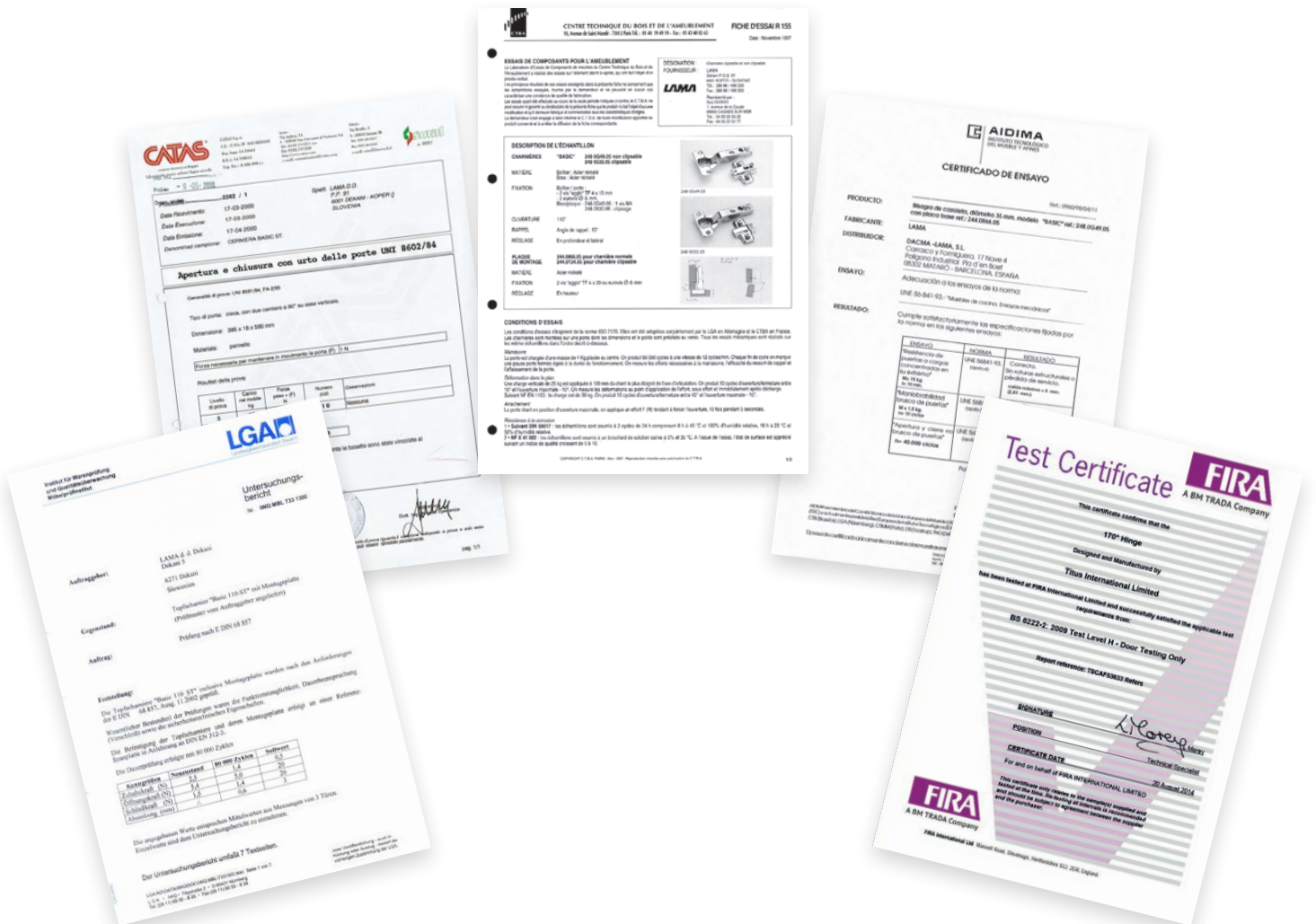
The Titus Group Mission, to improve the competitiveness of our customers, encourages us to continuously improve our products, services, processes and competencies of our employees.

Quality

We believe that the Titus Mission is achieved most effectively through the management of our design, manufacturing and service activities in conformance with the ISO 9001 standard for quality management. Quality has a broad meaning for us: it is our guide to the selection of materials, work, processes, internal relations and cooperation with partners.

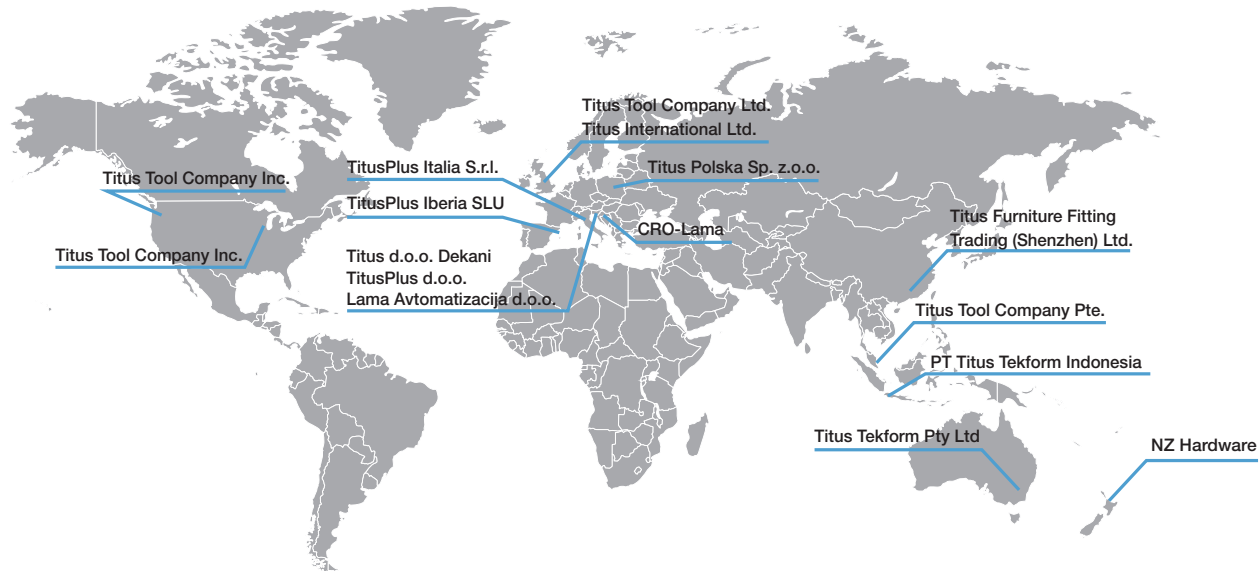
Products

Our integrated quality system produces technically optimized products of high quality. They are assessed regularly in our own test labs as well as by internationally renowned institutions, such as LGA from Germany, CTBA from France, FIRA from United Kingdom, CATAS from Italy, AIDIMA from Spain, and others.



Global player

Worldwide design, manufacturing and distribution capabilities



Victoria

Titus Tekform Pty Ltd
 8/59 Jersey Road
 Bayswater, VIC, 3153
 T: +61 3 9737 5566
 Fax: +61 3 9729 8780

Titus Tekform Pty Ltd
 2/20 Mint Street
 Wodonga, VIC, 3690
 T: +61 2 6056 3188
 Fax: +61 2 6056 3190

South Australia

Titus Tekform Pty Ltd
 PO Box 357, Bayswater,
 VIC, 3153
 T: +61 8 8447 3700
 Fax: +61 8 8447 318

Tasmania

Titus Tekform Pty Ltd
 88 Hopkins Street
 Moonah, TAS, 7009
 T: +61 3 6273 1199
 Fax: +61 3 6273 0050

New South Wales

Titus Tekform Pty Ltd
 Unit 1&2, 41-43 Whyalla Place
 Prestons, NSW, 2170
 T: +61 2 9826 0007
 Fax: +61 2 9826 0074

Titus Tekform Pty Ltd
 Unit 3, 100 Munibung Road
 Cardiff, NSW, 2285
 T: +61 2 4954 4011
 Fax: +61 2 4354 4233

Queensland

Titus Tekform Pty Ltd
 76 Northlink Place
 Virginia, QLD, 4014
 T: +61 7 3266 3999
 Fax: +61 7 3266 5234

Titus Tekform Pty Ltd
 20 Civil Road
 Garbutt, QLD, 4814
 T: +61 7 4779 1366
 Fax: +61 7 4779 1316

New Zealand

Stefano Orlati
 34 Waipareira Avenue
 Henderson, Auckland
 T: +64 9 837 0886
 Fax: +64 9 837 8003

Stefano Orlati
 162 Wordsworth Street
 Sydenham, Christchurch
 T: +64 9 981 8518
 Fax: +64 9 942 7296

www.titustekform.cm.au.com
info@titustekform.com.au

Index

Item number	Page
655.8E27	14
655.8E30	14
655.8E35	14
655.8E40	14
655.8E45	14
655.8E50	14
655.8E55	14
655.8F27	16
655.8F30	16
655.8F35	16
655.8F40	16
655.8F45	16
655.8F50	16
655.8F55	16
655.8G27	18
655.8G30	18
655.8G35	18
655.8G40	18
655.8G45	18
655.8G50	18
655.8G55	18
655.8H27	20
655.8H30	20
655.8H35	20
655.8H40	20
655.8H45	20
655.8H50	20
655.8H55	20
655.8T27	14
655.8T30	14
655.8T35	14
655.8T40	14
655.8T45	14
655.8T50	14
655.8T55	14
655.8U27	16
655.8U30	16
655.8U35	16
655.8U40	16
655.8U45	16
655.8U50	16
655.8U55	16
655.8V27	18
655.8V30	18
655.8V35	18
655.8V40	18
655.8V45	18
655.8V50	18
655.8V55	18
655.8Z27	20
655.8Z30	20
655.8Z35	20
655.8Z40	20
655.8Z45	20
655.8Z50	20
655.8Z55	20

Your authorized dealer