

# SV-X70

## Compact Glass Sliding System

### Technical Details

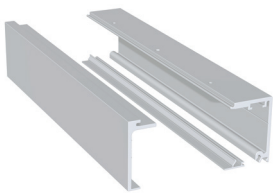
- Compact sliding door system
- Suitable for 8 and 10mm glass
- Can support up to 70kg glass doors
- System has been tested to 100,000 cycles
- Variety of braking systems
- Tracks can be mounted to the wall, ceiling or recessed into the ceiling
- Tracks available with a glazing pocket for fixed panels.

### Available Finishes

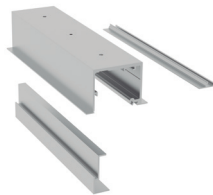
- Satin Anodised Aluminium



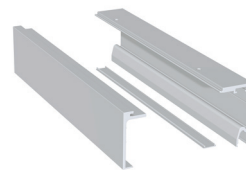
### TRACK OPTIONS



SV-X70-TRACK-1  
Wall/Ceiling Mount



SV-X70-TRACK-2  
False Ceiling Mount

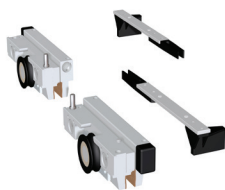


SV-X70-TRACK-3  
Wall/Ceiling Mount  
With Glazing Pocket

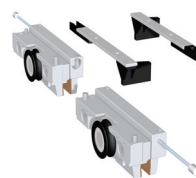


SV-X70-TRACK-4  
False Ceiling Mount  
With Glazing Pocket

### BRAKE OPTIONS



Retaining Brake  
SV-X70-SET-1  
(Double Retaining Brake)



Anti-Shock  
SV-X70-SET-3  
(Double Anti-Shock)

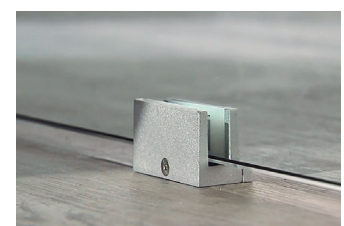


Soft Brake  
SV-X70-SET-6  
(Double Soft Brake)

### OTHER OPTIONS

- SV-X70-SET-2 - 1 x Anti-Shock & 1 x Retaining Brake
- SV-X70-SET-4 - 1 x Retaining Brake & 1 x Soft Brake
- SV-X70-SET-5 - 1 x Anti-Shock & 1 x Soft Brake

### Installation Possibilities



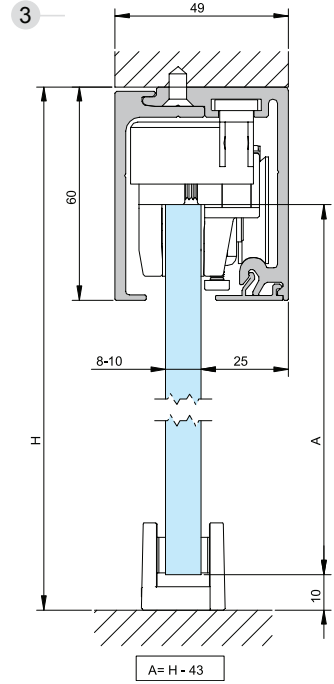
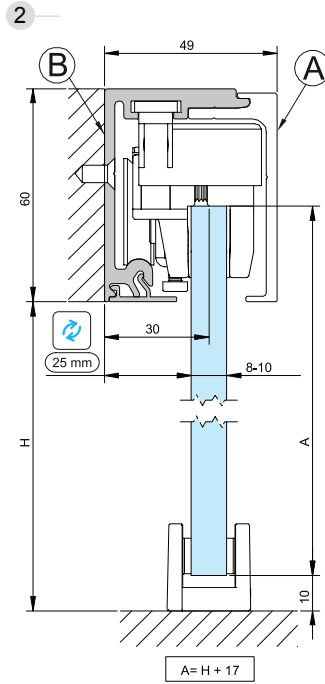
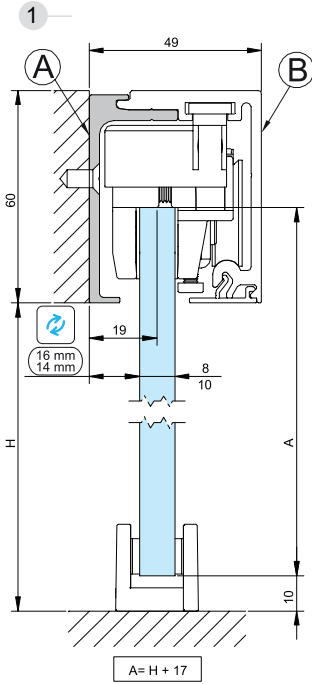
SV-X-FG  
Floor Guide

# SV-X70



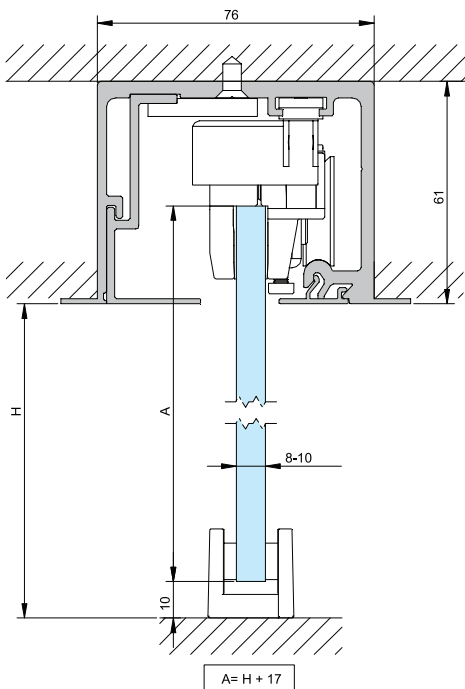
## Track 1

Can be fixed to the wall through either side depending on desired clearance to wall.  
 Can also be mounted to the ceiling



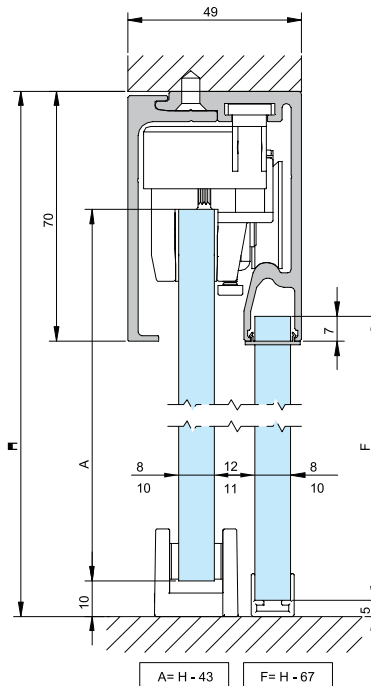
## Track 2

False Ceiling Track



## Track 3

Fixed Panel Adaptor



## Track 4

False Ceiling Mount w/ Fixed Panel

