



Coldbuster tile heating uses a unique 1.5mm thin element, designed for installation directly below tiles, to ensure increased efficiency and a quick response.

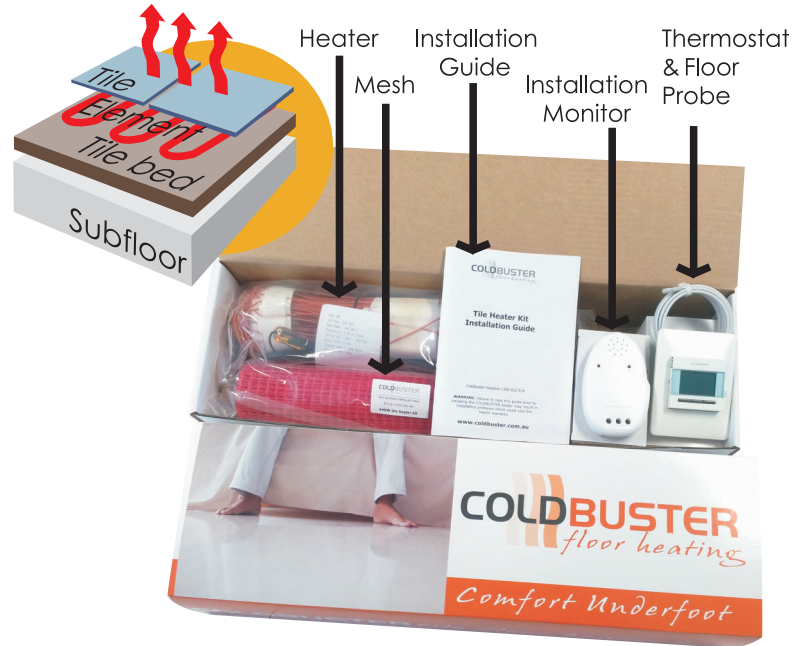
Coldbuster tile heating kits are suited for installation on concrete, screed and suspended timber sub-floors and suitable for under ceramic tiles, slate, porcelain, limestone, marble, terracotta and laminates. Moderate output heaters can also be used under vinyl and timber floors.



Configuration

The Coldbuster tile heater is supplied as a pre-configured strip on a roll. Tape holds the element in consistent spacing and a protective, self adhesive fibreglass mesh is rolled out to cover the heating element.

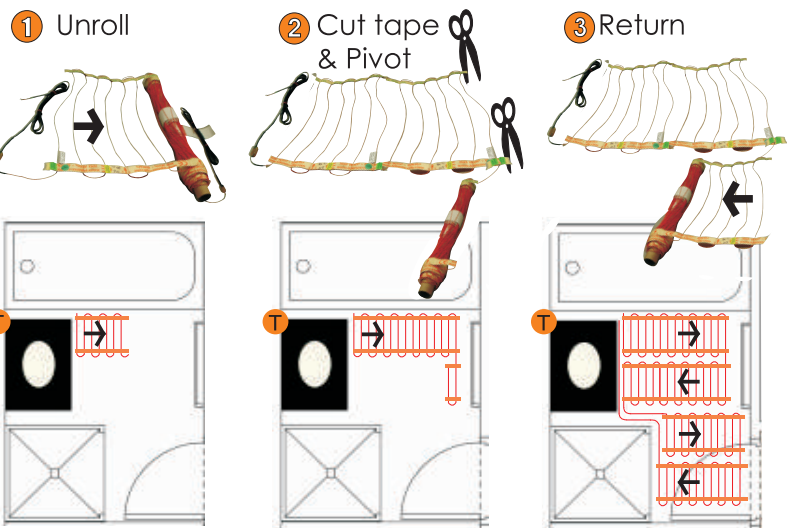
The heaters come in a range of widths and lengths to cater for rooms of different shapes and sizes. Heaters have 2.4m long start and finish power leads that connect to a manual or programable thermostat control.



Installation

Following the recommended layout provided unroll the heater, sticking it down in position using the tape that holds the element in its spacing. To start a new row, tear the tape and swing the heater 180 degrees. **Care must be taken to never cut or cross over elements.**

The start and finish power leads must both come back to the base of the wall under the thermostat. The protective fibreglass mesh is then unrolled and stuck down to cover the entire element, to secure it in position and protect it during the normal course of tiling.



Specification

Product Code	Dimensions	Wattage	Amps	Suitable to heat
TK 150/20	0.3 x 2.4m	150W	0.7A	0.8 - 1.0m ² Area
TK 200/20	0.3 x 3.1m	200W	1.0A	1.0 - 1.6m ² Area
TK 285/16	0.3 x 5.0m	285W	1.3A	1.7 - 2.7m ² Area
TK 440/16	0.3 x 7.8m	440W	2.0A	2.8 - 3.4m ² Area
TK 570/16	0.6 x 5.5m	570W	2.6A	3.5 - 4.6m ² Area
TK 760/16	0.6 x 7.3m	760W	3.4A	4.7 - 5.6m ² Area
TK 940/16	0.6 x 8.9m	940W	4.2A	5.7 - 7.4m ² Area
TK 1210/16	0.6 x 11.5m	1210W	5.4A	7.5 - 9.2m ² Area
TK 1500/16	0.6 x 14.4m	1500W	6.8A	9.3 - 11.0m ² Area
TK 1750/16	0.6 x 16.5m	1750W	7.9A	11.0 - 18.0m ² Area
TK 850/13	0.9 x 6.9m	850W	3.9A	6.6 - 8.6m ² Area
TK 1100/13	0.9 x 8.9m	1100W	5.0A	8.7 - 10.5m ² Area
TK 1375/13	0.9 x 11.1m	1375W	6.2A	10.6 - 13.2m ² Area
TK 1750/13	0.9 x 14.0m	1750W	7.9A	13.3 - 20.0m ² Area

Teflon Coated Heating Element

