



Chromatic Cadence



Chromatic Cadence

Colour is like music: it carries you into a different frame of mind, sparking new emotions and inspiring deeper connections to your world. Chromatic Cadence is inspired by the work of artist Yvette and her use of music as a starting point for her expressive, colour-filled paintings. The Chromatic Cadence modular carpet collection imagines colour as melody, creating a tonal rhythm across the floor and inviting flights of imagination or meditative calm.

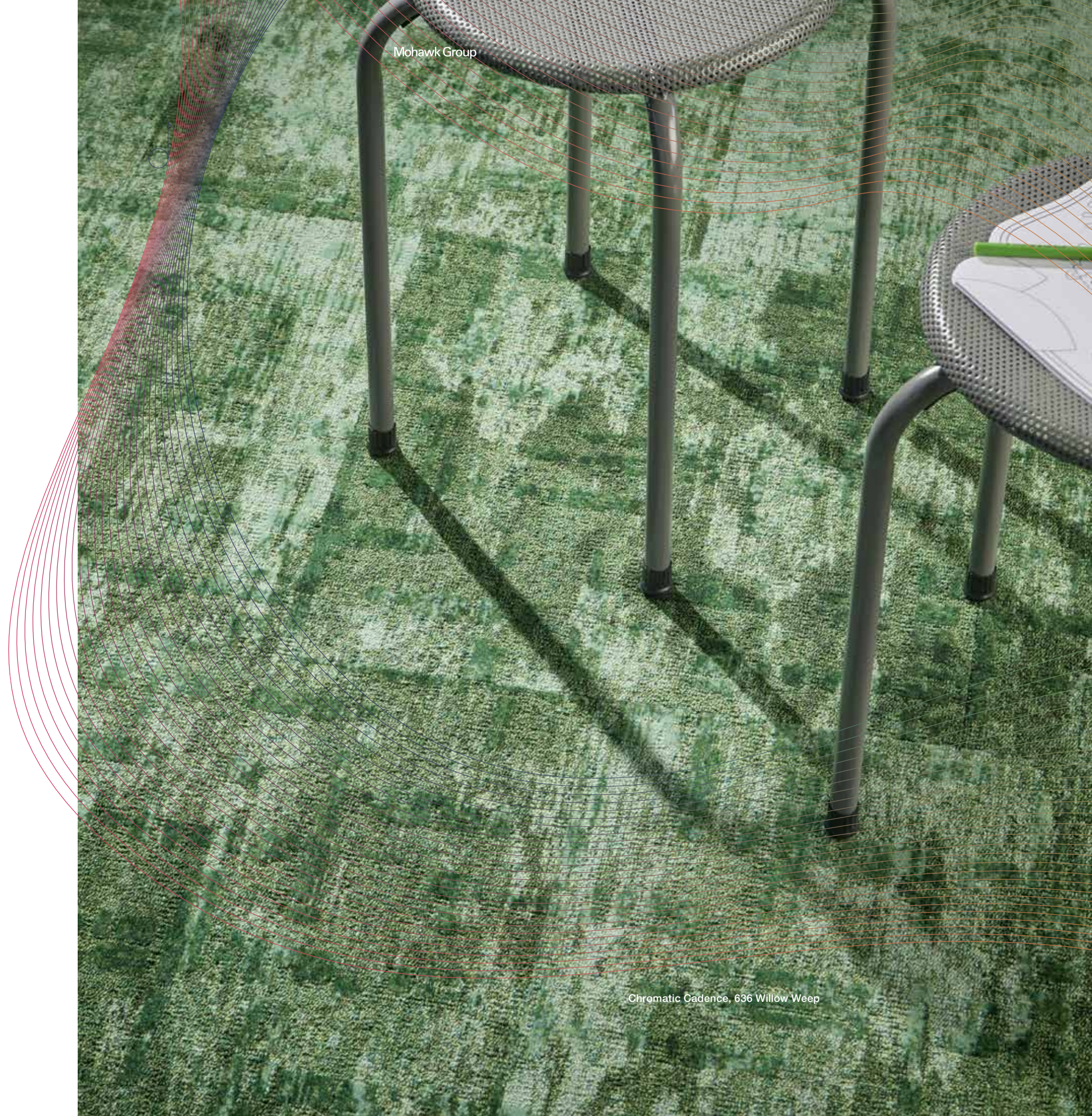
The water-like pattern allows delicate shifts in tone while grounding the space with a field of colour. In 25 hues, Chromatic Cadence offers options that encourage creativity and wellbeing in a space. This simple yet versatile style provides endless possibilities for expressive design.

Learn more at [ghcommercial.com](https://www.ghcommercial.com)

Cover:
Chromatic Cadence, 575 It's a Blue World,
Monolithic

Mohawk Group

Chromatic Cadence, 636 Willow Weep





Mohawk Group

Yvette



Yvette is an artist and a veteran who spent more than 20 years in the US Army. Her desire to create familiarity and comfort within spaces has influenced her paintings in a profound way. “Although my family is what’s most important in my life, painting is what really keeps me going” she explains. “It reminds me that I am not limited due to my disabilities. I can paint every story I feel.”

Yvette’s paintings always begin with music; from that point she incorporates her mood, dreams, recent experiences, and most importantly the support and inspiration she receives from her family. The empowerment Yvette has gained through her art is perhaps the most powerful lesson that painting has taught her: “I am invincible. The only thing that can slow me down is running out of paint.”



Chromatic Cadence proudly supports genU Arts

In pursuit of celebrating artists with disabilities in the Oceanic region, Chromatic Cadence is proud to support genU’s arts programme, by donating \$1 per square metre sold on a bi-annual basis. genU has a rich history of building inclusive communities. Their services - for people with disability; seniors, students; job seekers, businesses and community - all focus on empowering people to reach their full potential. genU’s arts programme fosters careers for artists who live with disabilities.

Originally founded in Geelong as a play-centre for children with disability in 1952, genU services and support have greatly expanded over their 70+ year history. Today, they are a team of 3600 employees and volunteers across 169 locations across Australia. They are also profit-for-purpose, and committed to reinvesting surpluses into services to promote inclusion in the community.



Artwork Credit: Marcus Lovell, James Street Gallery



FLEXLOK®

FLEXLOK® ADHESIVE TAB
FlexLok® is a worry-free, fume-free, fast and flexible adhesive tab for installing modular carpet on any substrate, including wood, VCT and concrete. The FlexLok® system is CRI Green Label Certified, Declare Red List Free, and virtually eliminates VOCs.

Declare.

RED LIST FREE
This collection is Living Building Challenge (LBC) Declare Red List Free, which means it provides a complete ingredient disclosure revealing ZERO Red List chemicals that are known to pose serious risks to human health and the greater ecosystems.

Designer Jet®

Designer Jet® is a world class custom carpet technology for creating an infinite array of colours and bespoke designs you would never have thought possible in a carpet. It works by taking any striking pattern, drawing or image and using precision engineering to inject the dye into the carpet, offering a flexible, creative and performance driven carpet solution.

ENVIRO BAC®

Enviro Bac® is a dimensionally stable, breathable carpet tile and plank backing system offering exceptional performance features. Made locally in Australia, Enviro Bac® has been trusted in commercial buildings around the country for over 20 years.





Colourways BRIGHTS



151 Sunny Side



252 Magic Touch



354 Magenta Haze



373 Love TKO



454 Purple Rain



555 Blueberry Hill



566 Just for a Thrill



584 Kind of Blue



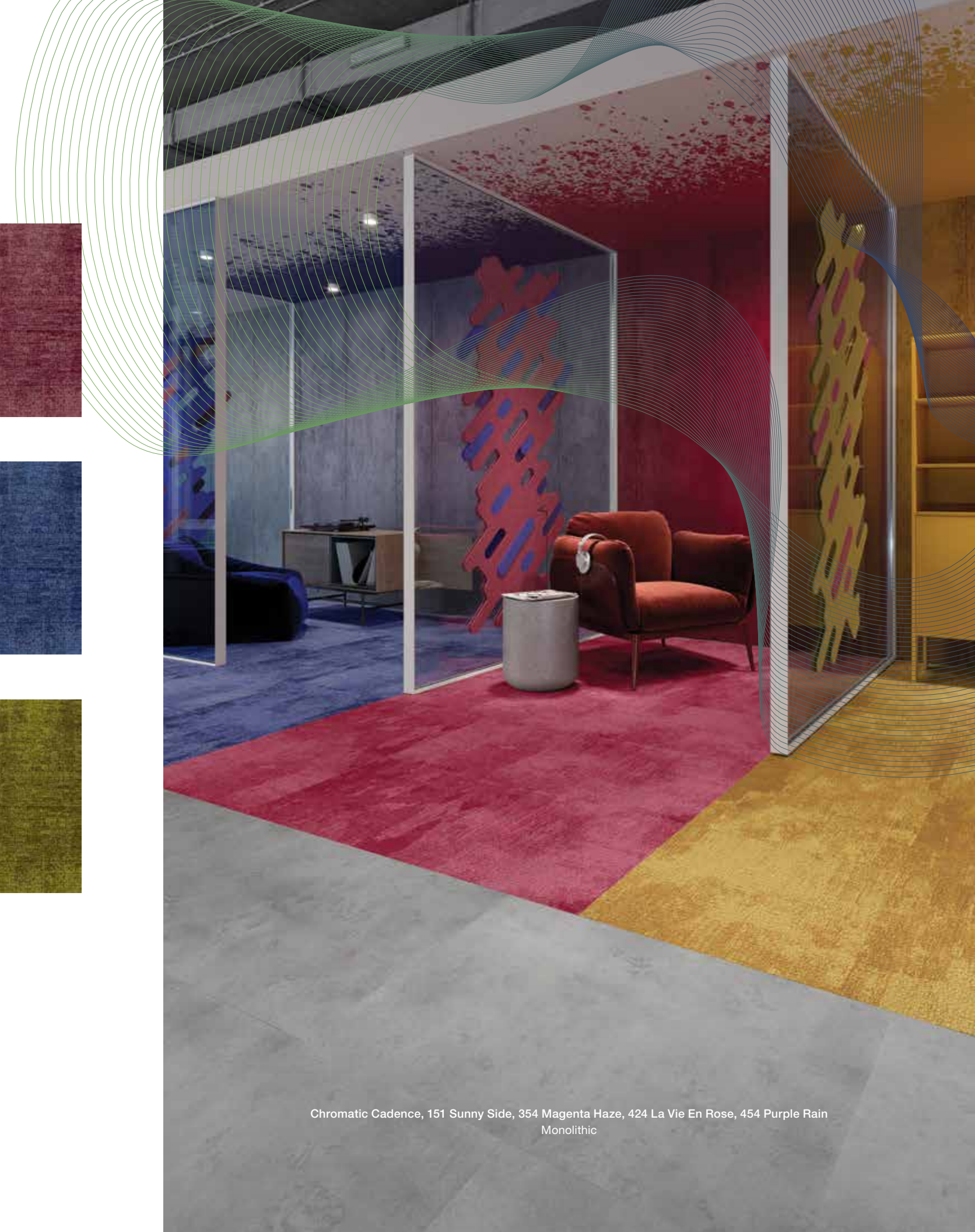
651 Stardust



656 Being Green



676 Lush Life



Chromatic Cadence, 151 Sunny Side, 354 Magenta Haze, 424 La Vie En Rose, 454 Purple Rain
Monolithic



Colourways NEUTRALS



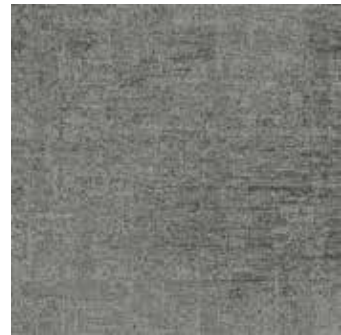
737 Fine and Mellow



778 Stormy Monday



878 Sweet Georgia Brown



927 Smokestack Lightning



958 Stone Crazy



989 Round Midnight

Colourways DESATURATED



142 Summertime



353 Spell on You



424 La Vie En Rose



444 Right Place



535 Blue Skies



575 It's a Blue World



595 Kozmic Blues



636 Willow Weep





Enviro Bac®

Enviro Bac® is a dimensionally stable, breathable carpet tile backing system offering exceptional performance features. Made locally in Australia, Enviro Bac® is a healthier carpet backing solution that has been trusted in commercial buildings around Australasia for over 20 years.



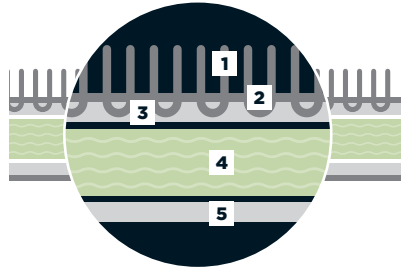
- A healthier backing system: no PVC, BPA or Phthalates



- Exceptional dimensional stability to prevent stretching, shrinking or curling



- Breathable backing system with a good Moisture Vapour Emission Rate (MVER)



1. Yarn
2. Primary Backing
3. Pre-Coat
(latex binding layer adding tuft strength)
4. Enviro Bac®
5. Secondary Scrim



Chromatic Cadence, 584 Kind of Blue

Mohawk Group



Chromatic Cadence, 142 Summertime, 151 Sunny Side, 737 Fine and Mellow, 927 Smokestack Lightning
Custom Installation



Specifications

Chromatic Cadence

DESIGN

Size	500 x 500 mm
Surface Appearance	Patterned Cut & Loop Pile
Fiber Type	100% Nylon
Dye Method	Designer Jet® Precision Dyed Technology
Colours Available	25

PERFORMANCE

Construction	Tufted
Gauge	47.2/10cm (1/12th Gauge)
Tufted Weight	780g/m ² (23oz)
Pile Height	4.5mm (+/-1mm)
Product Thickness	7mm (+/-1mm)
Stain Release Technology	EcoSentry Plus Stain Protection
Soil Release Technology	EcoSentry Soil Protection
Backing Material	Enviro Bac®
Flammability	Meets the requirements of NCC Spec. C1.10 relating to fire hazard properties for flooring in Class 2-9 buildings. Meets the requirements of the New Zealand Building Code Section C3 - Fire Affecting Areas Beyond The Fire Source (including healthcare and aged care).
Static Propensity	AATCC 134 < 3.5kV at 21°C & 20% Relative Humidity

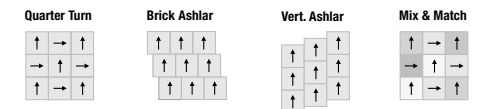
SUSTAINABILITY

Product Transparency	Declare Red List Free
Indoor Air Quality Accreditation	Green Building Council Compliant for VOC Emission Rate Limits
	Manufactured under a quality, health and safety, and environmental system certified and complying with ISO 9001, ISO 45001 and ISO 14001 by accredited certification bodies.

SERVICE

Australia	15 Year guarantee available on request*
New Zealand	Comprehensive warranties available. All warranties are issued on a project by project basis. Please contact us to discuss your requirements further.

Installation Instructions:



These patterns contain inherent characteristics which may result in pattern run off and/or pattern appearance variations at the seams or tile edges (darker or lighter pattern lines). These characteristics are inherent in the patterns and are not manufacturing defects. Consideration to these characteristics should be given when selecting an installation method. All carpet tiles and planks must be installed in accordance with AS2455 Parts 1 & 2 (latest version) and the GH Commercial Carpet Tile/Plank Installation Instructions. Chair pads are recommended under office chairs with roller castors to preserve appearance retention, act as a deterrent toward delamination and to prevent premature or accelerated wear. Walk-off tiles from the Tuff Stuff II Collection are recommended at entryways to reduce soiling. Specifications and colourations are subject to manufacturing tolerances. As part of the GH Commercial continuous improvement program, specifications may be changed or colours deleted without notice. For current and complete specifications please visit ghcommercial.com Images do not seek to duplicate the exact visual appearance, but serve merely as a guide or point of reference.

While all care is taken, product images may vary in colour due to possible printing process and/or light variations. *Test results are available on request. †Minimum order quantities may apply. Contact your GH Commercial Account Manager for information. *These guarantees/warranties are in addition to any rights consumers may have under Australian and/or New Zealand consumer laws. ^Terms and conditions apply – for full information in respect to the scope of the warranty please contact your GH Commercial Account Manager or our Head Office.





Mohawk Group



Chromatic Cadence, 737 Fine and Mellow

Colour is like music:
it carries you into a
different frame of mind.



Chromatic Cadence