



HW
HanWood

THE URBAN
COLLECTIVE

LUXURY VINYL FLOORING

PLANKS

1220 x 185 x 2.5mm

Welcome to a world of earthy wood motifs, moody shades and modern super-mat finishes. *An urban oasis awaits.*



The Urban Collective plank range offers an array of tones and variations to create limitless design opportunities for modern urban interior spaces. Think concrete, exposed timber beams, steel, and rustic surfaces.

The Urban style lends itself to open plan living where spaces are multi-functional and spacious. City dwellings, trendy retail fitouts, converted warehouses and offices are the ideal spaces to embrace the urban look.



Foveaux Street

Code: HW21



Collins Street

Code: HW22



Sussex Street

Code: HW23



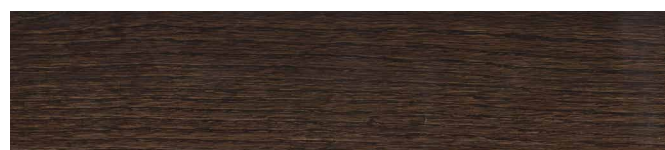
Belvoir Street

Code: HW24



Brunswick Street

Code: HW25



Chapel Street

Code: HW26



Argyle Street

Code: HW27



Fitzroy Street

Code: HW28



Gresham Lane

Code: HW50



Winn Lane

Code: HW06A



Burnett Lane

Code: HW10A



Eagle Lane

Code: HW11A



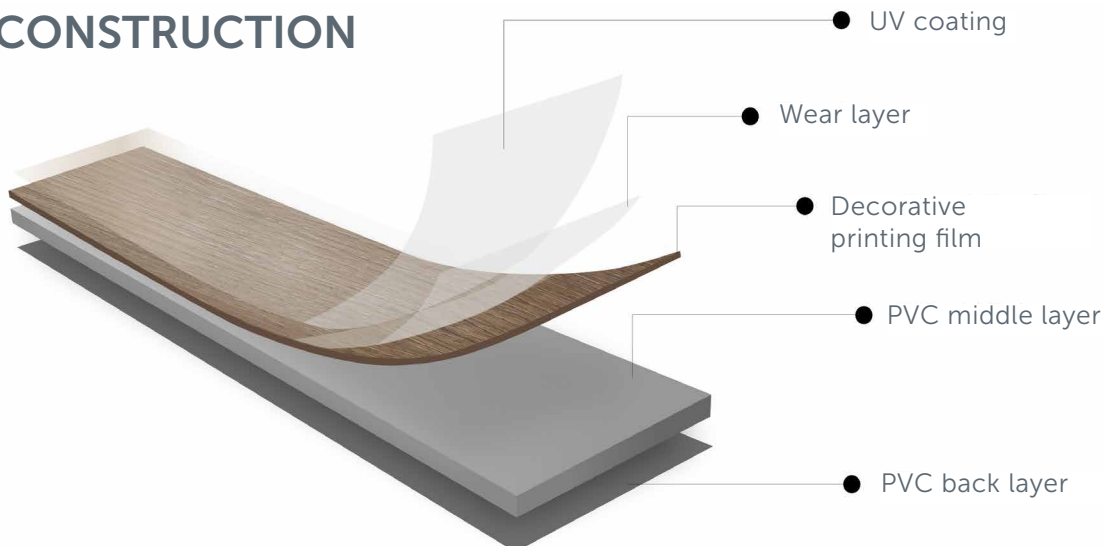
James Street*

Code: HW09A

*Strong shade variations



CONSTRUCTION



PHTHALATE FREE



NO HEAVY METALS



CERTIFIED BY SCS Global Services



TILES

Conquer the look of concrete and embrace industrial minimalism without the hassle.

610 x 610 x 2.5mm

Minimalism is all about stripping back to basics to achieve a cool, calm, clutter free space. Subdued hues rule here, from charcoal to greige and every ecru-inspired tone in between.

The Urban Collective luxury vinyl tiles simultaneously showcases exceptional functional design while artistically portraying the detailed intricacies of stone and concrete.



Hosier Lane
Code: HW29



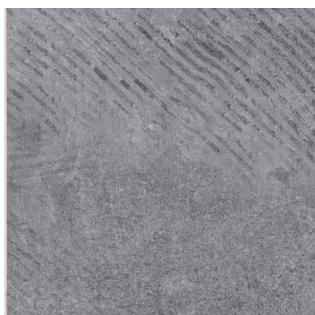
York Lane
Code: HW30



Abercrombie Lane
Code: HW31



Mill Lane
Code: HW32



Hardware Lane
Code: HW33



Flinders Lane
Code: HW34



St Jeromes Lane
Code: HW35

TECHNICAL SPECIFICATIONS

Standard Reference		
Size	EN ISO 24342	1220 x 185 x 2.5mm/ 0.55mm (planks) 610 x 610 x 2.5mm /0.55mm (tiles)
Overall thickness	EN ISO 24346	2.5mm
Wear layer thickness	EN ISO 24340	0.55mm
Dimensional stability after exposure to heat	EN ISO 23999	≤0.25%
Usage Classification	EN ISO 10874	23,33,42
Slip Resistance	AS4586:2013	P3
Colour fastness to artificial light	EN ISO 105 B02	≥6
Thermal resistance	EN 12667	0.034m ² K/W
Flexibility	EN ISO 24344	20mm
Resistance to staining	EN ISO 26987	Excellent
Heavy metals	Rohs	Not detected
Phthalate	EN 14372	Not detected
Fire Classification	EN 13501-1	Refer website
SVHC	REACH	Pass
VOC	DIBT/AgBB	Pass
	French VOC Regulation	A+
	California Specification 01350	Pass
Warranty	Commerical	10 years
	Residential	20 years
No. of pieces	Planks: 15 pcs/box	Tiles: 12pcs/box
Box volume	Planks: 3.37m ²	Tiles: 4.46m ²



SOFT & WARM



STAIN RESISTANT



NATURAL LOOK & FEEL

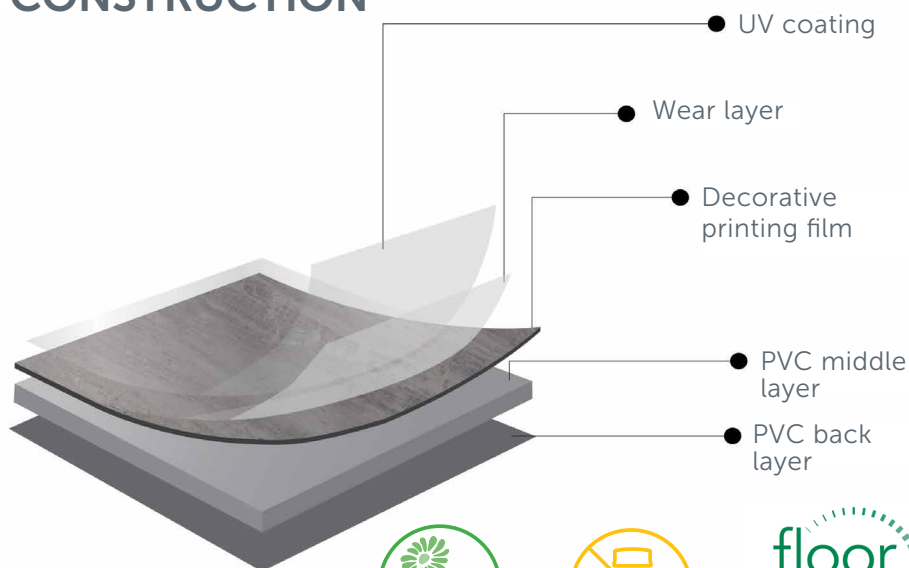


HIGHLY DURABLE



WATER RESISTANT

CONSTRUCTION



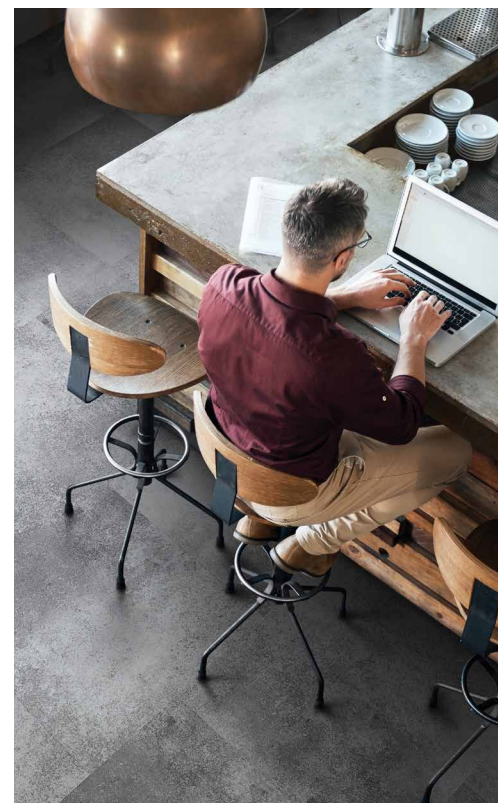
PHTHALATE FREE



NO HEAVY METALS



CERTIFIED BY SCS Global Services



For enquiries please contact QEP PTY LTD
P: 1300 737 155 | E: salesaust@qep.com