



PRODUCT SPECIFICATION SHEET

CORE: EPS INTERNAL WALLS AND CEILINGS

EPS CORE

EPS-FR core has been tried and tested for over half a century. This cost effective construction solution has an impressive strength to weight ratio, is 100% recyclable and because of its low density, it can provide further saving in the cost of foundations, framing and auxiliary insulation. This BCA Group 1 product contains a Flame-retardant (FR) making it self-extinguishing.

THERMAL PERFORMANCE

ASKIN SL Grade EPS insulation core delivers excellent thermal insulation and an integrated wall system. The high R-Value of ASKIN cellular foam EPS is derived by the insulation value of air filled cells making up 98% of the product volume giving a safe and natural insulation to the building.

R VALUES

PANEL THICKNESS (mm)	50	75	100	125	150	175	200	250	300
EPS R-Value (m ² K/W) at 15°Celsius	1.45	2.10	2.75	3.40	4.05	4.70	5.35	6.65	8.0

EPS Panel with Air Films (Zones 1-6, wind speed <7m/s)
NCC Specification J1.2-2, AS 2498.1: 1993

FIRE PERFORMANCE

ASKIN panel comprises an EPS cellular foam core sandwiched between sheets of steel. The panel system has been tested in the rigorous testing regime for surface linings prescribed in the National Construction Code (NCC). Encapsulation of the insulation material by the steel skins has been successfully proven to comply with the highest interior linings level of fire protection being NCC Group 1 classification.

CRITERIA	EPS
AS 1530.3: 1993 (Test for Flammability of materials) Compliance to C1.10 - AS5637.1 AS ISO 9705:2003	Flame Spread 0 Smoke Dev. 2 Heat evolved 0 Ignition 0 Group 1, SMOGRA = 3.8 (m ² / s ² x 1000)
CP4 requires materials and assemblies to resist spread of fire and limit the generation of smoke and toxic gases during evacuation.	Toxicity (Combustion gases) - Very Low (CO, CO ₂)

PRODUCT SPECIFICATION SHEET

CORE: EPS INTERIORS

ACOUSTIC

ASKIN® Panel achieves the following ratings for panel tested in accordance with AS 1191-2002 and assessed against AS/NZS ISO 717.1: 2004

PANEL THICKNESS	RW	RW + Ctr
ASKIN EPS Panel 75mm	23	21
ASKIN Dual Panel System- XFLAM 75mm/ EPS 75mm	43	37

PHYSICAL PROPERTIES

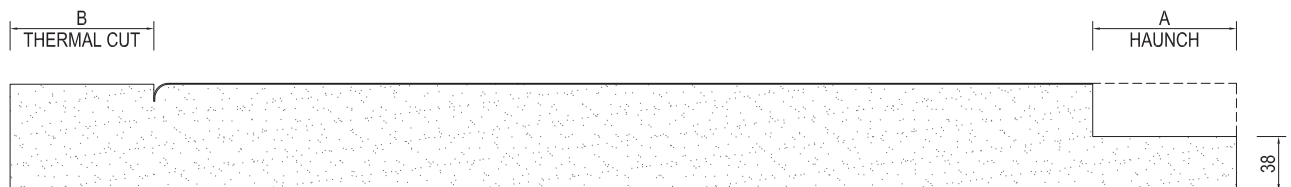
CRITERIA	PERFORMANCE
Density	13.5 kg/m ³
Recyclable	100% Recyclable
Workability	Excellent. No requirement for protection
Trafficability (As per NCC / BCA)	Resistant to maintenance traffic (140kg as per NCC/ BCA)
Peel Strength ASTM D1976 - Initial	2.4 N/mm

MANUFACTURING TOLERANCES

CRITERIA	MANUFACTURED	TOLERANCE
Length	1,500mm to 22,000mm	+/- 5mm
Width	Standard as 1,200mm	+/- 1mm
Thicknesses	50mm to 300mm in multiples of 25mm	+/- 1mm

HAUNCHES & THERMAL CUTS

ASKIN has the ability to manufacture on-line haunches for wall to ceiling joints and thermal cuts for low temp rooms. The standard cuts range from 50mm to 225mm in multiples of 25mm and significantly assist onsite installation speed as well as the reduction of site waste. Custom cut lengths are available subject to request.



COLOUR RANGE

A full choice of colours are available subject to Minimum Order Quantities (MOQ) and warranties. Please contact your ASKIN sales representative.

ENVIRONMENTAL

ZERO ODP

EPS foam insulation manufacturing does not use Ozone Depleting Substances such as CFCs, HCFCs or HFCs.

Resource Efficiency

As a low density insulation product EPS uses very little natural resources by volume to manufacture. This, coupled with the high insulation performance, mean that the energy savings from using EPS will amount to hundreds of times the energy required to produce the product.

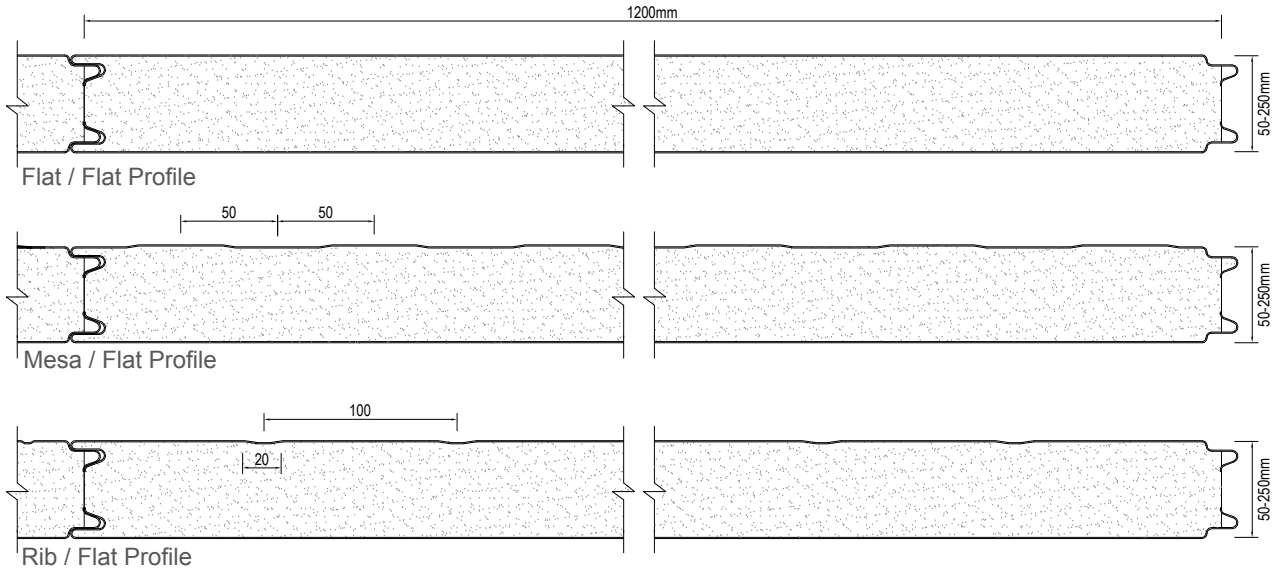
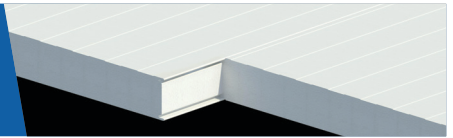
FEATURES & BENEFITS

- Fire Retardant
- Great Trafficability (140kg as per NCC/ BCA)
- Warranties 10+ years
- Extremely thermally efficient (R Values up to 8)
- Food safe anti-bacterial skins
- Long lengths available up to 22m
- Superior spanning capability
- Fast to install
- Manufactured and Installed for over 50 years

Interiors

ASKIN™

PRODUCT SPECIFICATION SHEET
CORE: EPS INTERIORS



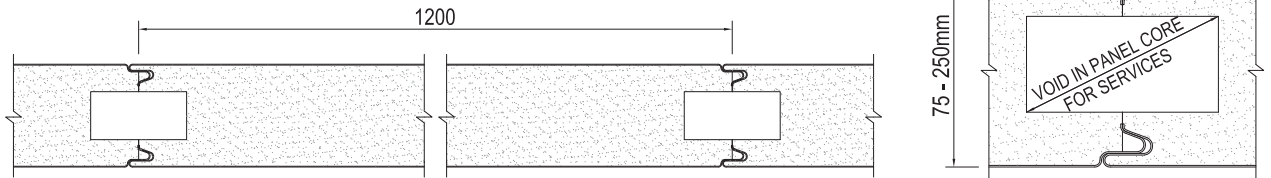
INTERNAL WALL AND CEILING PROFILE COMBINATIONS

EXTERNAL SURFACE PROFILES	FLAT	FLAT	FLAT	MESA (50mm)	MESA (50mm)	RIB (100mm)	RIB (100mm)	RIB (100mm)
INTERNAL SURFACE PROFILES	FLAT	MESA (50mm)	RIB (100mm)	FLAT	RIB (100mm)	FLAT	MESA (50mm)	RIB (100mm)

Note: Other profile combinations available dependant on application.

SERVICES

ASKIN can produce in-line services voids for special requirements. Please contact your ASKIN representative for further information.



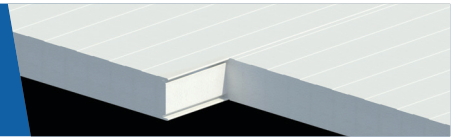
Interiors

ASKIN™

Disclaimer

Information provided here for design guidance only. Designers are encouraged to seek advice from a suitably qualified professional. All data is subject to change without notice.

PRODUCT SPECIFICATION SHEET
CORE: EPS INTERIORS



0.4mm EXTERNAL FACE SKIN WITH 0.4mm INTERNAL FACE SKIN

STANDARD STEEL SPECIFICATION

AS/NZS 2728 Paint Coating

AS 1397 Substrate System

External & Internal Skin materials – 0.4mm Thick G300S Z275 pre-painted off-white (Permagard®) steel with superior polyester finish coat of 25 microns and antibacterial protection.

Note: A range of substrates and colours without anti-bacterial protection are available, subject to application and MOQ.

PANEL WEIGHT

PANEL THICKNESS (mm)	50	75	100	125	150	175	200	225	250	300
Mass (kg / m ²) for 0.4 / 0.4	7.4	7.7	8.1	8.5	8.9	9.2	9.6	10.0	10.4	11.1

PANEL SPAN (m)

Allowable UDL accounting for ULS SLS Span/200 single or multiple span condition (kPa)

PANEL THICKNESS	2.0	2.4	3.0	3.6	4.0	5.0	6.0	7.0	8.0	9.0
50mm	1.64	1.14	0.73	0.51	0.41	0.26	0.18	0.13		
75mm	2.54	1.76	1.13	0.78	0.63	0.41	0.28	0.21	0.16	0.13
100mm	3.38	2.35	1.50	1.04	0.85	0.54	0.38	0.28	0.21	0.17
125mm	4.23	2.94	1.88	1.30	1.06	0.68	0.47	0.35	0.26	0.21
150mm	5.07	3.52	2.25	1.57	1.27	0.81	0.56	0.41	0.32	0.25
175mm	5.92	4.11	2.63	1.83	1.48	0.95	0.66	0.48	0.37	0.29
200mm	6.76	4.70	3.01	2.09	1.69	1.08	0.75	0.55	0.42	0.33
250mm	8.45	5.87	3.76	2.61	2.11	1.35	0.94	0.69	0.53	0.42
300mm	10.14	7.04	4.51	3.13	2.54	1.62	1.13	0.83	0.63	0.50

>0.87 kPa Minimum Exterior

>0.5 Minimum Internal

<0.5 kPa Special Design

Span data generated in accordance with AS/NZS 1170: 2011
 Based on 5% LPL 80% Confidence

0.6mm EXTERNAL FACE SKIN WITH 0.6mm INTERNAL FACE SKIN

STANDARD STEEL SPECIFICATION

AS/NZS 2728 Paint Coating

AS 1397 Substrate System

External & Internal Skin materials – 0.6mm Thick G300S Z275 pre-painted off-white (Permagard®) steel with superior polyester finish coat of 25 microns and antibacterial protection.

Note: A range of substrates and colours without anti-bacterial protection are available, subject to application and MOQ.

PANEL WEIGHT

PANEL THICKNESS (mm)	50	75	100	125	150	175	200	225	250	300
Mass (kg / m ²) for 0.6 / 0.6	10.7	11.1	11.4	11.8	12.2	12.6	12.9	13.3	13.7	14.4

PANEL SPAN (m)

Allowable UDL accounting for ULS SLS Span/200 single or multiple span condition (kPa)

PANEL THICKNESS	2.0	2.4	3.0	3.6	4.0	5.0	6.0	7.0	8.0	9.0	10.0	11.0	12.0
50mm	1.65	1.33	1.00	0.77	0.66	0.46	0.32	0.24	0.18	0.14	0.11	0.09	0.07
75mm	2.52	2.05	1.57	1.24	1.08	0.72	0.50	0.37	0.28	0.22	0.18	0.15	0.12
100mm	3.39	2.78	2.15	1.72	1.49	0.95	0.66	0.49	0.37	0.29	0.24	0.20	0.17
125mm	4.27	3.50	2.73	2.20	1.86	1.19	0.83	0.61	0.47	0.37	0.30	0.25	0.21
150mm	5.14	4.23	3.31	2.68	2.23	1.43	0.99	0.73	0.56	0.44	0.36	0.30	0.25
175mm	6.02	4.96	3.89	3.16	2.61	1.67	1.16	0.85	0.65	0.51	0.42	0.34	0.29
200mm	6.89	5.69	4.47	3.58	2.90	1.85	1.29	0.95	0.72	0.57	0.46	0.38	0.32
250mm	8.65	7.15	5.64	4.47	3.62	2.32	1.61	1.18	0.91	0.72	0.58	0.48	0.40
300mm	10.40	8.61	6.80	5.36	4.34	2.78	1.93	1.42	1.09	0.86	0.70	0.57	0.48

>0.87 kPa Minimum Exterior

>0.5 Minimum Internal

<0.5 kPa Special Design

Span data generated in accordance with AS/NZS 1170: 2011
 Based on 5% LPL 80% Confidence

Interiors

ASKIN™