

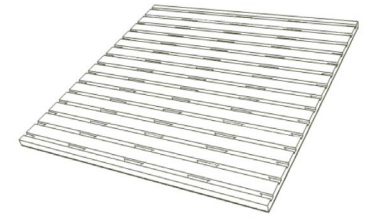
ACOUSTIC DATA SHEETS

DecorEagle

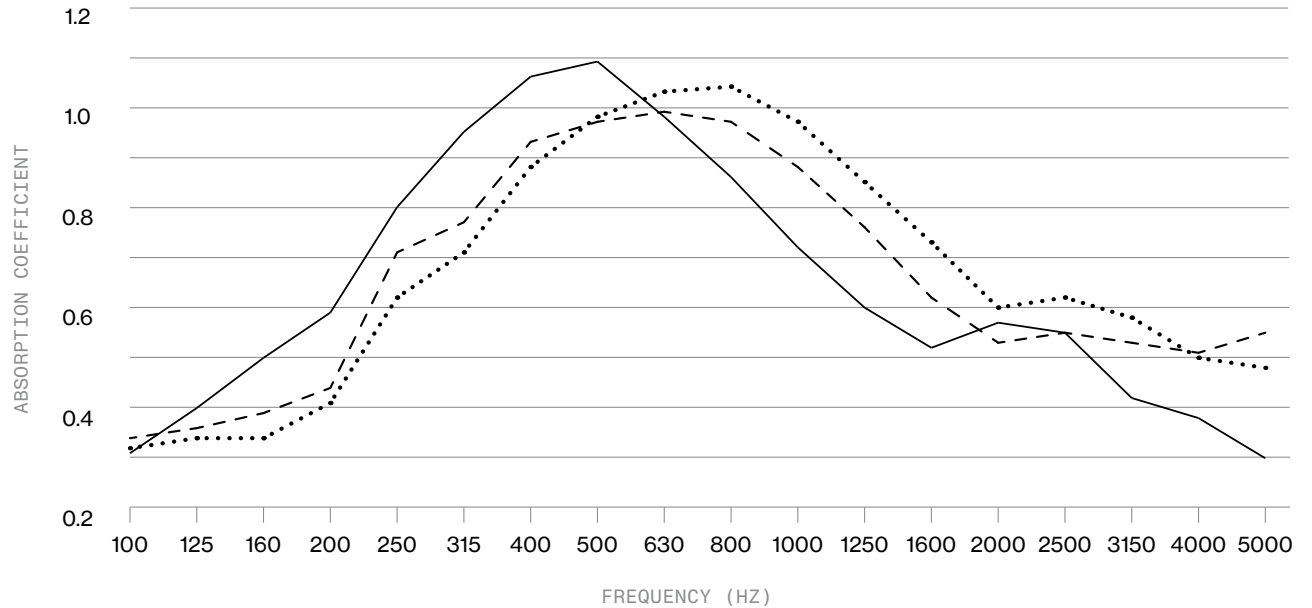
DECOREAGLE—10.2%

PERFORATED, 10.2% OPEN AREA WITH 90MM CAVITY

Acoustic panels



OPEN AREA 10.2%	NRC 0.75—0.80
PRODUCT OVERVIEW Finishes available - SmartLook, Natural Timber Veneer, 2 Pack Poly Paint, Custom Laminate Fire Rating - Group 1 or 3 Green Certifications - GECA	
TESTING OVERVIEW NATA Certified AS 1045-1988, measurement of sound absorption in a reverberation room Product tested with framing method as per installation guidelines. View Installation Guidelines here. Substrate: MDF	
STANDARD LENGTHS AND WIDTH 2400/3000x1200mm	



ITEM / DESCRIPTION	100	125	160	200	250	315	400	500	630	800	1K	1.25K	1.6K	2K	2.5K	3.15K	4K	5K
..... DecorEagle ¹	0.32	0.34	0.34	0.41	0.62	0.71	0.88	0.98	1.03	1.04	0.97	0.85	0.73	0.6	0.62	0.58	0.5	0.48
----- DecorEagle ²	0.34	0.36	0.39	0.44	0.71	0.77	0.93	0.97	0.99	0.97	0.88	0.76	0.62	0.53	0.55	0.53	0.51	0.55
————— DecorEagle ³	0.31	0.4	0.5	0.59	0.8	0.95	1.06	1.09	0.98	0.86	0.72	0.6	0.52	0.57	0.55	0.42	0.38	0.3

DecorEagle¹ - Perforated MDF board 16mm thick, open area 10.2% with Decorsorb - 90mm cavity - NRC 0.80 — α_w 0.65 — SAC C

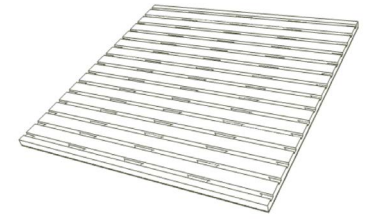
DecorEagle² - Perforated MDF board 16mm thick, open area 10.2% with Decorsorb - 90mm cavity - NRC 0.75 — α_w 0.65 — SAC C

DecorEagle³ - Perforated MDF board 16mm thick open area 10.2% with 30kg/m³ poly 80mm thick - 90mm cavity - NRC 0.75 — α_w 0.55 — SAC D

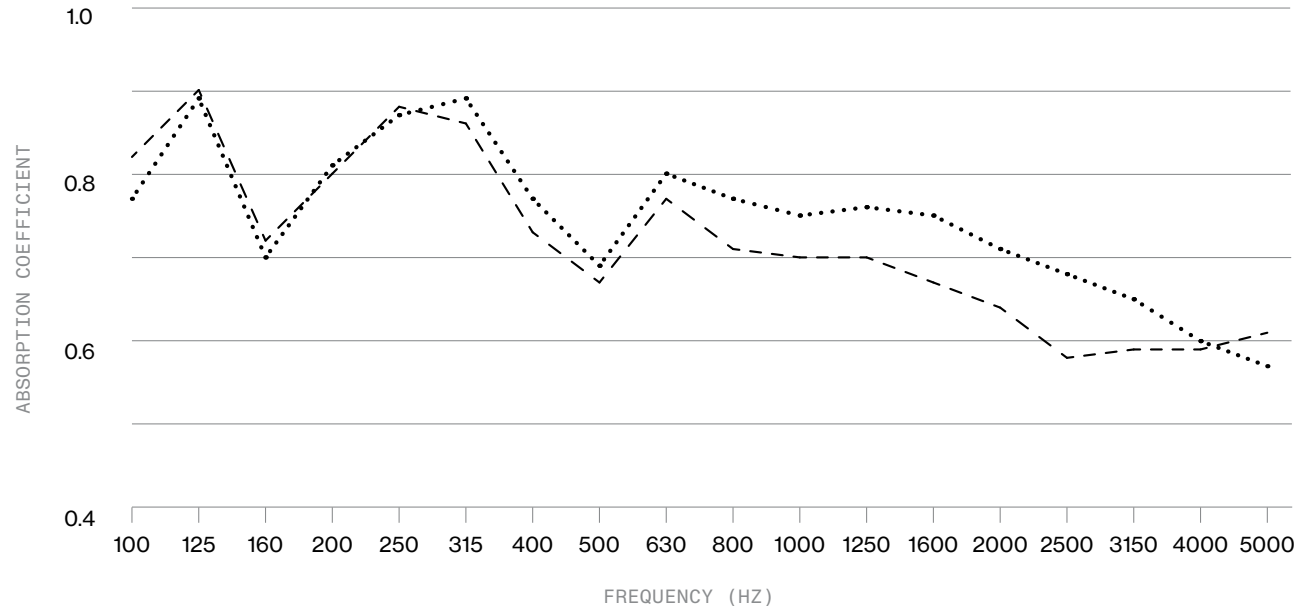
DECOREAGLE—10.2%

PERFORATED, 10.2% OPEN AREA WITH 400MM CAVITY

Acoustic panels



OPEN AREA 10.2%	NRC 0.75
PRODUCT OVERVIEW Finishes available - SmartLook, Natural Timber Veneer, 2 Pack Poly Paint, Custom Laminate Fire Rating - Group 1 or 3 Green Certifications - GECA	
TESTING OVERVIEW NATA Certified AS 1045-1988, measurement of sound absorption in a reverberation room Product tested with framing method as per installation guidelines. View Installation Guidelines here. Substrate: MDF	
STANDARD LENGTHS AND WIDTH 2400/3000x1200mm	



ITEM / DESCRIPTION	100	125	160	200	250	315	400	500	630	800	1K	1.25K	1.6K	2K	2.5K	3.15K	4K	5K
..... DecorEagle ¹	0.77	0.89	0.70	0.81	0.87	0.89	0.77	0.69	0.80	0.77	0.75	0.76	0.75	0.71	0.68	0.65	0.60	0.57
----- DecorEagle ²	0.82	0.90	0.72	0.80	0.88	0.86	0.73	0.67	0.77	0.71	0.70	0.70	0.67	0.64	0.58	0.59	0.59	0.61

DecorEagle¹ – Perforated MDF board 16mm thick, open area 10.2% with Decorsorb – 400mm cavity – NRC 0.75 — αω 0.75 — SAC C
 DecorEagle² – Perforated MDF board 16mm thick, open area 10.2% with Decorsorb – 400mm cavity – NRC 0.75 — αω 0.70 — SAC C

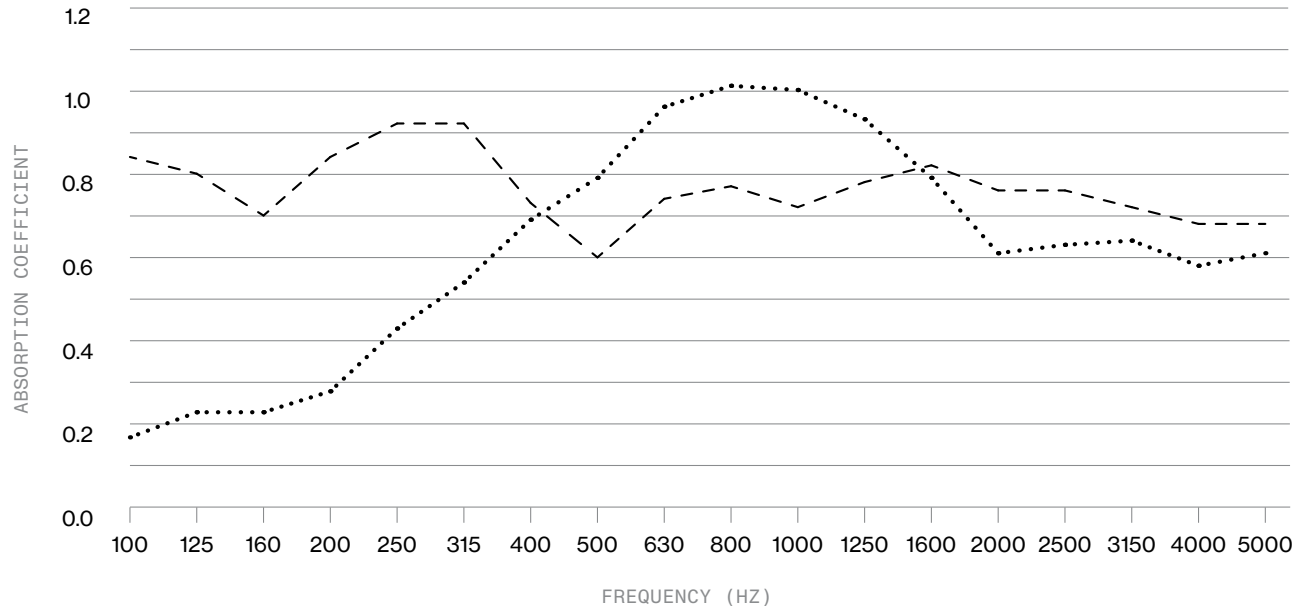
DECOREAGLE—25%

PERFORATED, 25% OPEN AREA WITH 90MM OR 400MM CAVITY

Acoustic panels



OPEN AREA 25%	NRC 0.70 - 0.80
PRODUCT OVERVIEW Finishes available - SmartLook, Natural Timber Veneer, 2 Pack Poly Paint, Custom Laminate Fire Rating - Group 1 or 3 Green Certifications - GECA	
TESTING OVERVIEW NATA Certified AS 1045-1988, measurement of sound absorption in a reverberation room Product tested with framing method as per installation guidelines. View Installation Guidelines here. Substrate: MDF	
STANDARD LENGTHS AND WIDTH 2400/3000x1200mm	



ITEM / DESCRIPTION	100	125	160	200	250	315	400	500	630	800	1K	1.25K	1.6K	2K	2.5K	3.15K	4K	5K
..... DecorEagle ¹	0.17	0.23	0.23	0.28	0.43	0.54	0.69	0.79	0.96	1.01	1	0.93	0.79	0.61	0.63	0.64	0.58	0.61
----- DecorEagle ²	0.84	0.8	0.7	0.84	0.92	0.92	0.73	0.6	0.74	0.77	0.72	0.78	0.82	0.76	0.76	0.72	0.68	0.68

DecorEagle¹ - Perforated MDF board 16mm thick, open area 25% with Decorsorb - 90mm cavity - NRC 0.70 — α_w 0.70 — SAC C
 DecorEagle² - Perforated MDF board 16mm thick, open area 25% with Decorsorb - 400mm cavity - NRC 0.80 — α_w 0.75 — SAC C

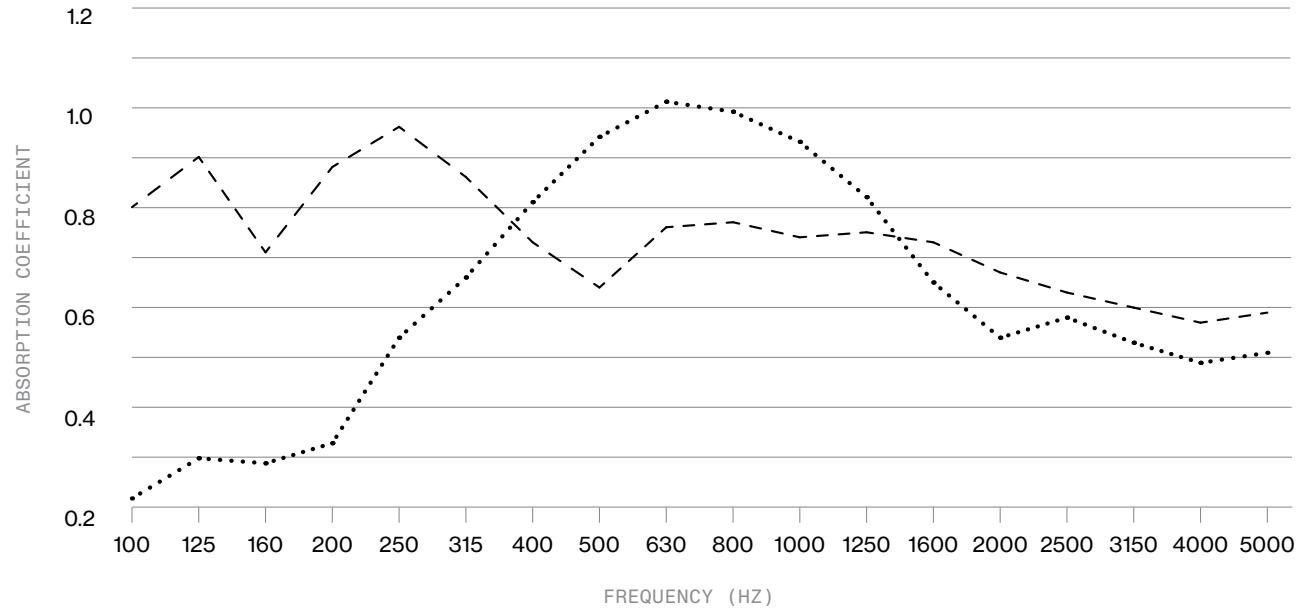
DECOREAGLE—14%

SLOTTED, 14% OPEN AREA WITH 90MM OR 400MM CAVITY

Acoustic panels



OPEN AREA 14%	NRC 0.75
PRODUCT OVERVIEW Finishes available - SmartLook, Natural Timber Veneer, 2 Pack Poly Paint, Custom Laminate Fire Rating - Group 1 or 3 Green Certifications - GECA	
TESTING OVERVIEW NATA Certified AS 1045-1988, measurement of sound absorption in a reverberation room Product tested with framing method as per installation guidelines. View Installation Guidelines here. Substrate: MDF	
STANDARD LENGTHS AND WIDTH 2400/3000x1200mm	



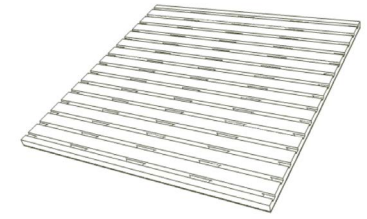
ITEM / DESCRIPTION	100	125	160	200	250	315	400	500	630	800	1K	1.25K	1.6K	2K	2.5K	3.15K	4K	5K
..... DecorEagle ¹	0.22	0.3	0.29	0.33	0.54	0.66	0.81	0.94	1.01	0.99	0.93	0.82	0.65	0.54	0.58	0.53	0.49	0.51
----- DecorEagle ²	0.8	0.9	0.71	0.88	0.96	0.86	0.73	0.64	0.76	0.77	0.74	0.75	0.73	0.67	0.63	0.6	0.57	0.59

DecorEagle¹ – Slotted MDF board 16mm thick, open area 14% with Decorsorb – 90mm cavity – NRC 0.75 — α_w 0.65 — SAC C
 DecorEagle² – Slotted MDF board 16mm thick, open area 14% with Decorsorb – 400mm cavity – NRC 0.75 — α_w 0.70 — SAC C

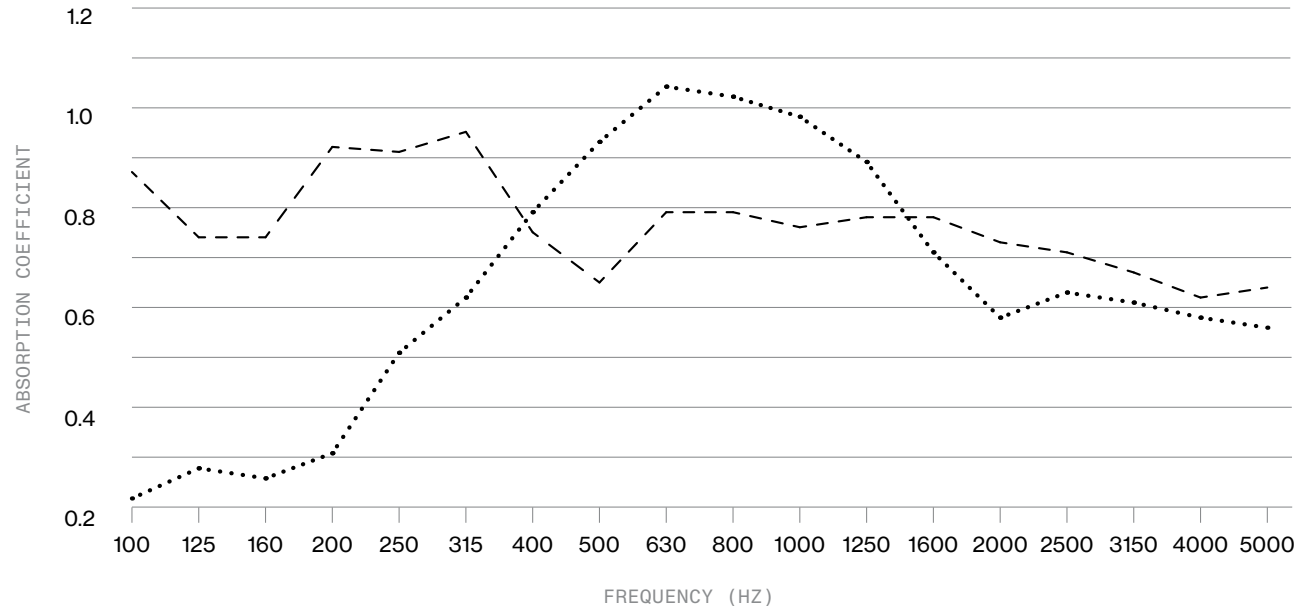
DECOREAGLE—17.2%

SLOTTED, 17.2% OPEN AREA WITH 90MM OR 400MM CAVITY

Acoustic panels



OPEN AREA 17.2%	NRC 0.75—0.75
PRODUCT OVERVIEW Finishes available - SmartLook, Natural Timber Veneer, 2 Pack Poly Paint, Custom Laminate Fire Rating - Group 1 or 3 Green Certifications - GECA	
TESTING OVERVIEW NATA Certified AS 1045-1988, measurement of sound absorption in a reverberation room Product tested with framing method as per installation guidelines. View Installation Guidelines here. Substrate: MDF	
STANDARD LENGTHS AND WIDTH 2400/3000x1200mm	



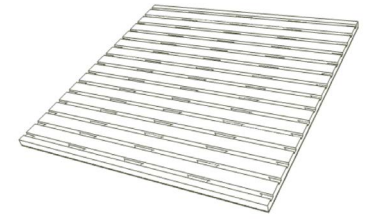
ITEM / DESCRIPTION	100	125	160	200	250	315	400	500	630	800	1K	1.25K	1.6K	2K	2.5K	3.15K	4K	5K
..... DecorEagle ¹	0.22	0.28	0.26	0.31	0.51	0.62	0.79	0.93	1.04	1.02	0.98	0.89	0.71	0.58	0.63	0.61	0.58	0.56
----- DecorEagle ²	0.87	0.74	0.74	0.92	0.91	0.95	0.75	0.65	0.79	0.79	0.76	0.78	0.78	0.73	0.71	0.67	0.62	0.64

DecorEagle¹ - Slotted MDF board 16mm thick, open area 17.2% with Decorsorb - 90mm cavity - NRC 0.75 — αω 0.70 — SAC C
 DecorEagle² - Slotted MDF board 16mm thick, open area 17.2% with Decorsorb - 400mm cavity - NRC 0.80 — αω 0.75 — SAC C

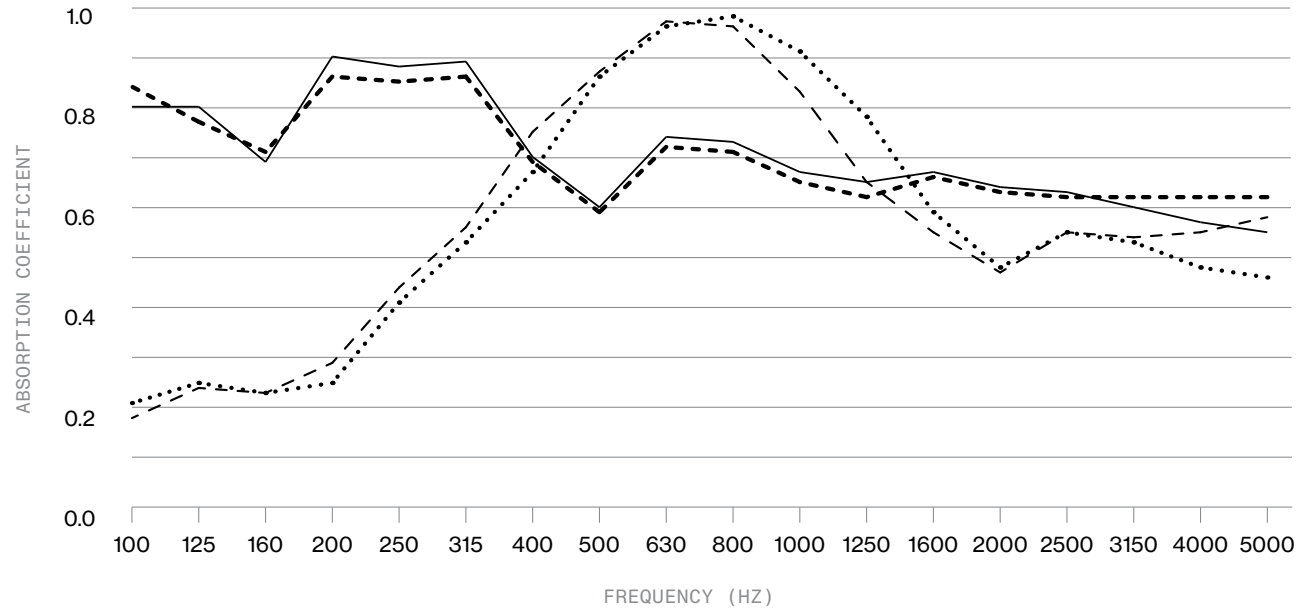
DECOREAGLE—21%

SLOTTED, 21% OPEN AREA WITH 90MM OR 400MM CAVITY

Acoustic panels



OPEN AREA 21%	NRC 0.65—0.70
PRODUCT OVERVIEW Finishes available - SmartLook, Natural Timber Veneer, 2 Pack Poly Paint, Custom Laminate Fire Rating - Group 1 or 3 Green Certifications - GECA	
TESTING OVERVIEW NATA Certified AS 1045-1988, measurement of sound absorption in a reverberation room Product tested with framing method as per installation guidelines. View Installation Guidelines here. Substrate: MDF, Plywood	
STANDARD LENGTHS AND WIDTH 2400/3000x1200mm	



ITEM / DESCRIPTION	100	125	160	200	250	315	400	500	630	800	1K	1.25K	1.6K	2K	2.5K	3.15K	4K	5K
DecorEagle ¹	0.21	0.25	0.23	0.25	0.41	0.53	0.67	0.86	0.96	0.98	0.91	0.78	0.59	0.48	0.55	0.53	0.48	0.46
DecorEagle ²	0.18	0.24	0.23	0.29	0.44	0.56	0.75	0.87	0.97	0.96	0.83	0.65	0.55	0.47	0.55	0.54	0.55	0.58
DecorEagle ³	0.8	0.8	0.69	0.9	0.88	0.89	0.7	0.6	0.74	0.73	0.67	0.65	0.67	0.64	0.63	0.6	0.57	0.55
DecorEagle ⁴	0.84	0.77	0.71	0.86	0.85	0.86	0.69	0.59	0.72	0.71	0.65	0.62	0.66	0.63	0.62	0.62	0.62	0.62

DecorEagle¹ - Slotted MDF board 9mm thick, open area 21% with Decorsorb - 90mm cavity - NRC 0.65 — α_w 0.60 — SAC C
 DecorEagle² - Slotted MDF board 16mm thick, open area 21% with Decorsorb - 90mm cavity - NRC 0.65 — α_w 0.60 — SAC C
 DecorEagle³ - Slotted MDF board 9mm thick, open area 21% with Decorsorb - 400mm cavity - NRC 0.70 — α_w 0.70 — SAC C
 DecorEagle⁴ - Slotted MDF board 16mm thick, open area 21% with Decorsorb - 400mm cavity - NRC 0.70 — α_w 0.65 — SAC C

GET IN TOUCH