

# The Look Book



## EXTERIORS

---





# Contents

## EXTERIORS

Linea™	7
Axon™	14
Stria™	19
Matrix™	25
EasyLap™	27
Axent™ Trim	28
HardieFlex™ Sheet	30
PrimeLine™	32
HardiePlank™	34
HardieTex™	35
PanelClad™	36
HardieEdge™	37
HardieBreak™	38
HardieWrap™	39
HardieBrace™	40
HardieFlex™ Eaves	41
HardieSmart™	42
Secura™ Exterior	43



# Looking good

## ON THE OUTSIDE

Whatever look you're after for the exterior of your home, whether it's the on-trend Hamptons design, eye-catching geometric patterns or strength and support behind your walls, explore the looks in these pages and discover one to take home and call your own.





PREMIUM FIBRE CEMENT

*More than  
meets the eye*



## DESIGN VERSATILITY

From city to country, sleek to classic, the exterior cladding and lining in these pages come in many textures and looks to add depth and individuality to your home's design. They're easy to work with and maximise options when building and renovating. Choose your look and go.





## **BIGGER ON THE INSIDE**

Living in your dream city means you might be a little cramped for space. The beauty of premium fibre cement is that it's more compact than traditional materials like brick and concrete. So, you're able to squeeze more space out of your living areas.



## LOW MAINTENANCE

All cladding and lining products featured in The Look Book are made from premium fibre cement. They're extremely durable and weather well. So when correctly installed, you can rest easy knowing maintenance will be minimal.







# Linea

## WEATHERBOARD

Laidback and relaxed, yet always stylish, Linea™ weatherboard is the on-trend look right now because it's so versatile. From the Hamptons coastal look to a traditional Queenslander renovation or a country estate, it's the weatherboard that weathers well.







### DESIGN TIP

Dress your Linea™ weatherboard up with Axent™ trim or mix it with other textures for extra design appeal.



# Linea options



## 150mm WIDE

For smaller homes and external walls, this size ensures you get the accentuated design shadows and timeless texture you're after within the space.



# Linear options

## 180mm WIDE

Larger walls suit the larger board size, giving you stylish, deep shadow lines and impressive external feature walls.







## COME HOME TO THE HAMPTONS

Design a home to fall in love with. Linea™ weatherboard holds paint more effectively than timber so your boards will look stronger for longer.



*The Look Book*

LINEA™





## THAT COASTAL FEELING

Light, airy and elevated, the lines of Linea™ weatherboard help accentuate wrap-around verandahs, gables, pitched roofs and more. Ah, soak in that sea breeze.







# Get the Linea look

## DESIGN TIP

Choose a dark paint finish or mix textures for your outside area to add the right mood for year-round entertaining. Your Linea™ weatherboard lines will look good for years.

**ARCHITECT:** JUSTIN EVERITT  
**BUILDER:** MIKE VALMADRE





# Axon

## CLADDING

---

If you're going for a smart, pristine look, Axon™ cladding creates a beautiful uniform surface. The vertically grooved panels are a design highlight for any modern family home or inner city apartment. Balance the look with eye-catching plants or plush outdoor couches.

Go on, look sharp!





# Axon options



## **133mm GRAINED**

The grainy wood-like texture compliments a smooth flooring surface and can help bring a softer touch to your modern outdoor space.



# Axon options

## 133mm SMOOTH

For sharp, clean lines.  
If your wall isn't too large,  
this one's for you..





# Axon options



## 400mm SMOOTH

This larger panel is perfection for larger walls and surfaces, creating an almost geometric feel to your exterior.





## LIVE THE DREAM

Alternate the width and direction of the Axon™ cladding and couple with a creative colour scheme for a distinct exterior design that's all yours.





# Stria

## CLADDING

Your style is timeless and so is your home. To complement your busy life, we've created a look you can set and forget, knowing it will never go out of fashion. Stria™ cladding is a thicker board with deep grooved lines that you can lay horizontally or vertically - what's not to love?





# Stria options



↙

## **STANDARD PROFILE 325mm WIDE**

Solid and distinctive, this profile looks like rendered masonry and makes your walls stand proud.



# Stria options

## WIDE PROFILE 405mm WIDE

This larger profile is a touch more decorative, giving your walls the look of rendered block-work.





# Stria options



## **SPLAYED PROFILE 255mm WIDE**

This slimmer profile with its beveled edge is a great choice if you want the classic look of traditional timber.



# A modern classic

## DESIGN TIP

To clad for the long run, pick Stria™ cladding for any surface knowing you'll get to enjoy simple, modern and stylish walls.





*Go big*



## BACKYARD VIEW

If you're looking to extend, Stria™ cladding makes it easy to include a modern addition onto the back of your traditional home. Create a larger living space without feeling boxed in.





# Matrix

## CLADDING

---

If you want to make a statement without saying a word, Matrix™ cladding with its modern geometric look is a bold and on-trend choice. It'll be the talk of the town.







## DESIGN TIP

Create a one-of-a-kind geometric pattern with Matrix™ cladding by combining vertical and horizontal panels for a striking design. You can even print digitally on the flat sheets for added design clout.





# EasyLap

## PANEL

If you're a no-nonsense kind of person looking for a cost-effective but oh-so-impressive textured wall, our large EasyLap™ panels are what you're after. They give you a rendered look with a subtle shadow line and you can paint them any colour you like once they're up.

Ready, set, go!







# Axent

## TRIM

---

It's often the little things that make the biggest impression. Axent™ trim makes it easy to add those finishing touches around windows, doors, corners or wherever you want a sleek, solid border. It also works a treat for modern and classic looks.







## A TWIST ON A CLASSIC

Offset the moody shadow lines of the traditional Hamptons look with a clean and crisp framing of Axent™ trim.







# HardieFlex

## SHEET

Simplicity. Check. Clean lines. Check.

Whether your home is nestled amongst the trees, or you're in the concrete jungle with a landscaped garden, HardieFlex™ sheet is your easy pick for a no-fuss, streamlined, modern look you can count on. Mix it with Axent™ trim (like the family on page 18) for a truly personalised look.





*A simple truth*



**DESIGN TIP**

Turn even the simplest external panels into something special. Dress up your gable with HardieFlex™ sheet and paint it any colour to match your surroundings. Finish off your look with Axent™ trim.

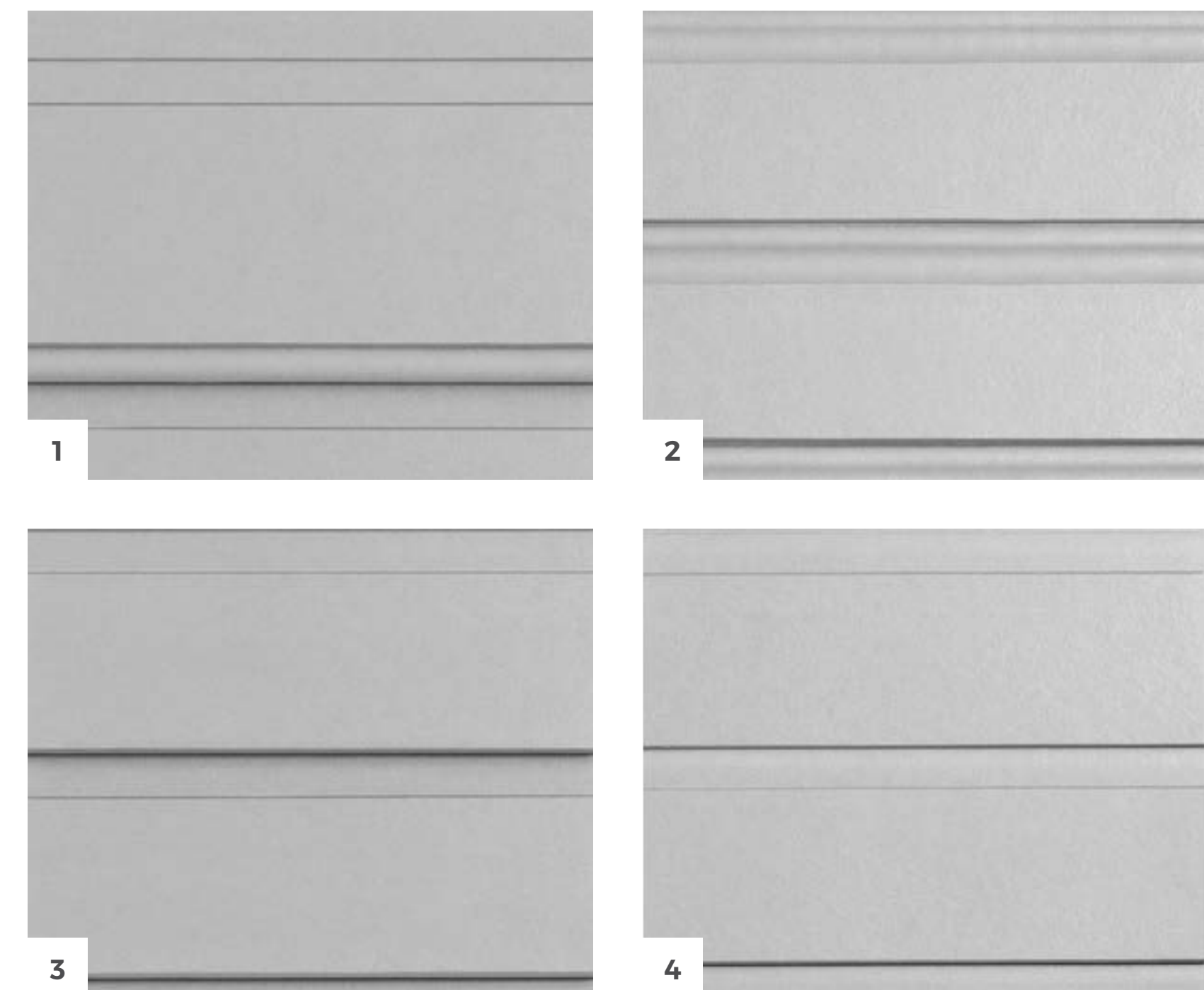




# PrimeLine

## WEATHERBOARD

PrimeLine™ weatherboard delivers a premium, early 1900's cottage look for your inner-city design or airy Queenslander. Think thicker panels, rounder edges and a very stylish overall finish.



**1 / PrimeLine™ Summit:** A slender, beaded-edge weatherboard for an easy, modern edge.

**2 / PrimeLine™ Heritage:** A double-width weatherboard with rebated edges for designer shadow lines.

**3 / PrimeLine™ Newport:** A smooth, narrow weatherboard for a clean, contemporary look.

**4 / PrimeLine™ Chamfer:** A double-width weatherboard with clean lines for larger surfaces and an accentuated shadow effect.





That  
holiday  
feeling

ARCHITECT: D'AGOSTINO AND  
LUFF ARCHITECTS



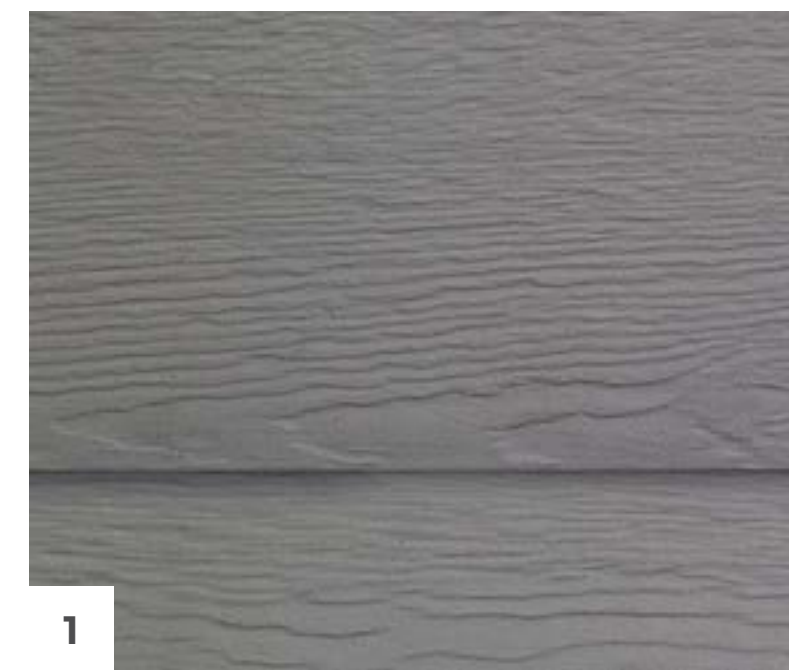


HARDIEPLANK™  
RUSTICATED

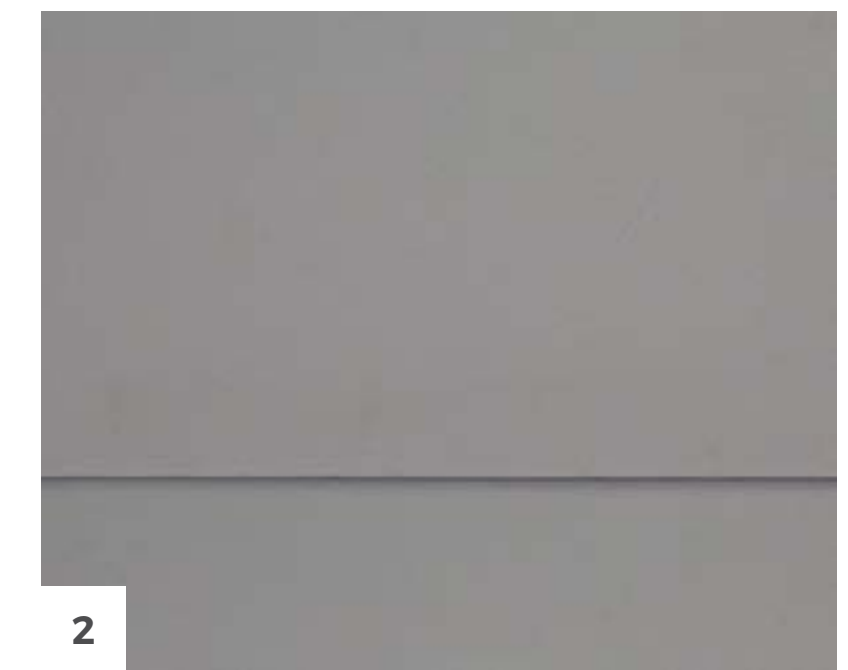
# HardiePlank

## WEATHERBOARD

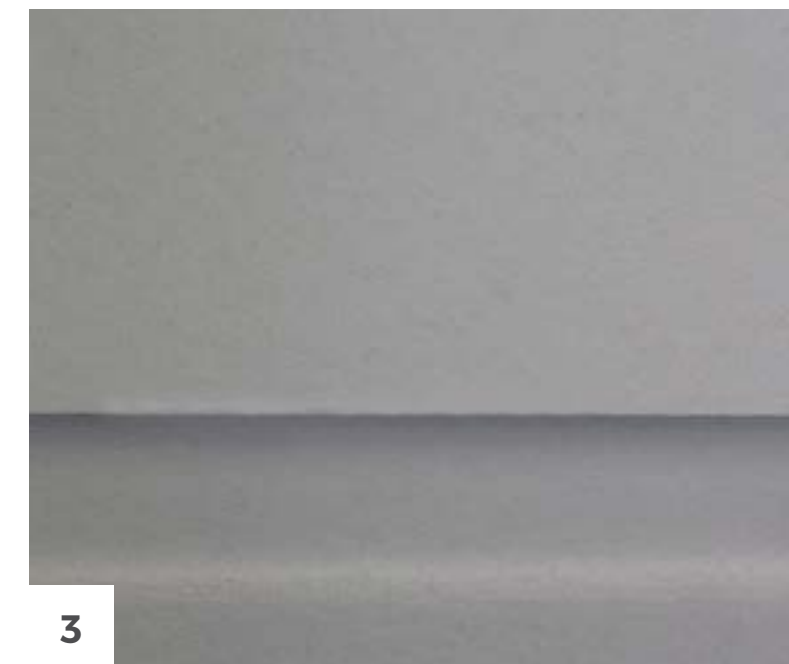
Craving a classic weatherboard look without the maintenance? HardiePlank™ weatherboard is your answer. It comes in a range of textures and you can paint it on-site whatever colour you like.



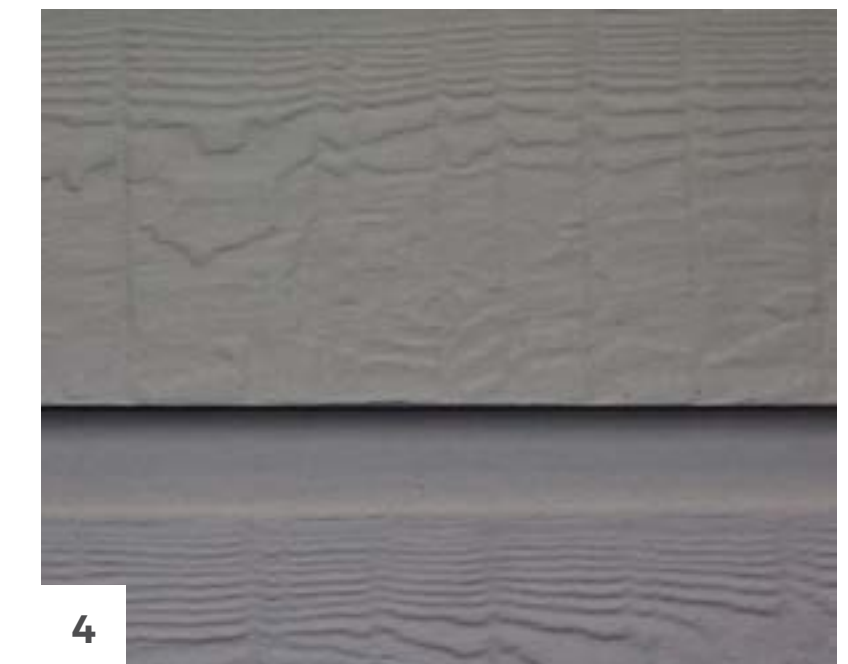
1



2



3



4

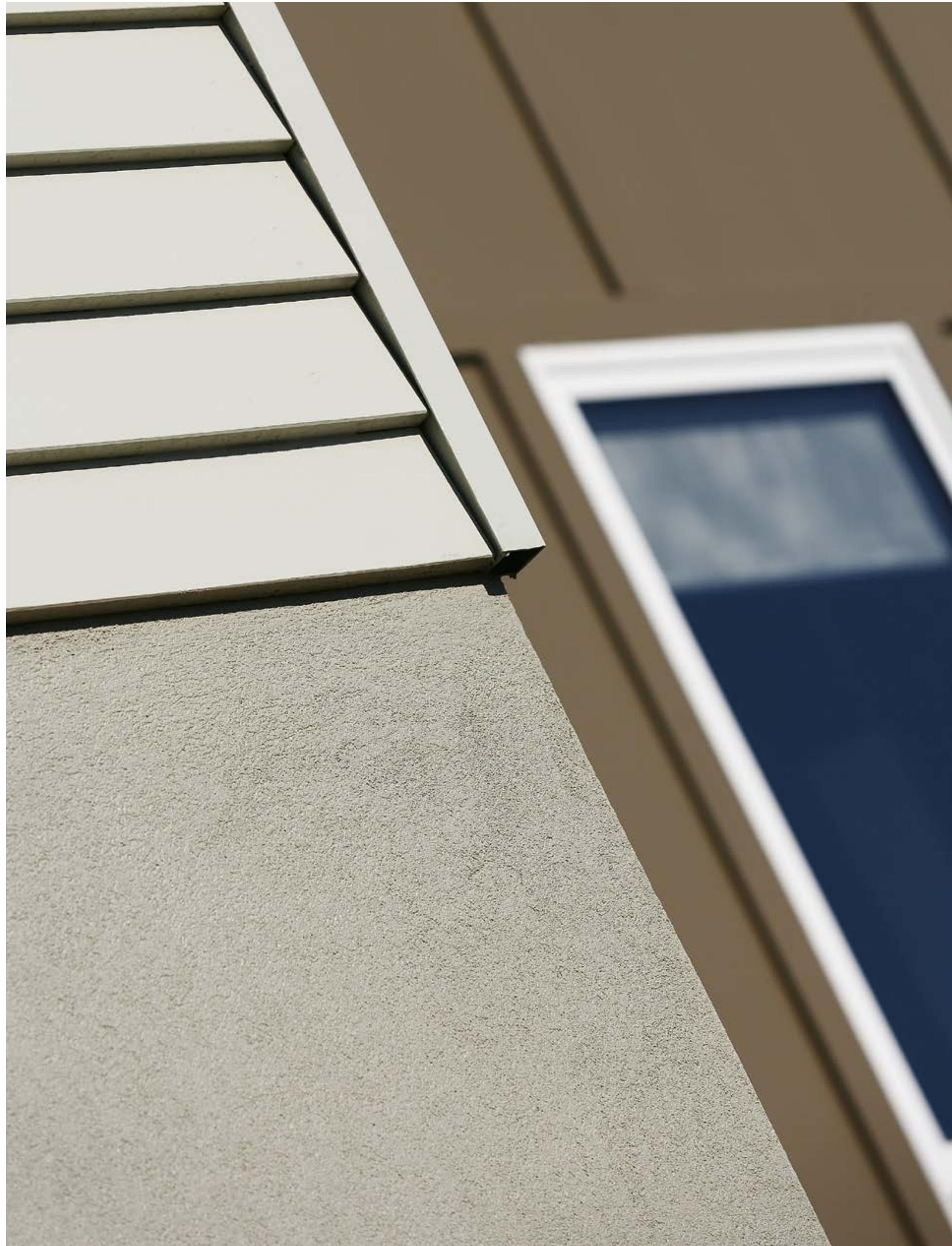
1 / **HardiePlank™ Woodgrain:** Traditional woodgrain look.

2 / **HardiePlank™ Smooth:** Modern, straight lines.

3 / **HardiePlank™ Old Style:** Smooth surface, rebated edges for shadow lines.

4 / **HardiePlank™ Rusticated:** Pre-primed, subtle timber grain, rebated edges for shadow lines.





# HardieTex

## SYSTEM

For a decorative rendered look, HardieTex™ system is your modern answer to the heavy concrete and masonry that bogged things down in the past. You're still able to add the texture you're after and then paint it light or dark to suit your design. Yes please!







# PanelClad

## SHEET

---

If a point of difference has always been the ying to your design yang, then PanelClad™ sheets are your new best friend. Use them for your feature wall or design accents and see your home come to life exactly how you had in mind.



### **PanelClad™ Textureline**

A rough-hewn, vertical board and batten surface, use this to achieve the bandsawn timber effect.



### **PanelClad™ Stucco**

This sheet provides that hand-trowelled cement-rendered Mediterranean look.





# HardieEdge

## TRIM

---

To accentuate and protect your edges and for stronger joins, HardieEdge™ trim perfects any architectural look. It's the finishing touch that will help your design dream come to life.







# Hardie Break

## THERMAL STRIP

Smart design saves on space. This is one slim strip that will give your walls excellent strength and resistance.

It's non-absorbent and mould resistant too.

How clever is that?







# HardieWrap

## WEATHER BARRIER

The Australian way of life goes hand in hand with our unforgiving weather. HardieWrap™ weather barrier shields your home from day one, keeping it cool in summer, warm in winter and protecting your walls from moisture build-up. Rain, hail or shine.







# HardieBrace

## SHEET

---

Whether you face extreme winds, torrential rain or even earthquakes, HardieBrace™ sheet will keep your home strong and solid all year round.

Build your dream home knowing you've got the structural strength to back it up.







# HardieFlex

## EAVES

---

They're often overlooked but don't hold back making your eaves and soffits a feature. Those hard-to-reach places are easy to line with HardieFlex™ eaves. They come in smooth flat sheets and are the perfect width for what you're covering up high.





## BOUNDARY WALL

For boundary walls, this is your high-performing alternative to brick veneer. It's faster to install and up to 45% more compact.



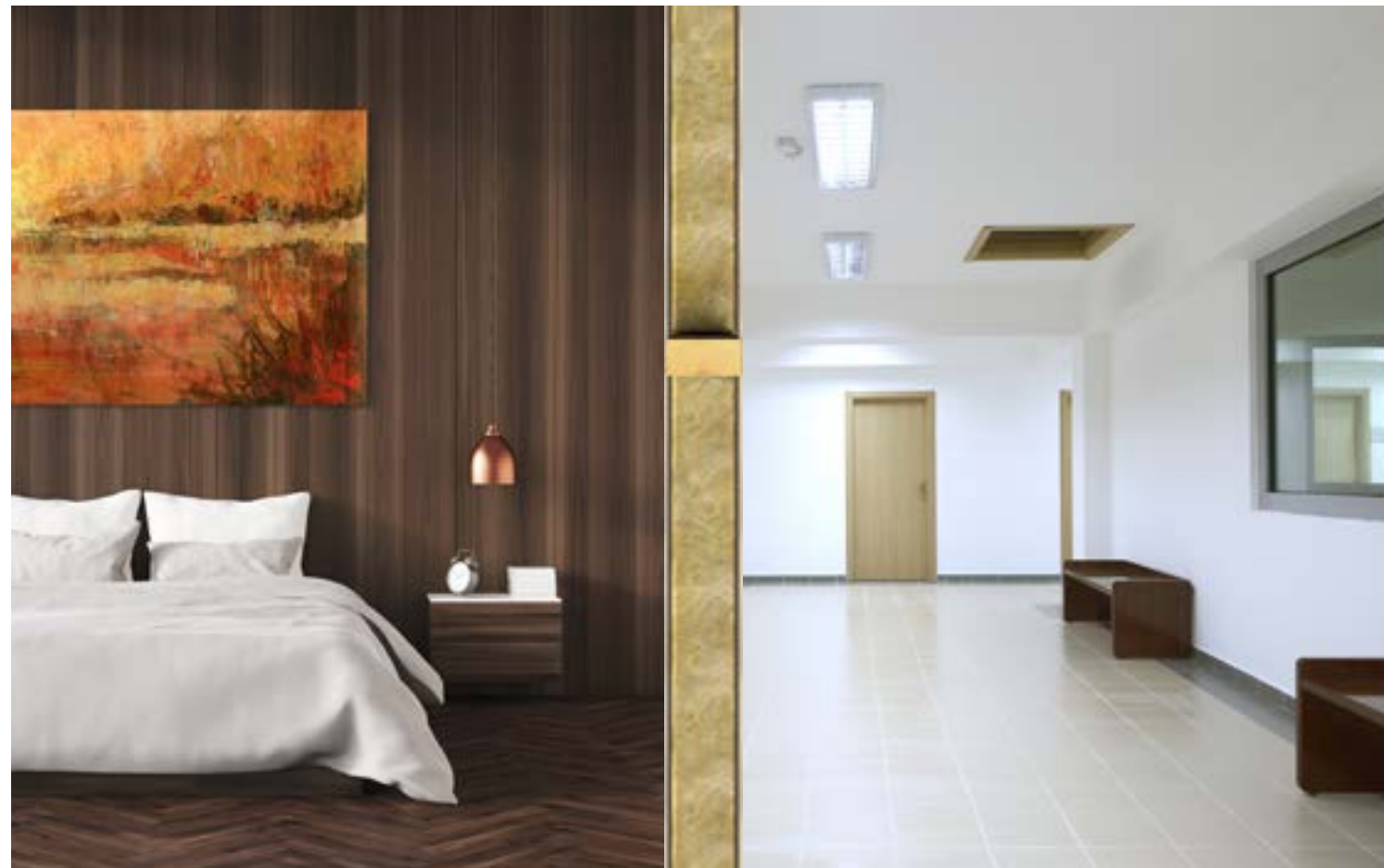
# HardieSmart

## SYSTEMS

What's in a name? With HardieSmart™ systems, there's a whole lot of smart thinking. It's perfect if you're in a townhouse or terrace, or just need to maximise your living space. These compact, versatile space-saving wall systems can help you find those extra inches. They also reduce noise, help with ventilation to prevent mould build-up and are fire-resistant for 60 minutes.

## AGED CARE WALL

Between rooms and corridors in aged care facilities, HardieSmart™ Aged Care wall system is your go-to for easy installation. Its single layer compact design makes it versatile, fast to build into any design and a real space-saver.



## BLADE WALL

This compact wall helps separate the outside from what's in, leaving you with more breathing room. It's especially useful for narrow sites.



## ZEROLOT™

If you're building multiple occupancies in one, this system lets you construct independently so you can build as you sell and keep things moving. It's also compact to give you more living space.

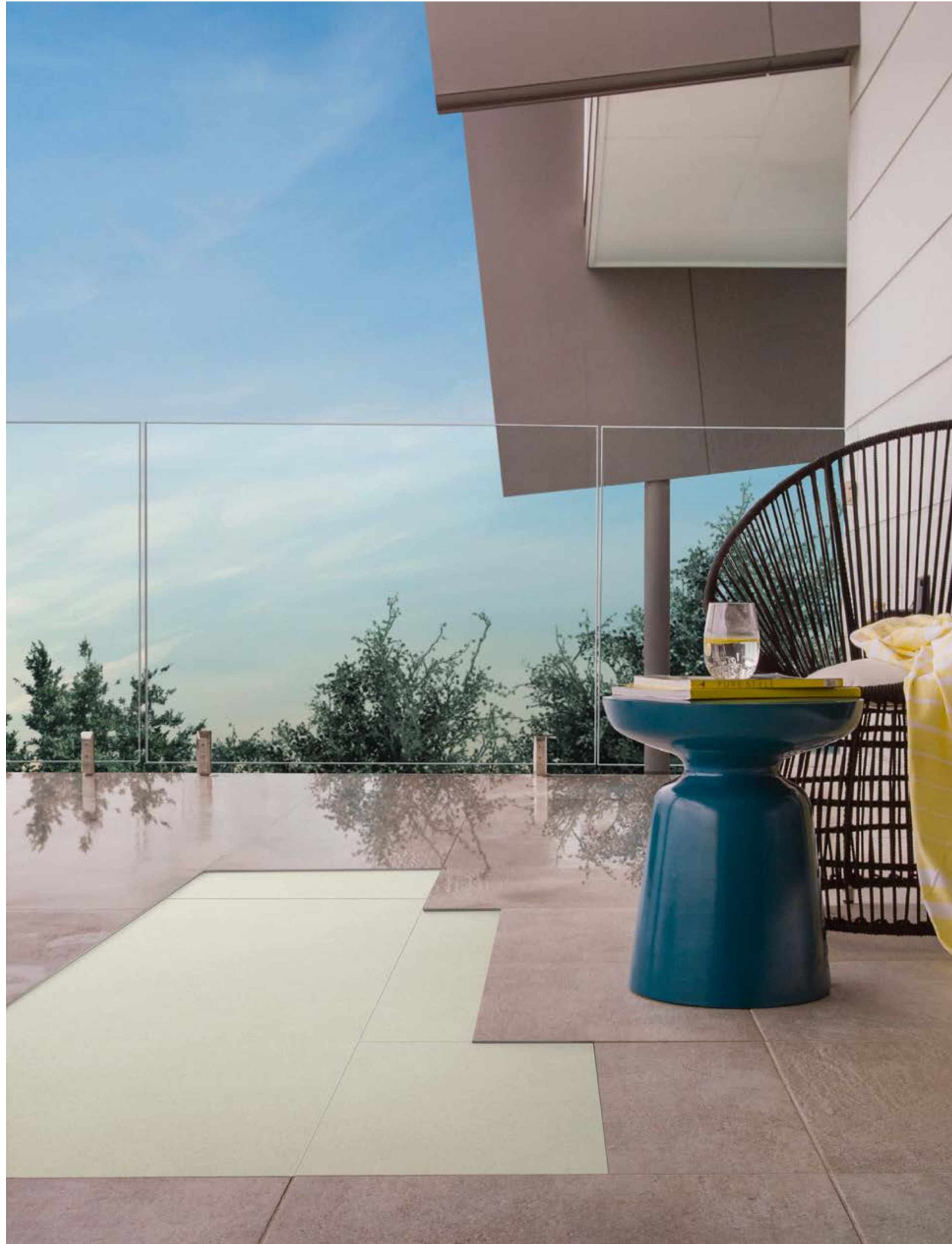


## INTERTENANCY WALL

For common walls in semis, this is a single layer that's fast to install and more compact – giving you more living space.







# Secura exterior

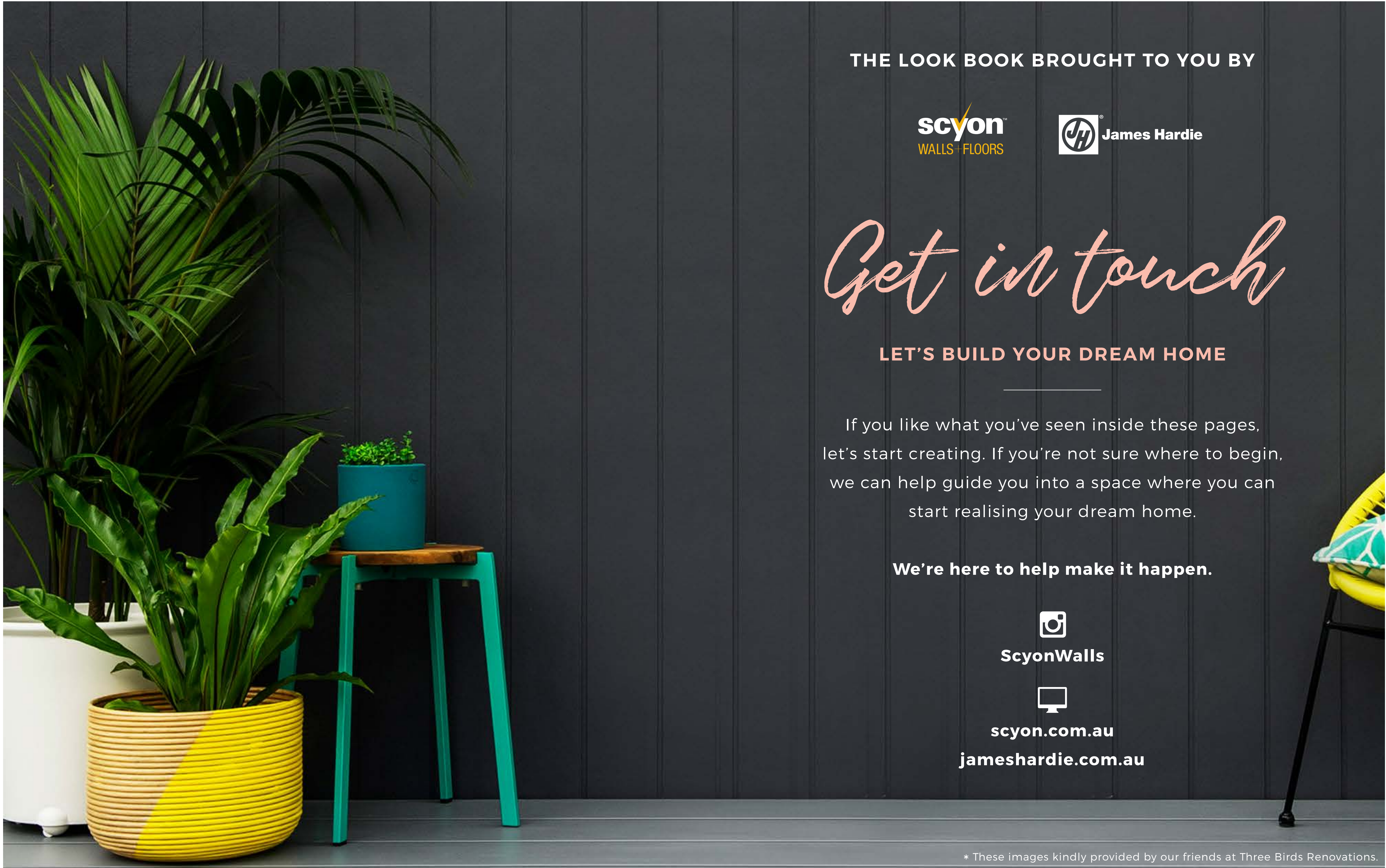
## FLOORING

---

If your best family bonding time happens outdoors, Secura™ exterior flooring is the no-brainer choice for your floors. It's the structural flooring substrate renowned for its performance in heavy traffic areas and extreme weather conditions. Just marvel as it reinforces and protects your tiles and pavers against potential moisture damage over the years.







THE LOOK BOOK BROUGHT TO YOU BY



# Get in touch

LET'S BUILD YOUR DREAM HOME

If you like what you've seen inside these pages, let's start creating. If you're not sure where to begin, we can help guide you into a space where you can start realising your dream home.

We're here to help make it happen.



ScyonWalls



scyon.com.au

jameshardie.com.au

\* These images kindly provided by our friends at Three Birds Renovations.





# The Look Book

## EXTERIORS

---



For more information, warnings and warranties please see our website and review the relevant installation and technical guides. Copyright ©2017 James Hardie Australia Pty Ltd ABN 12 084 635 558.  
™ and ® denotes a trademark and registered mark owned by James Hardie Technology Ltd.