



**ASPECTA<sup>®</sup>**  
**ONE**  
**ORNAMENTAL**

**A NEW DIMENSION IN FLOORING**

# TIMELESS MOTIFS INSPIRED BY NATURE.

The rich diversity of shapes, color and life found in nature come alive indoors with Aspecta® One Ornamental. Building on a solid foundation of beautiful wood and stone looks, these stunning overlay designs accent in all the right ways to create interior spaces that feel just right.

**Declare.**

**Aspecta One - Luxury Vinyl Tile**  
**Metroflor Corporation**

Final Assembly: Zhangjiagang, Jiangsu, China  
Life Expectancy: 20 Years  
End of Life Options: Recyclable (100%)

**Ingredients:**

Filler: Calcium Carbonate; Polymer: **PVC**;  
Plasticizer: Dioctyl Terephthalate (DOTP);  
Modifiers: 2-Propenenitrile, Polymer with  
1,3-Butadiene, Methyl Methacrylate, Copolymer  
with Butyl Acrylate; Stabilizers: Calcium  
Stearate, Zinc Stearate, Lanthanum(3+)  
Stearate; UV Acrylic Layer: Polyurethane Foams,  
1,6-Hexanediol Diacrylate, Trimethylolpropane  
Triacrylate (TMPTA), Dipropylene Glycol  
Diacrylate, Fumed Silica, Crystalline-Free,  
Hydroxycyclohexyl Phenyl Ketone; Pigment:  
Carbon Black; Inks: C.I. Pigment Red 221, Vinyl  
Chloride-Vinyl Acetate Copolymers

**Living Building Challenge Criteria:**

HCW-0003	EXP: 01 APR 2018
VOC Content: N/A	VOC Emissions: CDPH Compliant
<b>Declaration Status</b>	<input type="checkbox"/> LBC Red List Free
	<input type="checkbox"/> LBC Compliant
	<input checked="" type="checkbox"/> Declared

MANUFACTURER RESPONSIBLE FOR LABEL ACCURACY  
INTERNATIONAL LIVING FUTURE INSTITUTE™ [declareproducts.com](http://declareproducts.com)

Aspecta® proudly supports the International Living Future Institute™ and its Declare™ Label transparency program, which encourages manufacturers to disclose the ingredients in their products, thus allowing consumers to make informed decisions about the materials they purchase.





# MASQUERADE

Large medallion-esque patterns entice and intrigue the eye in fresh, surprising ways. Paired with a bold or neutral base, Masquerade will appear as either a positive overprint for a painted impression or a negative overprint that creates the hard-edge effect of carving.



**MASQUERADE**

**MIDTOWN**

These authentic, rough concrete styles feature traces of the production process including wood imprints, drying pores and slight chalk efflorescence. Neutral, earthy tones provide the perfect backdrop for the captivating Masquerade overprint.

Size: 24" x 24"/609.6mm x 609.6mm

Edge Detail: Square

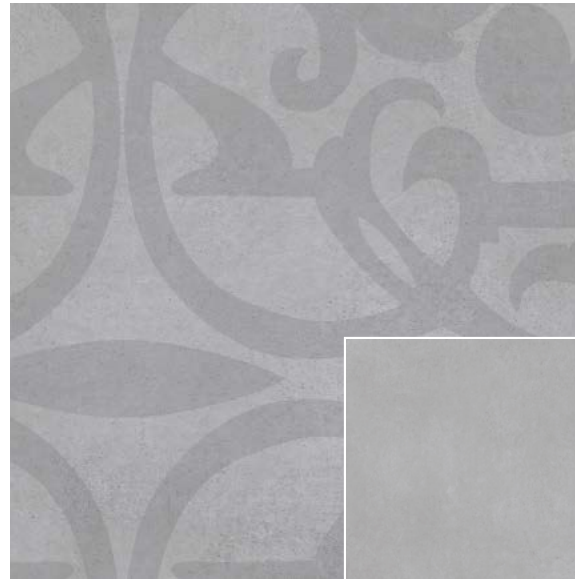
Emboss: Textured Concrete

## MASQUERADE MIDTOWN / MIDTOWN



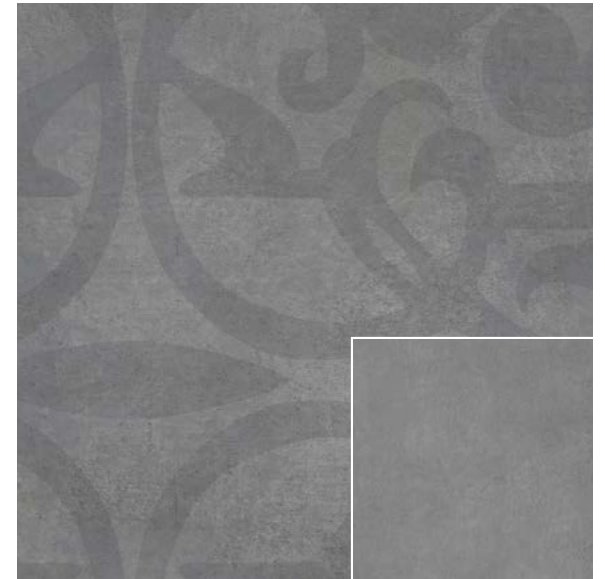
**MASQUERADE MIDTOWN**  
COLOR: GRAMERCY  
PATTERN# 1722361-Q14

**MIDTOWN**  
COLOR: GRAMERCY  
PATTERN# 1722361



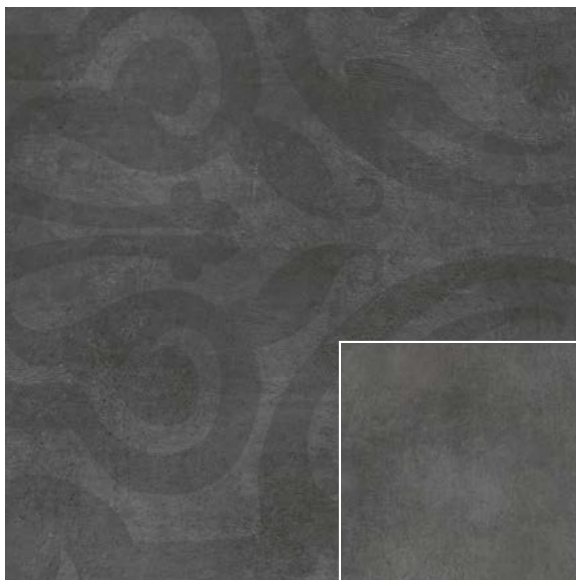
**MASQUERADE MIDTOWN**  
COLOR: FLATIRON  
PATTERN# 1722362-Q15

**MIDTOWN**  
COLOR: FLATIRON  
PATTERN# 1722362



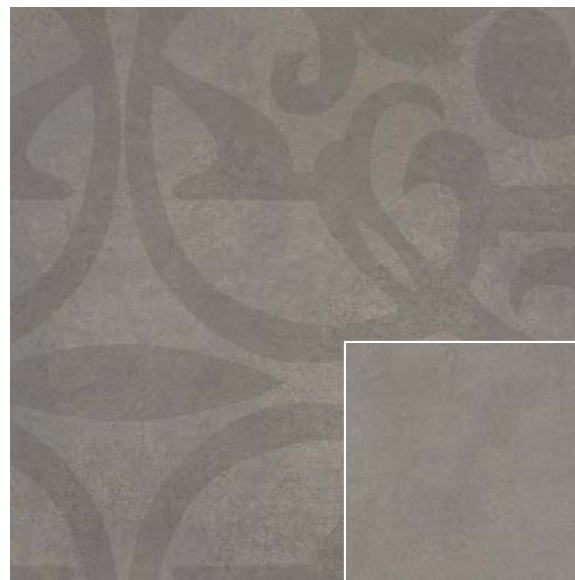
**MASQUERADE MIDTOWN**  
COLOR: EMPIRE  
PATTERN# 1722367-Q16

**MIDTOWN**  
COLOR: EMPIRE  
PATTERN# 1722367



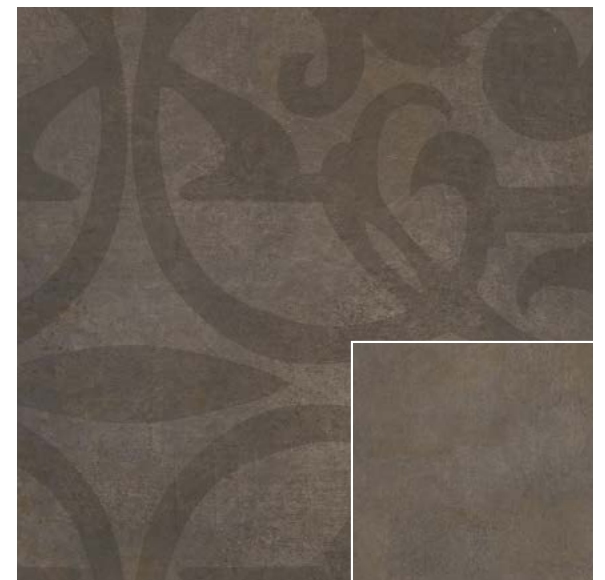
**MASQUERADE MIDTOWN**  
COLOR: ROCKEFELLER  
PATTERN# 1722369-Q17

**MIDTOWN**  
COLOR: ROCKEFELLER  
PATTERN# 1722369



**MASQUERADE MIDTOWN**  
COLOR: GRACE  
PATTERN# 1722360-Q18

**MIDTOWN**  
COLOR: GRACE  
PATTERN# 1722360



**MASQUERADE MIDTOWN**  
COLOR: BROWNSTONE  
PATTERN# 1722364-Q27

**MIDTOWN**  
COLOR: BROWNSTONE  
PATTERN# 1722364

**MASQUERADE**  

---

**MIDTOWN PRISM**



Midtown Prism brings together striking, on-trend colors from around the world with authentic, rough concrete styles. Combined with a Masquerade overprint, these bold hues energize interior spaces whether used in monochromatic or multicolored design schemes.

Size: 24" x 24"/609.6mm x 609.6mm

Edge Detail: Square

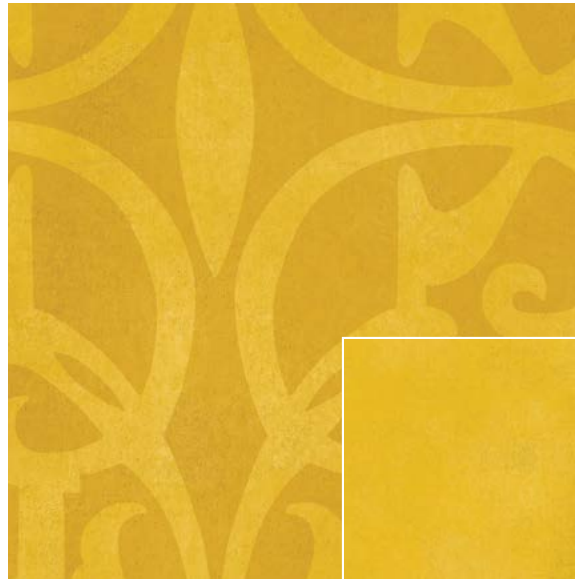
Emboss: Textured Concrete

## MASQUERADE MIDTOWN PRISM / MIDTOWN PRISM



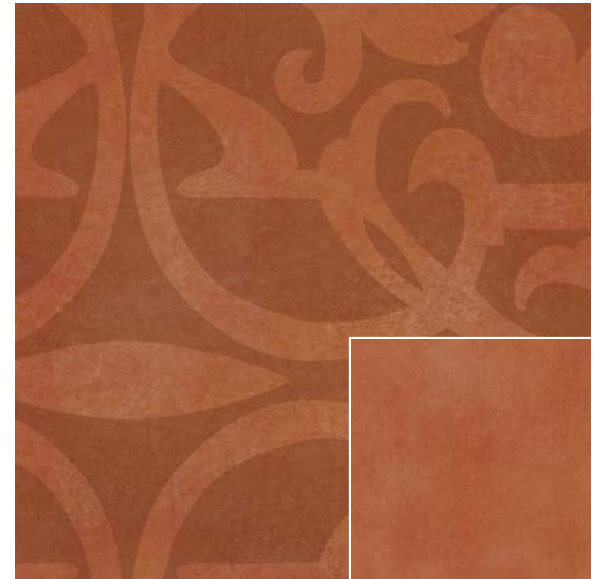
**MASQUERADE MIDTOWN PRISM**  
COLOR: GREEN  
PATTERN# Q6-17223618

**MIDTOWN PRISM**  
COLOR: GREEN  
PATTERN# 17223618



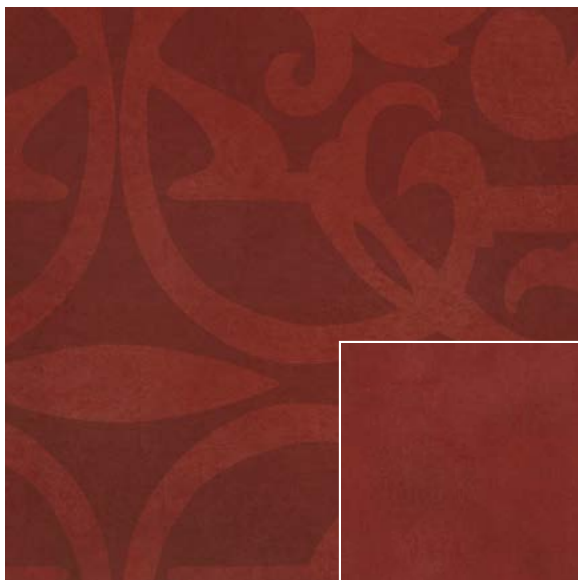
**MASQUERADE MIDTOWN PRISM**  
COLOR: YELLOW  
PATTERN# Q5-17223619

**MIDTOWN PRISM**  
COLOR: YELLOW  
PATTERN# 17223619



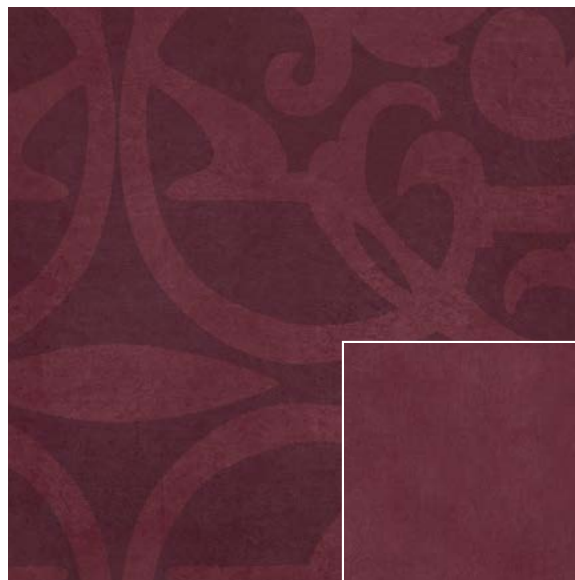
**MASQUERADE MIDTOWN PRISM**  
COLOR: ORANGE  
PATTERN# Q4-17223620

**MIDTOWN PRISM**  
COLOR: ORANGE  
PATTERN# 17223620



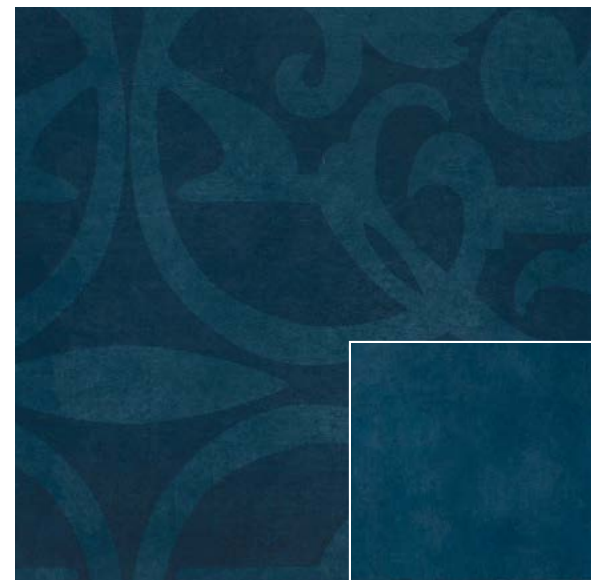
**MASQUERADE MIDTOWN PRISM**  
COLOR: RED  
PATTERN# Q3-17223621

**MIDTOWN PRISM**  
COLOR: RED  
PATTERN# 17223621



**MASQUERADE MIDTOWN PRISM**  
COLOR: PLUM  
PATTERN# Q1-17223622

**MIDTOWN PRISM**  
COLOR: PLUM  
PATTERN# 17223622



**MASQUERADE MIDTOWN PRISM**  
COLOR: BLUE  
PATTERN# Q2-17223623

**MIDTOWN PRISM**  
COLOR: BLUE  
PATTERN# 17223623

# MASQUERADE

---

Size: 24" x 24"/609.6mm x 609.6mm

## MASQUERADE MIDTOWN



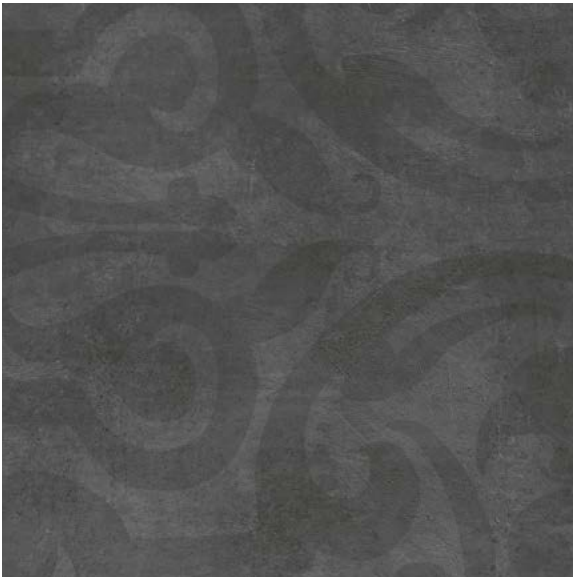
MASQUERADE MIDTOWN  
COLOR: GRAMERCY - PATTERN# 1722361-Q14



MASQUERADE MIDTOWN  
COLOR: FLATIRON - PATTERN# 1722362-Q15



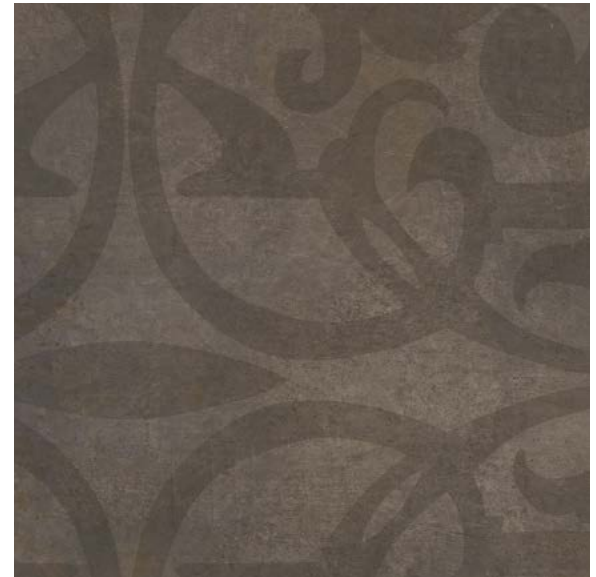
MASQUERADE MIDTOWN  
COLOR: EMPIRE - PATTERN# 1722367-Q16



MASQUERADE MIDTOWN  
COLOR: ROCKEFELLER - PATTERN# 1722369-Q17



MASQUERADE MIDTOWN  
COLOR: GRACE - PATTERN# 1722360-Q18



MASQUERADE MIDTOWN  
COLOR: BROWNSTONE - PATTERN# 1722364-Q27

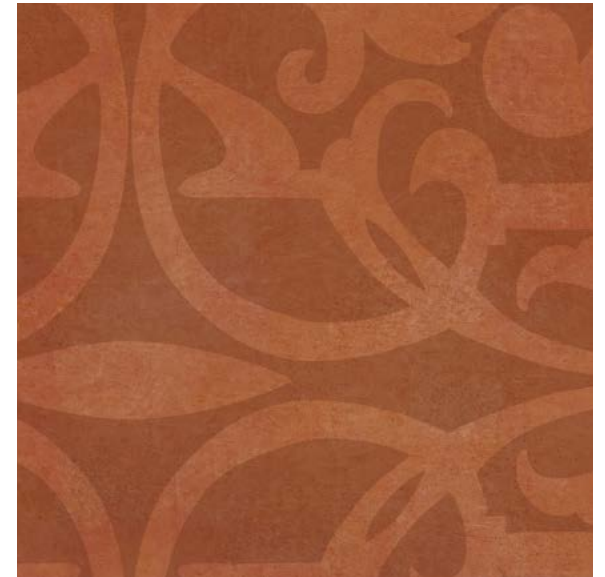
## MASQUERADE MIDTOWN PRISM



MASQUERADE MIDTOWN PRISM  
COLOR: GREEN - PATTERN# Q6-17223618



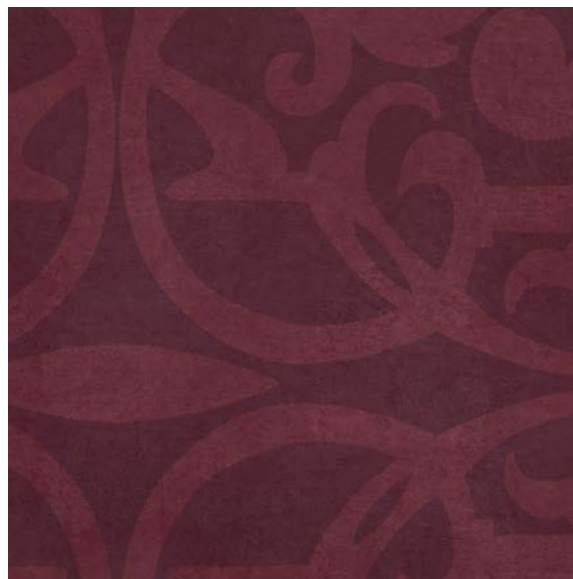
MASQUERADE MIDTOWN PRISM  
COLOR: YELLOW - PATTERN# Q5-17223619



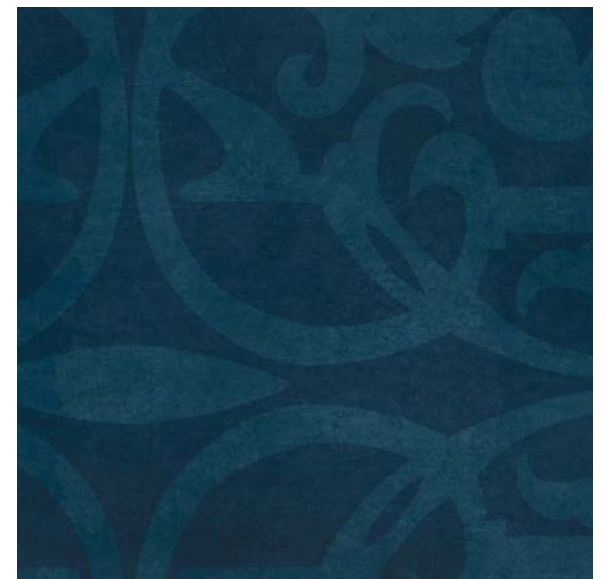
MASQUERADE MIDTOWN PRISM  
COLOR: ORANGE - PATTERN# Q4-17223620



MASQUERADE MIDTOWN PRISM  
COLOR: RED - PATTERN# Q3-17223621



MASQUERADE MIDTOWN PRISM  
COLOR: PLUM - PATTERN# Q1-17223622



MASQUERADE MIDTOWN PRISM  
COLOR: BLUE - PATTERN# Q2-17223623



## DAMASK

Inspired by heirloom Persian rugs and the emerging “rough luxe” distressed motif found in specialty woven carpet, Damask delivers a distinctive high-end look that takes us back in time with its layered richness and time-worn appearance.





**DAMASK**

**MIDTOWN**

The classic neutrals of Midtown meet the time-honored beauty of heirloom and specialty woven carpets reflected in our Damask overlay. These perfect pairings will complement a broad range of interiors with their layered richness and unique textures.

Size: 24" x 24"/609.6mm x 609.6mm

Edge Detail: Square

Emboss: Textured Concrete

## DAMASK MIDTOWN / MIDTOWN



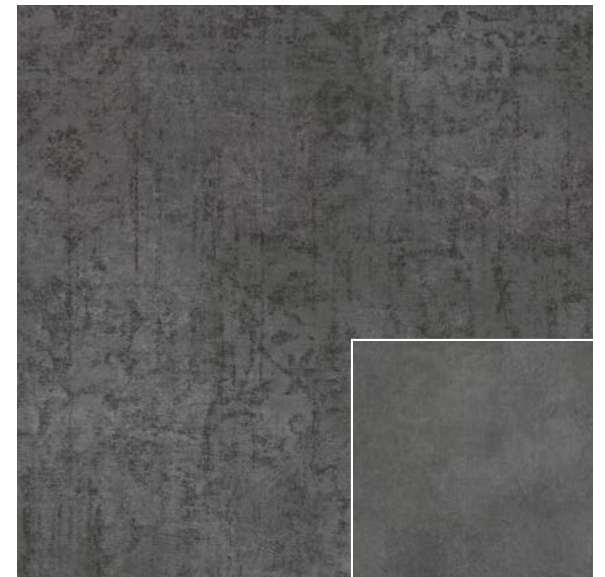
**DAMASK MIDTOWN**  
COLOR: BROWNSTONE  
PATTERN# 1722364-D9

**MIDTOWN**  
COLOR: BROWNSTONE  
PATTERN# 1722364



**DAMASK MIDTOWN**  
COLOR: GRAMERCY  
PATTERN# 1722361-D10

**MIDTOWN**  
COLOR: GRAMERCY  
PATTERN# 1722361



**DAMASK MIDTOWN**  
COLOR: ROCKEFELLER  
PATTERN# 1722369-D11

**MIDTOWN**  
COLOR: ROCKEFELLER  
PATTERN# 1722369



**DAMASK**

**WASHED WOOD**



The Damask Washed Wood collection offers endless design possibilities with its unexpected juxtaposition of rugged, limed wood and the classic woven textures of heirloom and specialty carpets.

Size: 7.87" x 48.11"/200mm x 1222mm

Edge Detail: Square

Emboss: Barnside

## DAMASK WASHED WOOD / WASHED WOOD



DAMASK WASHED WOOD - COLOR: MIDNIGHT SILVER - PATTERN# 1326816-D17



WASHED WOOD - COLOR: MIDNIGHT - PATTERN# 1326816



DAMASK WASHED WOOD - COLOR: MIDNIGHT BLACK - PATTERN# 1326816-D18



WASHED WOOD - COLOR: MIDNIGHT - PATTERN# 1326816



DAMASK WASHED WOOD - COLOR: ARCTIC - PATTERN# 1326819-D22



WASHED WOOD - COLOR: ARCTIC - PATTERN# 1326819

The background of the entire page is a close-up, vertical view of several wooden planks. The planks are arranged in a staggered pattern, showing various wood grain patterns, including straight, wavy, and knotted textures. The color palette is a range of natural wood tones, from light tan and beige to deep, dark browns and blacks, particularly in the knots and grain details. The lighting is even, highlighting the natural texture and grain of the wood.

**DAMASK**  

---

**SHIPWRIGHT**

Combine the popularity of oak with the rich texture of our Damask overlay for a stunningly beautiful floor that will complement a broad range of interiors.

Size: 7.87" x 48.11"/200mm x 1222mm  
Edge Detail: Square  
Emboss: In-Register

## DAMASK SHIPWRIGHT / SHIPWRIGHT



DAMASK SHIPWRIGHT - COLOR: DANZIG - PATTERN# 1329411-D22



SHIPWRIGHT - COLOR: DANZIG - PATTERN# 1329411



DAMASK SHIPWRIGHT - COLOR: MONARCH - PATTERN# 1329415-D24



SHIPWRIGHT - COLOR: MONARCH - PATTERN# 1329415



DAMASK SHIPWRIGHT - COLOR: LYNX - PATTERN# 1329416-D25



SHIPWRIGHT - COLOR: LYNX - PATTERN# 1329416



DAMASK SHIPWRIGHT - COLOR: PIONEER - PATTERN# 1329418-D27



SHIPWRIGHT - COLOR: PIONEER - PATTERN# 1329418

The background of the entire page is a close-up photograph of a wooden surface. It features vertical planks of wood with a natural grain and some knots. Overlaid on this is a grid of thin, light-colored lines that divide the space into rectangular sections, creating a subtle architectural pattern.

**DAMASK**

**ALPINE RIDGE**

The lightly faded, worn and weathered details of these Alpine Ridge planks take on an even more enchanting luster when matched with our Damask overlay.

Size: 7.87" x 48.11"/200mm x 1222mm

Edge Detail: Square

Emboss: Sawcut

## DAMASK ALPINE RIDGE / ALPINE RIDGE



DAMASK ALPINE RIDGE - COLOR: MICA - PATTERN# 1328519-D25



ALPINE RIDGE - COLOR: MICA - PATTERN# 1328519



DAMASK ALPINE RIDGE - COLOR: MOONSTONE - PATTERN# 1328510-D26



ALPINE RIDGE - COLOR: MOONSTONE - PATTERN# 1328510

# DAMASK

Planks are available in 7.87" x 48.11"/200mm x 1222mm

Tiles are available in 24" x 24"/609.6mm x 609.6mm

## DAMASK MIDTOWN



DAMASK MIDTOWN  
COLOR: BROWNSTONE - PATTERN# 1722364-D9



DAMASK MIDTOWN  
COLOR: GRAMERCY - PATTERN# 1722361-D10



DAMASK MIDTOWN  
COLOR: ROCKEFELLER - PATTERN# 1722369-D11

## DAMASK WASHED WOOD



DAMASK WASHED WOOD - COLOR: MIDNIGHT SILVER - PATTERN# 1326816-D17



DAMASK WASHED WOOD - COLOR: MIDNIGHT BLACK - PATTERN# 1326816-D18



DAMASK WASHED WOOD - COLOR: ARCTIC - PATTERN# 1326819-D22

## DAMASK ALPINE RIDGE



DAMASK ALPINE RIDGE - COLOR: MICA - PATTERN# 1328519-D25



DAMASK ALPINE RIDGE - COLOR: MOONSTONE - PATTERN# 1328510-D26

## DAMASK SHIPWRIGHT



DAMASK SHIPWRIGHT - COLOR: DANZIG - PATTERN# 1329411-D22



DAMASK SHIPWRIGHT - COLOR: MONARCH - PATTERN# 1329415-D24



DAMASK SHIPWRIGHT - COLOR: LYNX - PATTERN# 1329416-D25



DAMASK SHIPWRIGHT - COLOR: PIONEER - PATTERN# 1329418-D27



## MALTA

Intricate and exotic, Malta was born out of the Moorish design influence which features ornate details and elements of nature. Coupled with the beauty of natural woodgrains, Malta works well in vintage, mid-century, and contemporary settings.









**MALTA**  

---

**SHIPWRIGHT**

First, we reinvented Oak by paying homage to its natural imperfections along with the cutting and planing marks. Next, we introduced it to our Malta overlay. The result is a delight for the senses.

Size: 7.87" x 48.11"/200mm x 1222mm

Edge Detail: Square

Emboss: In-Register

## MALTA SHIPWRIGHT / SHIPWRIGHT



**MALTA SHIPWRIGHT** - COLOR: MONARCH PLUM - PATTERN# 1329415-M14



**SHIPWRIGHT** - COLOR: MONARCH - PATTERN# 1329415



**MALTA SHIPWRIGHT** - COLOR: MONARCH BLUE - PATTERN# 1329415-M15



**SHIPWRIGHT** - COLOR: MONARCH - PATTERN# 1329415



MALTA

ALPINE RIDGE

The uniquely beautiful story told by the lightly faded and weathered details of these woodgrains moves to an entirely new level when introduced to our Malta overlay.

Size: 7.87" x 48.11"/200mm x 1222mm

Edge Detail: Square

Emboss: Sawcut

## MALTA ALPINE RIDGE / ALPINE RIDGE



MALTA ALPINE RIDGE - COLOR: MICA PLUM - PATTERN# 1328519-M12



ALPINE RIDGE - COLOR: MICA - PATTERN# 1328519



MALTA ALPINE RIDGE - COLOR: MICA BLUE - PATTERN# 1328519-M13



ALPINE RIDGE - COLOR: MICA - PATTERN# 1328519



MALTA ALPINE RIDGE - COLOR: MICA BROWN - PATTERN# 1328519-M14



ALPINE RIDGE - COLOR: MICA - PATTERN# 1328519



MALTA ALPINE RIDGE - COLOR: MOONSTONE SILVER - PATTERN# 1328510-M20



ALPINE RIDGE - COLOR: MOONSTONE - PATTERN# 1328510

# MALTA

---

Size: 7.87" x 48.11"/200mm x 1222mm

## MALTA SHIPWRIGHT



MALTA SHIPWRIGHT - COLOR: MONARCH PLUM - PATTERN# 1329415-M14



MALTA SHIPWRIGHT - COLOR: MONARCH BLUE - PATTERN# 1329415-M15

## MALTA ALPINE RIDGE



MALTA ALPINE RIDGE - COLOR: MICA PLUM - PATTERN# 1328519-M12



MALTA ALPINE RIDGE - COLOR: MICA BLUE - PATTERN# 1328519-M13



MALTA ALPINE RIDGE - COLOR: MICA BROWN - PATTERN# 1328519-M14



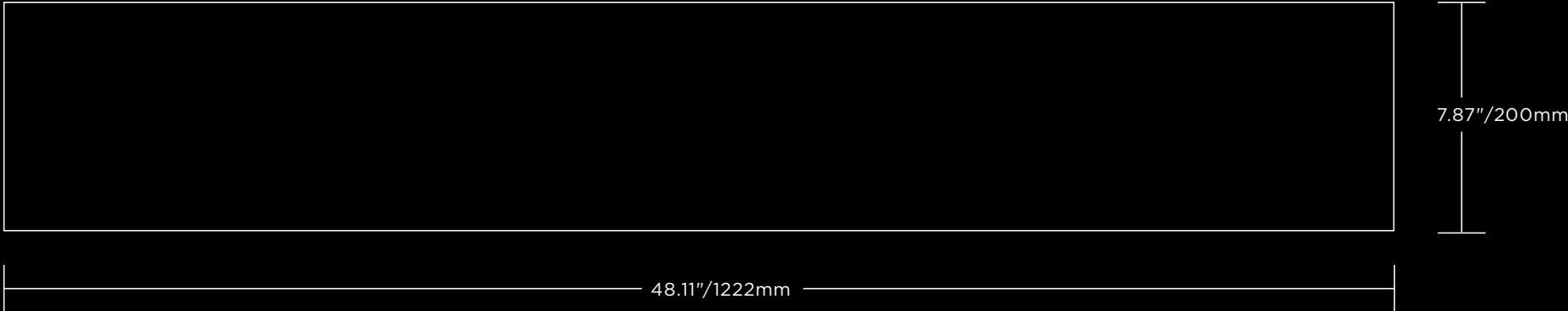
MALTA ALPINE RIDGE - COLOR: MOONSTONE SILVER - PATTERN# 1328510-M20



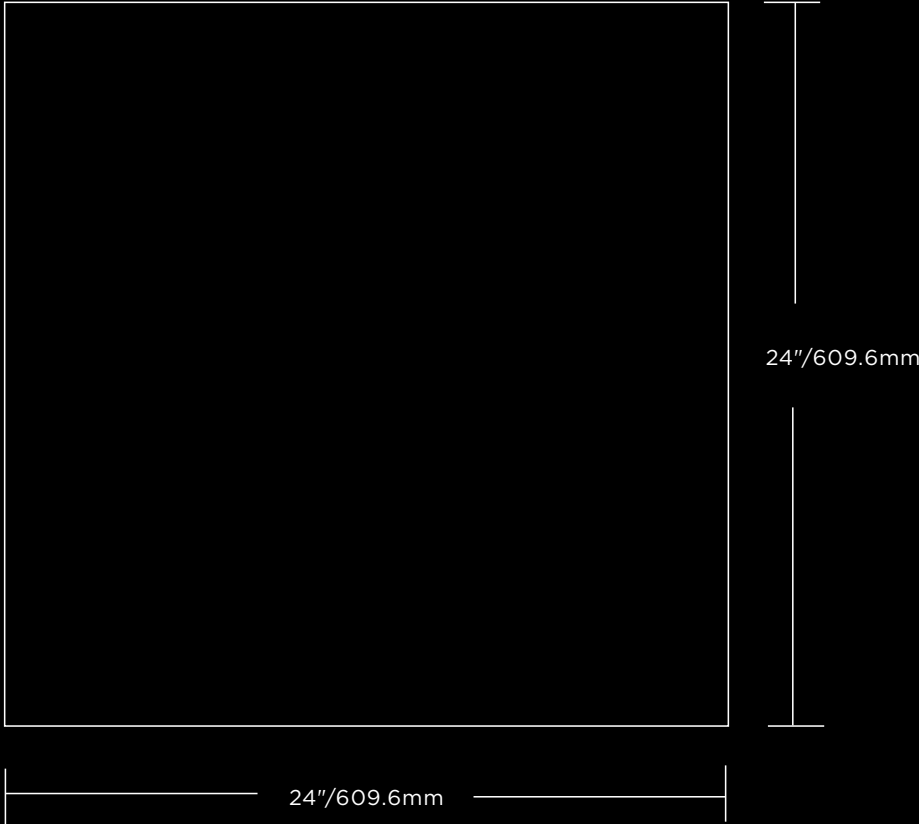
# TECHNICAL DETAILS

Aspecta® One Ornamental planks and tiles are available in two sizes:

## PLANK



## TILE

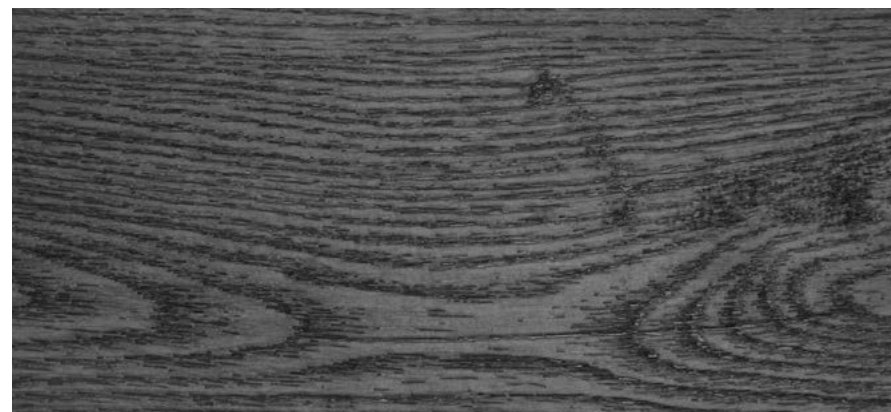




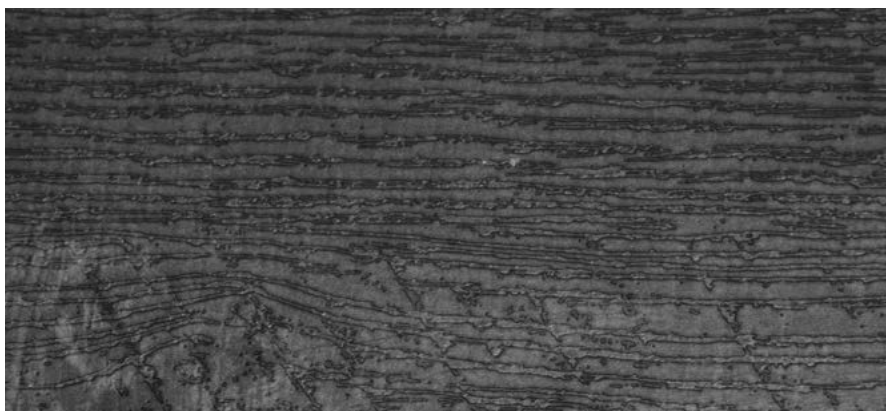
Discover Aspecta® One Ornamental's beautiful collection of in-register and specialty-design Wood embosses. The Tile collection boasts an exclusive embossing technique - Textured Concrete.



**BARNSIDE** - The relief-like surface image of Barnside reflects natural aged wooden planks and gives rustic wood interiors a truly authentic finish.



**IN-REGISTER SHIPWRIGHT** - This beautiful oak is straight-grown and virtually knotless, with only slight imperfections as well as cutting and planing marks reflected in its surface.



**SAWCUT** - Unplaned and unpolished, Sawcut is construction timber cut directly from tree trunks, with sawing marks and sawdust intact. This gives this wood unmatched character and authenticity.



**TEXTURED CONCRETE** - With its rough texture, this freshly dried industrial concrete shows traces of the preparation process, such as drying pores and the beat trace of smoothing tools. Perfect for adding an industrial feel to any setting.

# TECHNICAL DETAILS

<b>PHYSICAL PROPERTIES &amp; PACKAGING - PLANK (DRYBACK - 0.098" GAUGE / 22MIL WEAR LAYER)</b>	
Size	7.87" x 48.11" (200mm x 1222mm)
Construction	Solid Vinyl Tile/LVT
Use	Commercial
Wear Layer	22 mil (0.55mm)
Finish	Urethane Coating with Ceramic Bead Particles
Gauge	0.098" (2.5mm)
Pieces/Carton	12
Coverage/Piece	2.63 Sq.Ft. (0.244 Sq.M.)
Coverage/Carton	31.56 Sq.Ft. (2.93 Sq.M.)
Coverage/Pallet	40 Cartons (1,262.4 Sq.Ft./117.2 Sq.M.)
Coverage/Container	40 Pallets (50,496 Sq.Ft./4,688 Sq.M.)
Aspecta® One Limited Commercial Warranty¹	Material: 20 Years (100%) Labor: 10 Years (Pro-Rated)

<b>PHYSICAL PROPERTIES &amp; PACKAGING - TILE (DRYBACK - 0.098" GAUGE / 22MIL WEAR LAYER)</b>	
Size	24" x 24" (609.6mm x 609.6mm)
Construction	Solid Vinyl Tile/LVT
Use	Commercial
Wear Layer	22 mil (0.55mm)
Finish	Urethane Coating with Ceramic Bead Particles
Gauge	0.098" (2.5mm)
Pieces/Carton	9
Coverage/Piece	4 Sq.Ft. (0.371 Sq.M.)
Coverage/Carton	36 Sq.Ft. (3.34 Sq.M.)
Coverage/Pallet	20 Cartons (720 Sq.Ft./66.8 Sq.M.)
Coverage/Container	66 Pallets (47,520 Sq.Ft./4,408.8 Sq.M.)
Aspecta® One Limited Commercial Warranty¹	Material: 20 Years (100%) Labor: 10 Years (Pro-Rated)

## FOOTNOTES

- 1) Aspecta® One Limited Commercial Warranty: Please see full terms and conditions of our warranties at [www.aspecta flooring.com](http://www.aspecta flooring.com).
- 2) CAN/ULC S102.2-10: Results obtained when installed with Prevail® 4000 2-Part Epoxy Adhesive or with Prevail® 6000 PSA (Pressure Sensitive Adhesive)

<b>NORTH AMERICAN STANDARDS - MANUFACTURING &amp; USAGE (ASTM F1700)</b>			
<b>Standard</b>	<b>Description</b>	<b>Requirements</b>	<b>Results</b>
ASTM F1700	Classification	Refer to Standard	Class III, Type B
ASTM F386	Thickness	±0.005"	Passes Requirements
ASTM F410	Wear Layer Thickness	Commercial Classification: ≥ 20mil (0.5mm)	Passes Requirements
ASTM F2421/ ASTM F2055	Size & Squareness	Size: ±0.016"/Linear Foot; Squareness: ≤0.010"	Passes Requirements
ASTM F1914	Residual Indentation	Average <8%; Maximum - Any Sample ≤10%	Surpasses Requirements
ASTM F137	Flexibility	No cracks/breaks (1"/25.4mm Mandrel)	Surpasses Requirements
ASTM F2199	Dimensional Stability	≤0.020"/Linear Foot	Surpasses Requirements
ASTM F925	Chemical Resistance	No more than "Slight Change"	Passes Requirements
ASTM F1514	Resistance to Heat	Average & Max ΔE < 8.0	Surpasses Requirements
ASTM F1515	Resistance to Light	Average & Max ΔE < 8.0	Surpasses Requirements

<b>NORTH AMERICAN STANDARDS - SAFETY &amp; PERFORMANCE</b>			
<b>Standard</b>	<b>Description</b>	<b>Requirements</b>	<b>Results</b>
ASTM E648	Radiant Panel (Critical Radiant Flux)	Class I: ≥ 0.45 W/cm <sup>2</sup>	Passes Requirements
ASTM E662	Smoke Density	Flaming & Non-Flaming ≤ 450	Passes Requirements
CAN/ULC S102.2-10 <sup>2</sup>	Surface Burning Characteristics, Canada	Use dependent	Flame Spread Rating (FSR): ≤15 Smoke Developed Class. (SDC): ≤150
CDPH/EHLB/ Standard v1.1	VOCs/TVOCs, Formaldehyde	Refer to Standard	Passes Requirements
ASTM F963	Heavy Metals	Refer to Standard	Passes Requirements
ASTM D7823 / CPSC-CH-C1001-09.3	Phthalates	Refer to Standard	Meets CPSIA Guidelines
ASTM D2047	Coefficient of Friction / Slip Resistance	N/A	≥0.6 (Dry)
ASTM F970	Static Load Limit	±0.005", 250-Lbs. Load	≥1,000 lbs. (Surpasses Requirements)
ASTM D4060	Abrasion Resistance	N/A	≥20,000 cycles (Varies with emboss)

<b>NORTH AMERICAN STANDARDS - SOUND (TESTED WITH PREVAIL® GLUE-DOWN PAD OVER 6" CONCRETE SLAB WITH DROP-CEILING ASSEMBLY)</b>			
<b>Standard</b>	<b>Description</b>	<b>Requirements</b>	<b>Results</b>
ASTM E90 & ASTM E413	Airborne Sound Transmission Loss	Sound Transmission Class (STC) ≥ 50	STC 61 (Surpasses Requirements)
ASTM E492 & ASTM E989	Impact Sound Transmission (Floor-Ceiling Assemblies)	Impact Insulation Class (IIC) ≥ 50	IIC 70 (Surpasses Requirements)



**ASPECTA**  
ONE  
ORNAMENTAL

Visionary Living Commercial Floors  
75D Carnarvon St,  
Silverwater, 2128,  
NSW, Australia  
Alex Morellato  
Commercial Director  
Tel: +61 (0) 455 557353  
alex@visionary-living.com.au  
Stuart Burnett  
Sales Manager  
Tel: +61 (0) 439 833441  
stuart@visionary-living.com.au

ERME Office:  
ASPECTA BV  
Argon 37a  
4751XC Oud Gastel  
The Netherlands  
Tel: +31 (0) 88 1662500  
info@aspectaflooring.com

[ASPECTAFLOORING.COM](http://ASPECTAFLOORING.COM)