



Horizontal cooking

A design for every top chef
thermaline M2M-Made to Measure



You talk...

Production, Precision and Tradition for over 100 years

Swiss Design delivered around the world from a world class factory based in Sursee (CH). Made for your Excellence.

A strong passion for innovation, a special attention to customers and a genuine belief in sustainability: these are the core values inspiring Electrolux Professional and supporting its vision.



...we listen

A story that dates back to 1871 and continues today, a history of Electrolux Professional Swiss designed products which is directly connected to the *thermaline* product family, global player in the market.

thermaline offers state-of-the-art technology, high quality, innovative design and easy-to-use appliances, thanks to the know-how that can be acquired over one hundred years of expertise. The elegance of the one-piece top products results in appliances that can fit into reduced spaces without sacrificing performance, cleanliness and attractiveness.



Incomparable Swiss design

Infinite combinations, reliable innovation, superior flexibility and the highest quality standards.



High performance & Reliability

Precise temperature control with perfect heat uniformity. Highly resistant construction with impeccable finishing.



Energy savings

Innovative solutions for high efficiency and savings. Less consumptions and lower running costs. Better for your business and for the environment.



Simple & Safe

Everything made easy. Superior ergonomics, maximum cleanability and operator safety guaranteed.



Elegant and unique

The result can only be your ideal kitchen, a product achieved with the same precision and passion of a fashion designer, a jewel of rare beauty, sturdy and functional, and which can only exist in two places in the world: in your mind and at the *thermaline* Production and Competence Center in Sursee, Switzerland.

An awarded design for every top chef

M2M-Made to Measure is created to offer every top chef a partner for life, meeting the requirements of **five-star hotels** and **fine dining restaurants** with the latest professional technology and ultimate kitchen design.

The team of experts is at your disposal to provide prompt answers to your needs and to make the kitchen of your dreams become a reality.



reddot award 2014
best of the best

The possibilities are endless



Customizable Frontpanel & Sidepanels. One-piece panels and consoles colored on request

Wide range of colors

Add the color to your cooking suite maintaining all the signature feature of *thermaline*, including unique retro-illuminated tempered glass display, metal knobs and handles featuring non-slip, heat resistant silicon grips, smart design of droptop and much more.

Customized solutions



Tailor-made elements, including salamander supports, pot racks, handrails and more to create ideal working conditions

More efficient space usage with cold, warm or neutral based

An option with stainless steel knob plates laser printed icons are clearly visible, detergent-friendly and resistant

Higher performance and extended life of induction with the dedicated cabinet for induction generators designed to guarantee perfect working conditions



Top functions are drop in allowing to have up to 4 operating sides increasing the usability even in narrow spaces

Front glass for the version with display, silicon parts of knobs and handles are in blue RAL 5011 as standard.

Color of the panels to be specified using RAL CLASSIC reference (up to 213 variations).



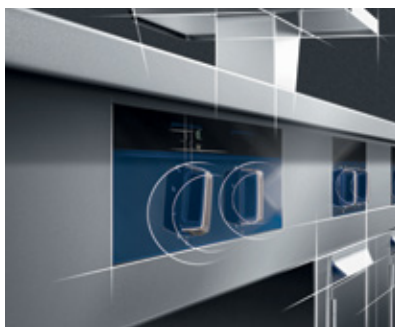
Optimal usability with shift and rotation positioning

All appliances are perfectly positioned according to the cooking processes and the organization of the cooking block.

You desire. We build



Whether you prefer a traditional gas burner or electric functions to prepare your recipes, or you cannot do without induction technology for your finest creations, the *thermaline* M2M-Made to Measure enables you to choose from among an extensive range of cooking options to suit your preferences, style of cooking and specialities.



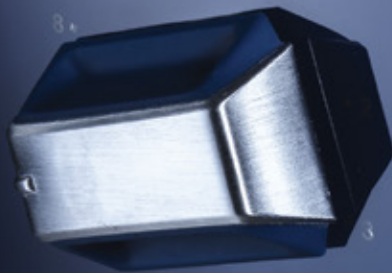
A large number of solutions and finishes are available, including remote controls, laser printed panels, anti scratch and finger prints finish and many other customized options.



An M2M-Made to Measure cooking suite is customized in every detail, each single part is designed for specific project including the internal double structure covered by 3 mm unique top for greater robustness.

**Highest flexibility
to combine all
the *thermaline*
appliances in
one block**





Energy Saving

thermaline appliances are designed for low water, consumption and for low emissions into the environment.

Most of electric functions feature standby mode for energy saving and quickly recovers maximum power.

Maximum efficiency. Pleasant work environment



Ecotop

The solid tops feature a very special coating: Ecotop, which guarantees high efficiency while reducing heat dispersion for a comfortable working environment.



Ecoflam

Shuts the burner off when the pan is removed, keeping only the pilot flame on and providing less heat dispersion for higher energy savings and for more pleasant working conditions.



Full surface induction

Allows up to 16 pots at the same time for higher productivity while enjoying all the benefits of induction technology: energy efficiency, better working conditions, easy and fast cleaning operations.





Reliable innovation makes your life easier



Efficient burners accelerate cooking times

Patented*, triple ring, highly efficient flower flame burners avoid heat dispersion, saving time and energy.



Perfection with even temperatures

Thanks to the patented**, highly efficient gas heating system, the high power chargrill cooking grate reaches an even temperature, providing perfect grilling results on the entire cooking surface.



Choose a cooking preference

The free-cooking top allows you to cook directly food in contact with the surface or indirectly, working with pots and pans for maximum flexibility.



Multipurpose cooking

Aquacooker is the ideal machine for multi-purpose preparations: you can use it for regeneration, as a bain marie and even as a pasta cooker.



Perfect heat uniformity

The easy-to-clean chrome-plated surfaces of the fry tops offer optimal propagation and perfect uniformity of heat thanks to innovative powerblocks.

Flexibility features double temperature operations

Freezer or refrigerated options in a single machine, the most flexible solution for your refrigeration needs.



Express your cooking creativity



High Power Chargrill



Pasta Cooker



HP Single Burner



Aquacooker

High performing

Customized high performing cooking suits with one piece top offer more than 40 options to satisfy most demanding preferences.

Larger range of appliances available, including unique multifunctional units, best-in-class energy efficient functions and solutions offered exclusively in M2M-Made to Measure execution.



- ▶ Cookers with open burners
- ▶ Electric griddles/fry tops with powerblocks
- ▶ Free-cooking tops
- ▶ Aquacookers
- ▶ Chargrills
- ▶ Pasta Cookers and Fryers
- ▶ Multi Braisers
- ▶ Pass-through ovens in both electric and gas versions

- ▶ Warming cabinets
- ▶ Refrigerated and freezer bases
- ▶ Single burner exclusively in M2M
- ▶ Solid top with Energy saving coating

These are only a few of the options which are offered in a variety of modular widths, depths, body heights and installations.



Free-Cooking Top



Refrigerated / Freezer Base



Full Surface Induction



High Power Induction Wok

À la carte

Almost limitless possibilities for "à la carte" customized orders from clients with every possible kitchen requirement.



 **Electrolux**
PROFESSIONAL

Exceptional functionality

The advanced design guarantees exceptional functionality and cleanliness. The control panel provides highly visible operating activity and the completely smooth glass surface assures maximum hygiene. While the precise temperature regulation (by 1° increments) guarantees optimal cooking results.

One-of-a-kind design



thermaline ensures the superior manufacturing design of tailor-made kitchens constructed with high quality stainless steel to create beautiful and sturdy appliances featuring seamless tops.

The extremely sturdy construction allows to work also with heavy and hot pots and pans without any deformation of the work top.

Safety of kitchen staff is guaranteed by a raised drip edge around fryers, pasta cookers, aquacookers and bain-maries which prevent contaminating liquids from entering the wells. The work top can be customized with rounded edges, splash guards, lowerings, protection rails.

Unparallel hygiene with H2 or H3 rounded edges of all storage bases and service cavities.







Essentia Teamed to serve you. Anytime, anywhere

Essentia is **the heart of superior Customer Care**, a dedicated service that ensures your competitive advantage. Provides you with the support you need and takes care of your processes with a **reliable service network**, a range of tailor-made exclusive services and innovative technology.

You can count on more than **2,200 authorized service partners**, **10,000 service engineers** in more than **149 countries**, and over **170,000 managed spare parts**.

Service network, always available

We stand ready and committed to support you with a **unique service network** that makes **your work-life easier**.

Service agreements, you can trust

You can choose from **flexible tailor-made service packages**, according to your business needs, offering a variety of maintenance and support services.

Keep your equipment performing

Undertaking correct maintenance in **accordance with Electrolux Professional Manuals** and recommendations is essential to avoid unexpected issues. **Electrolux Professional Customer Care** offers a number of **tailor-made service packages**. For more information contact your preferred Electrolux Professional **Authorized Service Partner**.





Excellence is central to everything we do.
By anticipating our customers' needs, we strive for
Excellence with our people, innovations, solutions and services.
To be the OnE making our customers' work-life easier,
more profitable – and truly sustainable every day.

Follow us on



professional.electrolux.com

Excellence

with the environment in mind

- ▶ All our factories are ISO 14001-certified
- ▶ All our solutions are designed for low consumption of water, energy, detergents and harmful emissions
- ▶ In recent years over 70% of our product features have been updated with the environmental needs of our customers in mind
- ▶ Our technology is RoHS and REACH compliant and over 95% recyclable
- ▶ Our products are 100% quality tested by experts

