

Installation Guide

Cladding

As a result of our AliWood Pty Ltd constant product improvement program, product changes may occur. As such, AliWood Pty Ltd reserves the right to change product without prior written notification.

Introduction

This guide will show you how to install AliWood Cladding.

IMPORTANT

Please read all the instructions prior to starting the installation of your Cladding. Understanding the process correctly will be the difference between a good and great result.

The recommendations detailed in this guide produced by AliWood Pty Ltd are formulated along the lines of good building practice. They are not intended to be an exhaustive statement of all the relevant data. Further, as the success of projects depend on factors outside the control of AliWood Pty Ltd (e.g. quality of workmanship, particular design, detail requirements, etc). Aliwood Pty Ltd accepts no responsibility for, or in connection with, the quality of the projects or their suitability when completed.

Tools Required:



Drop Saw



Tape Measure



Spirit Level



Driver Bit



Drill / Driver



Rubber Mallet



Installation

Brief Installation Sequence.

1. Building wrap to exterior walls
2. Inner piece of all 2-piece Corners, Flashings & Joiners
3. Starter channel
4. Cladding Boards
5. Outer piece of 2-piece Corners, Flashings & Joiners

Step 1 (see corresponding images on following 2 pages)

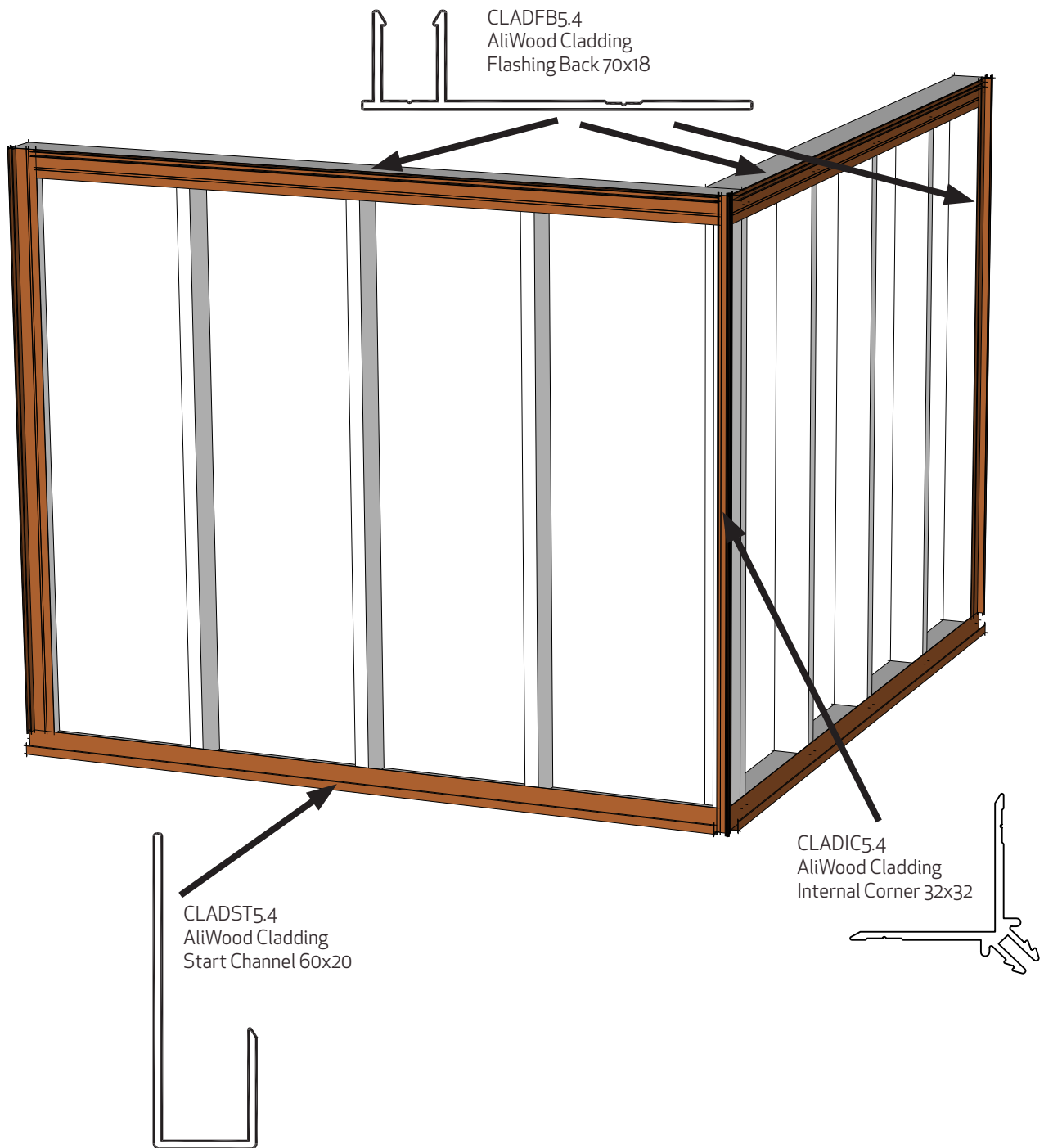
After timber framing / building wrap / top hat has been installed to manufacturers specifications, you are now ready to install AliWood Cladding.

Note: building wrap must be installed, also to manufacturers specifications, with enough overlap to completely seal the area. All penetrations through building wrap must be sealed.

- Check that wall is level and plumb, otherwise Cladding will not install correctly.
- Ascertain the starting point, should be the lowest part of the wall.
- Measure and cut inner piece of all 2-piece Corners, Flashings & Joiners. Fix these to the structure by screwing through the screw flutes in the profile. Fix at 600mm spacing maximum using a minimum 8g Wafer head screw to suit the structure you're fixing onto.
- Measure and cut Start Channel, fix to the structure along base of wall, (ensure this is level). Drill through horizontal start channel at 450mm intervals to allow for drainage.

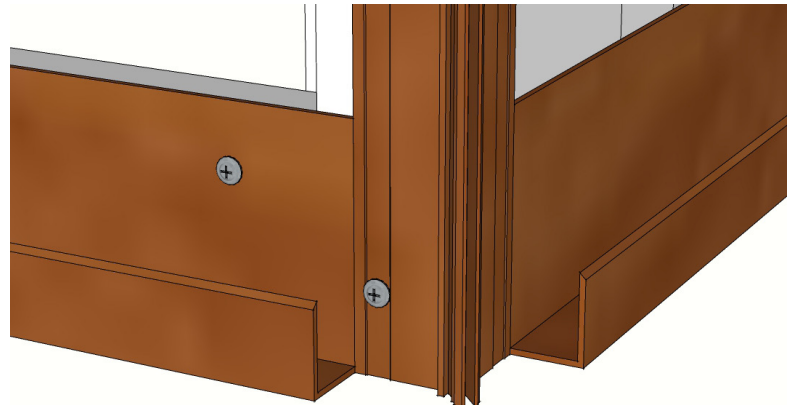
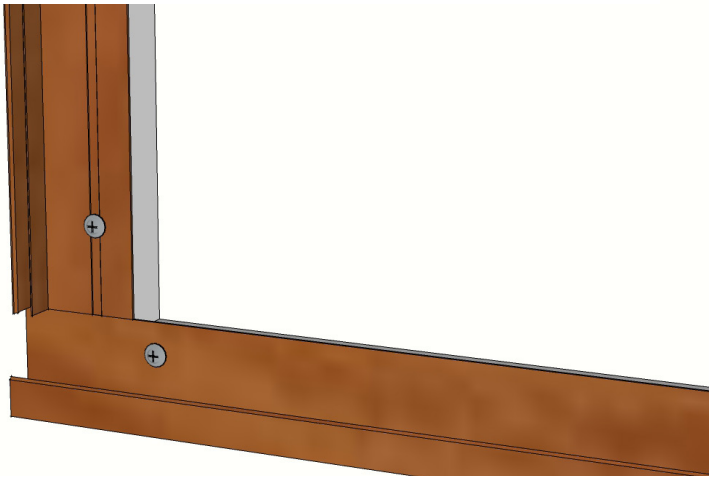
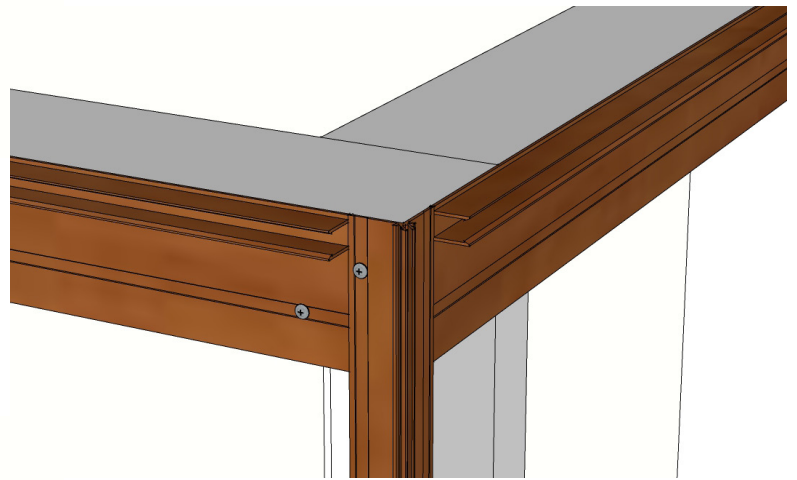
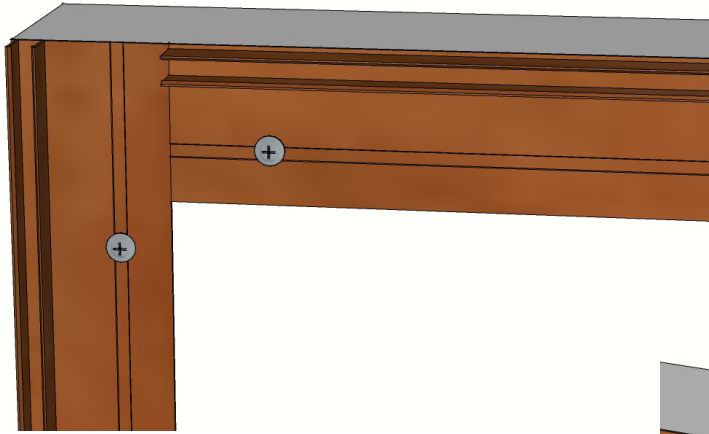
Installation

Step 1 (continued)



Installation

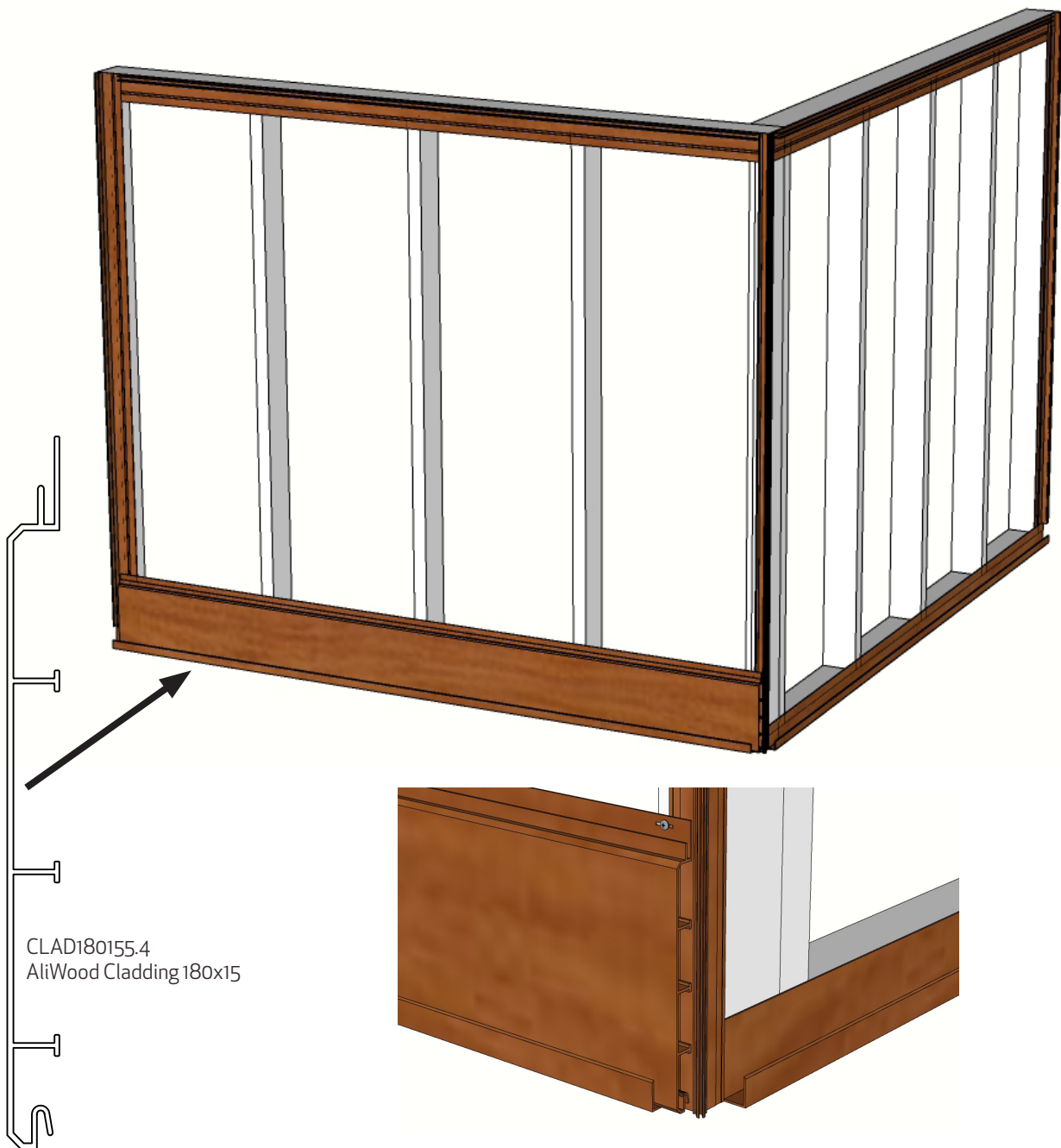
Step 1 (continued)



Installation

Step 2

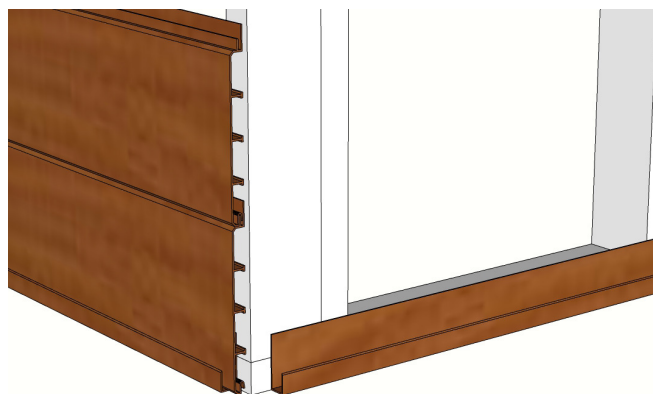
- Measure and cut first Cladding board.
- Install Cladding board, using 8-10g Wafer head screw to suit structure, into centre of slotted hole to allow for sideways movement (expansion and contraction). **Note:** Do not over tighten screws
- Fix at 600mm centres (maximum) along length of board. When cutting Cladding Board, leave 4mm gap at each end from touching vertical channel to allow for expansion & contraction.



Installation

Step 3

- Interlock next cladding board onto the first, make sure it is interlocked along entire length and fix to the frame/top hat same as first board.
- Check that board is level.



(Corner piece removed for clarity)

Installation

Step 4

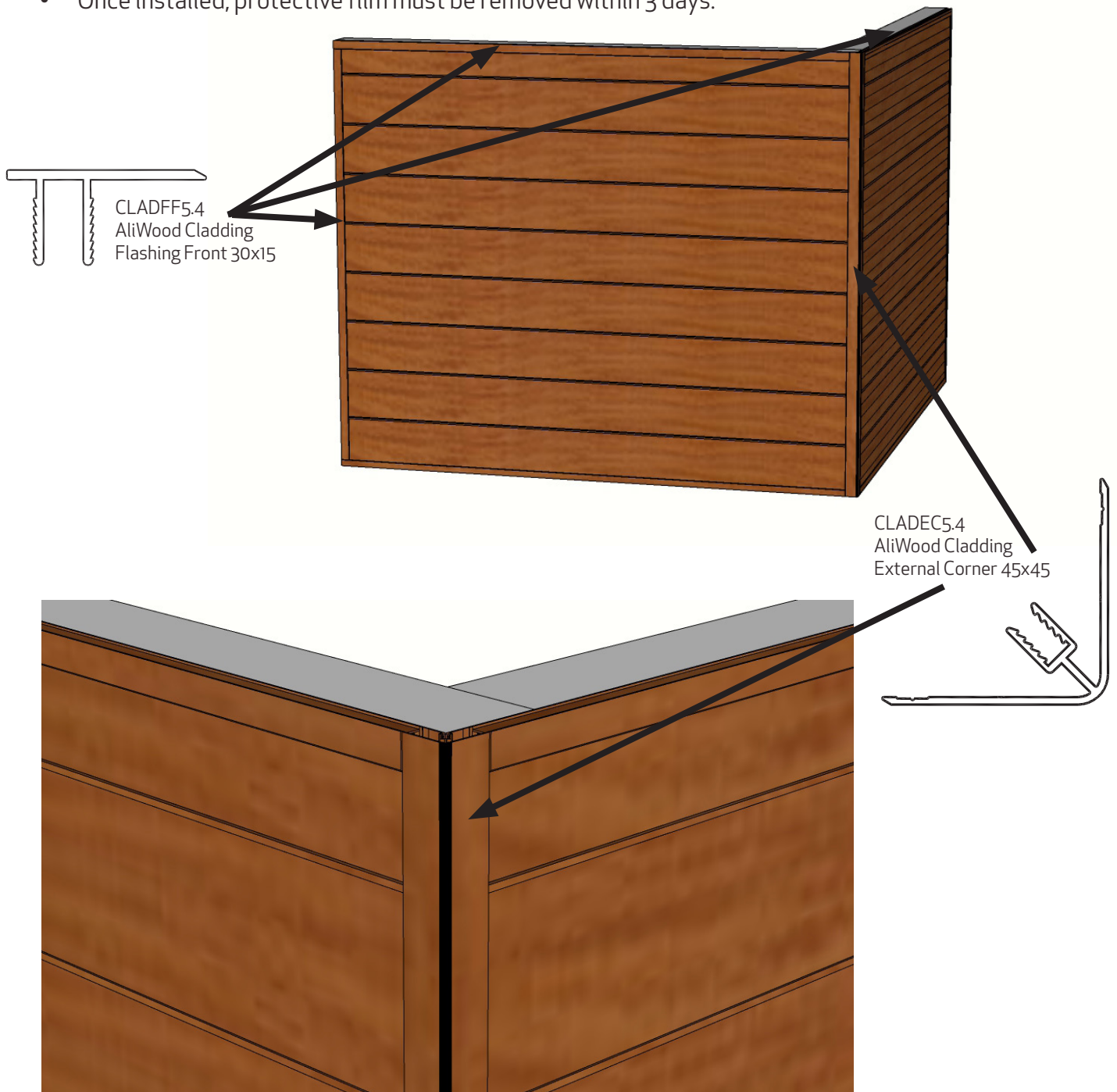
- Repeat previous step until top of wall. Top board may need to be trimmed to fit (cut lengthways if fitted horizontally). Fix to wall by screwing through top of cladding board, use packer if required (as shown in diagram).
- Clad other walls before inserting corner flashings.
- Measure and cut outer piece of 2-piece Corners, Flashings, and Joiners.
- Push firmly into place using a rubber mallet if necessary being careful not to damage the coating.



Installation

Step 5

- Remove protective film once job is complete, prior to fitting snap on pieces.
- Once installed, protective film must be removed within 3 days.

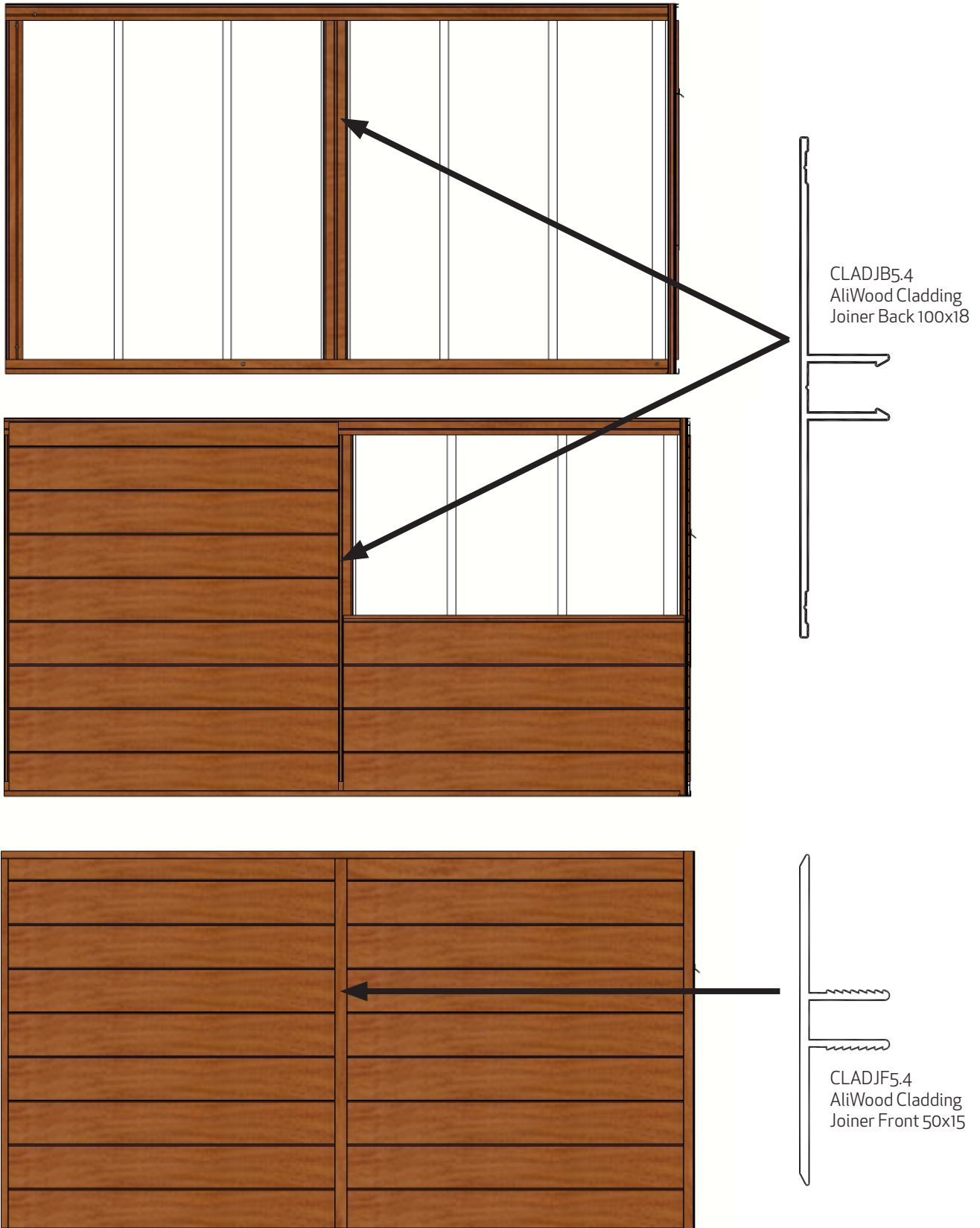


AliWood Cladding can be installed vertically as well as horizontally. These steps apply for both ways of installation.

Installation

Further Information

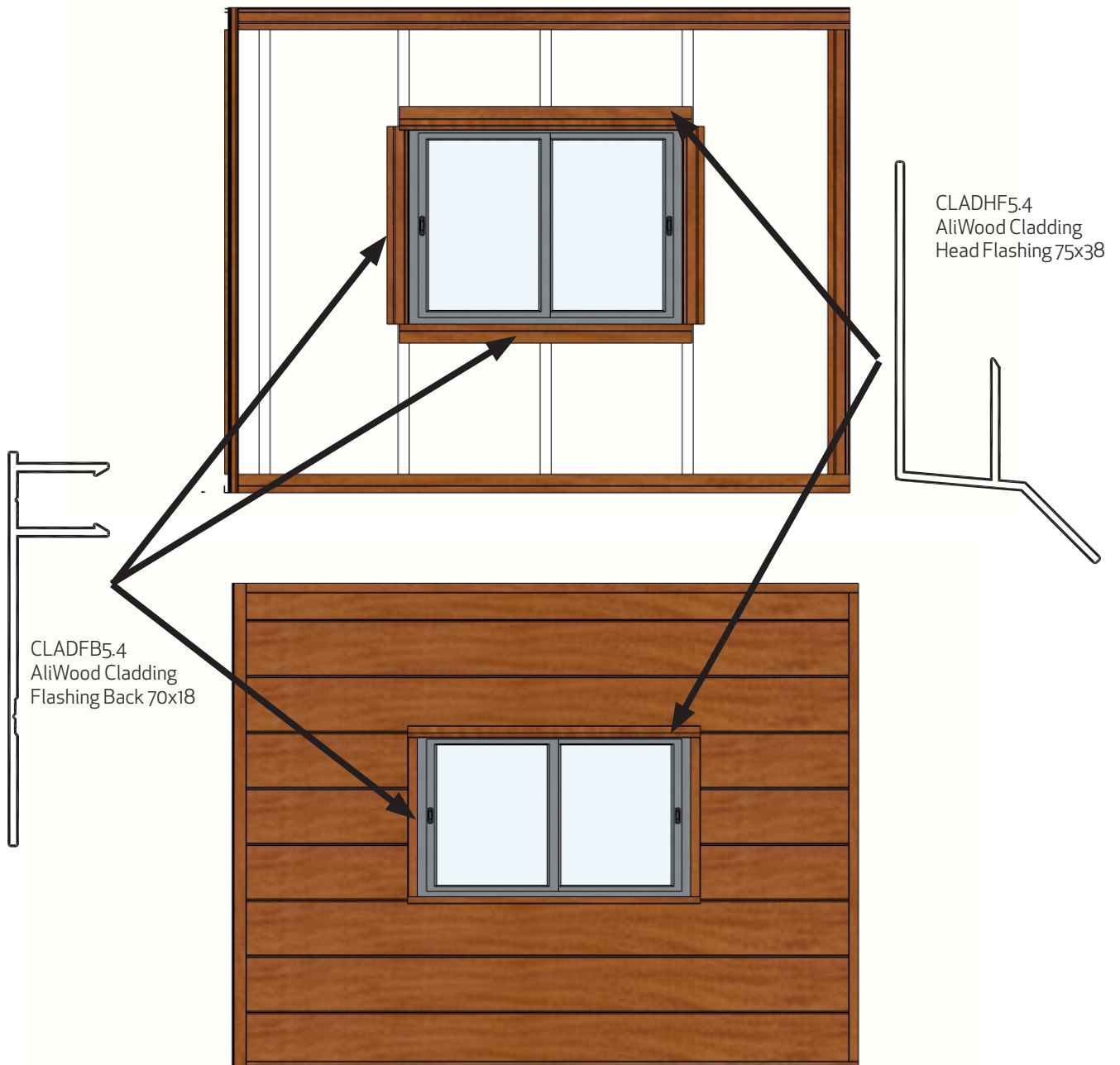
- When using Joiner Front or Back, refer to the following drawings



Installation

Further Information

- When using Flashing Front or Back, refer to the following drawings



Notes

Completed Projects



AliWood[™]
Looks like real wood

+61 3 5831 2574
+61 3 5831 2575

sales@aliwood.com.au
www.aliwood.com.au

445-447 Goulburn Valley Hwy Shepparton VIC 3631
PO Box 6458 Shepparton VIC 3632

ABN 25 613 779 025