

Wharington
*Quality and Service
 for over one hundred years*

SHUTE
to
SHELF™

The **Shute-To-Shelf™** manual handling system is designed solutions to ensure efficient and low impact processing in the Returns areas of libraries. Australian designed and manufactured library equipment for new and refurbished libraries.



chutes.....	02
fixed dumpins.....	06
mobile dumpbins.....	08
rise&fall tables.....	09
trolleys.....	10
colour palette.....	11

Wharington International Pty Ltd

48-50 Hargreaves Street
 Huntingdale 3166 Victoria Australia

T +61 3 9544 5533

F +61 3 9543 1907

E sales@wharington.com.au

www.wharington.com.au

www.shutetosshelf.com.au



**Barcode Scanning
Secure Entry Chute**

STS-RC-XT-SC



Height 450mm
Width 600mm
Depth 390mm

[+ Click here for information](#)

**Exterior
Returns Chute**

STS-RC-XT-EL



Height 450mm
Width 600mm
Depth 390mm

[+ Click here for information](#)

**Interior
Returns Chute**

STS-RC-IN-EL



Height 485mm
Width 595mm
Depth 360mm

[+ Click here for information](#)

**Pivot
Returns Chute**

STS-RC-XT-PV



Height 450mm
Width 600mm
Depth 390mm

[+ Click here for information](#)

**Conveyor
Returns Chute**

STS-RC-CV-EL



Height 315mm
Width 550mm
Depth 560mm

[+ Click here for information](#)

[features](#)

To compare all the features of the Shute-To-Shelf™ Chutes, click the above button. To print a copy of the information, please see the attached file in the Attachment Panel (only visible when NOT in Full Screen mode).

**Basic
Returns Chute**

STS-RC-BA-WL



Height 260mm
Width 595mm
Depth 357mm

[+ Click here for information](#)

Barcode Scanning Secure Entry Chute

STS-RC-XT-SC

450mm High x 390mm Deep x 600mm Wide

Exterior Wall Mounted Barcode Scanning Secure Entry Chute, stainless steel construction throughout, with three colour LED indicators: Open / Closed / Standby. The flap opens only after scanning the barcodes programmed into the reader. Able to be programmed to accept multiple barcode types. Easy to install, with rear fascia and security fixings on front fascia. Compact size that is interchangeable with other models of Shute-To-Shelf™ chutes. This chute has been designed to install into a masonry wall.

Features include:

- Programmed to read the barcodes of the institution.
- Able to add and remove barcodes.
- Connectivity for RFID.
- Connects to Dumpbin to lock when full.
- Battery back-up for power outages.
- Manual locking override.
- Removable roller assembly for sanitation.
- Perforated debris tray removes to the rear.
- Rear Cover to block views and draughts.
- Wayfinding diagrammatic instructions.
- Designed with forward drainage.



[+ Click here for information](#)



©COPYRIGHT WHARINGTON INTERNATIONAL PTY LTD

Exterior Returns Chute

STS-RC-XT-EL
450mm High x 390mm Deep x 600mm Wide

Exterior Wall Mounted Returns chute, stainless steel, LED Open/Closed indicator, electrical locking flap, removable roller assembly for sanitation, perforated debris tray removes to the rear. Forward drainage. Easy to install, with rear fascia and security fixings on front fascia. This chute has been designed to install into a masonry wall.

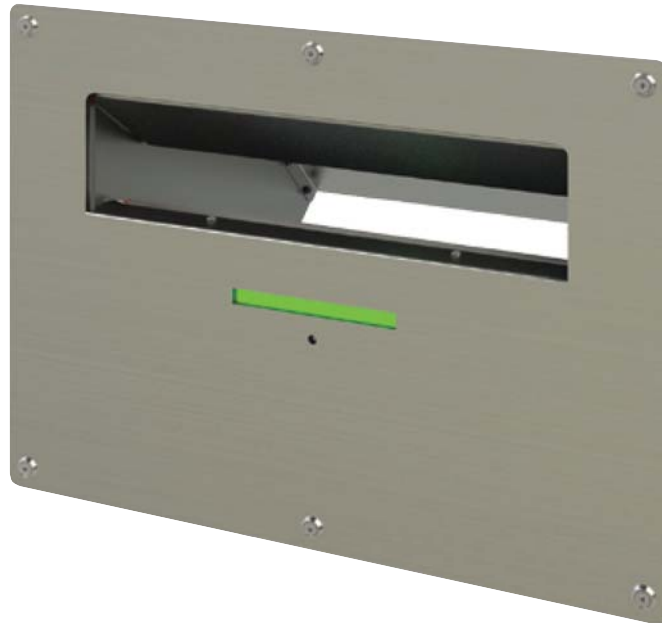
Pivot Returns Chute

STS-RC-XT-PV
450mm High x 390mm Deep x 600mm Wide

Exterior Wall Mounted Pivot Returns chute, stainless steel, LED Open/Closed indicator, electrical locking, easy to access wide handle, rubber edging and dampeners for quiet operation. Large 452mm wide bucket and designed with forward drainage. Easy to install, with rear fascia and security fixings on front fascia. Deflector on Front fascia to prevent rain from entering the chute. Rear cover to restrict views into the library and draughts. This chute has been designed to install into a masonry wall.

Exterior Returns Chute

STS-RC-XT-EL



+ [Click here for information](#)

Pivot Returns Chute

STS-RC-XT-PV



+ [Click here for information](#)

Interior Returns Chute

STS-RC-IN-EL
485mm High x 360mm Deep x 595mm Wide
Interior Wall Mounted Returns chute, stainless steel, LED Open/Closed indicator, electrical locking flap, removable roller assembly for sanitation. Easy to install, with rear fascia and security fixings on front fascia. This chute has been designed to install into a partition wall. Also available as a non-locking Interior Returns Chute STS-RC-IN-WL.

Conveyor Returns Chute

STS-RC-CV-EL
315mm High x 560mm Deep x 550mm Wide
Exterior Wall Mounted Returns Conveyor chute, stainless steel, LED Open/Closed indicator, electrical locking flap, rollers turn gently when books are pushed against the flap. Forward drainage. The narrow body allows for a low installation in the exterior wall to meet 'Design for Access and Mobility' while providing a standing height for operators at the Dumpbin behind the chute. Easy to install, with rear fascia and security fixings on front fascia. This chute has been designed to install into a masonry wall.

Basic Returns Chute

STS-RC-BA-WL
260mm High x 357mm Deep x 595mm Wide
Basic Wall Mounted Returns chute, stainless steel chute with flap and an articulated body for easy installation. Front and rear fascias. This chute has been designed to install into an internal partition wall.

Interior Returns Chute



[+ Click here for information](#)

Conveyor Returns Chute



[+ Click here for information](#)

Basic Returns Chute



[+ Click here for information](#)

© COPYRIGHT WHARINGTON INTERNATIONAL PTY LTD

fixed dumpbins

Fixed Deep Dumpbin

Small STS-DB-FS

900mm High x 700mm Deep x 700mm Wide

Fixed Deep Dumpbin

Medium STS-DB-FM

900mm High x 700mm Deep x 900mm Wide

Fixed Deep Dumpbin

Large STS-DB-FL

900mm High x 700mm Deep x 1,200mm Wide

Fixed Deep Dumpbin

Custom STS-DB-CU

Sized to client specification

The Shute-To-Shelf™ offers a range of Fixed Deep Dumpbins in three sizes: Small, Medium and Large; and also Custom Sizes to client specification.

All Fixed Deep Dumpbins feature paired electrically operated lifting legs that raise and lower the internal carpeted floor of the Dumpbin. The Control button to raise and lower the internal floor is mounted in the stainless steel leg covers on a side selected by the client. The floor of the Dumpbin is able to be raised level with the top of the Dumpbin. The internal floor can be removed using the two finger tabs in the floor of the Dumpbin. The Dumpbin floor has a layer of high density foam under the carpet to reduce the impact of books and AV returns into the Dumpbin. The floor of the Dumpbin falls 600mm from the top of the Dumpbin. The laminated timber panels of the Dumpbin are available in a range of colours with a coated metal base, internal and floor frames to match.



Click here to view
Control Panel

Fixed Deep Dumpbin Large

STS-DB-FL



Fixed Deep Dumpbin Small

STS-DB-FS



Fixed Deep Dumpbin Medium

STS-DB-FM

fixed dumpbins with auto-drop

Auto-Drop floor mechanism

STS-DB-AUTO

Closure connector between the Dumpbin and the Chute

STS-DB-SOC

For busy libraries with a high volume of returns, it is recommended to have the Auto-Drop system in the Fixed Deep Dumpbin. Staff can be released for other library duties until the Dumpbin is full. When the infra-red beam is broken the floor automatically falls a pre-set distance until the floor reaches the bottom of the Dumpbin. The client can nominate an alert when the Dumpbin is full, a beep or flashing light. There are a number of safety features including an Over-ride button that will allow the dropping process to be stopped at any time, removal of the internal floor will stop the dropping mechanism as will a double click on the Control button. The Over-ride button can also be used to bring the floor of the Dumpbin up level with the top of the Dumpbin.

There is the option to connect the Dumpbin with the Auto-Drop mechanism to a Shute-To-Shelf™ Returns Chute, so that when the Dumpbin is full the Chute is locked.

Window for Infrared Beam



Internal floor lowered automatically

Up/Down Control



Internal floor raised manually

Illuminated Manual Override Pushbutton



In Over-ride mode the floor is raised to the top of the Dumpbin

mobile dumpbins and exterior returns cabinet

Medium Mobile Dumpbin

STS-DB-MM

900mm High x 1050mm Long x 800mm Wide

The Medium Mobile Dumpbin includes paired lifting legs that raise and lower the carpeted floor that is powered electrically operated carpeted Rise&Fall floor that is powered by the re-chargeable powerpack in the Dumpbin. Coated metal base and floor frame with laminated timber panels – see page 11 for the range of Laminated Timber Board colours available. The control button is mounted in the front between the stainless steel handles with rubber grip.

The load balances on two large wheels with four smaller guiding wheels for manoeuvrability.

Exterior Returns Cabinet

STS-RC-EB

1460mm High x 1160mm Long x 855mm Wide

The Exterior Returns Cabinet has a lockable Pivot Chute and access door. Baked enamel steel cabinet that is designed to take the Medium Mobile Dumpbin. Angled roof for rainfall deflection. Fixings for the floor frame supplied with the unit. Secure deposit inside and outside the library and for remote collections. Exterior Cabinets are available in a range of Metal Coating colours as shown on page 11.



Medium Mobile Dumpbin
STS-DB-MM



Exterior Returns Cabinet
STS-RC-EB

©COPYRIGHT WHARINGTON INTERNATIONAL PTY LTD

rise&fall tables

Freestanding Rise&Fall Table

STS-AT-FS

Range 700 – 1000mm High x client specification

The custom manufactured Freestanding Table incorporates a Rise&Fall mechanism, a coated metal frame, laminated timber board worksurface. The control button is mounted to the tabletop. Cut-outs for scanning equipment, shelving for computers, keyboard slides, screen holders, data cable management and holes are provided according to client specification.

Mobile Rise&Fall Table

STS-AT-MB

Range 700 – 1000mm High x client specification

The custom manufactured Mobile Table incorporates a Rise&Fall mechanism, a coated metal frame, laminated timber board worksurface. The control button is mounted to the tabletop. Cut-outs for scanning equipment, shelving for computers, keyboard slides, screen holders, data cable management and holes are provided according to client specification. The power pole attached to the Mobile Table carries the data and power festooned from a track mounted on the ceiling to the scanning and computer systems on the table.

Motorised Rise&Fall Table

STS-AT-MT

Range 700 – 1000mm High x client specification

The custom manufactured Motorised Mobile Rise&Fall Table has the same features as the Mobile Rise&Fall Table with the added feature of having a drive unit to move the table forwards and backwards to service the Fixed Deep Dumpbins alongside the Motorised Rise&Fall Table.



Mobile Rise&Fall Table
STS-AT-MB



Freestanding Rise&Fall Table with Shelf STS-AT-FS



Freestanding Rise&Fall Table
STS-AT-FS

©COPYRIGHT WHARINGTON INTERNATIONAL PTY LTD

trolleys

Zip Trolley STS-TR-ZI

1000mm High x 550mm Deep x 370mm Wide

The Zip Trolley is a featherweight powder coated aluminium frame for speedy shelving, end of aisle display, patron use or use in a workroom.

Fat Zip Trolley STS-TR-FZ

1000mm High x 550mm Deep x 490mm Wide

The Fat Zip Trolley combines the lightweight features of the aluminium framed Zip Trolley with additional width to accommodate plastic crates.

Speedie Trolley STS-TR-SP

965mm High x 555mm Deep x 425mm Wide

The Speedie Trolley is a lightweight trolley designed to carry safely a plastic crate and to fit under benches.

All Trolleys are available in the following standard colours: Beige, Black, Charcoal, Chocolate, Grey and White. Custom colours available, a surcharge applies.



Zip Trolley
STS-TR-ZI



Fat Zip Trolley
STS-TR-FZ



Speedie Trolley
STS-TR-SP

colour palette

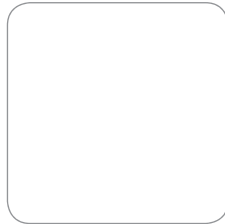
Colour Palette

Colours currently shown may change without notice. Please check with Wharington before placing an order.

Special colours are available for both the Laminated Timber Board and the Metal Coatings. A surcharge may apply.

Due to differences in computer monitor quality, colours shown may vary slightly from the actual product. Colours and finishes in this colour chart are represented as close as printing and screen processes allow.

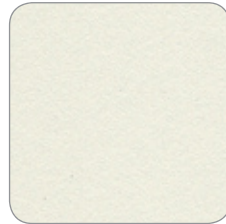
Laminated Timber Board



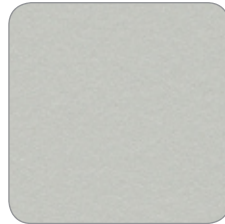
White



Parchment



Moleskin



Paper Bark



Oyster Grey



Dansk Maple



Young Beech



Select Beech



Stipple Seal



Espresso



Fossil



Red Cherry



Charcoal

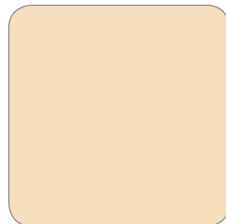


Black

Metal Coatings



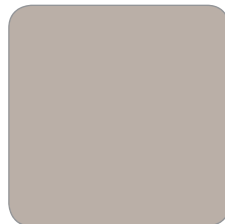
White



Beige



Chocolate



Grey



Charcoal



Black