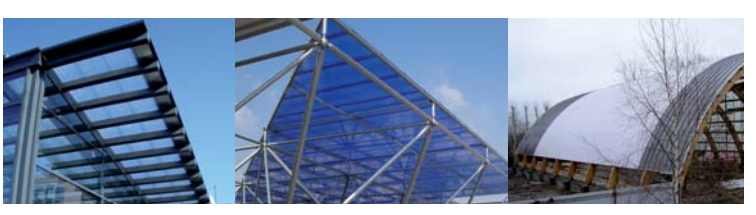
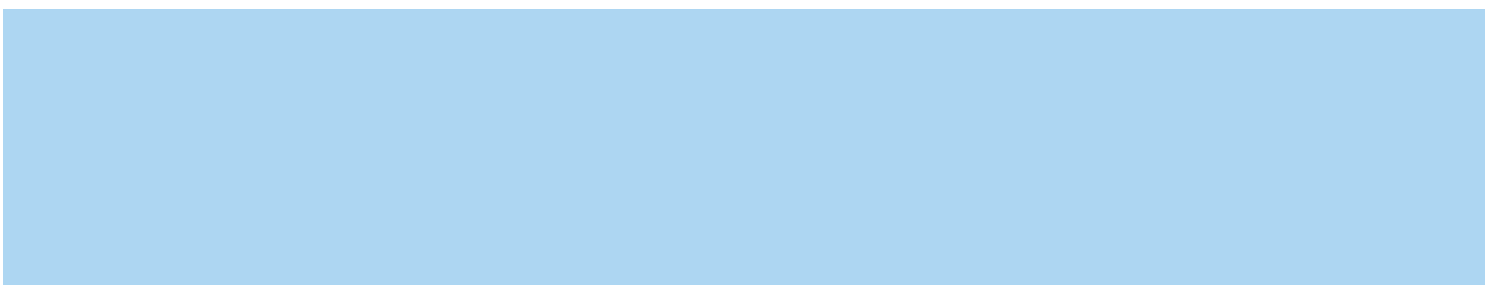
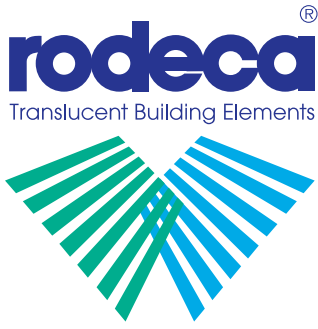


 **Multi Function Panels**  
Multi-Funktions-Paneele



Multi Function Panels



# Multi Function Panels

 Multi Wall Sheets  
Hohlkammerscheiben

 Translucent Building Elements  
Lichtbauelemente

## Multi Function Panels

### Advantages

- quick and easy installation
- translucent
- heat insulating
- high temperature resistance
- versatile designing in shape, colour and function
- good long term performance through UV protection
- 200 times tougher than glass
- shatter proof

### Applications

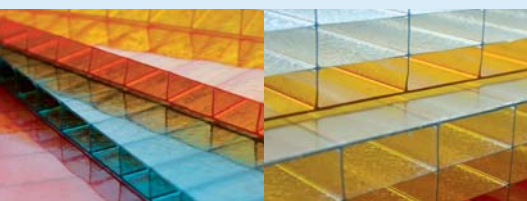
- Roofing construction
- Sports and industrial halls
- Canopies
- Roof lights - flat and curved
- Pyramids
- Natural smoke and heat exhaust
- Carports
- Patio coverings
- Wall and roof refurbishments

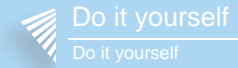
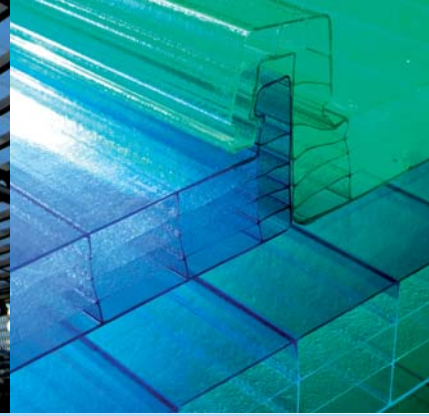
### General information Multi Function Panels

Rodeca Multi Function Panels are suitable for translucent roofing applications for internal and external spaces, for both flat and curved applications. Light weight, high insulation and high impact properties provide an extremely weather resistant roofing solution. The absence of glazing bars and minimal use of alloy components creates an almost seam free, economical interior finish.

### List of content









Overview Multi Function Panels	page 2
System PC 2610-4	page 3
System PC 2625-5	page 4
System PC 2253-2	page 5
System PC 2250-10-4	page 6





## Overview Multi Function Panels

Rodeca Multi Function Panels are the ideal solution to introduce natural daylight into large or small interior/exterior covered spaces. These systems provide flexible solutions for roofing and canopies of various sizes and shape. Combined with its light weight, high thermal properties, impact resistance and ease of installation they are an economical daylight solution.

 <p>PC 2610-4</p>	 <p>pitched system &gt; 5°</p>	<p>Span width 0.80m*</p>
 <p>PC 2625-5</p>	 <p>pitched system &gt; 5°</p>	<p>Span width 1.00m*</p>
 <p>PC 2253-2</p>	 <p>pitched system &gt; 5°</p>	<p>Span width 0.60m*</p>
 <p>PC 2250-10-4</p>	 <p>pitched system &gt; 5°</p>	<p>Span width 0.80m*</p>

\* Recommended span width for load pressure of 1.00kN/m<sup>2</sup>.

### Multi Function Panels - curved application

Multi Function Panels can be cold-curved over an appropriate substructure. The minimum radius depends on the panel thickness.



2610-4	minimum radius 3.00m
2625-5	minimum radius 8.00m
2253-2	minimum radius 2.00m
2250-10-4	minimum radius 3.00m

## Polycarbonate panels



### PC 2610-4

Colours  
Standard: crystal / opal  
Color version: from 400 m<sup>2</sup>  
Decocolor version: from 400 m<sup>2</sup>

Thickness (mm)	10
Building width (mm)	600 (+1/-1%)
Weight (kg/m <sup>2</sup> )	2.60



### PC 2625-5

Colours  
Standard: crystal / opal  
Color version: from 400 m<sup>2</sup>  
Decocolor version: from 400 m<sup>2</sup>

Thickness (mm)	25
Building width (mm)	600 (+1/-1%)
Weight (kg/m <sup>2</sup> )	3.60



### PC 2253-2

Colour  
Standard: crystal / silver  
Color version: from 150 m<sup>2</sup>

Thickness (mm)	3
Building width (mm)	250 (+1/-1%)
Weight (kg/m <sup>2</sup> )	1.70



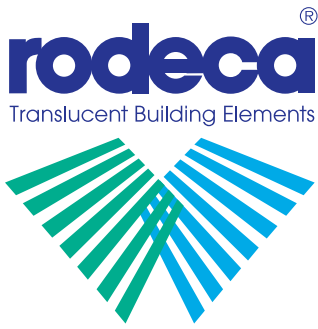
### PC 2250-10-4

Colours  
Standard: crystal / opal  
Color version: from 300 m<sup>2</sup>

Thickness (mm)	10
Building width (mm)	250 (+1/-1%)
Weight (kg/m <sup>2</sup> )	2.20

All installation advice, application requirements and further technical information can be viewed in our technical manuals and installation guides.

RODECA GmbH  
Freiherr-vom-Stein-Straße 165  
D-45473 Mülheim an der Ruhr  
Fon +49 (0) 208 76502-0 | Fax +49 (0) 208 76502-11  
info@rodeca.de | [www.rodeca.de](http://www.rodeca.de)



# Multi Function Panels

Multi Wall Sheets  
Hohlkammerscheiben

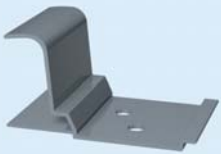
Translucent Building Elements  
Lichtbauelemente

## Multi Function Panels

### Multi Function Panel PC 2610-4

The Multi Function Panel PC 2610-4 is a 10mm thick panel with 4 layers and a building width of 600mm.

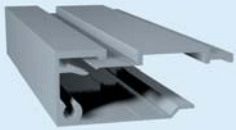
### Accessories



Fastener  
Item no.: 494010



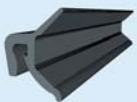
Polycarbonate end cap  
Item no.: 395005



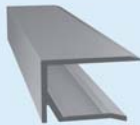
End profile  
Item no.: 461040  
with clamp batten  
Item no.: 492001



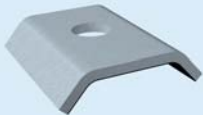
Cover plate for 461040  
Item no.: 465010



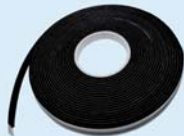
Gasket for 461040  
Item no.: 902901



Drip profile  
Item no.: 461011



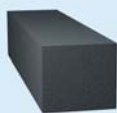
Retention washer  
Item no.: 494002



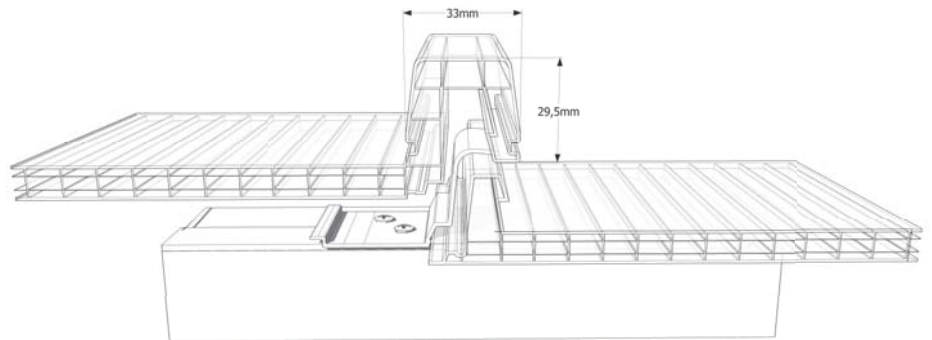
Sealing band 30\*5  
Item no.: 9019020005



Wall connection profile  
Item no.: 470400 with gasket  
Item no.: 902106

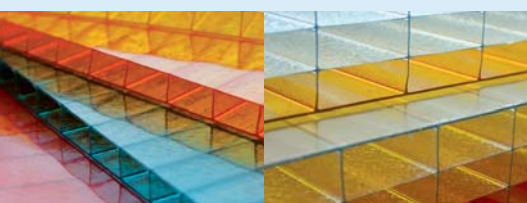


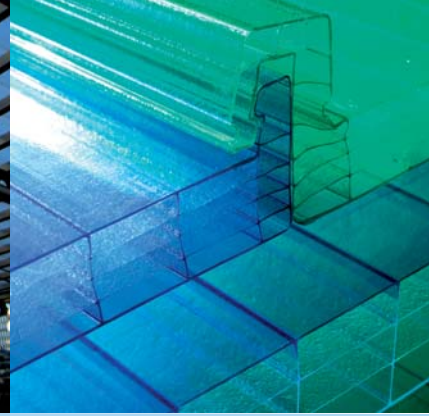
Filling piece  
Item no.: 59803425565



PC 2610-4

Thickness (mm)	10
Building width (mm)	600 (+1/-1%)
Weight (kg/m <sup>2</sup> )	2.60





 RT-Thermolight  
RT-Thermolight

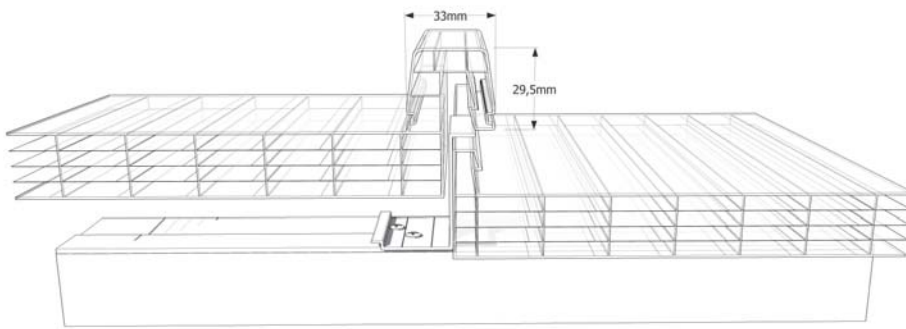
 U-Panels  
U-Paneele

 Windows  
Fenster

 Do it yourself  
Do it yourself

## Multi Function Panel PC 2625-5

The Multi Function Panel PC 2625-5 is a 25mm thick panel with 5 layers and a building width of 600mm.



### PC 2625-5

Thickness (mm)	25
Building width (mm)	600 (+1/-1%)
Weight (kg/m <sup>2</sup> )	3.60

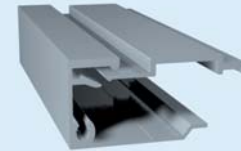
## Accessories



Fastener  
Item no.: 494025



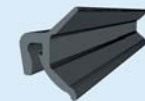
Polycarbonate end cap  
Item no.: 395004



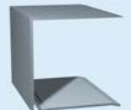
End profile  
Item no.: 462540 with  
Clamp batten  
Item no.: 492001



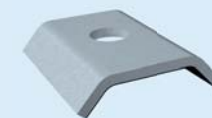
Cover plate for 462540  
Item no.: 465025



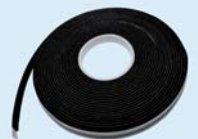
Gasket for 462540  
Item no.: 902901



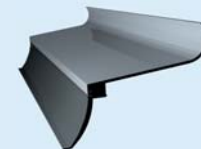
Drip profile  
Item no.: 462511



Retention washer  
Item no.: 494002



Sealing band 30\*5  
Item no.: 9019020005

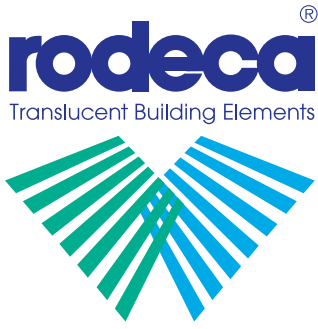


Wall connection profile  
Item no.: 470400 with gasket  
Item no.: 902106



Filling piece  
Item no.: 59803425565

RODECA GmbH  
Freiherr-vom-Stein-Straße 165  
D-45473 Mülheim an der Ruhr  
Fon +49 (0) 208 76502-0 | Fax +49 (0) 208 76502-11  
info@rodeca.de | [www.rodeca.de](http://www.rodeca.de)



# Multi Function Panels

Multi Wall Sheets  
Hohlkammerscheiben

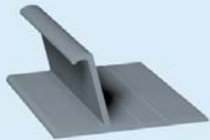
Translucent Building Elements  
Lichtbauelemente

## Multi Function Panels

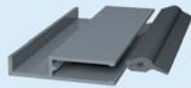
### Multi Function Panel PC 2253-2

The Multi Function Panel PC 2253-2 is a 3mm thick panel with two layers and a building width of 250mm.

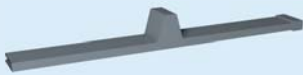
### Accessories



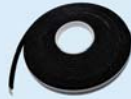
Fastener  
Item no.: 494003



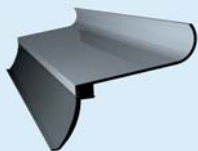
Lateral end profile  
Item no.: 500664 with gasket  
Item no.: 902110



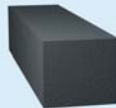
Polycarbonate end cap in  
colour silver Item no.: 395001



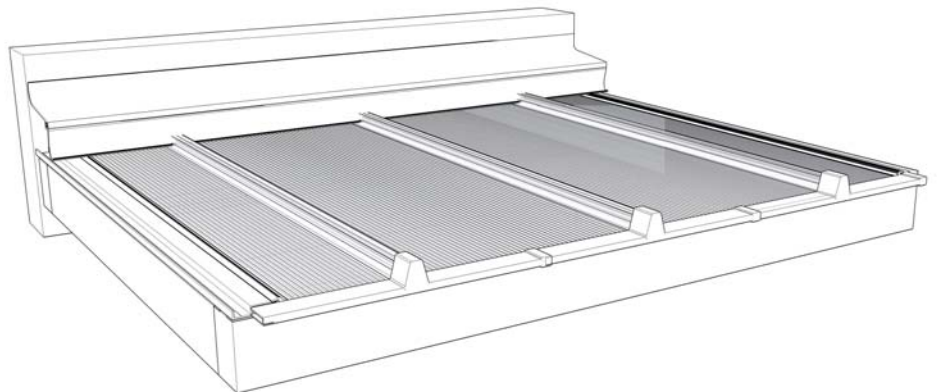
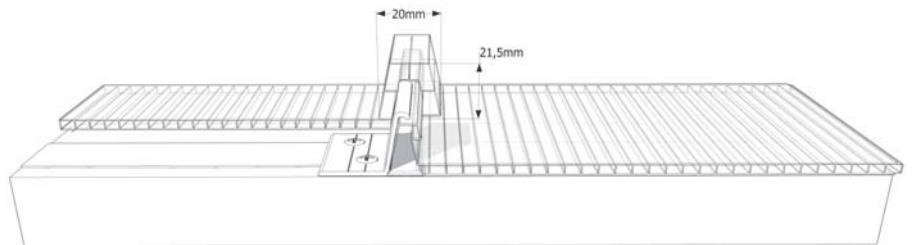
Sealing band 20\*4  
Item no.: 9019020004



Wall connection profile  
Item no.: 470400 with gasket  
Item no.: 902106



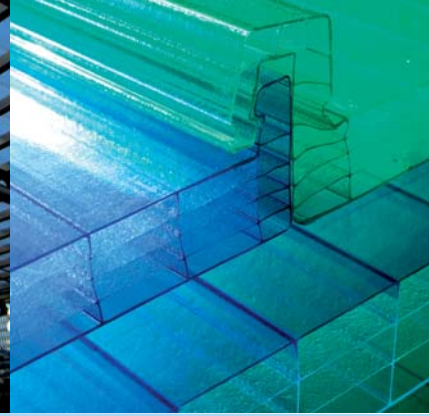
Filling piece  
Item no.: 59803425565



#### PC 2253-2

Thickness (mm)	3
Building width (mm)	250 (+1/-1%)
Weight (kg/m <sup>2</sup> )	1.70





RT-Thermolight  
RT-Thermolight

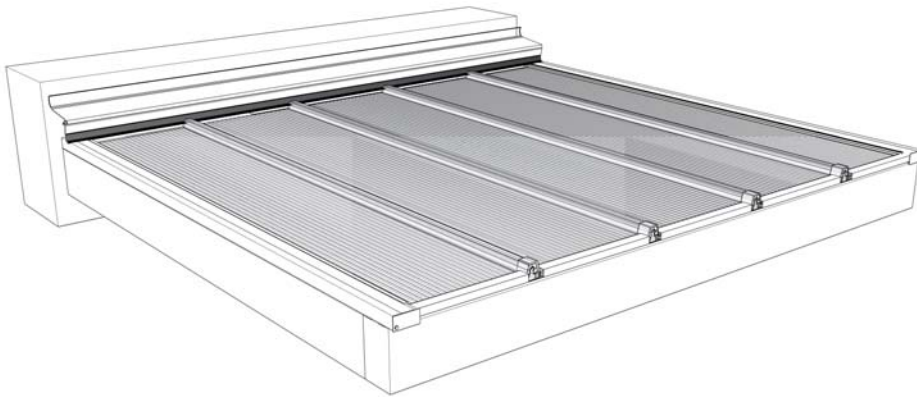
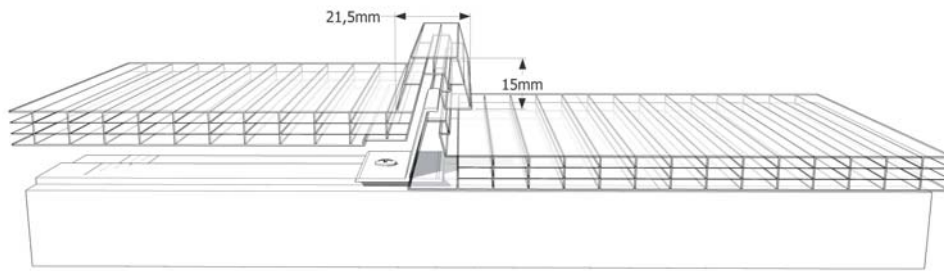
U-Panels  
U-Paneele

Windows  
Fenster

Do it yourself  
Do it yourself

## Multi Function Panel PC 2250-10-4

The Multi Function Panel PC 2250-10-4 is a 10mm thick panel with 4 layers and a building width of 250mm.

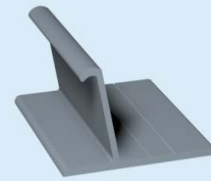


PC 2250-10-4

Thickness (mm)	10
Building width (mm)	250 (+1/-1%)
Weight (kg/m <sup>2</sup> )	2.20



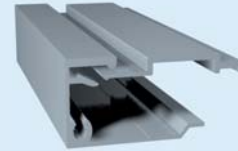
## Accessories



Fastener  
Item no.: 494004



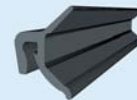
Polycarbonate end cap  
Item no.: 395006



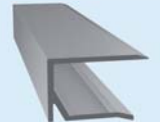
Lateral end profile  
Item no.: 461040 with clamp  
batten Item no.: 492001



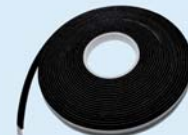
Cover plate for 461040  
Item no.: 465010



Gasket for 461040  
Item no.: 902901



Drip profile  
Item no.: 461011



Sealing band 30\*5  
Item no.: 9019020005



Filling piece  
Item no.: 59803535500



Wall connection profile  
Item no.: 470400 with gasket  
Item no.: 902106

RODECA GmbH  
Freiherr-vom-Stein-Straße 165  
D-45473 Mülheim an der Ruhr  
Fon +49 (0) 208 76502-0 | Fax +49 (0) 208 76502-11  
info@rodeca.de | [www.rodeca.de](http://www.rodeca.de)



## Germany

RODECA GmbH  
Freiherr-vom-Stein-Straße 165  
D-45473 Mülheim an der Ruhr  
Fon +49 (0) 208 76502-0  
Fax +49 (0) 208 76502-11  
info@rodeca.de  
[www.rodeca.de](http://www.rodeca.de)

## United Kingdom

RODECA Ltd.  
Bentalls House  
Bentalls  
Pipps Hill Industrial Estate  
Basildon  
Essex SS14 3BS  
Fon + 44 (0) 1268 531466  
Fax + 44 (0) 1268 526351  
sales@rodeca.co.uk  
[www.rodeca.co.uk](http://www.rodeca.co.uk)

## Italy

ANSA Termoplastici S.r.l./RODECA Italy  
Concessionaria per l'Italia di RODECA GmbH  
Via Nazionale, 66  
24060 Sovere (BG)  
Fon +39 035 981431  
Fax +39 035 982714  
info@rodeca.it  
[www.rodeca.it](http://www.rodeca.it)

## The Netherlands

RODECA Systems b.v.  
Koperweg 11 N  
2401 LH Alphen aan den Rijn  
Fon +31 (0) 172 416 747  
Fax +31 (0) 172 419 090  
info@rodeca.nl  
[www.rodeca.nl](http://www.rodeca.nl)

## Belgium and Luxembourg

RODECA Systems BELUX bvba  
Wupstraat 37  
2812 Muizen/Mechelen  
Mobile +32 (0) 468 137 677  
Fax (NL) +31 (0) 172 419 090 (RODECA Systems b.v.)  
info@rodeca.be  
[www.rodeca.be](http://www.rodeca.be)

## South America

REPLAEX RESINAS PLÁSTICAS EXTRUDADAS LTDA  
Autorizado America do Sul de RODECA GmbH  
Estrada da Ligação, 839 - Taquara - Rio de Janeiro  
RJ - BRASIL  
cep. 22713-470  
Fon : +55 (0) 21 2446-8811  
Fax : +55 (0) 21 2446-7181  
info@rodeca.com.br  
[www.rodeca.com.br](http://www.rodeca.com.br)  
[www.replaex.com.br](http://www.replaex.com.br)

## The RODECA product groups overview / Die RODECA Produktgruppen im Überblick:



### Translucent Building Elements

Lichtbauelemente



### Multi Wall Sheets

Hohlkammerscheiben



### Multi Function Panels

Multi-Funktions-Paneele



### U-Panels

U-Paneele



### RT-Thermolight

RT-Thermolight



### Windows

Fenster



### Do it yourself

Do it yourself