

LED Outdoor Lights



IN WALL OUTDOOR LED LIGHTS

Introducing the new generation in outdoor lighting. Tec-Led's recessed LED waterproof in-wall lights provide soft yet effective spot lighting to outdoor areas such as pathways, patios, walkways and driveways. Available in either circular or square fitting, these lights are easily retro fitted to existing structures, drawing economical power.

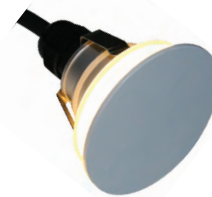
SPECIFICATIONS



(Also available in silver finish)



(Also available in white finish)



Code	LOWLR3WWW	LOWLS3WWW	LOWLT1WWW	LOWLH3WWW
Description	Circular recessed outdoor light	Square recessed outdoor light	Circular small recessed outdoor light	Circular Halo recessed outdoor light
Power	3W	3W	1W	3W
Lumens	67	67	51	40
Material	6063 aluminium	6063 aluminium	316 Stainless steel	Aluminium
Dimensions (H x W x D)	75mm Ø x 70mm	75mm x 75mm x 70mm	20mm Ø x 54mm	60mm Ø x 35mm
Hole size mm	67mm Ø	67mm Ø	26mm Ø	35mm Ø
Rating	IP65	IP65	IP66	IP67
Input	DC700mA	DC700mA	DC350mA	DC350mA
Service life	40,000 hours	40,000 hours	40,000 hours	40,000 hours
Colour temperature	Warm white 3000K	Warm white 3000K	Warm white 3000K	Warm white 3000K
Beam angle	40°	40°	45°	360°
Chip	CREE XPE	CREE XPE	CREE XPE	CREE XPE

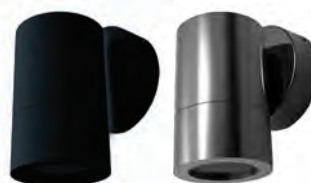
ON WALL OUTDOOR LED LIGHTS

Tec-Led Lighting's extensive range of on-wall lights provide outdoor lighting solutions whilst being an energy efficient outdoor lighting option. These decorative and functional light fittings are designed to give illumination to outdoor areas such as walls and exterior features of housing spaces.

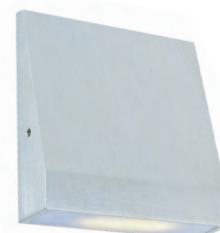
SPECIFICATIONS



Aluminium Stainless steel SS316



Aluminium Stainless steel SS316



Code	LOWLUD2x6WWW/DL	LOWLD2x6WWW/DL	LOWLW1WWW
Description	Tubular surface mounted outdoor light	Tubular surface mounted outdoor light	Vertical square surface mounted outdoor light
Power	2 x 6W	6W	1.2W
Lumens	760	380	70
Material	Aluminium or Stainless Steel 316	Aluminium or Stainless Steel 316	Aluminium
Dimensions	208mm x 90mm	109mm x 83.5mm	80mm x 75mm x 19mm
Rating	IP65	IP65	IP54
Input	240VAC	240VAC	DC350mA
Service life	30,000 hours	30,000 hours	30,000 hours
Colour temperature	2700K/600K	2700K/600K	3000K
Beam angle	60°	60°	120°
Chip	EPISTAR	EPISTAR	OSRAM

IN GROUND OUTDOOR LED LIGHTS

Tec-Led Lighting's vast range of LED in-ground lights all utilise 24v low energy technology, enabling them to offer a greatly enhanced lamp life and power saving whilst meeting all outdoor lighting requirements. The sleek and attractive aluminium or stainless steel housings guarantee a fitting with efficient heat dissipation and corrosion resistance properties. These lights are perfect to highlight any outdoor features, both residential and commercial, worth shining a light on!

SPECIFICATIONS



Code	LIG5WWW/DL24V	LIGR4WWW/DL	LIGRS9WWW/DL	LIGRL9WWW/DL	LIGSQ9WWW/DL
Description	Circular recessed in ground outdoor LED light	Circular recessed in ground outdoor LED light	Circular recessed in ground outdoor LED light	Circular recessed in ground outdoor LED light	Square recessed adjustable in ground outdoor LED light
Power	5W	4W	9W	9W	9W
Lumens	Warm White = 160 Daylight = 200	168/200	350 / 400	Warm White = 724 Daylight = 850	330 / 380
Material	316 Stainless steel	Alumin. or 316 S/steel	316 Stainless steel	316 Stainless steel	316 Stainless steel
Dimensions (H x W x D)	48mm diam. x 86mm	65mm Ø x 145mm	90mm Ø x 107mm	186mm Ø. x 98mm	130mm x 130mm x 130mm
Hole size mm	44mm Ø	62mm Ø	83mm Ø	195mm Ø	116mm x 116mm
Rating	IP67	IP67	IP68	IP67	IP67
Input	24VDC	24VDC	24VDC	24VDC	24VDC
Service life	40,000 hours	40,000 hours	40,000 hours	40,000 hours	40,000 hours
Colour temp.	2700K - 4500K	3000K - 5500K	3000K - 5500K	3000K - 5500K	3000K - 5500K
Beam angle	15°, 30°	25°, 40°, 60°	15°, 30°, 40°, 60°	15°, 30°	15°, 40°, 60°
Chip	EPISTAR	CREE	CREE	CREE	CREE

ON WALL OUTDOOR LED LIGHTS

Tec-Led Lighting's extensive range of on-wall lights provide outdoor lighting solutions whilst being an energy efficient outdoor lighting option. These decorative and functional light fittings are designed to give illumination to outdoor areas such as walls and exterior features of housing spaces.



Code	LOWLBLOCH6WWW/LOWLBLOCH2x6WWW	LOWLEUD2X6WWW	LOWLB2WWW
Description	Bloch wall light	Elijah Up/Down wall light	Round directional surface mounted outdoor light
Power	6W / 2 x 6W	2 x 6W	2.2W
Lumens	350 / 700	700	70
Material	Architectural grade brushed aluminium	Die cast Aluminium	Aluminium
Dimensions	117mm/230mm x 65mm x 93	193mm x 93mm x 63mm	68mm Ø x 26.8mm
Rating	IP54	IP54	IP54
Input	240V	240V	DC700mA
Service life	30,000 hours	30,000 hours	30,000 hours
Colour temperature	3000K	3000K	3000K
Beam angle	60°	60°	120°
Chip	EPISTAR	EPISTAR	CREE

ABOVE GROUND OUTDOOR LED LIGHTS

Our diverse range of LED above-ground lights offer power saving and a significantly enhanced service life. The stainless steel or aluminium housings ensure a fitting with corrosion resistant properties and efficient heat dissipation, whilst catering to all outdoor requirements. These above-ground lights are the perfect solution for framing outdoor features and transforming outdoor spaces.

SPECIFICATIONS



(Also available in silver)

Code	LOSL3WWWDL24V	LISL9WWWDL24V	LASLSS6WWW/DL	LASLLS6WWW/DL	LASLSB6WWW/DL	LASLLB6WWW/DL
Description	3W Spotlight	9W Spotlight	6W Spotlight	6W Spotlight	6W Spotlight	6W Spotlight
Power	1 x 3W	3 x 3W	6W	6W	6W	6W
Lumens	Warm White = 50 Daylight = 60	Warm White = 400 Daylight = 425	Warm White = 310 Daylight = 370	Warm White = 310 Daylight = 370	Warm White = 310 Daylight = 370	Warm White = 310 Daylight = 370
Material	Aluminium	Aluminium	Stainless steel	Stainless steel	Aluminium	Aluminium
Dimensions (H x W x D)	42mm Ø x 85mm x 60mm	83mm Ø x 126mm x 300mm stalk	76mm x 62mm Ø x 290mm stalk	76mm x 62mm Ø x 486mm stalk	76mm x 62mm Ø x 290mm stalk	76mm x 62mm Ø x 486mm stalk
Rating	IP65	IP65	IP67	IP67	IP67	IP67
Input	24VDC	24VDC	12VDC	12VDC	12VDC	12VDC
Service life	40,000 hours	40,000 hours	30,000 hours	30,000 hours	30,000 hours	30,000 hours
Colour temp.	Warm white: 2700K, Day Light: 5500K	Warm white: 2700K, Day Light: 5500K	Warm white: 3000K, Day Light: 5500K	Warm white: 3000K, Day Light: 5500K	Warm white: 3000K, Day Light: 5500K	Warm white: 3000K, Day Light: 5500K
Beam angle	40°	60°	60°	60°	60°	60°
Chip	CREE	CREE	EPISTAR	EPISTAR	EPISTAR	EPISTAR

LED OUTDOOR STRIP LIGHTING

Waterproof Flat Flex on Aluminium Bar

Flat Flex LED represents a versatile, energy saving and aesthetically successful lighting option in a myriad of applications for the professional commercial lighting specifier. It can be installed in the smallest of openings and yet still provide a range of tonal values to suit all ambiances. Any of our wide range of LED strip lighting can be converted into an outdoor IP65 rated fitting. The waterproof Flat Flex is perfect for outdoor stair lighting, highlighting water features and can even be used to frame pools. For further specifications regarding these LEDs please see our Flat Flex brochure.



24V Snake Light

Providing a continuous glow with invisible light points and high brightness and especially suited for architectural illumination, both indoors and out. LEDs are encased in a robust PVC sheath, able to withstand foot traffic and the elements.



SPECIFICATIONS - Snake Light

Code	LSNKL2700-6500RGB
LED Type	SMD 5050 tri-chip
Material	PVC
Working Voltage	DC24V
Rated power/m	12W
Lumens per metre	(Warm white) 330
Distance between LEDs	1.67cm
Minimum cutting length	100mm
Maximum connection	10m
IP Rating:*	IP68
Transverse minimum bending diameter	12cm
Accessories	Front connector, Middle connector End cap Aluminium U- channel

www.tec-ledlighting.com.au



TEC-led lighting Pty Ltd

Unit 9 / 7-9 Kent Road, Mascot NSW 2020

Telephone: (02) 9317 4177 Facsimile: (02) 9317 3544

Email: sales@tec-ledlighting.com.au