

curtains  
workwell

Flexible spaces for open places

ACOUSTIC  
BLINDS AND CURTAINS



## SPECIFICATIONS

Reimagine your office space with WorkWell. WorkWell Curtains are a flexible, modern and stylish way to instantly partition work and learning spaces to create quiet zones in otherwise noisy environments.

WorkWell Curtains can be drawn across office and learning spaces to simultaneously reduce noise and improve internal acoustics. The flexibility offered by WorkWell Curtains means spaces can be transformed, opening up new ways to work and learn.



3 Year  
Warranty



Noise  
Reduction



Sound  
Absorption

### Composition

Face Fabric varies  
Acoustic Interlining 100%  
Polyester carrier fabric coated  
with a mass loaded vinyl (flexible  
visco-elastic membrane and  
patented constrained layer  
membrane, combined with  
vibration damping material)

### Weight

Face Fabric varies  
Acoustic Interlining 1500gsm  
Total: ~2000gsm

### Width

Face Fabric varies  
Acoustic Interlining 1300mm

### Fire rating

Face Fabric varies AS 1530.2  
Acoustic Interlining AS 1530.2

### Care instructions

Gently vacuum regularly with  
appropriate attachment. Remove  
hooks or pendants before cleaning.  
Wash below 30 degrees. Do not  
tumble dry. Iron at low  
temperature. Dry clean, any solvent  
except trichloroethylene, delicate.  
Bleach cleanable.  
(excluding Acoustic Interlining)

See [technical specifications](#) for more information



## ACOUSTIC PERFORMANCE

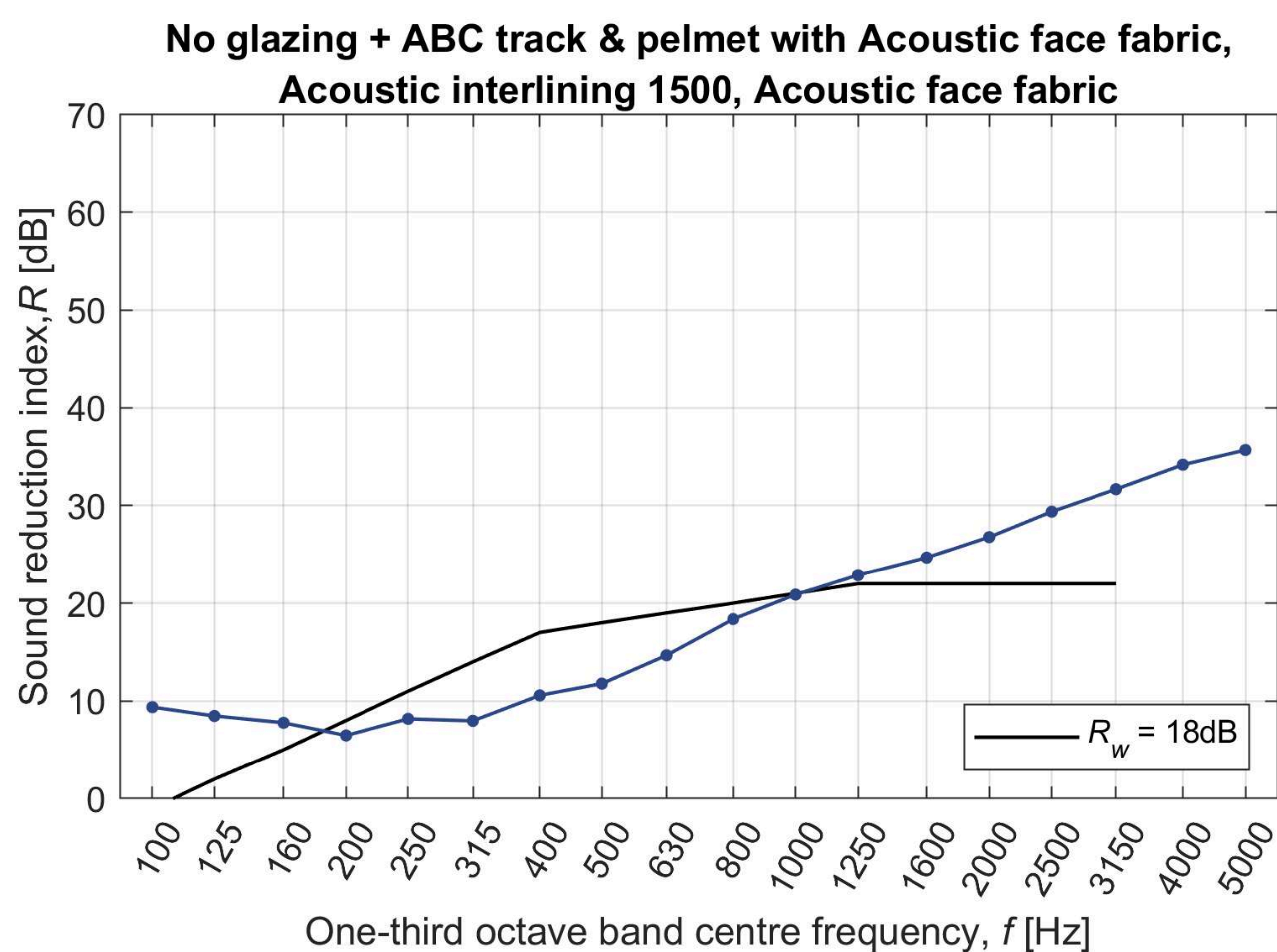
We have conducted extensive testing at The University of Adelaide transmission loss suites for four glazing conditions - no glass, 4mm glass, 6.38mm glass and 10.38mm glass.

The weighted sound reduction index ( $R_w$ ) is a single number rating of the noise insulation in decibels

The noise reduction coefficient (NRC) is the average sound absorption (from 0-1)

The weighted level difference ( $D_w$ ) is a single number rating of the total noise reduction in decibels (noise insulation + sound absorption)

All measurements have been conducted in accordance with international standards (Sound reduction index,  $R$ , in accordance with ISO 10140-2 and Sound absorption coefficient,  $\alpha$ , in accordance with ISO 354).



### WorkWell Curtain

Weighted sound reduction index ( $R_w$ ) = 18dB

Noise reduction coefficient (NRC) = 0.55

Weighted level difference ( $D_w$ ) = 19dB

**Acoustic Blinds and Curtains reduce the noise by more than half.\***

Contact us for a copy of this report.

\*Perceived noise reduction.



## DESIGN YOUR WORKWELL CURTAIN

The WorkWell Curtain is a 3 layered curtain - with the Acoustic Interlining between two layers of your choice of designer Face Fabric, installed on our custom curtain track system. Note that all 3 layers are connected to the same track and joined at the sides so that they operate together as a single curtain.

### Choose a Face Fabric from our Essentials and Select Ranges

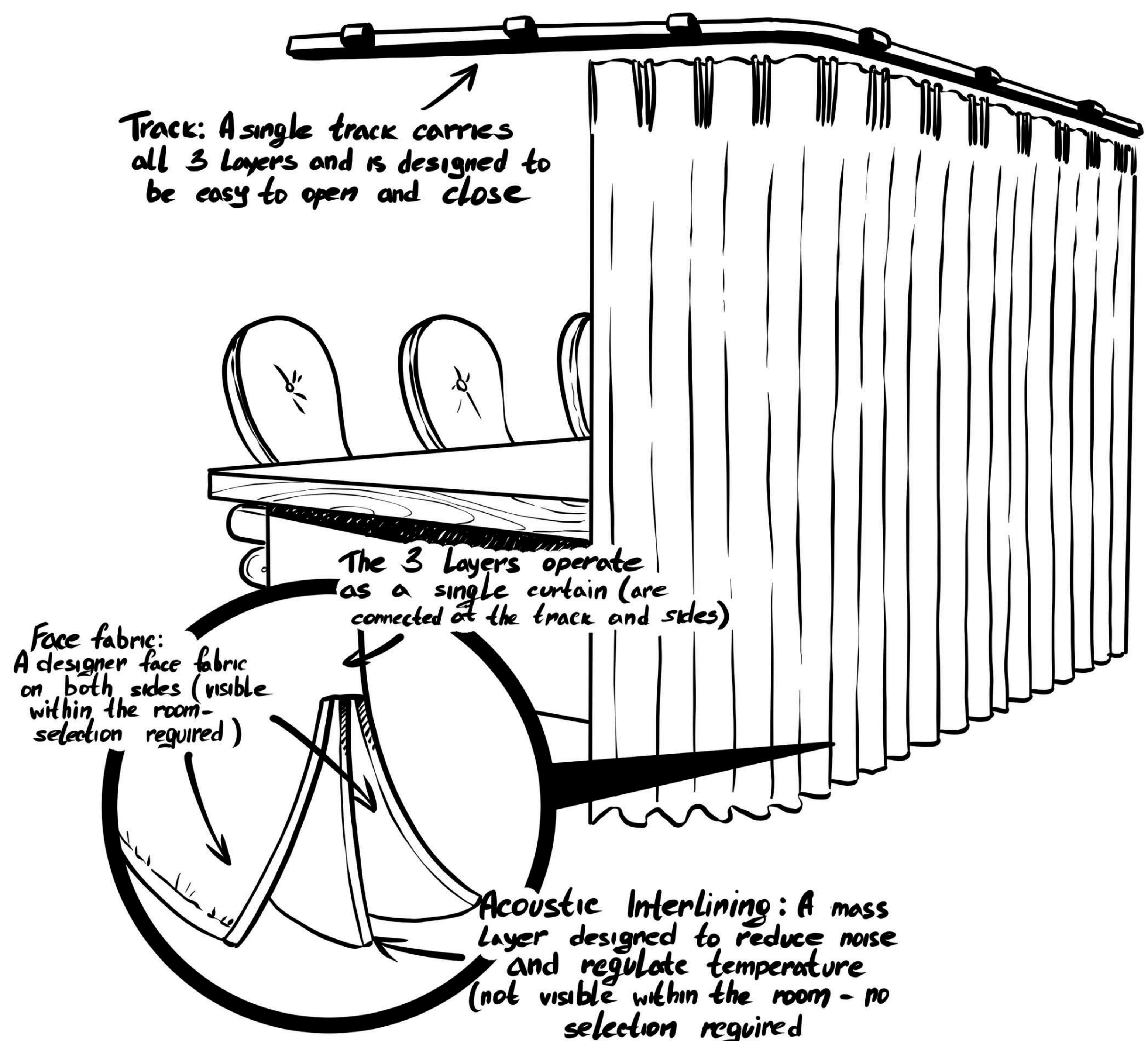
You only need to choose a Face Fabric - this is what you will see on both sides (the Acoustic Interlining is the same for all curtains and is not visible).

#### Essentials

The Essentials range offers simple, versatile, and affordable fabrics. Ideal for everyday use, these fabrics are perfect for most projects, providing great value without compromising quality.

#### Select

The Select range features a range of more premium fabrics. These fabrics are ideal for luxury designs.





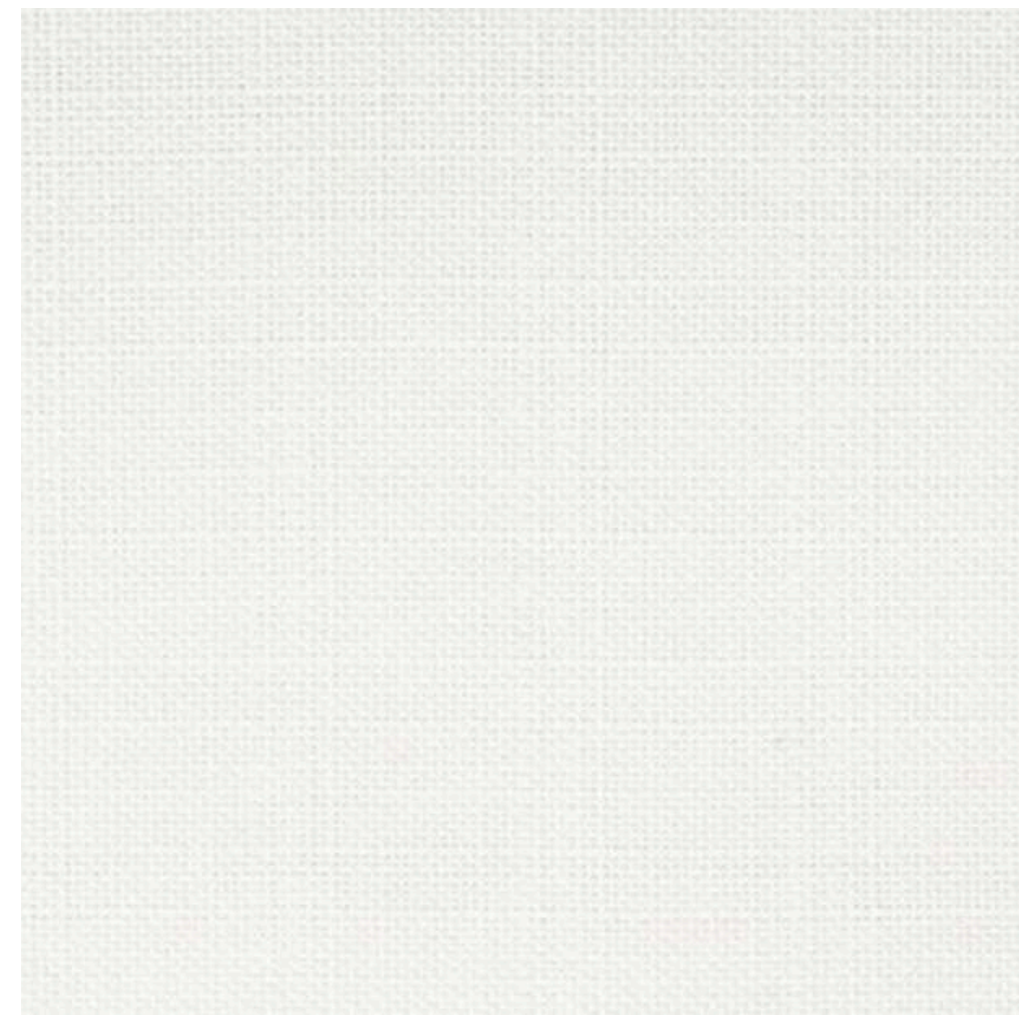
---

## ESSENTIALS RANGE

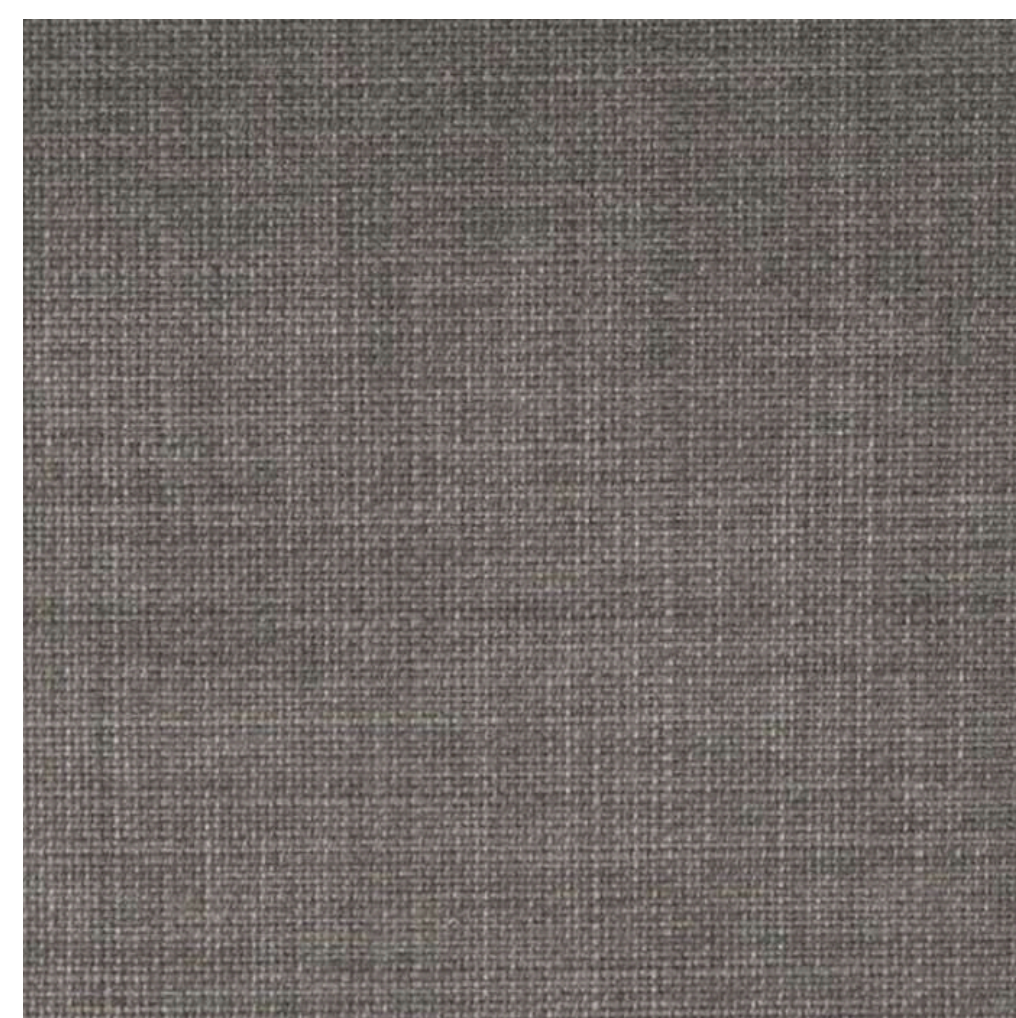
### Hampden Texture

The Hampden Texture is an affordable acoustic curtain fabric - with it's strong acoustic performance it is popular across residential and commercial spaces.  
See [technical specifications](#) for more details.

**Ecru**



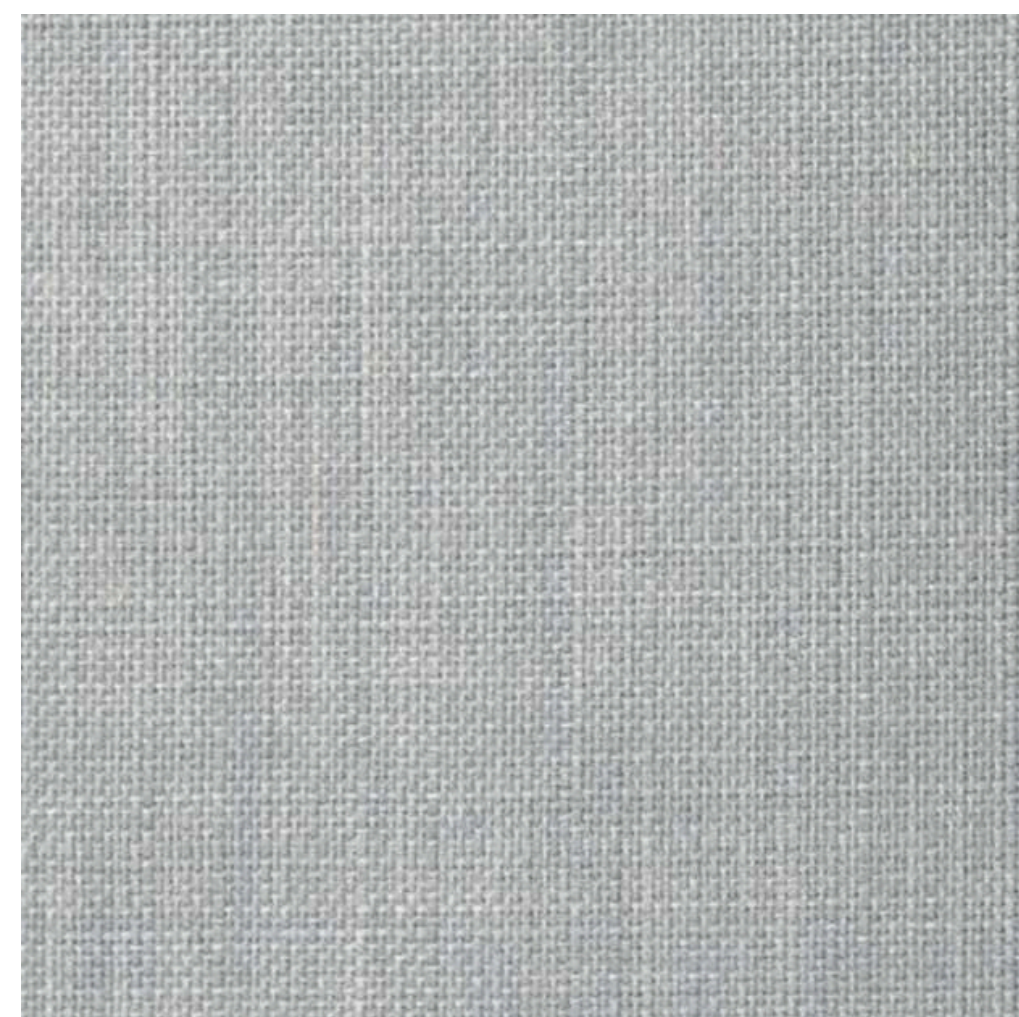
**Nutmeg**



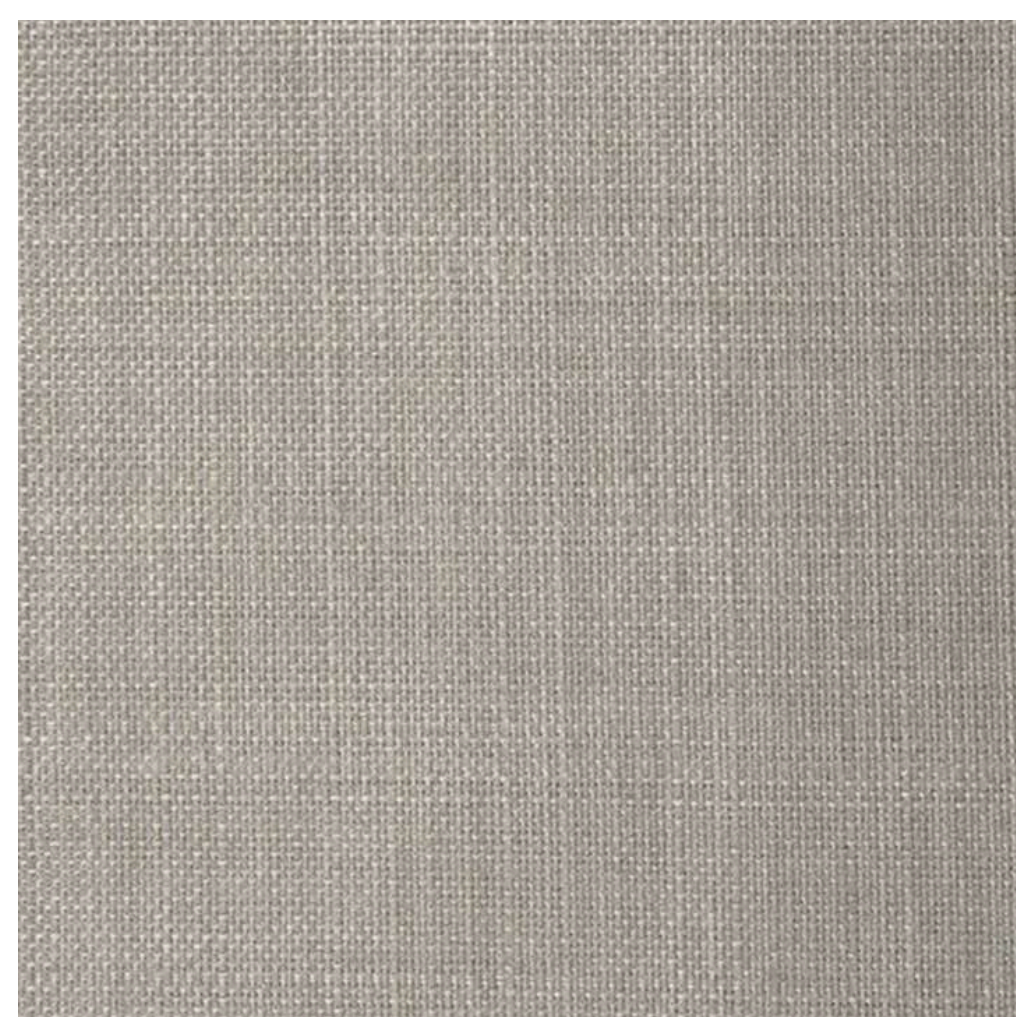
**Biscuit**



**Smoke**



**Donkey**



*Face Fabric is what is visible from within the room*



---

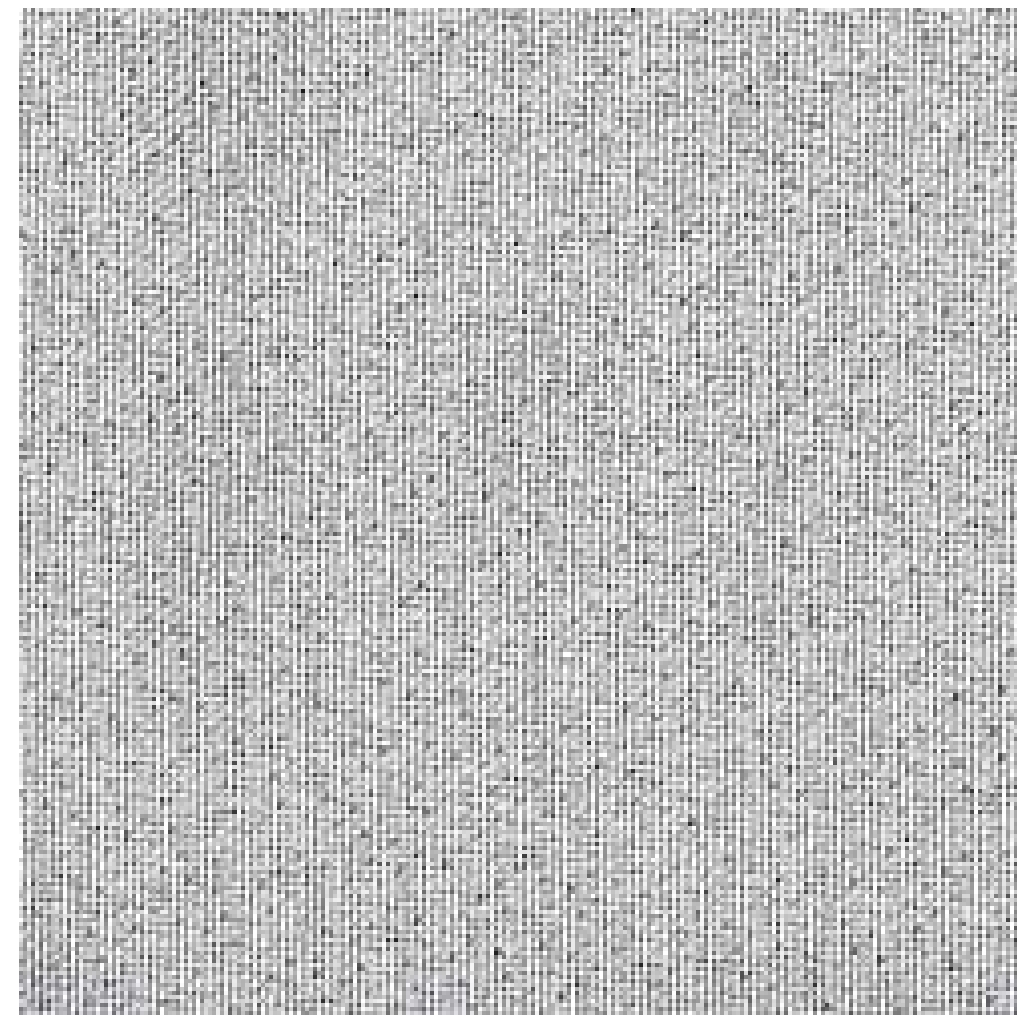
## ESSENTIALS RANGE

### Randwick Texture

The Randwick Texture delivers the best of both worlds, a striking woven aesthetic with strong acoustic properties.

See [technical specifications](#) for more details.

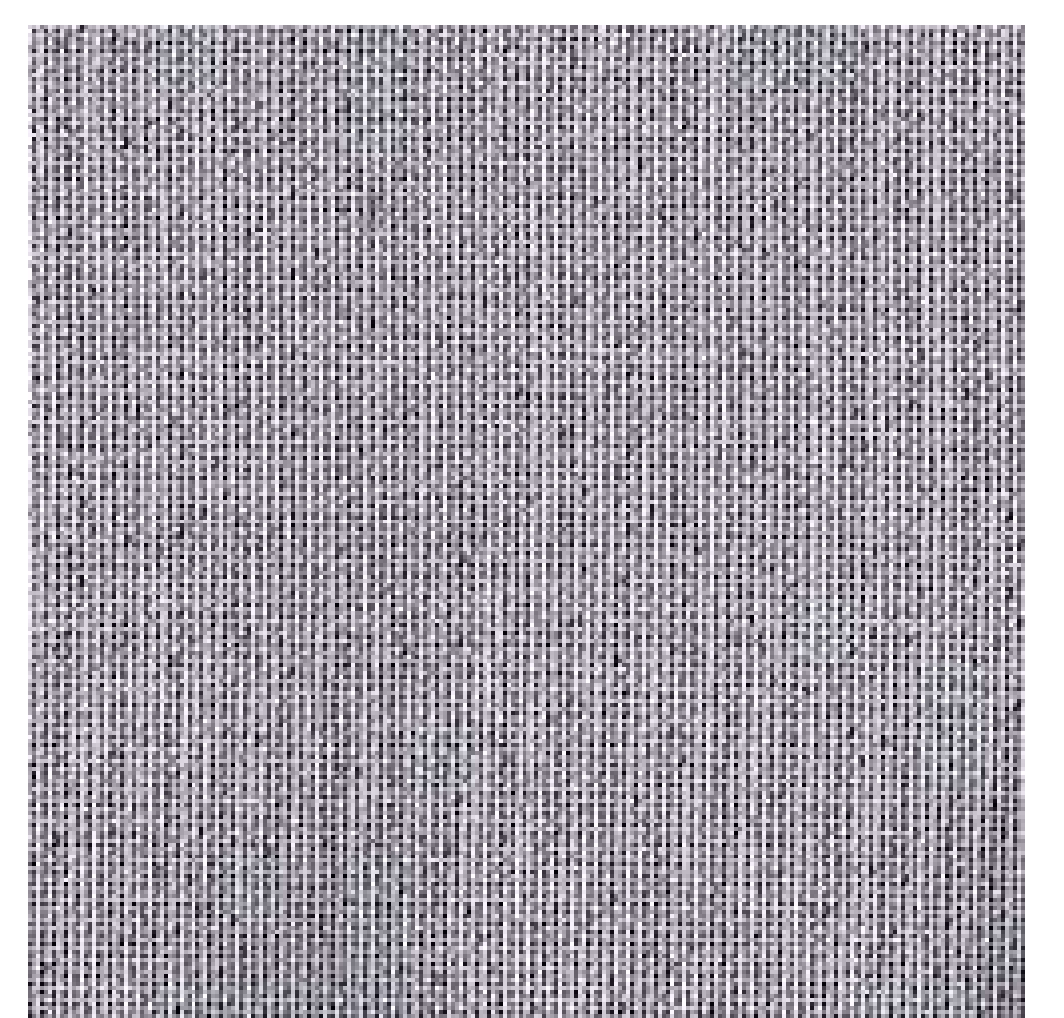
**Pearl**



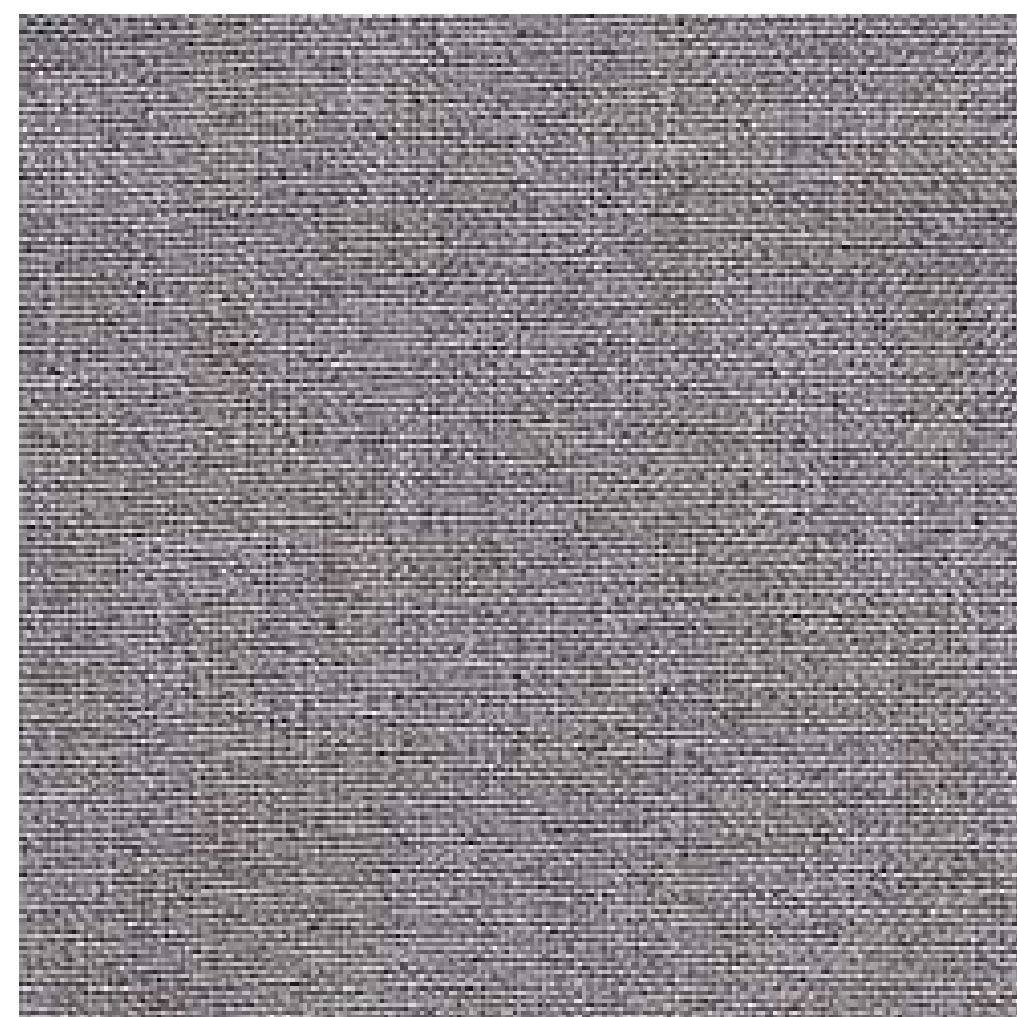
**Fawn**



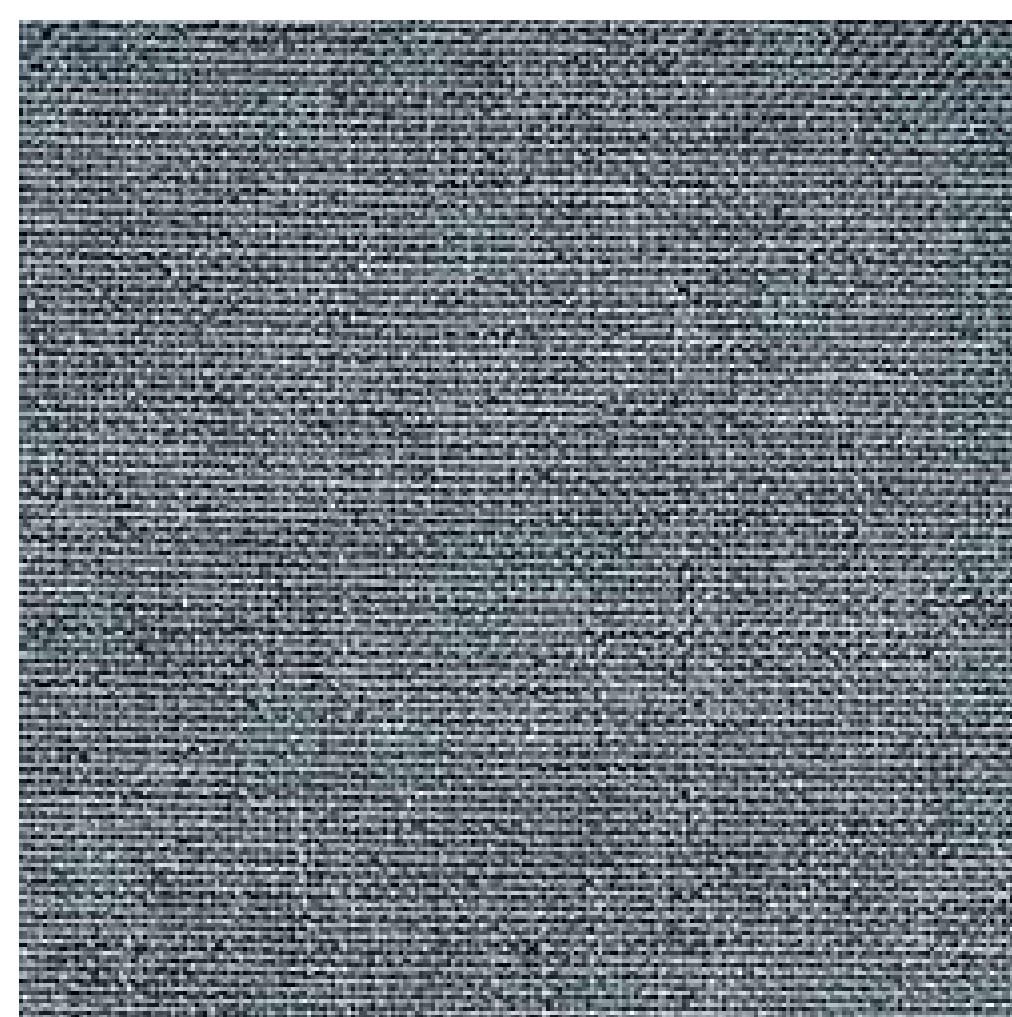
**Cinder**



**Chrome**



**Dusk**



**Slate**



**Onyx**



*Face Fabric is what is visible from within the room*



---

## ESSENTIALS RANGE

### Glenwood Texture

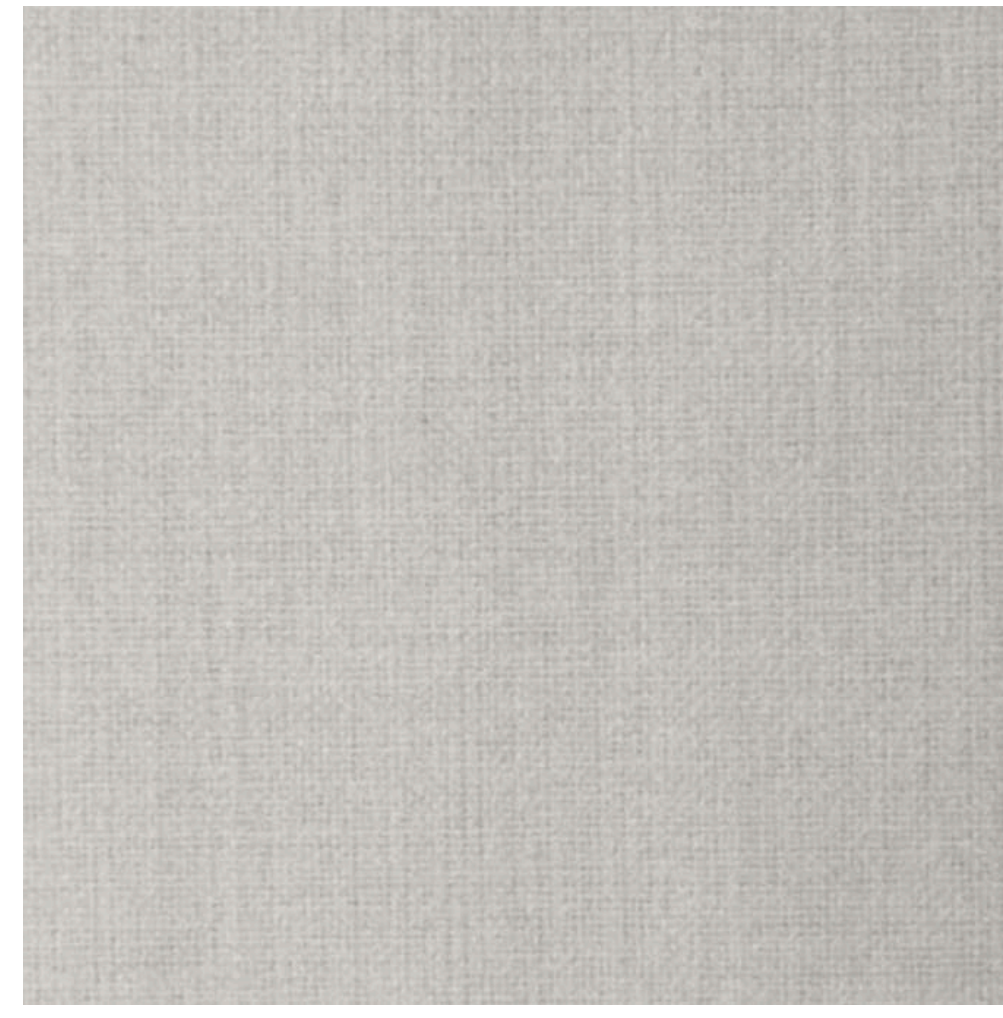
The Glenwood Texture is a flat textured finish that seamlessly blends visual appeal and acoustic performance.

See [technical specifications](#) for more details.

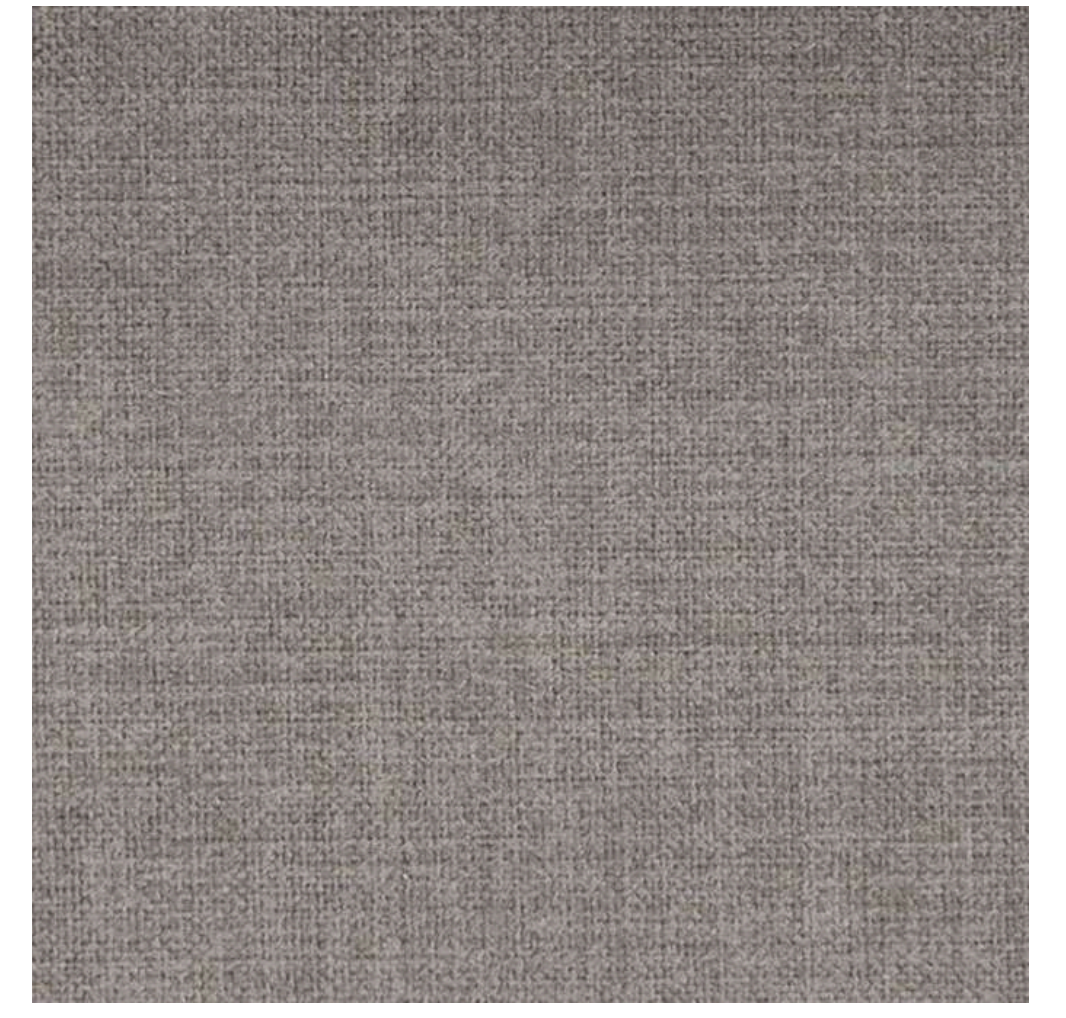
**Driftwood**



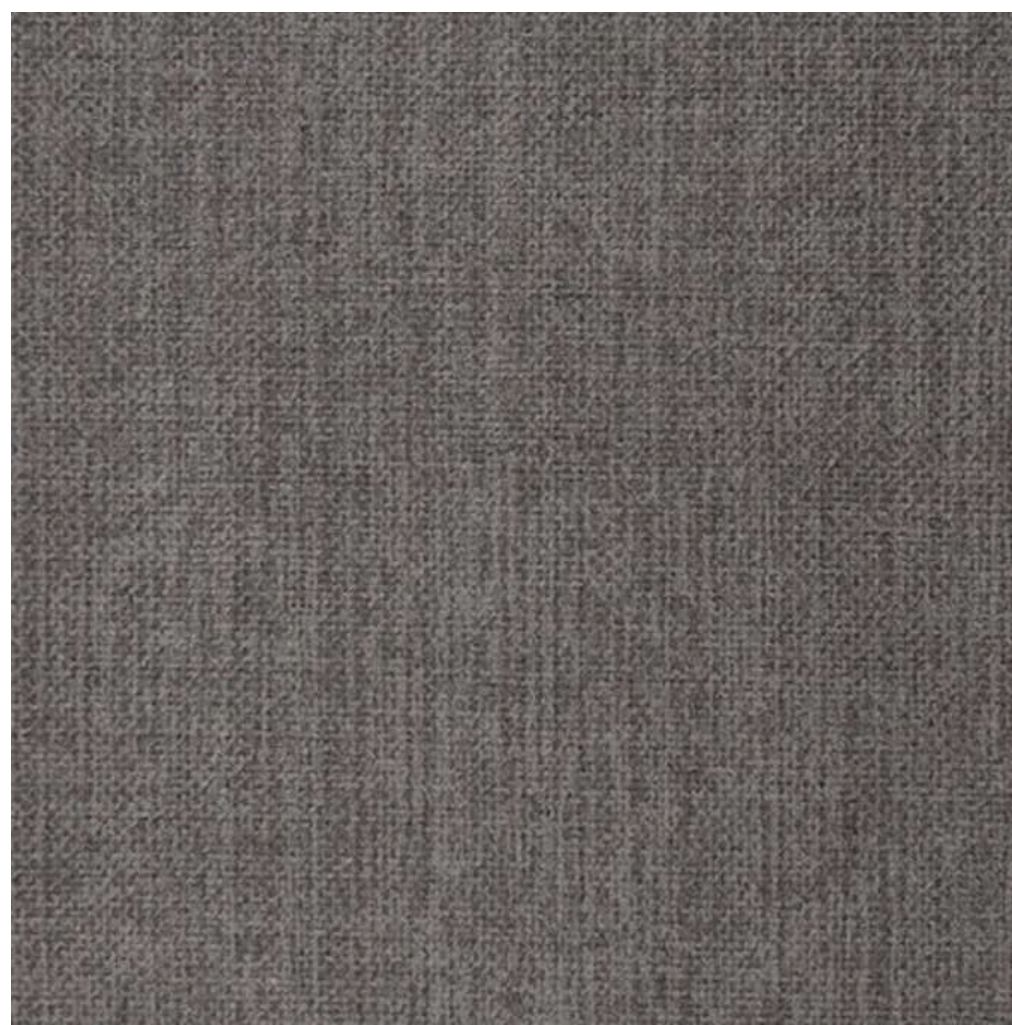
**Parchment**



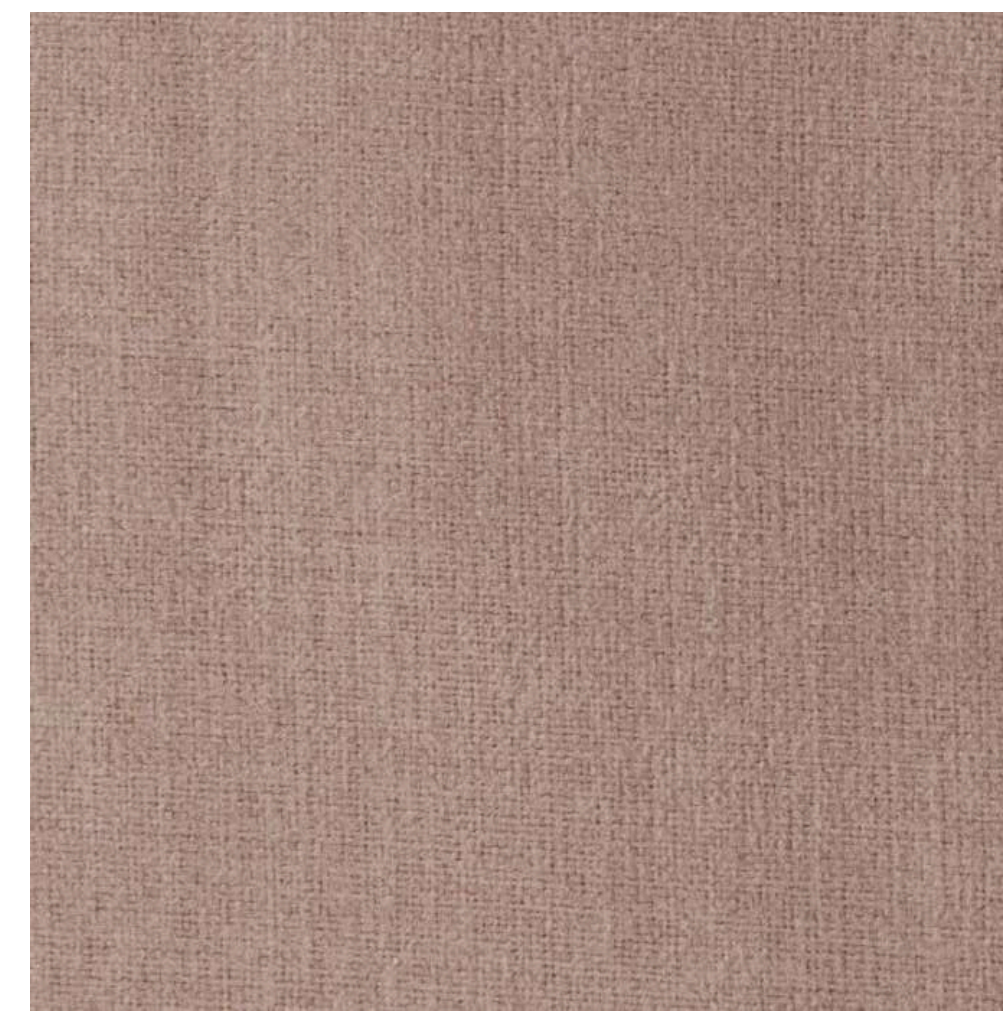
**Donkey**



**Cobblestone**



**Coral**



**Sage**



**Ocean**



**Navy**



*Face Fabric is what is visible from within the room*



---

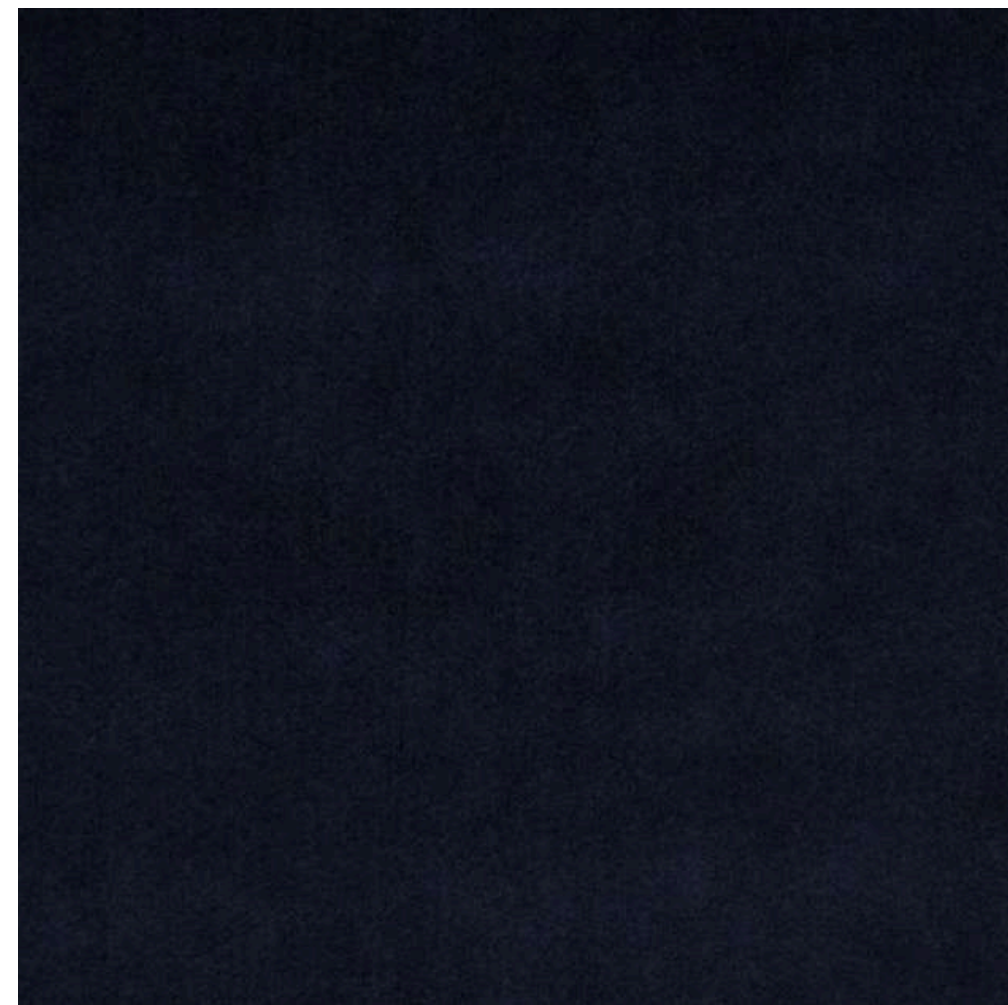
## ESSENTIALS RANGE

### Daria Velvet

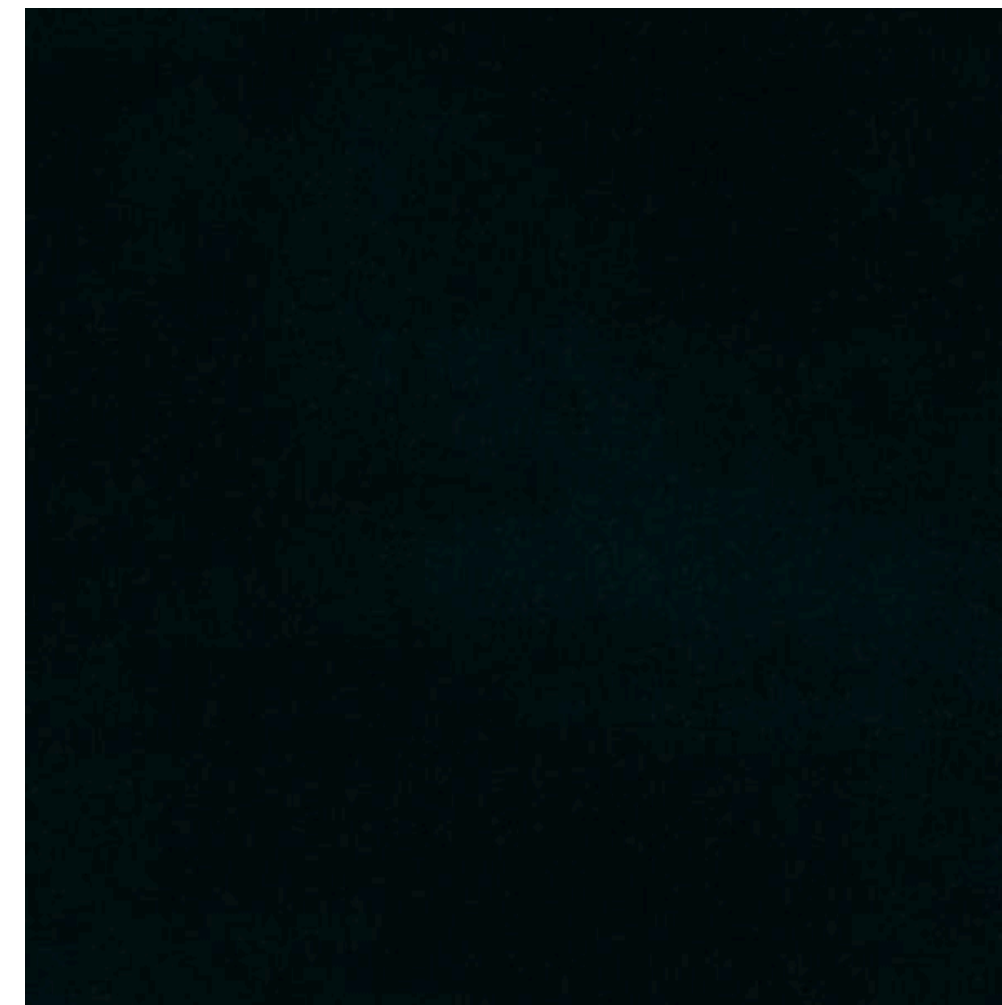
The Daria Velvet is an affordable acoustic curtain fabric. With its strong acoustic performance it is popular across residential and commercial spaces.

See [technical specifications](#) for more details.

**Navy**



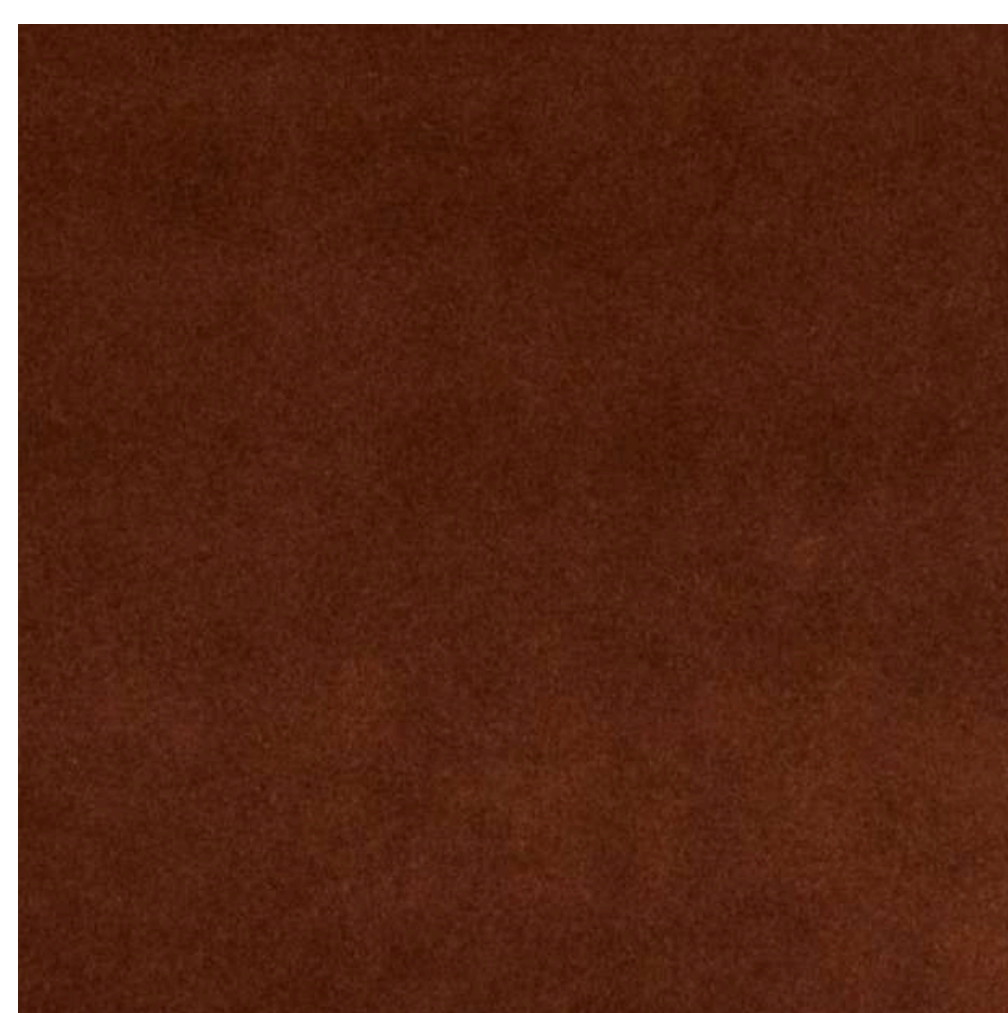
**Bottle**



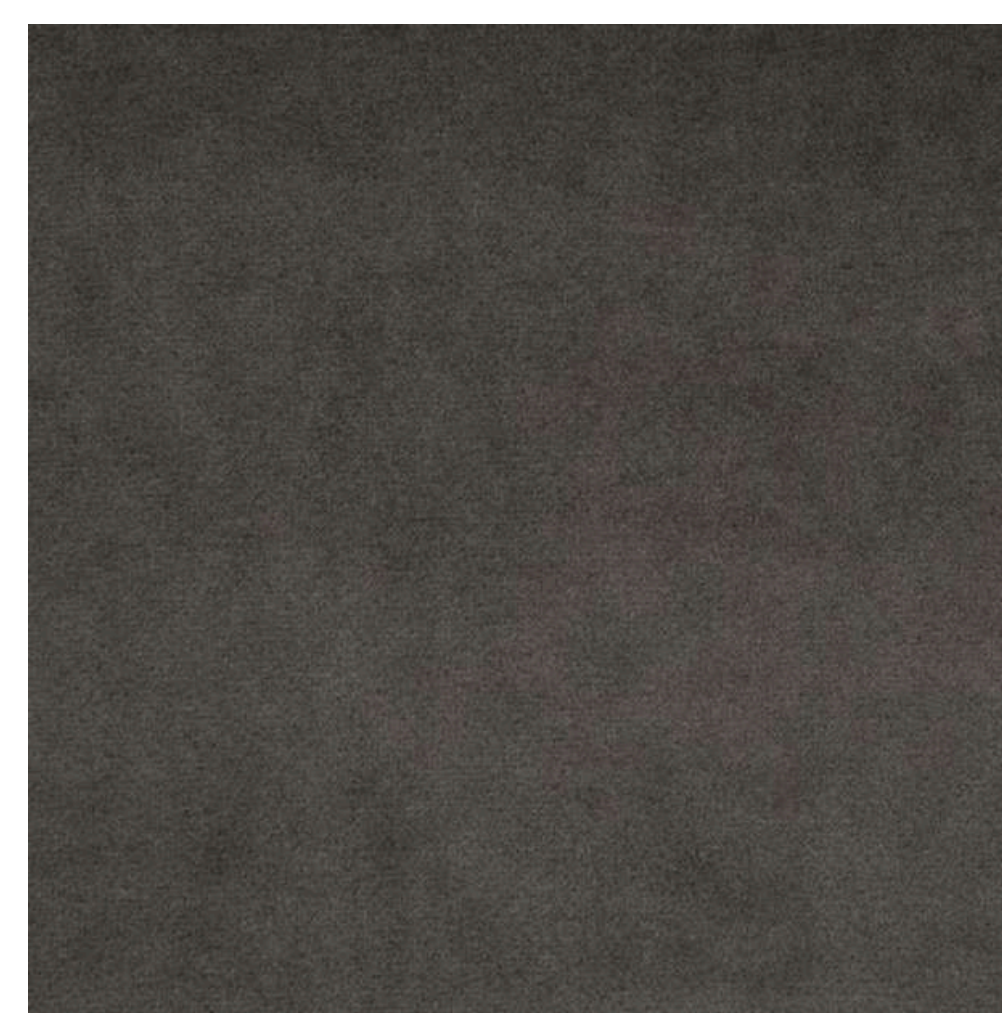
**Fern**



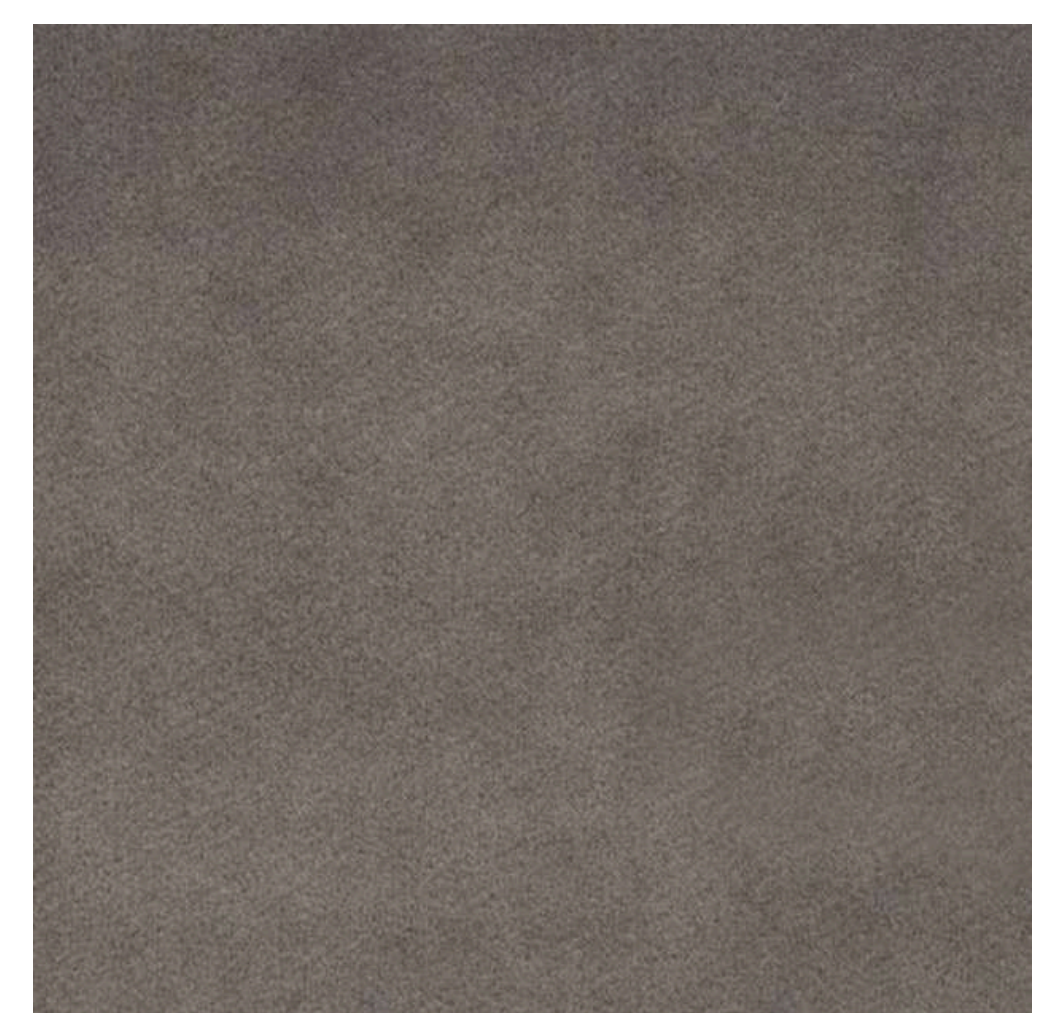
**Rust**



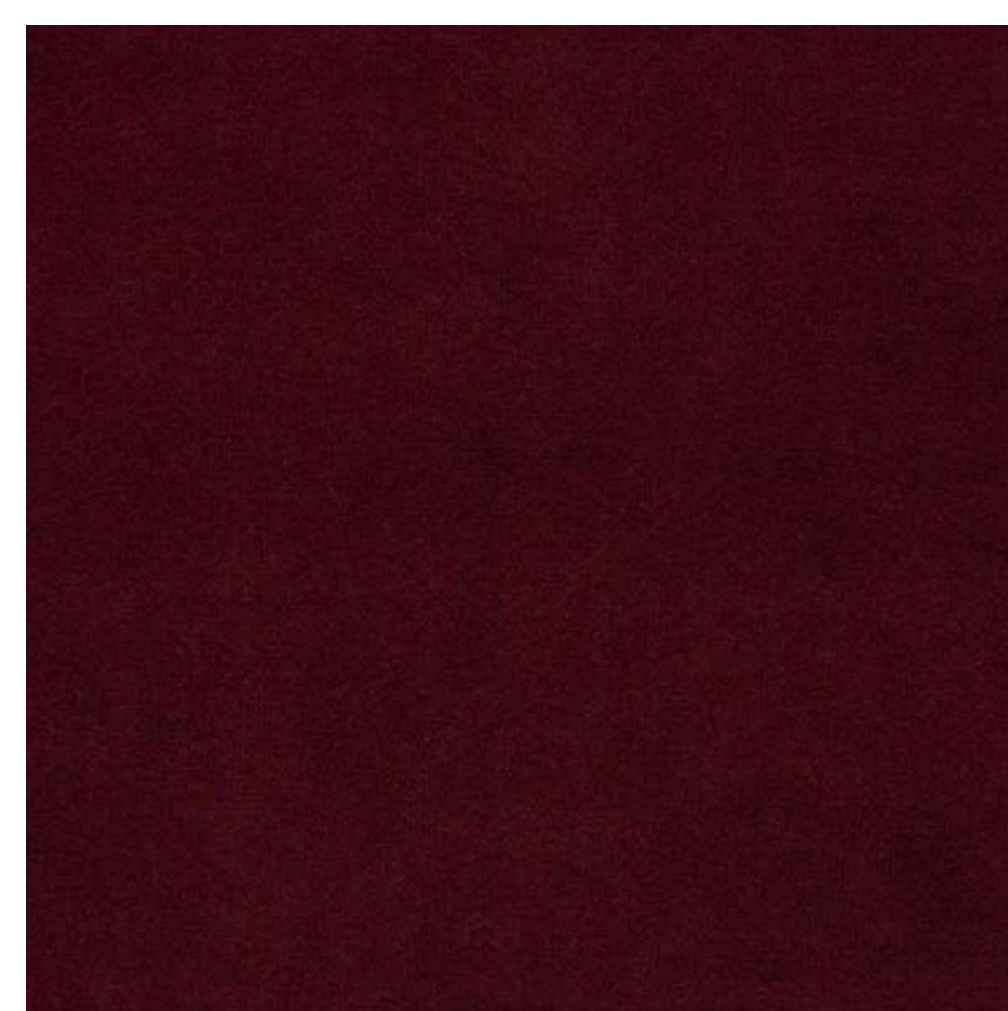
**Pepper**



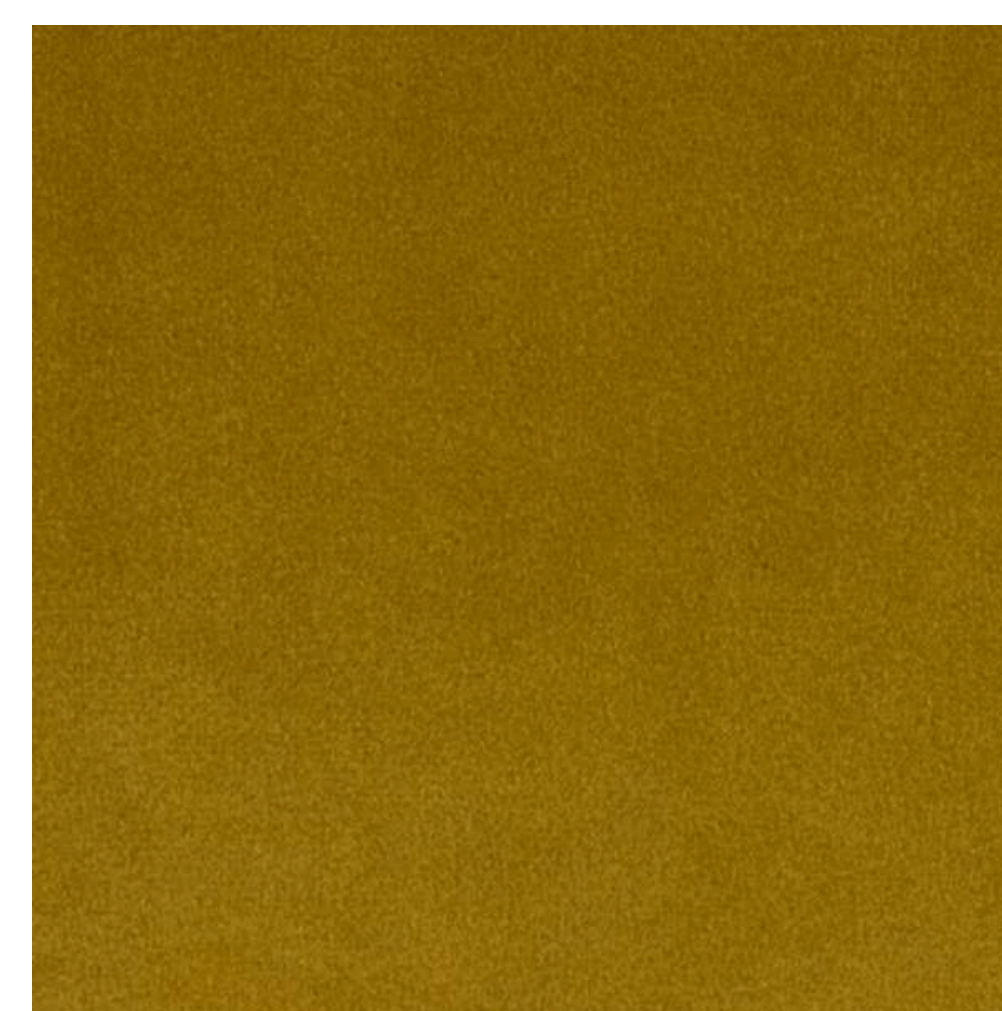
**Donkey**



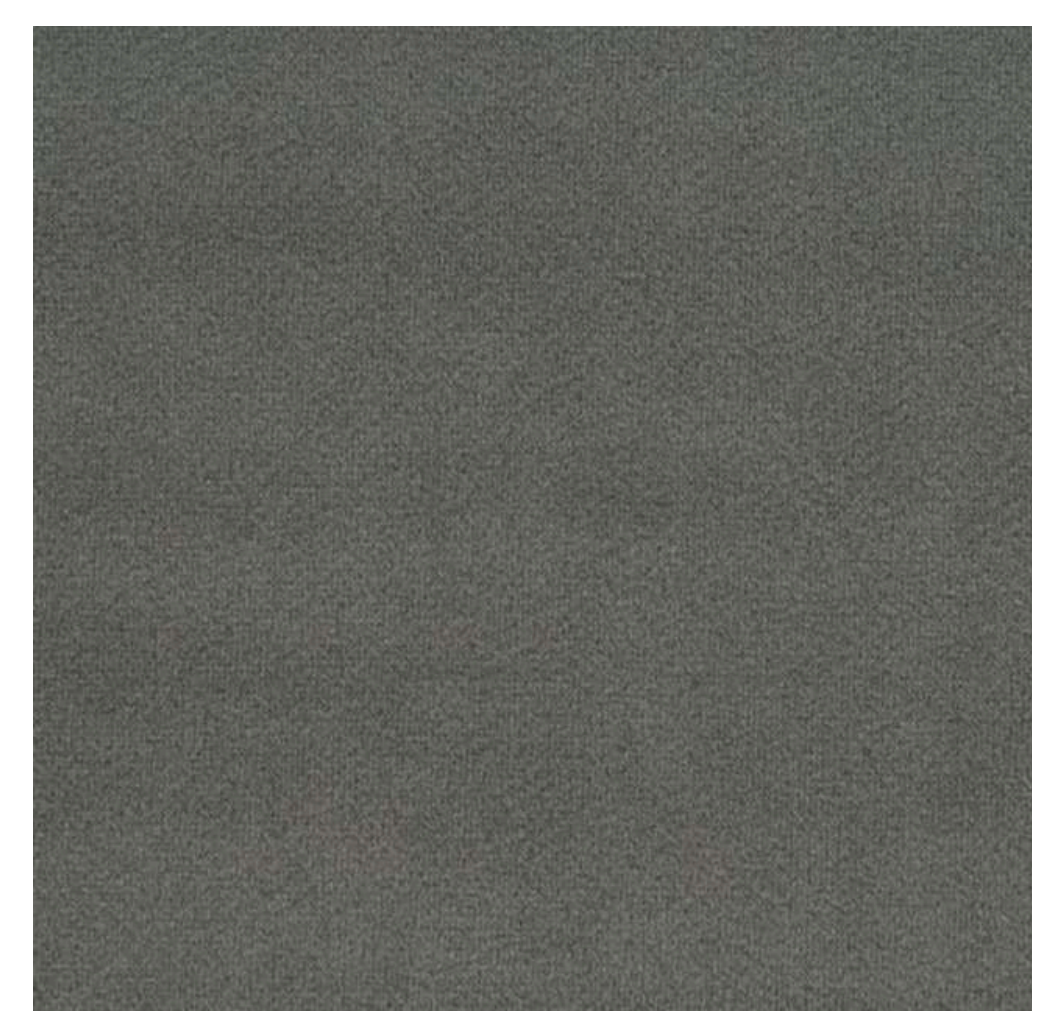
**Port**



**Dijon**



**Lava**



**Black**



*Face Fabric is what is visible from within the room*





---

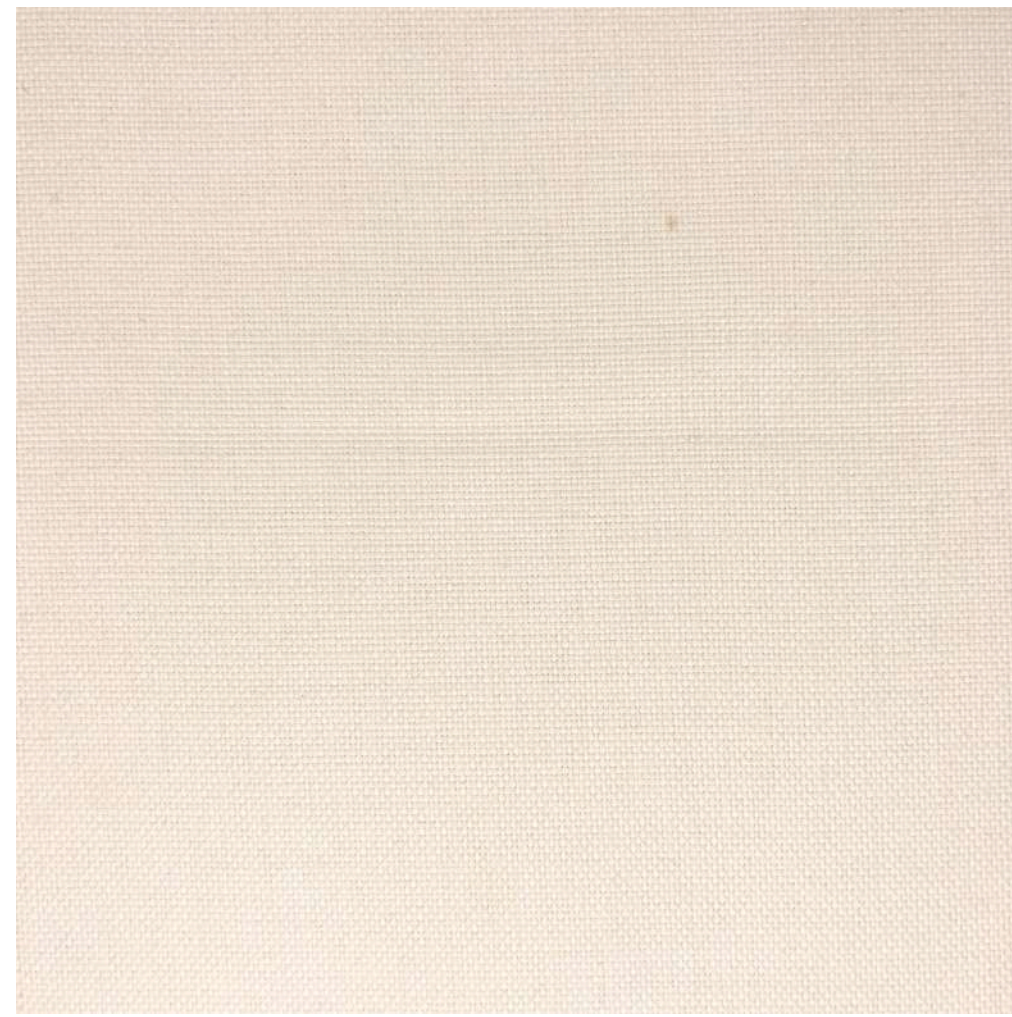
## SELECT RANGE

### Alba Texture

Alba Texture not only offers strong acoustic performance, it is an elegant curtain textile made from post-consumer recycled polyester. Alba Texture has been created and certified with a focus to reduce the environmental impact – and a refined yet natural look that is suitable for all residential and commercial applications.

See [technical specifications](#) for more details.

**Dove**



**Shore**



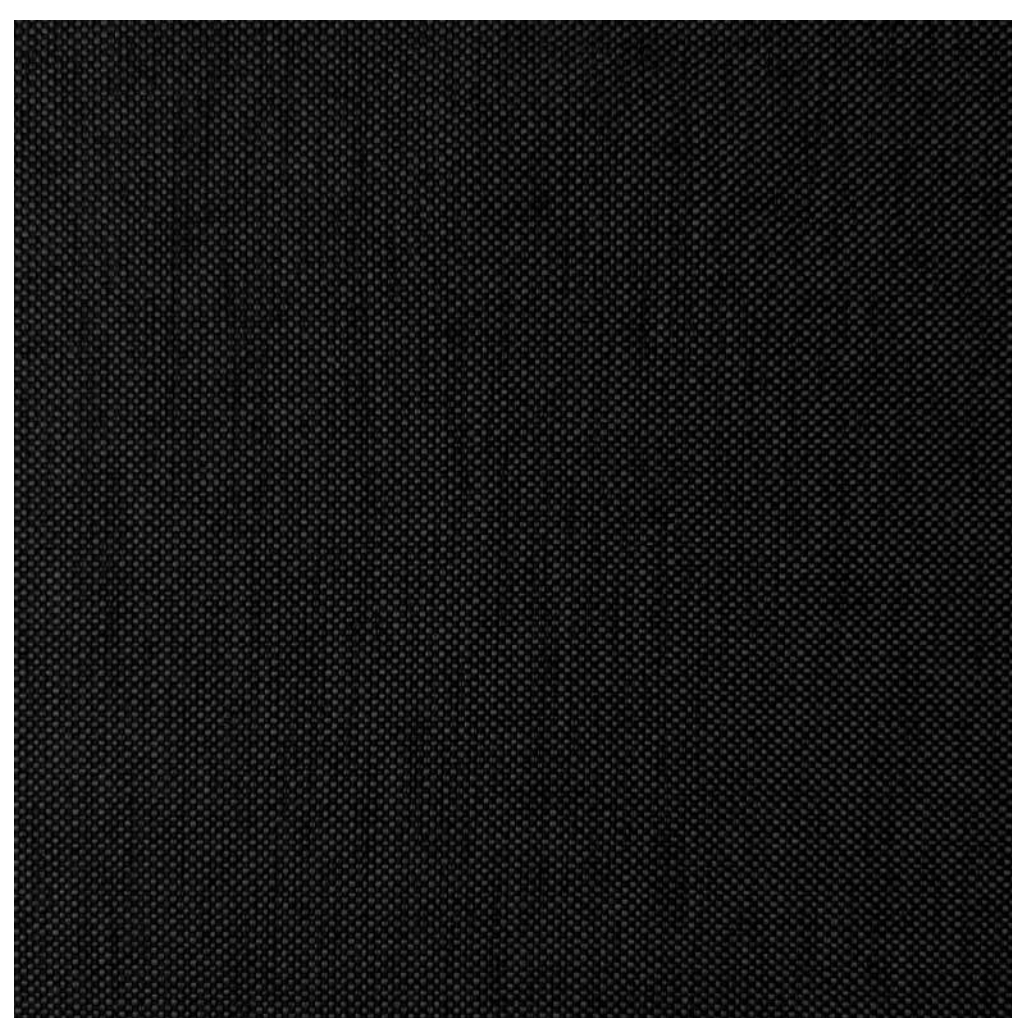
**Wisp**



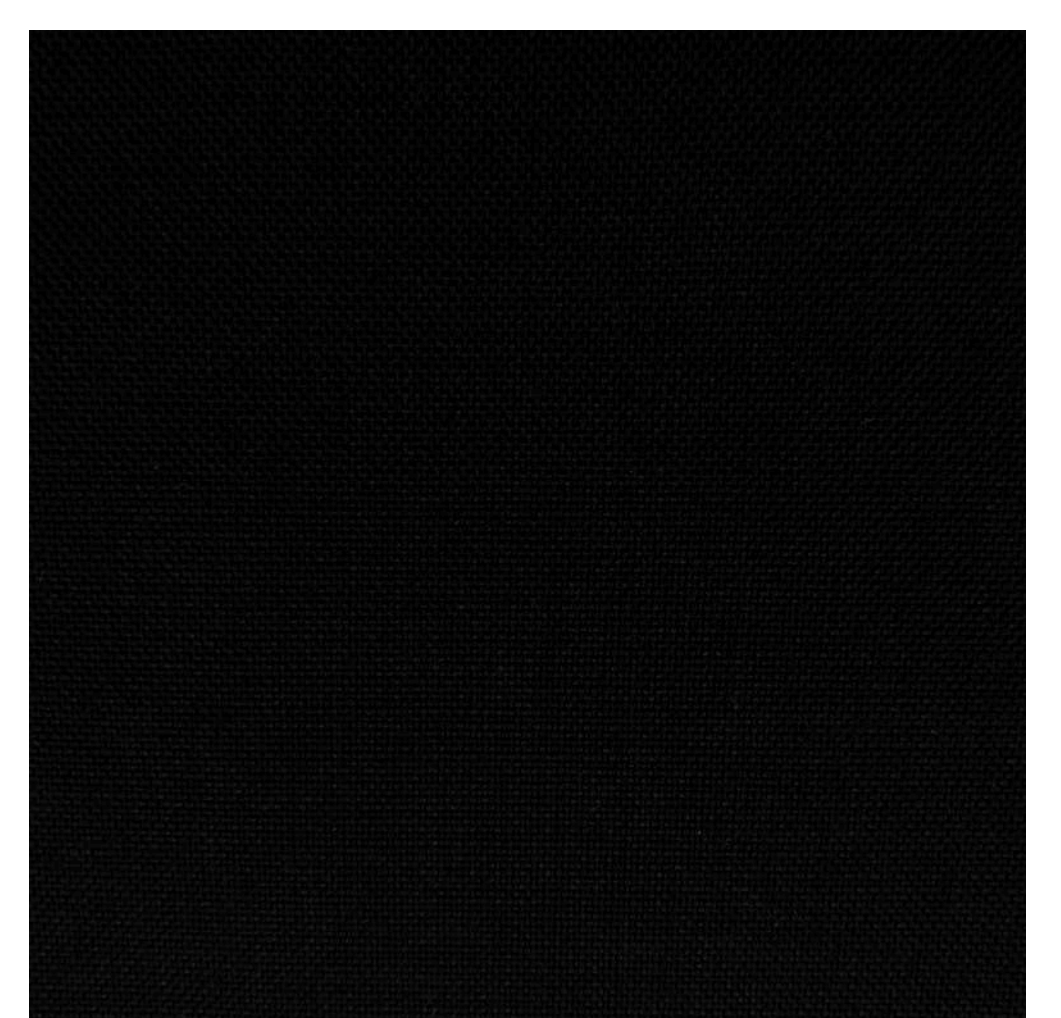
**August**



**Storm**



**Midnight**



*Face Fabric is what is visible from within the room*



---

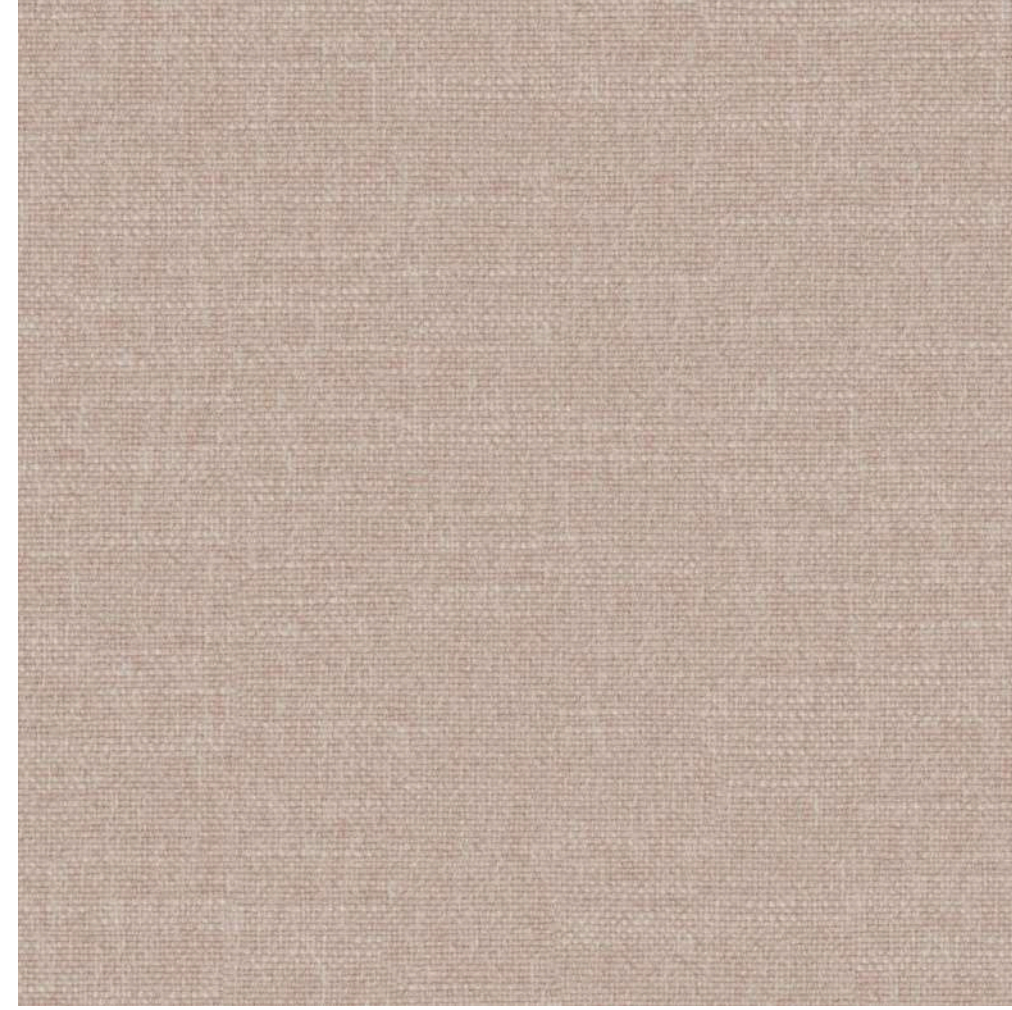
## SELECT RANGE

### Bowral Texture

The Bowral Texture is an beautiful and versatile curtain fabric with very strong acoustic performance. Its premium and elegant design makes it popular for both residential and commercial spaces.

See [technical specifications](#) for more details.

**Blush**



**Moss**



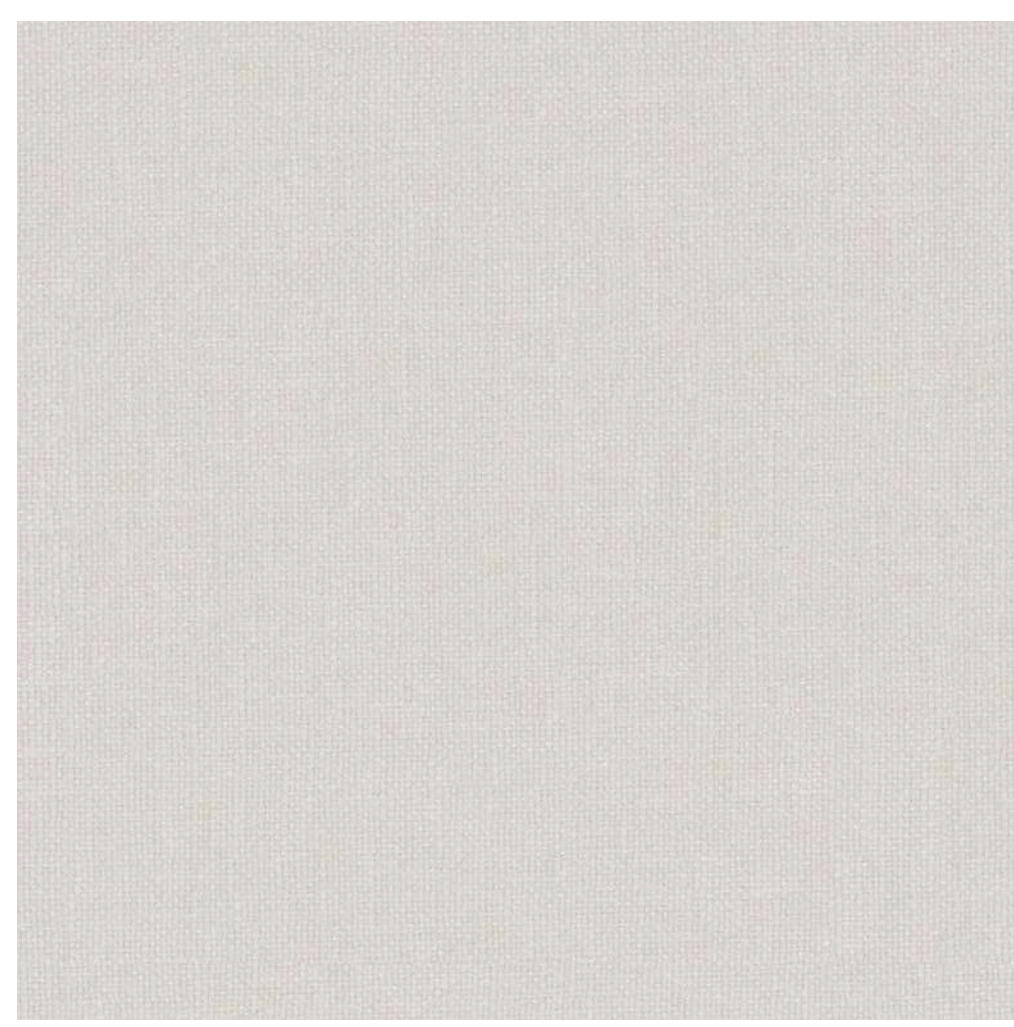
**Brick**



**Charcoal**



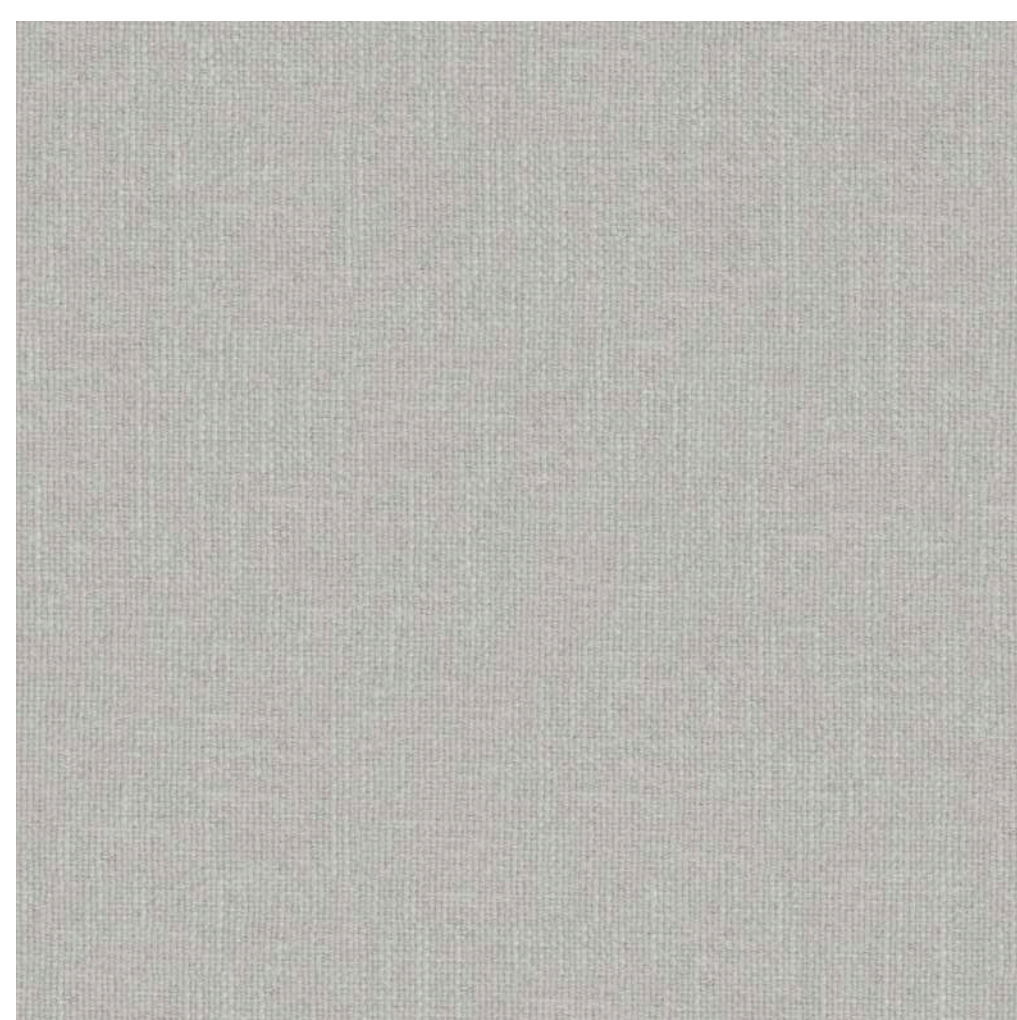
**Oyster**



**Indigo**



**Mist**



**Linen**



*Face Fabric is what is visible from within the room*



---

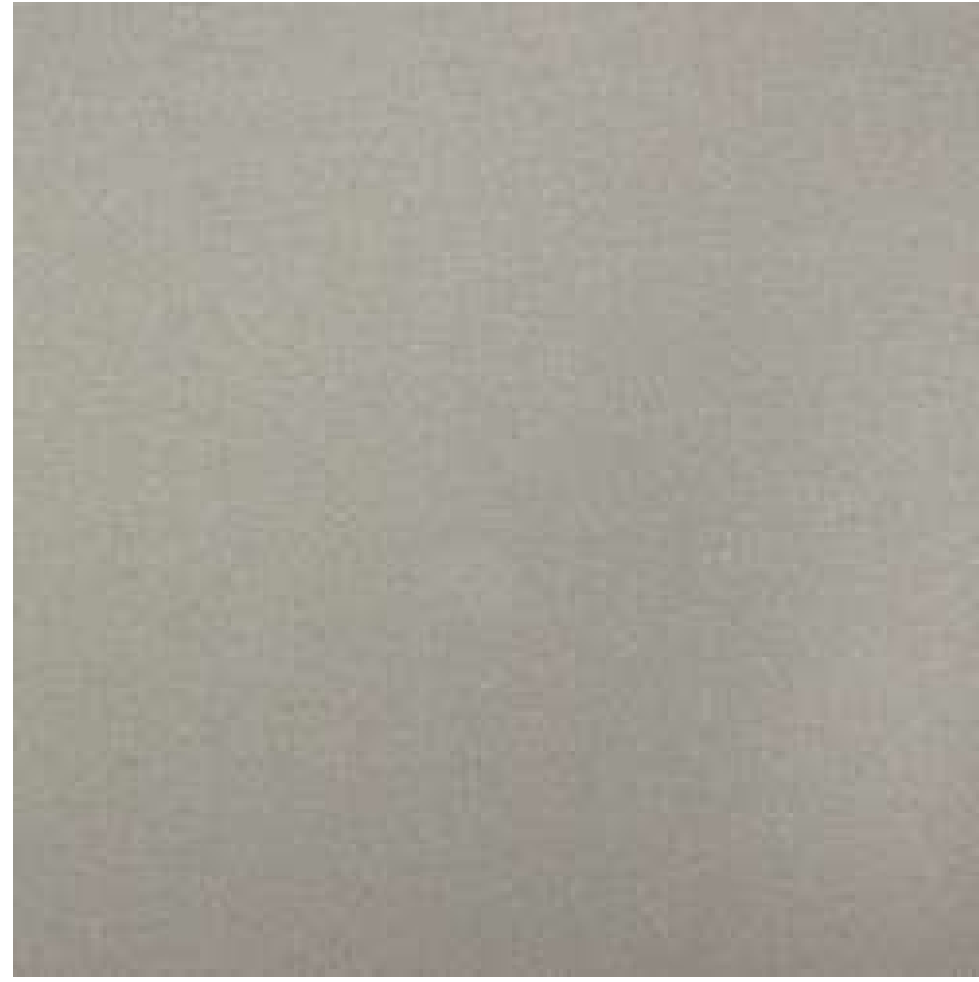
## SELECT RANGE

### Waverley Wool

The Waverley Wool is a premium wool blend fabric with beautiful drape and outstanding acoustic properties. Available in a large range of colours, the Waverley Wool is perfect for both commercial and residential applications.

See [technical specifications](#) for more details.

**Ceramic**



**Reed**



**Silver**



**Seaside**



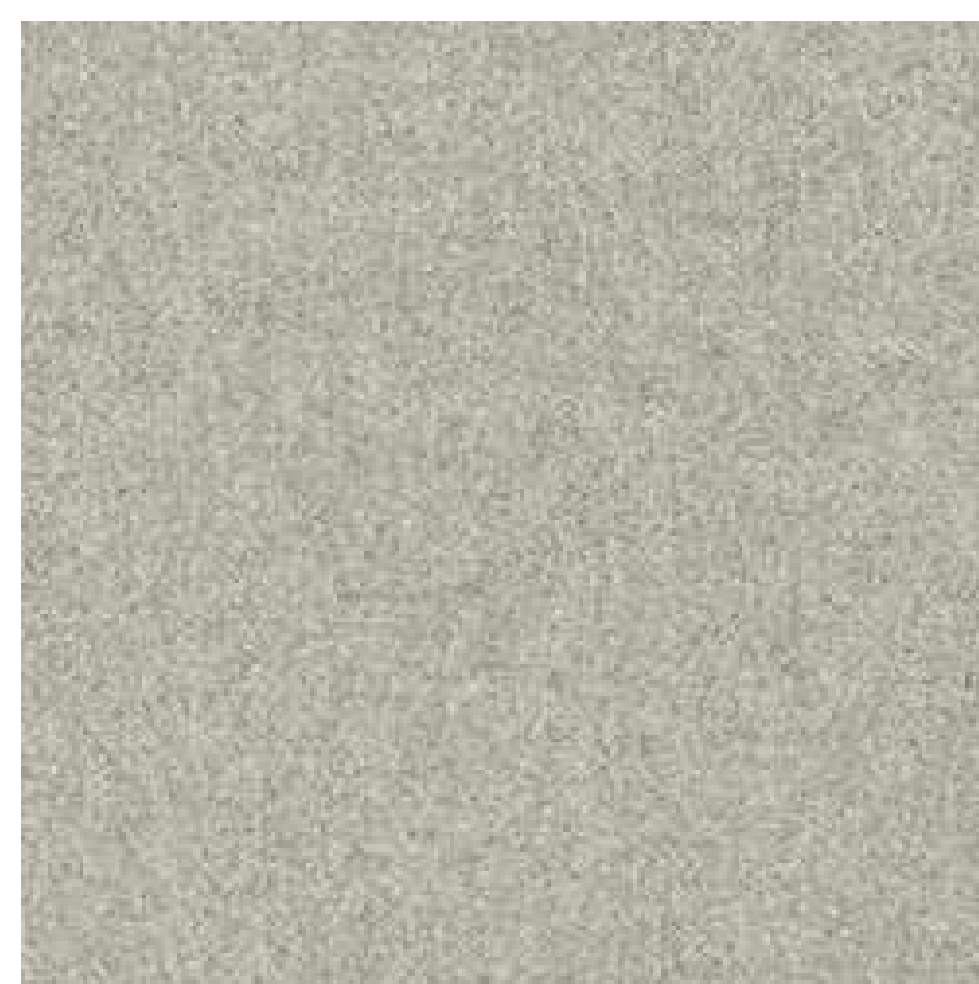
**Liquid**



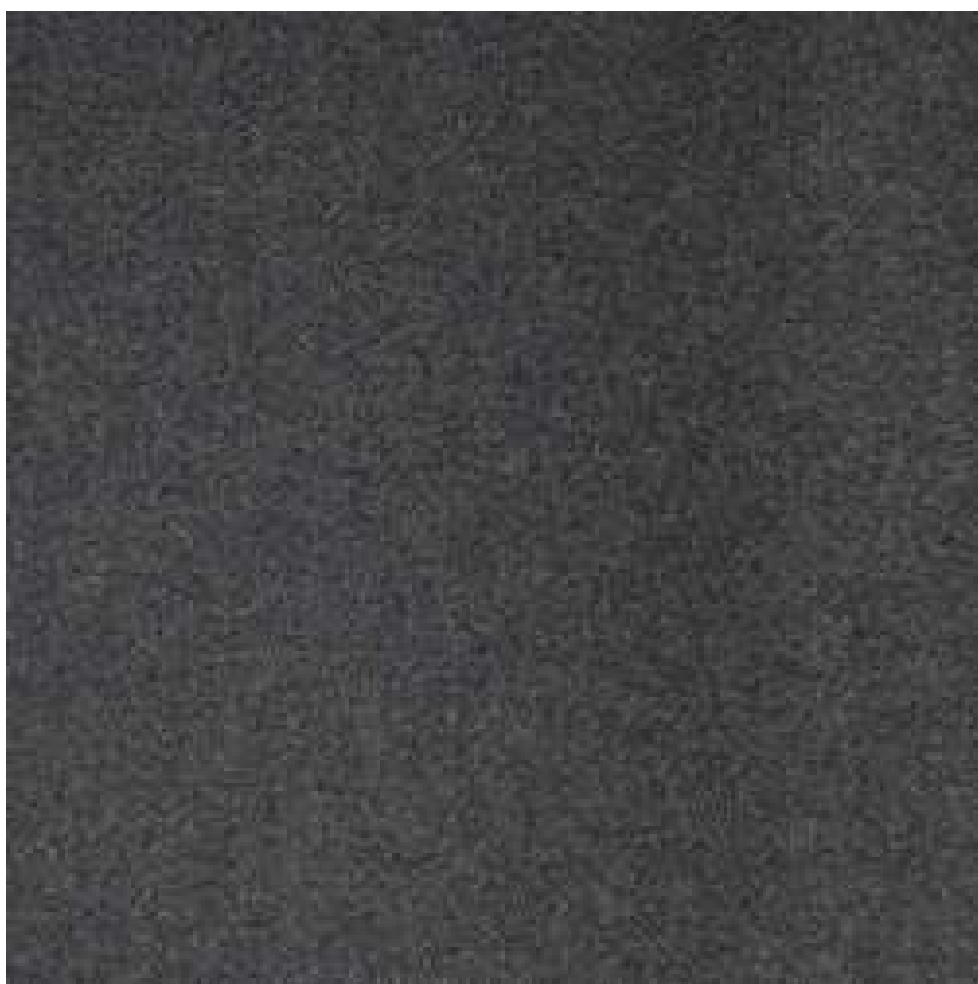
**Sable**



**Smoke**



**Chain**



**Indigo**



**Royal**



**Cardinal**



*Face Fabric is what is visible from within the room*





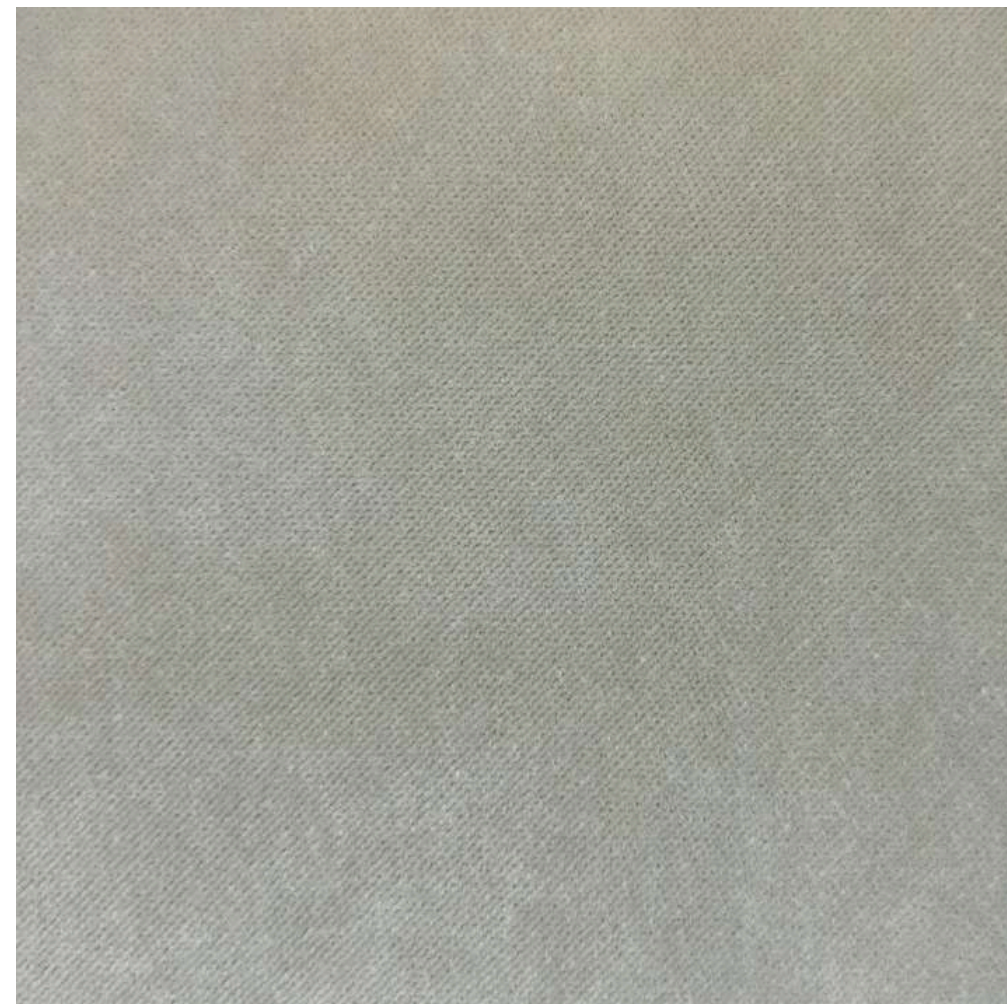
---

## SELECT RANGE

### Northcote Velvet

The Northcote Velvet Is a premium acoustic curtain fabric. Northcote Velvet is popular for both high end residential and commercial spaces  
See [technical specifications](#) for more details.

**Snow**



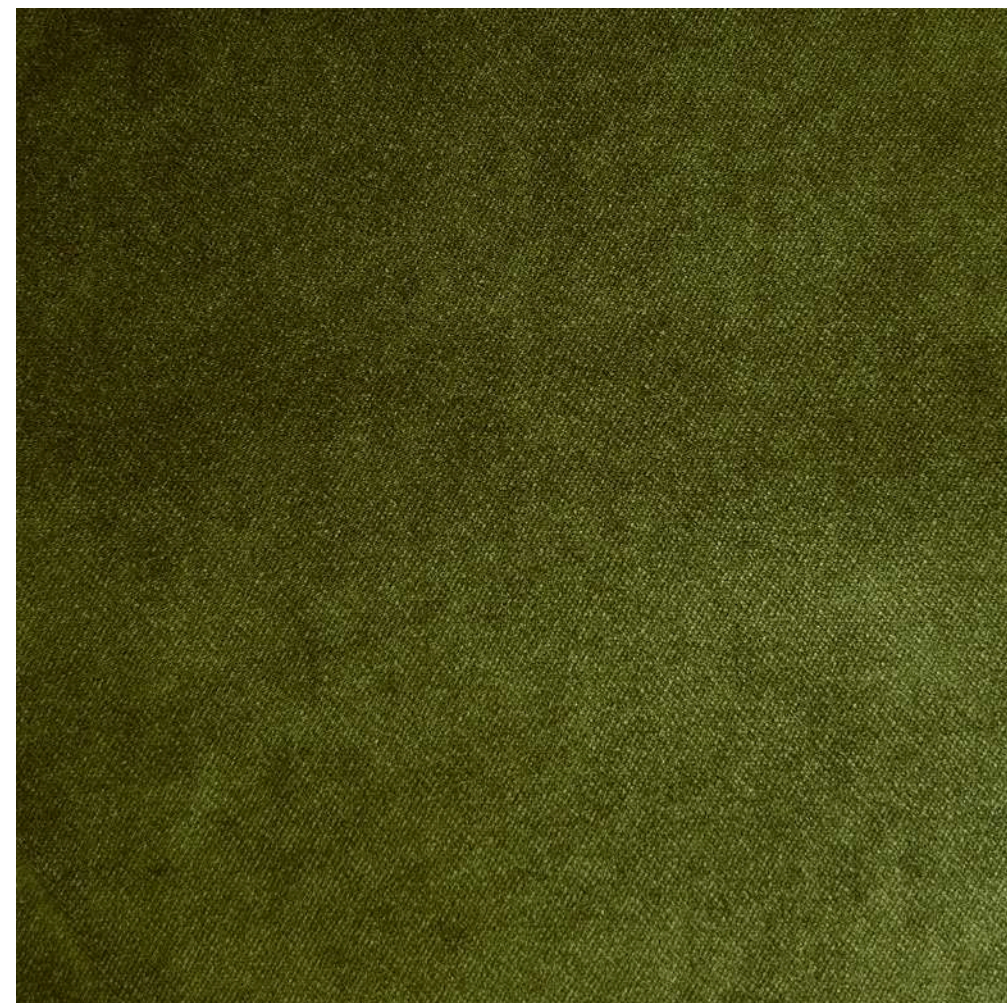
**Safari**



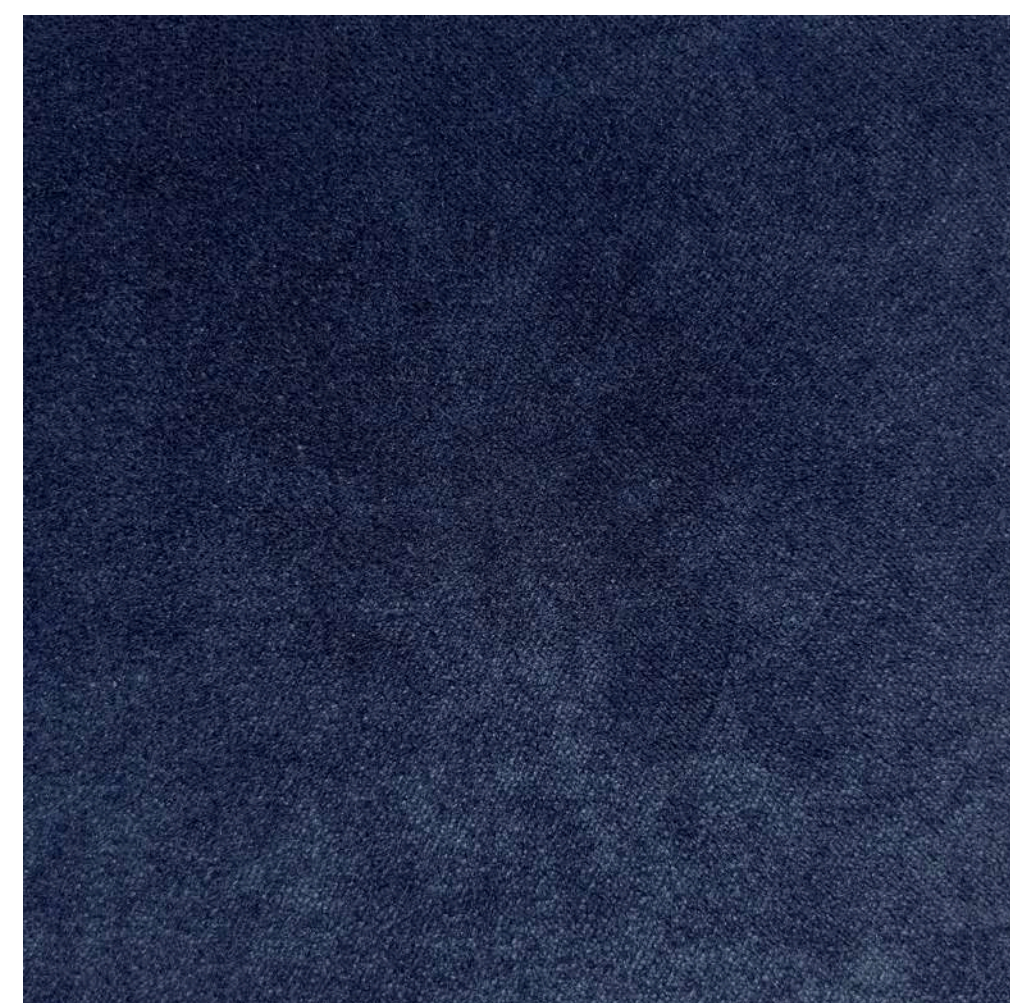
**Slate**



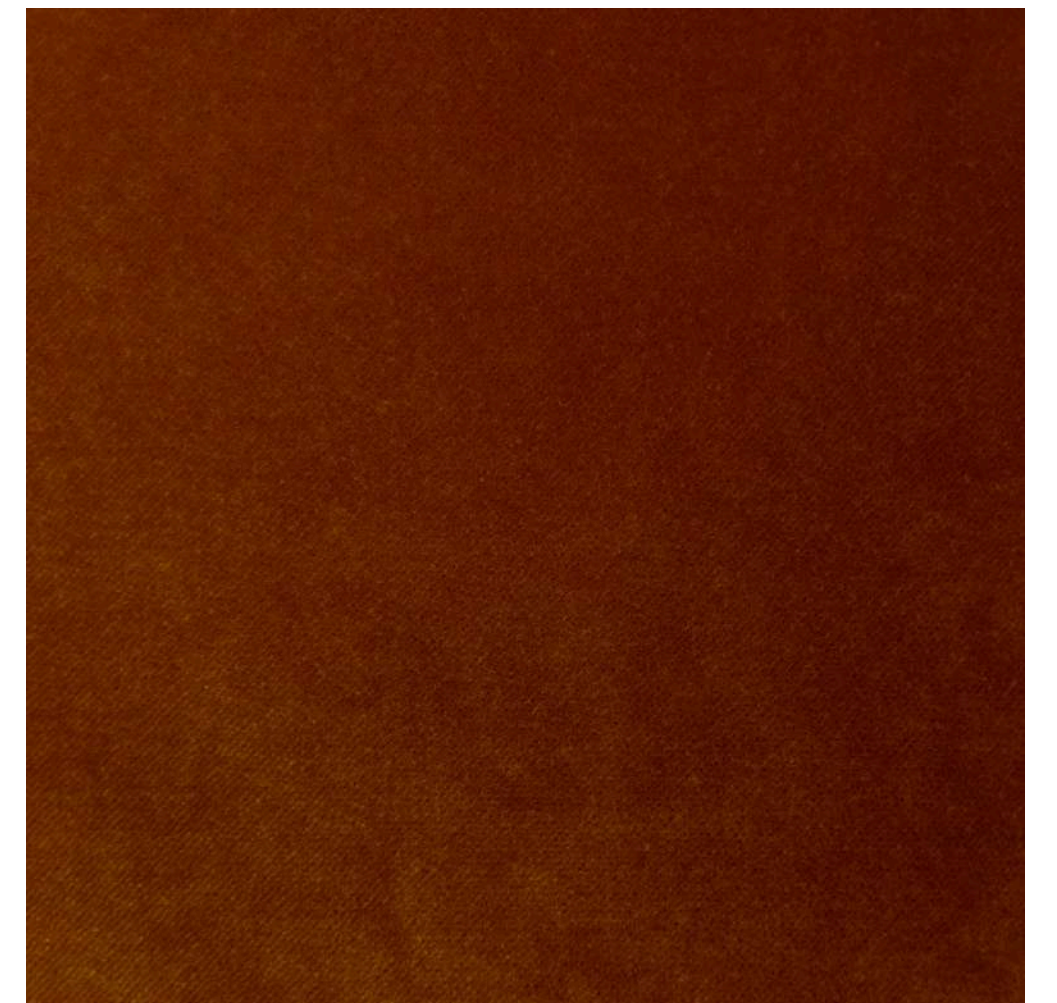
**Wasabi**



**Atlas**



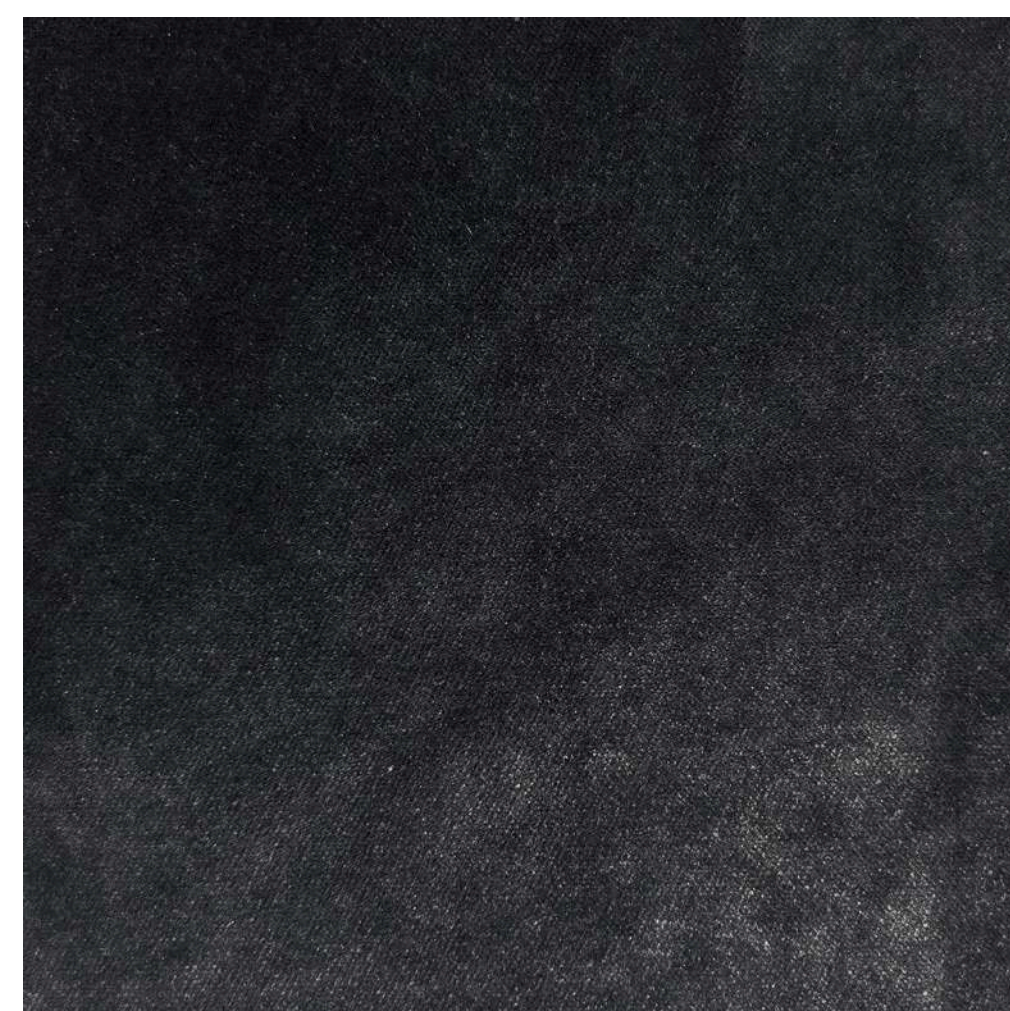
**Copper**



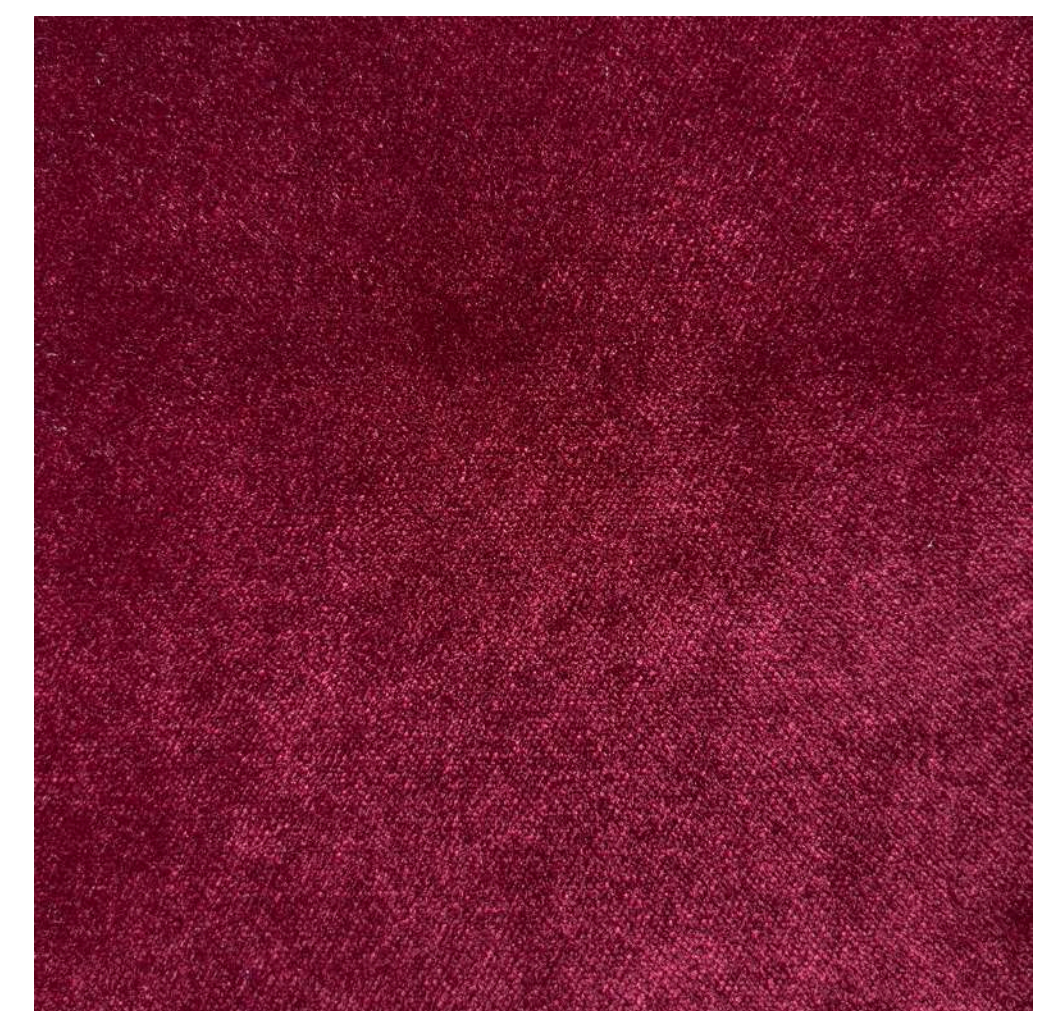
**Fern**



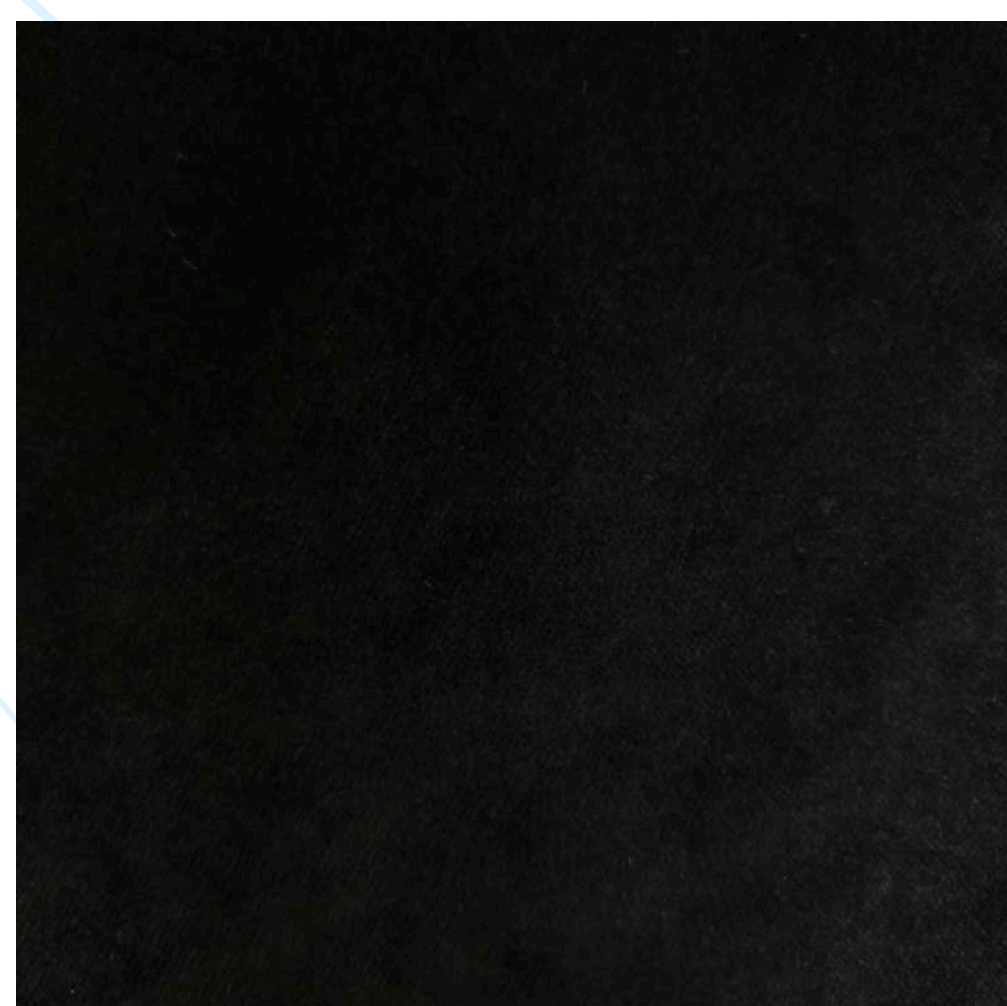
**Pepper**



**Shiraz**



**Panther**



*Face Fabric is what is visible from within the room*





## CONTACT US

**Phone** 1300 911 680

**Email** [info@acousticblindsandcurtains.com.au](mailto:info@acousticblindsandcurtains.com.au)

**Website** [www.acousticblindsandcurtains.com.au](http://www.acousticblindsandcurtains.com.au)