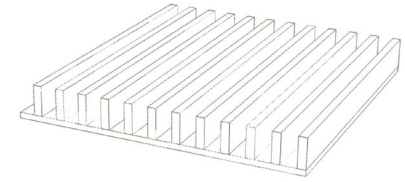


# ACOUSTIC DATA SHEETS

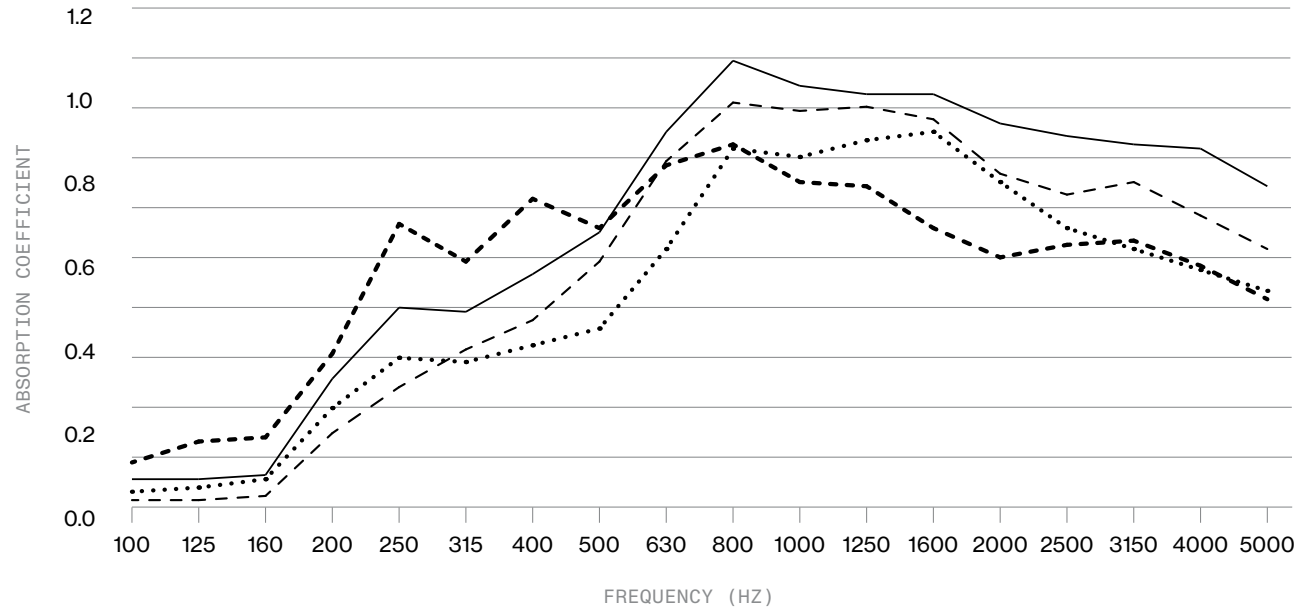
# DECORSLAT

DECORSLAT PANEL WITH 90MM OR 100MM CAVITY | PROFILE DST-B

Acoustic panels



OPEN AREA N/A	NRC 0.60-0.75
<b>PRODUCT OVERVIEW</b> Finishes available - SmartLook, Natural Timber Veneer, 2 Pack Poly Paint, Custom Laminates  Fire Rating - Group 1, 2 or 3  Green Certifications - GECA	
<b>TESTING OVERVIEW</b> NATA Certified   AS 1045-1988, measurement of sound absorption in a reverberation room  Product tested with framing method as per installation guidelines. <a href="#">View Installation Guidelines here.</a>  Substrate: MDF, Solid Timber	
<b>STANDARD LENGTHS AND WIDTH</b> 2400x600mm	



ITEM / DESCRIPTION	100	125	160	200	250	315	400	500	630	800	1K	1.25K	1.6K	2K	2.5K	3.15K	4K	5K
DecorSlat <sup>1</sup>	0.04	0.05	0.07	0.24	0.36	0.35	0.39	0.43	0.62	0.86	0.84	0.88	0.9	0.78	0.67	0.62	0.57	0.52
DecorSlat <sup>2</sup>	0.02	0.02	0.03	0.18	0.29	0.38	0.45	0.59	0.83	0.97	0.95	0.96	0.93	0.8	0.75	0.78	0.7	0.62
DecorSlat <sup>3</sup>	0.07	0.07	0.08	0.31	0.48	0.47	0.56	0.66	0.9	1.07	1.01	0.99	0.99	0.92	0.89	0.87	0.86	0.77
DecorSlat <sup>4</sup>	0.11	0.16	0.17	0.37	0.68	0.59	0.74	0.67	0.82	0.87	0.78	0.77	0.67	0.6	0.63	0.64	0.58	0.5

DecorSlat<sup>1</sup> – DecorSlat panel 12.5mm thick laminated with Pyrotek Sorbertextile P44FR – 50mm cavity — NRC 0.60 —  $\alpha_w$  0.55 — SAC D

DecorSlat<sup>2</sup> – DecorSlat panel 12.5mm thick with Pyrotek Ecohush 7mm thick – 50mm cavity — NRC 0.65 —  $\alpha_w$  0.60 — SAC C

DecorSlat<sup>3</sup> – DecorSlat panel 12.5mm thick laminated with Pyrotek Sorbertextile P44FR, with Pyrotek Ecohush 7mm thick – 50mm cavity — NRC 0.75 —  $\alpha_w$  0.70 — SAC C

DecorSlat<sup>4</sup> – DecorSlat panel 12.5mm thick laminated with Pyrotek Sorbertextile P44FR – 100mm cavity — NRC 0.70 —  $\alpha_w$  0.70 — SAC C

# GET IN TOUCH