



# Safety, security and style for apartment living





*Crimsafe sliding doors provide security without obstructing views and airflow.*

# Why choose Crimsafe for your apartment?

Burglars often target high-occupancy areas, and apartment buildings are no exception.

Even units above ground level can be broken into.

Crimsafe is the strongest security screen available on the market, providing you with safety and security for your home, plus so many other benefits.

## Applications for Crimsafe

- Entry doors
- Windows
- Balcony areas
- Emergency exits
- Storage areas
- Courtyard enclosures
- Garage security
- Pool fencing
- Rooftop enclosures

## Features and benefits

- Strong security
- Fresh air and breezes
- Energy efficiency
- Unhindered views
- Fall protection from heights
- Insect protection
- Hail protection
- Fire protection
- Extended warranty up to 15 years



*Securing upper level balconies keeps out unwanted intruders, including insects.*

# Crimsafe for apartments

People living in apartment buildings often don't know all of their neighbours, making it easy for strangers to be in the building without raising suspicion.

Securing the main entry points, windows and balcony areas helps to keep your apartment secure, as well as providing other benefits such as fresh air, breezes and natural light.

Crimsafe can also be used to secure storage areas, courtyards, garages, pool and rooftop areas.

## Main entry doors

Apartment buildings experience a lot of foot-traffic from residents and their guests.

When a stranger knocks on your door unexpectedly, a security screen door provides an added layer of protection.

A Crimsafe security screen on the main entry door, laundry door or other doors:

- protects you from unwanted intruders, and makes sure you only allow invited guests into your home
- creates air-flow and a through-breeze, without compromising security.

## Emergency exits

If your apartment is on the ground floor, or you have windows close to a fire escape, Crimsafe has developed a keyless emergency exit window system called Safe-S-Capes®.

- inward or outward opening hinged window screens
- sliding window screens.

## Windows

Crimsafe window screens can be made for all shapes, sizes and configurations, including hinged, sliding, casement style and louvres.

Securing your apartment windows with Crimsafe provides:

- security from intruders
- fall protection from heights
- insect protection
- energy efficiency
- heat and UV protection
- storm protection from hail and flying debris
- fire protection.



Safe-S-Cape® windows for emergency exit



*Stacking doors can secure even the widest openings, creating a feeling of light and space between indoor and outdoor living areas.*

## Balcony areas

It's easy to secure your apartment balcony or outdoor area with Crimsafe:

- single, double or triple sliding doors can be custom-made to suit even the largest opening
- bi-fold and stacking doors are also available for wide openings, providing a stylish alternative to sliding doors
- Crimsafe can be made to completely enclose an outdoor area, creating additional living space that is entirely secure from intruders and insects
- no need for bars and grilles so you can enjoy views and a feeling of open space.

## Courtyard enclosures

Crimsafe can be applied to outdoor and courtyard areas:

- increase living space with a secure outdoor area
- protection from insects while entertaining
- retain breezes and unhindered views.

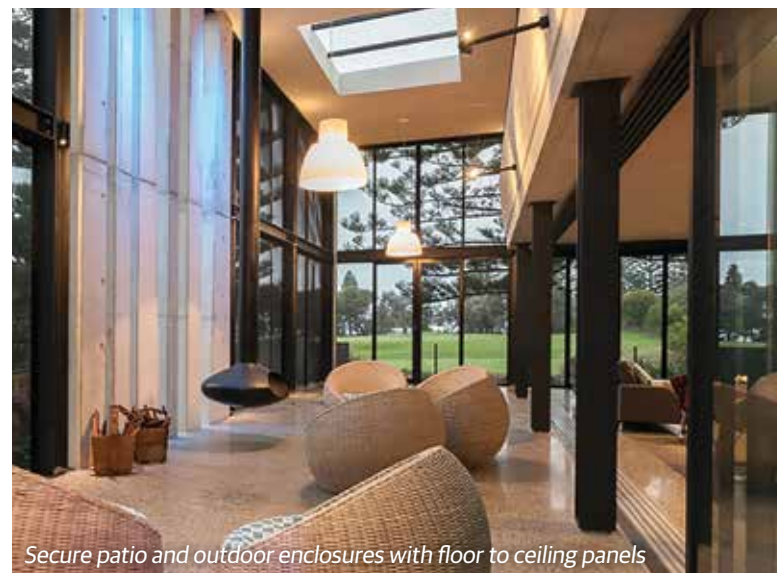
## Storage areas

Many apartment buildings provide residents with additional storage space, often in the carpark or basement.

These areas can be targets for thieves as they are often empty of people, but full of valuables.

Protecting storage areas with Crimsafe:

- keeps your possessions safe from theft
- allows airflow to prevent mildew and mould
- provides visibility through the mesh so intruders are more likely to be detected.



*Secure patio and outdoor enclosures with floor to ceiling panels*

# Crimsafe for apartments

## Garage security

Crimsafe panels can be used to enclose a parking space, protecting your vehicle and any other items stored in the area.

Crimsafe can be installed in angled panels or right angles, allowing you to completely enclose a garage space with walls and roof, providing:

- protection against break-in and theft
- protection from hailstones and storm debris.

## Pool fencing

Crimsafe provides an alternative to traditional pool fencing:

- a feeling of openness with unhindered views
- Crimsafe infill panels meet pool safety fencing requirements.

## Rooftop enclosures

Crimsafe can create a stunning rooftop entertainment area:

- clear and unhindered views
- airflow and breezes
- protection from falls
- insect protection.



*Crimsafe screens create a stunning option for outdoor pool enclosures, providing protection from UV rays while maintaining fresh air and spectacular views.*

# Safety, security and so much more

Crimsafe provides exceptionally strong security, and so much more, including the ability to enjoy through-breezes and unhindered views, as well as protection from heat and UV rays.

Crimsafe's strength also provides an effective barrier to prevent falls from windows or balconies, and protects your apartment from hail and wind-borne debris during storms.

## Strong security

Crimsafe's industry leading technology makes it the strongest stainless steel security screen system on the market.

That's no empty boast - Crimsafe has outperformed industry standards and competitor screens in independent university testing.

Read more about Crimsafe's strength and comparative test results on page 12.

## Fresh air and breezes

One of the greatest benefits of Crimsafe is the ability to enjoy a breeze and fresh air, without compromising your security.

This is especially valuable in apartments, which generally have limited outdoor areas and opportunities for a through-breeze.



*Crimsafe sliding doors protect bedrooms and living areas leading onto the balcony, allowing natural light and fresh breezes to flow through the apartment.*

# Safety, security and so much more

## Energy efficiency

The greatest heat gain, or loss in a home occurs through glass windows and doors. Crimsafe's Tensile-Tuff® stainless steel mesh:

- blocks up to 53% of solar heat gain
- blocks 62% of UV rays
- limits heat escaping during cold weather.

By helping to moderate the temperature inside your apartment, Crimsafe helps you enjoy fresh air and save on air conditioning bills.

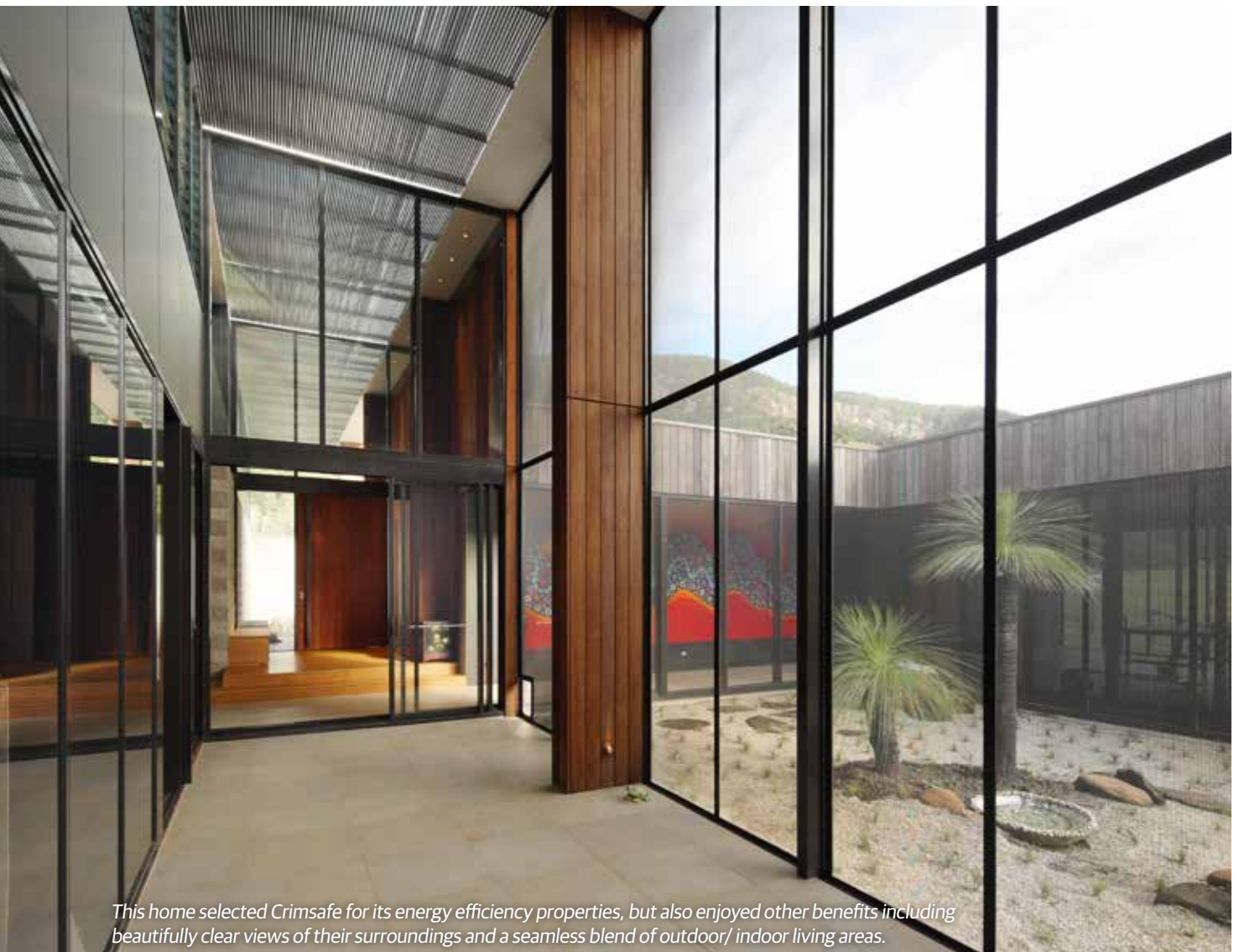
## Unhindered views

Crimsafe's strength comes from the unique combination of Tensile-Tuff® mesh and our Screw-Clamp™ fastening system – which means there is no need for bars and grilles.

The clean lines of powder-coated mesh provide unrestricted views and retain a feeling of open spaces.

## Insect protection

Fly screens are designed to keep out insects, but they certainly won't stop an intruder. Crimsafe does both – keeping out all intruders, even the smallest ones!



*This home selected Crimsafe for its energy efficiency properties, but also enjoyed other benefits including beautifully clear views of their surroundings and a seamless blend of outdoor/ indoor living areas.*





*Upper level balcony screens provide security and insect protection while retaining views and breezes*

## Fall protection from heights

Each year, more than 50 children fall from windows or balconies in Australia.

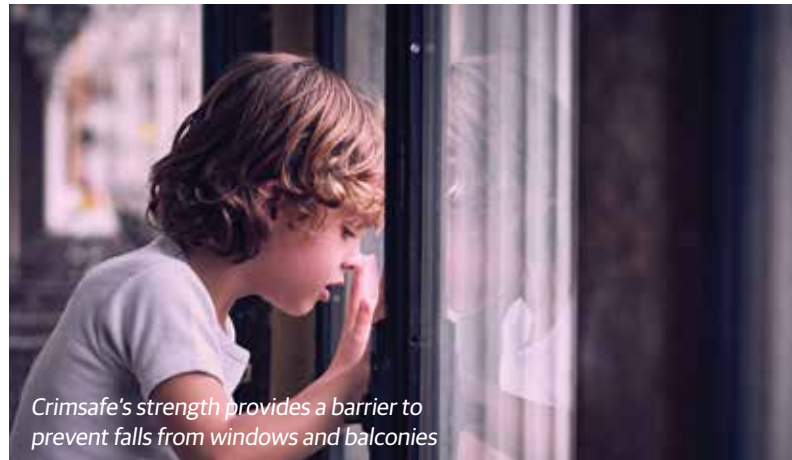
Crimsafe provides a strong and durable barrier to prevent falls, while still permitting you to confidently open your windows and balcony doors to enjoy a breeze.

## Hail protection

Crimsafe screens act as a strong barrier against hailstones and wind-borne debris during a storm, helping to protect glass windows and doors from breaking.

## Fire protection

Crimsafe screens block 59% of radiant flames and heat, slowing down the spread of fire from one floor to another, or to neighbouring buildings.



*Crimsafe's strength provides a barrier to prevent falls from windows and balconies*

## Extended warranty up to 15 years

Crimsafe is so confident in the strength, durability and quality of our product, we provide a standard 10 year warranty on all of our screens, plus extended warranty up to 12 years on Crimsafe Regular, and up to 15 years on Crimsafe Ultimate.



# Product range

Crimsafe is custom-made to measure and has a flexible range of installation options to suit every type of door and window opening:

- Hinged and sliding doors
- French doors
- Bi-fold doors
- Stacking doors
- Hinged and sliding windows
- Emergency exit windows (Safe-S-Capes®)
- Balcony balustrading
- Patio and outdoor enclosures
- Secure enclosures (e.g. storage areas)



*Hinged and French doors can open inward or outward, to suit the style of your home.*



*Sliding doors can have single, double or triple panels.*



*Stacking doors can open to the right or left, and each panel neatly stacks behind the other.*



*Bi-fold doors are hinged to fold neatly to one side in a concertina style.*



*Hinged windows can open inward or outward.*



*Sliding windows can have single, double or triple panels.*

## Emergency exits

Both hinged and sliding windows can be fitted with the one-touch release Safe-S-Cape® emergency exit system.

## Colour range

Crimsafe products come in a wide range of standard colours, with custom colours available on request. They are also available in woodgrain and anodised finishes so whatever your design preference, we have the products to enhance your home's décor.

*Colours are an indication only, as they may appear slightly different on paper or on screen to the actual powder coated colours.*

Marble Black Satin

Anodic Natural Matt

Apo Grey Satin

Classic Pearl White Gloss

Deep Ocean Satin

Dune Satin

Monument Matt

Paperbark Satin

Primrose Gloss

Surfmist Satin

Ultra Silver Gloss

White Birch Gloss

Woodland Grey Satin

## What is the difference between Crimsafe Ultimate and Regular?

We have two product ranges — Crimsafe Ultimate and Crimsafe Regular.

Crimsafe Regular is our original range and has set the standard in security screen strength and design. It continues to be the baseline for Crimsafe's commitment to exceptional quality and durability.

Crimsafe Ultimate takes our products to the next level of security, strength and style.

Crimsafe Ultimate uses more screws in the fastening system, making it 40% stronger\* than the Regular product. In addition, Ultimate features a clip-on cover that creates a smooth, architecturally designed look.



Crimsafe Ultimate

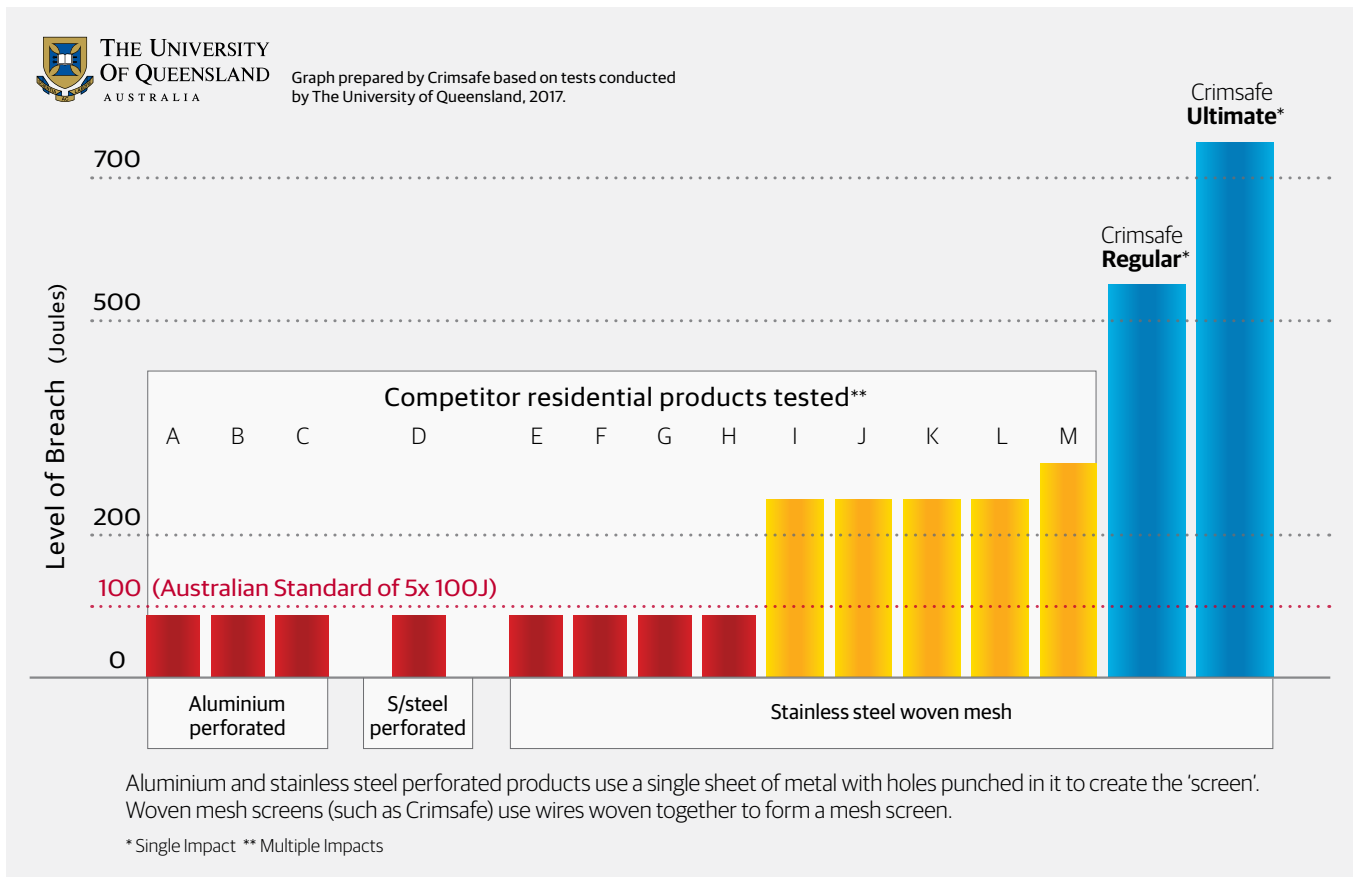


Crimsafe Regular

\* Based on independent testing by the University of Queensland.

# Crimsafe outperforms the rest

Independent university testing found that Crimsafe significantly outperformed competitor screens and the levels required by Australian Standards.



## Standards and performance levels explained

### Q: What is the Australian Standard?

A: Australian Standards for the security screen industry test the force of impact that a security screen can withstand, measured in 'Joules' – a unit of energy. To meet the standard, a security screen must withstand five single impacts of 100 Joules.

### Q: What does 100 Joules mean in a real-life example?

A: 100 Joules of energy is roughly equivalent to the impact of a young child running into a glass door.

### Q: Do all security screens pass the Australian Standard?

A: No. The University of Queensland study found that some screens failed the minimum standard required.

### Q: Is the Australian Standard adequate?

A: Crimsafe doesn't think so. The average adult male weighing 86kg can easily exert more than 100 Joules of force in a single impact. That's why Crimsafe is engineered to be much stronger than the minimum standard, and clearly stronger than competitor products on the market.

# What makes Crimsafe so strong?

Our customers expect the highest level of protection for their families which is why we don't compromise when it comes to the quality, strength and durability of Crimsafe doors and windows.

What makes Crimsafe outperform our competitors' products and exceed Australian standards?

## Thicker, stronger mesh

Our specially developed Crimsafe Tensile-Tuff® mesh uses 0.9mm 304 structural-grade stainless steel .

This means Crimsafe mesh is up to 26.5% thicker than most other mesh products on the market that use 0.8mm wire.

Crimsafe screens are harder to cut and penetrate, keeping out all unwelcome guests, from burglars to bugs.

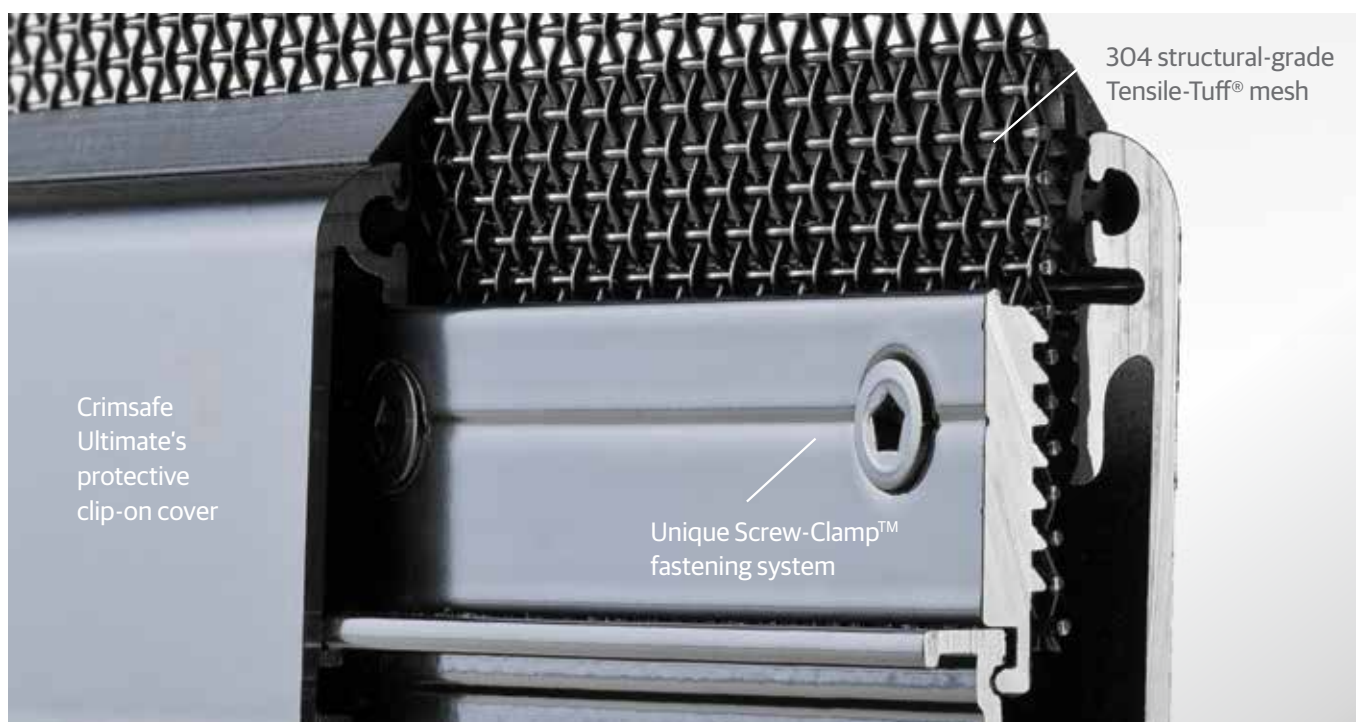
## Unique fastening system

We use Crimsafe's exclusive Screw-Clamp™ system to secure Tensile-Tuff® mesh to the frames, giving our security screens their exceptional strength.

These tamper-resistant screws and metal clamps hold the mesh in a vice-like grip in the frame, giving our screens their incredible strength. It is this unique system that allows Crimsafe screens to withstand tremendous force by absorbing and dispersing impact, strongly resisting being pulled out of the frame.

## Crimsafe Ultimate's protective cover

If you decide to install products from our Crimsafe Ultimate range - the new generation of Crimsafe - the snap-on cover and heavy-duty clamping system make these screens 40% stronger than our regular product. Crimsafe Ultimate is the next level in security screen strength and durability.



# Tried and tested

When it comes to stainless steel security screens, our technology is simply unparalleled. Numerous independent tests have verified that Crimsafe products exceed the highest safety standards and outperform when tested against competitor products.



## Security against break-in

Our unique tamper-resistant Screw-Clamp™ system and Tensile-Tuff® mesh are the key to Crimsafe's exceptional strength.

Our products undergo stringent testing including simulating the force of a kick, punch or charge, and using screwdrivers and other tools in an attempt to leverage frames, locks and hinges apart.



## Energy efficient

Our security screens will help keep your home warm in winter and cool in summer. Crimsafe screens improve the energy rating of glass windows and doors, up to 4.5 stars cooling and up to 3 stars heating (ratings provided by the Window Energy Rating Scheme (WERS)).



## Fall prevention

Crimsafe's strength and durability keep your family safe by preventing falls from windows and balconies. Our screens meet building construction requirements for child protection of openable windows, providing safety without compromising your ability to open the window fully.



## Fire resistance

Crimsafe's fire attenuation properties block floating embers, protect glass from the impact of burning debris, and reduce the intensity of radiant heat and naked flames by up to 59%. This can help to slow down and prevent the spread of fire, giving you valuable time to get to safety. We use metal fastenings in all our screens ensuring the mesh won't break out of the frame if a burning tree limb falls against a window or door.



## Cyclone and storm protection

Crimsafe protects your home against severe storms and tropical cyclones. Our Cyclone Debris Screens pass the highest levels for cyclone debris screening in regions C and D.

Our high-tensile stainless-steel mesh screens can also protect glass windows and doors from hailstones and other flying debris during storms.



## Corrosion resistance

Because Crimsafe security screens are made from stainless steel they are corrosion resistant and built to endure the harshest of environments.

Crimsafe has been tested to withstand 3,000 hours in a Prohesion Accelerated cyclic test. Alternating salt spray and dry cycles, the test simulates the equivalent to 30 years of environmental exposure.



## Insect protection

Crimsafe lets you enjoy fresh air while keeping out any unwanted pests and insects. Tests have shown that our Tensile-Tuff® security mesh prevents 99% of mosquitoes from passing through.



## About Crimsafe

At Crimsafe, we believe that when it comes to the safety of you and your family, there should be no compromise.

More than two decades ago we revolutionised the security screen industry and we are continuing to do so.

We are so confident in the strength and durability of our products that we frequently carry out independent testing. We've put Crimsafe products through their paces and they consistently exceed industry standards and outperform our competitors.

That's why if it's not Crimsafe, it's not crim safe.

Crimsafe has many imitators, and many claim to be 'Crimsafe equivalent'. But, there is no equivalent.

So when it comes to the safety of your loved ones insist on the best, insist on Crimsafe.

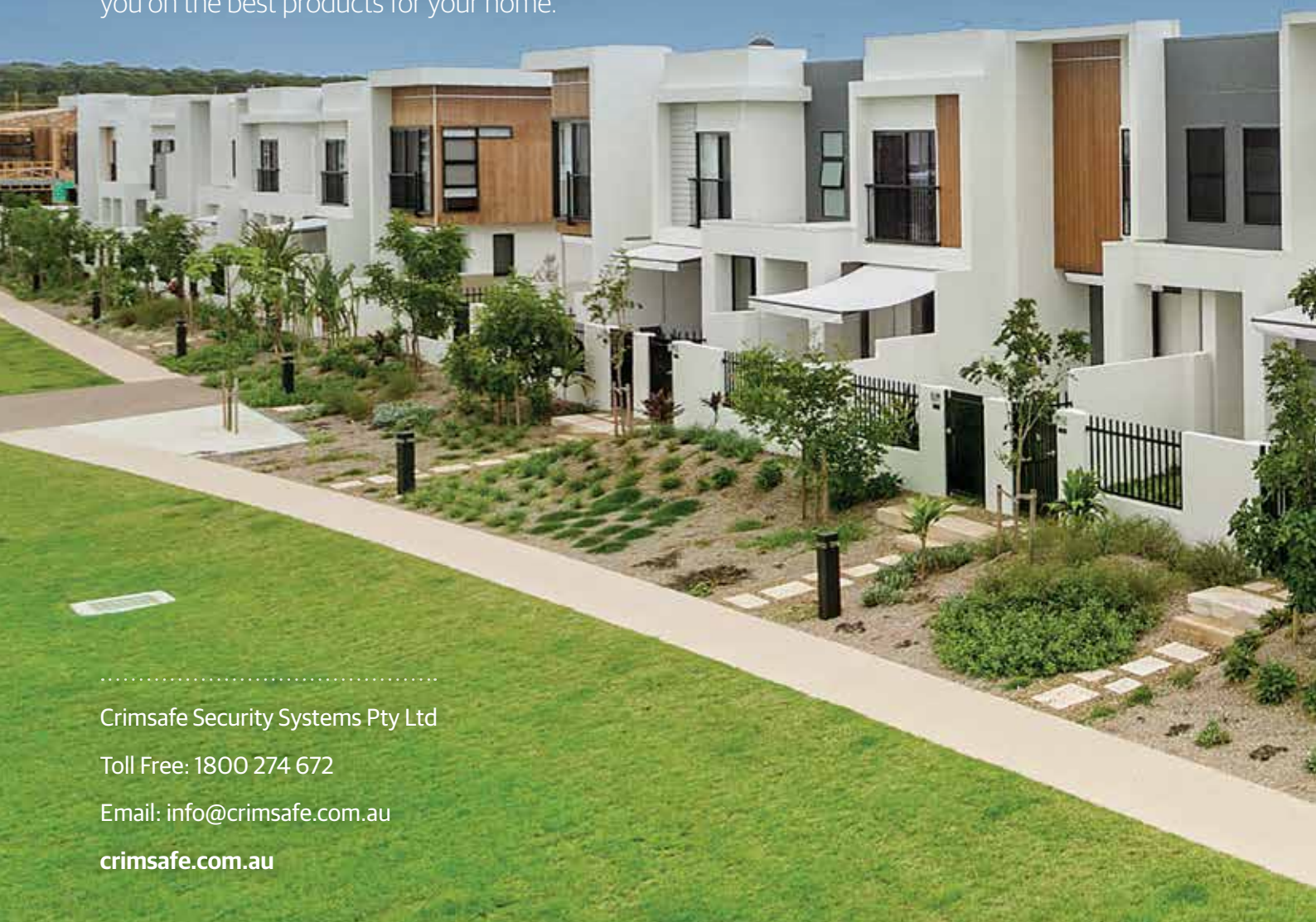


# Contact one of our Authorised Licensees

At Crimsafe, we understand that a superior product correctly installed is a safer product. That's why only Crimsafe Authorised Licensees can supply and install genuine Crimsafe products.

Our Licensees are highly trained professionals with the knowledge and expertise to create a safe and secure environment for you and your family.

Visit the Crimsafe website to find your nearest Authorised Crimsafe Licensee who can advise you on the best products for your home.



Crimsafe Security Systems Pty Ltd

Toll Free: 1800 274 672

Email: [info@crimsafe.com.au](mailto:info@crimsafe.com.au)

[crimsafe.com.au](http://crimsafe.com.au)

Crimsafe proudly partners with:

