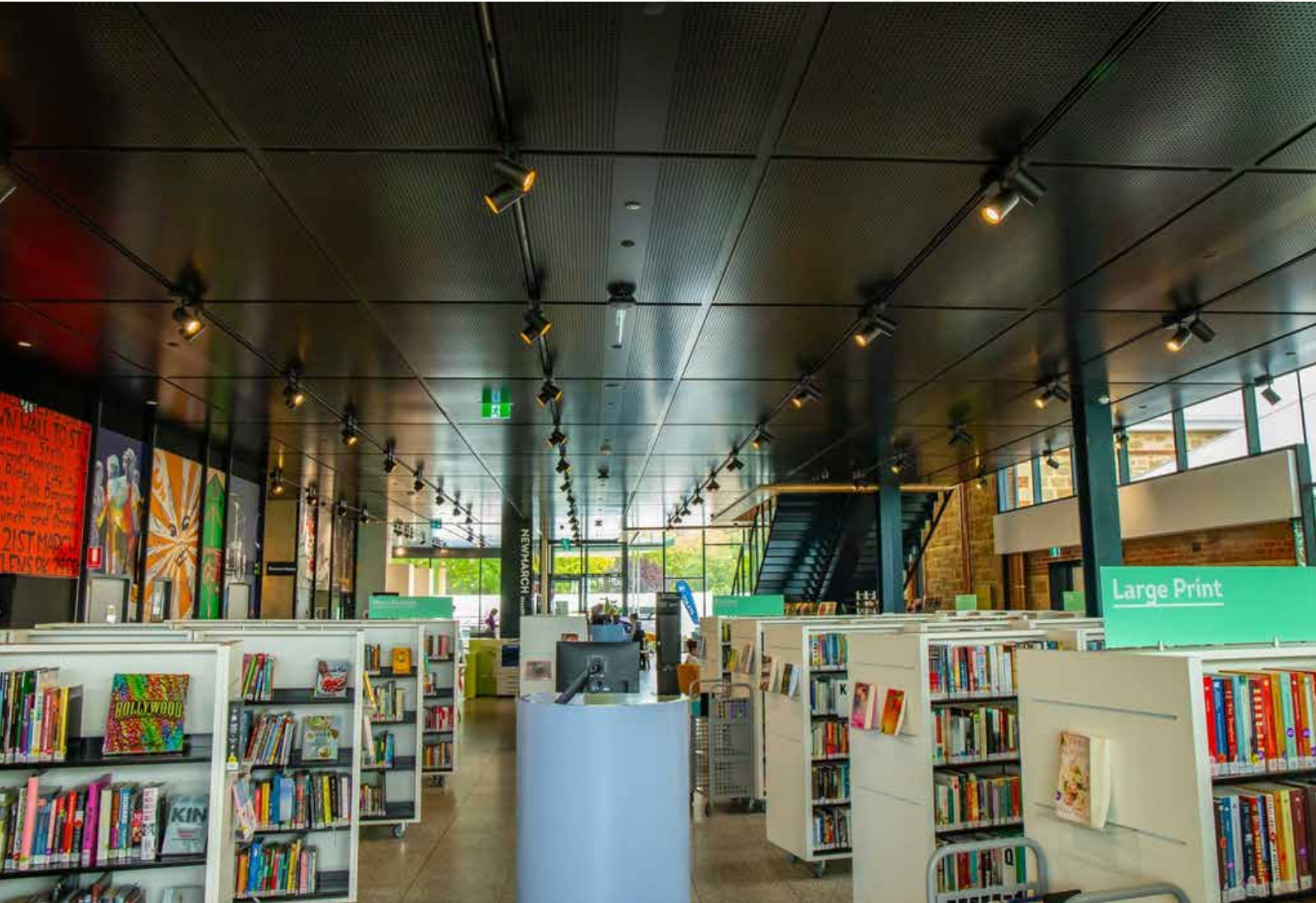


# KEY-LENA



**KEYSTONE**  
LININGS & ACOUSTICS

A graphic element consisting of a grid of blue dots of varying sizes, arranged in a pattern that suggests a circular or semi-circular shape, positioned to the right of the company name.

*We bring Architects Imagination to Life*

[www.KeystoneLinings.com.au](http://www.KeystoneLinings.com.au)

## KEY-LENA

TIMBER VENEER OPTIONS



For an extensive range of natural timber veneers, consult KEYSTONE LININGS.



EUROPEAN BIRCH



EUROPEAN BEECH



HOOP PINE



AMERICAN OAK



AMERICAN  
CHERRY



VICTORIAN ASH



TASMANIAN OAK



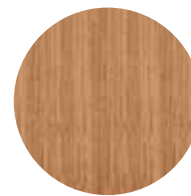
TASMANIAN  
MYRTLE



GREY IRONBARK



ROCK MAPLE



BLACKBUTT



JARRAH



FIGURED  
SYCAMORE



WHITE  
SYCAMORE



SPOTTED GUM





Ecosciences Precinct, Brisbane, QLD

# KEY-LENA

## VISUAL FINISH & DECORATIVE OPTIONS

### KEY-DYE

#### STAIN OPTIONS



EBONY STAIN



BLACKBUTT STAIN



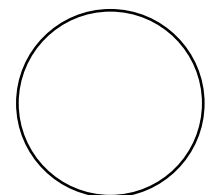
SPOTTED GUM STAIN



JARRAH STAIN



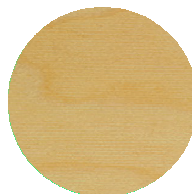
WALNUT STAIN



WHITEWASH

### KEY-TONE

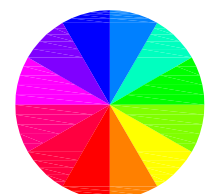
#### CLEAR COAT FINISH OPTIONS



10-20% MATT



20-40% SATIN



MATCHED TO ANY COLOUR OF PREFERENCE

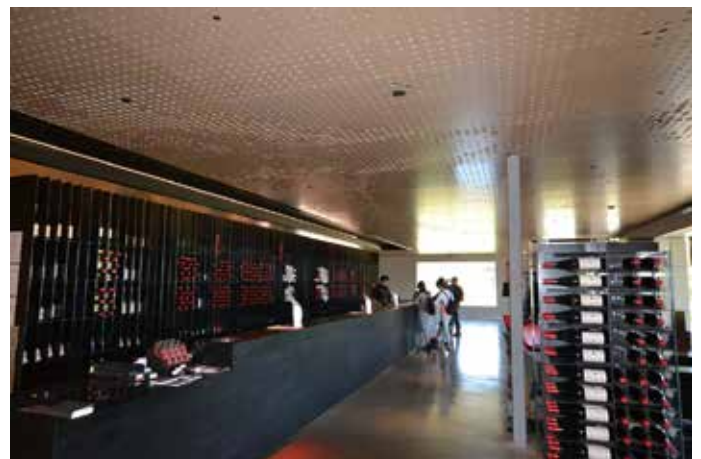
THE LAKES HOTEL



UNISA PRIDHAM HALL



PENFOLDS MAGILL ESTATE





ADELAIDE BOTANIC HIGH SCHOOL, ADELAIDE



PROSPECT PUBLIC LIBRARY



GRANT THORNTON OFFICE





Level 1, 7-8 Davis Road,  
Wetherill Park, NSW 2164  
02 9604 8813  
[www.KeystoneLinings.com.au](http://www.KeystoneLinings.com.au)