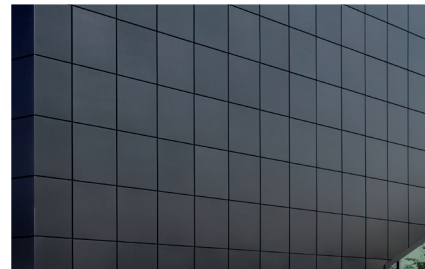
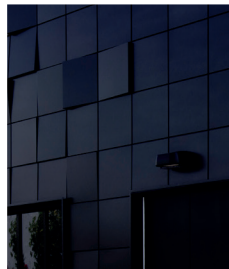


KS1100KP KARRIER Wall Panel Installation Guide

Vertically Laid



KS1100KP Karrier Wall Panel

Vertically Laid

Components

KS1100KP Karrier Wall Panel



Galvanised
ledger angle



Panel clamp



Use panel clamps to ensure full engagement of panel joint when required

Primary Fastener
(Carbon Steel)
(Not by Kingspan)



Butyl Nylon Tape
(Applied over galvanised steel recessed spreader plate)
(code:SEXT501)



6x4mm butyl
tape sealant
(Code: SEXT)



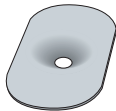
Fire rated
canister foam
(Not by Kingspan)



External corner
flashing



Recessed Washer
(Galvanised Steel)
(Not by Kingspan)



Pre-core panel
if using recessed
washer



Low profile
fasteners
(Carbon Steel)
(Not by Kingspan)



Compressible
PVC foam tape
(Not by Kingspan)



Neutral cure gun-
grade sealant
(Not by Kingspan)



Drip flashing



This installation guide should be read in conjunction with the 'project specific' design drawings and method statements.

Although this 'installation guide' is deemed to be correct at the time of publication, Kingspan Façades reserve the right to amend the information at any time in the future. Installation Guides are available for the full range of Kingspan Insulated Roof, Wall and Façade Systems.

KS1100KP Karrier Wall Panel

Vertically Laid

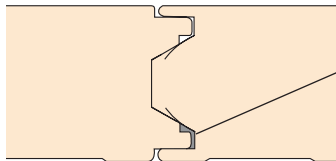
Note:

- Ensure steelwork is suitably lined, levelled and within tolerance.
- All fasteners to be carbon steel, class 4 to maintain panel warranty.
- Neutral cure gun-grade sealant is referred to as – gun-grade butyl sealant.
- All sealants to suit project specification requirements.
- Minimum bearing face for intermediate support is 50mm. All subject to required number of primary panel fasteners and wind loads
- Number of fasteners must be calculated based on project spans, wind loads and rainscreen load
- Ensure panel joints are pulled tight to adjacent panels to close any gaps as works progress.
- This installation guide provides generic guidance on installation methods, however, should be read in conjunction with project specific specifications and construction details.
- Install fasteners with recommended screw gun speed selection for type of steel, use correct socket and drive bit, including depth - locating nose piece, unless fastener has feature to prevent overdriving, in line with fastener manufacturers.
- Use panel clamps to ensure full engagement of panel joint when required.
- Protective film to be removed from external weather face of panel & internal liner where applicable prior to installation.
- Clean swarf off panels immediately when created.

Site Applied Weather Seals

Continuous bead (approx. 7mm) to be site applied in the female joint on the external face side.

Internal Face



Continuous site applied neutral cure gun-grade butyl seal in the external female joint to provide an air and weather seal

External Face

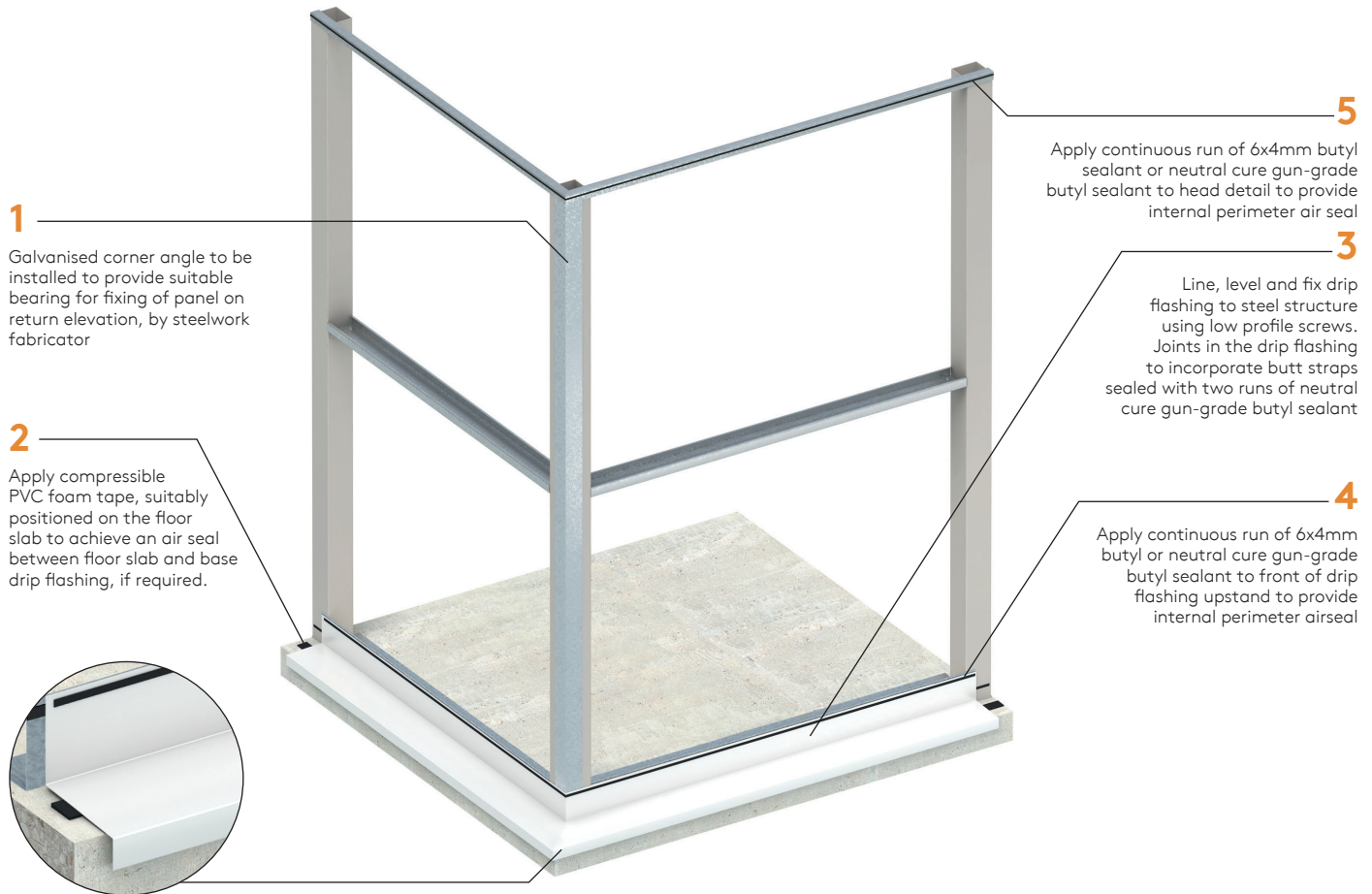


Please contact Kingspan Technical Services Department for guidance:

- Internal air seals
- High humidity & hygiene internal environment
- Project specific advise

KS1100KP Karrier Wall Panel

Vertically Laid



KS1100KP Karrier Wall Panel

Vertically Laid

Note: Some installations may require additional fasteners depending on wind loadings / specification. Check project specific details

6
Apply a continuous run of 6x4mm butyl or neutral cure gun-grade butyl sealant to each side of galvanised corner angle ensuring it meets the previously installed air seals at head and base

7
Locate first panel (**P1**) ensuring it is correctly positioned lined and levelled and a minimum of 5mm off the drip flashing at the back as illustrated

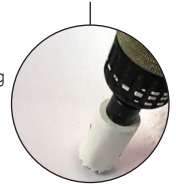


Fix galvanised ledger angle through drip flashing and into base support angle using low profile screws



8
Install 3No. primary fasteners with recessed washer, to each horizontal steel support (minimum)

Pre-core panel prior to installing recessed washer



Apply butyl nylon tape patch over recessed washer



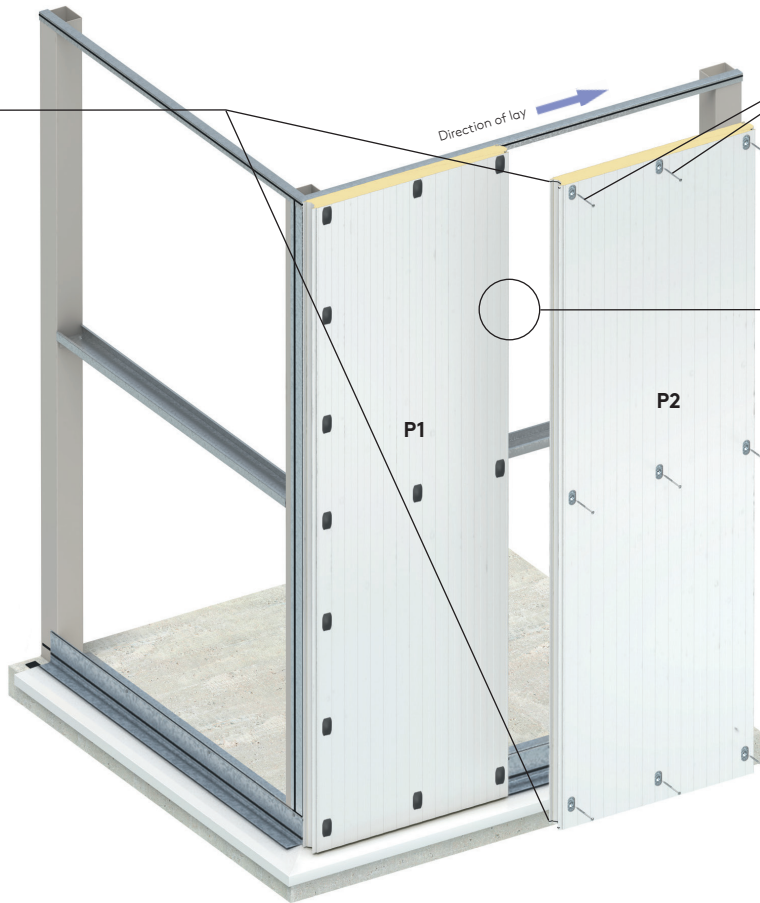
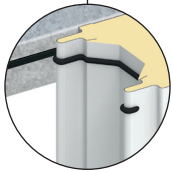
9
At corner positions, fix primary fasteners with recessed washer, at 450mm max centres (applicable at window and door jambs)

KS1100KP Karrier Wall Panel

Vertically Laid

10

Run a neutral cure gun-grade butyl air seal across the male joint at panel ends ensuring it meets previously installed air seal



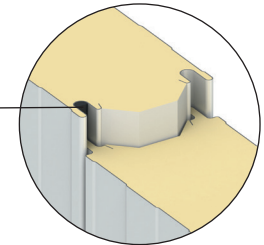
12

Locate next panel (**P2**) into position. Ensure it is lined and levelled correctly in line with adjacent panel (minimum of 5mm off the drip flashing at the back). Install min. 3No. Primary fasteners with recessed washer approximately 50mm in from vertical panel joint to each horizontal support member (Minimum).

11

Run a continuous site applied neutral cure gun-grade butyl sealant in the external female joint to provide an air and weather seal

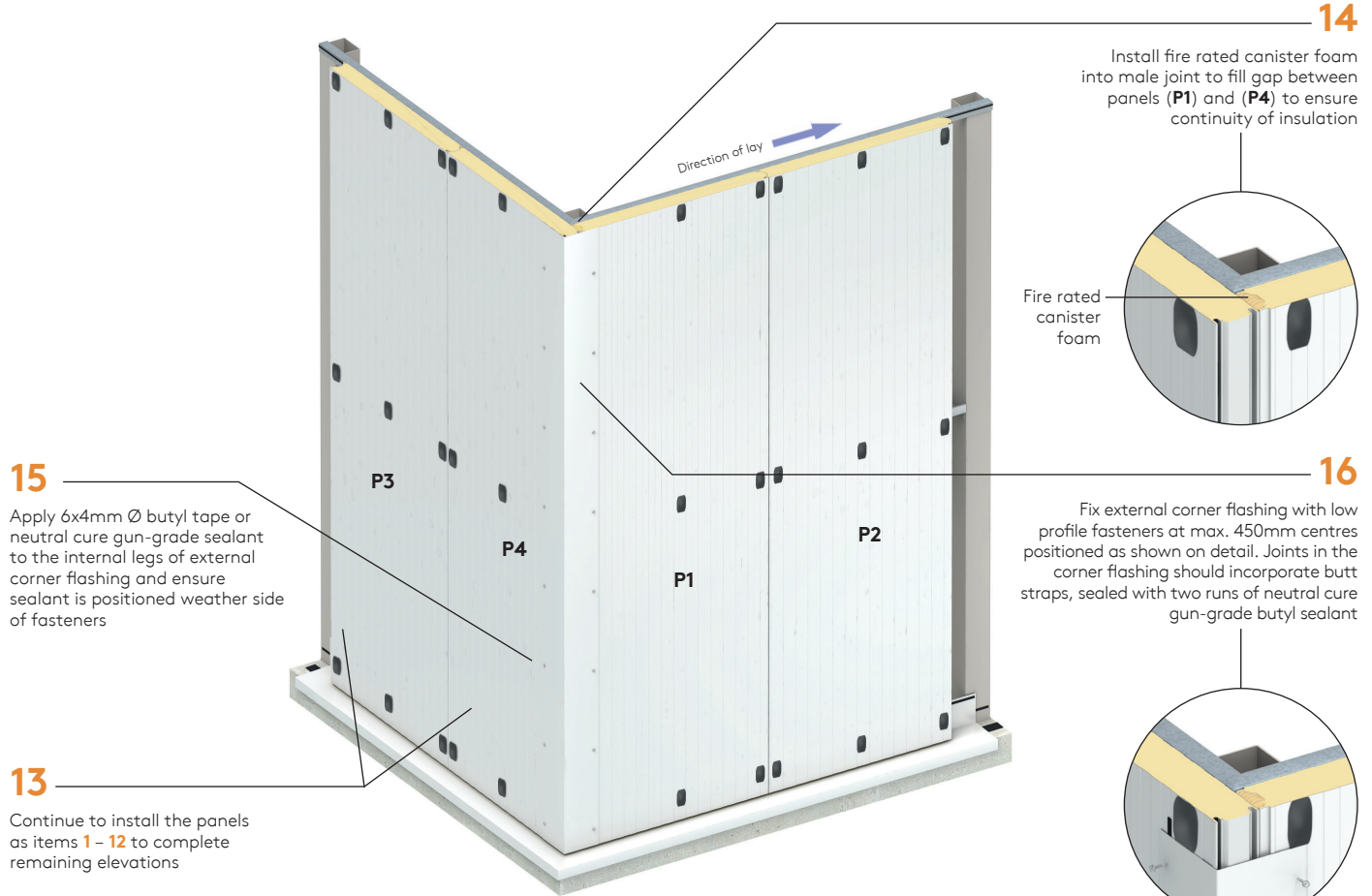
Continuous neutral cure gun-grade butyl sealant



Panel Joint Seals

KS1100KP Karrier Wall Panel

Vertically Laid



14

Install fire rated canister foam into male joint to fill gap between panels (P1) and (P4) to ensure continuity of insulation

Fire rated canister foam

16

Fix external corner flashing with low profile fasteners at max. 450mm centres positioned as shown on detail. Joints in the corner flashing should incorporate butt straps, sealed with two runs of neutral cure gun-grade butyl sealant

15

Apply 6x4mm Ø butyl tape or neutral cure gun-grade sealant to the internal legs of external corner flashing and ensure sealant is positioned weather side of fasteners

13

Continue to install the panels as items 1 – 12 to complete remaining elevations

KS1100KP Karrier Wall Panel

Vertically Laid



Panel Handling

Appropriate personnel protective equipment should always be worn to avoid cuts and abrasions to installers and panels.

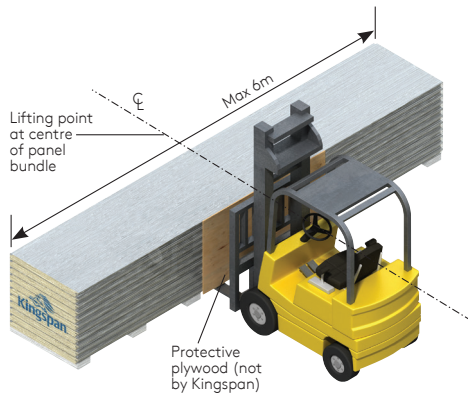
Individual panels should always be lifted from a pack and not dragged over others.

The weight of individual panels for lifting can be determined from the information on the packing slip.

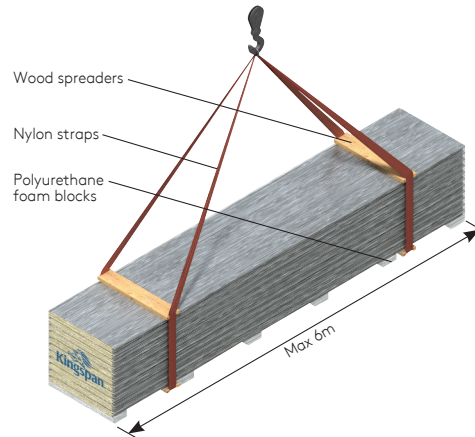
For larger panels the contractor would normally arrange to use appropriate material installation equipment to help lift the panels into position.

Protecting Film

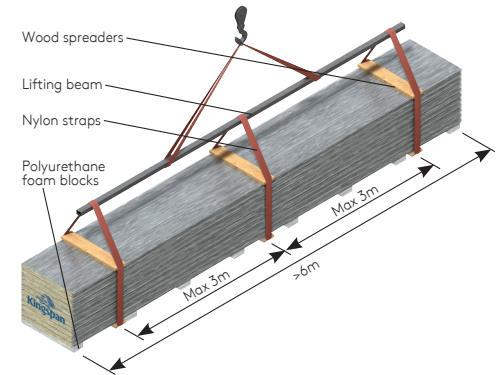
When panels are supplied with a plastic protective film this should be removed during site installation.



The recommended loading / unloading method for bundles less than or equal to 6m is to use a single forklift with widely spaced forks placed under the centre of the bundle as shown.



The recommended lifting method for bundles no more than or equal to 6m can be handled with a crane by using nylon straps and wood spreaders as shown.



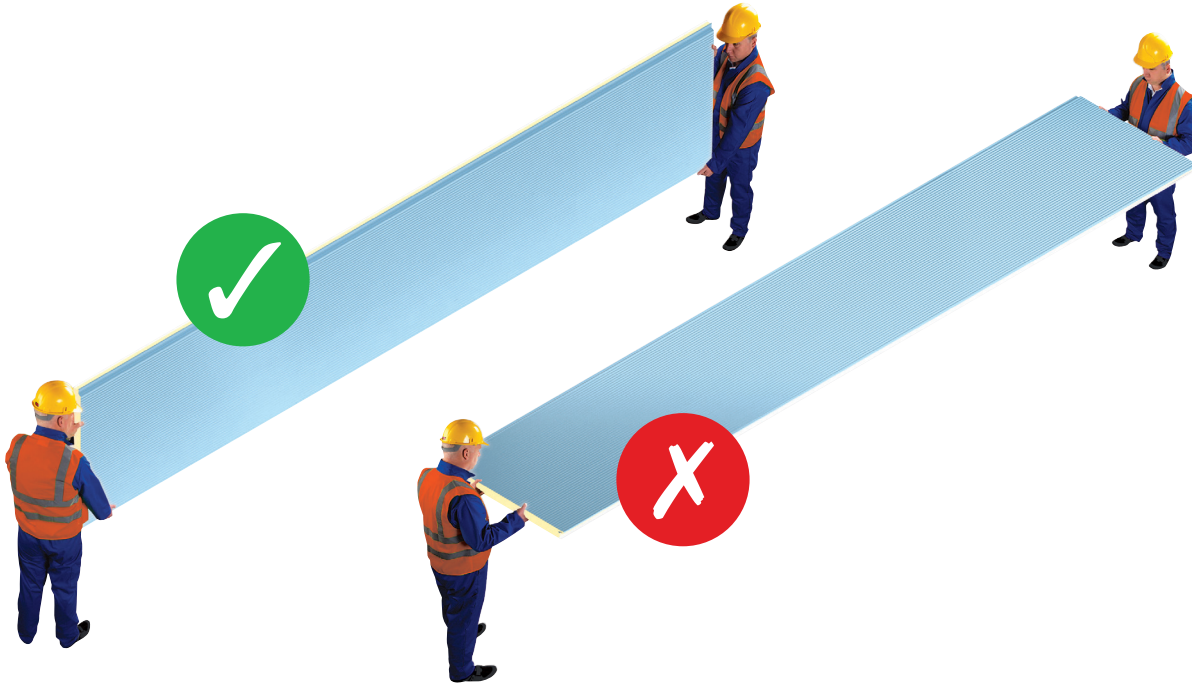
The recommended lifting method for bundles more than 6m, by crane, is by using three points of support. To prevent damage from nylon straps, use wood spreaders at top and bottom at lifting locations as shown.

Panel Handling

Correct and Incorrect Panel Handling

Caution

Individual panels should never be moved in a flat position as excessive flexing may result. Excessive flexing ruptures a panel's core, permanently distorts the facings and may lead to thermal blistering. When moving a panel, it must be turned on its edge first, then supported at each end with as many men as necessary to safely handle.



Installation guides are available for most of Kingspan insulated roof and wall panels.
For the most up to date version of this Installation guide please [click here](#) or scan the QR code below. Alternatively, please call Kingspan on:

AUS: +61 2 8889 3000
www.kingspanpanels.com.au



For the product offering in other markets please contact your local sales representative or visit www.kingspanpanels.com

Care has been taken to ensure that the contents of this publication are accurate, but Kingspan Insulated Panels and its subsidiary companies do not accept responsibility for errors or for information that is found to be misleading. Suggestions for, or description of, the end use or application of products or methods of working are for information only and Kingspan Insulated Panels and its subsidiaries accept no liability in respect thereof.

