

**Definium<sup>®</sup>**  
**Suite**  
**Defining Bold**  
**Spaces**

# Definium® Suite

---

Criterion's Definium Suite offers a 50mm reveal presenting a bold, flexible and defined internal wall solution.

A fully integrated partitioning system that complies with glazing and disabled requirements, the Definium Suite combines consistent design throughout plasterboard walls, windows and door frames. This Suite includes centre, offset and double glazing options. The carefully designed and engineered heavy duty door frame, with three point fixing design, ensures door jambs withstand high levels of activity and remain maintenance free.

The Definium Suite has been used in many projects throughout Australia providing extraordinary acoustic possibilities and complies with the following codes and Australian Standards;

- AS1428 -2010 Access and Mobility Code. Definium meets the stipulated requirements that all doorways must have a minimum width of 50mm between door leaf and door jamb, giving you scope to achieve the required 30% luminance contrast area.
- AS1288 - 2006 Glazing Code for 12 - 15mm glass thickness. Conforms with the specified edge clearance, edge cover and rebate depth requirements for minimum glazing dimensions, as noted on table 8.1 of the glazing code.

Take a look inside and discover the Definium Suite that 'defines bold spaces'.



# Definium® 90

Defining bold spaces.

The Definium 90 Suite incorporates 64mm studs and 13mm plasterboard. This bold aluminium suite offers an array of design possibilities with two glazing options; centre and offset glazed. The two glazing options are interchangeable and can also work in conjunction with selected Platinum and Linium sections. Definium 90 has been designed for ultimate performance and simple installation.

### Features of the Definium 90

- Variety of acoustic possibilities
- Two plasterboard options:
  - 1) 64mm studs with a single layer of 13mm plasterboard on either side of the stud, or
  - 2) 51mm studs with a double layer of 13mm plasterboard on one side of the stud and a single layer on the other
- Glazing pocket suits up to 15mm thick glass
- Door Stop options allow for 38mm or 44mm doors
- Glazing pocket accepts

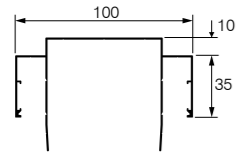
either rubber or silicone glazing options

- Window/Door Frames accommodate gussets providing enhanced joining capabilities

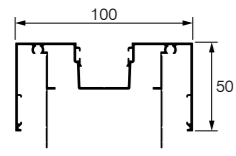


# Definium® 90

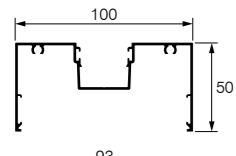
To suit 64mm Studs



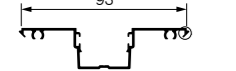
Ceiling Channel  
CI-2511



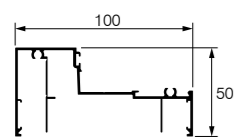
Door Frame  
CI-2520  
(50mm Reveal)



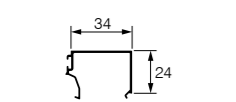
Window Frame  
CI-2530  
(50mm Reveal)



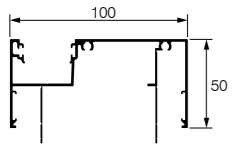
Glazing Adaptor  
CI-2540



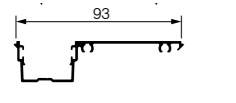
Window Sill  
CI-2550  
(50mm Reveal)



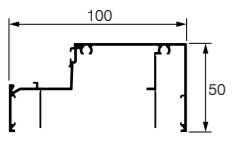
Sill Bead  
CI-2551  
(Suits CI-2550)



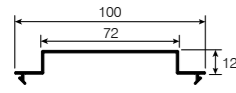
Offset Frame  
CI-2533  
(50mm Reveal)



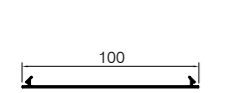
Offset Glazing Adaptor  
CI-2543



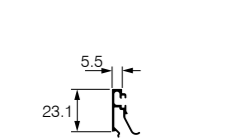
Offset Glazing Sill  
CI-2553  
(50mm Reveal)



Shadowline Adaptor  
CI-2215



Flat Filler  
CI-2244



Offset and Double Glazing Bead  
CI-4556



Pocket Filler  
CI-4560



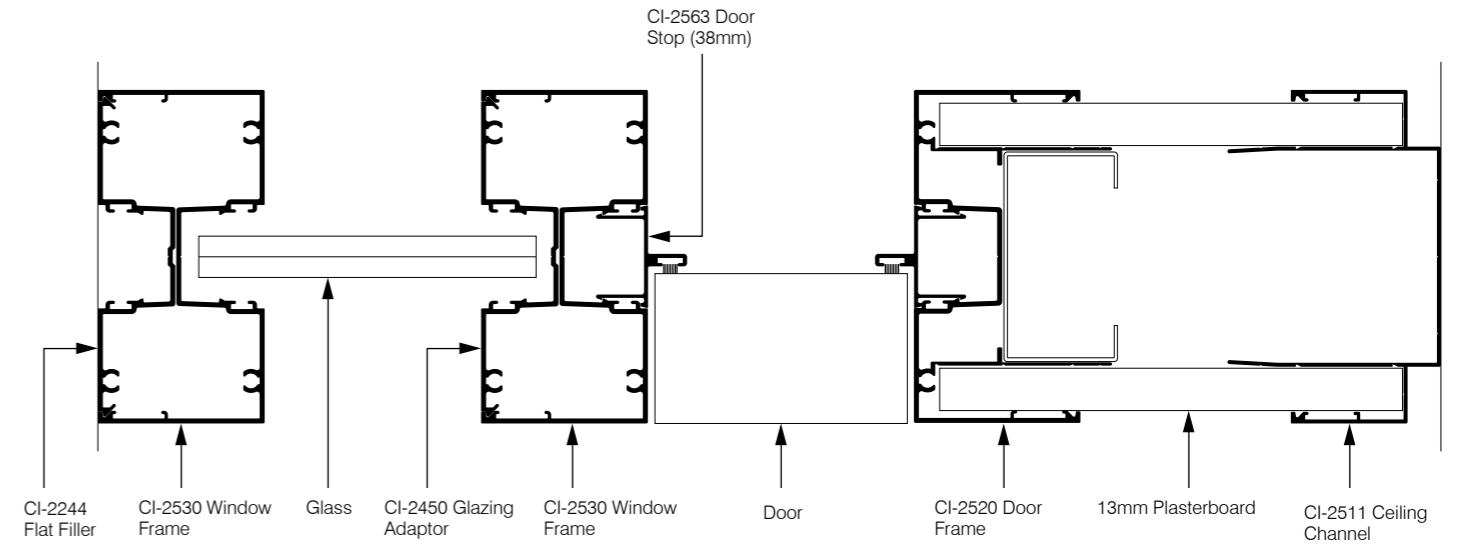
44mm Door Stop  
CI-2563



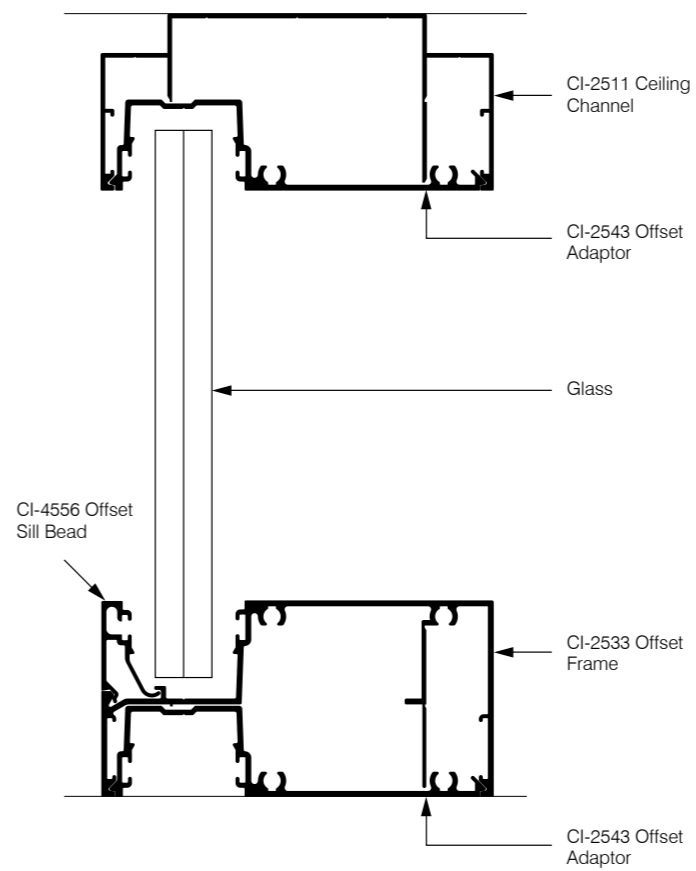
38mm Door Stop  
CI-2562

# Definium® 90

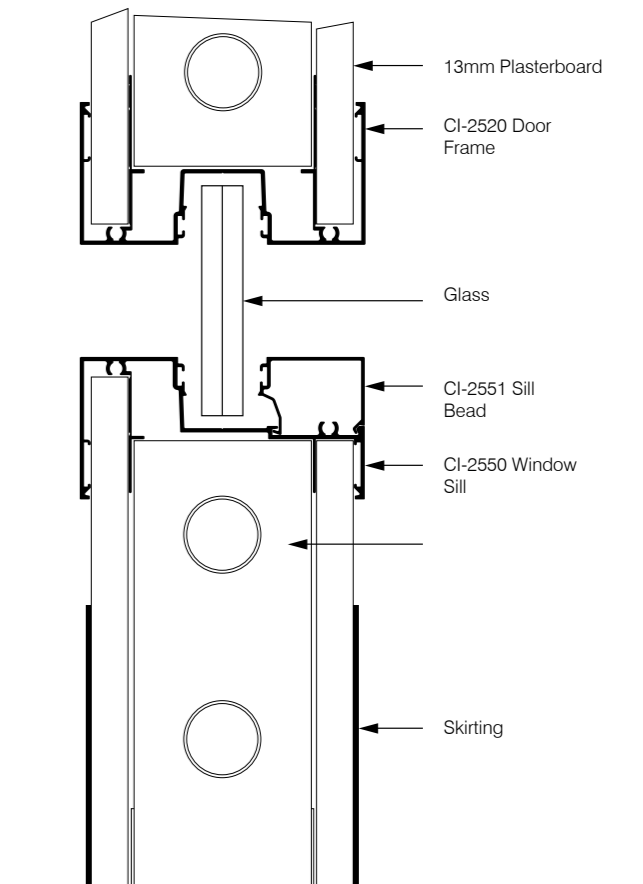
## Plan View



## Offset Glazing Elevation



## Centre Glazing Elevation





# Definium® 105

Defining bold spaces.

The Definium 105 Suite incorporates 76mm studs and 13mm plasterboard. This bold aluminium suite offers a range of design opportunities with two glazing options; centre and offset glazing. Especially used in high traffic areas where a more heavy duty suite is required.

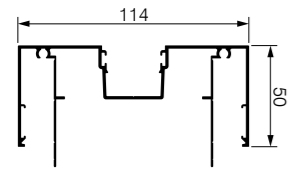
## Features of the Definium 105

- Provides three plasterboard options:
  - 1) 76mm studs with a single layer of 13mm plasterboard on either side of the stud,
  - 2) 64mm studs with a double layer of 13mm plasterboard on one side of the stud and a single layer on the other, or
  - 3) 51mm studs with a double layer of 13mm plasterboard on either side of the stud
- Glazing pocket designed for up to 15mm thick glass
- Door Stop options allow for 35mm, 38mm or 44mm doors
- Glazing pocket accepts either rubber or silicone glazing options

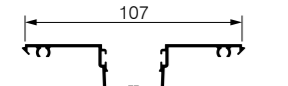


# Definium® 105

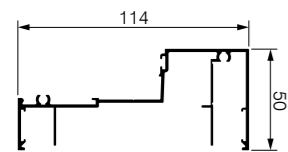
To suit 76mm Studs



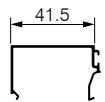
CI-3520 Door Frame



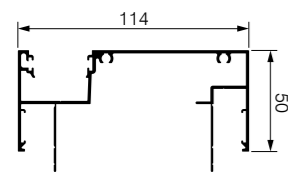
CI-3540 Glazing Adaptor



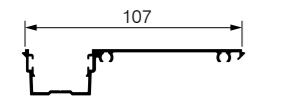
CI-3550 Window Sill



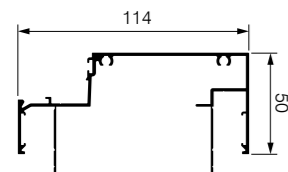
CI-3551 Sill Bead



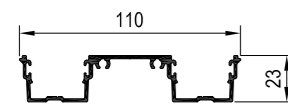
CI-3533 Offset Glazing Frame



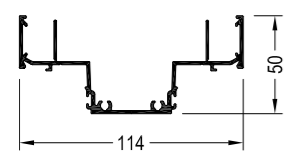
CI-3543 Offset Glazing Adaptor



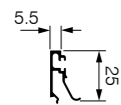
CI-3553 Offset Glazing Sill



CI-3542 Double Glazing Adaptor



CI-3552 Double Glazing Sill



CI-4556 Offset Sill Bead



CI-4560 Pocket Filler



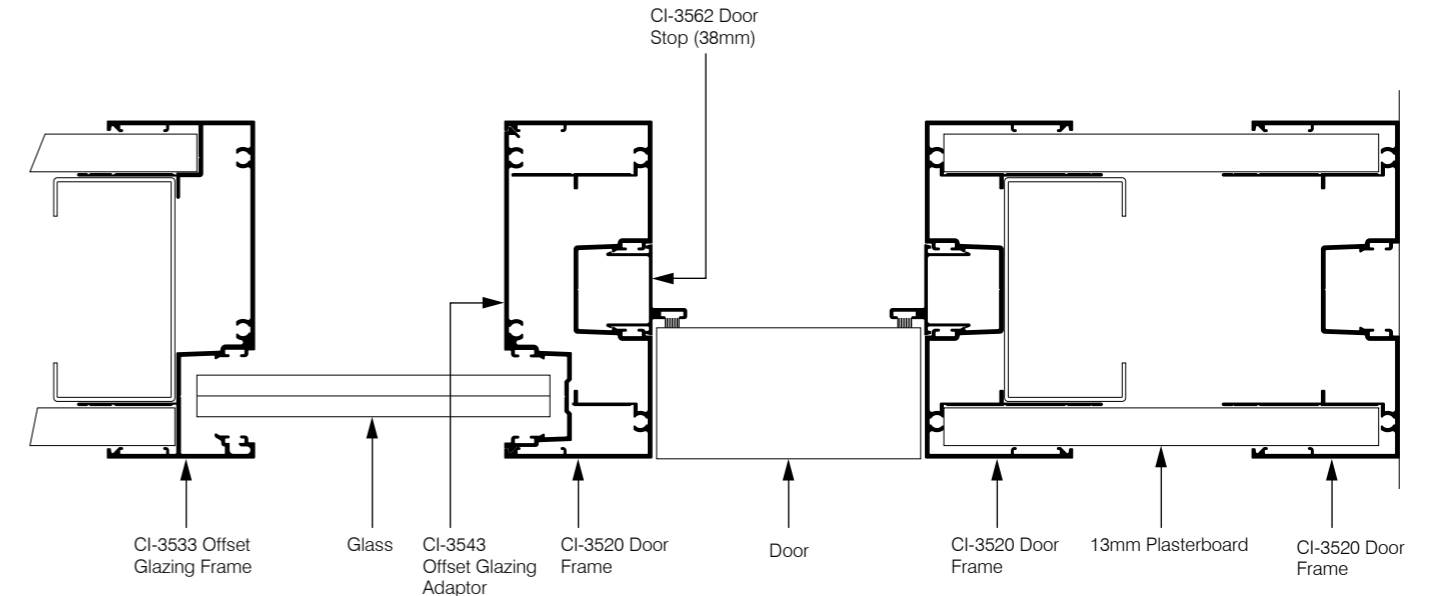
CI-3562 Door Stop (38mm)



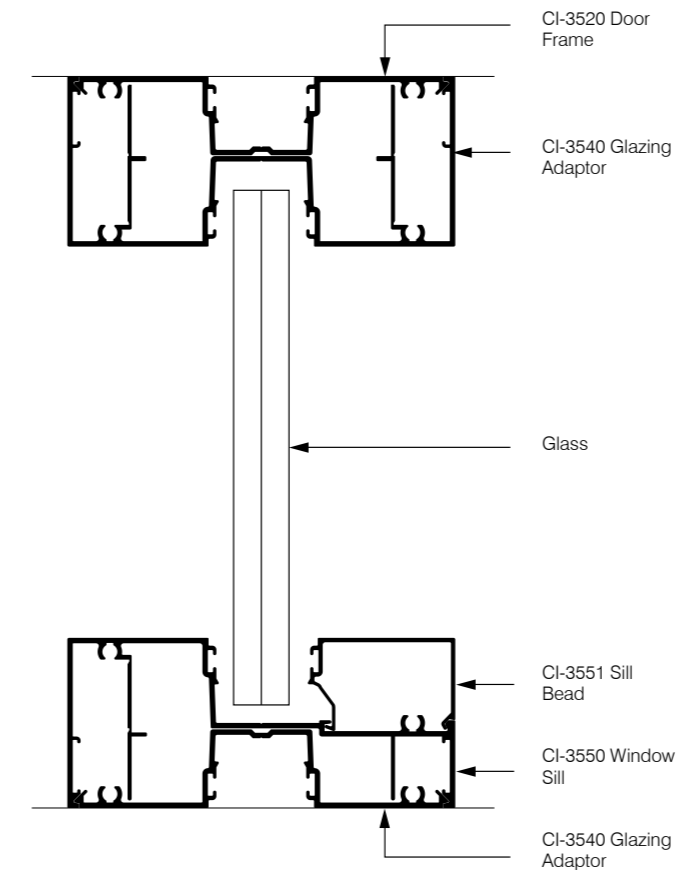
CI-4561 Door Stop (44mm)

# Definium® 105

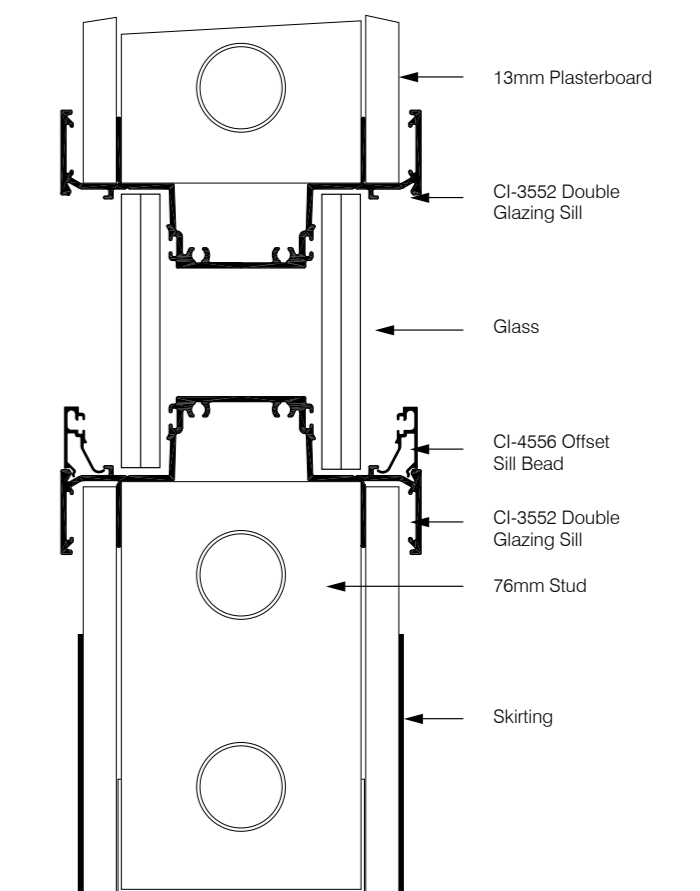
## Plan View



## Centre Glazing Elevation



## Double Glazing Elevation



# Definium® 120

Defining bold spaces.

The Definium 120 Suite incorporates 92mm stud and 13mm plasterboard. This robust aluminum suite provides a multitude of possibilities, designed and engineered to achieve your vision with three glazing options; centre, offset and double glazed. All three glazing options are interchangeable and can also work in conjunction with selected Platinum sections. Definium 120 Suite has been designed with precision for

ultimate performance and installation efficiency.

#### Features of the Definium 120

- Superior acoustic performance
- Estimated sound rating for solid plasterboard walls:
  - RW 44 (with CAB4 Polyester Insulation)
  - RW 51 (with Criterion Acoustic Batt 14kg/m<sup>3</sup>, 1 layer of acoustic plasterboard either side of staggered stud)

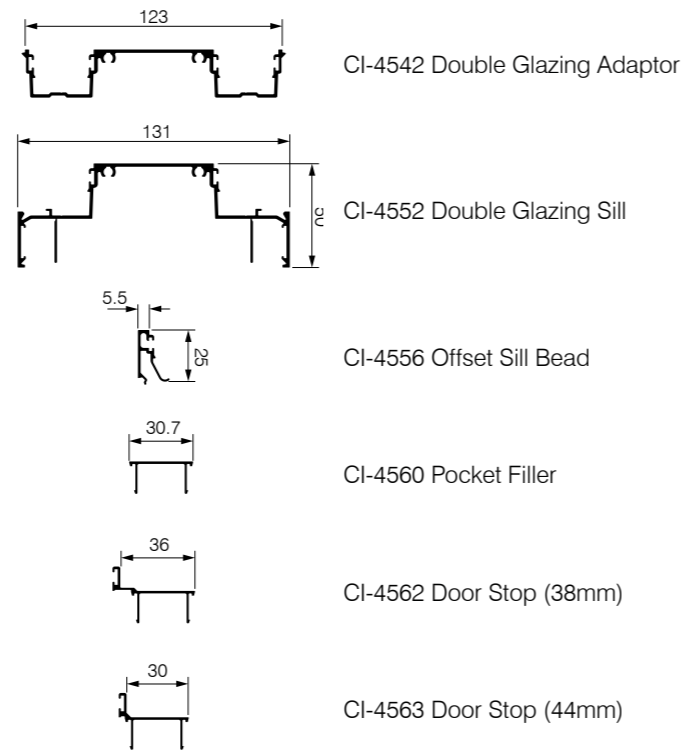
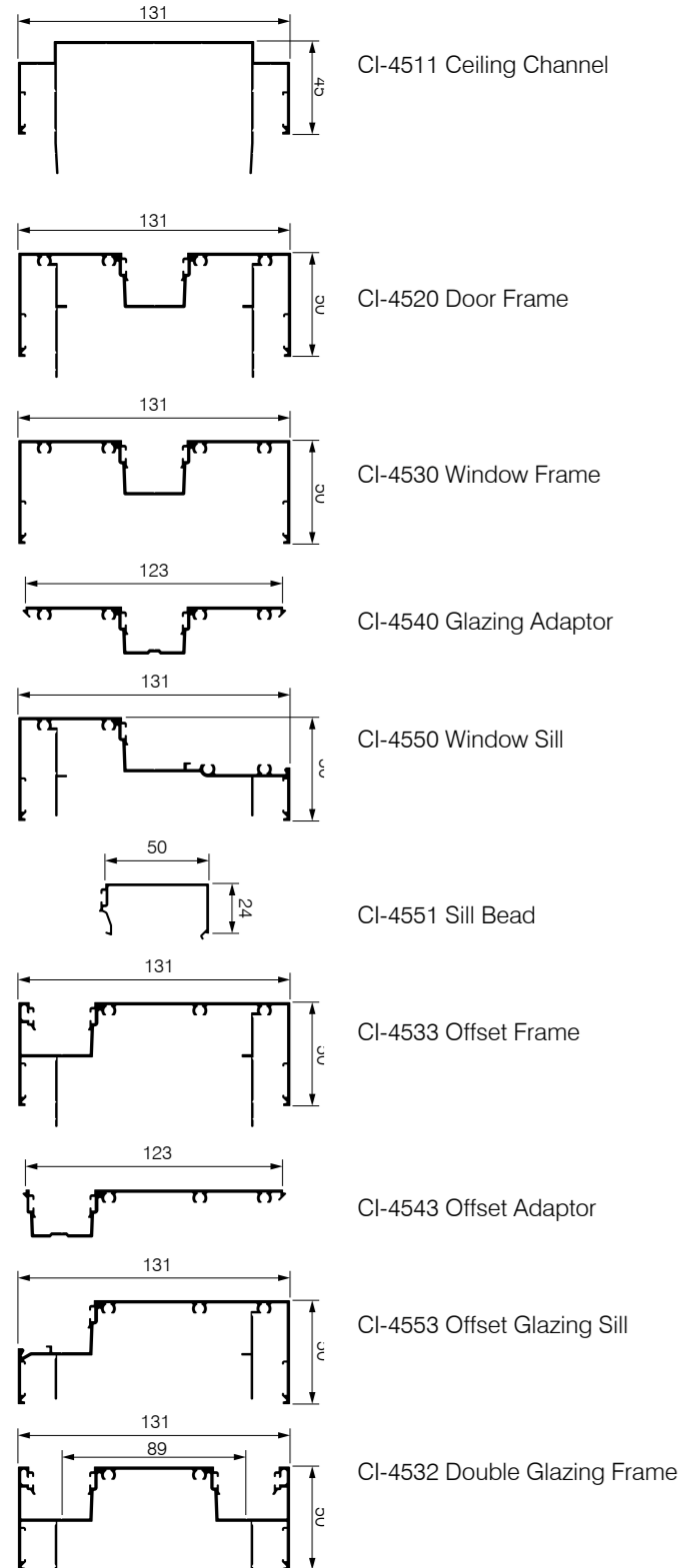
- Provides three plasterboard options:
  - 1) 92mm studs with a single layer of 13mm plasterboard on either side of the stud,
  - 2) 76mm studs with a double layer of 13mm plasterboard on one side of the stud and a single layer on the other, or
  - 3) 64mm studs with a double layer of 13mm plasterboard on either side of the stud
- Glazing pocket incorporates up to 15mm glass
- Door Stop options allow for

- 35mm, 38mm or 44mm doors
- Glazing pocket accepts either rubber or silicone glazing options
- Window/Door frames and Ceiling Channel accommodates gussets providing enhanced joining capabilities
- Suits a range of Cascade Sliding Door Cavity Units



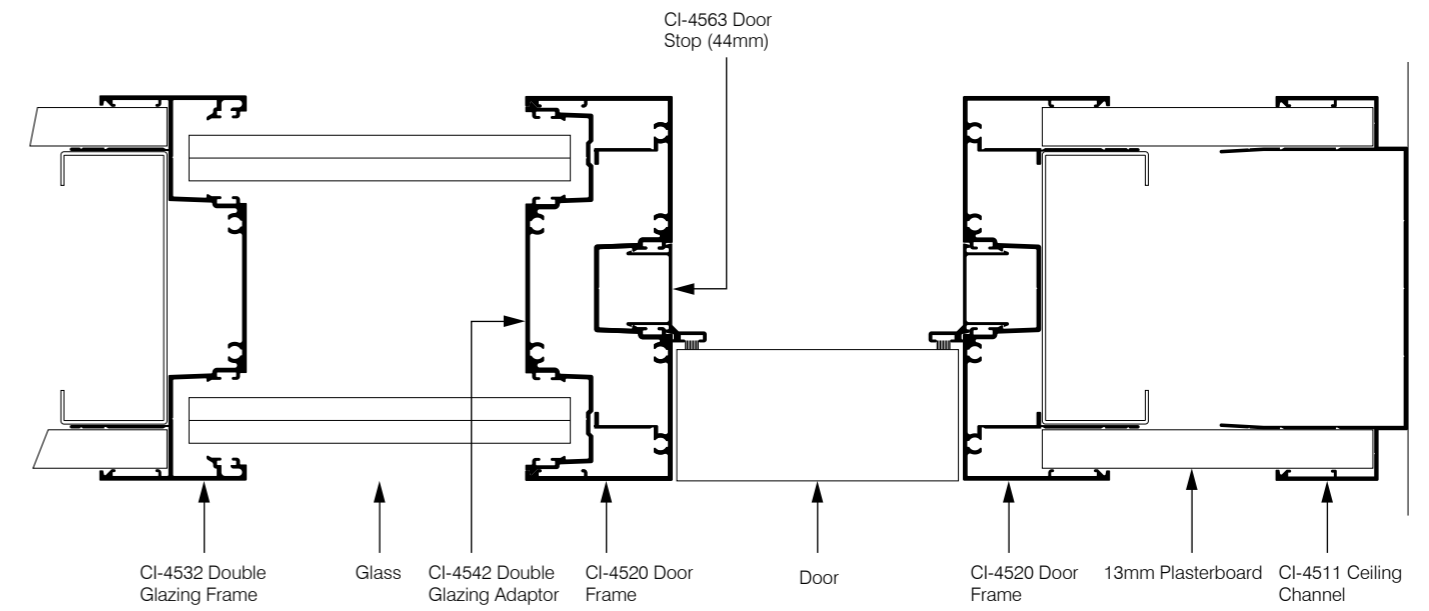
# Definium 120

To suit 92mm Studs

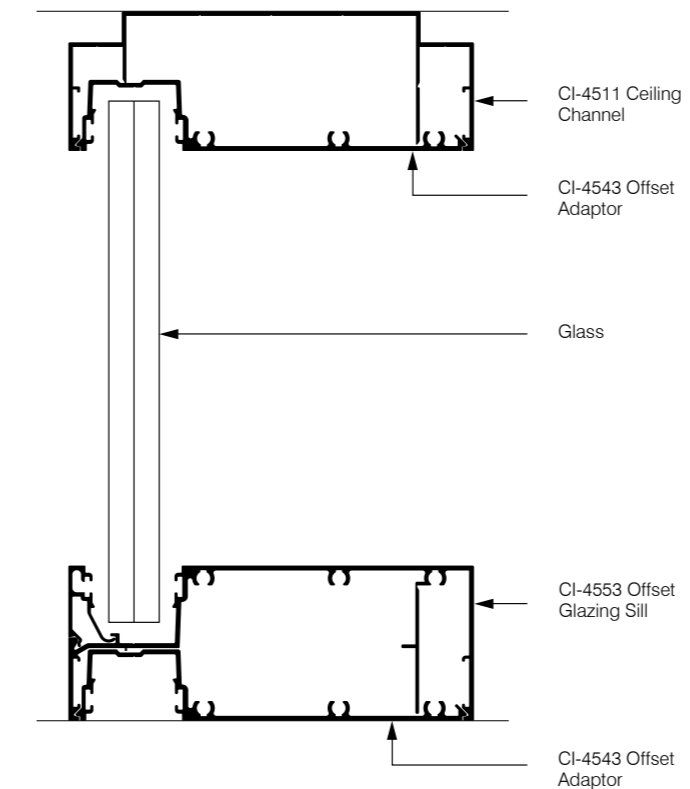


# Definium 120

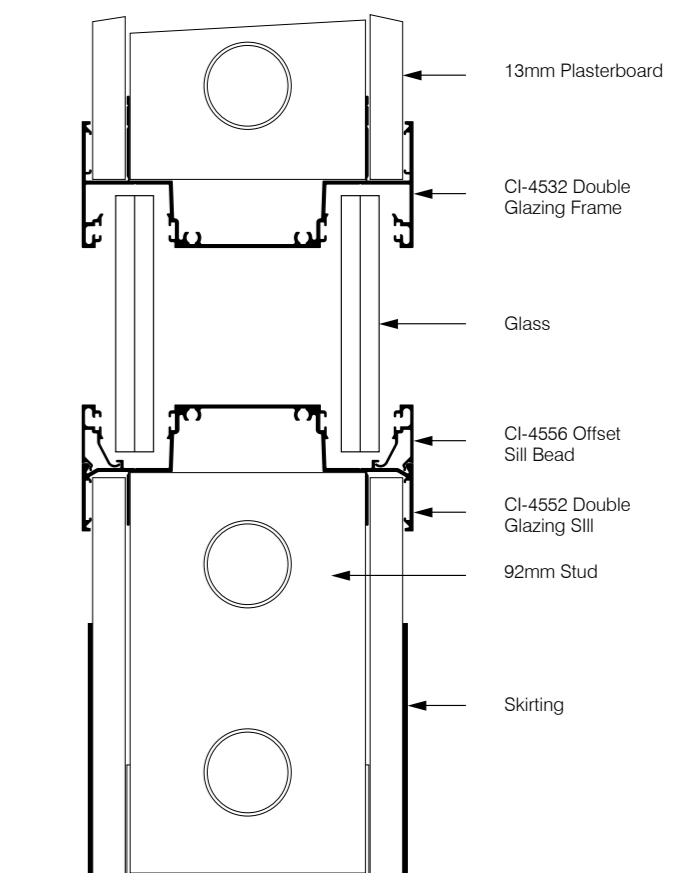
## Plan View



## Offset Glazing Elevation



## Double Glazing Elevation





**Criterion Industries (VIC)**

15 Corporate Place  
Broadmeadows VIC 3047

Telephone 03 9355 0700  
Facsimile 03 9355 0777

[sales@criterionindustries.com.au](mailto:sales@criterionindustries.com.au)  
[www.criterionindustries.com.au](http://www.criterionindustries.com.au)

**Criterion Industries (NSW)**

95 Victoria Street  
Smithfield NSW 2164

Telephone 02 9355 0700  
Facsimile 02 9355 0777

[sales.nsw@criterionindustries.com.au](mailto:sales.nsw@criterionindustries.com.au)  
[www.criterionindustries.com.au](http://www.criterionindustries.com.au)

**Criterion Industries (WA)**

58 Tacoma Circuit  
Canning Vale WA 6155

Telephone 08 9355 0700  
Facsimile 08 9355 0702

[sales.wa@criterionindustries.com.au](mailto:sales.wa@criterionindustries.com.au)  
[www.criterionindustries.com.au](http://www.criterionindustries.com.au)