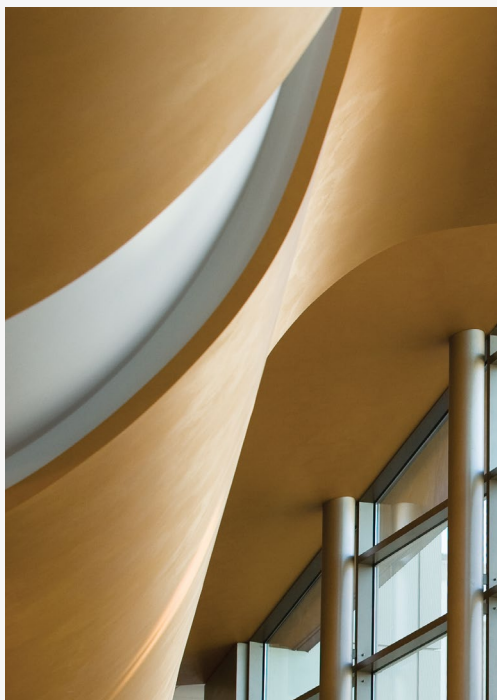
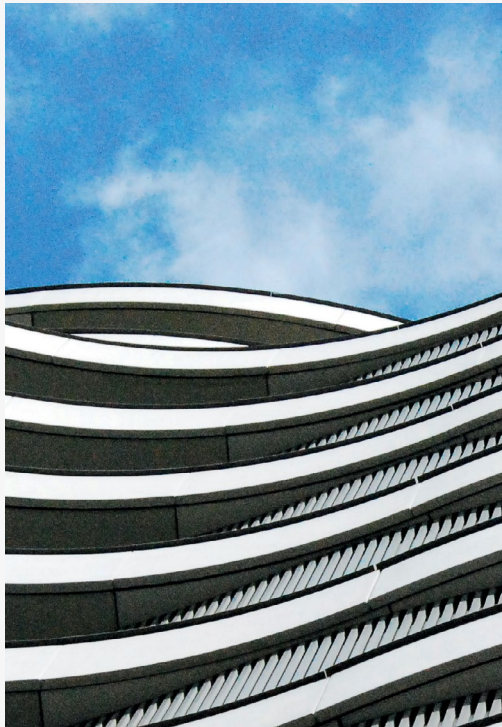


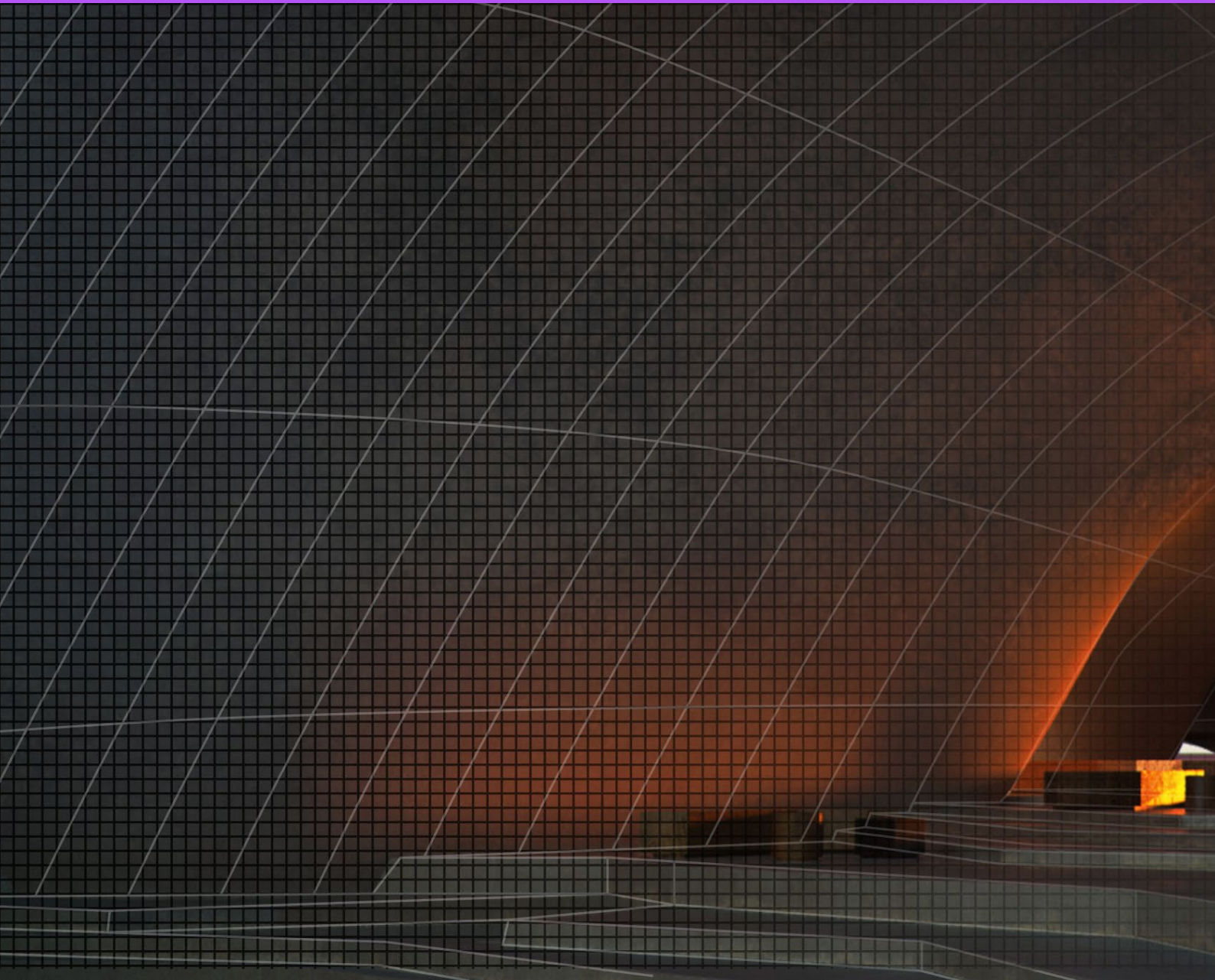
HP DesignJet Impact



Business | Clients | Community



30 years ago, the HP DesignJet was born...



1970s and 1980s	1990s	2000s
<p>HP small and large format pen plotters set the reference. A few years later, HP invents Thermal Inkjet technology, transforming the entire office printing experience.</p>	<p>HP DesignJet printers are launched—fast, affordable, and high quality monochrome and color printing transforms the way architects and engineers work.</p>	<p>HP innovation continues with pigment-based inks delivering exceptional large format photo quality for GIS and rendering.</p>

This led to a lifelong partnership with architects, designers, and creators, that continues to this day.



2023

HP DesignJet takes a giant leap forward in terms of productivity and security with the HP DesignJet XL 3800 Printer, which is fast, efficient, and HP Wolf Enterprise secure.

2019

The innovation continues with the HP DesignJet XL-series, providing extreme reliability in the most immediate, robust, compact, and secure MFP.²

2010

HP launches the first web connected and multifunction large format printers.

2015

HP reinvents large format printing with the HP DesignJet T830 Multifunction Printer, a robust, compact, Wi-Fi ready MFP with a built-in scanner, available at an unbeatable price.¹

2018

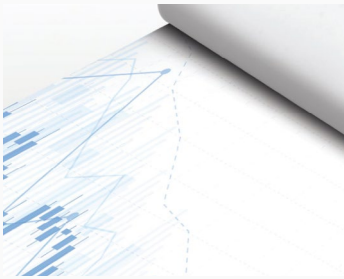
HP expands its proven HP DesignJet Z-series portfolio, reinforcing focus on high-impact graphics with HP DesignJet Z9+/Z6 PostScript® Printers.

One portfolio. Impact for every industry.



You and your clients have exacting standards. The HP DesignJet portfolio of printers, as well as our software, inks, and printing materials are designed to meet and exceed them. Our HP DesignJet XL, Z-series, and T-series printers deliver the image quality, accuracy, speed, security, and color necessary to satisfy even the most demanding clients, while keeping costs low and helping you win new and repeat business.





General in-office and large format printing

Take on technical, graphic, or other applications with HP DesignJet printers that provide terrific ease-of-use and flexibility. Print different document types and sizes.



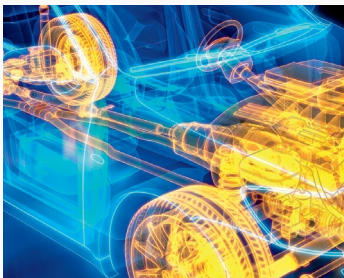
Geographic information systems, exploration, utilities, and land management

Print, copy, and scan drawings, satellite and aerial photos, maps, and more that communicate clearly with excellent image and line quality.



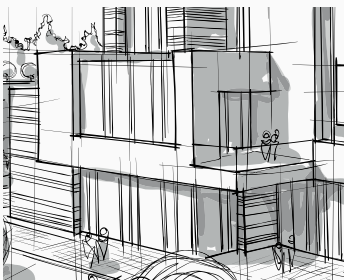
Reprographic and graphic print service providers

With HP DesignJet, reprographic houses can print, scan, and copy accurate and low-cost monochrome and color plans, plan sets, and renderings. You can quickly print posters, color proofs, POP displays, event signages, and more.



Manufacturing, automotive, and transportation

Print big, so even the smallest details get noticed. Produce large format plans, drawings, renderings, and more—easily, quickly, and with vibrant quality.



Architecture, engineering, and construction

Print large format drawings, schematics, renderings, and presentations with great ease, speed, and quality. HP DesignJet printers and MFPs can help build and grow your business.



Temporary retail POP and POS

Tailor your message to customers in stores with information, product displays, and sales offers delivered on demand. For signage with impact, choose large format HP DesignJet printers.



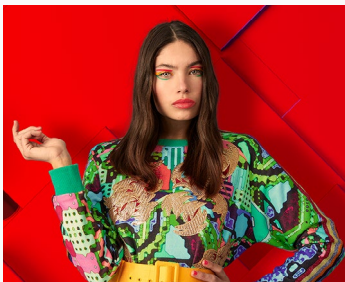
Education

Encourage learning with large format signs used for teaching, everyday communications, and more. HP DesignJet printers can help students make the grade.



Digital and fine art, and graphic design

Show off your digital design with large format prints and presentations. Produce fine art prints and reproductions that demonstrate strict color accuracy and high quality.



Photography

Bring your vision to life with large format photographs. HP DesignJet printers enable you to share and promote your work with professional photo quality and accuracy that are true to your vision.



High-quality POP and exhibition indoor signage

Create high-impact signage that lasts with HP DesignJet printers. Show off your brand with large format prints that demonstrate superb quality along with durable and lasting results – and make a big impression.



Copy shops and quick printers

Print more of the documents your customers want with HP large format printers that are easy, flexible, fast, and cost effective. Take on a wide variety of jobs and deliver stunning results.

Impactful solutions, accessories, and services



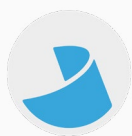
You

want to optimize your workflow. This means accomplishing more while saving money, managing your entire fleet (including non-HP large format printers), and boosting productivity.

We

have created advanced software solutions and applications that work with HP DesignJet printers to do exactly what you want.





HP Click printing software

Print with just one click,³ and optimize media usage and costs.
Learn more at hp.com/go/clickdesignjet



HP DesignJet Universal Print Driver (UPD)

Provide IT teams with greater control and effectiveness. This single driver solution simplifies printer deployment and management, saving time, and freeing IT to focus on innovation.
Learn more at hp.com/go/designjetup



HP SmartStream software

Make your large format production workflow twice as efficient.⁴
Learn more at hp.com/go/smartstreamdesignjet



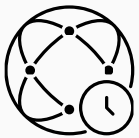
HP Mobile Printing

An easy way to print, scan, and share with your smartphone or tablet with the HP app.
Learn more at hp.com/go/designjetmo



HP Embedded Web Server

Enables you to view printer status information, change settings, and manage a limited number of printers at your computer.



HP Web Jetadmin

A web-based print management tool for businesses with more than 15 printers. Lets IT administrators install, configure, monitor, troubleshoot, and manage fleets. Learn more at hp.com/go/wja



HP PrintOS

Get more out of your HP DesignJet printers, simplify and automate your print production processes, and collaborate in new ways to grow your business. Learn more at www.hp.com/go/printos

Feature availability and related performance varies by printer, and may be optional. See individual product data sheets for more information at hp.com/go/designjet

Original HP Inks



Engineered to work as an optimized system with HP DesignJet printers to provide outstanding results and reliable, trouble-free performance. The result? Less downtime and lower printing costs. Use Original HP Inks to maximize printhead life and ensure full HP warranty protection.

Learn more at hp.com/go/originalhpinks

HP Flex Tech Inks

Formulated to excel on plain and coated papers, HP Flex Tech Inks deliver incredible line clarity and durability thanks to its pigmented formula, for use exclusively with HP's latest DesignJet technical printers.⁵

HP Bright Office Inks

Formulated to excel on plain papers, these fast-drying inks are a blend of HP dye-based bright color inks and HP pigment-based black ink for use with select HP DesignJet T-series printers.⁶

HP Vivid Photo Inks

Formulated to excel on photo, coated, and digital fine art papers, vibrant and durable HP pigment-based inks are designed exclusively for HP DesignJet Z-series printers.

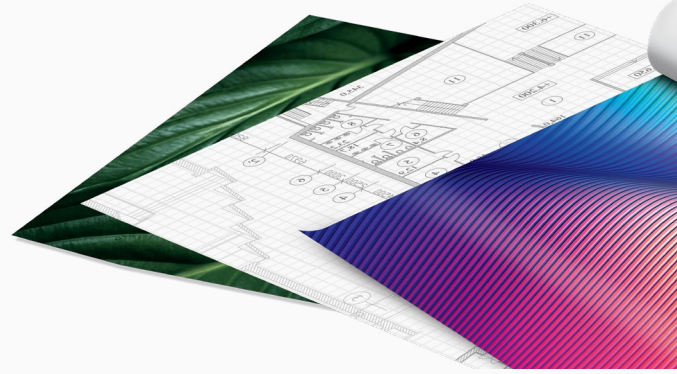
HP DesignJet Smart Tank Inks

Formulated to excel on plain papers, these inks enable reliable, low-cost performance with accurate lines, bright colors, bold blacks, and durable results.⁷

HP large format printing materials

These materials provide consistently outstanding image quality and, with a wide range to choose from, you'll always find the right printing material for the job, or for almost any application. HP premium printing materials are designed to provide best-in-class performance on key attributes like display permanence. For lower cost options, consider HP Everyday or HP Universal printing materials.

Learn more at HPLFMedia.com



HP DesignJet support services

Installation service with network setup

Onsite installation and network setup of your HP DesignJet printer by an HP-authorized service technician.

Next Business Day Onsite Repair

Extend your HP warranty for 2, 3, 4, and 5 years. An HP-authorized service technician typically arrives the next business day. Includes parts, material, and labor.

Post-warranty services

Provides continued protection after your standard HP warranty or HP Care Pack service expires. Offered in 1 and 2-year increments.

Learn more about HP DesignJet Support | Services at hp.com/go/designjetsupport





Experience the new standard of reliability

Designed to deliver. Built to last.



Technical production printers

HP DesignJet XL-series: New standard of reliability

XL-series printing solutions specs comparison	HP DesignJet XL 3800 Multifunction Printer 	HP DesignJet XL 3600 Multifunction Printer series 
Average printing volume ¹	300-700 sqm/month	100-300 sqm/month
Printer size/paper size	1603 mm (W) x 614 mm (D) x 1225 mm (H) 63 x 24 x 48 in 36 in	1500 mm (W) x 660 mm (D) x 1310 mm (H) 59 x 26 x 51 in 36 in
Scan and copy functions	☑	☑
Print speed (line drawings)	6 A1-D/min 20s for first page out 360 A1-D/h ²	3 A1-D/min 29s for first page out 180 A1-D/min ²
Scan speed	Color: up to 3 in/sec (7.62 cm/sec) Grayscale: up to 10 in/sec (25.4 cm/sec)	Color: up to 3 in/sec (7.62 cm/sec) Grayscale: up to 10 in/sec (25.4 cm/sec)
Print resolution	Up to 2400 x 1200 optimized dpi	Up to 2400 x 1200 optimized dpi
Scan and copy resolution	Up to 600 ppi	Up to 600 ppi
Scan features	Scan to your network folder, USB drive, printer HDD, and scan to email	Scan to your network folder, USB drive, printer HDD, and scan to email
Print languages (standard)	HP-GL/2, HP-RTL, TIFF, JPEG, CALS G4, PDF, PS ¹⁶	HP-GL/2, HP-RTL, TIFF, JPEG, CALS G4, PDF, PS
Scan formats (standard)	TIFF, JPEG, PDF, PDF/A	TIFF, JPEG, Multipage TIFF
Additional scan formats PostScript [®] upgrade (optional)	No	PDF, PDF/A, multipage PDFs
Ink cartridges and printheads	Four Original HP Inks (Flex Tech Inks and Permanent and Water-Resistant Black) and six HP printheads	Six Original HP Inks (Bright Office Inks and Permanent and Water-Resistant Black) and one Universal HP printhead
Ink cartridges capacity	500 ml Original HP Ink cartridges	300 ml Original HP Ink cartridges
Number of rolls/maximum roll length	Two automatic spindleless frontloading roll feeds; rolls up to 650 ft (200 m) long	Two automatic spindleless frontloading roll feeds; rolls up to 650 ft (200 m) long
Cut sheet support	No	☑
Compatible media core size	3 in	2 and 3 in
Media handling: output, capacity	Integrated output stacker, up to 100 A1-D/size capacity	Integrated output stacker, up to 100 A1-D/size capacity
Memory	128 GB (file processing), based on 8 GB RAM	128 GB (file processing), based on 8 GB RAM
Interfaces (standard)	Ethernet, Fast Ethernet, Gigabit Ethernet, 10/100/1000Base-T Ethernet (802.3, 802.3u, 802.3ab)	Ethernet, Fast Ethernet, Gigabit Ethernet, 10/100/1000Base-T Ethernet (802.3, 802.3u, 802.3ab)
Folder supported accessories	F40 folder compatibility	F40 folder compatibility
Universal print driver	☑	☑
PIN printing	☑	☑
HP Web Jetadmin	☑	☑
HP Mobile Printing	Email printing	No
	In-OS printing	☑
	HP Smart app	☑
	Remote printing	☑
Auto firmware updates	☑	☑
Job accounting functionality	☑	☑
Manage print queues	☑	☑
HP SmartStream for HP DesignJet printers	☑	☑
HP DesignJet Partner Link Alert Service	☑	☑
HP Command Center	☑ ⁶	No

HP DesignJet Z-series



High-impact quality



Our Z-series printers are perfect for digital print service providers, professional photographers, retail, graphic designers, and geographic information system (GIS) firms—those who expect to create professional photo quality prints with great consistency and precision. To find the right HP DesignJet Z-series printer for you, take a look at the impressive facts and figures on the next page.

Graphic printers



HP DesignJet Z-series: High-impact quality

Specifications to help you choose		HP DesignJet Z9+ Pro 64-in Printer 	HP DesignJet Z9+ PostScript Printer series 
Printer size/paper size	1626 mm (64 in)	610 mm (24 in) 1118 mm (44 in)	
Customer type	Print service providers, copy shops, photo labs, photo finishers, GIS	Photo labs, photo finishers, designers, print service providers	
Ink cartridges	9 inks: C, M, Y, mK, pK, G, CR, CG, CB (GE - optional)	9 inks: C, M, Y, mK, pK, G, CR, CG, CB (GE - optional)	
Inks	HP Vivid Photo Inks	HP Vivid Photo Inks	
Applications	Photos, canvas, backlits, POP graphics/displays, posters, banners, exhibitions, event graphics, maps, and orthophotos with professional photographic quality	Photos, canvas, backlits, POP graphics/displays, posters, banners, maps, and orthophotos with professional photographic quality	
Media handling - input	Automatic roll feeding, two roll feed and smart roll switching with multifunction roll accessory	One roll feed and manual sheet feed HP DesignJet Z9+dr model: two rolls feed and smart roll switching	
Media handling - output	Media bin, automatic horizontal cutter (cuts all HP Z-series printer qualified media including most canvas), optional 64-in take-up reel	Media bin, automatic horizontal cutter (cuts all HP Z-series printer qualified media including most canvas), vertical trimmer (on Z9+dr model), ¹⁰ optional take-up reel on 44-in models	
Print resolution	Up to 2400 x 1200 optimized dpi	Up to 2400 x 1200 optimized dpi	
Print speed	Best: 14.1 m ² /hr (152 ft ² /hr) on glossy media ⁸	24-in model Best: 3.5 m ² /hr (38 ft ² /hr) on glossy media ⁸ 44-in model Best: 4.5 m ² /hr (48 ft ² /hr) on glossy media ⁸	
Adobe PostScript®/PDF ⁹	Optional	☑	
HP Professional PANTONE® Color Emulation	Available with PostScript®/PDF Upgrade Kit ⁸	☑	
HP Click printing software	☑	☑	
Virtual memory and HDD capacity	Virtual memory: 128 GB (based on 4 GB RAM) Self-encrypted HDD capacity: 500 GB	Virtual memory: 128 GB (based on 4 GB RAM) Self-encrypted HDD capacity: 500 GB	
HP embedded spectrophotometer	☑	No	
Ability to print without RIP	☑	☑	
Security	Device	HP Secure Boot, whitelisting, signed firmware upgrade, Role Based Access Control, Front Panel Access Lock, disable protocols, SNMPv3	HP Secure Boot, whitelisting, signed firmware upgrade, Role Based Access Control, Front Panel Access Lock, disable protocols, SNMPv3
	Data	IPSec, SSL/TLS, 802.1x, HP Secure Boot, Secure Disk Erase NIST 800-99, X.509 certificate management, disable ports and protocols	IPSec compatibility, TLS/SSL, IPv4 and IPv6 compatibility, CA/JD certificates, 802.1x compatibility, Self-encrypted HDD, secure file and disk erase
	Document	PIN printing	PIN printing

HP DesignJet Z6 PostScript Printer series 	HP DesignJet Z6810 Production Printer 
610 mm (24 in) 1118 mm (44 in)	1067 mm (42 in)
GIS map creators/users, print service providers, and retailers for both graphics and technical applications	Copy shops, print service providers, photo labs, photo finishers, and GIS
6 inks: C, M, Y, mK, pK, CR	8 inks: C, M, Y, mK, pK, IG, IM, CR
HP Vivid Photo Inks	HP Vivid Photo Inks
Maps and technical drawings, POP graphics/displays, posters, and banners	Posters, banners, mockups, photos, digital fine art, proofs, displays, POP/POS, light boxes - film, exhibition, event graphics
One roll feed and manual sheet feed HP DesignJet Z6dr model: two rolls feed and smart roll switching	Roll feed
Media bin, automatic horizontal cutter (cuts all HP Z-series printer qualified media including most canvas), vertical trimmer (on Z6dr model), ¹⁰ optional take-up reel on 44-in models	Automatic horizontal cutter, media bin, optional take up reel
Up to 2400 x 1200 optimized dpi	Up to 2400 x 1200 optimized dpi
24-in model Fast: 66.9 m ² /hr (720 ft ² /hr) on plain media 44-in model Fast: 80.5 m ² /hr (866 ft ² /hr) on plain media	42-in model Best: 11 m ² /hr (118 ft ² /hr) on glossy media ⁸
☑	Optional
☑	Available with PostScript®/PDF Upgrade Kit ⁹
☑	☑
Virtual memory: 128 GB (based on 4 GB RAM) Self-encrypted HDD capacity: 500 GB	Virtual memory: 128 GB (based on 4 GB RAM) Self-encrypted HDD capacity: 500 GB
No	☑
☑	☑
HP Secure Boot, whitelisting, signed firmware upgrade, Role Based Access Control, Front Panel Access Lock, disable protocols, SNMPv3	Control Panel Access Lock, disable protocols
SNMPv3 compatibility, IPSec compatibility, TLS/SSL, IPv4 and IPv6 compatibility, CA/JD certificates, 802.1x compatibility, Self-encrypted HDD, secure file and disk erase	SNMPv3 compatibility, IPSec, secure disk, file erase, certificates management, and SSL
PIN printing	No

HP DesignJet T-series



Technical printers





High-impact accuracy

These printers are ideal for architectural, engineering, and construction companies (AEC) and geographic information system (GIS) firms. Also, MCAD professional users and workgroups and government agencies. If you need to print, scan, or copy maps, technical drawings, or renderings with precise, accurate line quality and crisp text, be sure to review the specifications on the following pages.

HP DesignJet T-series: High-impact accuracy

T-series printing solutions specs comparison		HP DesignJet T2600 Multifunction Printer series	
Average printing volume ¹		T2600dr: 300 to 600 A1-D/month; T2600: up to 300 A1-D/month	
Printer size/paper size		36 in (914 mm)/A0	
Scan and copy functions		☑	
Print speed (line drawings)		19.3 sec/page on A1-D, 180 A1-D/prints/hour ³	
Scan speed		Color: up to 3 in/sec (7.62 cm/sec) Grayscale: up to 10 in/sec (25.4 cm/sec)	
Print resolution		Up to 2400 x 1200 optimized dpi	
Scan and copy resolution		Up to 600 dpi	
Scan features		Scan to your network folder, USB drive, printer HDD, and scan to email	
Print languages (standard)		HP-GL/2, HP-RTL, TIFF, JPEG, CALS G4	
Additional print languages PostScript® SKU/PostScript® upgrade		Adobe PostScript® 3, Adobe PDF 1.7, Interpreter with Adobe PDF Print Engine 5	
Scan formats (standard)		TIFF, JPEG, Multipage TIFF	
Additional scan formats PostScript® upgrade (optional)		PDF, PDF/A, Multipage PDF	
Ink cartridges and printheads		Six Original HP Inks (Bright Office Inks and Permanent and Water-Resistant Black) and one Universal HP printhead	
Ink cartridges capacity		130 and 300 ml Original HP Ink cartridges	
Number of rolls/maximum roll length		T2600dr: Two automatic frontloading roll feeds; rolls up to 300 ft (91.4 m) long T2600: One automatic frontloading roll feed; rolls up to 300 ft (91.4 m) long	
Cut sheet support		☑	
Compatible media core size		2 in; 3 in only with optional accessory	
Media handling: output, capacity		Integrated output stacker, up to 100 A1-D/size capacity and integrated media bin	
Memory		128 GB (file processing, based on 8 GB RAM), 500 GB Encrypted Hard Disk (AES-256 encrypted)	
Interfaces (standard)		Ethernet, Fast Ethernet, Gigabit Ethernet, 10/100/1000Base-T Ethernet (802.3, 802.3u, 802.3ab)	
Folder supported accessories		No	
Universal print driver		☑	
PIN printing		☑	
HP Web Jetadmin		☑	
HP Mobile Printing	Email printing	☑	
	In-OS printing	☑	
	HP Smart app	☑	
	Remote printing	No	
Auto firmware updates		☑	
Job accounting functionality		☑	
Manage print queues		☑	
HP SmartStream for HP DesignJet printers		No	
HP DesignJet Partner Link Alert Service		☑	

HP DesignJet T1700 Printer series 	HP DesignJet T1600 Printer series 
T1700dr: 300 to 600 A1-D/month; T1700: up to 300 A1-D/month	T1600dr: 300 to 600 A1-D/month; T1600: up to 300 A1-D/month
44 in (1118 mm)/B0+	36 in (914 mm)/A0
No	No
26 sec/page on A1-D, 116 A1-D/prints/hour ³	19.3 sec/page on A1-D, 180 A1-D/prints A1-D/prints/hour ³
No	No
Up to 2400 x 1200 optimized dpi	Up to 2400 x 1200 optimized dpi
No	No
No	No
Basic printer: HP-GL/2, TIFF, JPEG, URF, CALS G4	HP-GL/2, HP-RTL, TIFF, JPEG, CALS G4
PostScript® printer: Adobe PostScript® 3, Adobe PDF 1.7 ext 3, HP-GL/2, TIFF, JPEG, URF, CALS G4	Adobe PostScript® 3, Adobe PDF 1.7, Interpreter with Adobe PDF Print Engine 5
No	No
No	No
Six Original HP Inks and three Universal HP printheads	Six Original HP Inks and one Universal HP printhead
130 and 300 ml Original HP Ink cartridges	130 and 300 ml Original HP Ink cartridges
One (T1700)/Two (T1700dr) automatic roll feeds; rolls up to 300 ft (91.4 m) long	T1600dr: Two automatic frontloading roll feeds; rolls up to 300 ft (91.4 m) long T1600: One automatic frontloading roll feed; rolls up to 300 ft (91.4 m) long
☑	☑
2 in; 3 in only with optional accessory	2 in; 3 in only with optional accessory
Integrated media bin	Integrated output stacker, up to 100 A1-D/size capacity and integrated media bin
128 GB (based on 4 GB DDR3 RAM) virtual 500 GB SED hard disk	128 GB (file processing, based on 4 GB RAM), 500 GB Encrypted Hard Disk (AES-256 encrypted)
Ethernet, Fast Ethernet, Gigabit Ethernet, 10/100/1000Base-T Ethernet (802.3, 802.3u, 802.3ab)	Ethernet, Fast Ethernet, Gigabit Ethernet, 10/100/1000Base-T Ethernet (802.3, 802.3u, 802.3ab)
No	No
☑	☑
☑	☑
☑	☑
☑	☑
☑	☑
☑	☑
☑	☑
☑	☑
No	No
☑	☑
☑	☑
☑	☑
No	No
☑	☑
☑	☑
No	No
☑	☑

HP DesignJet T-series: High-impact accuracy

T-series printing solutions specs comparison		HP DesignJet T950 Multifunction Printer 	HP DesignJet T950 Printer 
Average printing volume ¹		200 to 300 A1-D/month	200 to 300 A1-D/month
Printer size/paper size		914 mm (36 in)/A0	914 mm (36 in)/A0
Scan and copy functions		<input checked="" type="checkbox"/>	No
Print speed (line drawings)		21 sec/page on A1-D, 120 A1-D prints/hour ³	21 sec/page on A1-D, 120 A1-D prints/hour ³
Scan speed		Color: up to 1.5 in/sec Grayscale: up to 4.5 in/sec	No
Print resolution		Up to 2400 x 1200 optimized dpi	Up to 2400 x 1200 optimized dpi
Scan and copy resolution		Up to 600 dpi	No
Scan features		Scan to network folder, USB drive, scan to email and scan to cloud (through HP app)	No
Print languages (standard)		PCL3GUI, HP-GL/2, HP-RTL, JPEG, CALS G4, URF, TIFF, PDF	PCL3GUI, HP-GL/2, HP-RTL, JPEG, CALS G4, URF, TIFF, PDF
Additional print languages PostScript® SKU/PostScript® upgrade		No	No
Scan formats (standard)		PDF, JPEG, TIFF	No
Additional print languages PostScript® SKU/PostScript® upgrade		No	No
Ink cartridges and printheads		Four Original HP Inks and one Universal HP printhead	Four Original HP Inks and one Universal HP printhead
Ink cartridges capacity ¹⁵		130 and 300 ml Original HP Ink cartridges ¹⁵	130 and 300 ml Original HP Ink cartridges ¹⁵
Number of rolls/maximum roll length		One roll feed; roll up to 300 ft (91 m) long	One roll feed; roll up to 300 ft (91 m) long
Cut sheet support/tray capacity		<input checked="" type="checkbox"/> 100 A3-B	<input checked="" type="checkbox"/> 100 A3-B
Compatible media core size		2 in	2 in
Media handling: output, capacity		Stacker (up to 40 A1-D), Sheet organizer (50 A3-B)	Stacker (30 A1-D) Sheet organizer (50 A3-B)
Memory		2 GB	1 GB
Interfaces (standard)		Gigabit Ethernet (1000Base-T), Wi-Fi	Gigabit Ethernet (1000Base-T), Wi-Fi
Folder supported accessories		No	No
Universal print driver		No	No
PIN printing		No	No
HP Web Jetadmin		<input checked="" type="checkbox"/>	<input checked="" type="checkbox"/>
HP Mobile Printing	Email printing	<input checked="" type="checkbox"/>	<input checked="" type="checkbox"/>
	In-OS printing	<input checked="" type="checkbox"/>	<input checked="" type="checkbox"/>
	HP Smart app	<input checked="" type="checkbox"/>	<input checked="" type="checkbox"/>
	Remote printing	<input checked="" type="checkbox"/>	<input checked="" type="checkbox"/>
Auto firmware updates		<input checked="" type="checkbox"/>	<input checked="" type="checkbox"/>
Job accounting functionality		No	No
Manage print queues		Job reprint	Job reprint
HP SmartStream for HP DesignJet printers		No	No
HP DesignJet Partner Link Alert Service		<input checked="" type="checkbox"/>	<input checked="" type="checkbox"/>

T-series printing solutions specs comparison		HP DesignJet Smart Tank T918 Multifunction Printer 	HP DesignJet Smart Tank T908 Multifunction Printer 	HP DesignJet Smart Tank T858 Printer 
Average printing volume ¹		500 to 600 A1-D/month	500 to 600 A1-D/month	500 to 600 A1-D/month
Printer size/paper size		914 mm (36 in)/A0	914 mm (36 in)/A0	914 mm (36 in)/A0
Scan and copy functions		<input checked="" type="checkbox"/>	<input checked="" type="checkbox"/>	No
Print speed (line drawings)		21 sec/page on A1-D, 120 A1-D prints/hour ³	21 sec/page on A1-D, 120 A1-D prints/hour ³	25 sec/page on A1-D, 90 A1-D prints/hour ³
Scan speed		Color: up to 1.5 in/sec Grayscale: up to 4.5 in/sec	Color: up to 1.5 in/sec Grayscale: up to 4.5 in/sec	No
Print resolution		Up to 2400 x 1200 optimized dpi	Up to 2400 x 1200 optimized dpi	Up to 2400 x 1200 optimized dpi
Scan and copy resolution		Up to 600 dpi	Up to 600 dpi	No
Scan features		Scan to network folder, USB drive, scan to email and scan to cloud (through HP app)	Scan to network folder, USB drive, scan to email and scan to cloud (through HP app)	No
Print languages (standard)		PCL3GUI, HP-GL/2, HP-RTL, JPEG, CALS G4, URF, TIFF, PDF	PCL3GUI, HP-GL/2, HP-RTL, JPEG, CALS G4, URF, TIFF, PDF	PCL3GUI, HP-GL/2, HP-RTL, JPEG, CALS G4, URF, TIFF
Additional print languages PostScript® SKU/PostScript® upgrade		No	No	No
Scan formats (standard)		PDF, JPEG, TIFF	PDF, JPEG, TIFF	No
Additional print languages PostScript® SKU/PostScript® upgrade		No	No	No
Ink cartridges and printheads		Four Original HP Inks (HP DesignJet Smart Tank Inks) and one Universal HP printhead	Four Original HP Inks (HP DesignJet Smart Tank Inks) and one Universal HP printhead	Four Original HP Inks (HP DesignJet Smart Tank Inks) and one Universal HP printhead
Ink cartridges capacity		500 ml matte black, yellow, magenta and cyan Original HP Ink bottles	500 ml matte black, yellow, magenta and cyan Original HP Ink bottles	500 ml matte black, yellow, magenta and cyan Original HP Ink bottles
Ink tank capacity		575 ml	575 ml	575 ml
Number of rolls/maximum roll length		One roll feed; roll up to 300 ft (140 mm) long	One roll feed; roll up to 300 ft (140 mm) long	One roll feed; roll up to 150 ft (105 mm) long
Cut sheet support/tray capacity		<input checked="" type="checkbox"/> 100 A3-B	No	<input checked="" type="checkbox"/> 50 A3-B
Compatible media core size		2 in	2 in	2 in
Media handling: output, capacity		Stand with output bin	Stand with output bin	Stand with output bin
Memory		2 GB	2 GB	1 GB
Interfaces (standard)		Gigabit Ethernet (1000Base-T), Wi-Fi	Gigabit Ethernet (1000Base-T), Wi-Fi	Gigabit Ethernet (1000Base-T), Wi-Fi
Folder supported accessories		No	No	No
Universal print driver		No	No	No
PIN printing		No	No	No
HP Web Jetadmin		<input checked="" type="checkbox"/>	<input checked="" type="checkbox"/>	<input checked="" type="checkbox"/>
HP Mobile Printing	Email printing	<input checked="" type="checkbox"/>	<input checked="" type="checkbox"/>	<input checked="" type="checkbox"/>
	In-OS printing	<input checked="" type="checkbox"/>	<input checked="" type="checkbox"/>	<input checked="" type="checkbox"/>
	HP Smart app	<input checked="" type="checkbox"/>	<input checked="" type="checkbox"/>	<input checked="" type="checkbox"/>
	Remote printing	<input checked="" type="checkbox"/>	<input checked="" type="checkbox"/>	<input checked="" type="checkbox"/>
Auto firmware updates		<input checked="" type="checkbox"/>	<input checked="" type="checkbox"/>	<input checked="" type="checkbox"/>
Job accounting functionality		No	No	No
Manage print queues		Job reprint	Job reprint	No
HP SmartStream for HP DesignJet printers		No	No	No
HP DesignJet Partner Link Alert Service		No	No	No

HP DesignJet T-series: High-impact accuracy

T-series printing solutions specs comparison		HP DesignJet T850 Multifunction Printer 	HP DesignJet T850 Printer 	HP DesignJet T830 Multifunction Printer 
Average printing volume ¹		150 to 200 A1-D/month	150 to 200 A1-D/month	180 A1-D/month
Printer size/paper size		914 mm (36 in)/A0	914 mm (36 in)/A0	610 mm (24 in)/A1-D
Scan and copy functions		<input checked="" type="checkbox"/>	No	<input checked="" type="checkbox"/>
Print speed (line drawings)		25 sec/page on A1-D, 90 A1-D prints/hour ³	25 sec/page on A1-D, 90 A1-D prints/hour ³	26 sec/page on A1-D, 81 A1-D/prints/hour ³
Scan speed		Color: up to 1.5 in/sec Grayscale: up to 4.5 in/sec	No	Color: up to 3.81 cm/sec (1.5 in/sec) Grayscale: up to 11.43 cm/sec (4.5 in/sec)
Print resolution		Up to 2400 x 1200 optimized dpi	Up to 2400 x 1200 optimized dpi	Up to 2400 x 1200 optimized dpi
Scan and copy resolution		Up to 600 dpi	No	Up to 600 dpi
Scan features		Scan to network folder, USB drive, scan to email and scan to cloud (through HP app)	No	Scan to email, scan to cloud (through HP Smart app), network, USB, computer, mobile
Print languages (standard)		PCL3GUI, HP-GL/2, HP-RTL, JPEG, CALS G4, URF, TIFF, PDF	PCL3GUI, HP-GL/2, HP-RTL, JPEG, CALS G4, URF, TIFF	TIFF, JPEG, CALS G4, HP PCL 3 GUI, HPGL/2, HP-RTL, URF
Additional print languages PostScript® SKU/PostScript® upgrade		No	No	No
Scan formats (standard)		PDF, JPEG, TIFF	No	JPEG, TIFF, PDF
Additional scan formats PostScript® upgrade (optional)		No	No	No
Ink cartridges and printheads		Four Original HP Inks and one Universal HP printhead	Four Original HP Inks and one Universal HP printhead	Four Original HP Inks and one Universal HP printhead
Ink cartridges capacity		130 and 300 ml Original HP Ink cartridges	130 and 300 ml Original HP Ink cartridges	69 and 300 ml matte black; 40, 130, and 300 ml yellow, magenta, and cyan Original HP Ink cartridges
Number of rolls/maximum roll length		One roll feed; roll up to 150 ft (45.7 m) long	One roll feed; roll up to 150 ft (45.7 m) long	One roll feed; rolls up to 150 ft (45.7 m) long
Cut sheet support/tray capacity		<input checked="" type="checkbox"/> 50 A3-B	<input checked="" type="checkbox"/> 50 A3-B	<input checked="" type="checkbox"/> 50 A3-B
Compatible media core size		2 in	2 in	2 in
Media handling: output, capacity		Stand with output bin	Stand with output bin	Integrated media bin
Memory		2 GB	1 GB	1 GB
Interfaces (standard)		Gigabit Ethernet (1000Base-T), Wi-Fi	Gigabit Ethernet (1000Base-T), Wi-Fi	Gigabit Ethernet (1000Base-T); Wi-Fi 802.11b/g/n; Wi-Fi Direct
Folder supported accessories		No	No	No
Universal print driver		No	No	<input checked="" type="checkbox"/>
PIN printing		No	No	No
HP Web Jetadmin		<input checked="" type="checkbox"/>	<input checked="" type="checkbox"/>	<input checked="" type="checkbox"/>
HP Mobile Printing	Email printing	<input checked="" type="checkbox"/>	<input checked="" type="checkbox"/>	<input checked="" type="checkbox"/>
	In-OS printing	<input checked="" type="checkbox"/>	<input checked="" type="checkbox"/>	<input checked="" type="checkbox"/>
	HP Smart app	<input checked="" type="checkbox"/>	<input checked="" type="checkbox"/>	<input checked="" type="checkbox"/>
	Remote printing	<input checked="" type="checkbox"/>	<input checked="" type="checkbox"/>	No
Auto firmware updates		<input checked="" type="checkbox"/>	<input checked="" type="checkbox"/>	<input checked="" type="checkbox"/>
Job accounting functionality		No	No	No
Manage print queues		No	No	No
HP SmartStream for HP DesignJet printers		No	No	No
HP DesignJet Partner Link Alert Service		<input checked="" type="checkbox"/>	<input checked="" type="checkbox"/>	No

HP DesignJet Studio Printer series 	HP DesignJet T600 Printer series 	HP DesignJet T200 Printer series 
120 to 150 A1-D/month	120 to 150 A1-D/month	100 A1-D/month
610 mm (24 in)/A1-D 914 mm (36 in)/A1-D	610 mm (24 in)/A1-D 914 mm (36 in)/A1-D	610 mm (24 in)
No	No	No
36-in: 25 sec/page on A1/D, 82 A1/D prints per hour 24-in: 26 sec/page on A1/D, 81 A1/D prints per hour	T650: 36 in: 25 sec/page on A1-D; 82 A1-D/prints/hour ⁷ 24 in: 26 sec/page on A1-D; 81 A1-D/prints/hour ⁷ T630: 36 in and 24 in: 30 sec/page on A1-D; 76 A1-D/prints/hour ⁷	T250: 30 sec/page on A1-D; 76 A/D1 prints/hour ⁷ T230: 35 sec/page on A1-D; 68 A/D1 prints/hour ⁷ T210: 45 sec/page on A1-D; 59 A/D1 prints/hour ⁷
No	No	No
Up to 2400 x 1200 optimized dpi	Up to 2400 x 1200 optimized dpi	Up to 2400 x 1200 optimized dpi
No	No	No
No	No	No
HP-GL/2, HP-RTL, JPEG, CALS G4, URF	HP-GL/2, HP-RTL, JPEG, CALS G4, URF	JPEG, URF
No	No	No
No	No	No
No	No	No
Four Original HP Inks and one HP printhead (C,M,Y,K)	Four Original HP Inks and one HP printhead (C,M,Y,K)	Four Original HP Inks and one HP printhead (C,M,Y,K)
80 ml and 38 ml matte black; 29 ml yellow, magenta, and cyan Original HP Ink cartridges	80 ml and 38 ml matte black; 29 ml yellow, magenta, and cyan Original HP Ink cartridges	80 ml and 38 ml matte black; 29 ml yellow, magenta, and cyan Original HP Ink cartridges
One roll feed; rolls up to 150 ft (45.7 m) long	One roll feed; rolls up to 150 ft (45.7 m) long	One roll feed; rolls up to 150 ft (45.7 m) long
☑ 50 A3-B	☑ 50 A3-B	☑ 50 A3-B
2 in	2 in	2 in
Integrated and retractable media bin	Integrated media bin	Optional media bin
1 GB	1 GB	512 MB
Gigabit Ethernet (1000Base-T), Hi-Speed USB 2.0, Wi-Fi 802.11	Gigabit Ethernet (1000Base-T), Hi-Speed USB 2.0, Wi-Fi 802.11	Gigabit Ethernet (1000Base-T), Hi-Speed USB 2.0, Wi-Fi 802.11
No	No	No
☑	☑	☑
No	No	No
☑	☑	No
No	No	No
☑	☑	☑
☑	☑	☑
☑	☑	☑
☑	☑	☑
No	No	No
No	No	No
No	No	No
No	No	No

The impact of advanced technology



High-definition Nozzle Architecture (HDNA) and HP Dual Drop Technology

Provides twice the nozzle density of previous HP DesignJet Z-series printheads. Using dual drop technology, high-definition HP printheads produce a combination of large drop sizes (7 pL) for robust area fills at fast speeds, while small drop sizes (3 pL) reduce visible grain—eliminating the need for light-colored inks.



Adobe PDF Print Engine⁹

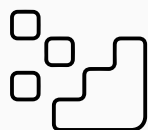
This high-speed, high-fidelity print platform renders PDF job content, converting graphics, text, and images to rasters for driving HP DesignJet large format printers. It provides tile parallel processing, extended spot color handling, and the smoothest shades ever.

It's a simple fact: We grow when you grow. We prosper when you do. Our relationship with you is of major importance to us. So we put our heart and soul, our brains, and imagination into developing some of the world's most advanced printing technology. It's another way HP DesignJet large format printers can help you make the kind of impact that sets your business apart.



HP Embedded Spectrophotometer

Integrated with some HP DesignJet printers, this precision instrument provides a high degree of color accuracy and color consistency from the first print to the last one—and from printer to printer—regardless of paper types.



HP Pixel Control

This breakthrough moves from building color output, ink layer by ink layer, to directly choosing color at the pixel level. This results in smoother transitions, richer and deeper colors, accurate spot colors, and sharper details.



HP professional PANTONE® emulation

Matches colors as closely as possible to the original PANTONE® colors by taking into account your printer and paper type. Designed to produce emulations similar to those set up manually by prepress professionals.



Integrated vertical trimmer¹⁰

The industry's first integrated vertical trimmer, this inline finishing option lets you cut post-processing labor time by up to 20%.



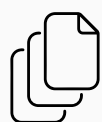
HP Optical Media Advance Sensor (OMAS)

Enables you to print at top speeds and still get outstanding results. This breakthrough technology improves paper-advance control and accuracy, so the printer can print at higher speeds across multiple environmental conditions without impairing image quality.



HP Double Swath Technology

Unique to HP, this advanced technology provides breakthrough speed and performance thanks to two sets of printheads, creating a wide print swath and high firing frequency.



Adobe PostScript®

Enables you to print any document—text, graphics, images, and color—from any computing platform to any supported device, at the highest quality possible. Delivers optimized quality for PANTONE® color emulation, and eliminates errors, printing complex PDFs with different layers.



Designed with the environment in mind

Most HP DesignJet large format printers are ENERGY STAR® certified, which means they meet strict energy efficiency guidelines without sacrificing performance. Most are also EPEAT® registered,¹⁴ which means they have a reduced environmental impact across their lifecycle.

Learn more at hp.com/sustainability

Defend your devices, data, and documents



Imaging and printing vulnerability points



Threats to your device

Control panel

Users can exploit device settings and functions

Default password

Printers can come with simple default passwords that can be easily compromised

BIOS and firmware

Compromised firmware can open a device and network to attack

Critical gaps can occur at multiple points within your imaging and printing environment. Once you understand these vulnerabilities, you can more easily reduce the risks.



Threat to your data

Data at rest

Printers store sensitive data that can be at risk

Capture

Unsecured MFPs can be used to send scans anywhere

Data in transit

Jobs can be intercepted as they travel to/from a device



Threats to your documents

Output tray

Abandoned documents can fall into the wrong hands

Ports and protocols

Unsecured ports (USB or network) or protocols (FTP or Telnet) put devices at risk

Management

Undetected security gaps put data devices

Feature availability and related performance varies by printer, and may be optional.
See individual product data sheets for more information at hp.com/go/designjet

Exceptional protection. Simple and secure.



HP Wolf Security^{12,13} now extends to large format HP DesignJet printers and plotters.



To help print businesses like yours address future vulnerabilities and risks, HP Wolf Security delivers integrated endpoint protection and resiliency that starts at the hardware level and extends across software.

It's a breed of endpoint security,¹² rooted in zero trust principles, that is continually evolving to help you stay ahead of modern threats.



Improve your security posture—with ease



While HP Wolf Security offers exceptional protection, it also enables systems to defend themselves and self-heal. Deploy and manage systems easily without compromising the breadth and depth of your security coverage.



HP WOLF SECURITY



Defend your growing business

Detect

Automatically detect issues or threats before you can spot them yourself

Protect

Protect your business and maintain momentum with strong security that keeps you ahead of cyberthreats

Recover

Automatically recover from attacks without burdening busy IT teams



Three different levels of protection



HP DesignJet printers with HP Wolf Security have varying degrees of protection already built into them. By purchasing an HP Wolf secure printer, you are sure to have the appropriate level of security for your needs.

HP Wolf Essential Security

Lay a secure foundation with hardware-powered protection.

HP Wolf Pro Security

Safeguard your business with proactive protection against cyber threats.

HP Wolf Enterprise Security

Stay ahead of evolving security threats while supporting hybrid work.

Making an impact on growth

HP DesignJet large format printers are uniquely able to help you achieve them. These remarkable devices represent a major leap forward in large format printers and include some of the world's most sophisticated printer technology and features.

HP DesignJet printers will help you operate more efficiently, increase productivity, and reduce costs—all while meeting the highest standards of print quality. In short, they'll help elevate your business to new heights of prosperity. No wonder businesses eager to grow are selecting HP DesignJet.

There's more to learn about these powerful printers—much more.

For details, visit hp.com/go/designjet



You have big goals and dreams for your business.



1. Based on 36 in Wi-Fi® integrated MFPs available in the market as of September, 2015.
2. Applicable to the HP DesignJet XL 3600 Multifunction Printer series. Advanced embedded security features are based on HP review of 2019 published embedded security features of competitive printers, as of February 2019.
3. Once image is selected, get one-click printing when printing the entire file without any modifications to the print settings. Applicable to PDF, JPEG, TIFF, DWF, and HP-GL/2 files.
4. Using HP SmartStream software, job preparation and processing can be completed in 50% of the time. Based on testing commissioned by HP and performed by Sogeti in September, 2020 comparing select competitor printers that represent the majority market share of LED printers worldwide as of 2019 according to IDC, and software to HP SmartStream software, measuring the time required to extract pages from a 63-page document and print them using several printers compared with using equivalent software programs.
5. HP Flex Tech Inks must be used with HP DesignJet XL 3800, HP DesignJet T850, and HP DesignJet T950 printers.
6. HP Bright Office Inks must be used with HP DesignJet T1x0, T2x0, T6x0, T7x0, T830, T920, T930, T1x00 and T2x00 printers.
7. HP DesignJet Smart Tank Ink must be used with HP DesignJet Smart Tank T858 and T908 printers.
8. Maximum rate of output for color image is 100% color coverage. Printed on maximum roll size, with Original HP Vivid Photo Inks.
9. May require purchase of PostScript® models or optional HP DesignJet PostScript®/PDF Upgrade Kit.
10. Vertical trimmer and dual rolls included with the HP DesignJet Z9+dr 44 in and Z6dr 44 in PostScript® printers with V-Trimmer only. Up to 20% reduction in post-processing labor time based on internal HP testing compared to HP DesignJet Z9+dr and Z6dr series printers without built-in vertical trimmer.
11. Based on comparison of published security specifications commissioned by HP and performed by Sogeti in February 2023. Comparison of HP DesignJet XL 3800 security features and competitors from different manufacturers that represent the majority of TDP low volume market share worldwide as of February 2023. Further details available upon request.
12. HP Security is now HP Wolf Security. Security features vary by platform, please see product data sheet for details.
13. All HP DesignJet Printers have varying levels of security, but only select printers can claim HP Wolf Security. These include the HP DesignJet XL 3800 Printer, HP DesignJet T850 Printer/T850 MFP, and HP DesignJet T950 Printer/T950 MFP. HP Wolf Security will become a standard feature on future HP DesignJet products.
14. EPEAT® registered where applicable. EPEAT registration varies by country. See epeat.net for registration status by country.
15. In the United States, only the 300 ml Original HP Ink cartridge is available with the HP DesignJet XT950 Printer and the HP DesignJet XT950 Multifunction printer.
16. PostScript capabilities will be included as a standard feature six (6) months after product introduction.

