



Visit www.breezway.com/malaysia for more information.

Malaysia

Breezway (Malaysia) Sdn Bhd.
No 39, Jalan Wawasan 3/KU 7
Sungai Kapar Indah
42200 Klang
Selangor Darul Ehsan
Reg# 601783-T
Telephone: 03 3291 4885
Facsimile: 03 3291 9887
Email: malaysiasales@breezway.com

Australia

Breezway Head Office
35 Cambridge Street
Coorparoo QLD 4151
ABN 24 081 897 823
Telephone: +61 7 3847 0500
1800 777 758 (from within Australia)
Facsimile: +61 7 3397 8643
Email: sales@breezway.com.au

THE BREEZWAY
IDEAS BOOK



Your Breezway Louvre Window Distributor:



Altair™ Louvre Windows by Breezway

We think that Breezway Louvre Windows are the best type of window available. They're stylish, versatile, energy efficient and totally customisable. We hope that by the time you've finished reading through this brochure, you'll agree with us.

Through this brochure you'll find:

- Ideas on how Altair™ Louvre Windows can enhance your home,
- Information on the energy efficiency of Altair™ Louvre Windows and
- Guidance through the various customising options available.

We are available to answer your questions, chat through your needs or suggest a local Breezway Distributor. So please refer to the back of this brochure or visit our website www.breezway.com/malaysia today to locate your nearest Breezway Office and our louvre experts will be more than happy to help.

They don't make louvres like they used to

Louvre windows have changed significantly since we began manufacturing them in the late 1940's, but they are still a practical and stylish window choice.

Key features of modern Altair™ Louvre Windows:

- Slimline Window System has been custom designed for the Malaysian window market.
- Manufactured exclusively from non-corrosive materials for strength and long life durability.
- Monsoon rated for wind and water to ensure maximum performance.
- Tight sealing due to the patented 'living hinge' and drainage channel design.
- Energy rated to suit various climates.
- Superior aesthetics and a wide variety of customising options.

breezway



Maximum Ventilation

Fully open, louvre blades are close to horizontal. This means they provide very little resistance to the air entering through the window opening. In effect, you get twice as much ventilation as you would through a same sized sliding window or double hung window.

The benefits of Altair™ Louvre Windows over other window types don't end with ventilation. When open, they don't get in the way of passing traffic. They can be left open in gentle rain. And the inside and the outside surfaces can be cleaned from inside the building (handy in multi-storey buildings.)

Free air in every room of your home



Malaysia is renowned for its moderately hot and humid tropical weather. And often this means, a hot uncomfortable house to live or work in if it does not have sufficient ventilation.

To make sure you stay comfortably cool inside your home at any time of day, Breezway Louvres are the answer!

Altair™ Louvre Windows in a Slimline Window System allow you to open up the home in a stylish and elegant manner to embrace fresh, cooling breezes that flow into the room. This not only creates an open, light and airy living space, but also naturally lowers the temperature of the room without the need for expensive electric air conditioners.

This is what we mean by free air. And you can have it in every room of your home.

Tip: Use timber or aluminium blades to block out hot direct sunlight.



breezway™

Let's look at the bedroom

Internal Louvres

To effectively cool a room, you need to let cool, fresh air in and also let warm, stale air out. This can be difficult if a room only has one single outside wall.

Altair™ Louvre Windows in a Slimline Window System can be an ideal solution. They offer maximum ventilation for their size. And they are flexible enough to fit any space available, whether it is tall, short, narrow or wide.

Timber or aluminium blades are available to provide privacy and the tight sealing of Altair™ Louvres means that conversations can remain private.

Now the wall above bedroom doors, in the corner of the room, or down low behind a desk can be transformed into a cooling breeze-way.



Every bedroom needs fresh air. And the best way to get lots of fresh air inside is with Altair™ Louvre Windows.

Fully open, the louvre blades are close to horizontal.

And when closed, the patented 'living hinge' design of Altair™ Louvre Windows allows them to seal more tightly than any other louvre window on the market.

Tip: For those with limited space for a window (eg. in a small bedroom) Altair™ Louvre Windows provide good ventilation through a much smaller window opening.



breezway™



Relaxing in the living room

Altair™ Louvre Windows are a perfect idea for the living room. They are stylish, modern, and a healthy alternative to air conditioning as they allow natural light and fresh air to flow into the home so you can sit and enjoy the comfort of your living room at any time of day.

Choosey about colours? Breezway has colour options for you to choose from so you can best match your living room decor.

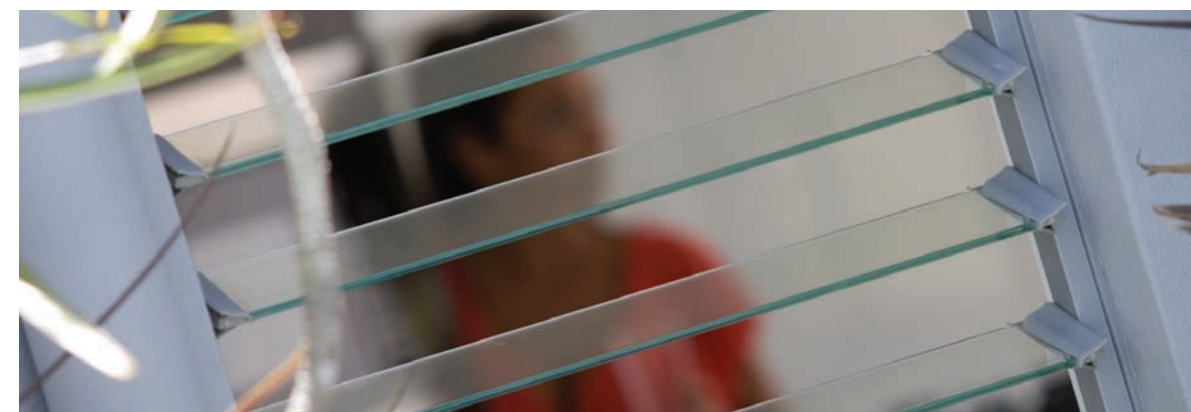
Nosey neighbours? The choice of timber and aluminium blades means you can have your fresh air and your privacy, too.



Did you know

Generating the electricity to run a single average living room sized airconditioner can cause the release of around 5 tons of greenhouse gasses per year.

breezway™



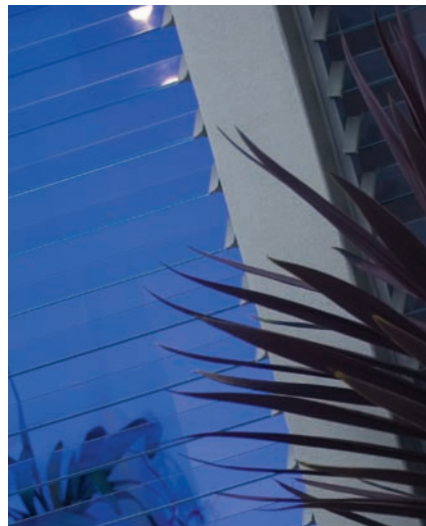
Walkways and other areas within the home

The air within homes can be more polluted than the outdoor air. For example, pet odours, kid's smelly shoes, cooking smells and a variety of other airborne particles can combine to make a virtual indoor smog.

Altair™ Louvre Windows in stairways, in walk-in-robos, adjacent to landings, at corridor ends, and in toilets are a sensible and stylish way to allow these smells to escape and clean the air you breathe.

Altair™ Louvres up high are also a great way for allowing hot, stale air to be efficiently released throughout the day. Fresh, cool air can then enter at night and be retained for early morning starts.

Tip: Floor to ceiling height louvres are ideal for taking advantage of outdoor views, fresh air and provide an abundance of natural light into the home.

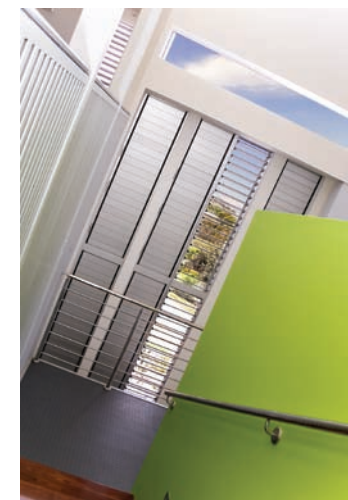


breezway™

Choice of glazing to suit your environment

Altair™ Louvre Windows have a wide variety of glazing options to suit various climatic conditions.

In warm climates, such as Malaysia, a primary consideration is to reduce the amount of hot sunlight that enters the home through the windows. Tinted glass and timber blades are great options.





Steam free

Bathrooms need proper ventilation so that steam can be released after hot showers and the build up of mould or moisture in your walls and ceilings can be avoided. Installing exhaust fans can help ventilate the bathroom, but, the best option is to include louvres in all your wet areas to let in fresh air and natural light.

Clever architects and designers are now placing Altair™ Louvre Windows (with timber or aluminium blades for privacy) behind towel rails to speed up the drying process.

We make little louvres for installation near vanity mirrors to stop them fogging up.

Our louvres in laundries also make sense, if only because they help stop the mould growing.

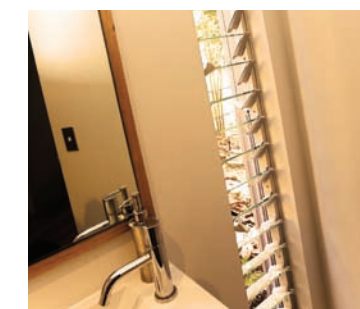
It's also good to know that when it's blowing a gale outside, Altair™ Louvre Windows in a Slimline Surround Frame are reliable for any situation as they are the most wind and rain resistant product of its kind anywhere in the world.

This is due to our patented 'living hinge' mechanism which ensures an extremely firm fit between the louvre clips and channels to resist water and air leakage.



Did you know

Use Altair™ Louvre Windows to prevent mould and mildew in your home that is often caused by insufficient ventilation.





Louvres in the kitchen

Fish may taste nice but it doesn't smell so good when it's cooking.

A set or two of Altair™ Louvre Windows in a Slimline Surround Frame are a wise inclusion in every kitchen. They will help take away cooking smells as well as the heat of your hot pot.

The stylish handles on our louvres can be positioned to the left, to the right, up high, or down low. This makes louvres easy to open in hard to reach places.

Modern technology

Altair™ Louvre Windows by Breezway provide a modern alternative to traditional air conditioners and are an energy efficient way to maintain a comfortable, stable indoor temperature.

They are ideal for creating cross flow ventilation so hot, stale cooking smells can blow out and fresh, cool air can flow into the home to keep it comfortable at all times.

This reduces the amount of electricity needed to cool the home which thereby reduces household energy costs and will improve the environment we live in for years to come.

breezway™



Customise your Altair™ Window

This section will help you choose the right combination of Altair™ Louvre Windows by Breezway for any residential or commercial application. Just follow these 5 simple steps.

Step 1 Select your choice of frame and window system

Step 2 Select your louvre blade

Step 3 Select a control method

Step 4 Select clip and handle colours

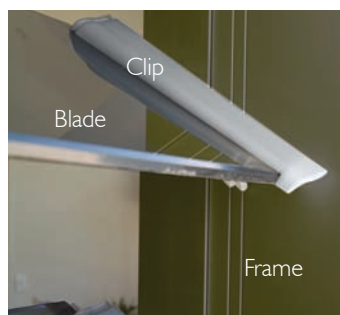
Step 5 Contact your local Breezway Distributor

Visit www.breezway.com/malaysia for your nearest location.

Step 1: Select your choice of frame and window system

When selecting your frame, think about the look of your home from the inside and the outside. You should consider the design and colour of your home when selecting frames as there are a range of colours to choose from with options to suit varied applications.

You should also take into consideration the type of window system available in order to achieve the best performance results for your home. The Slimline Window System by Breezway has been custom designed for South East Asia and is made from non-corrosive materials to offer strength and long life durability. Speak to your Breezway Louvre Window Distributor for more details.



Aluminium

Aluminium frames are timeless in their appearance and require virtually no maintenance. Aluminium can be powder coated or anodised in a range of colours.

Timber

Timber frames are very stylish. Timber conducts very little heat, making it an energy efficient option. Breezway Louvre Windows can be installed in all of the timber varieties commonly used to build window frames.

uPVC

As with timber, uPVC is an energy efficient option for framing Altair™ Louvre Windows. uPVC requires almost no upkeep.

Step 2: Select your louvre blade

With Altair™ Louvre Windows you can choose blades that suit your surroundings. Timber blades are great for shading and privacy, while glass* blades let the outside in and aluminium blades add a sharp modernity to your home, are easy to maintain, and come in many colours. Just take your pick!

Inside or outside?

Altair™ Louvre Windows are predominately used as external windows to efficiently catch cooling breezes and allow them to flow freely into the home. Alternatively, Altair™ Louvres can be used inside the house to create room dividers and improve the quality of airflow throughout each room to keep it a comfortable temperature at any time of day.

Thick or thin?

Altair™ Louvre Windows are available with two standard blade heights: 102mm and 152mm.

Mix & Match

Breezway gives you the option of interchangeable blades. For example, in bedrooms and bathrooms, consider having timber blades in the bottom half of the bay with clear glass blades in the top half.

Energy Efficient

Your choice of blades can significantly improve the energy efficiency of your windows. Tinted glass blades or solid timber blades help to reduce solar heat gain which is beneficial in hot climates.



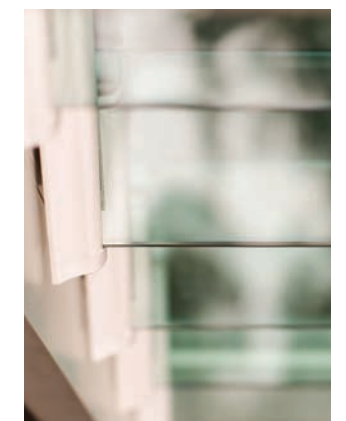
Timber

Timber blades let the breeze in and create a privacy screen at the same time. All timbers can be stained to blend in with your home.



Aluminium

Aluminium blades require minimal maintenance, don't rust and never need painting. Architects and designers love using them to create a very stylish visual screen.



Glass*

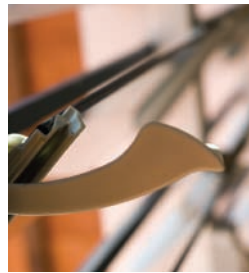
Obscure, etched, grey, green, bronze, toughened for extra strength and safety, or good old sparkling clear glass! As long as it's 6mm thick, almost every type of glass can be incorporated in an Altair™ Louvre Window.

*Please note: Availability of glass blades will need to be discussed with your local Breezway Distributor.



Step 3: Select a control method

Select from our range of handles listed below.



Standard handle

Designed to fit the contours of the human hand for easy use.



Low profile handle

Breezway's low profile handle is designed for bi-fold and some sliding doors. The unique shape and styling provides a slim line and functional fit that won't snag curtains or get in the way of blinds.



Ring pull handle

Ring pull handles (A13) are offered for up-high and out-of-reach louvre placement.



No handles

The award winning automated Altair Powerlouvre™ Window is controlled by motors concealed within the head of the frame. Only available ex Australia. Please contact your local Breezway Distributor for more information.

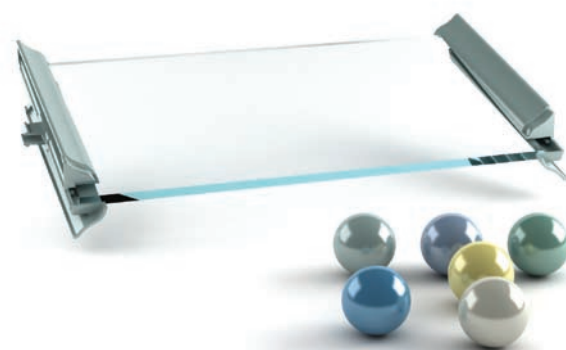
Cool air within easy reach

Breezway gives you the design flexibility to have your handles where you want them. Each handle can operate a maximum of 9 blades and can be positioned on the left or on the right, up high or down low.

Step 4: Select clip and handle colours*

Breezway Altair™ Louvre Windows are available in six different aluminium colours, clips and handles can be colour matched to four of these aluminium colours. This gives you the ability to colour match and provide consistency to the overall look and design.

* The colours and textures represented in this leaflet may vary under different light conditions and are indicative only.



Step 5: Contact your local Breezway Distributor

Visit our website www.breezway.com/malaysia and locate the 'Where To Buy' link from the drop down menu to find your nearest Breezway Louvre Window Distributor. Alternatively, you can call your local Breezway Office and speak to a qualified Louvre Window expert to help with your needs.

Breezway Altair™ Louvre Window Standard Heights

No. of Blades	Slimline Aluminium Surround Frame Heights		Galleries including Weatherstrip	
	Height 152mm	Height 102mm	Height 152mm	Height 102mm
2	345mm	-	330mm	-
3	485mm	335mm	470mm	320mm
4	625mm	425mm	610mm	410mm
5	765mm	515mm	750mm	500mm
6	905mm	605mm	890mm	590mm
7	1045mm	695mm	1030mm	680mm
8	1185mm	785mm	1170mm	770mm
9	1325mm	875mm	1310mm	860mm
10	1465mm	965mm	1450mm	950mm
11	1605mm	1055mm	1590mm	1040mm
12	1745mm	1145mm	1730mm	1130mm
13	1885mm	1235mm	1870mm	1220mm
14	2025mm	1325mm	2010mm	1310mm
15	2165mm	1415mm	2150mm	1400mm
16	2305mm	1505mm	2290mm	1490mm
17	2445mm	1595mm	2430mm	1580mm
18	2585mm	1685mm	2570mm	1670mm
19	2725mm	1775mm	2710mm	1760mm
20	2865mm	1865mm	2850mm	1850mm
21	3005mm	1955mm	2990mm	1940mm
22	-	2045mm	-	2030mm
23	-	2135mm	-	2120mm
24	-	2225mm	-	2210mm
25	-	2315mm	-	2300mm
26	-	2405mm	-	2390mm
27	-	2495mm	-	2480mm
28	-	2585mm	-	2570mm
29	-	2675mm	-	2660mm
30	-	2765mm	-	2750mm
31	-	2855mm	-	2840mm
32	-	2945mm	-	2930mm
33	-	3035mm	-	3020mm

- This chart indicates standard window heights corresponding to the number of full blades used in standard Breezway Louvre Window frames. For window heights differing from our standard dimensions, a fixed blade can be added to accommodate the difference.
- Galleries can be fitted to a number of different window fabricator's frames, please contact your fabricator for their standard window heights.
- For gallery height only, subtract 10mm from these standard heights.