

Building the future in steel



Stramit

Building Products



STRAMIT BUILDING PRODUCTS IS A MAJOR AUSTRALIAN MANUFACTURER OF ROLL-FORMED STEEL BUILDING PRODUCTS, INCLUDING ROOF AND WALL CLADDING, GUTTERING AND FASCIA, PURLINS, FORMWORK AND STEEL FRAMING.

THESE PRODUCTS, ALONG WITH COMPLEMENTARY PRODUCTS AND SERVICES, ARE DELIVERED THROUGH A NETWORK OF 25 MANUFACTURING AND DISTRIBUTION CENTRES, STRATEGICALLY LOCATED TO ENSURE COVERAGE OF MAJOR METROPOLITAN AND REGIONAL MARKETS.





A strong corporate foundation

Stramit Building Products is part of the Fletcher Building Group, one of the largest building product groups in Australasia.

Fletcher Building Limited is a New Zealand success story, with a history dating back to the 1860s. Since being publicly listed in 2001 it has enjoyed spectacular success and growth.

Fletcher Building Limited has interests in New Zealand, Australia and around the Pacific. Fletcher Building Limited Australia's portfolio of businesses includes roll-formed steel construction products (Stramit Building Products), building and construction sands (Rocla Quarry Products), concrete drainage and construction products (Rocla Pipeline Products), glasswool and foil insulation (Fletcher Insulation), as well as a separate laminates and panels division (The Laminex Group).

strength

leadership

STRAMIT BUILDING PRODUCTS' VISION IS TO BE THE LEADING BUILDING PRODUCTS AND STEEL SOLUTIONS BUSINESS ACROSS AUSTRALIA.

THIS WILL BE ACHIEVED BY MAKING STRAMIT A GREAT PLACE TO WORK, FOCUSSED ON CUSTOMERS, BEING INNOVATIVE AND CONTINUALLY IMPROVING IN ALL WE DO.





Australian Design Award

A reputation for innovation

Stramit Building Products was a pioneer in the roll-forming of high tensile steel building products, with a long history of innovation and dedication to continuous improvement.

Many Stramit® products are industry firsts and several have become industry standards. In 1995 the revolutionary Stramit Speed Deck Ultra® concealed fixed decking won an Australian Design Award, setting the standard for engineered roof design.



innovation



solutions

A provider of building solutions

Stramit Building Products is dedicated to creating value for its customers in the commercial, residential, distributor and shed markets. Sales are customer-focused and based on improving the customer's business through beneficial working partnerships.

Technical support includes a range of product data and installation literature in formats suited to customer needs, as well as Technical Services Managers in each region to help builders, engineers and designers reduce costs and maximise building performance.



A dedication to quality

The performance and reliability of Stramit® products is based on a dedication to continuous improvement in quality control and compliance with the latest Australian and international standards.

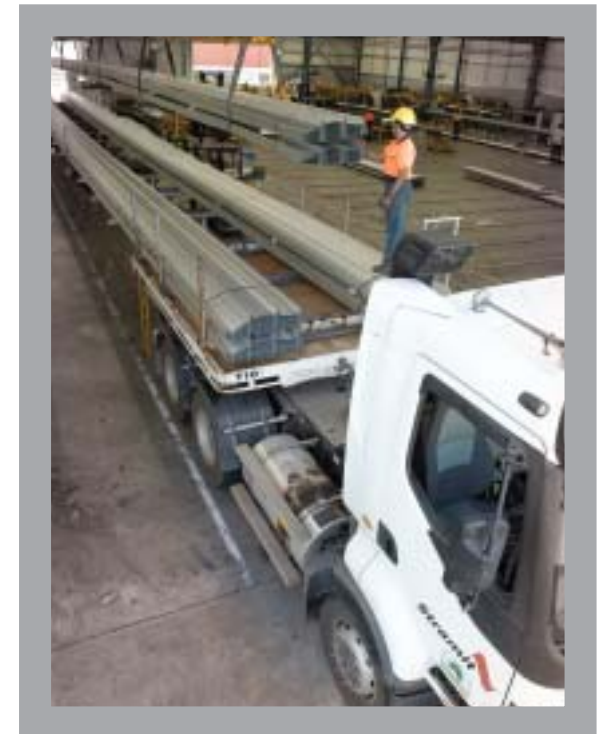
The quality of all Stramit® products is supported by research and development at the company's R&D facilities, where in-house product testing is carried out on an ongoing basis. Stramit Building Products also has alliances with leading independent tertiary and engineering institutions.

service

A commitment to customer service

Customer relationships are built on business understanding, flexibility, service, systems support and product innovation. The focus is on ease of transactions, accurate on-time delivery and customer relationships.

Stramit Building Products' policy is to deliver the right products on time, every time. The latest quality control systems are used to ensure accuracy and consistency in packaging, transport and handling. Stramit® products can be ordered with confidence, regardless of the size or location of the building project.





resources

A single source of building components

Stramit Building Products provides an all-inclusive service by stocking complementary products such as clear roofing, insulation, fibreglass blanket, roofing mesh, vents, fasteners, sealants, etc.

This “one-stop shop” service gives customers the convenience of dealing with a single supplier for their complete requirements.

A valuable information resource

Stramit Building Products produces a wide range of support literature, including brochures, technical specifications, installation procedures, design guides and load tables, as well as a quarterly magazine highlighting outstanding projects that have benefited from Stramit® products and services.

The Stramit Building Products website brings all this information together at a single point, with brochures and data in electronic format, product details such as profiles and dimensions, availability details, photographs of installations and much more at www.stramit.com.au



www.stramit.com.au

commercial

Steel cladding: light, strong and stunning

From traditional corrugated sheeting to state-of-the-art concealed fixed decking and wall cladding, Stramit® products have contributed to some of the most inspiring and innovative buildings in Australia.

Steel cladding is lightweight, strong, economical and attractive. Stramit® cladding products allow architects to stretch their imaginations and create forms that would be impossible in almost any other material.





Reinventing the great Australian roof

The revival of profiled steel sheeting as “the great Australian roof” reflects a desire for practical, attractive, energy-efficient alternatives. Design flexibility, security, and reliable quality are more reasons why owners and builders choose steel roofing.

Stramit Building Products manufactures a full range of roof and wall cladding profiles, guttering, fascia and downpipes, as well as structural products such as wall and floor framing sections, purlins, top hats and battens.

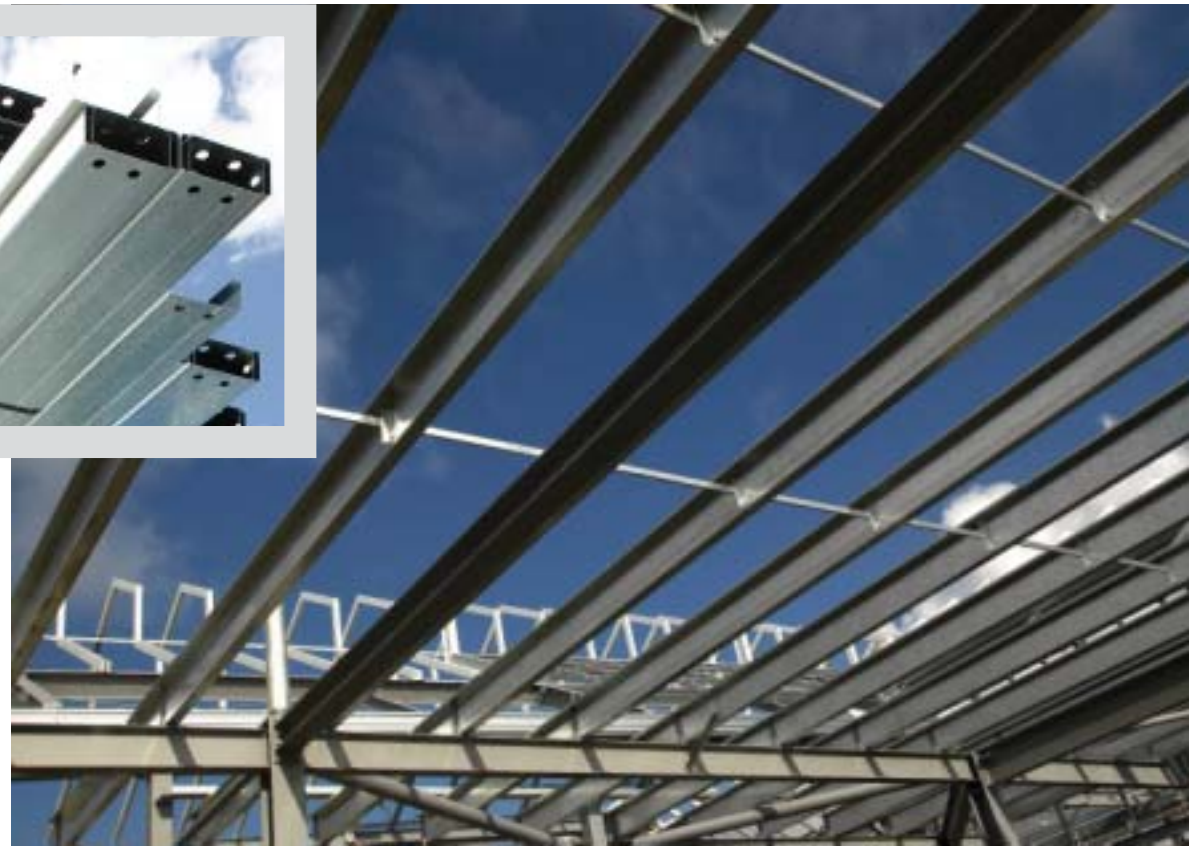
residential

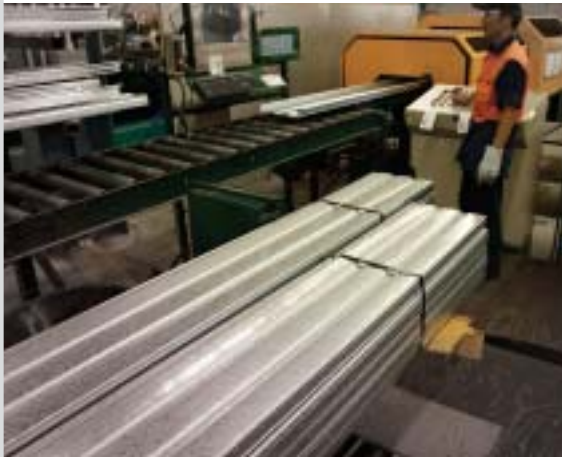
structural

Structural sections engineers can depend on

Purlins are important structural elements and must be manufactured exactly to specification. Stramit® purlins are manufactured from high tensile steel (450 MPa minimum yield stress) with a high quality galvanised coating (minimum Z350).

For larger projects, special purlins can be manufactured, including high performance Extacta® purlins, lappable downturn-lip and lipless sections, along with a full range of accessories, such as Stramit® Boltless Bridging. Technical Services Managers are also freely available for support and advice.





Economical solutions for concrete slabs

Permanent metal formwork saves time, labour and materials for builders. Engineers also take advantage of composite action to optimise slab design and create more efficient, economical structures.

Stramit Condeck HP® composite formwork is more than a product – it is a system solution for the efficient construction of suspended concrete floors, designed to maximise the performance and economy of composite slabs. Individual benefits (savings in time, labour, formwork and reinforcement) combine to provide substantial overall cost savings on large projects.

formwork

engineered

Quality components for engineered buildings

Many suppliers of sheds and garages depend on Stramit® cladding and framing products to ensure the longevity of their structures. For most people, a shed, garage or carport is a long-term investment. It makes sense to buy a quality product that is built to cope with the harsh Australian climate.

Shed manufacturers know that Stramit® products are made from high quality steel and backed by technical know-how based on decades of testing under Australian conditions.



buildings





Putting the strength of steel into homes

Home builders are turning to steel framing because its flexibility allows them to add variety and interest to roof shapes and interior ceiling lines. Steel frames and roof trusses are also termite-proof, fire-proof and maintain the straight lines of the roof throughout the life of the house.

Stramit Building Products supplies complete engineered framing systems, fully designed and detailed, manufactured under strict quality control and delivered to site ready to erect with easy-to-follow plans.

steel framing



® Trade marks of Stramit Corporation Pty Limited ABN 57 005 010 195
Trading as Stramit Building Products. A member of the Fletcher Building Group.

© Stramit Corporation Pty Limited, September 2007

