



HAMMERSMITH

Staircase and Handrail Parts

2 CONTENTS

HANDRAIL & BRACKETS

Designer Rail	page 3
Ezirail 2.0	page 4-5
Heritage Rail	page 6
Zipbolt	page 7
Victorian Rail	page 8
Mono Rail	page 8
Handrail Brackets	page 9

BALUSTERS

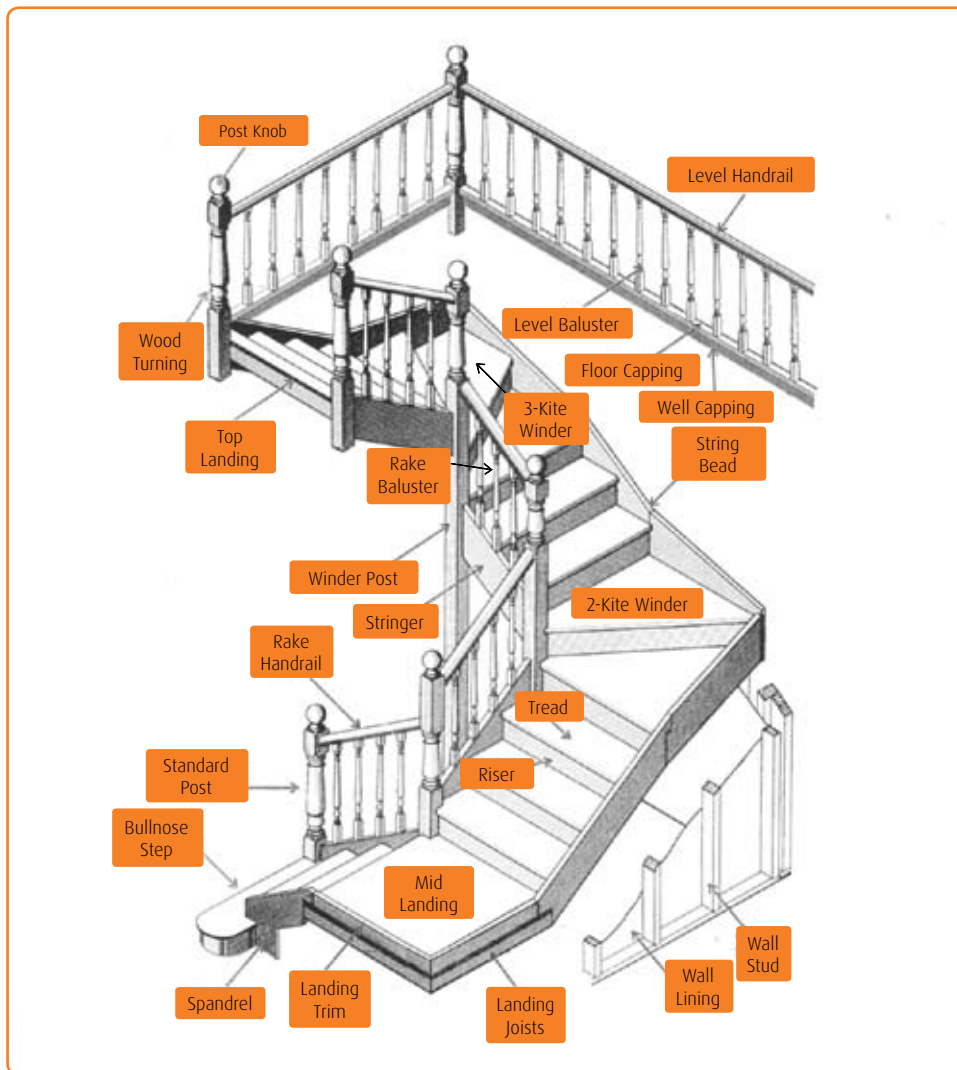
Metal	page 10-11
Timber	page 11

POSTS

Traditional Posts	page 12
Extension Posts	page 13
Post Tops	page 13
Prestige Posts	page 14-15

TREADS, RISERS & STRINGERS

Treads, Risers & Stringers	page 16
----------------------------	---------



Product Specifications : All measurements shown in this brochure are in millimetres (mm) and should be regarded as a guide only. Slight variations may occur over production runs.

Product uses : Due to the vast range of uses our products could be put to, the suggestions that we make should only be seen as a guide, and offers no guarantee regarding the suitability of a product for any particular use.

Custom Manufacturing : We do have the facilities to manufacture custom product. We encourage you to speak to us if you have an idea on a product that we do not show in this brochure.

For further, up to date information, please visit our website; hammersmith.com.au



Designer Rail	CODE	DESCRIPTION	OTHER INFORMATION
	IF130	Drilling Jig	The Designer Rail is a brand new product range that combines the warmth of timber with the modern look of stainless steel. All the metal fittings are manufactured in a 316 grade stainless steel, which means they are suitable for both interior and exterior use. The range of applications the Designer Rail could be used on, include; corridor handrailing in hotels, hospitals and aged care (it conforms to Australian Standard AS1428.1-2001 Design for Access and Mobility), balcony handrailing for exterior balustrade and wall rail for domestic stairs. Apart from the unique look, the other great selling feature is the ease of assembly. The key to this is the plastic connector (IF131) that along with the use of the drilling jig (IF130) allows the easy joining of the stainless steel fittings to the end of the 43mm round timber handrail. A small amount of silicone on the joiner will help to create a strong hold.
	IF131	Plastic Connector	
	JH070	43 Ø Handrail	
	JH071	Radiused End Cap	
	JH072	Flat End Cap	
	JH073	Half Ball End Cap	
	JH074	90° Terminating Bend	
	JH075	90° Radiused Bend	
	JH076	90° Acute Bend	
JH077	Straight Connector		
JH078	Adjustable Bend		

For available timber types and finishes, please refer to the current price list.

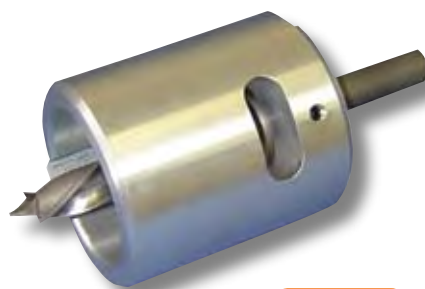


Ezrail 2.0	CODE	DESCRIPTION	OTHER INFORMATION
	ID115	60 x 16 Ø Joining Dowel	Use to join the bends to the handrail.
	IF121	High Usage Drilling Jig	Drills the ends of the handrail with a 16 Ø hole to enable accurate joining with bends.
	IF147	Low Usage Drilling Jig	Drills the ends of the handrail with a 16 Ø hole to enable accurate joining with bends.
	JH130	50 Ø Handrail	Conforms to Australian Standard AS1428.1-2001 "Design for Access & Mobility".
	JH131	90° Bend (55mm Internal Radius)	Use on internal or external 90 degree corners; or where you need to return to the wall.
	JH132	45° Bend	Use on internal or external 45 degree corners.
	JH133	37° Ease Up	Use on stairs to change the handrail from the horizontal plane to a 37 degree incline.
	JH134	37° Ease Over	Use on stairs to change the handrail from a 37 degree incline to the horizontal plane.
	JH135	End Cap	The easy way to round the end of the handrail.
	JH136	180° Over Scroll	Maintains a 50mm clearance through 180 degrees.

For available timber types, please refer to the current price list.



ID115



IF121



IF147

EZIRAIL 2.0 - The Facts ...

Why is it called EZIRAIL 2.0 ?

Our original concept of the EZIRAIL, when we released it 10 years ago, was to produce a simple but stylish round hand rail design that could easily be combined with various angled bends to produce continuous timber hand railing for use in domestic, commercial and aged care applications.

The 2.0 is our way of showing the first substantial design change to the range since its original release. These changes include;

- Changing the design of the Rail by increasing the flat from 19mm to 32mm.
- Totally revamping the range of bends available, so that now all of the bends have a flat on the bottom that matches the handrail exactly.

These changes not only simplify the range, but also improve the overall quality, look and ease of installation.

Does it conform to Australian Standards ?

The rail and bends have been designed to meet Australian Standard AS1428.1-2001 Design for Access and Mobility. This is critical when used in aged care facilities, hospitals, wheel chair ramps etc.

For domestic use, these standards do not generally need to be met. For more information on the standards, go to www.standards.com.au

What timber does it come in ?

A select grade Victorian Ash (also known as Tasmanian Oak or Australian Oak). This timber has been chosen for a number of reasons;

- It is sourced from Australian sustainably managed forests, which means it is readily available and not subject to wild price fluctuations due to changes to the exchange rate of the Australian dollar.
- It is hard, reasonably colour consistent (pink-grey colour), and only contains occasional minor blemishes.
- It can be finished with paint, clear polish or stained to match other timbers.

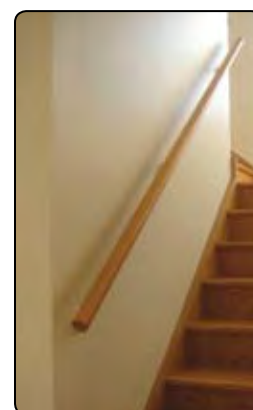
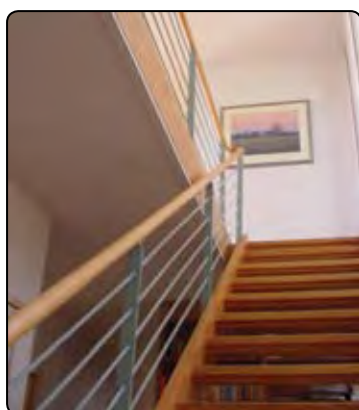
How does the drilling jig work ?

The drilling jig is used to more easily join the bends and end cap to the handrail.

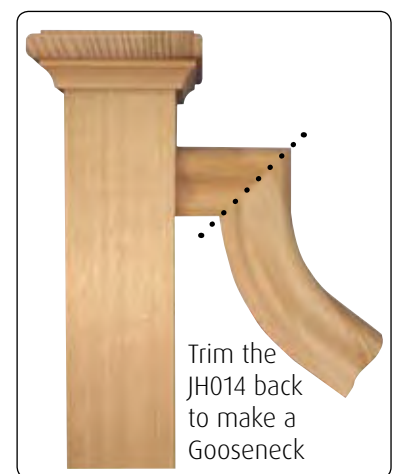
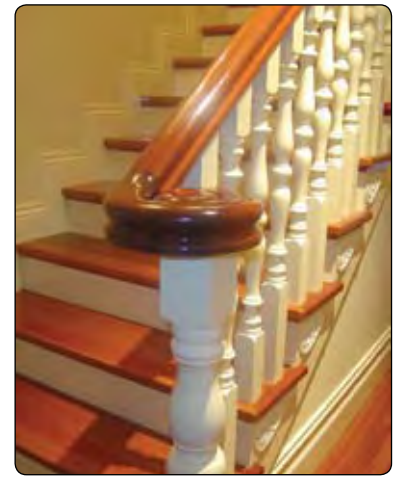
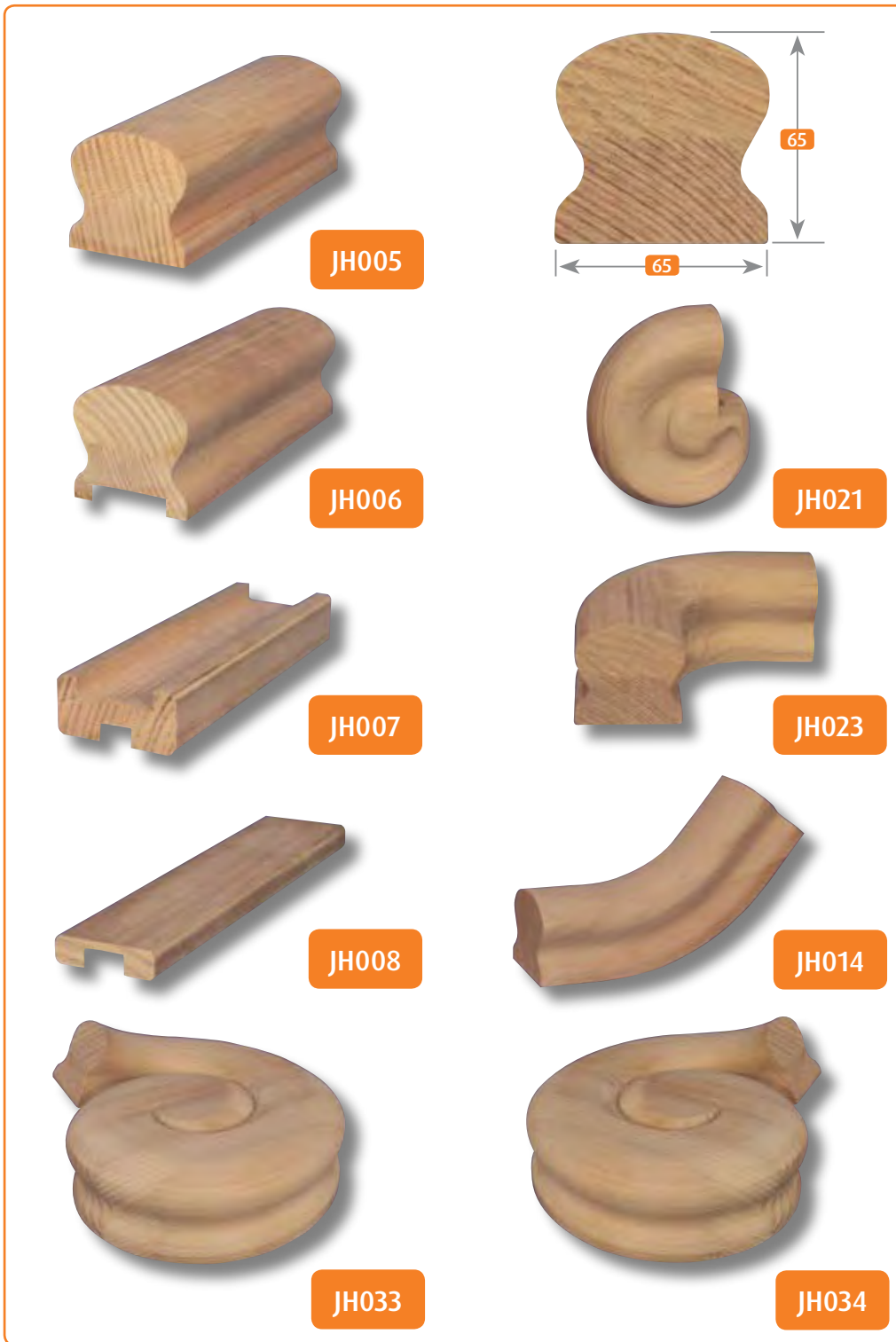
Once you have cut the handrail to the desired length, the jig will allow you to accurately drill a 16mm hole in the centre of the end of the handrail; to which an end cap or bend (comes pre-drilled) can be joined using a joining dowel (ID115) with a timber glue. Once the glue has dried, a light sanding may be required to smooth the join before finishing with a paint or polish coating.

If you have only a few holes to drill, then you could probably get away without using the jig and doing it free-hand; whereas if you have more than a few holes to drill, then the Low Usage version (IF147) would be perfect.

For installers who plan on using the EZIRAIL on a regular basis, the High Usage version (IF121) would be a better long term option.



6 HERITAGE RAIL



Heritage Rail	CODE	DESCRIPTION	OTHER INFORMATION
	JH005	Handrail without Rebate	
	JH006	Handrail with Rebate	42 x 10mm rebate to suit timber balusters.
	JH007	Base Rail with Rebate	42 x 10mm rebate on one side and 16 x 10mm rebate on the other.
	JH008	Infill with Rebate	Use for infill between timber balusters or rotate and use for 16sq metal balusters
	JH014	53° Ease up	Cut back to 37° for an ease up, or mitre one end and create a gooseneck.
	JH021	End Scroll	Fix to the end of the handrail using a 16mm dowel.
	JH023	Level ¼ Turn	
	JH033	Left Volute (aka Scroll)	Overall width is 260mm.
	JH034	Right Volute (aka Scroll)	Overall width is 260mm.

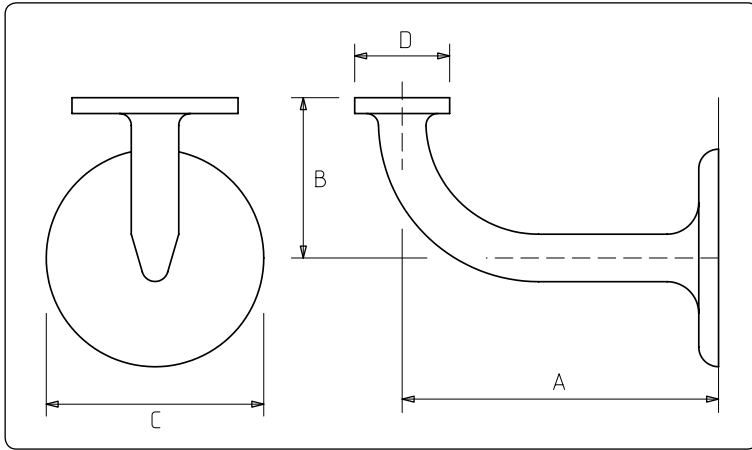
For available timber types, please refer to the current price list.

8 VICTORIAN RAIL & MONO RAIL



	CODE	DESCRIPTION	OTHER INFORMATION
Victorian Rail & Mono Rail	Victorian Rail		
	JH224	Left Scroll (aka Volute)	Overall width is 270mm.
	JH225	Right Scroll (aka Volute)	Overall width is 270mm.
	JH230	53° Ease Up	Cut back to 37° for an ease up, or mitre one end and create a gooseneck.
	JH235	Handrail	
	Mono Rail		
	JH050	Handrail	
	JH062	End Scroll	

For available timber types, please refer to the current price list.



IF446



IF449



IF450
IF451



IF500



IF452



IF445

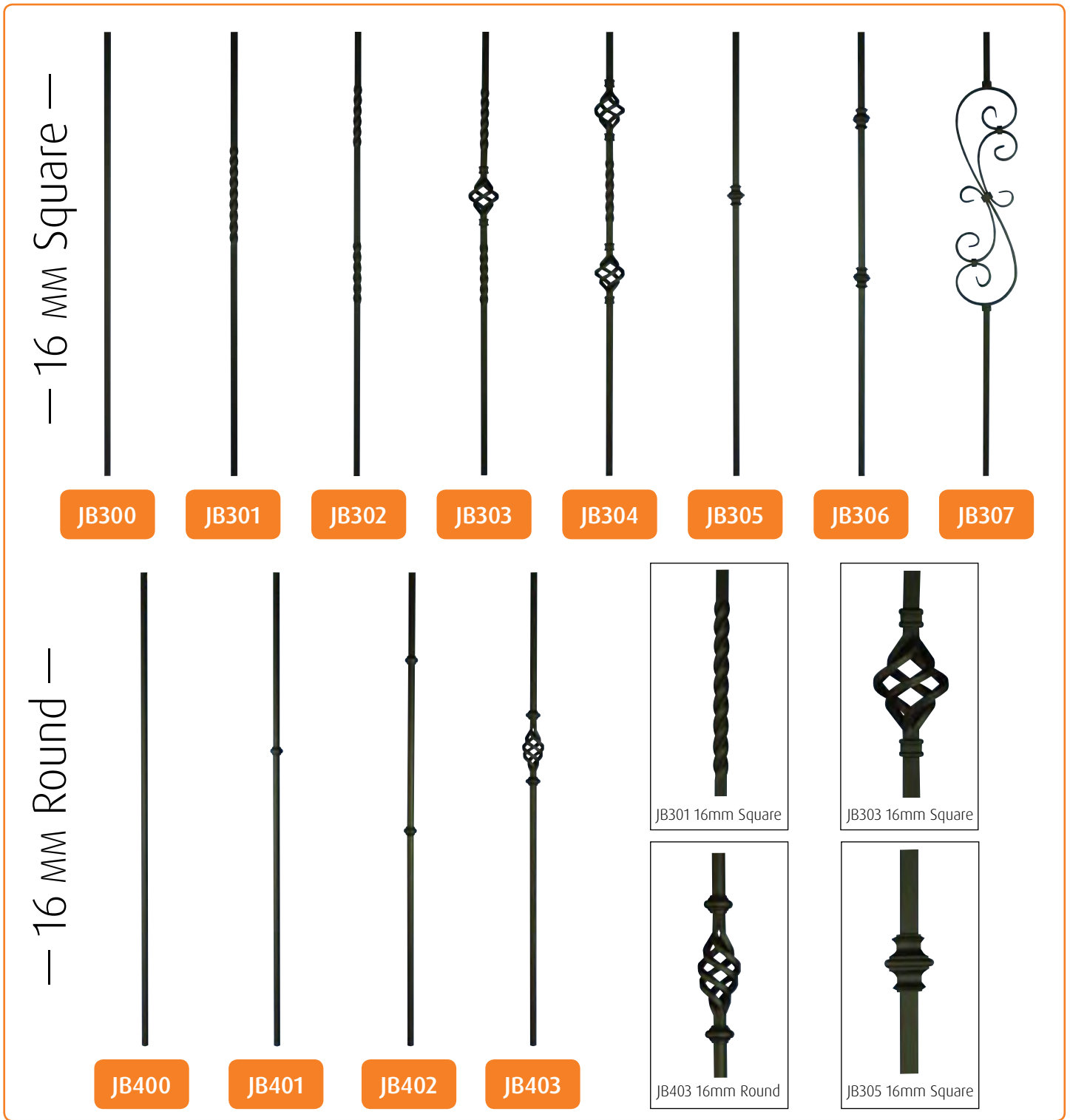


JR002

Handrail Brackets	CODE	DESCRIPTION	A (mm)	B (mm)	C (mm)	D (mm)	OTHER INFORMATION
	IF445	Upright Bracket	60	-	55	25	Suits all of our handrail designs.
	IF446	Deluxe Bracket	80	40	55	25	Suits all of our handrail designs.
	IF449	Standard Bracket	80	45	55	25	Suits all of our handrail designs.
	IF450	Budget Bracket	85	45	55	19	Suits all of our handrail designs, except JH070.
	IF451	Budget Bracket	65	45	55	19	Suits all of our handrail designs, except JH070.
	IF452	Bracket for 12mm Glass	85	65	45	25	Also available with a curved plate to suit JH070.
	IF500	Heavy Duty Bracket	75	55	65	20	Also available with a curved plate to suit JH070.
JR002	Wall Bracket Rosette	20	-	68	-	Not suitable for use with bracket IF452 and IF500.	

For available finishes, please refer to the current price list.

10 METAL BALUSTERS



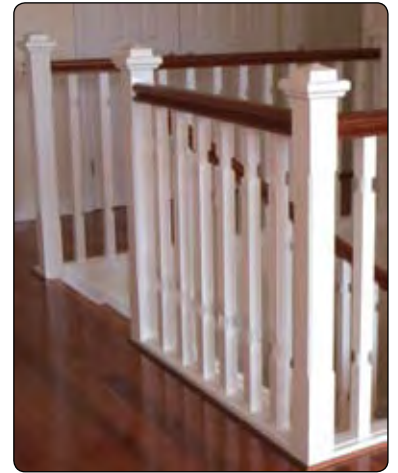
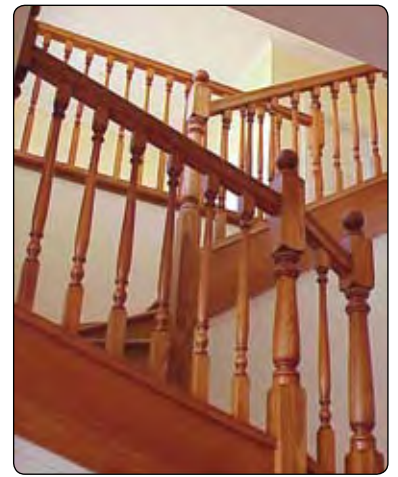
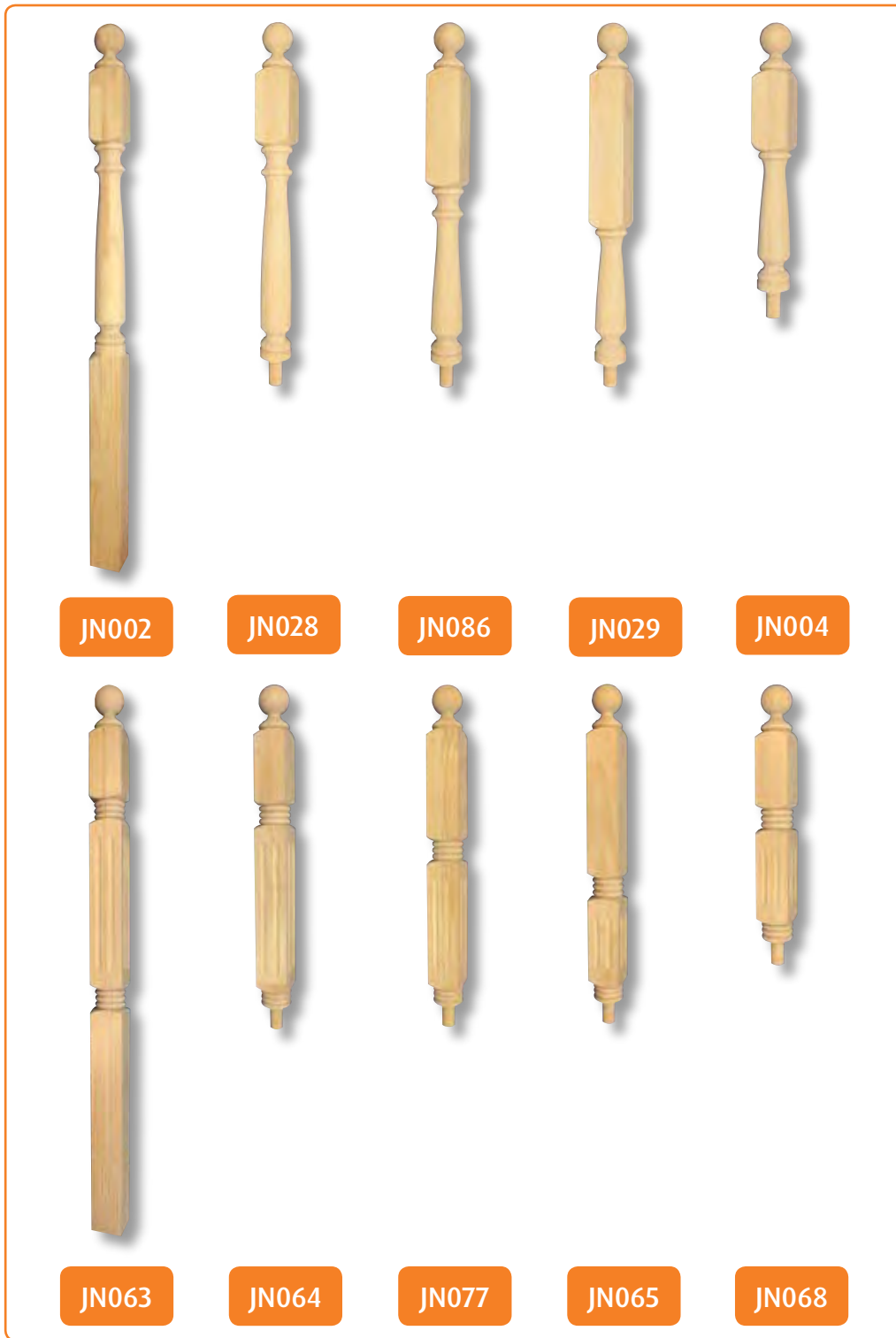
Metal Baluster	CODE	DESCRIPTION	OVERALL SIZE	OTHER INFORMATION
	JB300	16mm Square Plain	1090 x 16 sq	<p>Balusters are hollow with a 1.5mm wall thickness, which means easy to cut, yet still strong enough not to bend.</p> <p>All designs are finished in a smooth Satin Black, which means easy cleaning.</p> <p>The length of each baluster is 1090mm, which is suitable for the rake, level and cut-string of a staircase.</p>
	JB301	16mm Square Single Twist	1090 x 16 sq	
	JB302	16mm Square Double Twist	1090 x 16 sq	
	JB303	16mm Square Single Cage	1090 x 16 sq	
	JB304	16mm Square Double Cage	1090 x 16 sq	
	JB305	16mm Square Single Knuckle	1090 x 16 sq	
	JB306	16mm Square Double Knuckle	1090 x 16 sq	
	JB307	16mm Square "S" Scroll	1090 x 16 sq	
	JB400	16mm Round Plain	1090 x 16 Ø	
	JB401	16mm Round Single Knuckle	1090 x 16 Ø	
	JB402	16mm Round Double Knuckle	1090 x 16 Ø	
	JB403	16mm Round Single Cage	1090 x 16 Ø	



Metal & Timber Balusters	CODE	DESCRIPTION	OVERALL SIZE	OTHER INFORMATION
	JB310	12.7mm Square Level Baluster	980 x 12.7 sq	Balusters are hollow with a 1.2mm wall thickness. Material is 304 stainless steel in a satin finish. Rake baluster is measured tip-to-tip, and is based on a 37° pitch. Special lengths can be cut on request.
	JB311	12.7mm Square Rake Baluster	855 x 12.7 sq	
	JB312	19mm Square Level Baluster	980 x 19 sq	
	JB313	19mm Square Rake Baluster	855 x 19 sq	
	JB405	16mm Round Level Baluster	995 x 16 ø	
	JB406	16mm Round Rake Baluster	855 x 16 ø	
	JB000	Plain Baluster	965 x 42 sq	
	JB002	Tasman Baluster	965 x 42 sq	Length of top square is 100mm. Length of turning is 550mm.
	JB008	3 Rings 2 Flutes Baluster	965 x 42 sq	Length of top square is 140mm. Length of turning is 560mm.
	JB024	No.1 Baluster	965 x 42 sq	Length of top square is 130mm. Length of turning is 570mm.
	JB081	Chamfered Baluster	965 x 42 sq	Length of top square is 130mm. Length of chamfer is 560mm.
JB135	Regent Pin Top Baluster	1000 x 42 sq	Diameter of top pin is 25mm. Length of turning is 800mm.	

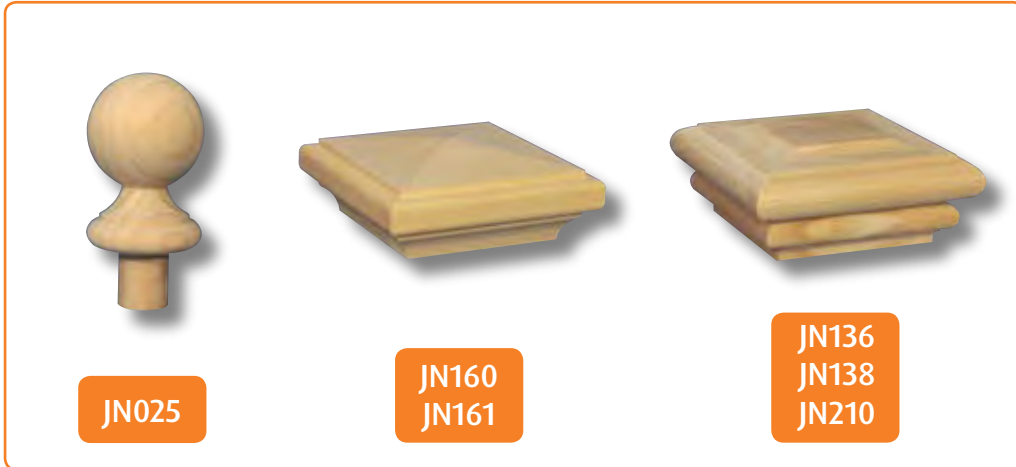
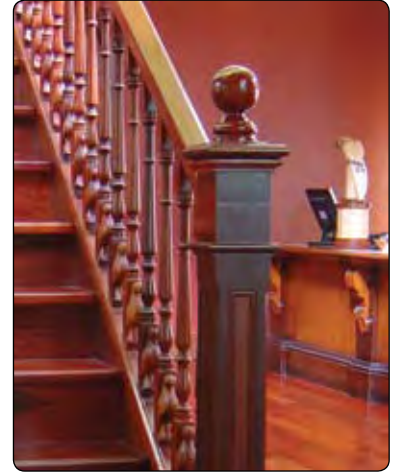
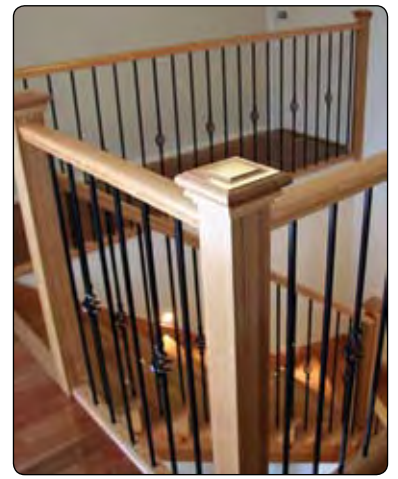
For available timber types and finishes, please refer to the current price list.

12 TRADITIONAL POSTS



	CODE	DESCRIPTION	OVERALL SIZE	OTHER INFORMATION
Traditional Posts	Tasman Range (Refer to page 2 of the brochure to see where each type of post is used on a staircase.)			
	JN002	Standard Post	1500 x 90 sq	Length of top block is 200mm. Length of bottom block is 625mm.
	JN004	3-Kite Winder Post with Pin	670 x 90 sq	Length of top block is 200mm.
	JN028	Standard Post with Pin	880 x 90 sq	Length of top block is 200mm.
	JN029	Mid-Landing Post with Pin	880 x 90 sq	Length of top block is 400mm.
	JN086	Top-Landing Post with Pin	880 x 90 sq	Length of top block is 300mm.
	3 Rings & 2 Flutes Range (Refer to page 2 of the brochure to see where each type of post is used on a staircase.)			
	JN063	Standard Post	1500 x 90 sq	Length of top block is 200mm. Length of bottom block is 625mm.
	JN064	Standard Post with Pin	880 x 90 sq	Length of top block is 200mm.
	JN065	Mid-Landing Post with Pin	880 x 90 sq	Length of top block is 400mm.
	JN068	3-Kite Winder Post with Pin	670 x 90 sq	Length of top block is 200mm.
	JN077	Top-Landing Post with Pin	880 x 90 sq	Length of top block is 300mm.

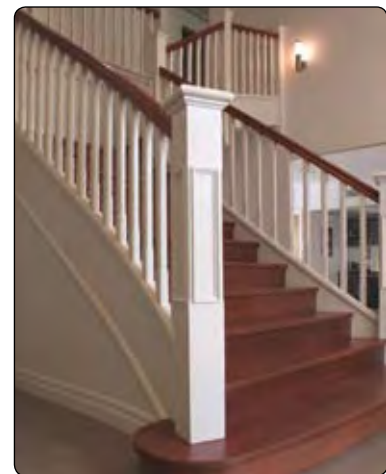
For available timber types, please refer to the current price list.



CODE	DESCRIPTION	OVERALL SIZE	OTHER INFORMATION
JN000	Plain Post	1500 x 90 sq	
JN025	Ball Top	115 x 85 ø	Diameter of pin is 38mm.
JN136	Post Cap with Scalloped Top	For 90sq Post	Drops over the top of a 90 x 90 post.
JN138	Post Cap with Scalloped Top	For 115sq Post	Drops over the top of a 115 x 115 post.
JN210	Post Cap with Scalloped Top	For 155sq Post	Drops over the top of a 155 x 155 post.
JN160	Post Cap with Pyramid Top	For 90sq Post	Drops over the top of a 90 x 90 post.
JN161	Post Cap with Pyramid Top	For 115sq Post	Drops over the top of a 115 x 115 post.
JX001	650mm Extension Post	650 x 90 sq	Diameter of hole is 38mm.
JX002	970mm Extension Post	970 x 90 sq	Diameter of hole is 38mm.
JX003	1520mm Extension Post	1520 x 90 sq	Diameter of hole is 38mm.

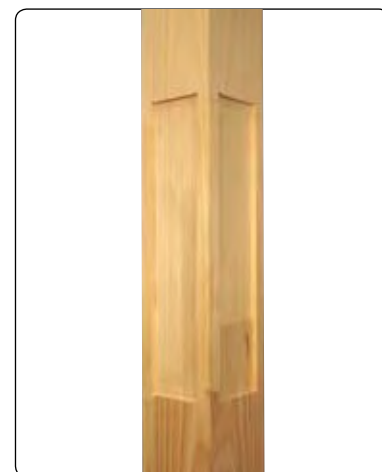
Extension Posts & Post Tops

For available timber types, please refer to the current price list.



	CODE	DESCRIPTION	OVERALL SIZE	OTHER INFORMATION
Posts & Skirts	JN213	Plain 155sq Post	1500 x 155sq	All posts are made from finger jointed & laminated Pine. The recessed posts come recessed on 4 sides, ready for the large versions of either the flat or pyramid drop-in panels (JN222 or JN226 for 155sq posts & JN242 or JN246 for 115sq posts.) Depth of recess is 15mm. All posts are supplied with JM002 Mould.
	JN214	Recessed 155sq Post	1500 x 155sq	
	JN230	Plain 115sq Post	1500 x 115sq	
	JN234	Recessed 115sq Post	1500 x 115sq	
	JN148	Skirt for 115sq Post	570 x 147sq	Skirts are supplied as four 16mm thick panels, ready to fit around the post. Special mitre-lock corners allow for easy assembly.
	JN228	Skirt for 155sq Post	570 x 187sq	
	JM002	Post and Skirt Mould	25 X 15	

For available timber types, please refer to the current price list.



Drop-In Panels	CODE	DESCRIPTION	OVERALL SIZE	OTHER INFORMATION
	JN220	Small Flat Drop-In Panel for 155sq Post	115 x 115	<p>Panels are supplied assembled ready to be dropped into a 14mm recess in the posts. The large panels are for a standard post on a staircase, whereas the small and medium panels are for a landing post.</p> <p>They are designed so that the moulding on the edges will sit proud of the surface of the post, with the flat or pyramid panel sitting below the surface.</p> <p>Overall size refers to the outside dimensions of the panel including the mould. If you wish to machine your own recess, make the width and height of the recess 10mm less than the overall size. For example, make the recess for JN246 to be 500 x 77 x 14mm.</p>
	JN221	Medium Flat Drop-In Panel for 155sq Post	332 x 115	
	JN222	Large Flat Drop-In Panel for 155sq Post	510 x 115	
	JN224	Small Pyramid Drop-In Panel for 155sq Post	115 x 115	
	JN225	Medium Pyramid Drop-In Panel for 155sq Post	332 x 115	
	JN226	Large Pyramid Drop-In Panel for 155sq Post	510 x 115	
	JN240	Small Flat Drop-In Panel for 115sq Post	87 x 87	
	JN241	Medium Flat Drop-In Panel for 115sq Post	332 x 87	
	JN242	Large Flat Drop-in Panel for 115sq Post	510 x 87	
	JN244	Small Pyramid Drop-In Panel for 115sq Post	87 x 87	
	JN245	Medium Pyramid Drop-In Panel for 115sq Post	332 x 87	
	JN246	Large Pyramid Drop-In Panel for 115sq Post	510 x 87	

For available timber types, please refer to the current price list.

16 TREADS, RISERS & STRINGERS



Treads, Risers & Stringers	CODE	DESCRIPTION	OVERALL SIZE	OTHER INFORMATION
	JT001	1000mm Tread	1000 x 285 x 33	
	JT002	1000mm Tread with Bullnose	1000 x 285 x 33	
	JT004	1200mm Tread	1200 x 285 x 33	
	JT005	1200mm Tread with Bullnose	1200 x 285 x 33	
	JT007	1200mm Tread (43mm Thick)	1200 x 285 x 43	
	JT010	1000mm Riser	1000 x 190 x 19	
	JT011	1200mm Riser	1200 x 190 x 19	
	JT015	Stringer	Random x 285 x 33	
	JT017	Wedge	180 X 32	20mm to 5mm taper. Used to hold treads & risers in place.

For available timber types, please refer to the current price list.

About Hammersmith ...

Since 1946, Hammersmith has been producing quality timber components for the Australian market place.

This brochure showcases the range of staircase parts that we manufacture and import, including our range of handrails, balusters, posts and treads.

All of our products have been designed to enhance the final look of the project they are being used for. For example, using a Prestige Post at the base of the staircase is a great way of giving the look of grandeur as compared to our regular stair post.

It is hoped that this brochure will serve a dual purpose; one is to provide a quality reference guide for our current customers for when they need to place an order. The other is for architects, designers and builders as a source of ideas on how to add value to a staircase.

With more than 65 years of experience behind us, we are not a company that dwells on its past, but rather a company that believes that innovative product development is our best way of success in the future.

Hammersmith Woodturners Pty Ltd

8-16 Hocking Street Brompton South Australia 5007

P.O. Box 27 Hindmarsh South Australia 5007

Phone: [08] 8346 8211 **Fax:** [08] 83460 0135

Email: sales@hammersmith.com.au **Website:** hammersmith.com.au

A.C.N 007 670 528 | A.B.N 14 007 670 528

HAMMERSMITH

Current as of December 2011