

ROC York

RY-45

PAT-PENDING

RY-45

3 axis adjustable hinge 5 fulcrums

Version

ZAMA

Finishing

Satin chrome "F1"

For panels

3' 0" x 7' 0"

Minimum door thickness

1 1/4"

Version

Reversible

Adjustments

X: Horizontal +3,-2

Y: Depth ±1

Z: Vertical ±2,5

Capacity

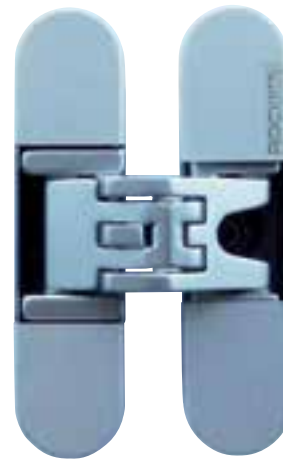
45 kg 2 hinges

60 kg 3 hinges

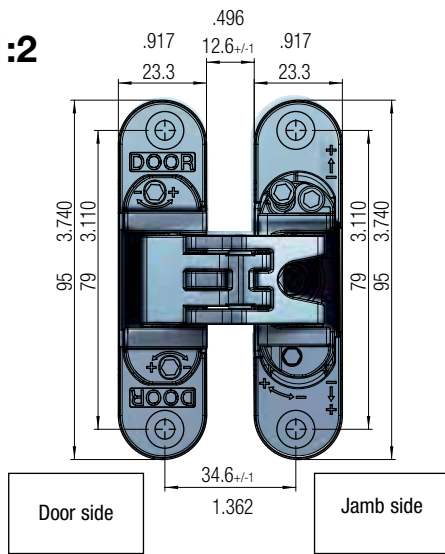
COVER



Satin chrome "F1"



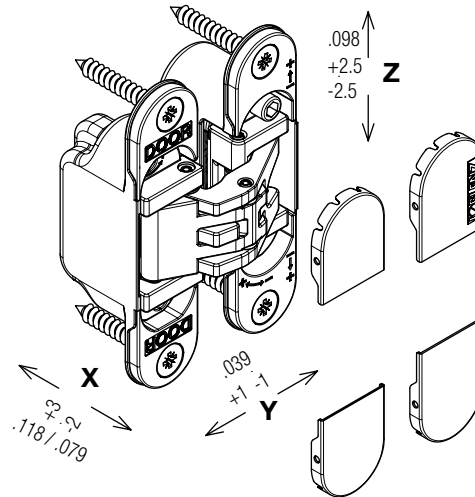
1:2



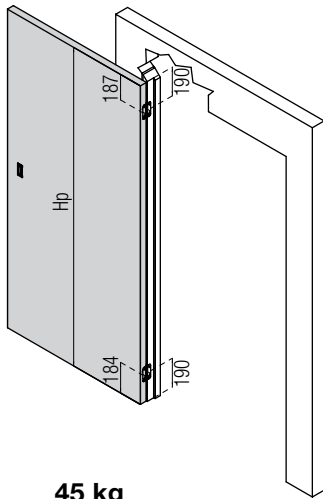
ROCyork

RY-45

PAT-PENDING

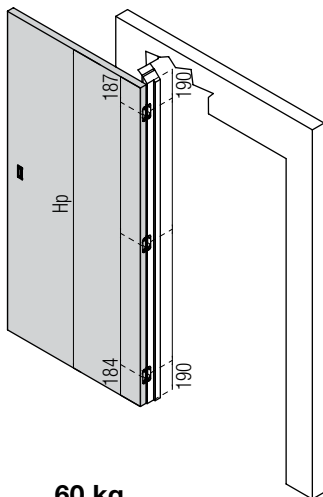
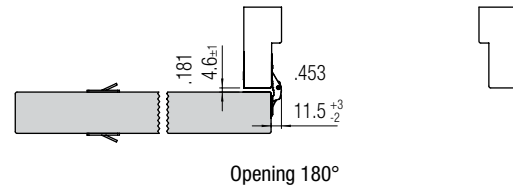
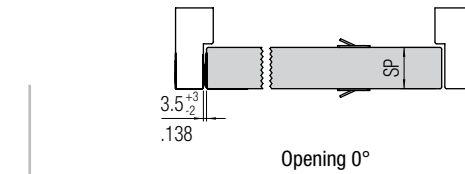


RY-45



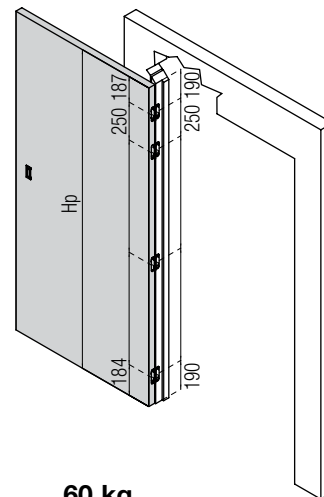
45 kg

Application no 2 hinges (For door leaves up to height H 2133mm or 84")



60 kg

Application no 3 hinges (For door leaves up to height H 2133mm or 84")



60 kg

Use 4 hinges for door leaf heights above 2133 mm or 84".

ROCyork

RY-45

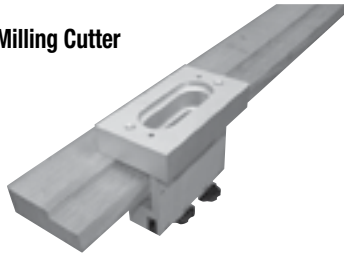
PAT-PENDING

RY-45

Accessories

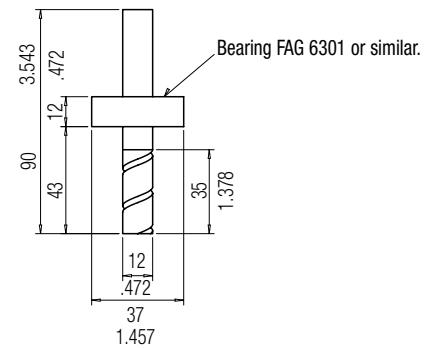
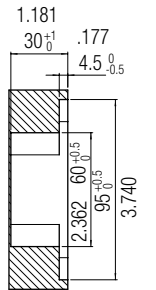
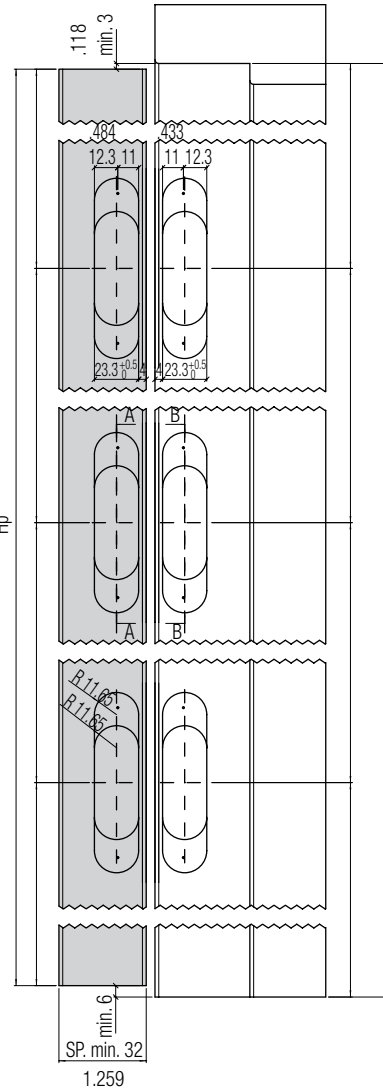
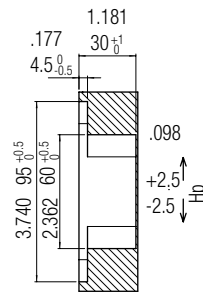
*Milling template

RY-45 RG Milling Cutter



RY-45 Milling cutter

*NOTE: for the preholes it is necessary to be provided with a drill bit of longer or equal length to the depth in which the milling cutter goes.



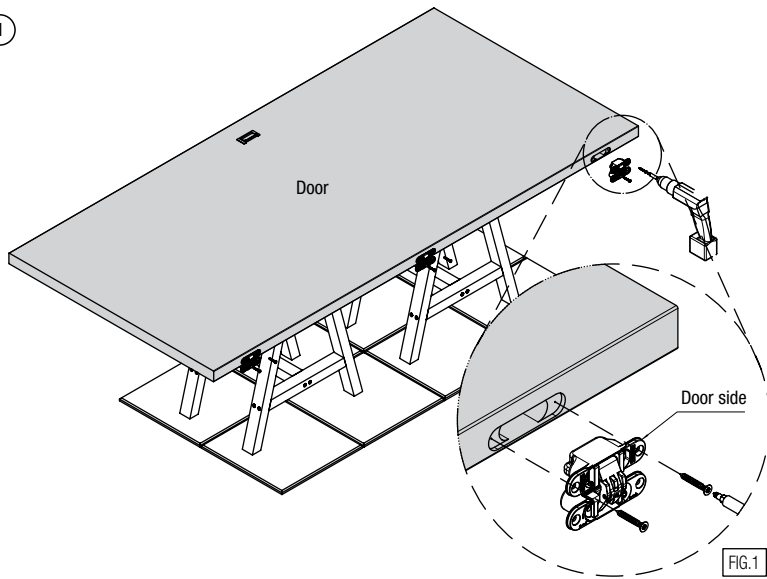
ROC York

RY-45

PAT-PENDING

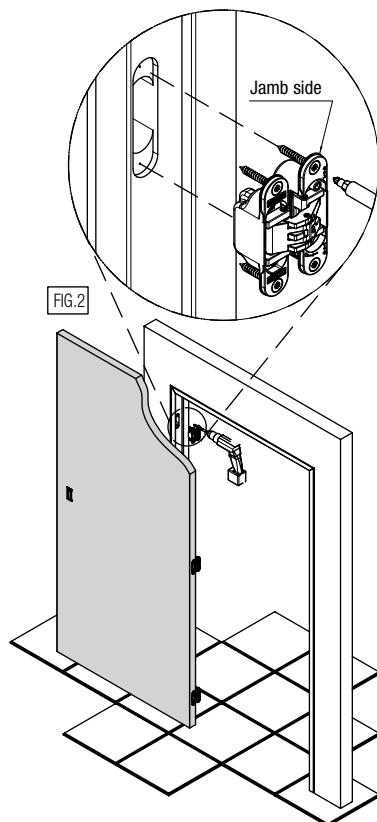
RY-45

①



*Set the hinges in the relative door leaf millings (fig.1) and fix them with the relative screws.

②



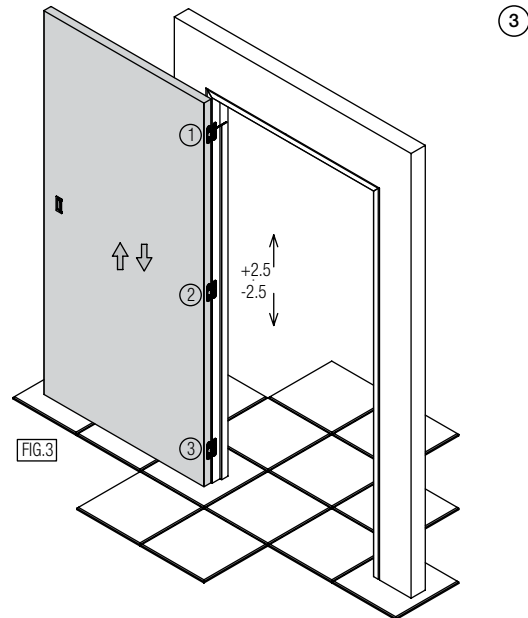
*Fix the door leaf to the jamb and insert the hinges into the millings(see picture 2). Fix the hinges with the specific screws.

ROC_{york}

RY-45

PAT-PENDING

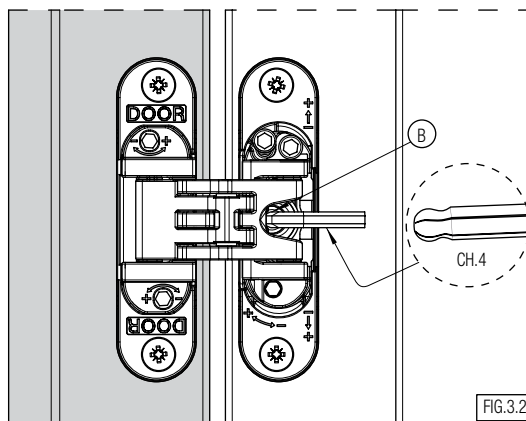
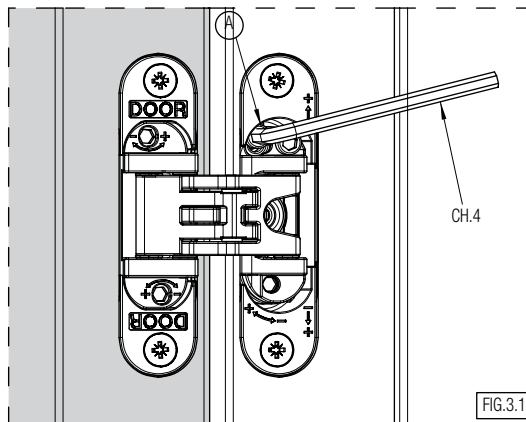
RY-45



*VERTICAL ADJUSTMENT

Loosen screw "A" on all hinges. (Fig. 3.1). Adjust the door hinge by turning pin "B" (fig. 3.2) Repeat the adjustment on all hinges by following the sequence as shown (Fig.3) so that the door weight is homogenously distributed on all door hinges. After having finished the adjustment, tighten all screws "A" (Fig. 3.1).

In case the panel weight is close to the maximum loading capacity, we suggest to use a wooden wedge under the panel.

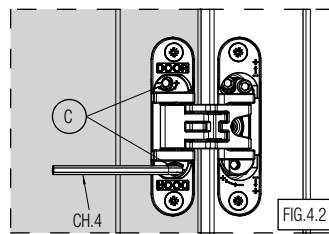
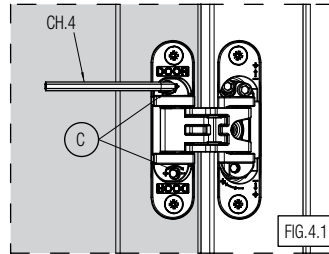
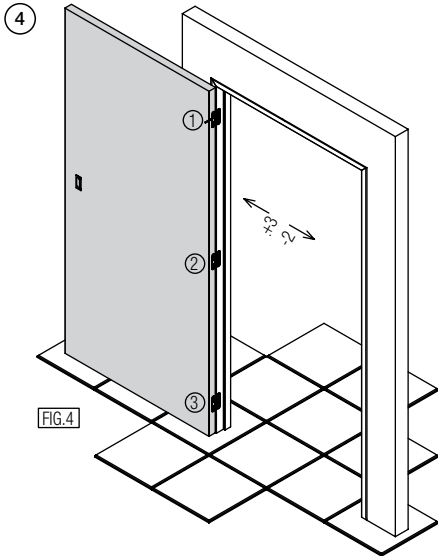


ROCyork

RY-45

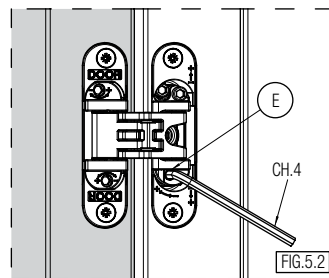
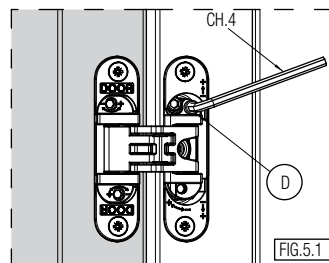
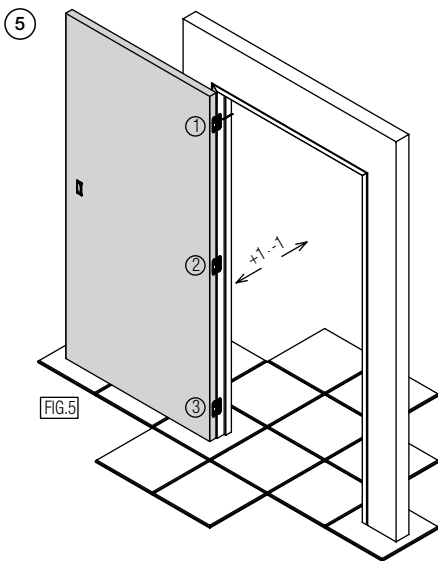
PAT-PENDING

RY-45



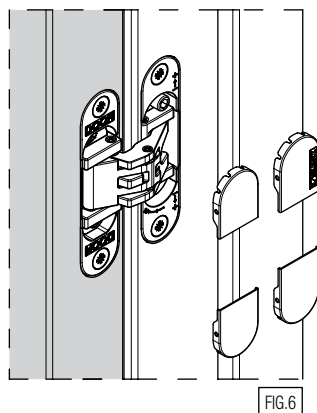
***HORIZONTAL ADJUSTMENT**

Adjust the door leaf by rotating pins „C“ (fig. 4.1-4.2). Repeat the adjustment on all hinges as shown in the sequence (fig. 4).



***DEPTH ADJUSTMENT**

Loosen screw “D” (Fig. 5.1). Adjust the door by turning pins “E” (Fig.5.2). Repeat the adjustment procedure on all other hinges following the sequence as shown (Fig. 5). After having finished the adjustment procedure proceed with the tightening of screws “D” (Fig. 5.1) on all hinges.



*Application of the frontal coverings (fig.6).
NB: the 2 smaller covers should go on the “DOOR” side.