

Studco launches all new Ezy-Pelmet®



A new member of the Ezy Finishing family has been introduced due to popular demand.



See over for details...



STUDCO
tough

Don't mess with this guy!

Turn to page 6 to find out why...

EZY pelmet



NEW

Ezy-Pelmet® is extremely versatile in its application, seen here being used as a recessed curtain pelmet above a window and as a ceiling perimeter feature against a wall.

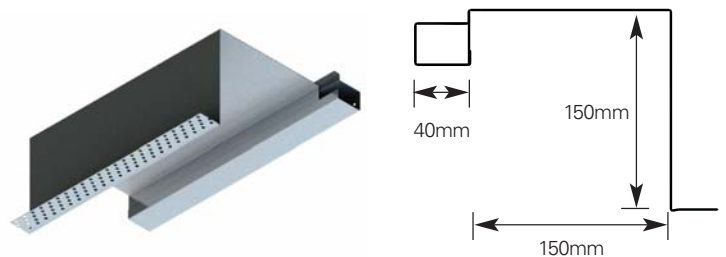
Ezy-Pelmet... luxury views made easy

The newest addition to the EZY family of flush-finish products adds a completely new dimension to the internal perimeter of square-set interiors. Window blinds disappear, feature lighting is cleverly concealed and vast panoramas open up before your eyes with the all new Ezy-Pelmet® from Studco.

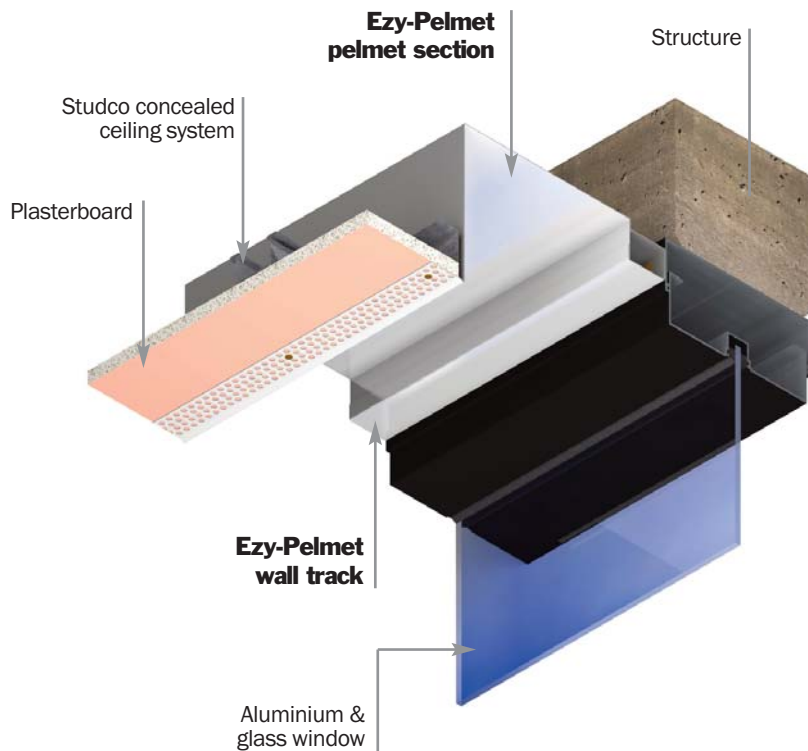
Ezy-Pelmet® is a two piece, pre-finished cold-rolled steel section which provides a fast, economical and prestigious solution for creating recessed window pelmets in plasterboard ceilings. It provides a simple and discrete transition between the interior ceiling and external windows, curtain wall facades or the building structure.



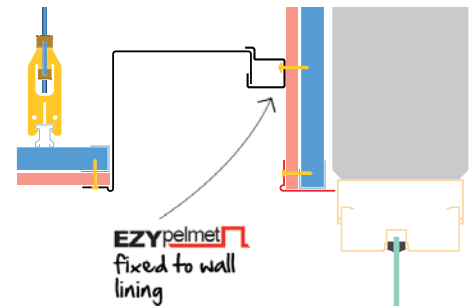
Luxurious views are made more enjoyable, thanks to the Ezy-Pelmet® 'clearview' design that makes the window lintel disappear above the ceiling line.



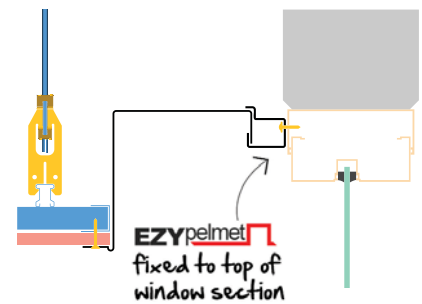
Ezy-Pelmet® is a two part system: the pelmet section and a wall track, which interlocks with the pelmets section.



Wall mount installation method



Clearview installation method



Designed, engineered and manufactured in Australia, Ezy-Pelmet® is the result of extensive consultation and testing with some of Australia's leading architects and the building industry, and the final design addresses all the needs of modern architecture and economical construction...

- Contemporary, clearview design
- Flush-finish edge for square-set interiors
- Completely concealed fixings
- Does not require fixing from the top
- Finished in white, no need to paint
- Install from below after ceiling
- Fastest method for creating window pelmets
- Suitable for blinds, curtain, lights & more

Ezy-Pelmet® is at home in apartments, offices, hospitals, schools, houses and just about any other application where a luxurious, clearview outlook is sought.

Get a brochure or data sheet on Ezy-Pelmet® today by calling 1800 STUDCO or email us at sales@ezyjamb.com.au.

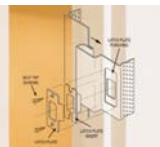
Part No.	EZY-PELMET	Length mm	Sub Pack
EP150-30	Ezy-Pelmet 150mm x 0.8mm - white	3000	1
EPT40-30	Wall track to suit Ezy-Pelmet - white	3000	1
EPEC-L	Left hand end cap for Ezy-Pelmet - white		1
EPEC-R	Right hand end cap for Ezy-Pelmet - white		1

Custom size Ezy-Pelmet available on request Ezy-Pelmet end caps also available.

More Ezy products...

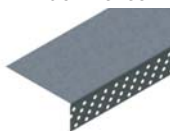
EZYjamb®

Flush-finish door jamb



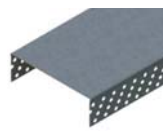
EZYreveal

The original easy window reveal



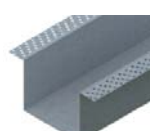
EZYcap

Fast & economical wall ends



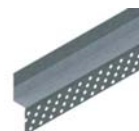
fastcap

Custom ceiling rebates



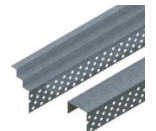
Custom Shadowline

Shadowlines to suit your needs



Other Sections

Design & create to your specifications





EZY reveal

Reveal Angle PVC Slip Over Trim...

The Studco PFT19A adjustable PVC slip over trim has been architecturally designed to create a flexible finish to all window and door openings where standard size reveals cannot meet.

Features & Benefits...

- Clean Line finish
- No Shadow effects
- Fully adjustable, one size fits all
- Flexible UV protected PVC
- Paint direct onto trim, no prep ■



Got any questions about engineering...?

Find out the facts and get peace of mind from Studco Technical Services.

StudcoBuildIT

SOLUTIONS

- Ease of construction
- Best value solution
- Simple designs
- Code compliant
- Certified engineers
- Simple solutions

SYSTEMS

- Internal & external walls
- Ceiling systems
- Structural stud systems
- Top hat systems
- Sound-rated acoustics
- Energy-efficient designs

SERVICES

- Technical advice
- Engineering documents
- Computations
- Engineer's opinions
- Detail drawings
- On-site support



STUDCO
BUILDING SYSTEMS

1800 STUDCO
WWW.STUDCOSYSTEMS.COM.AU



Available at a store near you



It sounds better with Resilmount...



Residents at two of Melbourne's newest, premium quality waterfront apartments will soon be enjoying the quiet life, thanks to innovative ceiling acoustic treatment solutions by Resilmount.

Converso Apartments, by Lend Lease, and Yarra Point, by Mirvac, adopted the use of BCA-compliant M319R Resilmount sound isolation bracket for the Slimceil ceiling system. In commenting on Resilmount's products, the Green Building Council of Australia (GBCA) referred to the solution as "superior acoustic treatment" and the developer noted that the luxury apartments "demanded the best acoustic products available". The M319R Slimceil resilient mounts provide static deflection for low clearance ceiling systems, in line with the demanding guidelines of the NCC 2012 (BCA). ■



Behind Converso's stylish interior lies a network of Resilmount and Studco products, specifically engineered to minimise sound and improve comfort levels.



Mirvac's Yarra Point Apartments: "achieving premium living spaces".



Converso Apartments by Lend Lease: "superior acoustic treatment".



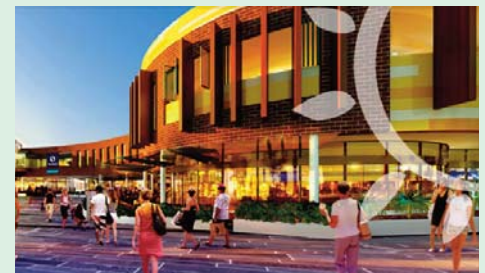
STUDCO GREENSMART



Studco concealed ceiling system engineered to provide a flexible and secure ceiling system.



Studco ezy finishing sections is the quick and easy alternative



The new Stockland Shellharbour shopping complex

NSW Shopping Centre Redevelopment

The \$330 million dollar redevelopment of Stocklands Shellharbour Shopping Centre is to achieve a 4 star Green star rating. This has been achieved by a delivering the largest application of solar energy to date for a shopping centre in Australia. Combined with tri-generation, solar energy will provide energy to 70 per cent of the new common area.

Built by Brookfield Multiplex the redevelopment is set to become a major regional shopping centre feeding the Illawarra region. A broad range of products from Studco Building Systems has

been installed to date and supplied by Faststud to their client K-Line Interiors Australia Pty Ltd. Faststud, as the New South Wales distributor for Studco, has worked in close co-operation with Studco to deliver critical engineering details for their client to allow construction to proceed on schedule.

The redevelopment is set to double the size of the existing shopping centre to approximately 75,000sqm totalling around 220 stores on completion. ■

Tough gloves



**STUDCO
tough**

This salty takes his protection seriously.

Just like the all new StudcoTough™ range of contractors clothing and workwear, specifically designed to meet the OHS needs of Australia's framers and plasterers.

On 1 October 2012, Studco launched StudcoTough™, the new benchmark in workwear and clothing for making your day on-site as comfortable and safe as possible. In line with Studco's reputation for innovative metal building products of premium quality and extreme durability, the StudcoTough™ range will tick all the boxes for comfort, protection, style and quality.

The first product to be launched is the StudcoTough™ Drywallers Glove, a fingerless safety glove designed for the safe handling of metal sections, easy gripping of lining boards, and superior comfort and control of power tools.

Stay tuned for more clothing releases from StudcoTough™ in the coming months.



CALL 1800 STUDCO TO ORDER NOW!

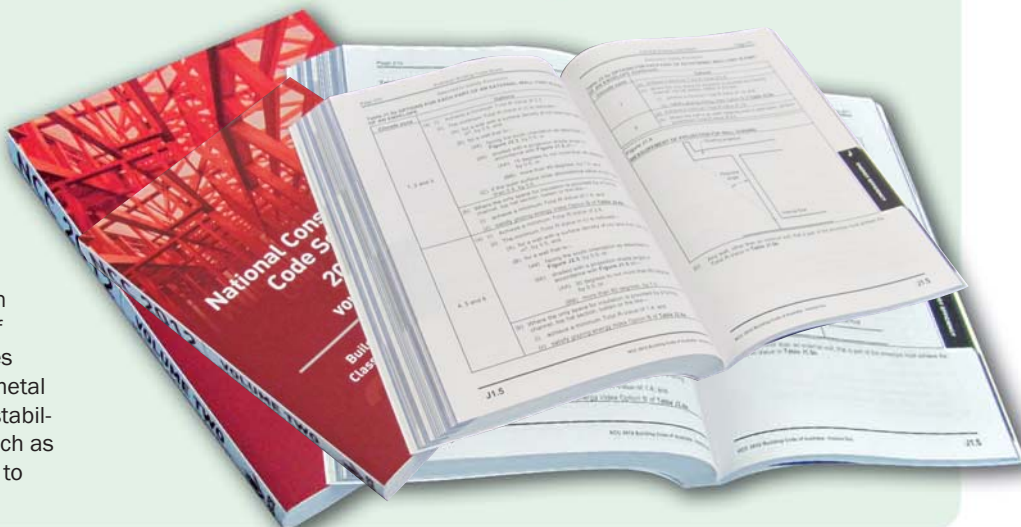


STUDCO GREENSMART

Section J compliance: so simple with Slimwall

Section J of the NCC 2012 (Building Code) covers 'energy efficiency' guidelines and requirements for the various facets of buildings and dwellings. One of the key elements of Section J covers the insulating and lining of concrete precast panels and block or brick walls, and the energy efficiency ratings of such walls have seen substantial increases in recent years as the need for abating the poor thermal properties of such substrates is realised. Studco's innovative Slimwall product is fast becoming the popular solution for energy efficient walls that need to meet Section J. Slimwall is suitable for use with all types of wall insulation making the maximum R-values achievable for the first time with a low-cost metal building system that still retains all the adjustability factors of common constructions clips, such as Studco's popular Betafix® clip. Call us today to learn more about this great innovation. ■

SLIMWALL
ENERGY EFFICIENT WALL SYSTEM



Flexible building systems for portable & pre-fab construction

Fast build times, lower costs and flexible styling are just some of the factors that are driving the Australian portable and pre-fabricated building industry.

Many key builders in the industry rely on Studco products for steel wall framing, roof structures, external facades, door jambs, window reveals and more. From the indigenous settlements in far north WA to the quiet resorts of southern Tasmania, Studco quality products are making construction easier, faster and less costly. Here's a few of the portable and pre-fab projects that have utilized Studco's range of building products...

- Portable & pre-fabricated homes
- Mining communities
- Container dwellings
- Energy-efficient workspaces
- Pop-up, high-rise buildings
- Remote location construction
- Tourist resort accommodation
- Bathroom pods and modules
- Low-cost export housing
- School buildings
- Mobile offices & site facilities ■



Mining town accommodation for more than 800 workers in Australia's Pilbara region.



Studco products are suitable for robust, cyclone-proof housing in remote and coastal regions.



Exceptional design and brilliant functionality combine to make this 2-storey, 5 bedroom modular home a sensational example of pre-fab versatility.

CASE STUDY 1: Need for an alternative to heavy structural steel



Heavy structural steel sections were proving problematic for one portable building manufacturer, due to the cumbersome handling requirements and the heavy weight in transport. Studco's creative engineers were able to replace all the structural steel lintels and jambs with the lightweight HEDA System which had the added benefit of removing the need for welding, which was becoming an OHS issue with excessive fume.

What can Studco do for you?

CASE STUDY 2: Studco innovation beats transport problems



Studco's design team and structural engineers innovated a fold-down, modular roof framing system for a portable house builder that needed to withstand extreme coastal weather conditions yet be styled to contemporary lines. The final design saved our client thousands in oversize transport costs and dramatically decreased the need for on-site labour in remote areas.

What can Studco do for you?



Factory-built, modular two-storey office complex consisting of 14 stacked modules.



Pre-fabricated steel house frames ready for transport to the Outback for government housing program.



High rise apartments (nearly 200 actually!) constructed from stacked prefab modules.

TECH TIPS

Back blocking

STUDCO B005 Butt Joint Batten has been developed with the plasterboard industry and provides a consistent recess shape for the finishing of joints when installed as per the plasterboard manufacturer's recommendation. Use STUDCO B005 for a faster, more cost-effective joint with greater strength.

Back-blocking is a joint reinforcing system where STUDCO B005 back blocking battens are screwed behind the sheets, at certain joints. Back-blocking is an important safety measure, to reinforce certain joints which often undergo additional stresses and are therefore more vulnerable to cracking. These stresses can be caused by many reasons, including subsequent building movement or by abnormal loadings such as heavy traffic beside the wall, or trades people moving about in the ceiling spaces. The consequential cracking of the finished jointing often requires a call-out for warranty repair, which is an avoidable and unwanted additional cost to the installer/builder.

Back blocking is recommended by all plasterboard manufacturers. The Australian and New Zealand Standard 2589.1 have a minimum

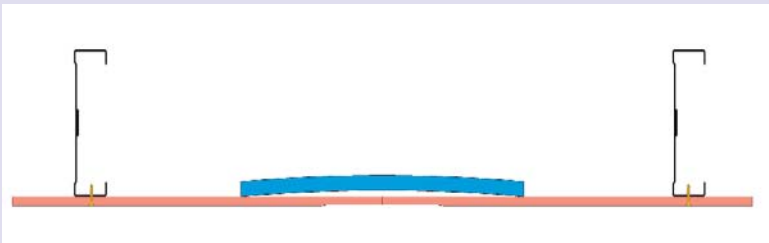
requirement that B005's should be used for all butt joints and in any area with 3 or more recessed joints. The decision as to back blocking of all joints not just the minimum requirement in the Standard is best made by the builder after consideration of factors such as:

- Moisture content of timber
- Maintenance history for similar installations
- Type of roof framing and timber used
- Severity of temperature and humidity conditions to which the installation will be subjected.

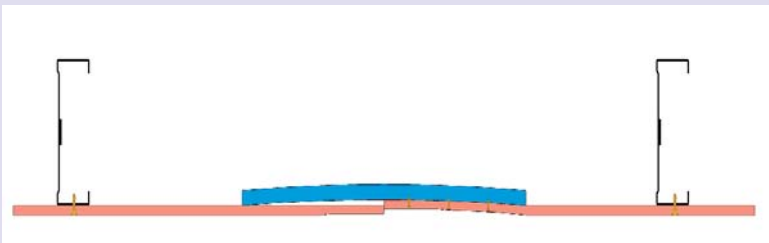
Butt joints which are to be back-blocked must be formed midway between framing members.

Where mid-span butt or end joints are not required but are used to minimise plasterboard wastage, these joints must also be back-blocked. All mid-span joints must be positioned within 50mm of the mid-span point between the framing members.

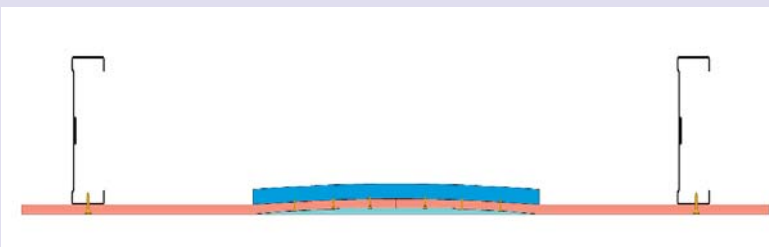
For architectural specifications or installation advice, please contact Studco Building Systems for fast, friendly service. ■



1. Plaster ready to be screwed with the back blocking batten.



2. One side screwed into the back blocking batten.



3. Both sides screwed into the back blocking batten and trowelled in for a flush finish.