

the ultimate in shade structures

reference guide 2007/08





mission statement

Greenline Shade and Shelter will provide a comprehensive range of quality products through personal professional customer contact while maintaining sound business principles and good profits.

Greenline Shade and Shelter promises a safe, enjoyable and challenging work environment based on thorough training systems and employee benefits and rewards.

Greenline Shade and Shelter will seize opportunity, change and innovation and purposely pursue the 'best way of marketing, operation, customer satisfaction and business development

Greenline Shade and Shelter will strive to reach an unequalled level of service and guarantee every product with full customer support and 'backup'.

Greenline Shade and Shelter commits to constantly pursue progress.

Our vision... *"Covering every outdoor experience"*

Unlimited *design & style*,
wide *range of colours!*



we create the *image* you want

shade structures...
so many benefits

- Commercial grade shade cloth gives you **95% UV Protection!**
- **Unique 10 year structure guarantee** for long term peace of mind.
- Heavy duty Stainless steel fittings plus galvanised & powder coated steelwork for aesthetic appeal and added protection!
- PVC **waterproof** option!
- Unlimited **design and style**. Every shade structure is customised to suit you and meet your requirements.
- 3-5 year **maintenance programs** for a long term **easy care solution**.
- **14 colours** to choose from.
- Increase your **property value!**
- **Engineered drawings**.
- 100% Australian made!



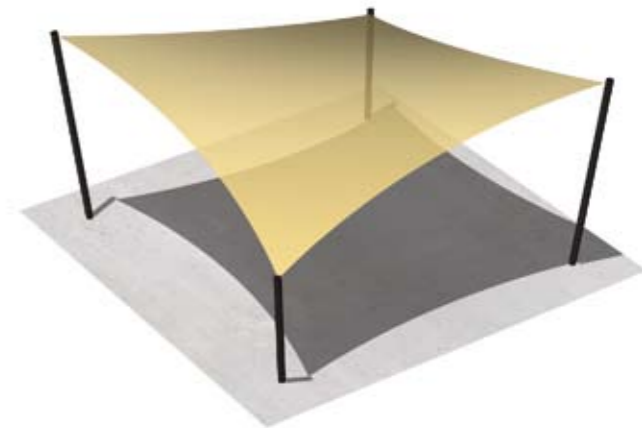


sail structure

sail

An **economical** and **eyecatching** design to enhance any area.

Mounted on steel posts with varying heights, the 'sail' is a great option & can be very **effective in combinations** of modular sizes.



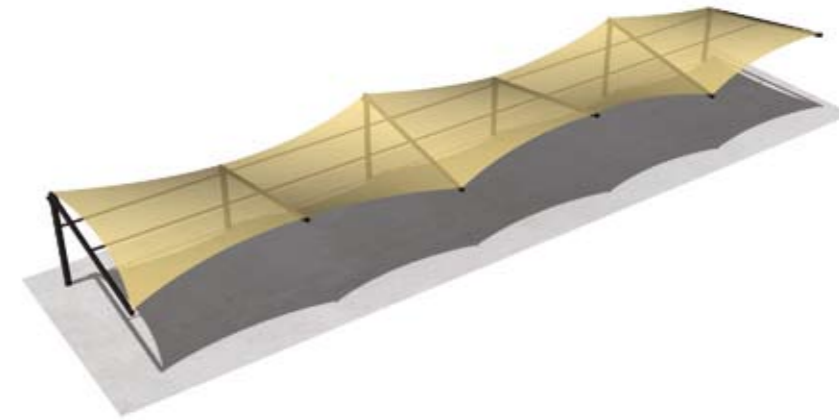


cantilever structure



An architectural design to **minimise posts & maximise shade!** A unique design that is both practical and **visually appealing.** Ideal for carparks, pools & public areas etc, or where the absence of columns is beneficial.

cantilever





hip structure



hip

A conventional & proven design for **maximum shade** with a **solid frame**. This is a reliable and effective design. Ideal for childcare centres, schools, playgrounds and sandpits.



conical structure



conical

With **striking looks**, the Conical structure features a **five post design** that is practical, long lasting & eye catching. Ideal for schools public areas and pools.





star structure



star

A **spectacular** combination of umbrella and sail designs around a centre post. A **trendy, new** and **innovative** design that promotes a **cool breezy** look. A great addition to any outdoor area.





umbrella structure



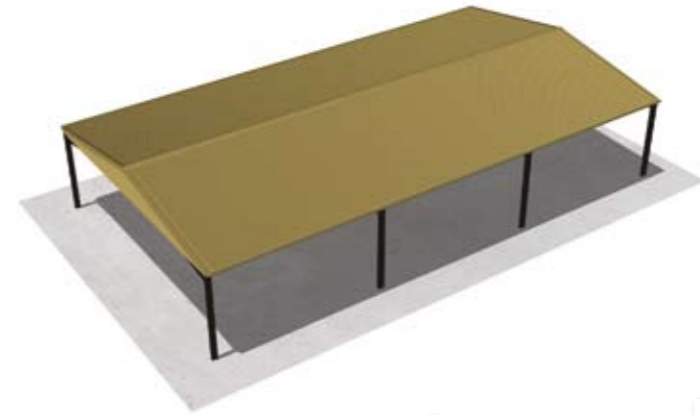
A **stunning** commercial grade umbrella in PVC or shade cloth. This **solid** and **beautiful** design is ideal for cafes, restaurants and councils.

umbrella





steel structure



A solid construction of **steel** and colourbond sheeting in your choice of **20 colours**. Great for recreation areas, schools and car parks.

steel





awning structure



awnings

A great **addition** to any building.

The awning has endless **designs** and

applications. Ranging from steel

to shadecloth, the awning is ideal

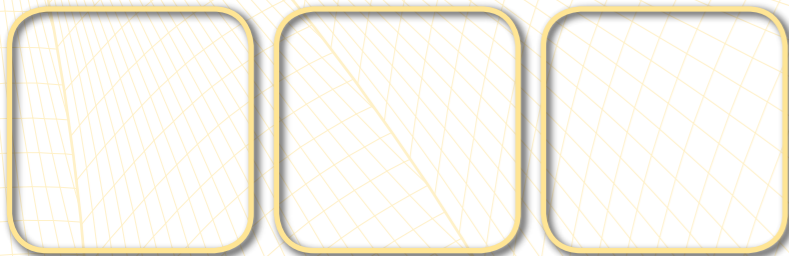
for loading docks, entrance ways or

architectural features.



endless possibilities...

schools playgrounds **residential areas** swimming pools **awnings** hotels **resorts** carwash's **entertaining areas**
preschools **commercial** retirement facilities **hospitals** tafe's **shopping centres** and... **councils.**



compliment your structure

- **Sofffall areas** - Ideal for playgrounds and playground equipment.
- **Seating & Benches** - Public areas, schools and in all commercial applications.
- **Play Equipment** - For schools, childcare centres and councils.
- **Rainwater Tanks** - A great addition to steel structures.
- **Lighting** - Makes sail structures a dazzling statement, especially in car parks.
- **Concrete & Asphalt surfaces** - A great finish to any structure in large areas.



more than your average shade solution

your ultimate shade...
colour selection



marigold



vanilla



sand



coolabah green



rainforest green



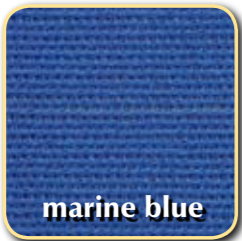
terracotta



red



maroon



marine blue



denim



navy



grey



black

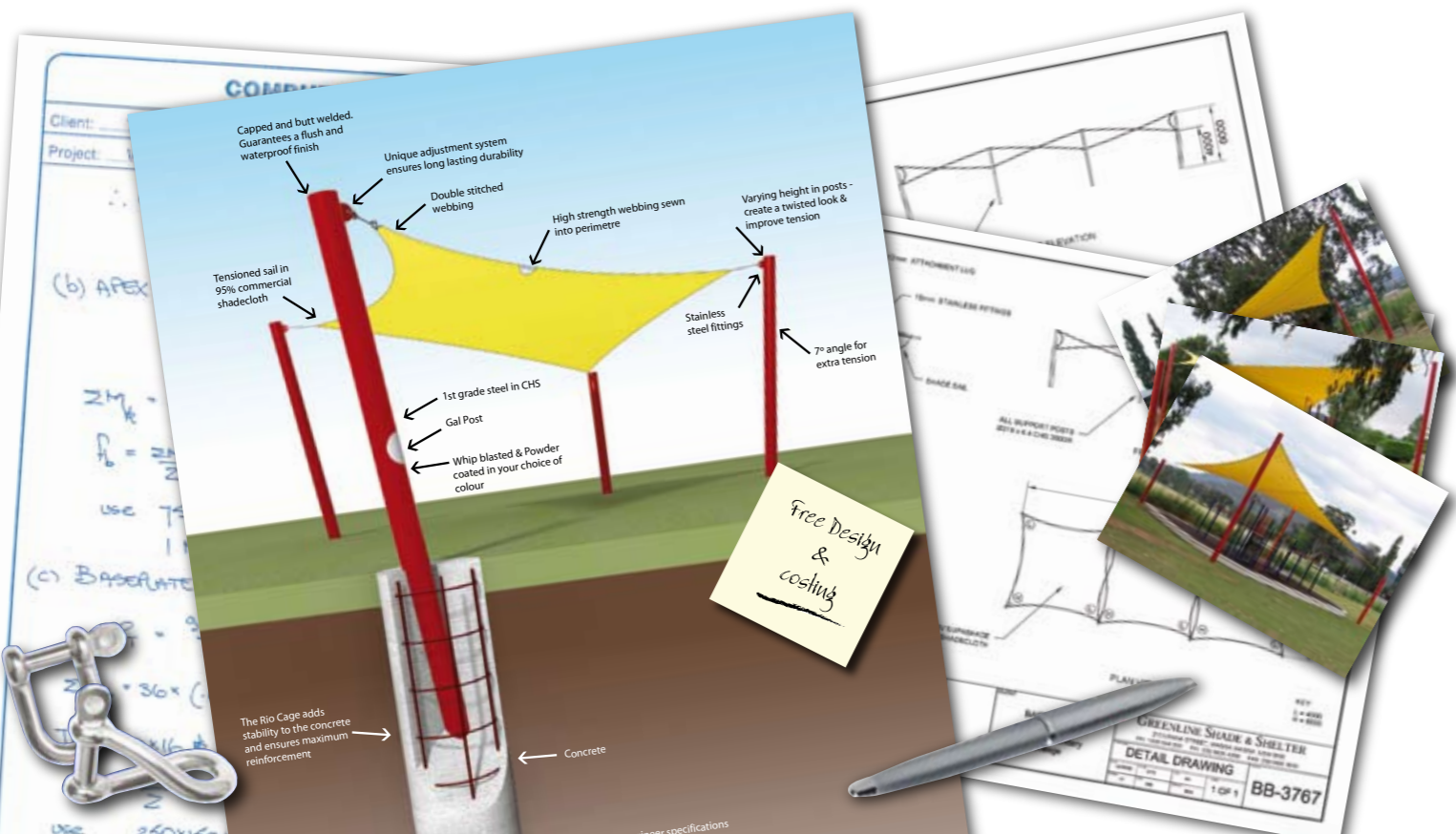
- Commercial grade shadecloth.
- Waterproof PVC membrane.



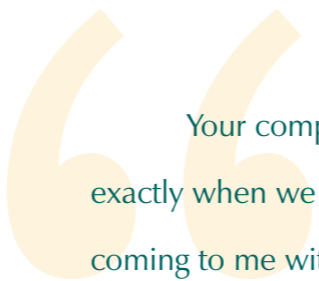
there is no limit to the
design and style
of shade sails

These colours are a guide only. Fabric samples available on request.

If you want quality...
you'll be impressed with the detail in our structures



what others are saying...



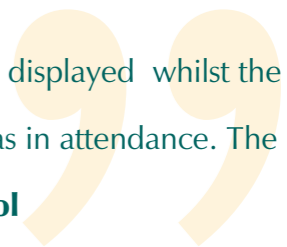
Your company was a pleasure to deal with. We received our structure exactly when we wanted it and it looks so modern and appealing. Everyone is coming to me with such positive comments. Thank you all so much!

St Elizabeth Nursing Home

The structure provides much needed shade for our school and meets our sun safe policy - its a great structure that everyone is enjoying.

Mt Austin Primary School

I must commend both you and your staff in the care and professional manner displayed whilst the project was being carried out, as at all times you had to work whilst school was in attendance. The finished product is a gem to the school **Castle Hill Adventist Primary School**





“covering every outdoor experience”



Shade & Shelter

PO Box 5364 Wagga Wagga, NSW 2650

Ph: (02) 6938 1000 Fax: (02) 6938 1001 FREE CALL: 1800 044 200