

**Diamond Series Stainless Steel** uses 100% Australian manufactured **HEELGUARD** wedge wire grating. This unique wire creates a grid form with a relief space larger than the head width. This technology results in a non clogging grate, with a 5.0mm aperture, **HEELGUARD** is safe slip resistant architectural finish ideal for public spaces as women's high heel shoes cannot penetrate, reducing trip hazards which may result in costly law suits.

**HEELGUARD SEAMLESS TECHNOLOGY** comes in an easy to order component system to suit a wide variety of applications and visual appeal, making it an easy combination for specifying and design. The choice of three widths and depths cover all new construction and renovation applications and off the shelf patented clipping mechanism means an over night or same day delivery service is possible, never previously being available.

**DIAMOND SERIES** is a component system available in standard widths of 50, 100 and 130mm wide grating options. These widths and depths offer a variety of intake capacity and with the flexibility of singular or multiple outlet positions can cater for all discharge requirements.



02

**01 Diamond series components:** Vertical outlet, 90° corner, Continuous Drain, Balcony Drain and Pool Drain.

**02 Continuous Drain** compliments the landscaping as well as provides the hydraulic discharge for large areas

**03 Balcony Drain** compliments the balustrade as well as being shallow enough to work in with tile bedding

**04 Pool Drain** is a grate alternative in areas of high rainfall and critical runoff



03



04

**05 Slimline Balcony Drains** are ideal in complimenting longitudinal architectural lines.

**06 Continuous Drain** compliments the highest quality bathroom finished without compromising slab depth restrictions.

**07 Diamon Series** is the ultimate in providing seamless technology in any configuration.



05

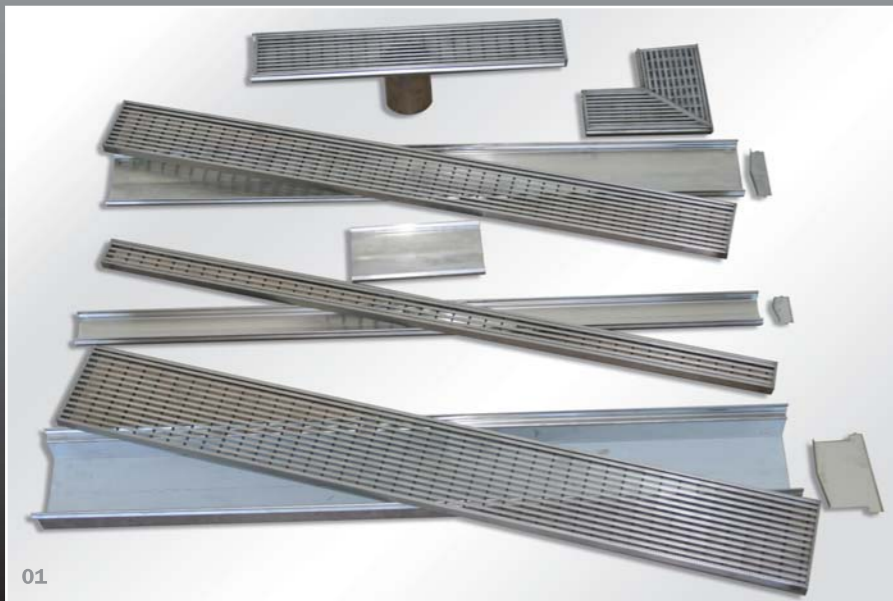


06



ATS 5200.040  
Cert 21037  
SAI GLOBAL

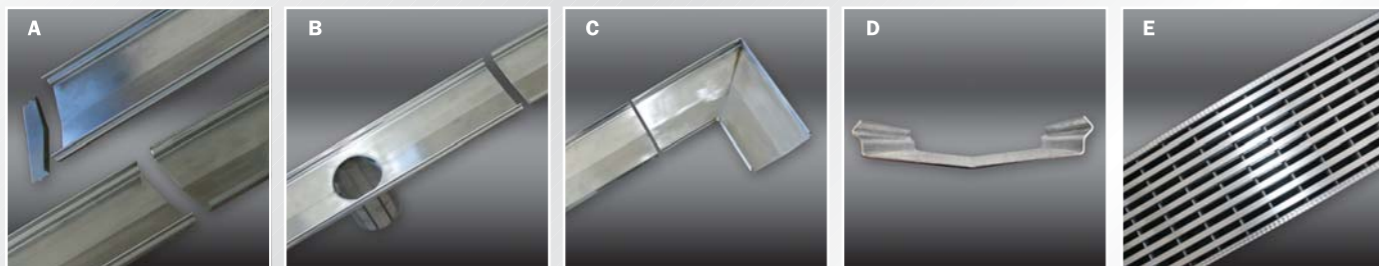
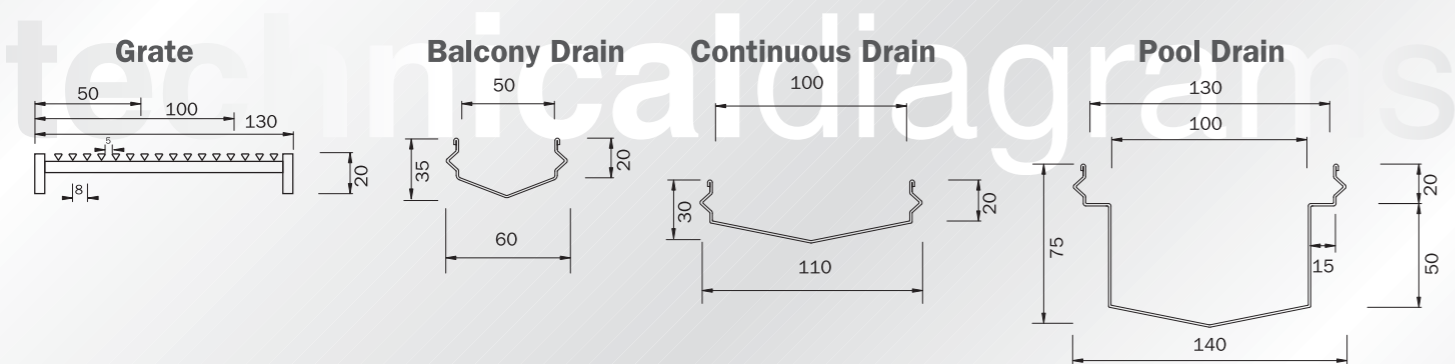
**HEELGUARD SEAMLESS TECHNOLOGY**  
AS/NZS 4586-2004 slip resistance  
Compliant to level R10 Exceeding pedestrian rating for slip resistance



01



07



A End Plate, Straight Channel & Joiner

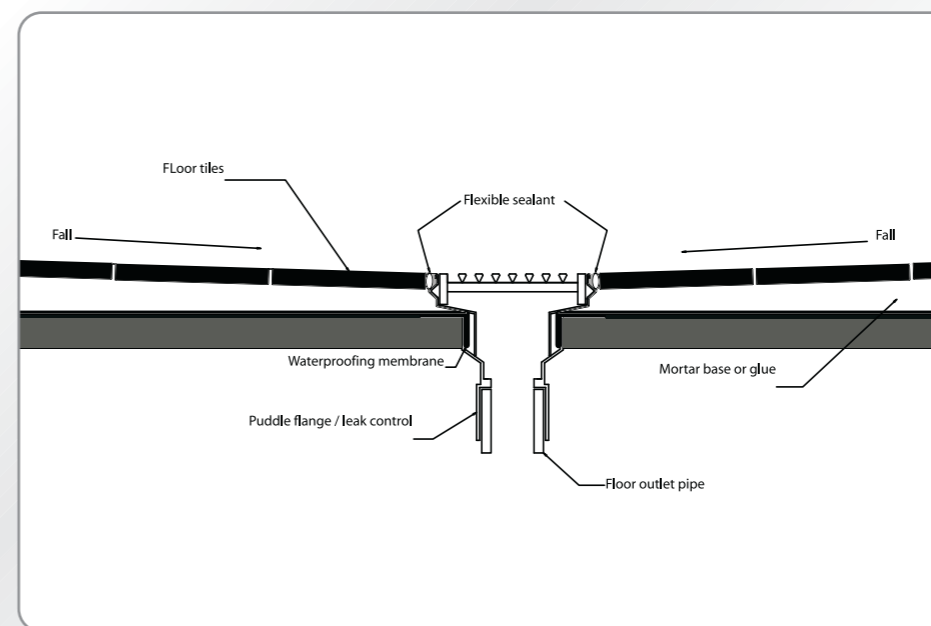
B Vertical Outlet

C 90° Corner Unit

D Diamond Series Tray Profile

E Heelguard Wedge Wire Grate

### Typical installation for Diamond Series Stainless Steel



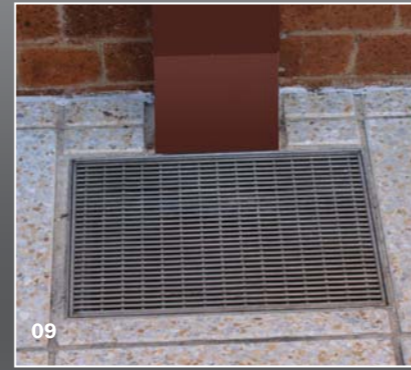
### Recommended Installation Practices

- Inspect the product for any signs of damage prior to installation
- Waterproof and install to your local authority requirements
- Before installation lay out all components along channel run to ensure all pieces are on site.
- It is recommended the grate be in situ during installation, if the grate is removed use a suitable spreader to prevent the tray from flexing inwards.
- Set the grate 1-3mm below the finished floor surface for best results
- The tray should be cast into a suitable slurry bed or flexible sealant, ensure there are no air pockets under the tray
- Tiling wedges can be used on the under side of the V bottom of the tray to stabilise during installation.
- It is advised that the grate and trough be cleaned periodically, we recommend the 'Cyndan' range of products.
- Use a wire hook to remove the grate from the trough for cleaning





08



09



10



11

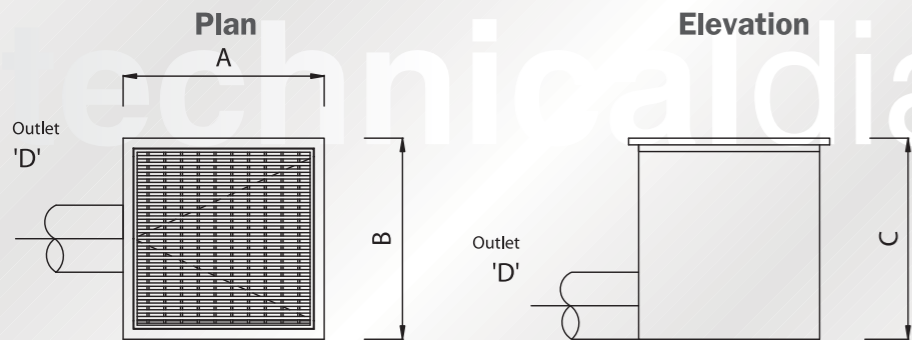
### Diamond Series stainless steel sumps

**08** Ideal for public areas and pedestrian walkways  
Available in class A, B and C load ratings.  
Manufactured from either 304 or 316 grade stainless steel  
Custom sizes available  
Sediment baskets can be fitted  
Durable and timeless life span.

**09 Diamond Series Sumps** can be dual purpose, to discharge surface water as well as overflow flood prevention on down pipes.

**10 Stainless Steel Sumps** can be custom made to enhance architectural paving effects.

**11 Downpipes** can discharge into the grated surface which prevents any debris and rubbish from entering the storm water system.



Diamond series sumps			
Length	Width	Depth	Outlet
A	B	C	D
300	300	300	As required
450	450	400	As required
600	600	400	As required

**DIAMOND SERIES.  
REVOLUTIONARY  
PATENTED  
STAINLESS STEEL  
DRAIN SYSTEM.  
SIMPLY 'SNAPS'  
TOGETHER.**

For more information contact Aquadux Toll-Free on:

**1300 132 352**

or visit us at [www.platinumstainless.com](http://www.platinumstainless.com)

**AquaduxCommercial**  
better ways with water

Queensland 0431 577 598  
North Queensland / Northern Territory 0417 763 015  
New South Wales / ACT 0419 419 411  
Victoria / South Australia / Tasmania 0417 141 265  
Western Australia 0412 341 104

**AquaduxCommercial**  
better ways with water

an *OAliaxis* company