

**Introducing**

# **Exsulite**<sup>TM</sup>

Thermal Facade System by



***The new standard in  
Thermal Facade Cladding***

## The new standard in Thermal Facade Cladding

Introducing the quality and technology you expect in a system that includes wrap, thermal cladding, acrylic texture coating and Dulux® colour top coat from the industry's largest coating supplier.

You can expect the following features from Exsulite™ -

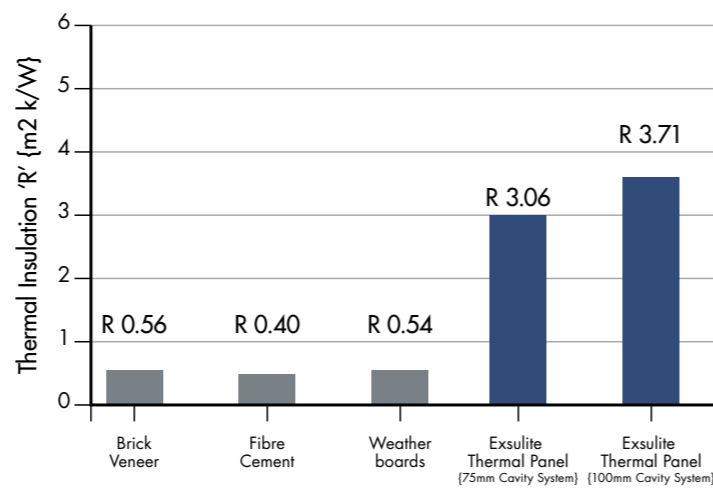
- Cavity System
- Weatherproof barrier protection
- Moisture management
- High R-Value
- Compliance to BCA
- Low maintenance

## Exsulite™ Thermal Facade System "R" Values

To determine how good something is, you must compare it to its peers on the same terms.

Common building products such as fibre cement sheet, brick veneer and weatherboards are widely used throughout Australia. Does this mean they're the best?

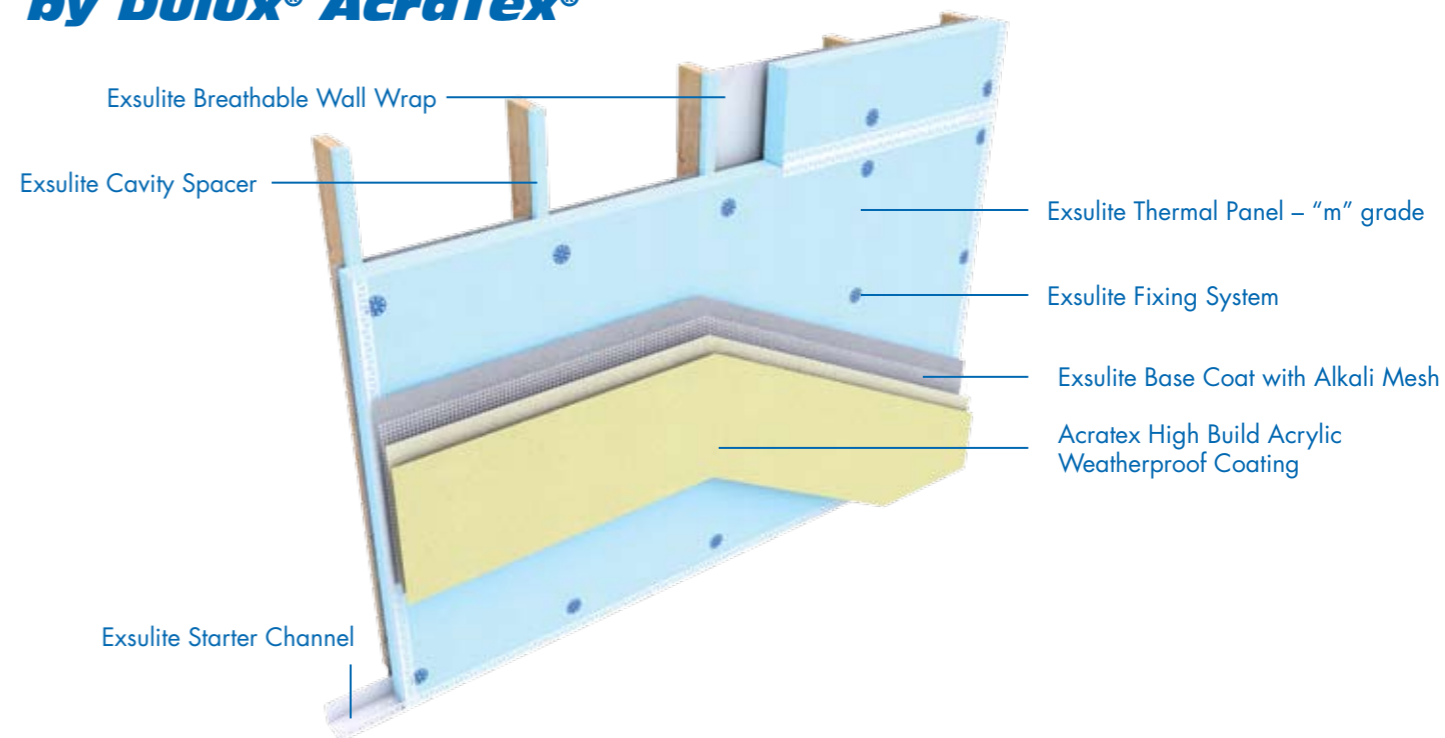
In a changing world where energy costs are rising and property valuations escalating, the real winners are going to be the smart and savvy, who select materials that will save them long term and add value at a great rate. The graph shown demonstrates the current R-Values for each building material.



\*R Rating figures obtained from SmartRate. Full breakdowns of figures are available via our website [www.dulux.com.au](http://www.dulux.com.au)



## Fully integrated thermal facade system by Dulux® AcraTex®



The Exsulite™ Thermal Facade System integrates four key components –

1. Continuous weatherproof air barrier & moisture management system,
2. Efficient high "R" rated insulation value
3. A weatherproof building envelope
4. Latest fashionable colours & finishes providing a sustainable walling system unlike any other.

The Exsulite™ Thermal Facade System by Dulux® AcraTex® is a "cavity" system for new residential and light commercial construction. It can also be used as a facade remedial system for rectification and rejuvenation projects when used as a direct fix system.

## Compliance to the Building Code of Australia

The Exsulite™ Thermal Facade System Complies with the Building Code of Australia 2010 (Volume 2) as an external wall cladding system incorporating AS1366.3 1992.

It is finished with an acrylic weatherproof Dulux® AcraTex® coating system (as required to achieve weatherproofing) on Class 1 and 10 buildings.

Installed by a trained & accredited Exsulite™ Installer

Features	Benefits
Weatherproof Air & Barrier Protection	Weatherproof air barrier protects against moisture ingress
Moisture Management	Prevents wall damage caused by condensation within the wall assembly.
High R-Value	Superior insulation with R-Values providing energy cost saving
Compliance	Complies to BCA 2010 (Volume 2) as an external wall cladding
Low Maintenance	AcraTex® coating systems provide a dirt resistant surface, maintaining that new look for a longer period
Total system warranty	When installed by an Exsulite Accredited Installer



Order from Dulux® AcraTex®



Delivery of Exsulite™



Installing Exsulite™



Delivery of AcraTex® texture coating



Application of AcraTex® texture coating



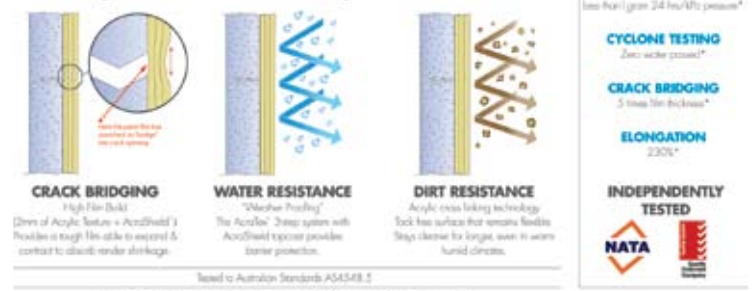
Hand-over to the client

## Total system by Dulux® AcraTex® - the industry's largest coating supplier

The Exsulite™ Thermal Facade system has been engineered using genuine components and installation procedures to deliver a total integrated system that eliminates substitution of alternative and non compliance options.

- Designed to meet the BCA criteria
- Cavity design incorporating a moisture management system
- Specified system to ensure all jobs only use Exsulite™ Thermal Facade system components
- Installation guide lines & site procedures to ensure every job is installed correctly
- Accredited Exsulite™ Installer management & QC procedures

### How High Build AcraTex® Acrylic Texture Protects



## Dulux® AcraTex® Project Support

The Exsulite™ Thermal Facade System comes with installation procedures and guidelines to assure architects, builders and building owners peace of mind.

Design guidelines, installation methods and project specific specifications are available on request through your Dulux® AcraTex® representative or call 1 300 662 841 for further information.



For further information go to: [www.acratex.com.au](http://www.acratex.com.au)  
Dulux Australia Dulux Customer Service: 1 300 662 841  
1 Jeanes Street, Beverley SA 5009 Australia

Dulux® AcraTex® is a division of DuluxGroup (Australia)  
ABN 67 000 049 427. Dulux and AcraTex are registered trademarks and Exsulite™ is a trademark.