



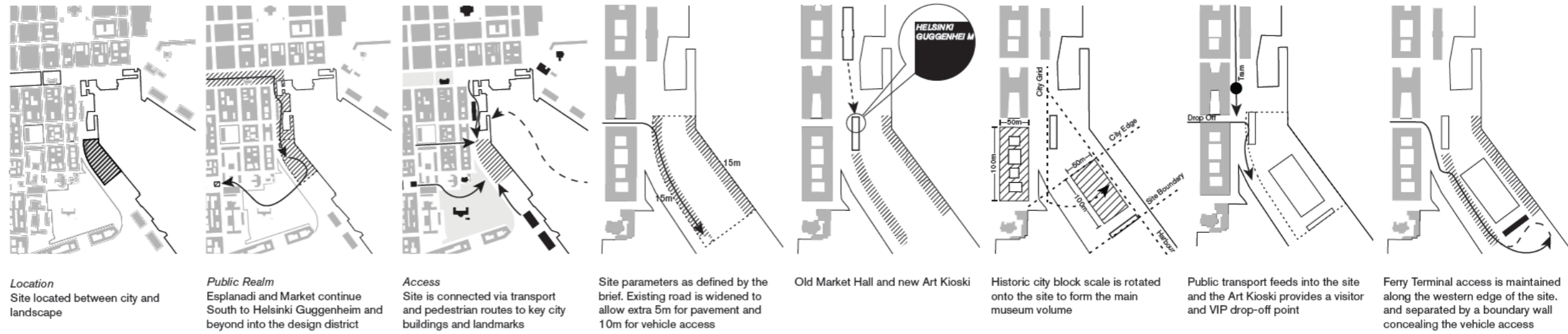
quiet animal

Our proposal takes the form of a Helsinki city block rotated to the harbour-front.

Helsinki city blocks in the 1800s were named after wild animals. The proposed new block will have the tactile familiarity of a pet's fur.

Six timber-clad galleries are stacked over two levels and flanked by a seventh for administration and retail. Public spaces are formed between these and an intelligent textured glass skin wrapping the entirety to precisely diffuse light, translucent below, and transparent above.

The ground floor galleries can join to form one super-space, enabling a wide range of curatorial approaches. Two distinct staircases - one convivially wide, the other helical, enable visitors to wayfind without retracing paths. The wider staircase is also used for film screenings. "Art Kiosk" annex for young Nordic art twins the northern market hall and the service pavilion encloses a sculpture garden to the south.



Location
Site located between city and landscape

Public Realm
Esplanadi and Market continue South to Helsinki Guggenheim and beyond into the design district

Access
Site is connected via transport and pedestrian routes to key city buildings and landmarks

Site parameters as defined by the brief. Existing road is widened to allow extra 5m for pavement and 10m for vehicle access

Old Market Hall and new Art Kiosk

Historic city block scale is rotated onto the site to form the main museum volume

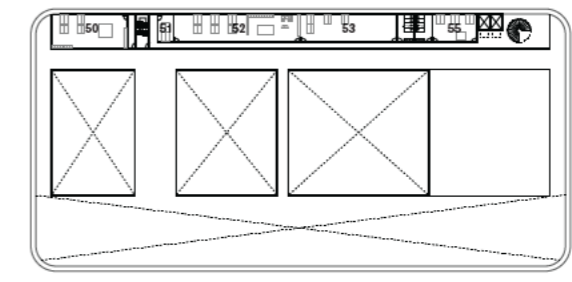
Public transport feeds into the site and the Art Kiosk provides a visitor and VIP drop-off point

Ferry Terminal access is maintained along the western edge of the site, and separated by a boundary wall concealing the vehicle access

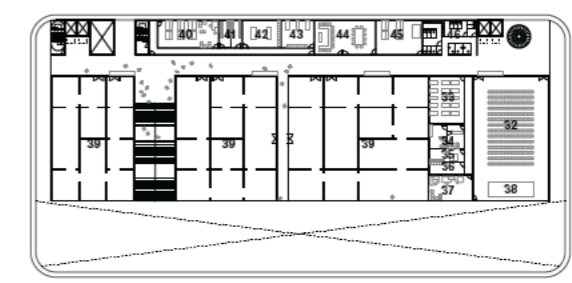


Set View - Angle 06

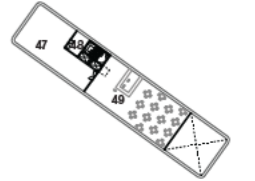
- Site
- A Visitor Drop-Off Point
- B Art Kiosk
- C North Plaza
- D Entrance
- E Harbour Promenade
- F Cafe
- G Sculpture Garden
- H Vehicular Entrance
- I Deliveries
- Basement
- 1 Vehicular Entrance
- 2 Plant
- 3 Registrar / Conservation / Exhibition Design and Tech. Offices
- 4 Shared Art Preparation / Conservation Studio and Equipment Storage
- 5 Art Storage
- 6 Uncrating / Staging
- 7 Crate Storage
- 8 Shipping and Receiving
- 9 General Loading Dock
- 10 Art Loading Dock
- Ground Floor
- 11 Entrance
- 12 Visitor Screening / Bag Check
- 13 Ticketing and Information Desk
- 14 Storage
- 15 Coat Check and Lockers
- 16 Project Space
- 17 Exhibition Gallery
- 18 Cafe / Bar
- 19 Kitchen
- 20 Catering Prep / Staging Area
- 21 Receiving
- 22 Offices
- 23 Trash Room
- 24 Storage
- 25 Stock Room and Offices
- 26 Museum and Design Store
- 27 Landscape and Grounds Maintenance Equipment
- 28 Custodial Office
- 29 Security Office / Control Room
- 30 Restrooms
- 31 Retail
- First Floor
- 32 Performance / Conference Hall
- 33 Multifunction Class Room
- 34 Dressing Rooms
- 35 Technician Room
- 36 Control Room
- 37 Green Room
- 38 Moveable Stage Platform
- 39 Exhibition Gallery
- 40 Staff Lunch Room and Lounge
- 41 Locker Rooms
- 42 Supply / Equipment and Storage
- 43 IT Server / Workroom and Staff Offices
- 44 Conference Rooms
- 45 Shared Work Room
- 46 Restrooms
- 47 Kitchen
- 48 Storage
- 49 Formal Restaurant
- Second Floor
- 50 Curatorial / Exhibition Design and Publications Offices
- 51 Archivists Offices
- 52 Administrative Offices
- 53 Marketing and Development Offices
- 54 Restrooms
- 55 Education Offices



Second Floor Plan

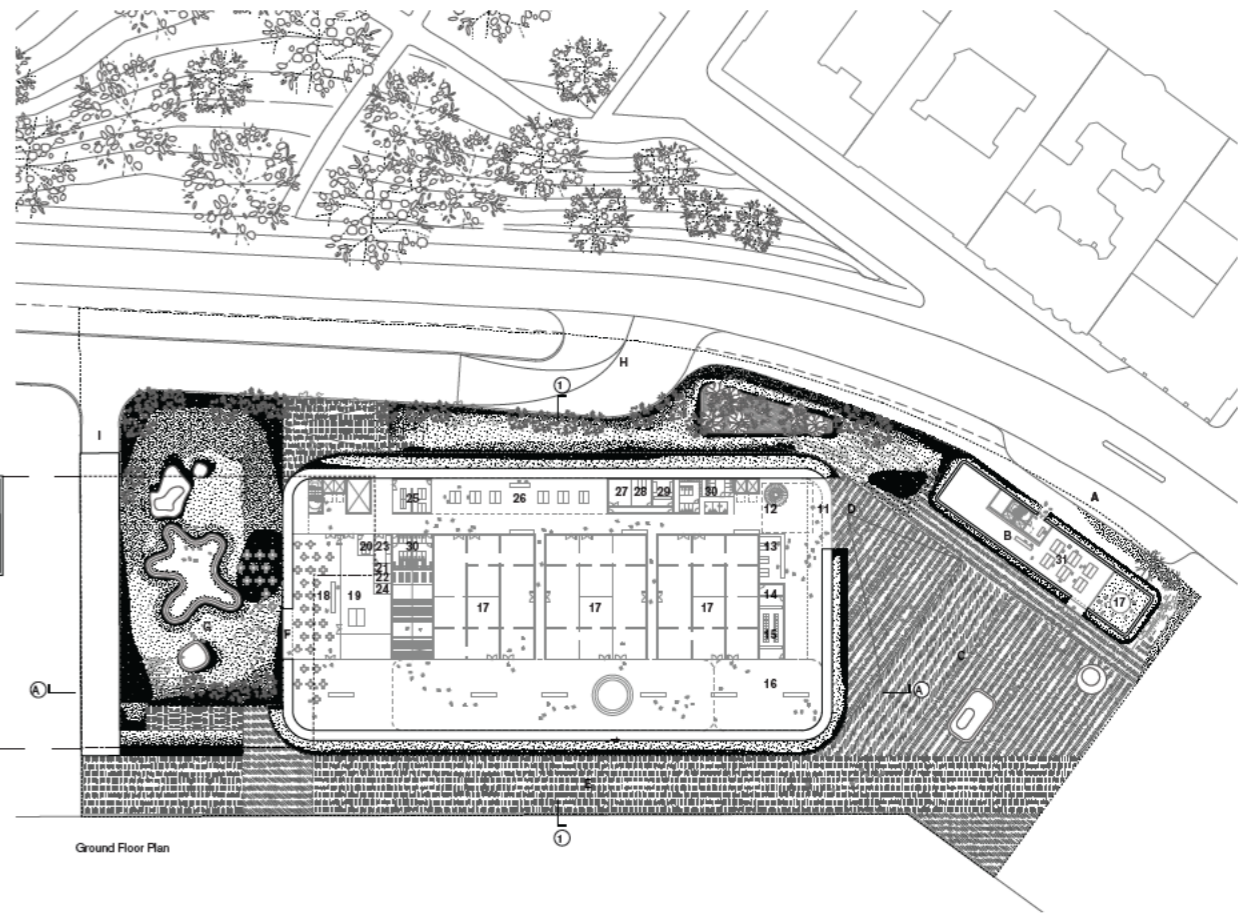


First Floor Plan

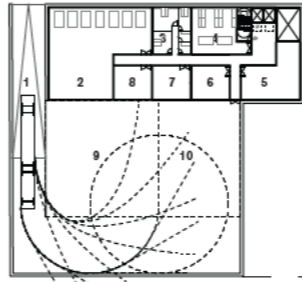
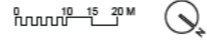


Set View - Angle 04

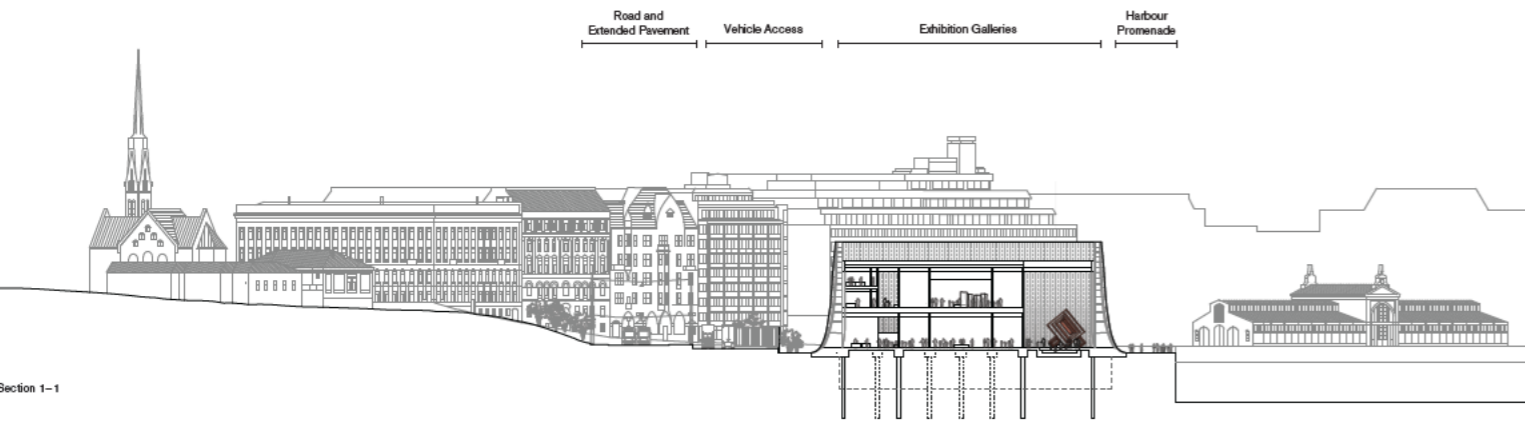
- Basement
- 1 Vehicular Entrance
- 2 Plant
- 3 Registrar / Conservation / Exhibition Design and Tech. Offices
- 4 Shared Art Preparation / Conservation Studio and Equipment Storage
- 5 Art Storage
- 6 Uncrating / Staging
- 7 Crate Storage
- 8 Shipping and Receiving
- 9 General Loading Dock
- 10 Art Loading Dock
- Ground Floor
- 11 Entrance
- 12 Visitor Screening / Bag Check
- 13 Ticketing and Information Desk
- 14 Storage
- 15 Coat Check and Lockers
- 16 Project Space
- 17 Exhibition Gallery
- 18 Cafe / Bar
- 19 Kitchen
- 20 Catering Prep / Staging Area
- 21 Receiving
- 22 Offices
- 23 Trash Room
- 24 Storage
- 25 Stock Room and Offices
- 26 Museum and Design Store
- 27 Landscape and Grounds Maintenance Equipment
- 28 Custodial Office
- 29 Security Office / Control Room
- 30 Restrooms
- 31 Retail
- First Floor
- 32 Performance / Conference Hall
- 33 Multifunction Class Room
- 34 Dressing Rooms
- 35 Technician Room
- 36 Control Room
- 37 Green Room
- 38 Moveable Stage Platform
- 39 Exhibition Gallery
- 40 Staff Lunch Room and Lounge
- 41 Locker Rooms
- 42 Supply / Equipment and Storage
- 43 IT Server / Workroom and Staff Offices
- 44 Conference Rooms
- 45 Shared Work Room
- 46 Restrooms
- 47 Kitchen
- 48 Storage
- 49 Formal Restaurant
- Second Floor
- 50 Curatorial / Exhibition Design and Publications Offices
- 51 Archivists Offices
- 52 Administrative Offices
- 53 Marketing and Development Offices
- 54 Restrooms
- 55 Education Offices



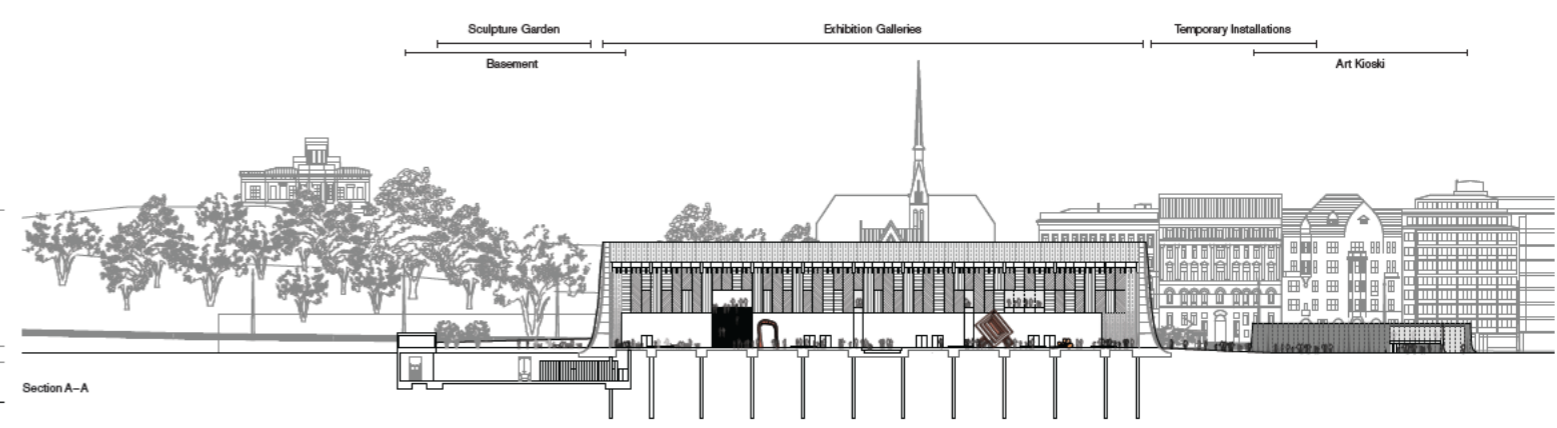
Ground Floor Plan



Basement Plan

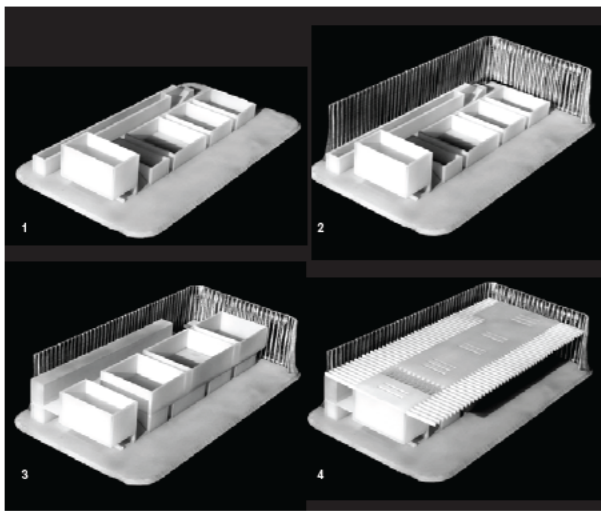
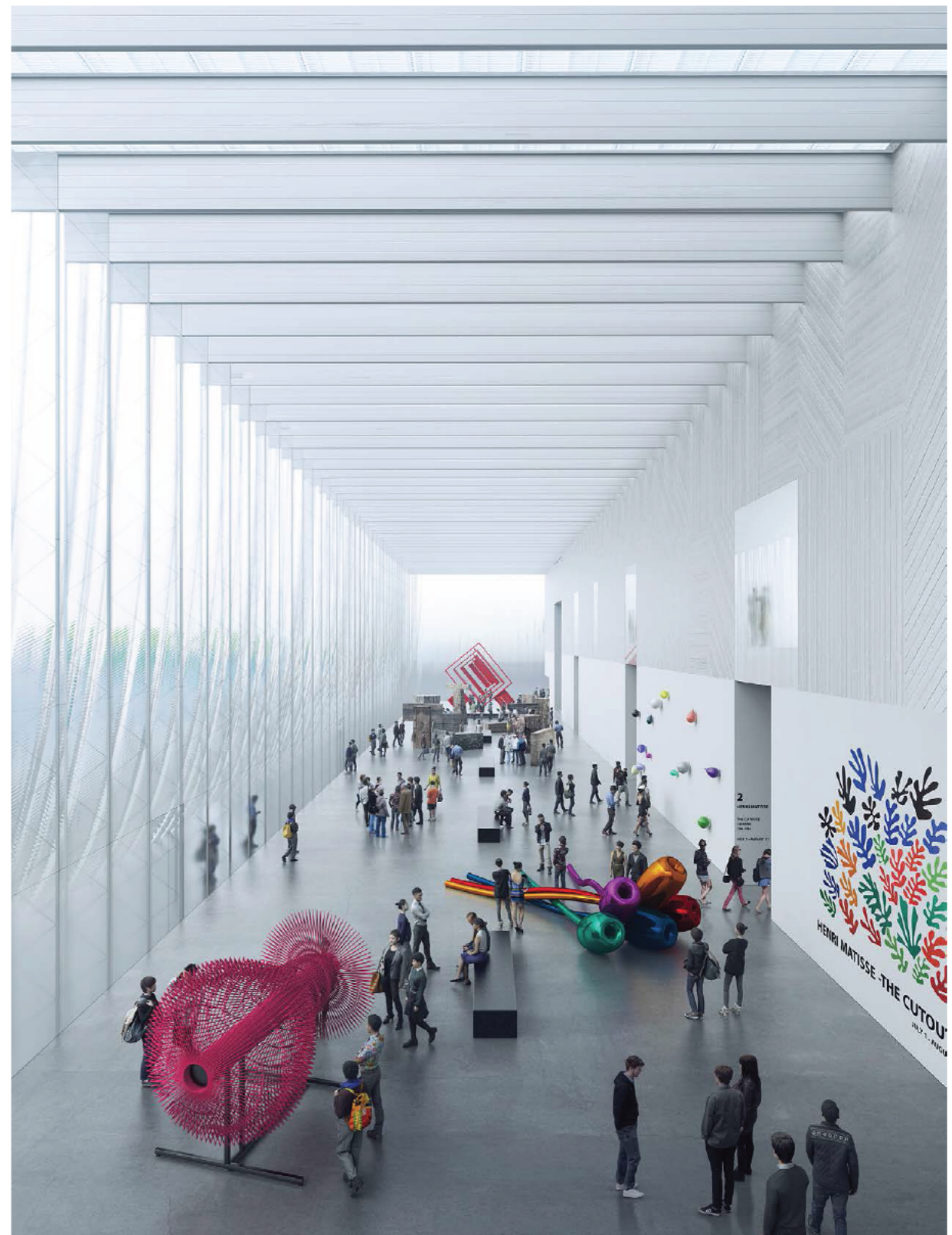


Section 1-1



Section A-A

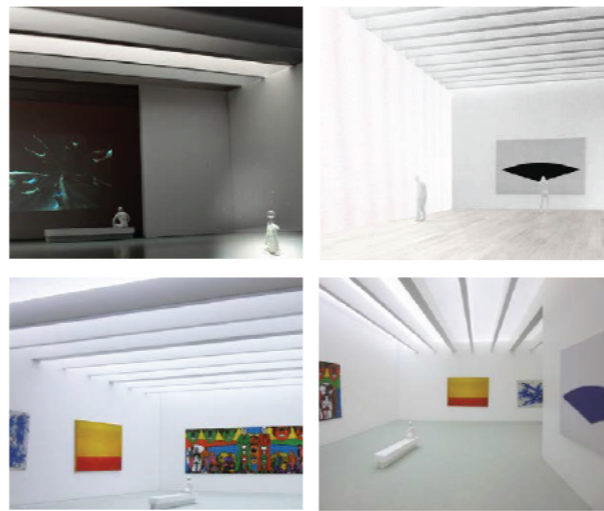
3



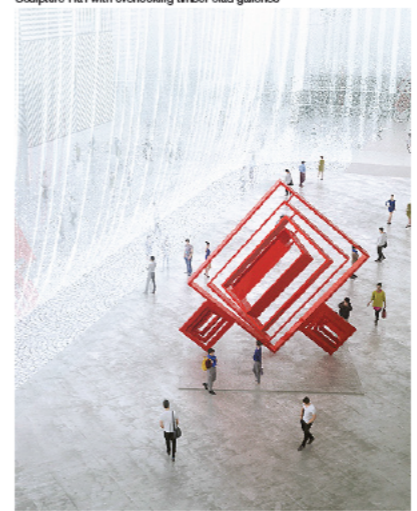
1 - Ground floor and plinth 2 - Facade 3 - First floor gallery spaces and admin block 4 - Roof structure



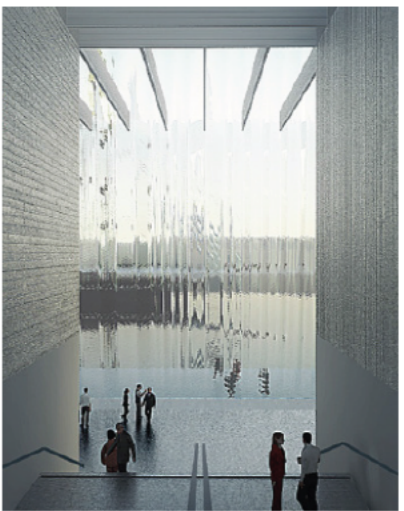
Breakout space on first floor at North West of building
Entrance at ground floor



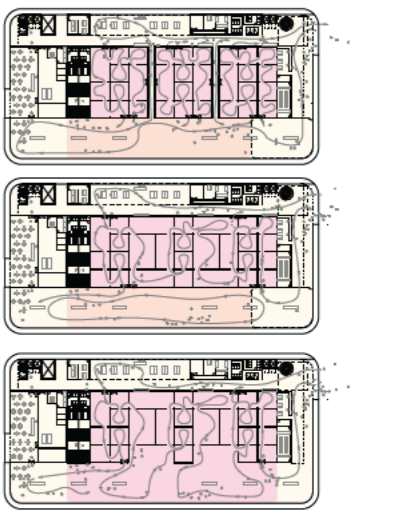
Adaptable natural light conditions for exhibition gallery spaces



Sculpture Ha I facing harbour and naturally lit through facade

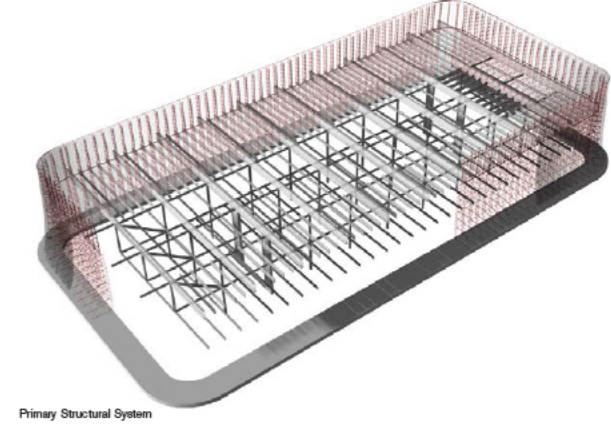
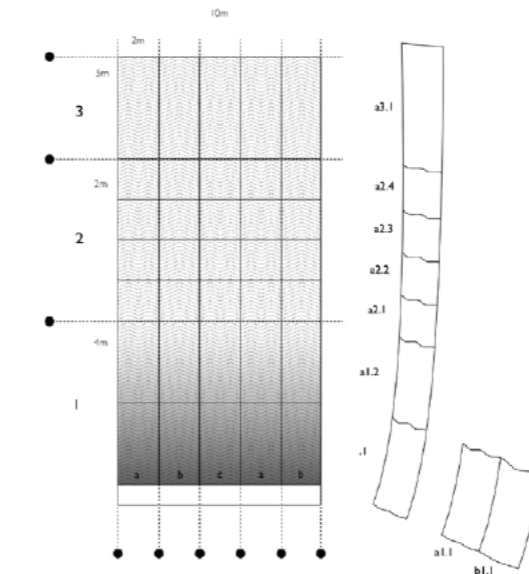


Staircase running between timber clad upper galleries



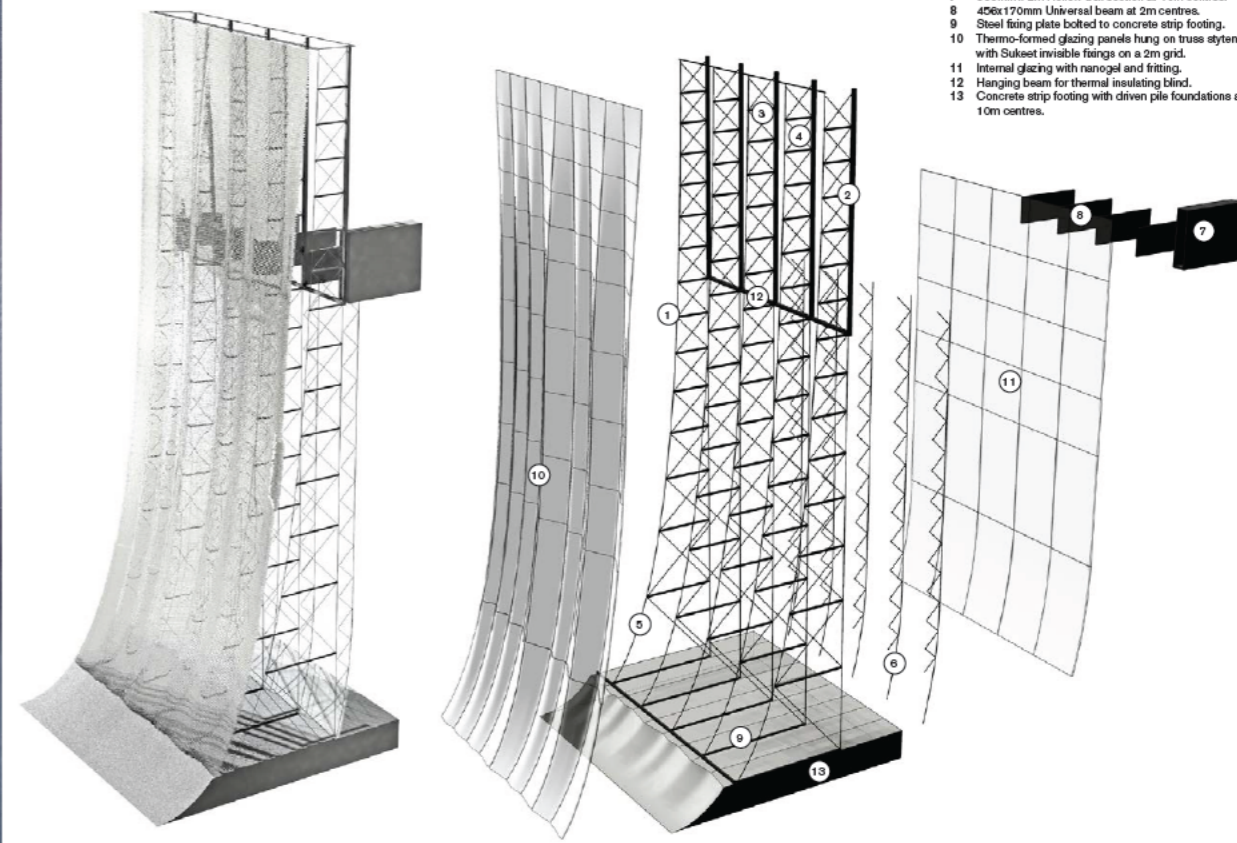
Flexibility of ground floor galleries to open up to form one super-space

Sculpture Ha I with overlooking timber clad galleries



Primary Structural System

Glazing Panel Breakdown



Detail Wall Section

Wall Assembly

- 1 Vertical cable truss at 10m centres.
- 2 100x100mm SHS, stiffening structure above roof deck.
- 3 50x50mm SHS, horizontal struts.
- 4 Secondary cross-bracing, 10mm diameter cables.
- 5 15mm Diameter cable following profile of exterior glazing panels.
- 6 15mm Diameter cable following profile of interior glazing panels.
- 7 500mm x 2m Hollow box section at 10m centres.
- 8 45x170mm Universal beam at 2m centres.
- 9 Steel fitting plate bolted to concrete strip footing.
- 10 Thermo-formed glazing panels hung on truss system with Sukeet invisible fixings on a 2m grid.
- 11 Internal glazing with nanogel and fitting.
- 12 Hanging beam for thermal insulating blind.
- 13 Concrete strip footing with driven pile foundations at 10m centres.

SOCIAL

- Universal Access
- Local Civic Amenities
- Comfort for Art & Visitors

ENVIRONMENTAL

- Utilising Current Infrastructure
- Double Skin Modulates Internal Environment
- Careful Use of Durable Materials

FINANCIAL

- €130M Project Budget Funding Models
- €100m Construction Budget
- Project Benchmarking Cost/m² For Visitor Attractions

22°C
51% RH

State Helisink

100%

50% 50%

Construction Sum

€100m

€112m

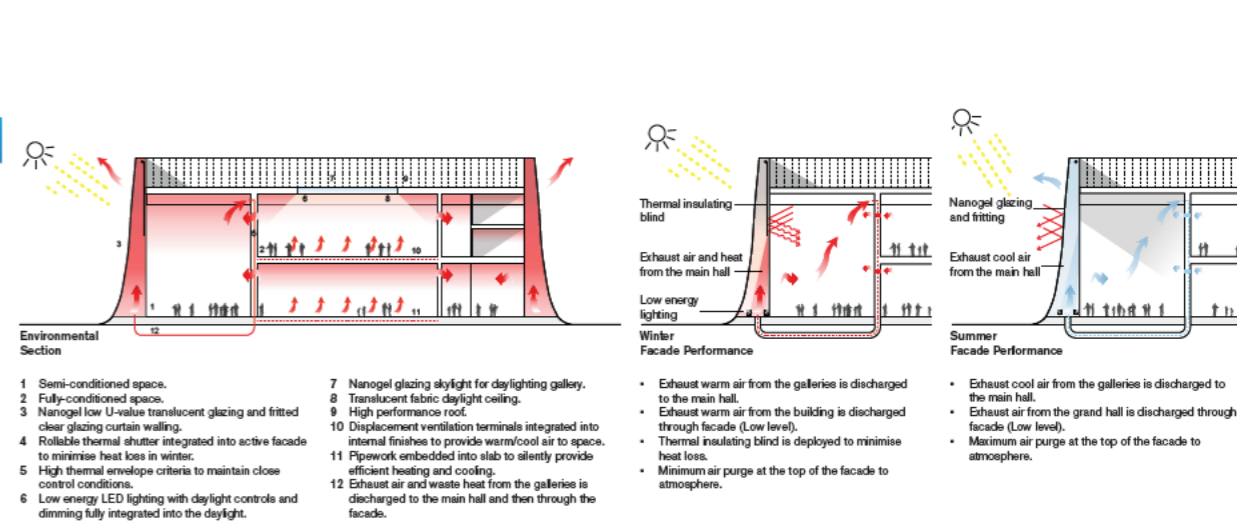
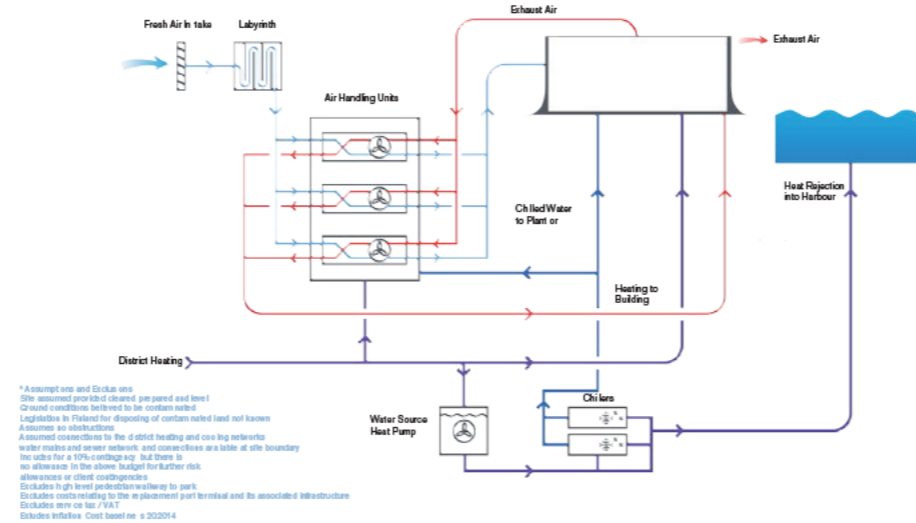
€67m

Average cost

€5,157

€7,866

€5,996





“quiet animal”

The Guggenheim Helsinki is located at the southwestern edge of Helsinki’s South Harbour. Our proposal takes the urban form of a Helsinki city block rotated to the harbour edge to respect both the familiar scale of the historic city grid and the very specific surrounding waterfront condition.

Helsinki city blocks in the 1800s were named after wild animals. Through the use of texture the proposed new block will have the tactile familiarity of a pet’s fur.

Two annexes and landscaping are proposed to mediate the civic periphery and resolve transport and delivery requirements.

The first is the “Art Kiosk”, an exhibition and retail space for young Nordic art with a bar and rooftop restaurant, aligned with the city grid and twinned with the historic market hall. The second is a services pavilion, aligned to the waterfront, enclosing a gravel sculpture garden at the southernmost edge of the site. This pavilion can be increased in size to become an additional ferry terminal. A future third annex in the form of a ship, an “art cruiser” could dock at the ferry terminal and the islands to the south.

The majority of the galleries are contained in six lime-washed timber clad volumes which are stacked over two levels. A seventh volume flanks these, containing administrative programme and primary retail. Public spaces including education and events are formed

between these and a membrane of textured glass which wraps the entirety, like a collection of cells within a living organism. This glass membrane is an intelligent skin which precisely diffuses the Helsinki daylight creating a visually calm interior whilst transmitting to the city an intriguing sense of what is happening inside.

Translucent at ground level, the glass membrane is transparent toward its top, allowing light transmission, and views through of the skyline beyond. The glass has two scales of refractive texture, so is experienced differently from near and far. The proposal is to use industrialised Finnish craft techniques in the glass manufacturing.

Directly accessed via the side and top lit semi-conditioned sculpture hall, the concept for the galleries is a regular arrangement with lines of sight between them and the retail and lecture theatre. They are tall simple spaces with varying possibilities for side and top lighting via the glass membrane and roof lights, or completely artificial lighting. The ground floor galleries can be opened up to form one super-space, which enables a wide range of curatorial approaches.



Two distinct staircases - one wide and convivial like at Senate Square, and the other helical, similar to Aarne Ervi's Porthania, enable visitors to loop between ground and first floor and return to their start without retracing their path. The wider staircase is also used as an projection space for film events.

Aided by the "Art Kiosk" the plaza on the northern side of the museum is intended to be inhabited by outdoor installations and events. The waterfront strip to the east is designated as an area reclaimed for open public usage and as a route to the gravel sculpture garden to the south of the site. Taking the new footpath to the west allows the whole block to be circumnavigated.

Both new and timeless, The Guggenheim Helsinki will be a completely unique and very public building. It will be a new waterfront destination from the Esplanadi and overseas, an elegant and functional addition to the city and the Nordic art, architecture and design scene.